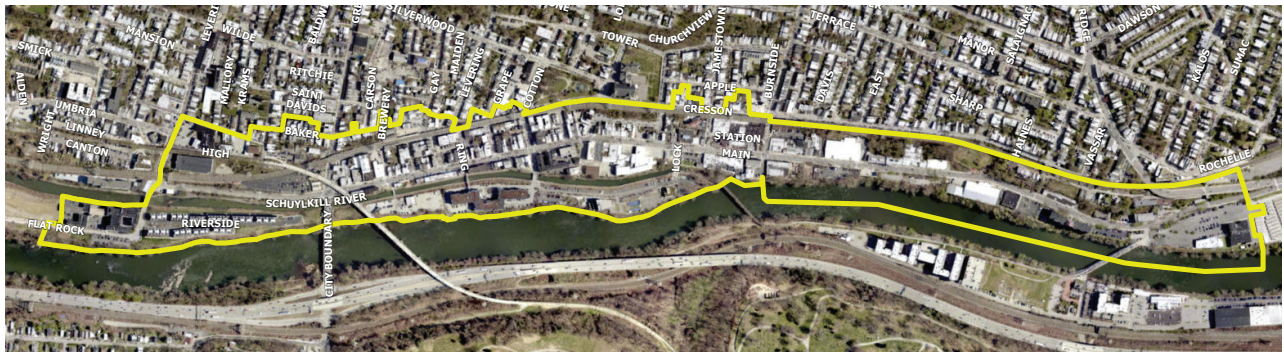


MANAYUNK

NEIGHBORHOOD COMMERCIAL AREA OVERLAY

**WE WANT TO
HEAR FROM YOU!**

The Philadelphia City Planning Commission is working to update the Manayunk Commercial Area Overlay District. Neighborhood Commercial Area Overlay Districts (NCA) are intended to preserve the integrity of neighborhood commercial areas and to promote and help guide appropriate commercial development. The following survey asks questions about the physical development of Main Street. The survey is an opportunity for people who live, work, and visit Manayunk to provide input on the neighborhood. **SURVEY: <https://arcg.is/jP1jH1>**



Overlay Area Map

Public meeting: May 22, 2025 | 6:30 p.m. - 8:30 p.m.
Venice Island Performing Arts Center
7 Lock St. | Philadelphia, PA 19127



**SCAN THE QR CODE TO SHARE YOUR OPINION
ABOUT THE DEVELOPMENT OF MANAYUNK.**



Department of Planning and Development
Philadelphia City Planning Commission
CITY OF PHILADELPHIA