

# Memorandum



**To:** Alex Smith, Director Art Commission  
**From:** Rana Eldidi  
**Date:** March, 25th 2025  
**Re:** Request for Art Commission Review

---

We respectfully request a spot on the April Art Commission agenda for review regarding capital improvements at Granahan Recreation Center. This is a PPR site is located at 6500 Callowhill St. Philadelphia, PA 19151.

The following brief describes the extent of work.

Granahan Recreation Center is currently in the process of designing the expansion, and reconstruction of this important community space, and we believe the work aligns with the city's commitment to enhancing public spaces with artistic and functional designs that benefit all Philadelphia residents. Since 2021, PPR has conducted an extensive community engagement process to ensure that the design reflects the voices of the people who use the center and its surrounding neighborhood. Feedback from residents, participants, and local organizations has been integral to design decisions. The project aims to incorporate their needs, aspirations, and cultural values into the design, from creating accessible and flexible spaces to integrating sustainable and aesthetically thoughtful design elements that foster a sense of ownership and pride in the community.

The Granahan Recreation Center has been a cornerstone of the community for many years, and our project aims to reinvigorate and expand this space to better serve the needs of its users. The scope of the project includes not only the demolition of the outdated structure but also a complete redesign and expansion that incorporates new spaces for recreation, education, and community engagement. This expansion is designed to support a variety of programming, including three vital community organizations: two local football teams and an art therapy class. These organizations rely heavily on the center as a space for practice, connection, and healing.

Following art commission approval, PPR will finalize the design and coordinate the construction of a new recreation center. The project budget is \$3,000,000 including surveying and design services. SITIO is the design consultant and will be presenting on behalf of PPR.

Thank you for your attention; upon your acceptance, our team will submit the presentation materials at least one week prior to the April 9<sup>th</sup> meeting.

cc: Aparna Palantino, Capital Projects Director, CPO  
Francesco Cerrai, Project Director  
Rana Eldidi, Project Coordinator  
Jacob Elisii, Project Coordinator



# GRANAHAN RECREATION CENTER

PHILADELPHIA PARKS & RECREATION | ARTS COMMISSION PRESENTATION | 04.09.2025

**GRANAHAH RECREATION CENTER**

6500 CALLOWHILL STREET  
PHILADELPHIA, PA 19151

**SCOPE OF WORK**

BUILDING:

- DEMOLITION OF EXISTING BUILDING
- NEW BUILDING - PROGRAM INCLUDES THE FOLLOWING
  - MULTIPURPOSE ROOM
  - MEDIA ROOM
  - OFFICE
  - KITCHEN
  - ADA COMPLIANT BATHROOMS

SITE IMPROVEMENTS:

- NEW PLAZA
- NEW CONCRETE SEAT WALLS

**FUNDING SOURCES**

COUNCIL DISTRICT 4  
2023 LSA GRANT

CONSTRUCTION BUDGET:

**\$3,000,000**

April 1, 2025

Katherine Liss  
The Philadelphia Art Commission  
One Parkway, 1515 Arch Street, 13th Floor  
Philadelphia, PA 19102



Re: Letter of Intent for Percent for Art at Granaham Recreation Center

Dear Katherine:

Creative Philadelphia would like to inform the Philadelphia Art Commission of our intent to administer Percent for Art funds at Granaham Recreation Center, located at 6500 Callowhill Street. Granaham Recreation Center will be undergoing a renovation and expansion, which has triggered the Percent for Art requirement. The capital project consists of a newly constructed recreation building with multi-purpose room, media room, support spaces and exterior site upgrades. The timeline and scope for the administration of art funds is still being determined in collaboration with Capital Program Office (CPO) and Philadelphia Parks and Recreation (PPR)

The Percent for Art funds will provide a beautiful and enduring work of public art that is permanent, site-specific, and reflects the culture, values and diversity of the community. The Art budget will be at least 1% of the total project budget in keeping with the City's Percent for Art guidelines. A project specific Percent for Art Committee will be formed to advise the selection of the artist and the artwork, and will include community voices, and representatives from the Capital Program Office, Parks and Recreation, elected officials, design team, artists, and Creative Philadelphia. The winning artist will be selected through an open Call for Artists process which will involve opportunities for feedback and input from members of the public.

Creative Philadelphia will provide oversight for the Percent for Art process from concept to installation and will work with the Artist and project team to ensure the technical details for the artwork are coordinated with the site. Once the winning artist is selected and the artwork has been developed, Creative Philadelphia will initiate a separate review process with the Philadelphia Art Commission for approving the artwork.

We look forward to working with Capital Programs Office, PPR and all stakeholders to realize beautiful, site-specific public artwork that will be a long-lasting contribution to Granaham Rec and the surrounding community, while enhancing the City's renowned collection of public art. Should you require any additional information please do not hesitate to call me at 215.686.4596.

Sincerely,

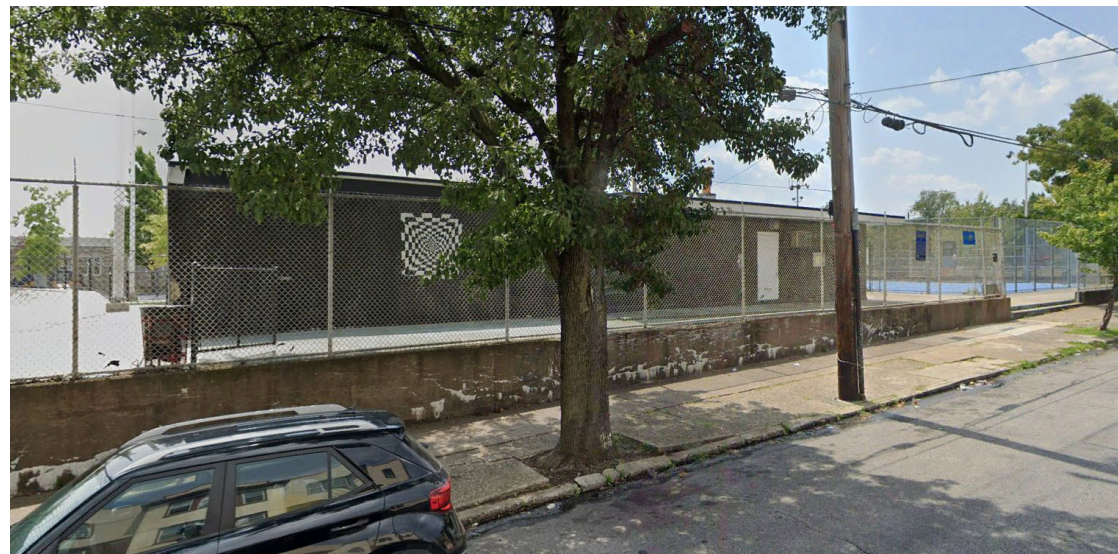
Marguerite Anglin, RA, NOMA  
Public Art Director  
Creative Philadelphia  
City of Philadelphia

116 City Hall • Philadelphia, PA 19107 • [www.creativephl.org](http://www.creativephl.org) • 215.686.4596

EXISTING BUILDING



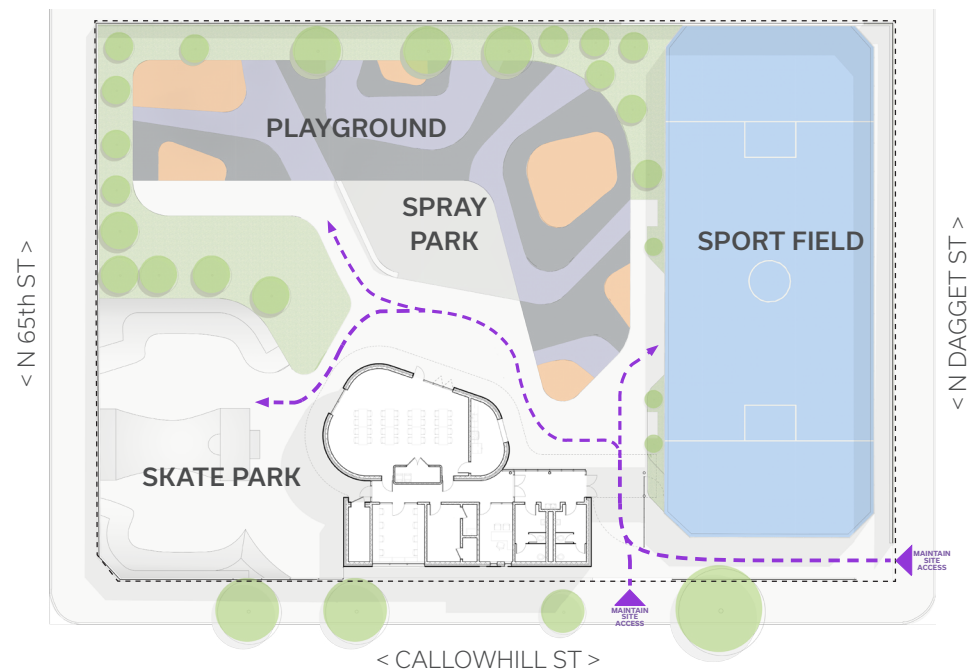
EXISTING BUILDING



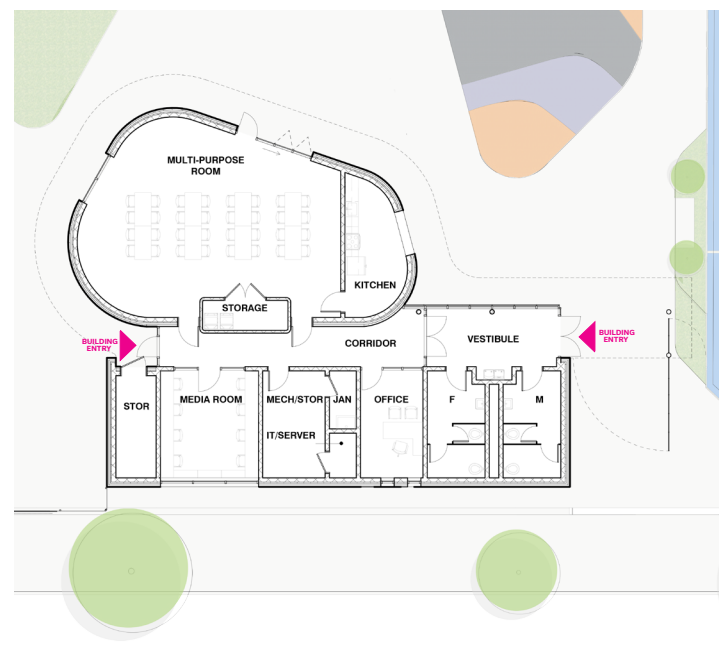
EXISTING BUILDING



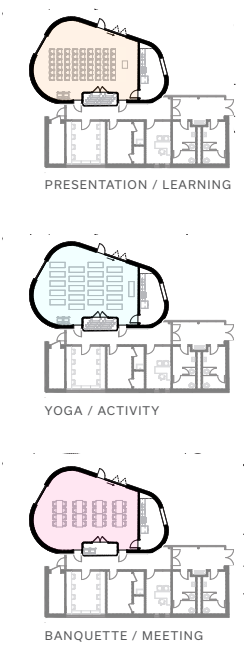
2024 GRANAHAN UPDATE



SITE PLAN



FLOOR PLAN



MULTI-PURPOSE ROOM USES

AXON & PERSPECTIVES



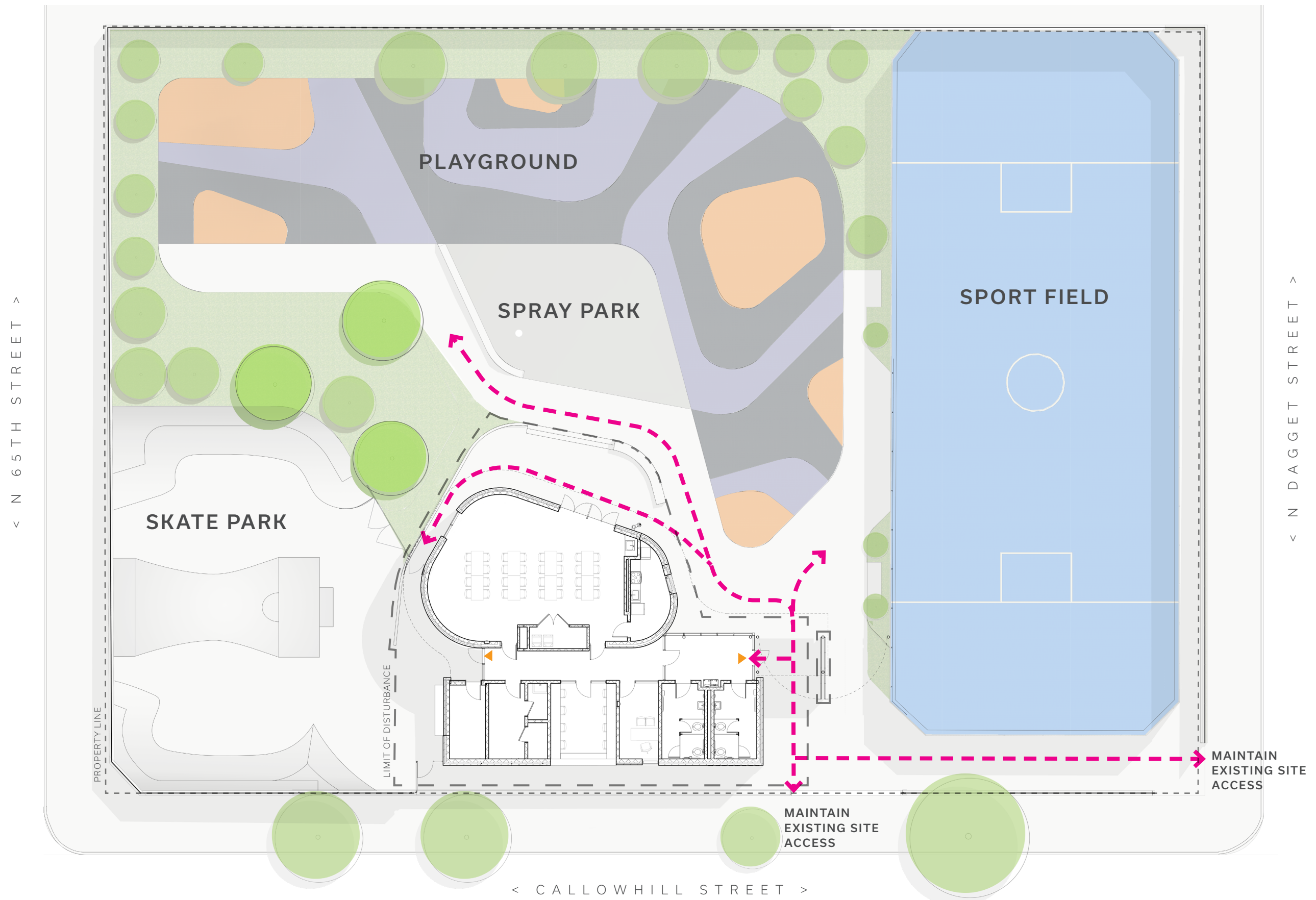
SITE AXON

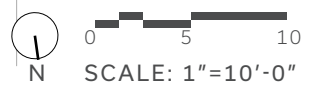
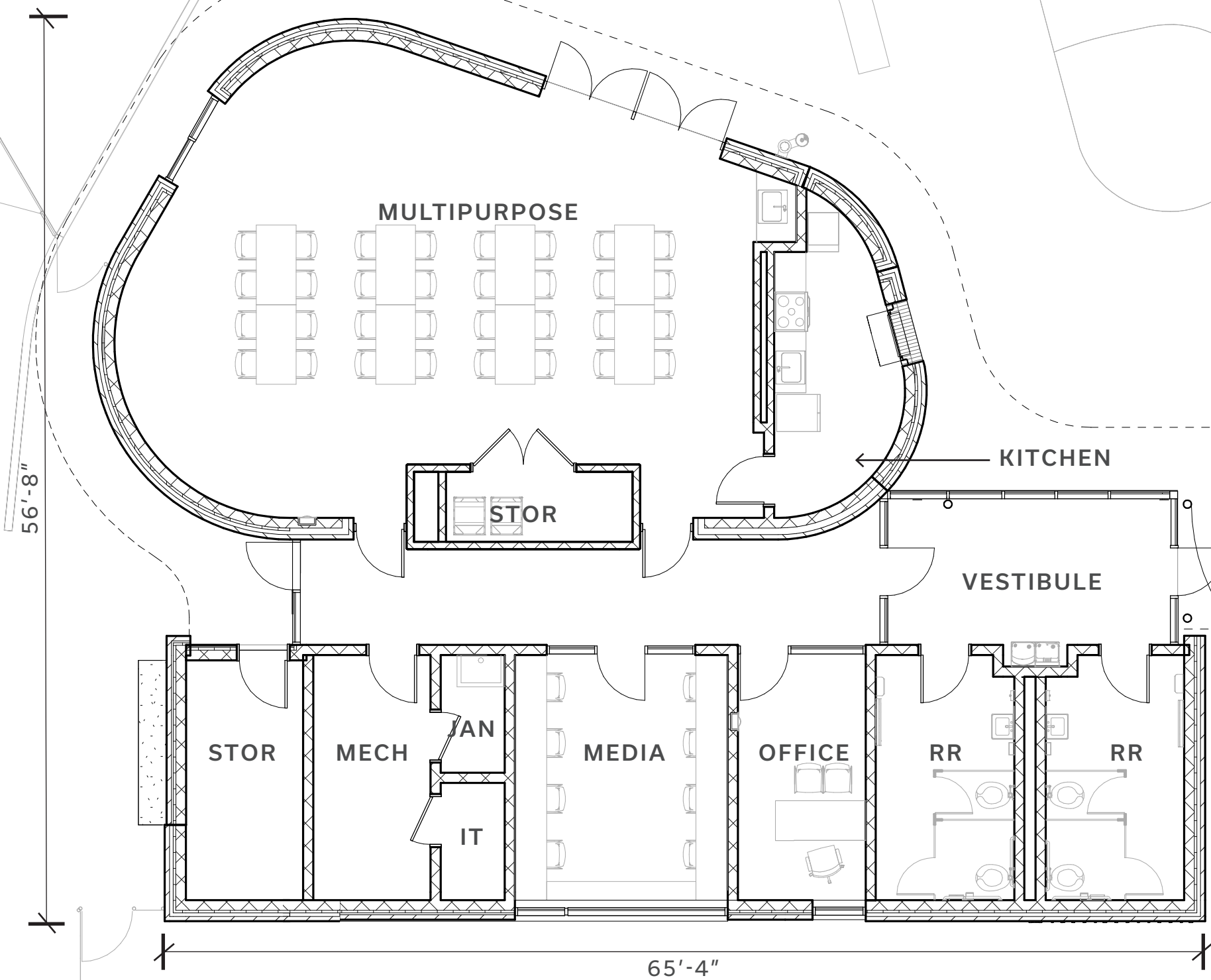


PLAYGROUND



ENTRANCE

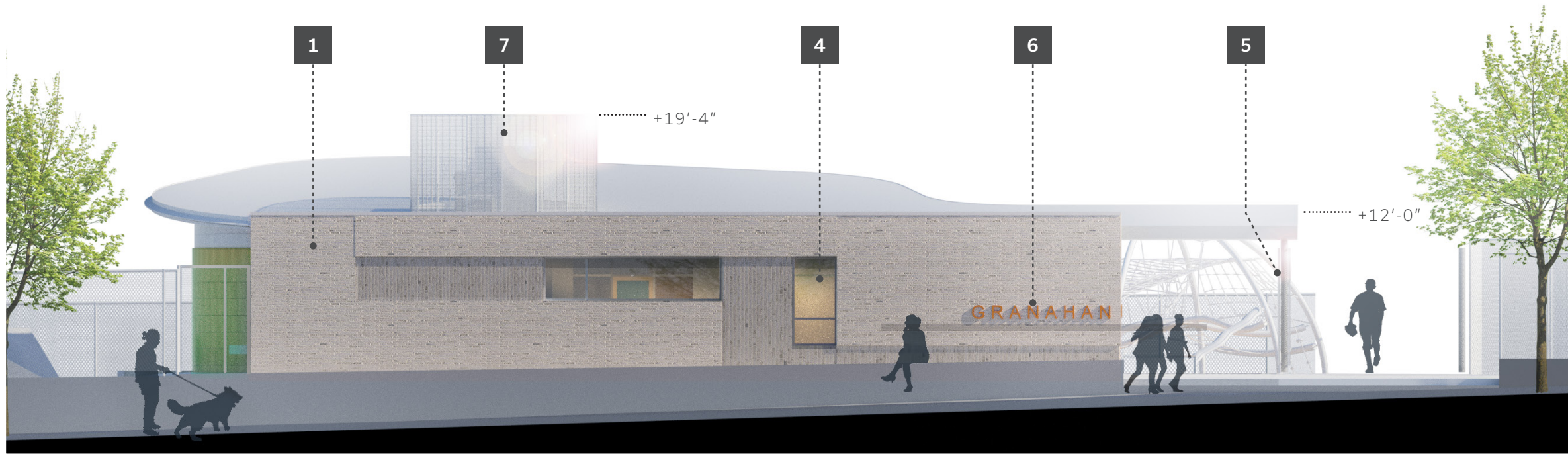




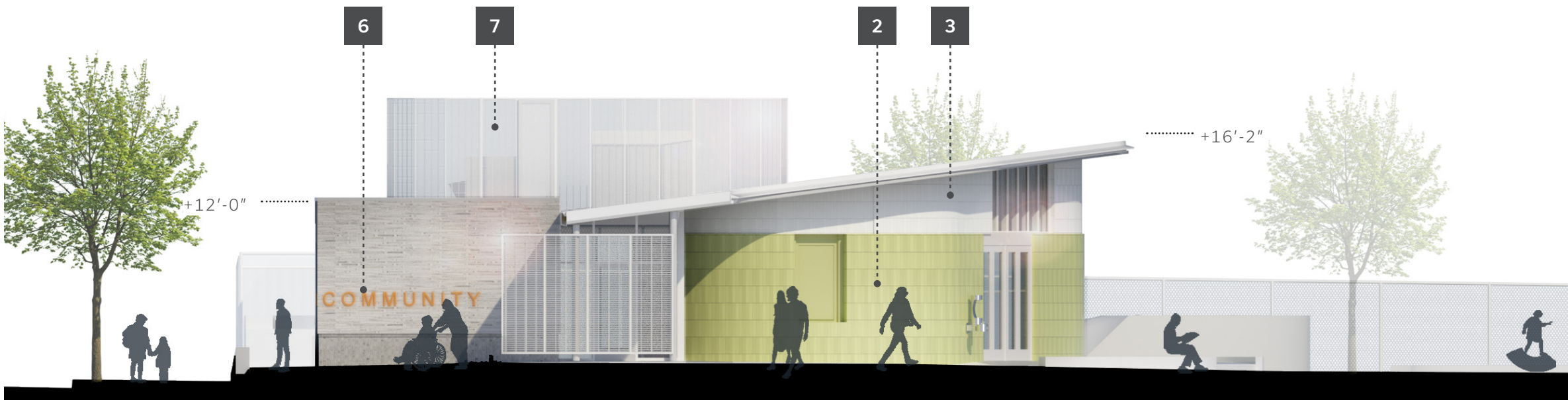


## ELEVATIONS

- 1 BRICK A
- 2 BRICK B
- 3 BRICK C
- 4 GLAZING
- 5 GATE
- 6 SIGNAGE
- 7 RTU SCREEN
- 8 SOFFIT



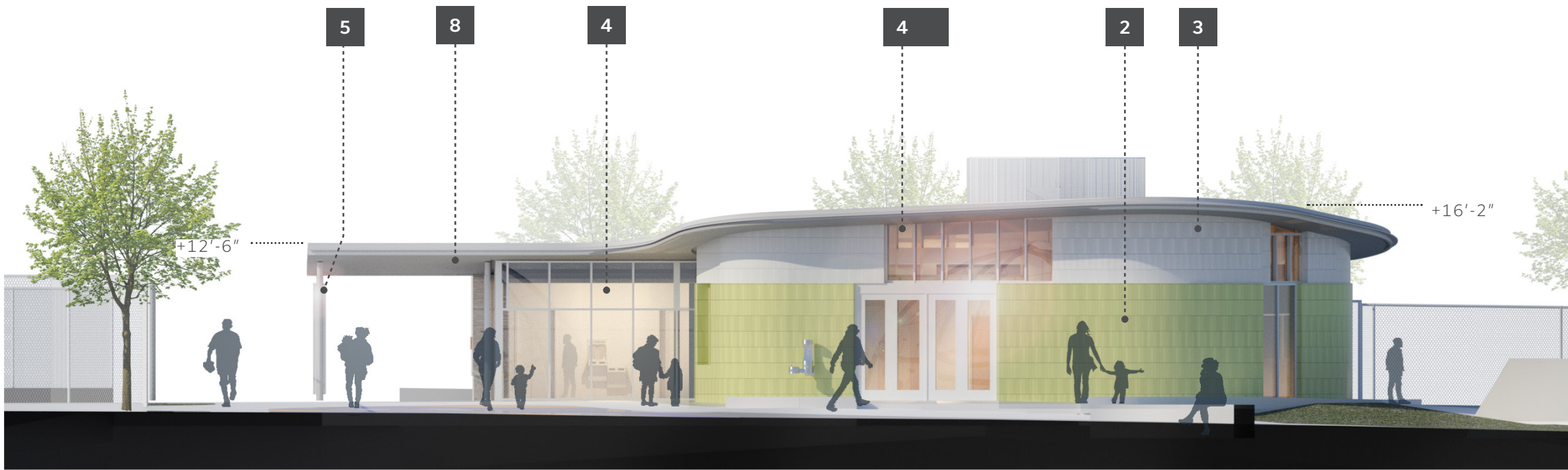
NORTH ELEVATION



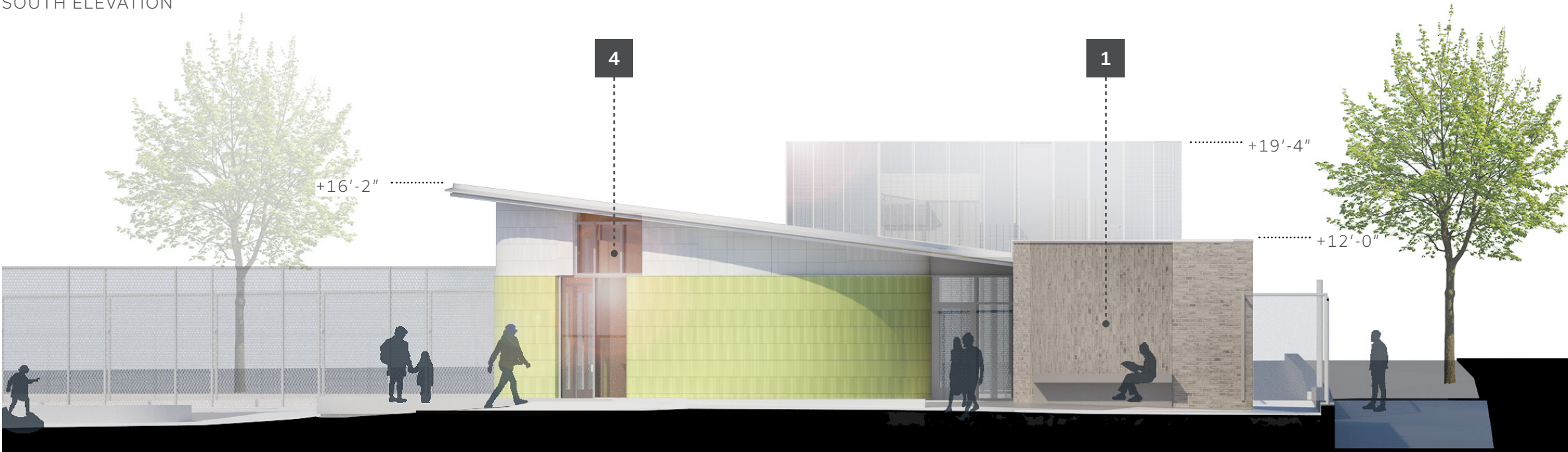
WEST ELEVATION

# ELEVATIONS

- 1 BRICK A
- 2 BRICK B
- 3 BRICK C
- 4 GLAZING
- 5 GATE
- 6 SIGNAGE
- 7 RTU SCREEN
- 8 SOFFIT



SOUTH ELEVATION



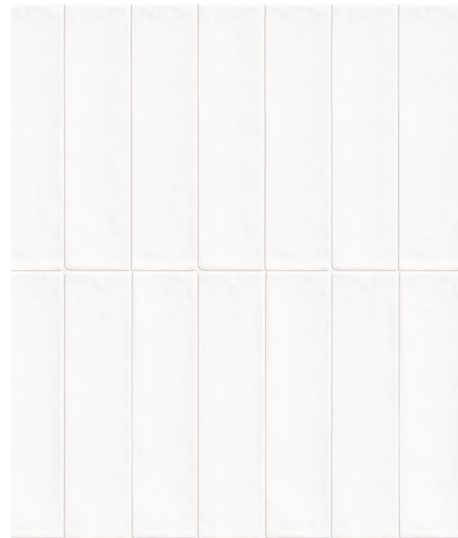
EAST ELEVATION

# MATERIALS

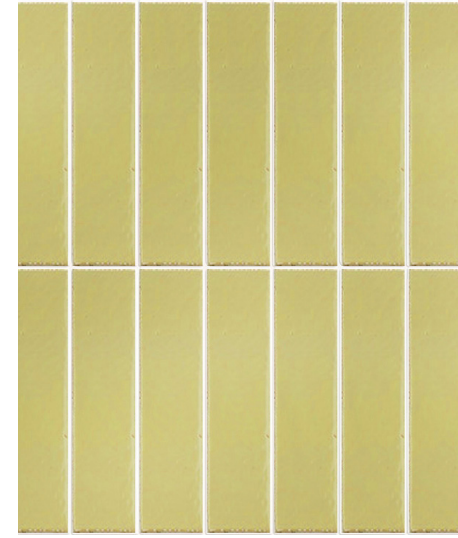
- 1 BRICK A
- 2 BRICK B
- 3 BRICK C
- 4 GLAZING
- 5 GATE
- 6 SIGNAGE
- 7 RTU SCREEN
- 8 SOFFIT



**1 / BRICK - A**  
TAYLOR EXECUTIVE/ARTIC GREY BLADECUT BRICK



**2 / BRICK - B**  
GLEN GERY WHITE BRICK



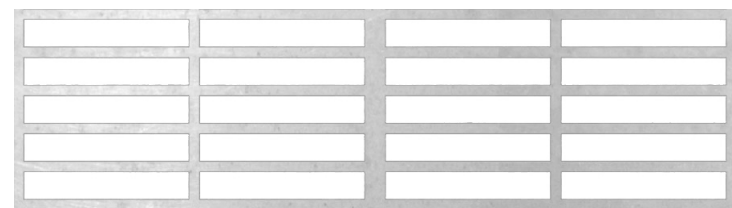
**3 / BRICK - C**  
BELDEN SEA GLASS GLAZED BRICK



**OVERALL MULLION COLOR**  
CLEAR ANODIZED ALUMINUM



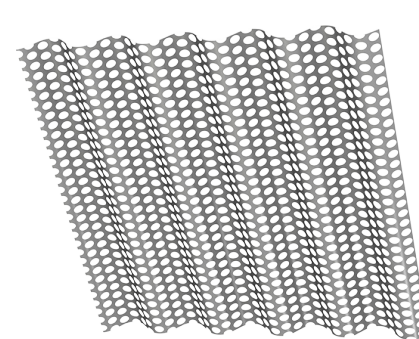
**4 / GLAZING**  
CLEAR GLASS



**5 / GATE**  
SLOTTED PERFORATED ALUMINUM



**6 / SIGNAGE**  
STAINLESS STEEL DIRECT MOUNTED LETTERS



**7 / RTU SCREEN**  
PERFORATED CORRUGATED ALUMINUM



**8 / SOFFIT**  
WOOD TONE METAL PANEL



NORTH ELEVATION



SOUTH VIEW PERSPECTIVE



