

Photographs of the Maple Grove School, 10151  
Academy Road, 1936 and 1939, provided by  
Peter A. Lamlein, the property owner.



Figure 1. Front (north) and side (east) facades of the Maple Grove School, 10151 Academy Road, 1936, prior to conversion from schoolhouse to dwelling.

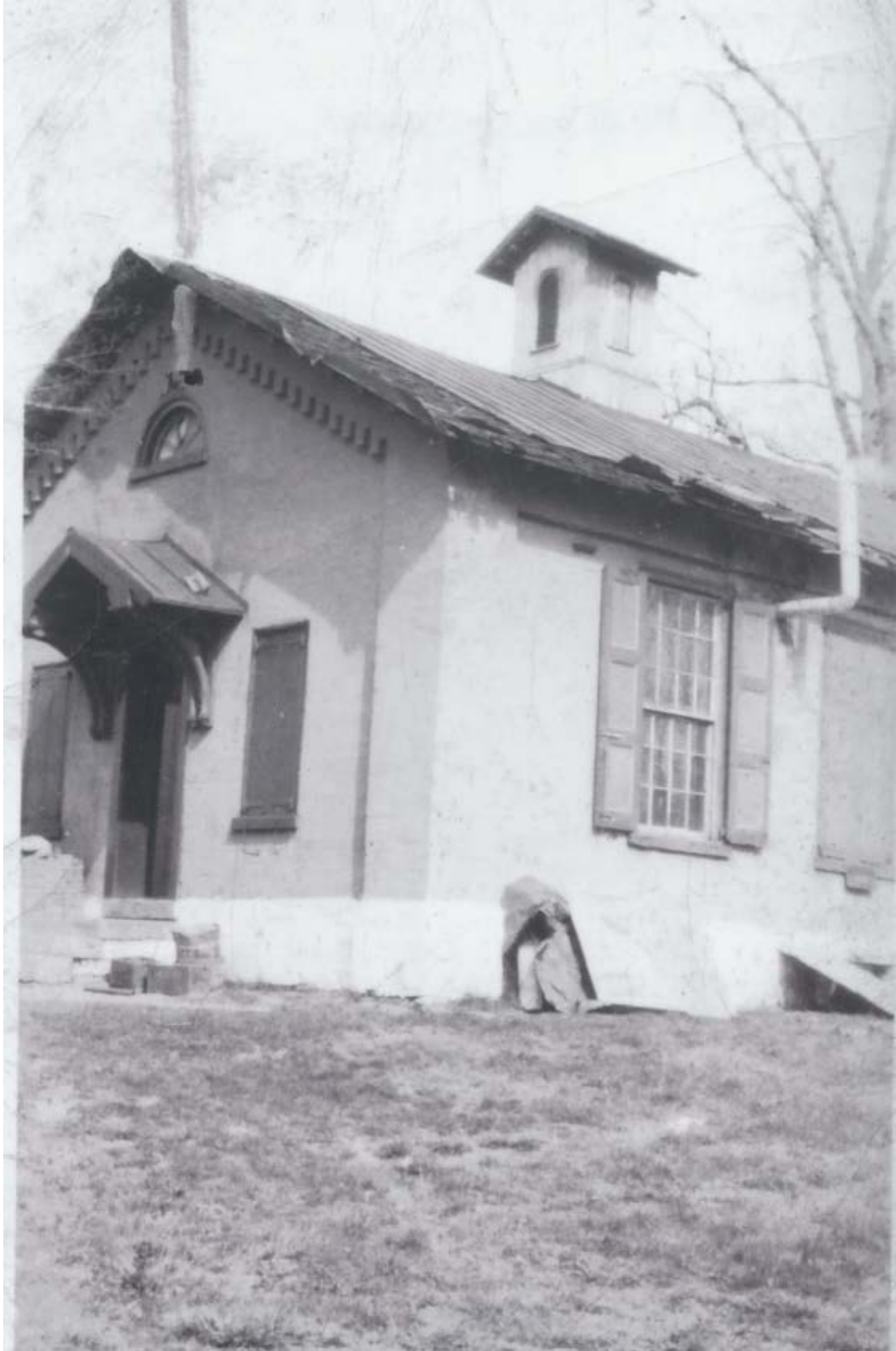


Figure 2. Front (north) and side (west) facades of the Maple Grove School, 10151 Academy Road, 1936, prior to conversion from schoolhouse to dwelling.



Figure 3. Rear (south) and side (west) facades of the Maple Grove School, 10151 Academy Road, 1936, prior to conversion from schoolhouse to dwelling.



Figure 4. Side (west) facade of the Maple Grove School, 10151 Academy Road, 1936, prior to conversion from schoolhouse to dwelling.





Figure 5. Side (west) facade of the Maple Grove School, 10151 Academy Road, 1939, after conversion from schoolhouse to dwelling. The canopy over the doorway and the lunette window were moved from the front façade to this façade. The first-floor windows were shortened and the dormers were added.



Figure 6. Side (east) facade of the Maple Grove School, 10151 Academy Road, 1939, after conversion from schoolhouse to dwelling. The first-floor windows were shortened and the dormers were added. The school outhouse can be seen to the left by the tree.