

Project No. 56182

**H&R Block Signage Package**

1201 Chestnut Street  
Philadelphia, PA 19107



**H&R BLOCK**



## LEGEND

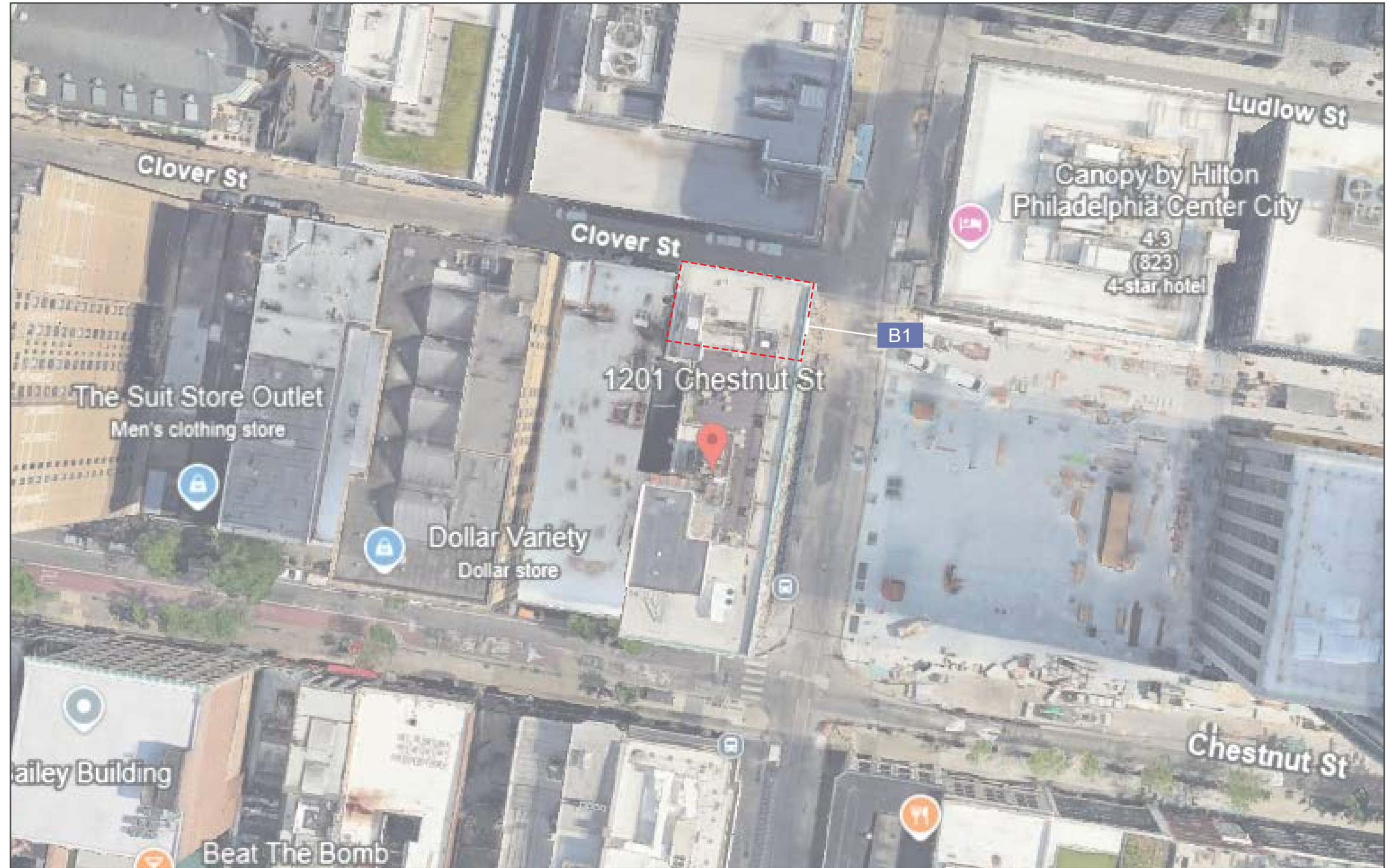
**B1** Blade Sign

## SIGNAGE CRITERIA

**Code:**  
2 sq. ft. per lin. ft. of ground floor frontage; 100 sq. ft. per sign.  
Max height: the lower of the roof line or second floor window sill  
Projecting signs shall not extend more than 24" over any public right-of-way  
No more than two ft. when the lowest part of the sign which extends over the right-of-way is between eight ft. and 10 ft. above the right-of-way

**Landlord restrictions:**  
N/A

**B1** 48' x 2 sqft = 96 SF Allowed



2000 Center Drive  
Suite C411  
Hoffman Estates, IL 60192  
Office 847.301.0510  
identiti.net

W.O. No. 56182  
Address 1201 Chestnut Street  
City, ST Philadelphia, PA 19107

Orig. Draft 01.15.2025  
Project Mgr. N/A  
Designer IDV

Rev. Art N/A  
Rev. Date 00.00.0000  
Page Rev. 000

Customer

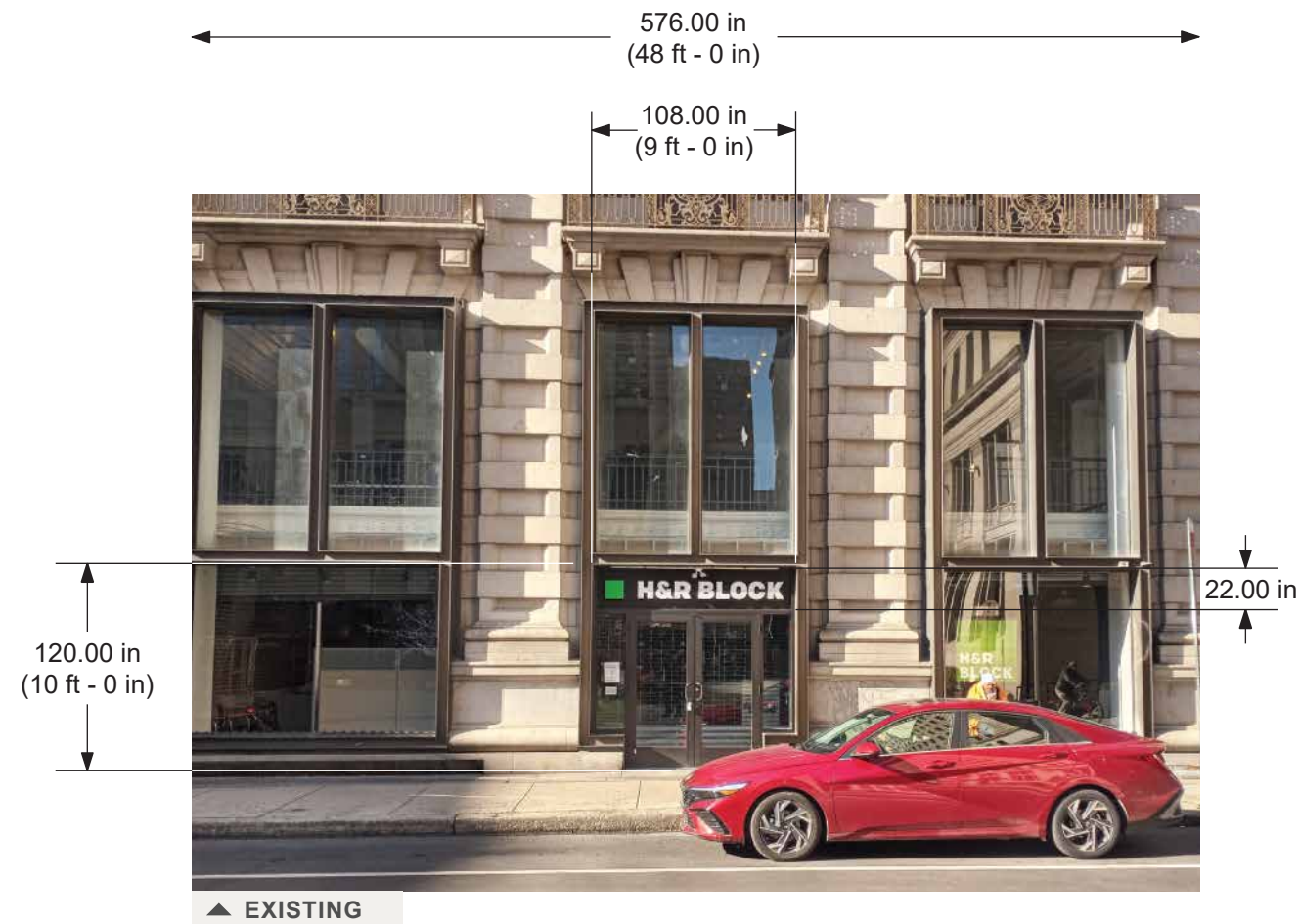


**H&R BLOCK**

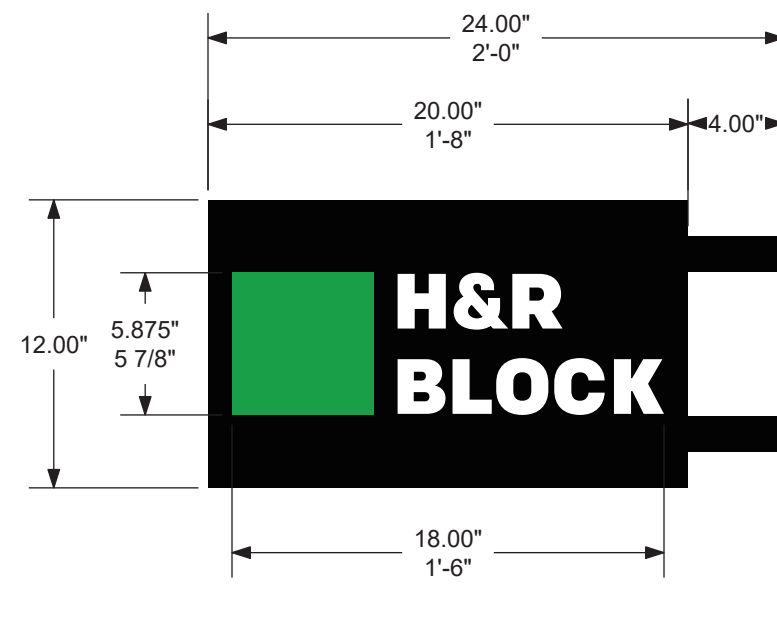
North



Plan View:  
**Site Plan**  
Exterior



Electrical to be run through mounting arm and connected to existing power



SCALE: 1" = 12"



2000 Center Drive  
Suite C411  
Hoffman Estates, IL 60192  
Office 847.301.0510  
identiti.net

W.O. No. 56182  
Address 1201 Chestnut Street  
City, ST Philadelphia, PA 19107

Orig. Draft 01.15.2025  
Project Mgr. N/A  
Designer IDV

Rev. Art EG  
Rev. Date 02.18.2025  
Page Rev. 002

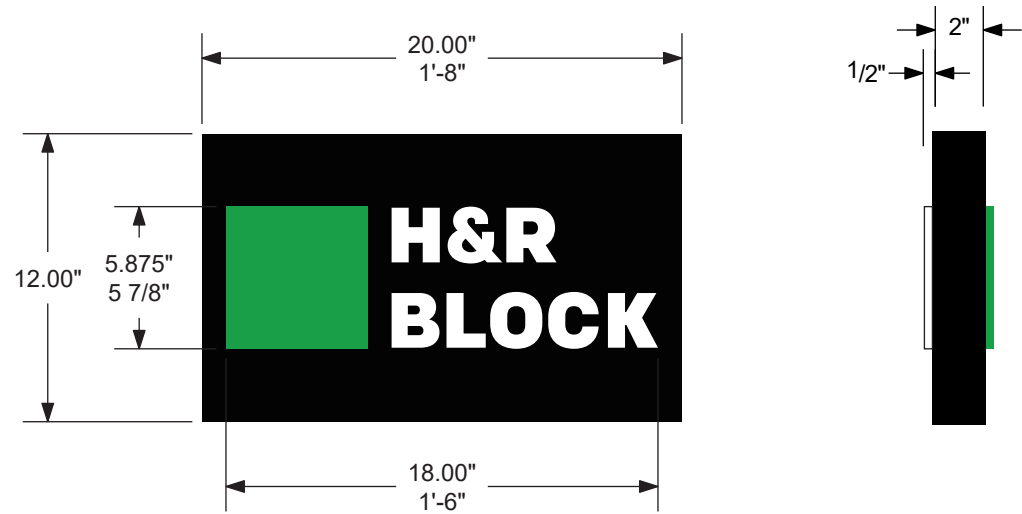
Color Palette

- Face: Aluminum Panel
- Face: Painted Black
- Logo Vinyl: Arlon 2500 - Green 2586

- Letters: Aluminum Painted White

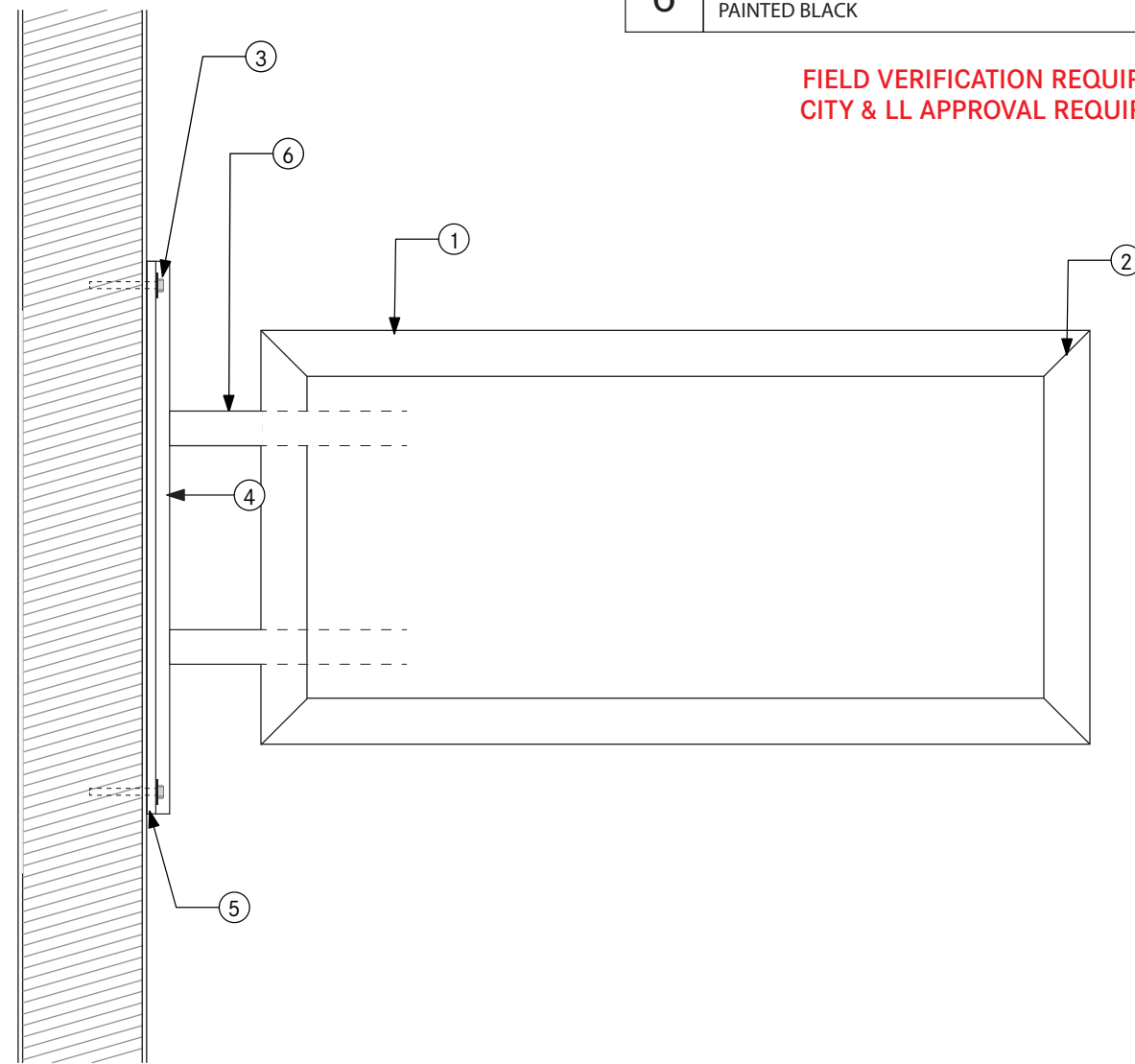
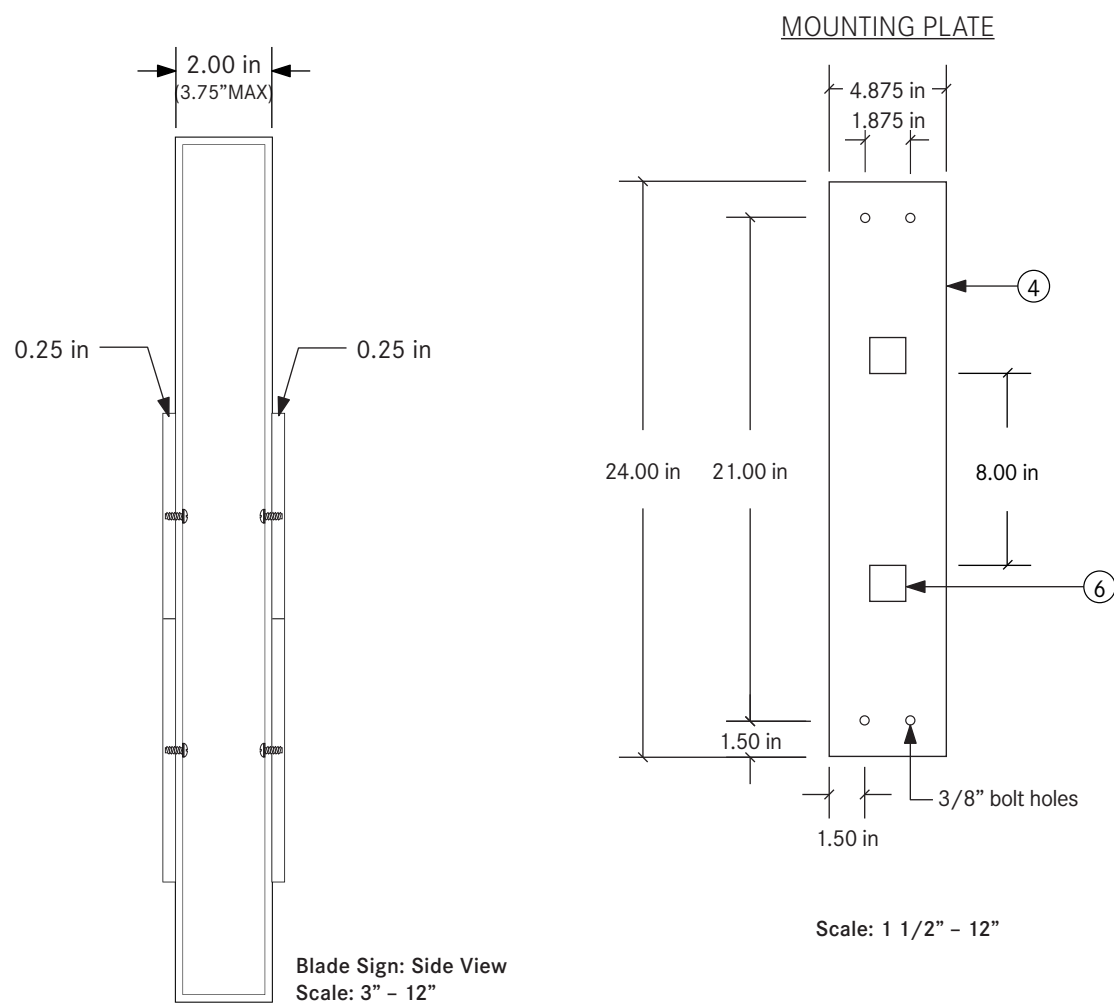
Sign Type:  
D/S Non-Illuminated  
Blade sign Applied Vinyl  
Mounting on Arm Structure

Signage:  
B1  
Blade Sign



NON-ILLUMINATED BLADE	
1	.090 ROUTED ALUMINUM PANELS PAINTED (TBV) W/ 1/4" FCO ALUMINUM LETTERS AND APPLIED VINYL
2	1.5"X1.5" TUBULAR INTERNAL FRAME: WELDED IN ALL 4 CORNERS
3	MOUNTING HARDWARE: VARIES ON FACADE TYPE AND SUPPORT STRUCTURE
4	3/8" THICK ALUMINUM MOUNTING PLATE PAINTED BLACK
5	1" DEEP ALUMINUM PLATE COVER PAINTED BLACK
6	1.5" SQUARE ALUMINUM TUBE (QTY 2) PAINTED BLACK

**FIELD VERIFICATION REQUIRED  
CITY & LL APPROVAL REQUIRED**



SCALE: NTS



2000 Center Drive  
Suite C411  
Hoffman Estates, IL 60192  
Office 847.301.0510  
identiti.net

W.O. No. 56182  
Address 1201 Chestnut Street  
City, ST Philadelphia, PA 19107

Orig. Draft 01.15.2025  
Project Mgr. N/A  
Designer IDV

Rev. Art EG  
Rev. Date 02.22.2025  
Page Rev. 001

Color Palette

- Face: Aluminum Panel
- Face: Painted Black
- Logo Vinyl: Arlon 2500 - Green 2586

□ Letters: Aluminum Painted White

Sign Type:  
D/S Non-Illuminated  
Blade sign Applied Vinyl  
Mounting on Arm Structure

Signage:  
**B1**  
Sign Specifications