

SIGNAGE KEY

- B1 (Dunkin) Channel Letters
- B2 Blade Sign

PREPARED BY / SIGN CONTRACTOR: **Signarama**
 The way to grow your business.
 Production Documents
 101 E Luere St Philadelphia, PA 19124
 215-333-3337 | F: 215-333-7442
 www.signaramaphilly.com | design@signaramaphilly.com

PREPARED FOR:
Dunkin
 1001 Chestnut Street,
 Philadelphia, PA 19107





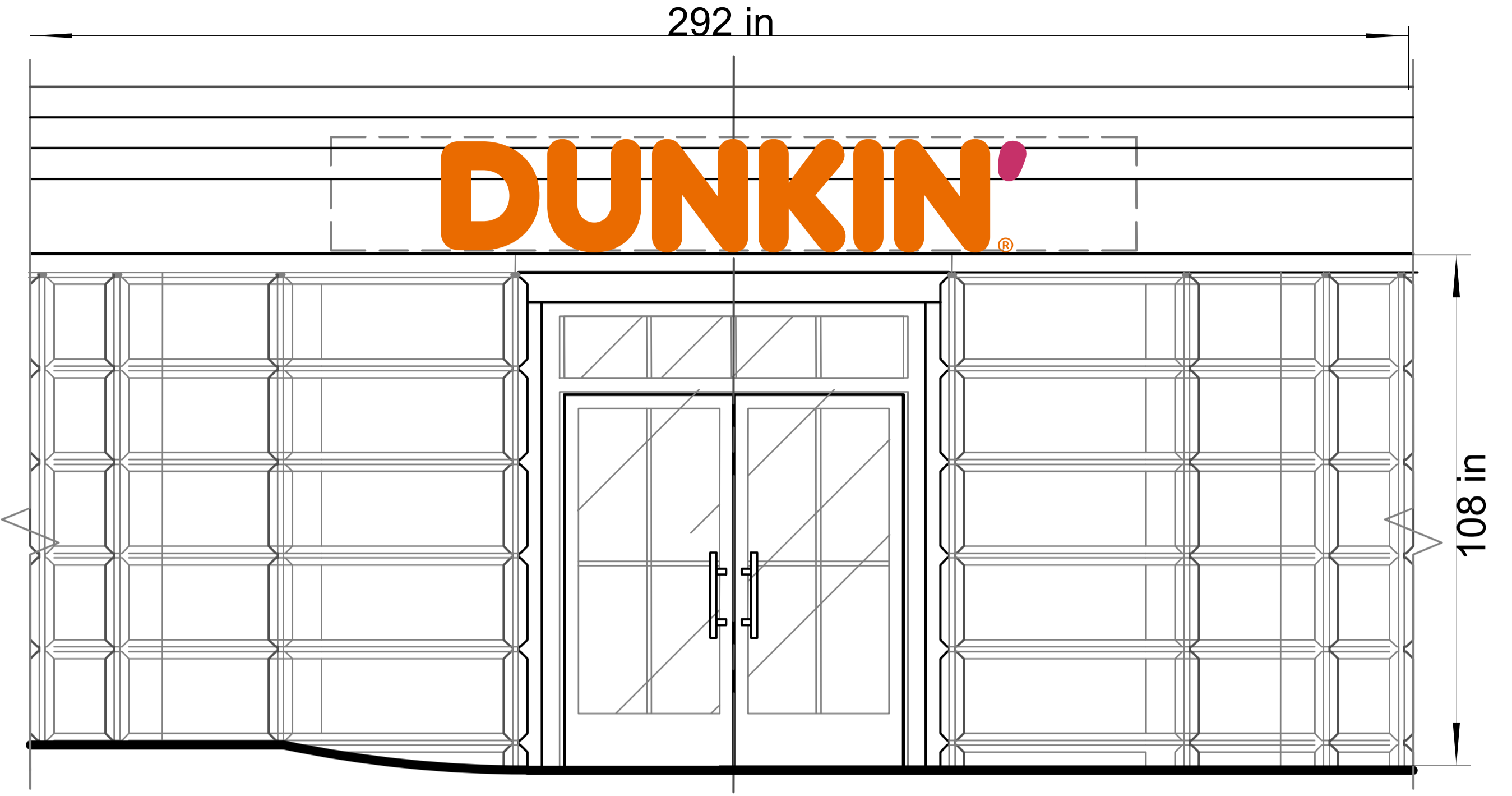
PREVIOUS TENANT 42 SQ FT



CHANNEL LETTERS TO BE MOUNTED ON EXISTING SIGN FACADE
EXISTING SIGN FACADE

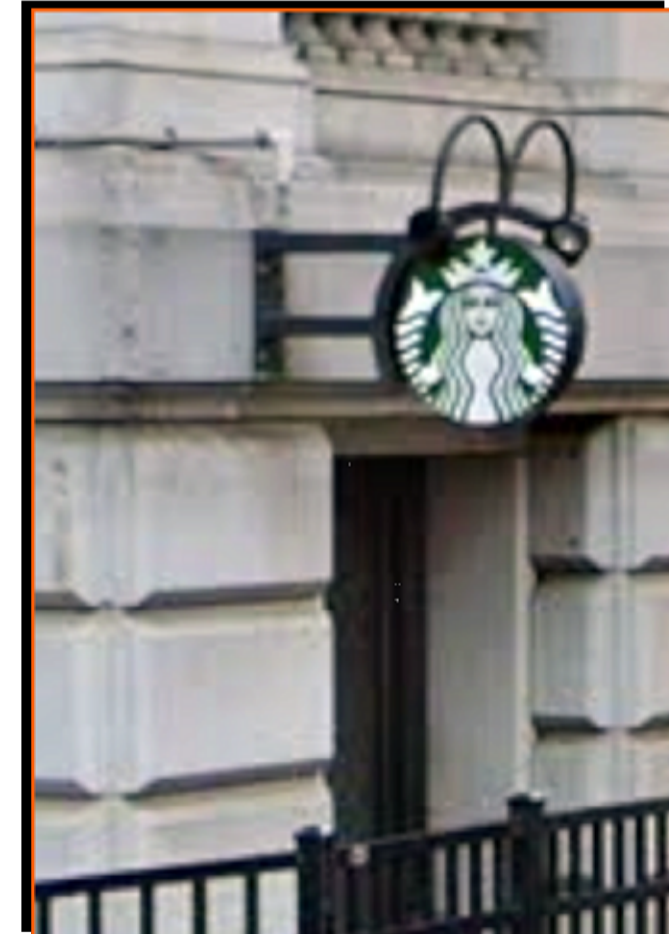
- 1) Trim Cap - 313 Bronze w/ matching sheet metal screws
 - 2) Case - To be 7540C Dark Gray w/ 1/4" weepholes
 - 3) 3/16" Acrylic Face w/ Translucent vinyl application
 - 5) LEDs - White w/ ClassII low voltage wiring
 - 6) Mounting Hardware (3/8" x 3" Galv. Lag Bolts)
 - 7) Cut off Switch and Transformer, Connect to existing power.
 - 8) Wall Surface - (Existing Alum Panel Sign Facade)
-
- (SIGNS TO BE UL LISTED & MANUFACTURED ACCORDING TO NATIONAL ELECTRICAL CODES)

DESIGN CRITERIA	PA
CODE: IBC 2021 ASCE 7-16	
Ground Snow Load - $P_g = 38$ psi	
Snow Exposure Factor $C_e = 0.9$ for fully exposed (1.0 for Partially exposed) Snow Load Importance factor $I = 1.0$	
Thermal factor $C_t = 1.2$ (for Unheated structure)	
Wind Loads:	
Basic Wind Speed $V = 125$ mph	
Wind Importance Factor $I = 1.0$	
Wind Exposure Category = C (for open terrain), Use B inside the city.	
Force Coef $C_f = 1.0$ to 1.95 depends on the shape and dimension of the sign. Gust Factor $G = 0.85$	



Front Elevation

3" DP Channel Letters mounted to Sign Facade, (Two New Illuminated Blade Signs)



PREVIOUS TENANT

Mounting Hardware
3/8" x 3" Masonry Screws

