

EZ SIGNS, LLC  
1839 Bustleton Pike  
Feasterville, PA 19053  
P: 1 (866) 349-5444  
F: (215) 676-3269

**EZ SIGNS LLC**  
**1 (866) FIX-LIGHT**

March 19, 2025

---

Re: Sign Install for SANDBOX  
1712 Walnut ST

Scope of work:

SIGN B - Proposed one (1) statically LED-lit accessory sign 3.97 SQ FT

SIGN D - Proposed second surface door vinyl, Qty of two (2), 0.17 SQ FT each

All existing signage to be removed.

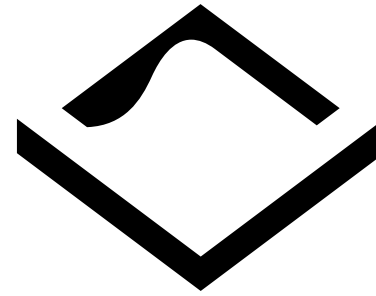
---

Natalya Atroshyna  
EZ SIGNS LLC  
1839 Bustleton Pike  
Feasterville, PA 19053  
p. 267- 406 - 0273  
e. [permits@signsinstall.com](mailto:permits@signsinstall.com)

# PROJECT SCHEDULE

SIGN TYPE/ DESCRIPTION:	QTY.:
B. ILLUM. TRIMLESS FACE-LIT. CHANNEL LTRS/LOGO "SANDBOX VR" with logo mounted to suspended raceway at entrance.	ONE (1)
D DIGITALLY PRINTED QR CODE VINYL DECALS mounted to entrance doors	TWO (2)

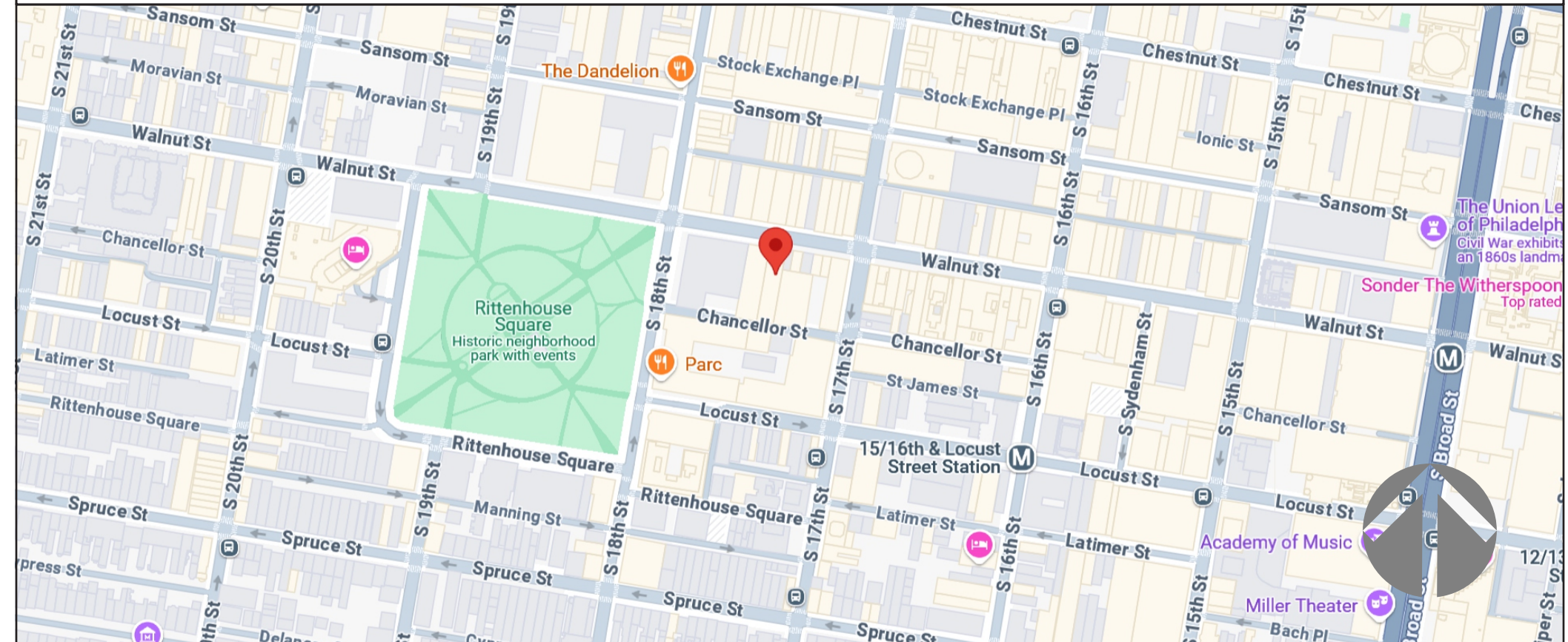
PROJECT:



**SANDBOX<sup>VR</sup>**

Sandbox VR  
Philadelphia - Walnut  
1712 Walnut St  
Philadelphia, PA 19103

## MAP



CLIENT & LOCATION



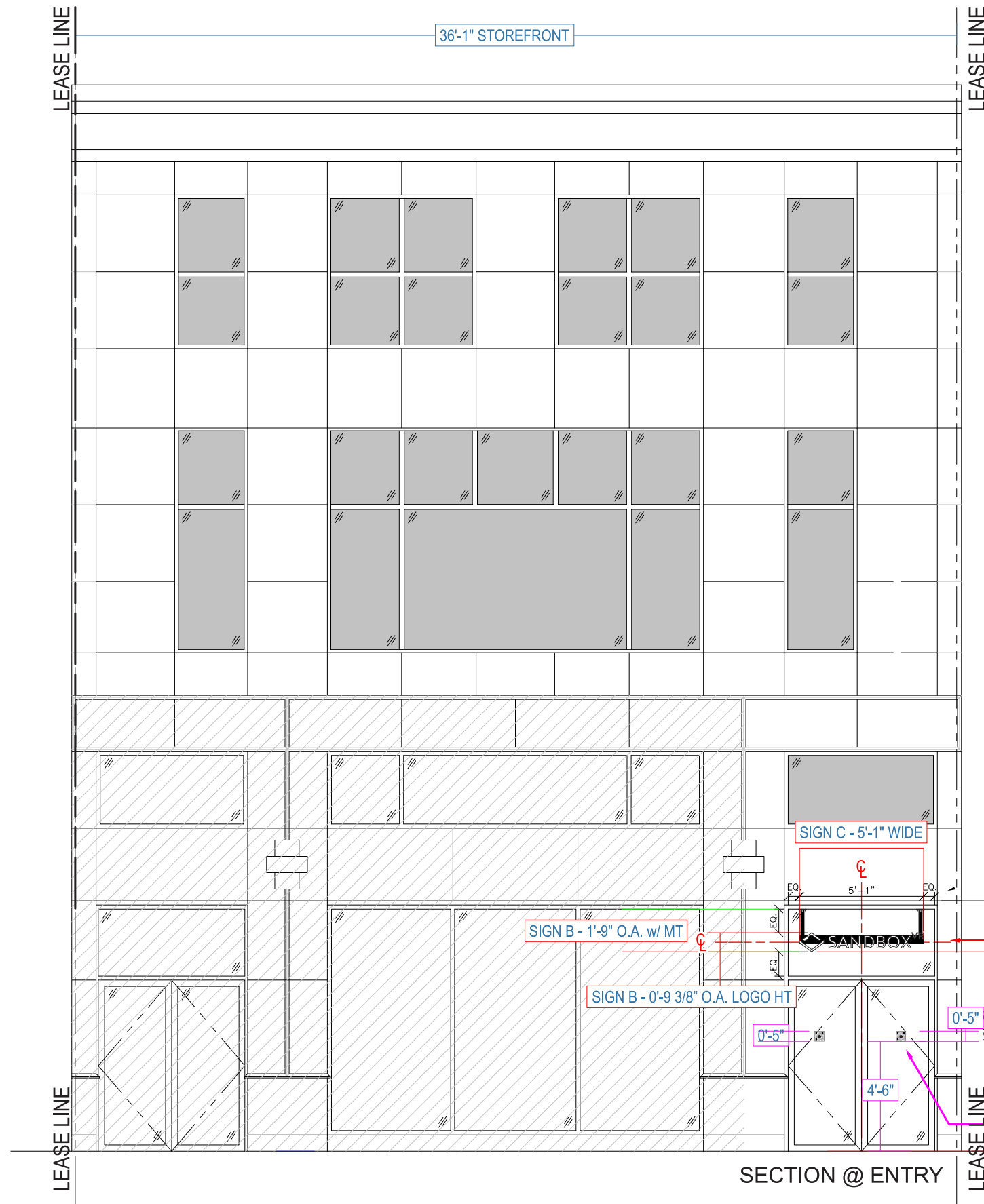
Sandbox VR /// Philadelphia - Walnut  
1712 Walnut St  
Philadelphia, PA 19103



EXISTING STOREFRONT



PROPOSED STOREFRONT



℞

**SIGN B = AREA**  
0'-9 3/8" x 5'-1" = 3.97 SQ.FT.

SIGN B  
SUSPENDED  
TRIMLESS C.L.

SIGN B

**SIGN D = AREA**  
0'-5" x 0'-5" = 0.17 SQ.FT.

SIGN D  
DIGITALLY PRINTED  
QR CODES 5"X5"

SIGN B MOUNTS TO CEILING.  
FACE OF SIGN TO BE  
PLUMB WITH OPENING - VIF

BUILDING PROFILE - MOCKUP



SECTION @ ENTRY

1.0' - 3"  
T.O. EXISTING STOREFRONT

SIGN C - 5'-1" WIDE

SIGN B - 1'-9" O.A. w/ MT

SIGN B - 0'-9 3/8" O.A. LOGO HT

SIGN B - 8'-2" AFG

5'-1"

SANDBOX

0'-5"

0'-5"

4'-6"

0'-4" MT PLATE

SIGN B - 1'-9" O.A. w/ MT

0'-9 3/8"

0'-7"

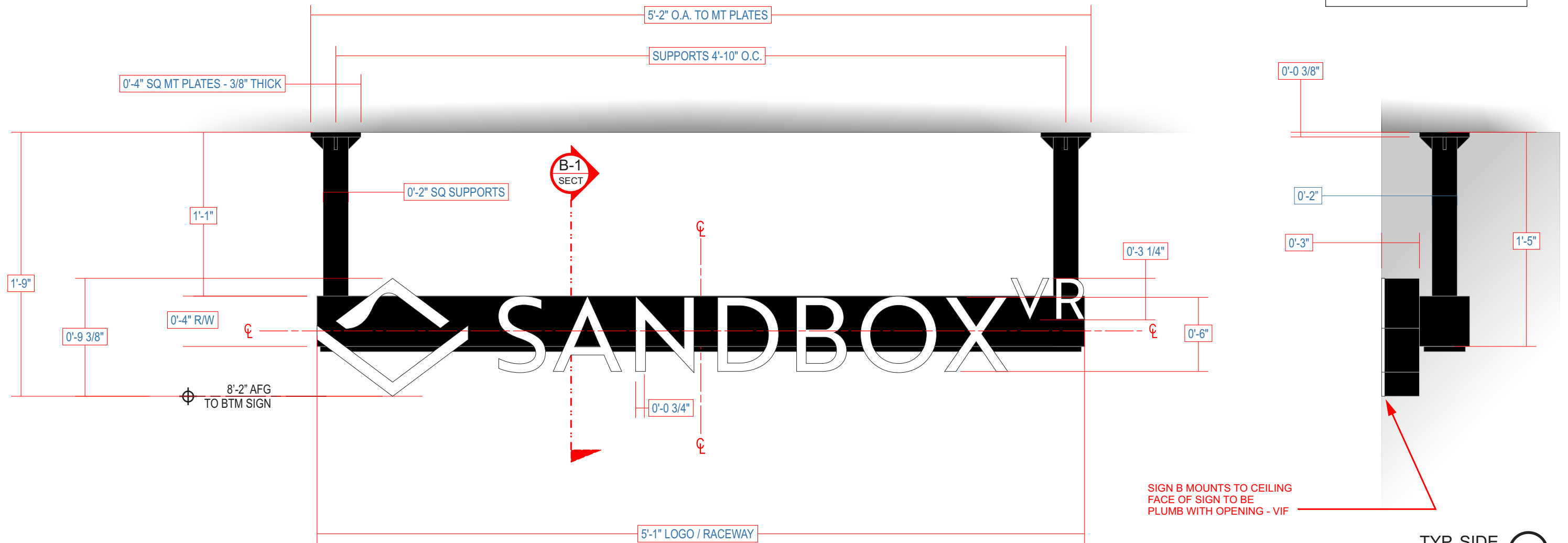
# SIGN B - TRIMLESS FACE-LIT. CHANNEL LETTER SET with LOGO/ SUSPENDED on RACEWAY - LAYOUT

**B**

SCALE: 1-1/2" = 1'

QTY.: ONE (1)

**SIGN B = AREA**  
 0'-9 3/8" x 5'-1" = 3.97 SQ.FT.



SIGN B MOUNTS TO CEILING  
 FACE OF SIGN TO BE  
 PLUMB WITH OPENING - VIF

TYP. SIDE

TYP. FRONT

Proposed one (1) statically LED-lit accessory sign 3.97 SQ FT

TYP. TRIMLESS FACE-LIT ILLUM. LETTER ON SUSPENDED RACEWAY SECTION DETAIL  
 EXTERIOR/OUTDOORS

<b>FACE</b>	MATERIAL: 3/4" THK. 2447 WHITE ACRYLIC, W/ KERF FOR RETURN	<b>WIRING</b>	SEE ELEC. NOTE. 120V PRIMARY IN J-BOX BY OTHERS
<b>VINYL</b>	N/A	<b>I-P. PRIMARY</b>	20aw FEED IN Ø1/2" SEAL-TITE w/ CONNECTORS
<b>COLOR</b>	N/A	<b>I-S. SECONDARY</b>	1L APPROVED CLASS II LOW VOLTAGE WIRING
<b>RETURN FINISH</b>	N/A	<b>I-C. CONNECTOR</b>	1L APPROVED ELEC. PASS-THRU CONNECTOR
<b>RETURN</b>		<b>I-D. DISCONNECT</b>	120V DISCONNECT SWITCH. LOCATION T.B.D.
<b>DEPTH</b>	2"	<b>POWER SUPPLY</b>	REMOTE LED POWER SUPPLY & DISCONNECT SWITCH
<b>MATERIAL</b>	0.040" ALUM.	<b>TYPE</b>	HOUSED IN WEATHER-PROOF, TOP ACCESS METAL BOX
<b>COLOR/ FINISH</b>	BLACK/ SATIN	<b>TYP. J-BOX TO HOUSE ELEC. CONNECTION TO PRIMARY</b>	
<b>BACK</b>		<b>VOLTAGE</b>	120V
<b>MATERIAL</b>	3mm ACM	<b>RACEWAY</b>	
<b>COLOR/ FINISH</b>	EXTERIOR: BLACK/ SATIN	<b>MATERIAL</b>	2" x 4" ALUM. RACEWAY w/ ACCESS
<b>INTERIOR: WHITE</b>		<b>COVER @ BOTTOM. TWO (2) 2" x 2" HEAVY WALL SQ. TUBES</b>	
<b>INSIDE OF SIGN</b>		<b>FINISH</b>	w/ 4" x 4" x 3/8" ALUM. MNTG. PLATES - GUSSETS AS NEEDED
<b>FINISH</b>	FINISHED WHITE	<b>COLOR/ FINISH</b>	BLACK/ SATIN
<b>ILLUMINATION</b>		<b>MOUNTING</b>	
<b>TYPE</b>	6500°K WHITE LEDS. SEE FABRICATOR NOTE.	<b>M-1:</b>	SEE INSTALL NOTE. SUPPORT BLOCKING BY OTHERS.
<b>MECH. NOTE</b>	ALL WIRES TERMINATED w/ FULL LISTED MECH. FASTENER	<b>M-2:</b>	3/16" MECH. FASTENERS TO BLOCKING. VERIFY
<b>MNTG. PANEL</b>		<b>M-3:</b>	FLUSH FIT COUNTER-SUNK SCREW TO NUTSERT
<b>MATERIAL</b>	CONTOUR CUT 1/8" ALUM. PANEL. BOND TO RACEWAY	<b>M-4:</b>	FLUSH FIT COUNTER-SUNK SCREW
<b>COLOR/ FINISH</b>	BLACK/ SATIN	<b>M-5:</b>	FLUSH FIT SET SCREW. FINISH HEAD TO MATCH
		<b>WEEP HOLE</b>	
		<b>TYPE:</b>	3/16" HOLE w/ LIGHT-BLOCKING COVER/ BAFFLE.
		<b>MIN. QTY.:</b>	ONE (1) PER LETTER & @ EVERY BOTTOM

**120V INSTALL**

- CUSTOMER G.C. TO PROVIDE ADEQUATE WOOD OR METAL BLOCKING IN CORRELATION W/ FACADE FRAMING AS REQUIRED.
- INSTALLER IS TO V.I.F. & PROVIDE THE PROPER NON-CORROSIVE MOUNTING HARDWARE TO ENSURE SAFE INSTALLATION.
- ALL EXTERIOR FACADE FINISHING TO BE WATER-TIGHT.
- INSTALLATION TO MEET CURRENT N.E.C., U.L. & LOCAL CODES.
- LOCATION OF THE DISCONNECT SWITCH AFTER INSTALLATION SHALL COMPLY WITH ARTICLE 680.5(A) (1) OF THE NATIONAL ELECTRICAL CODE.

**ELECTRICAL**

- ALL ELECTRICAL COMPONENTS TO BE U.L. APPROVED.
- CUSTOMER IS RESPONSIBLE FOR ONE (1) 120V 20a DEDICATED CIRCUIT w/ GROUNDING FOR SIGN TO WITHIN 4' OF SIGN.
- THIS SIGN IS INTENDED TO BE INSTALLED IN ACCORDANCE W/ THE REQUIREMENTS OF ARTICLE 680.5(A) OF THE NATIONAL ELECTRICAL CODE AND/OR OTHER APPLICABLE LOCAL CODES. THIS INCLUDES PROPER GROUNDING & BONDING OF THE SIGN.

**FABRICATOR**

- PLACEMENT OF LIGHTING ELEMENTS FOR OPTIMUM ILLUMINATION OF SIGN TO BE DETERMINED IN PRODUCTION.
- MANUFACTURER'S & U.L. LABELS TO BE APPLIED & VISIBLE FROM THE GROUND. LOCATED ON THE LAST CHANNEL LETTER OR END OF THE SIGN BODY/FREESTANDING SIGN.

ALL ELECTRICAL COMPONENTS ARE TO BE U.L. APPROVED

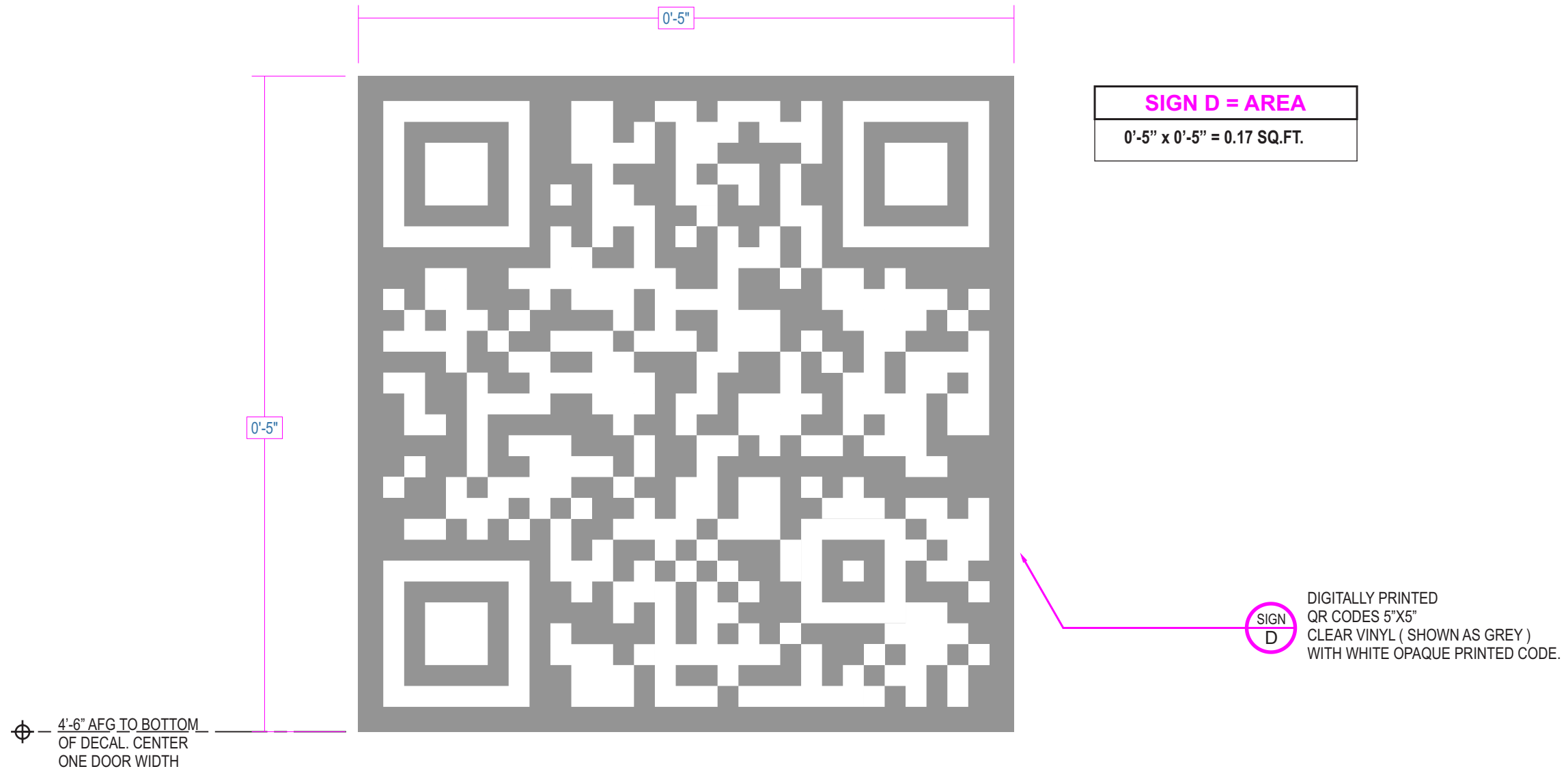


# SIGN D - DIGITALLY PRINTED QR CODE DECALS

D

SCALE: ACTUAL SIZE

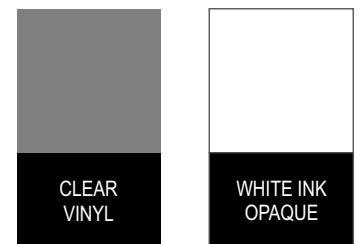
QTY.: TWO

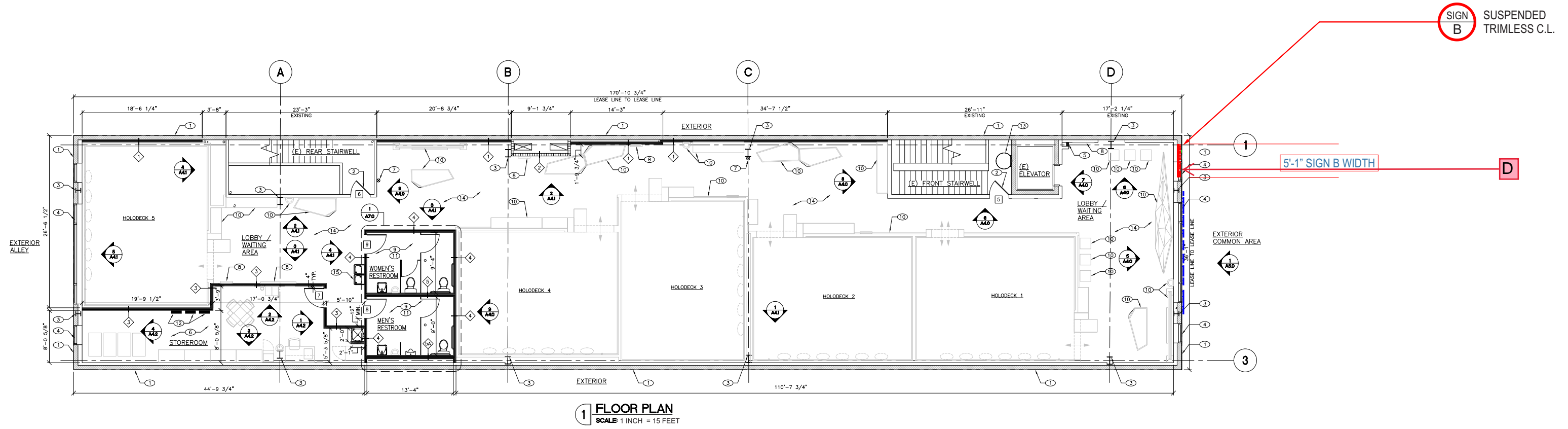


**Second surface door vinyl graphics**

**Qty: 2**

**0.17 SQ FT -each**





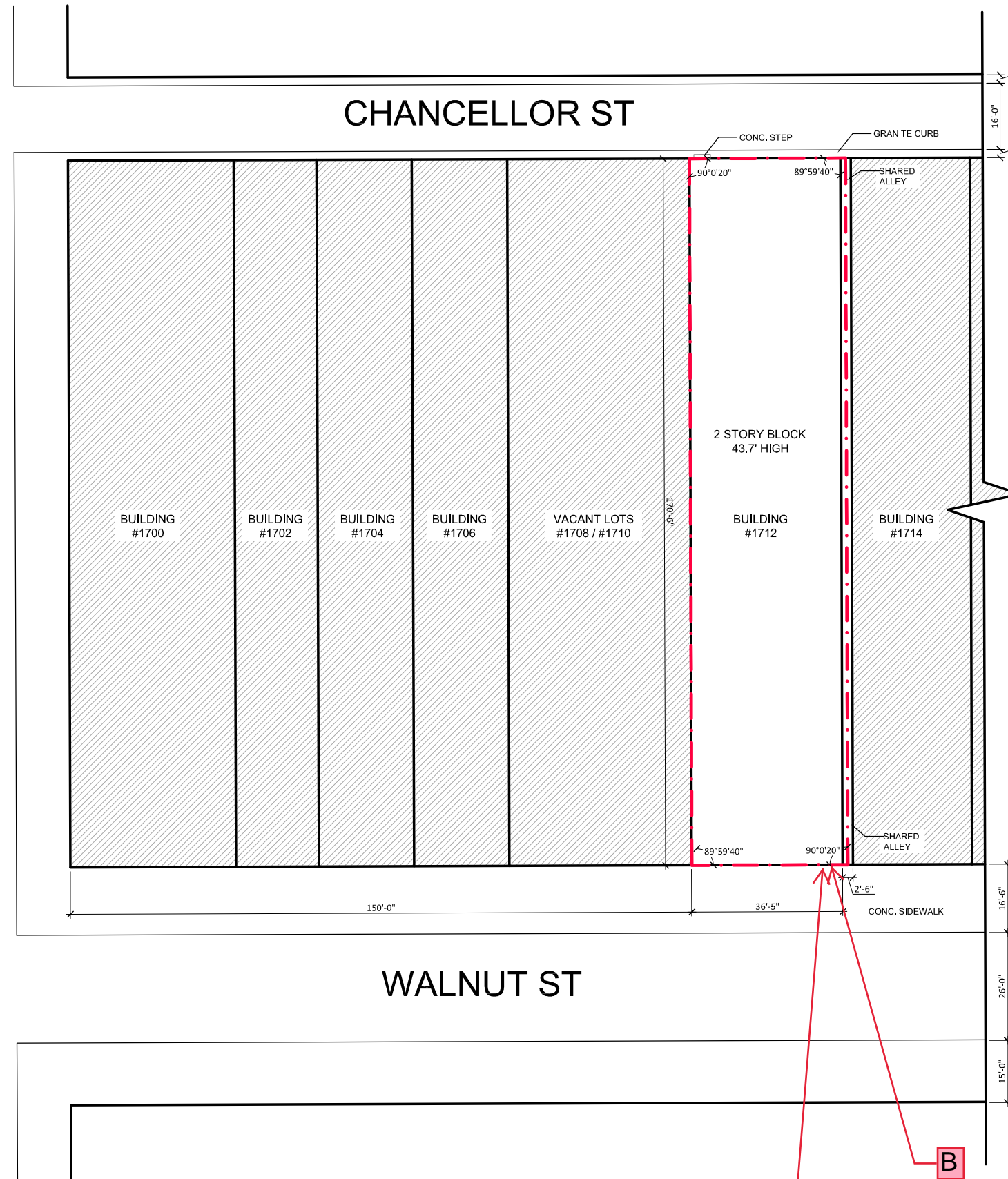
1 FLOOR PLAN  
SCALE: 1 INCH = 15 FEET



17TH ST

CHANCELLOR ST

WALNUT ST



SIGN B - Proposed one (1) statically LED-lit accessory sign 3.97 SQ FT  
SIGN D - Proposed second surface door vinyl, Qty of two (2), 0.17 SQ FT each  
All existing signage to be removed.



SCALE: 1/32" = 1'-0"

