

BROWN EXPEDITING SERVICES

March 10, 2025

Philadelphia Art Commission
1515 Arch Street, 13th Floor
Philadelphia, PA 19102

Re: 1734-36 Chestnut Street

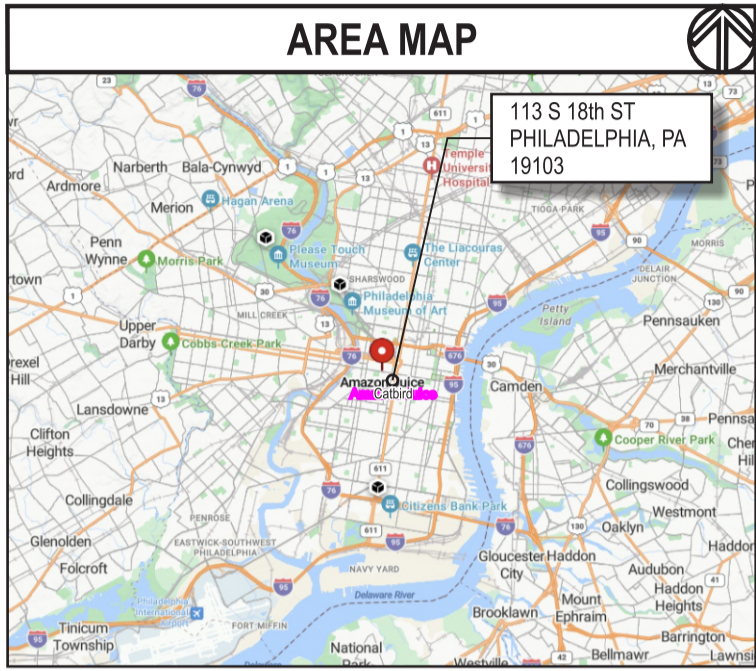
Dear Sign Committee,

Please see the attached drawing for the proposed 2'-3 1/2" x 5'-7 1/2" non illuminated wall sign and vinyl graphics that are less than the 20% allowed on the windows, for *Catbird*, a new tenant at 103 S. 18th Street, which is in the building known as 1734-36 Chestnut Street.

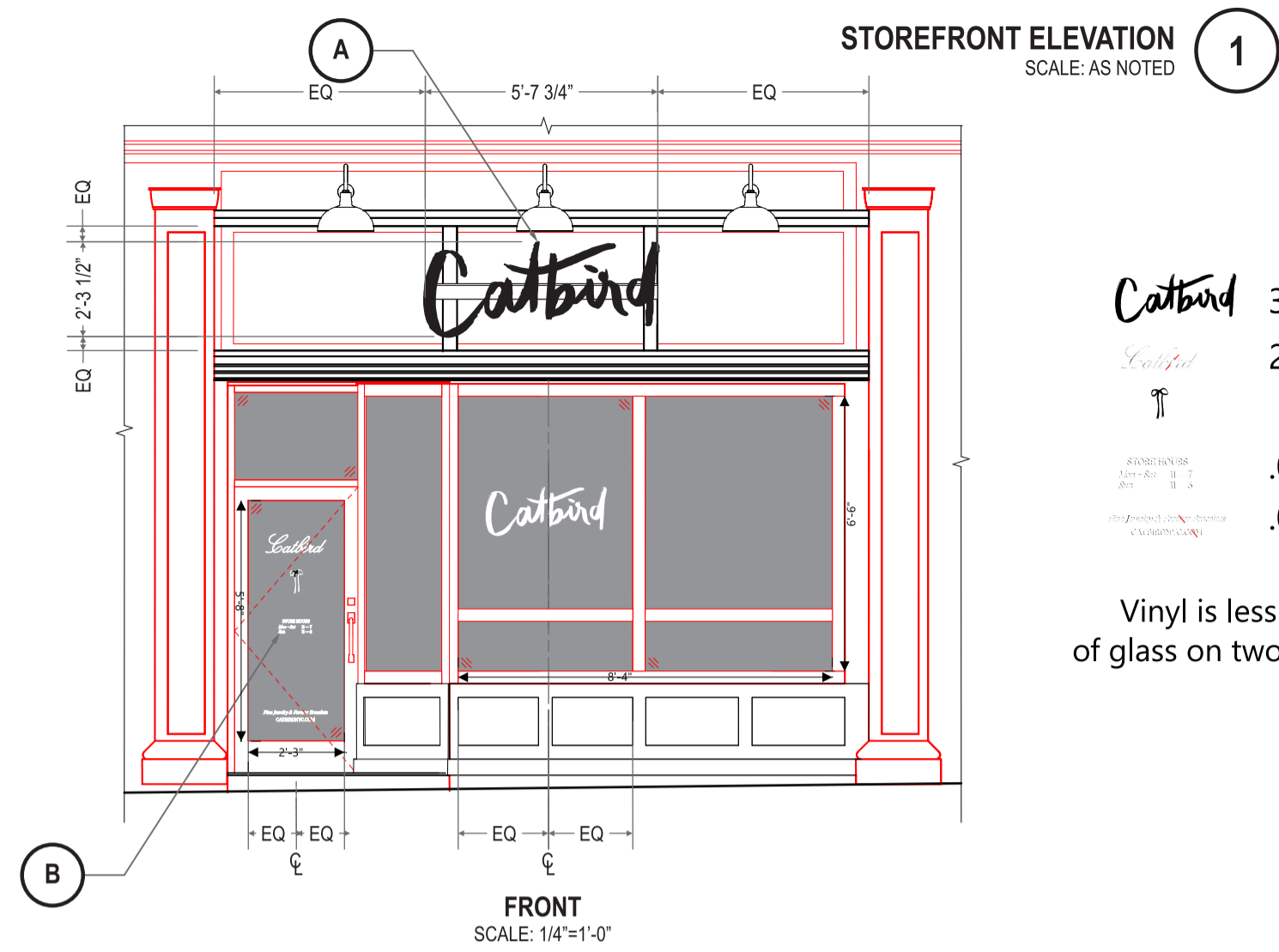
If you have any questions or need any further information, please contact me.

Thank you,
Linda Brown

PROJECT SCHEDULE		
SIGN TYPE/ DESCRIPTION:	QTY.:	PG.
A. NON-ILLUM. DIMN. LOGOSCRIPT ON MNTG. PANEL.	ONE (1)	3
B. LOGOSCRIPT DOOR DECAL.	ONE (1)	4
C. LOGOSCRIPT WINDOW DECAL.	ONE (1)	5



PROPOSED RENDERING
SCALE: N.T.S.



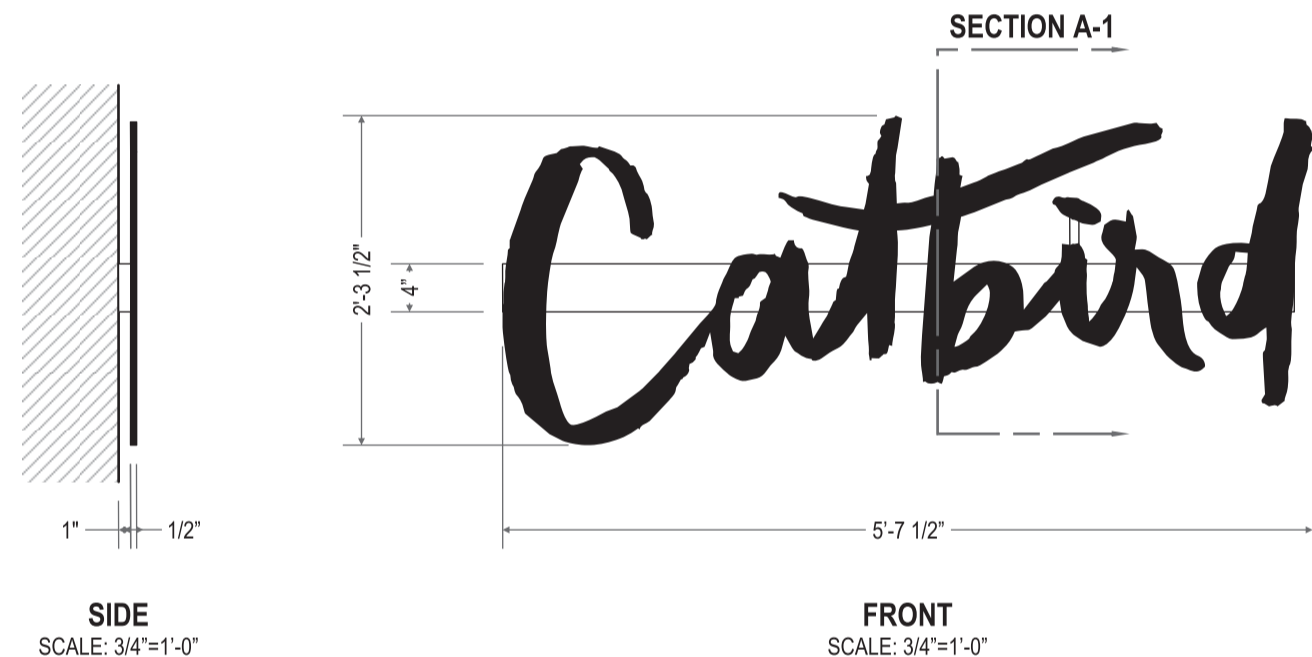
STOREFRONT ELEVATION
SCALE: AS NOTED

Catbird 3.53 s.f.
Catbird 2.15 s.f.
 ⚡ .017 s.f.
 ⚡ .025 s.f.

Vinyl is less than 20%
of glass on two glazed areas

FRONT
SCALE: 1/4"=1'-0"

NON-ILLUM. DIMN. LOGOSCRIPT ON MNTG. PANEL
SCALE: AS NOTED
QTY.: ONE (1)
AREA: 27.5" x 67.5" = 12.891' ∅



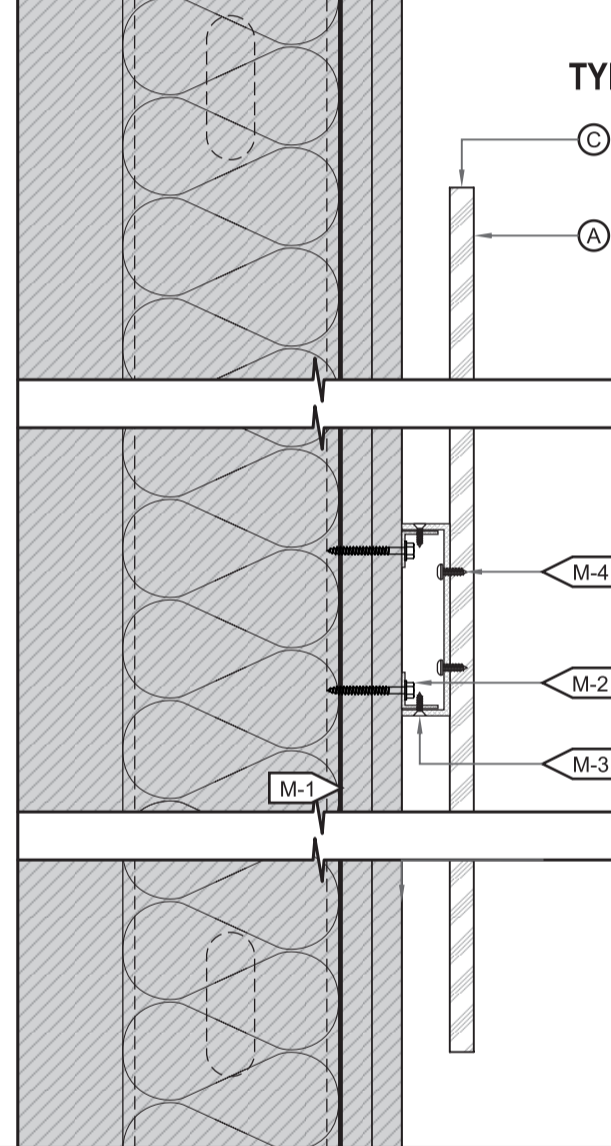
SIDE
SCALE: 3/4"=1'-0"

FRONT
SCALE: 3/4"=1'-0"

FINISH SCHEDULE

BLACK SATIN	TO MATCH EXISTING SIGN BAND FINISH
-------------	------------------------------------

TYP. FLUSH MOUNT DIMENSIONAL PLATE LETTER SECTION DETAIL
SCALE: N.T.S.



EXTERIOR/ OUTDOORS	
(A) FACE	
MATERIAL:	1/2" ACRYLIC PLATE.
COLOR/ FINISH:	BLACK/ SATIN.
VINYL:	N/A.
COLOR:	N/A.
(C) RETURN	
DEPTH:	1/2" O.A.
MATERIAL:	1/2" ACRYLIC PLATE.
COLOR/ FINISH:	BLACK/ SATIN.
(M) MNTG. PANEL	
MATERIAL:	BRAKE-FORM 1/8" ALUM. COVER.
COLOR/ FINISH:	PAINT TO MATCH EXISTING SIGN BAND FINISH, V.I.F.
(M) MOUNTING	
M-1:	SEE INSTALL NOTE. 5/8" SHEATHING ON STUD FRAME WALL.
M-2:	Ø1/4" WOOD LAG IN 3/4"x3/4" ALUM. ANGLE @ TOP & BOTTOM.
M-3:	FLUSH FIT COUNTER-SUNK SCREW. FINISH HEAD TO MATCH.
M-4:	MECH. FASTENER & ADHESIVE.

- INSTALL**
- CUSTOMER G.C. TO PROVIDE ADEQUATE WOOD OR MTL. BLOCKING IN CORRELATION W/ FACADE FRAMING AS REQUIRED.
 - INSTALLER IS TO V.I.F. & PROVIDE THE PROPER NON-CORROSIVE MOUNTING HARDWARE TO ENSURE SAFE INSTALLATION.
 - ALL EXTERIOR FACADE PENETRATIONS TO BE WATERTIGHT.
 - INSTALLATION TO MEET CURRENT N.E.C., U.L. & LOCAL CODES. LOCATION OF THE DISCONNECT SWITCH AFTER INSTALLATION SHALL COMPLY WITH ARTICLE 600.8(A) (1) OF THE NATION ELECTRICAL CODE

WINDOW DECALS
SCALE: 3/8"=1'-0"
QTY.: ONE (1)
AREA: VARIES ∅



FINISH SCHEDULE

OPAQUE WHITE VINYL

VINYL MATRIX	
V-1 VINYL:	DIE-CUT VINYL FILM.
COLOR:	OPAQUE WHITE.
FINISH:	MATTE
APPLICATION:	2nd SURFACE ADHESIVE
SURFACE:	EXISTING CLEANED GLASS, V.I.F.



11 Azar Court • P.O. Box 24186
Baltimore, Maryland 21227
T: 410-247-5300 • F: 410 247-1944
Reproduction In Whole or in Part
Prohibited without Express
Permission of PersonaTriangle © TSS

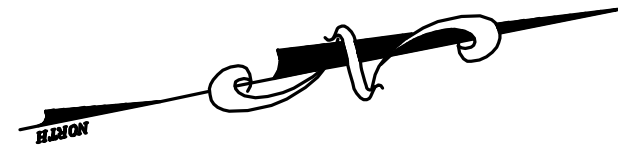
CLIENT & LOCATION



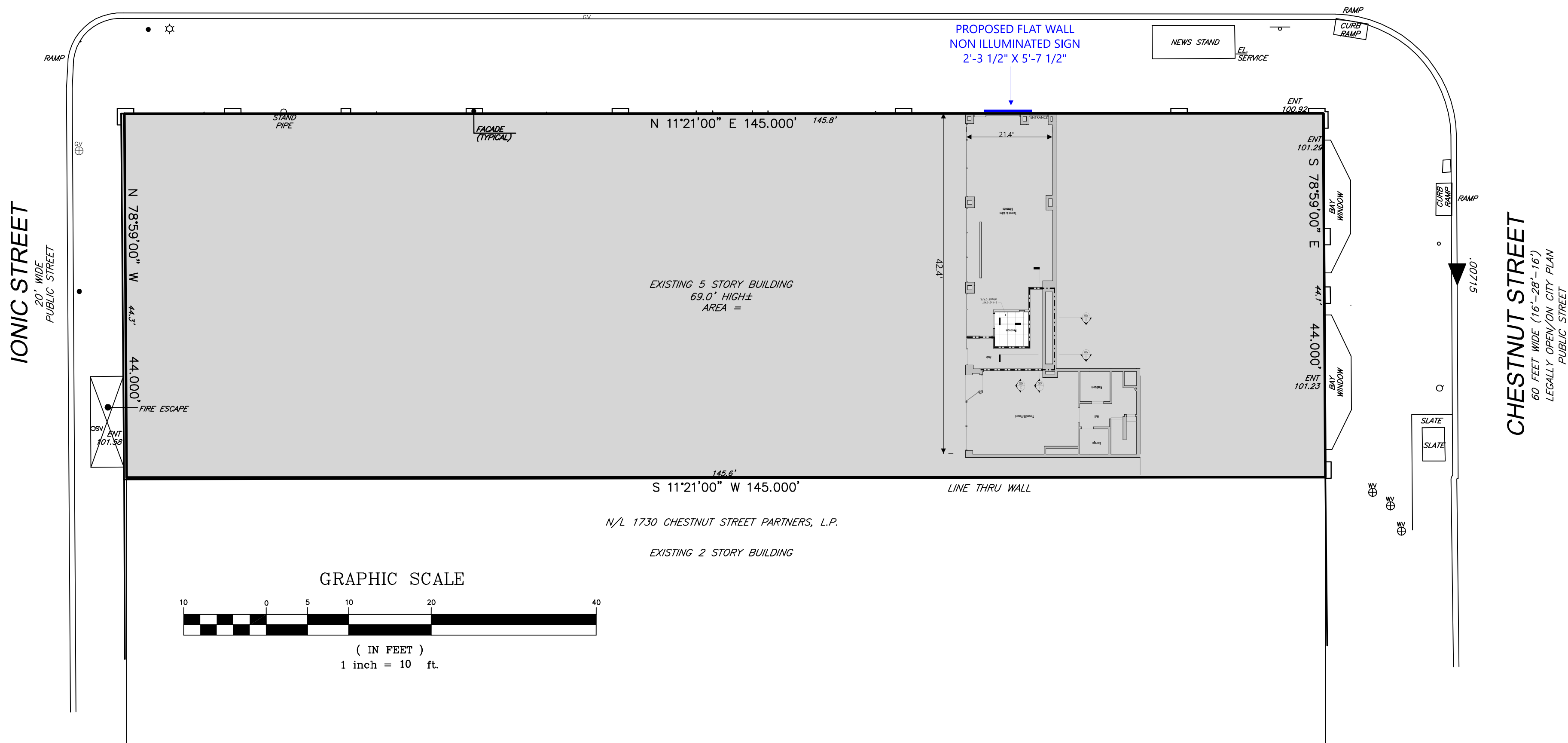
113 S 18th ST
PHILADELPHIA, PA 19103

LEAD NO.	DATE	REVIEW	SHEET NO.
224068-T5	RR/BMS		S001
SM/PM	ARTIST	SEG. NO.	
10/26/2024	JS		

1734 Chestnut Street
Philadelphia, PA 19103
a.k.a. 103 S. 18th Street



18TH STREET
50 FEET WIDE (12'-26"-12')
LEGALLY OPEN/ON CITY PLAN
PUBLIC STREET



GRAPHIC SCALE



(IN FEET)
1 inch = 10 ft.

Catbird

1734-36 Chestnut Street
a.k.a. 103 S. 18th St.

103 S. 18th STREET



LOOKING NORTH ON 18TH STREET



LOOKING SOUTH ON 18TH STREET

