

**Forman Sign Company  
10447 Drummond Road  
Philadelphia, PA 19154  
215-827-6500  
215-827-6501 FAX**

March 8, 2025

Philadelphia Art Commission  
One Parkway  
1515 Arch Street, 13<sup>th</sup> Floor  
Philadelphia, PA 19102  
Attn: Alex Smith  
215-683-2095

Re: Bullseye  
1509 Walnut St.

Proposed: One 30"x127" single-faced wall sign. Painted aluminum face and sides. Internally illuminated with white LEDs. Routed copy filled with push-thru clear acrylic with frosted white vinyl overlays.

Thank you,



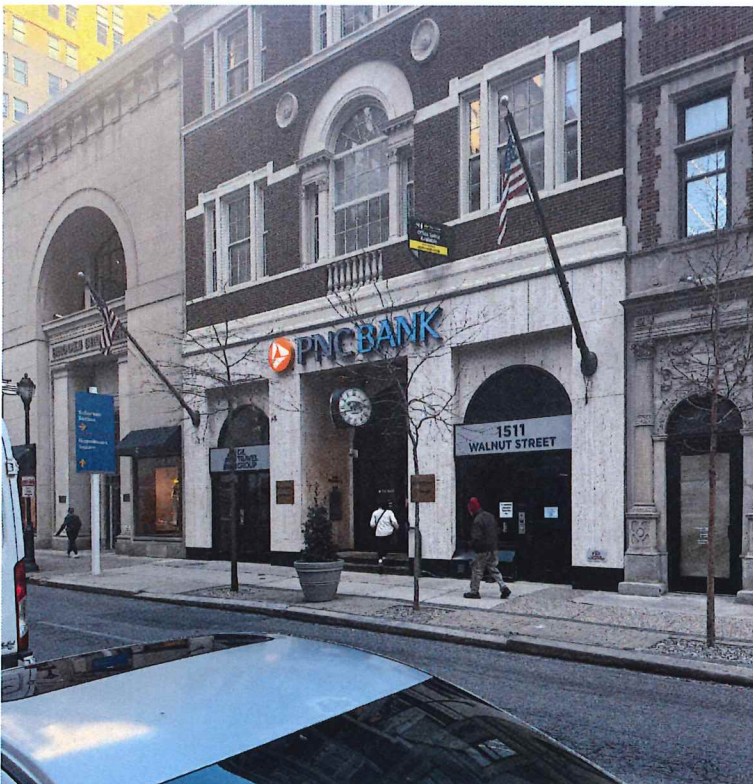
Sharon Brandt

**Bullseye – 1509 Walnut St.**

**These photos have not been manipulated in any way on a computer**



Straight on



Building to left



Building to right



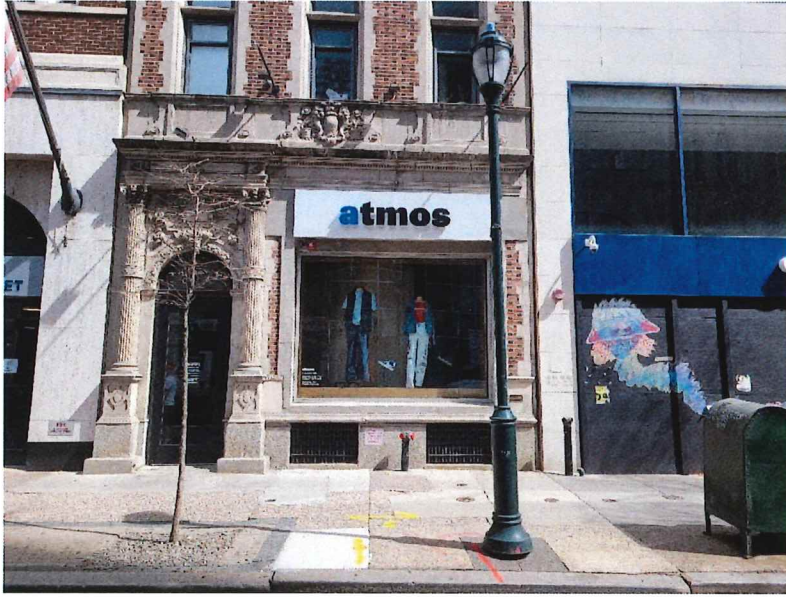
Looking down Walnut St. to left



Looking down Walnut St. to right

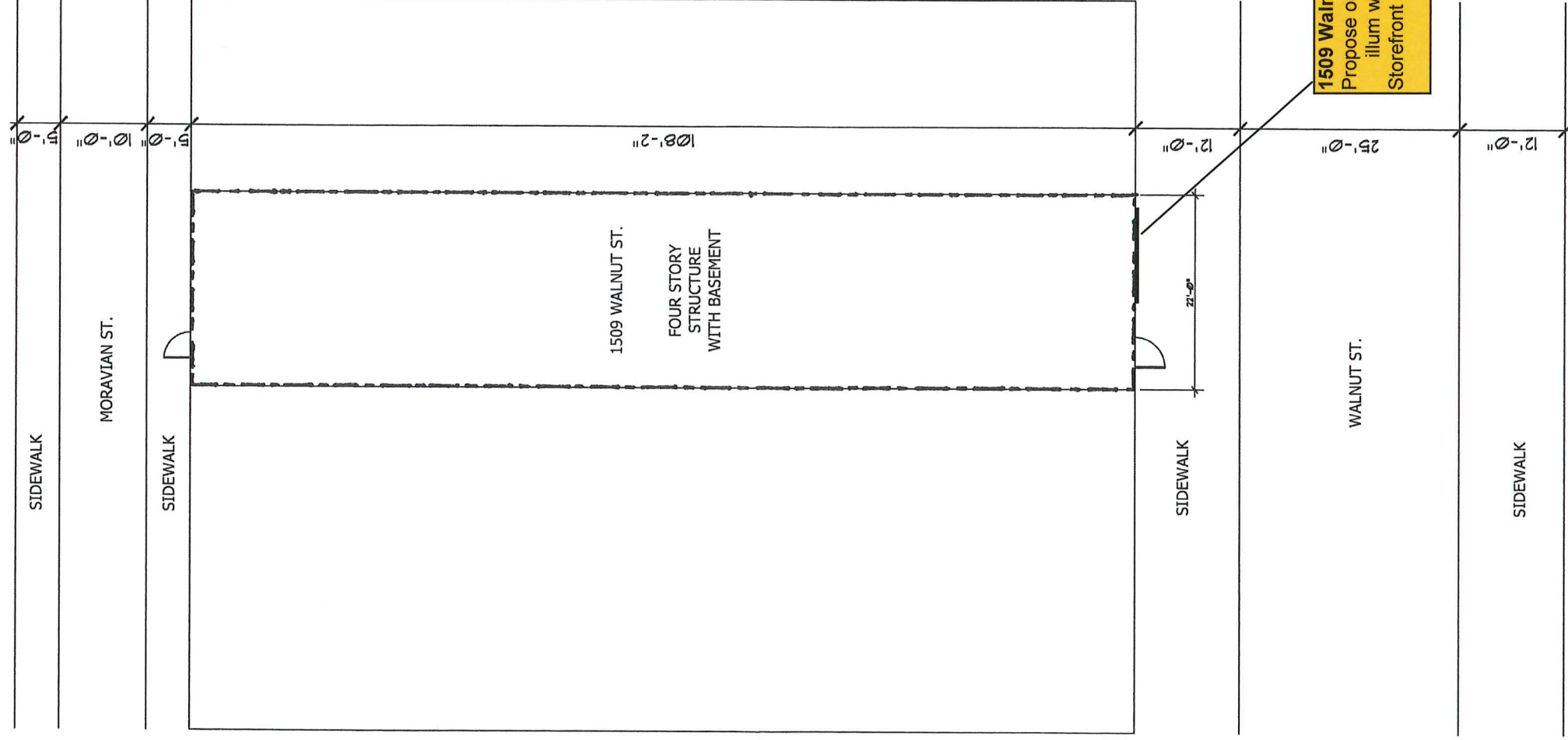


Looking across Walnut St.



Previous sign – File #160-20

# SITE MAP



1 SITE PLAN  
ADJ SCALE: 1/16" = 1'-0"

STORE SIGNAGE: FRONT ELEVATION (OPT 1)



**Bullseye**

LOCATION: 1509 Walnut St  
Philadelphia, PA 19102

SCALE: as noted

FILE: Bullseye\_Walnut\_St\_sign\_package\_Opt1\_3-10-25

PG: 1 of 3

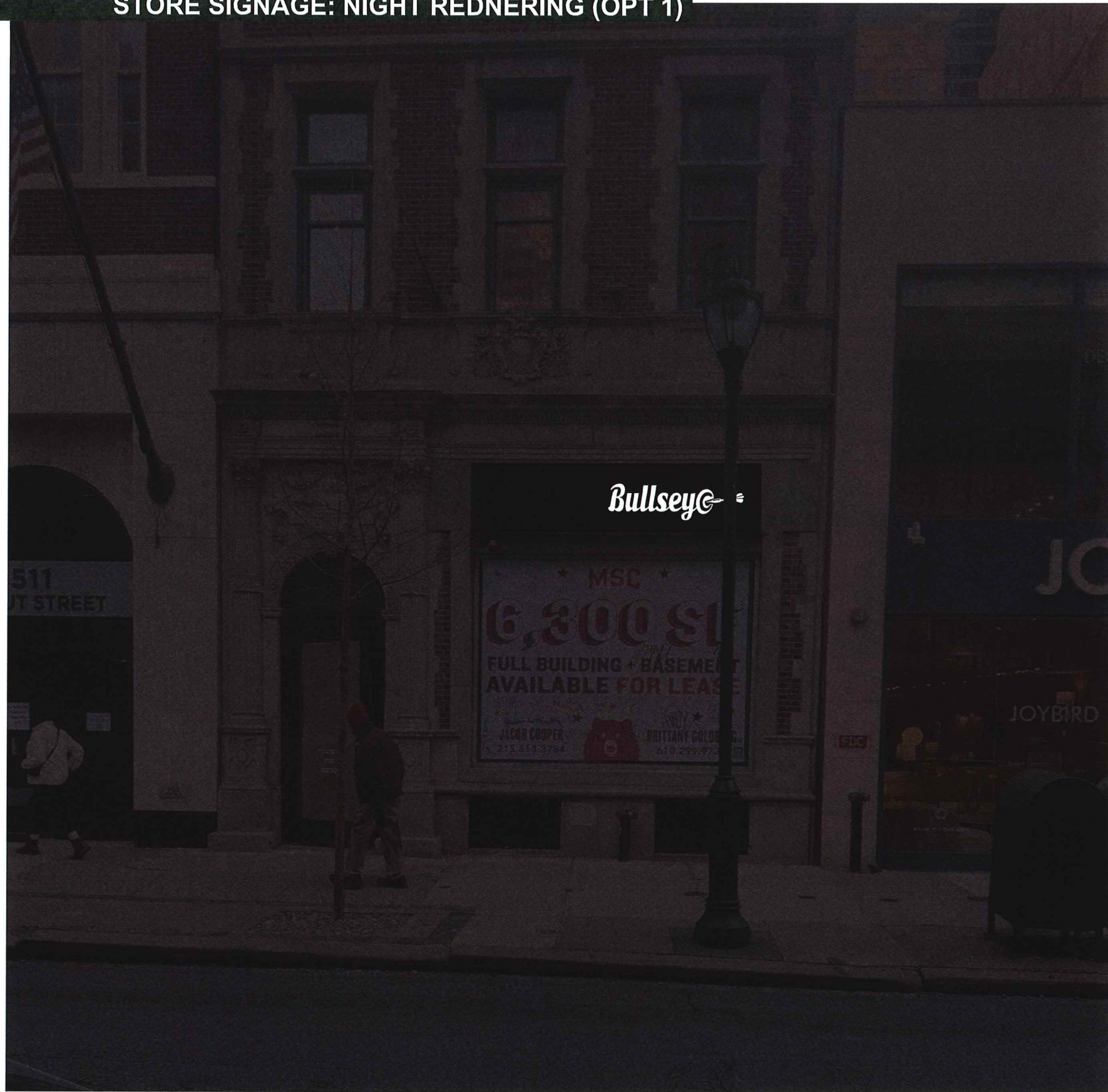
DRAWN BY  
nm

DATE: 02/10/25  
NIGHT RENDERING: 03/10/25

215-827-6500 • 215-827-6501 fax  
barryj@formansign.com  
©2007 formansign company. All rights reserved. No part of this document or the related files may be reproduced or transmitted in any form, by any means electronic, copying, or otherwise without the prior written permission of formansign company.

**formansigns**  
10447 Drummond Rd, Philadelphia, PA 19154

STORE SIGNAGE: NIGHT RENDERING (OPT 1)



**Bullseye**

LOCATION: 1509 Walnut St  
Philadelphia, PA 19102

SCALE: as noted

FILE: Bullseye\_Walnut\_St\_sign\_package\_Opt 1\_3-10-25

PG: 2 of 3

DRAWN BY

nm

DATE:	02/10/25
NIGHT RENDERING	03/10/25

215-827-6500 • 215-827-6501 Fax  
barryj@formansign.com  
©2007 forman sign company. All rights reserved. No part of this document or the related files may be reproduced or transmitted in any form, by any means electronic, copying, or otherwise without the prior written permission of forman sign company.

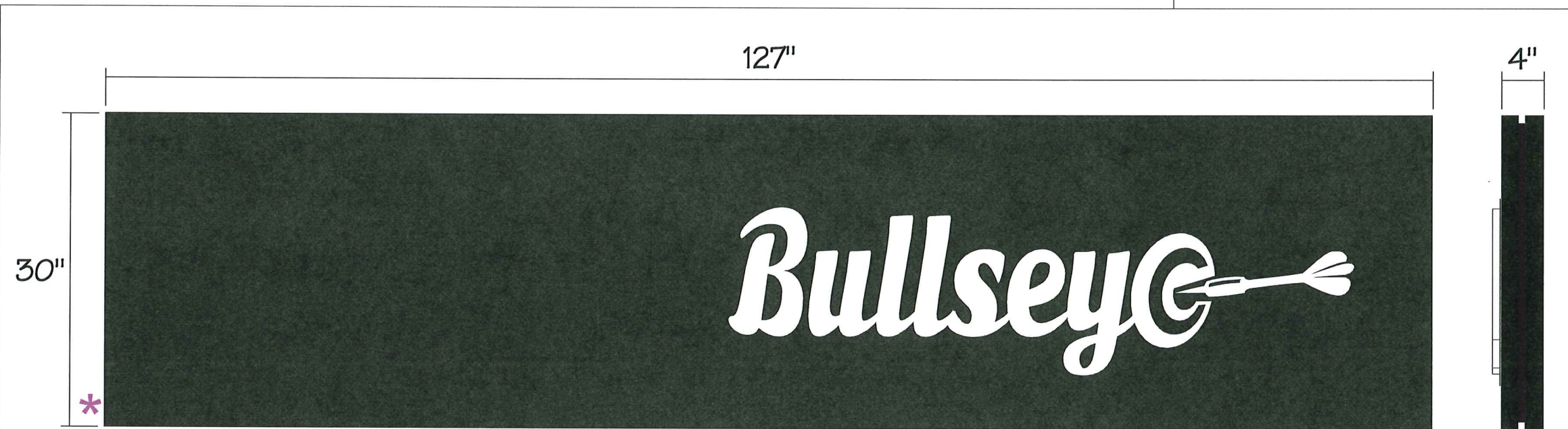
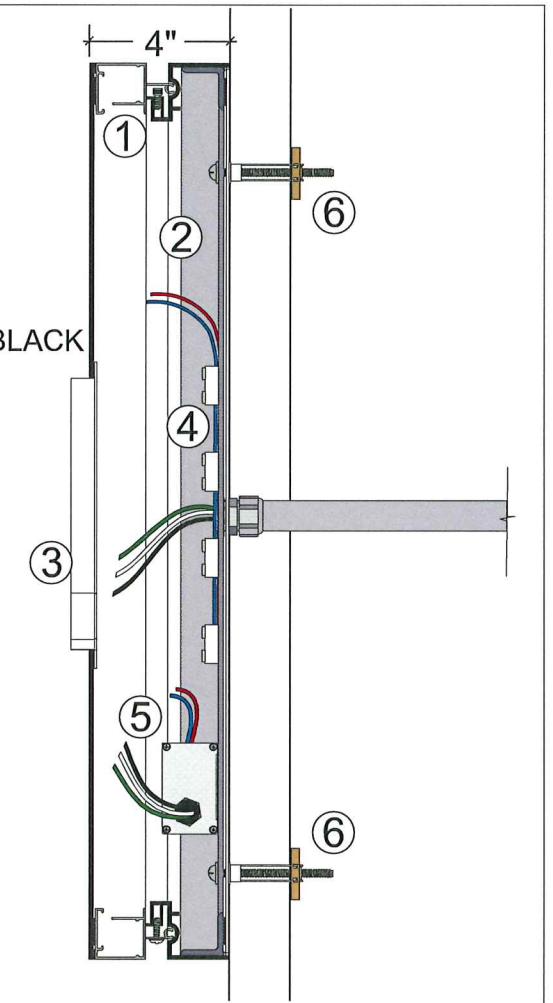
**formansigns**  
10447 Drummond Rd, Philadelphia, PA 19154



**STORE SIGNAGE: PUSH THRU CABINET**

**SECTION VIEW**  
Typical Detail  
nts

- 1) Extruded aluminum hinged retainer w/ .125" aluminum "bleed" face - MATTE BLACK
- 2) Internal aluminum angle frame
- 3) Push-thru copy - 1/2" clear acrylic w/ 1/4" projection from face. etch look frosted vinyl on 1st surface & translucent white diffuser on 2nd surface
- 4) LEDs - white
- 5) Power supply w/ Class II low voltage secondary wiring to LEDs & 120 Volt primary service w/ 20 amp weatherproof cut-off switch on side
- 6) Masonry fasteners - toggle bolts shown



FACE VIEW

SIDE VIEW

DETAIL VIEW  
SCALE: 1" = 1'-0"

**OPTION 1**

\* 20amp rated weatherproof Cut-off switch mounted to side of sign