



February 25, 2025

Philadelphia Art Commission  
1515 Arch Street  
Philadelphia, PA 19102

RE: SEPTA Erie Station – Elevator Relocation  
JMT Job No. 19-00242-011  
SEPTA GEC 21F-11

Members of the Philadelphia Art Commission:

Johnson, Mirmiran & Thompson, Inc. (JMT) and SEPTA are requesting to be placed on the March 11<sup>th</sup>, 2025, Art Commission Meeting to present design revisions to for the street level elevator enclosure at Erie Station. SEPTA owns and operates the station including new work once constructed. JMT is the architect and engineer of record for the project.

**Project Information:**

At the Erie Station, SEPTA is providing three new elevators and modifying station level areas to provide ADA accessibility and a state of good repair. Erie Station construction work is currently progressing; however, due to unforeseen conditions, the project team has determined to relocate the street level elevator “PE-1” to a different portion of the “BGE triangle” traffic island. The new location of the elevator also requires redesign of planned streetscaping into a different configuration.

JMT and SEPTA had presented this project to the Art Commission and received approval for original design on July 20, 2022.

**Project Scope:**

The revisions include the design for the PE-1 elevator enclosure and streetscaping only. The PE-1 elevator will be relocated approximately 25 ft from its original location within the BGE Triangle. The enclosure will also include glass block versus clear glass to reduce vandalism and associated costs of repairs. Planned headhouse height, signage, and granite base materials will not change. This work is also coordinated with ongoing City Streets Department project for BGE Streetscaping.

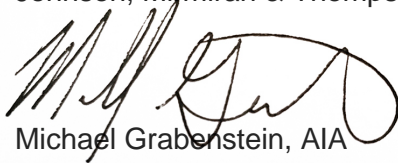
Previous project scope presented, approved, and not changed include:

- Signage and improvements at street level stairway entrances.
- Streetscaping outside of the BGE triangle.
- Street, curb ramps, and bike lanes.
- Station level work below grade.

Should there be any updates we will provide notes with imagery on submission by March 5th. If you have any questions or need further information, please do not hesitate to contact me at 443-528-7840 or [mgrabenstein@jmt.com](mailto:mgrabenstein@jmt.com).

Very truly yours

Johnson, Mirmiran & Thompson, Inc.

A handwritten signature in black ink, appearing to read 'M. Grabenstein', written over a faint, illegible background.

Michael Grabenstein, AIA  
Project Manager



## Erie Station - ADA Improvements



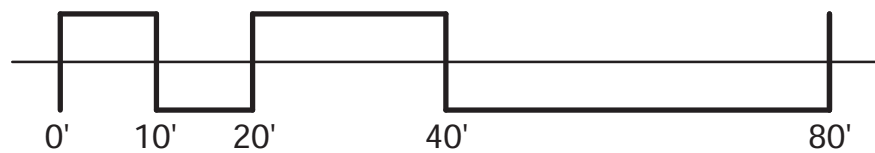
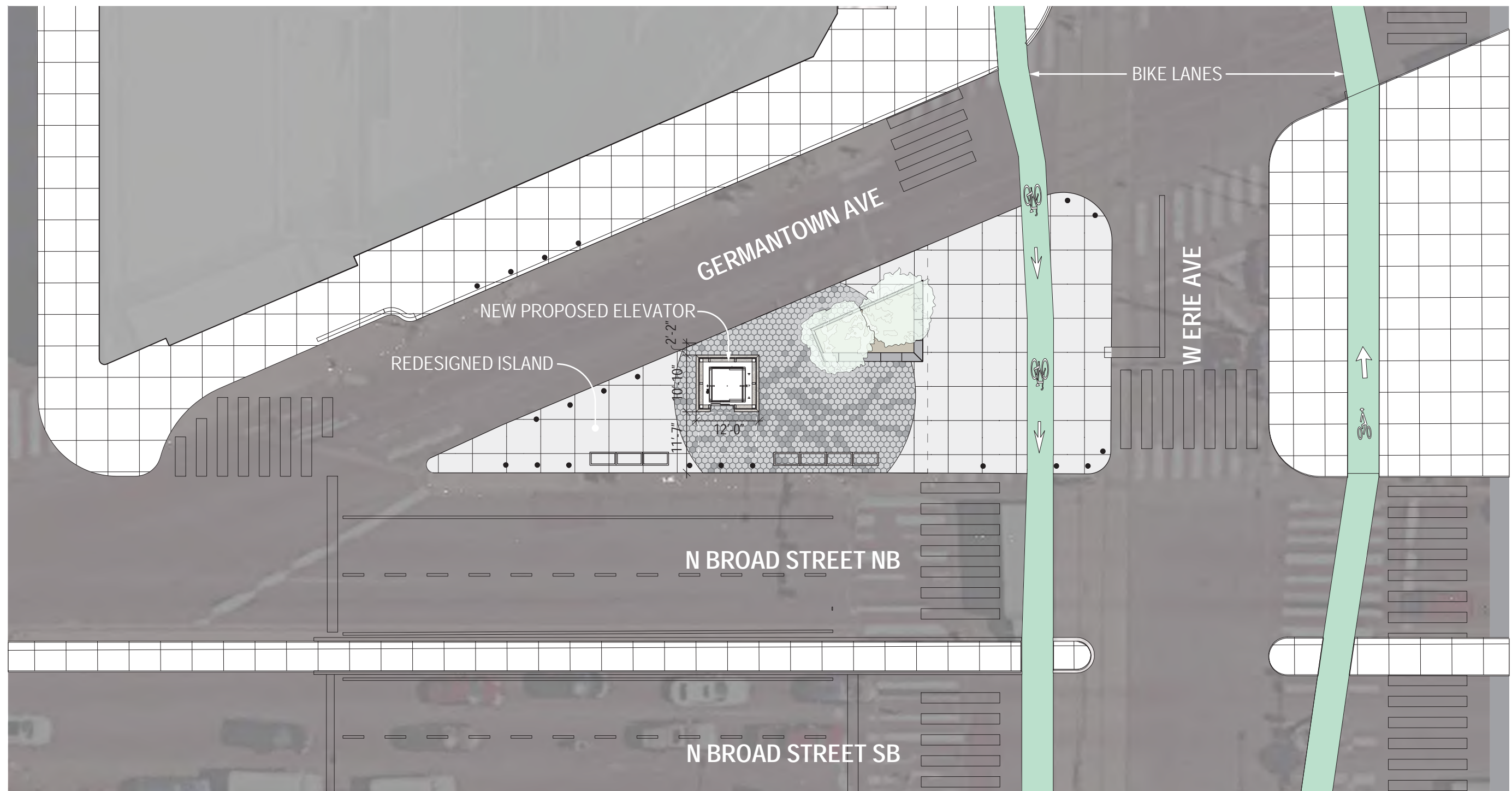
March 12, 2025





03/12/25



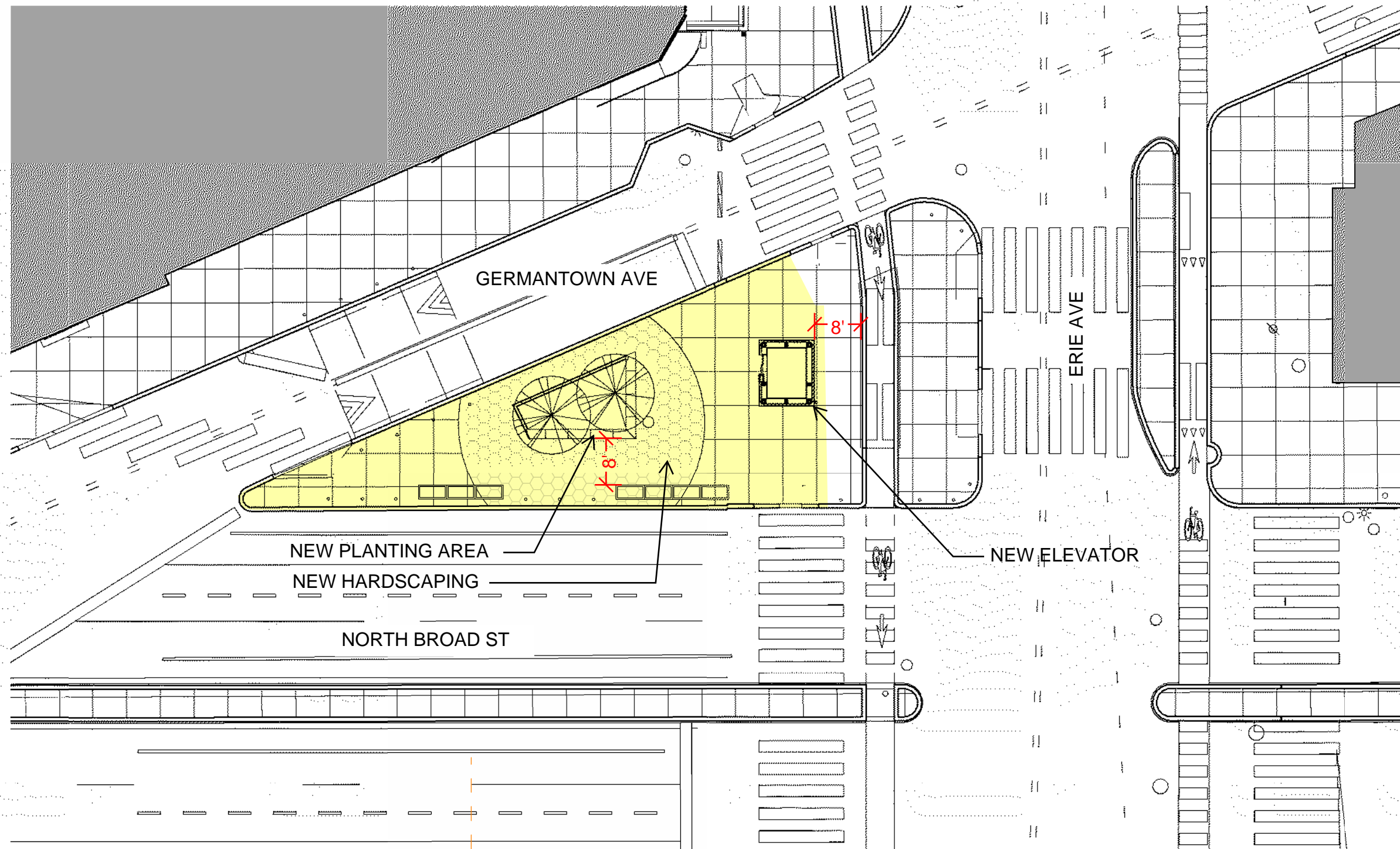


03/12/25



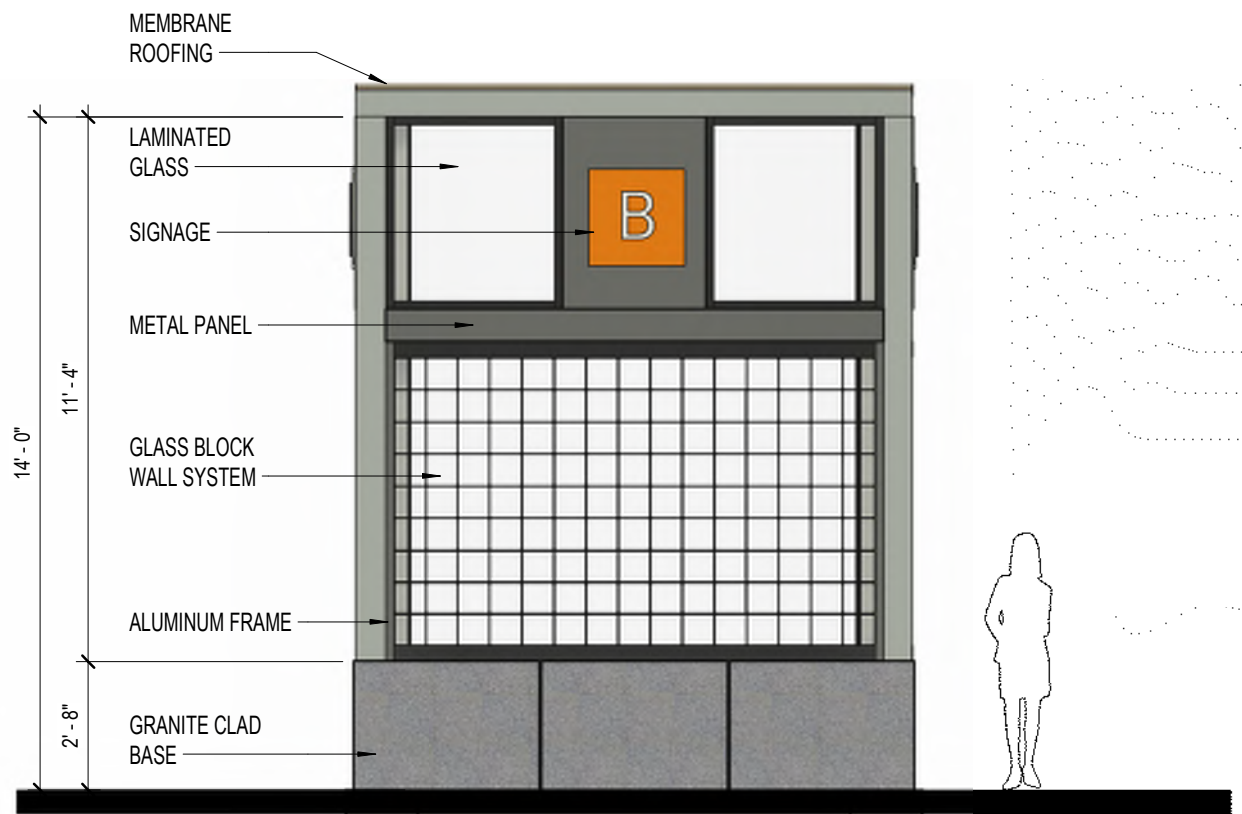
**ERIE STATION - ADA IMPROVEMENTS**  
PREVIOUSLY APPROVED SITE PLAN



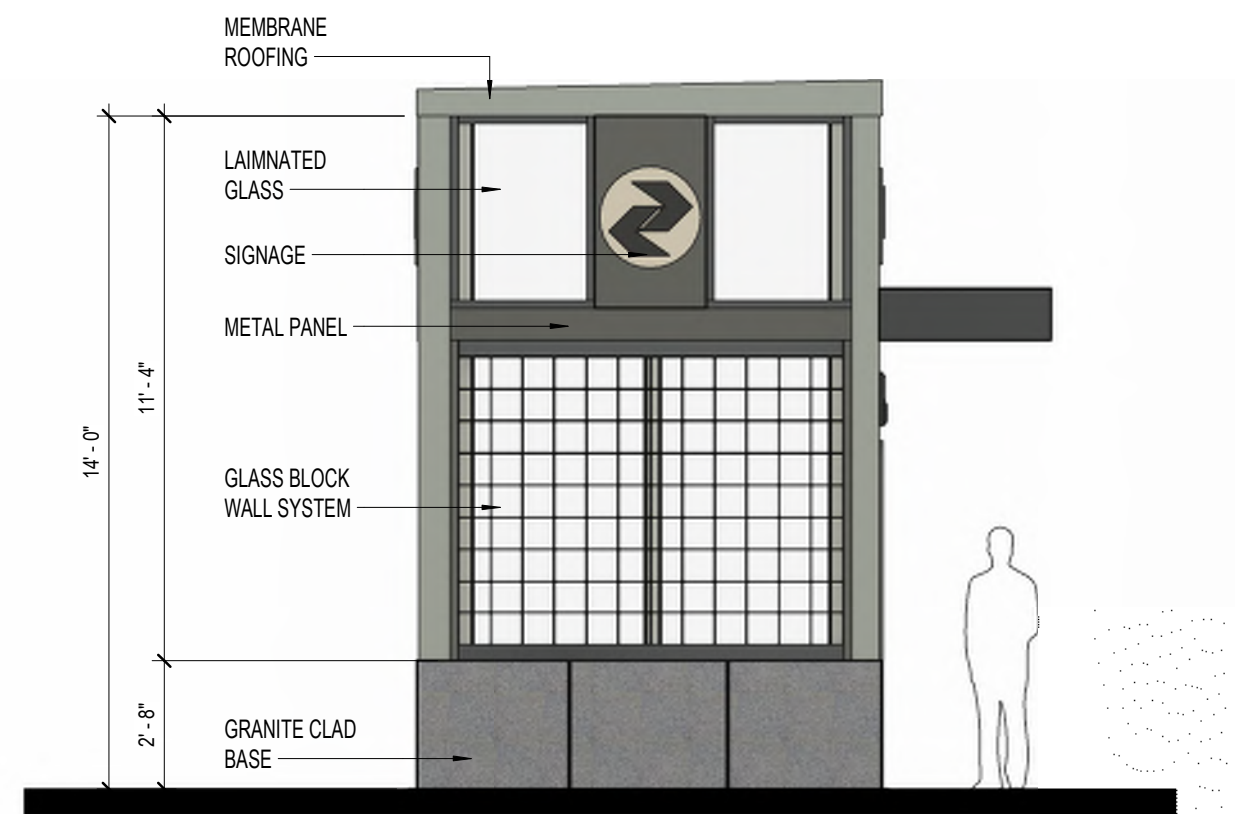
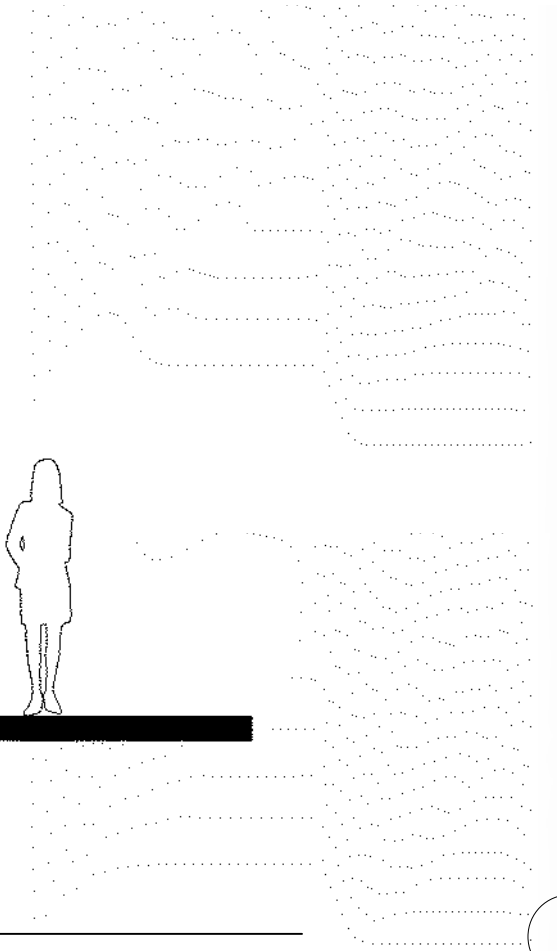


 = AREA OF TRIANGLE WORK BY SEPTA

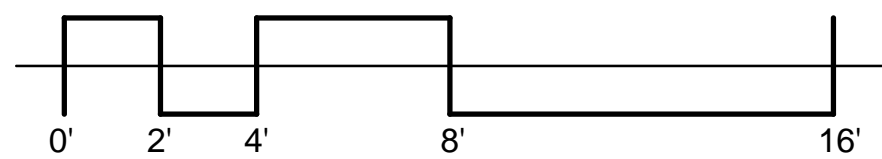
**ERIE STATION - ADA IMPROVEMENTS  
SITE PLAN**



2 SOUTH ELEVATOR ELEVATION  
1/4" = 1'-0"



1 EAST ELEVATOR ELEVATION  
1/4" = 1'-0"



03/12/25



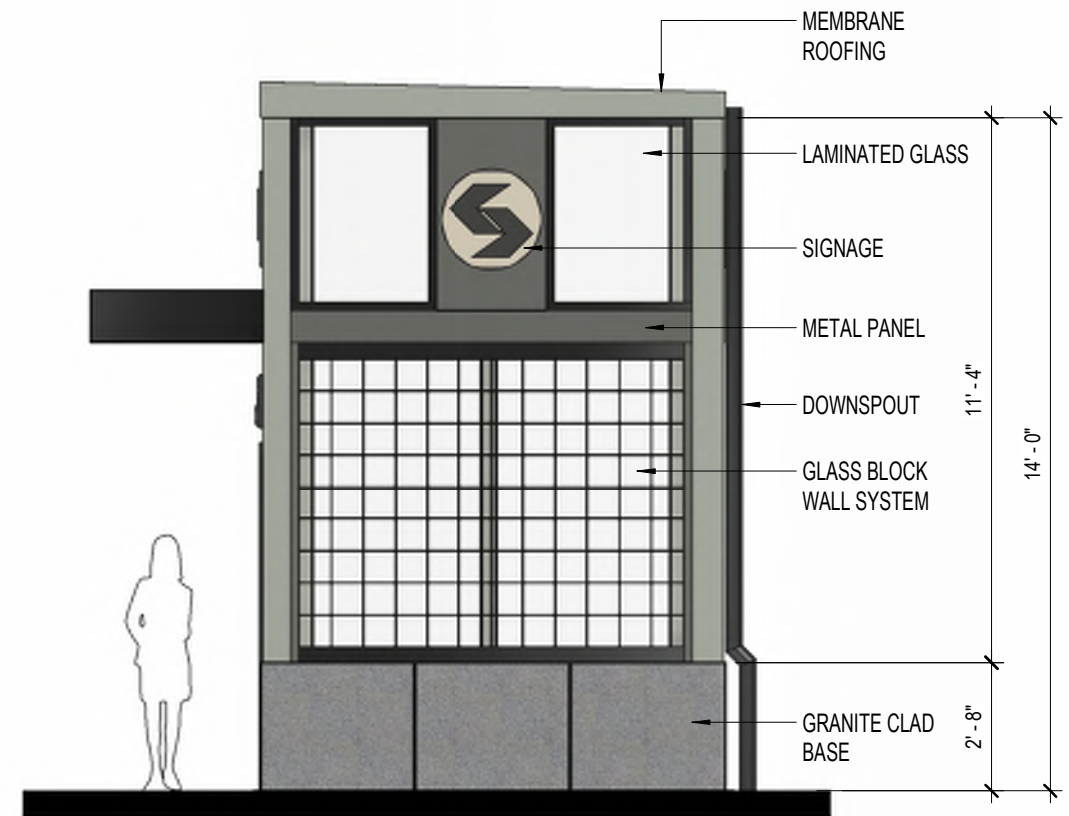
ERIE STATION - ADA IMPROVEMENTS  
ELEVATOR ELEVATIONS



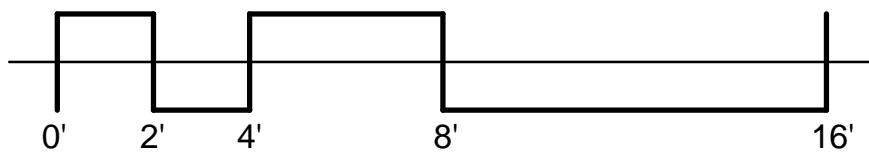




**2** NORTH ELEVATOR ELEVATION  
1/4" = 1'-0"



**1** WEST ELEVATOR ELEVATION  
1/4" = 1'-0"



03/12/25





ELEVATOR AND  
LANDSCAPE TO  
BE RELOCATED

03/12/25





03/12/25





03/12/25



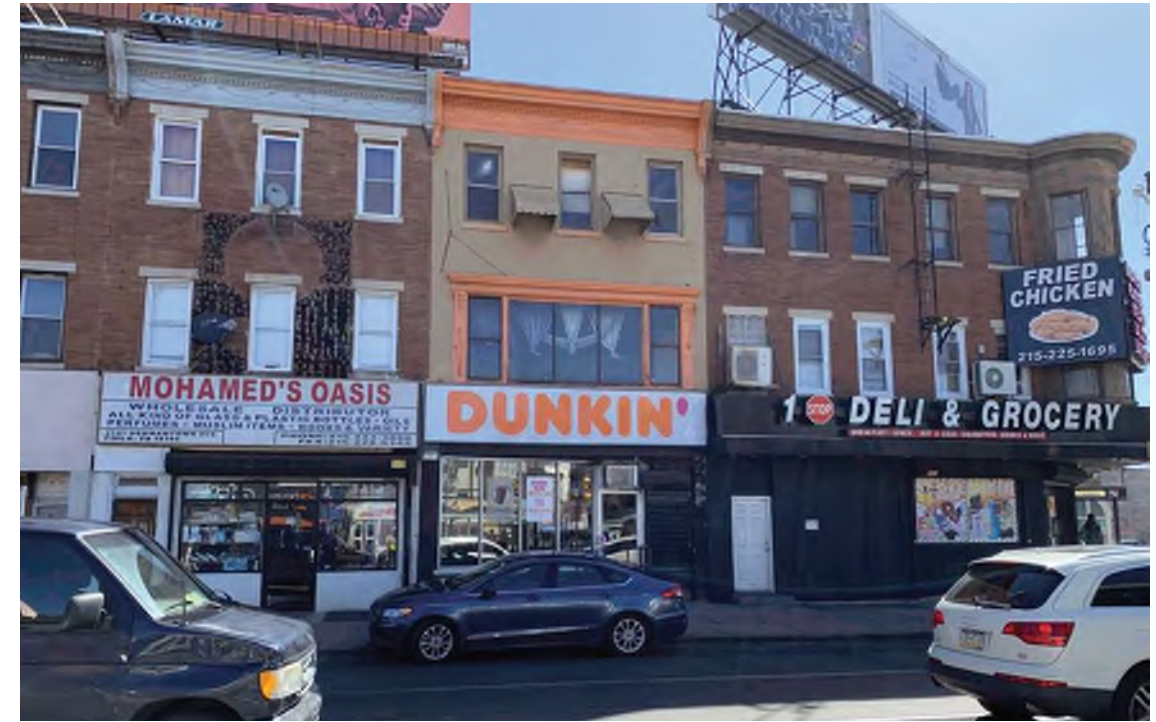


03/12/25





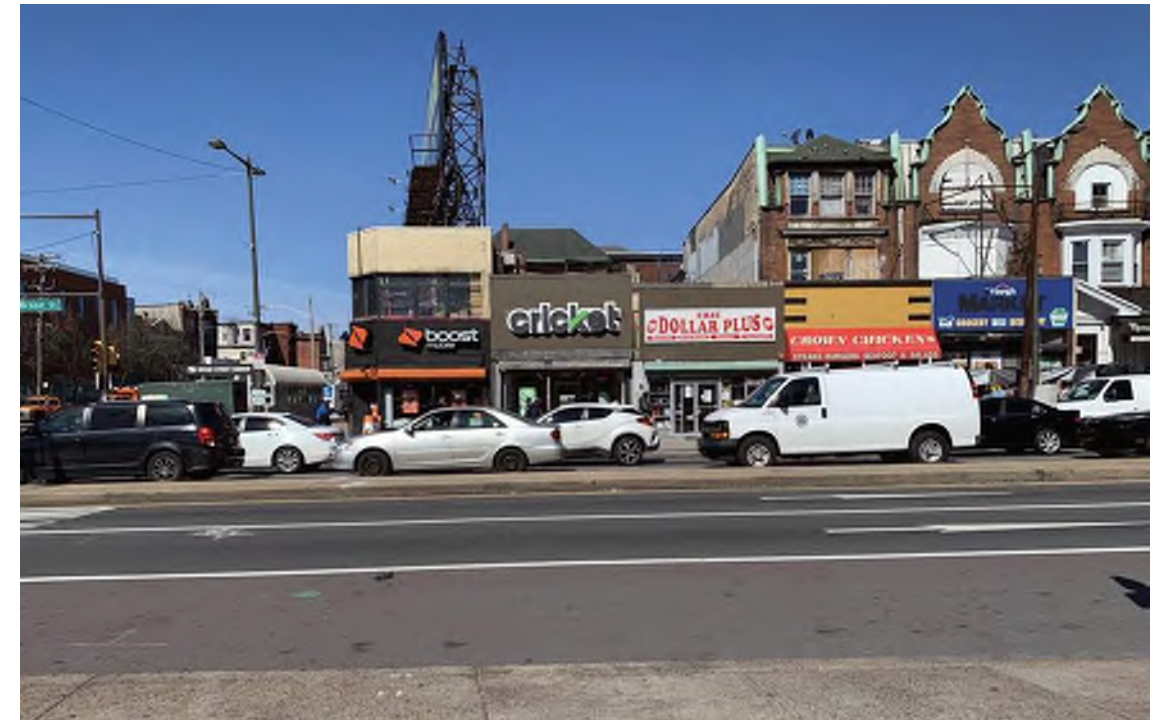
VIEW FROM ISLAND LOOKING NORTH



VIEW FROM ISLAND LOOKING EAST



VIEW FROM ISLAND LOOKING SOUTH



VIEW FROM ISLAND LOOKING WEST





LOOKING NORTH



LOOKING NORTH - EXISTING BUS SHELTER



LOOKING WEST - BUS SHELTER



LOOKING WEST