



February 25, 2025

Philadelphia Art Commission
1515 Arch Street
Philadelphia, PA 19102

RE: SEPTA 37th Street Station – Stair Headhouse Redesign
JMT Job No. 19-00242-004
SEPTA GEC 21F-04

Members of the Philadelphia Art Commission:

Johnson, Mirmiran & Thompson, Inc. (JMT) and SEPTA are requesting to be placed on the March 11th, 2025, Art Commission Meeting to present design revisions to stairway headhouses at 37th Street Station. SEPTA owns and operates the station including new work once constructed. JMT is the architect and engineer of record for the project.

Project Information:

At the 37th Street Station, SEPTA is providing two new elevators and modifying station level platforms to provide ADA accessibility to the station and prepare for new trolley cars as part of the Trolley Modernization initiative. A portion of the scope includes improving vertical circulation with accessibility improvements to stairs and railings and providing headhouses for weather protection and enhanced security.

JMT and SEPTA had presented this project during the November 2023 Art Commission Meeting and received approval for original design. Since the presentation, UPenn has requested a design modification to change the curved roof of stairway headhouses to be a single slope roof with straight-line profiles.

Project Scope:

The revisions include the design for the stair headhouse roofs only, which are based on the 34th Street Station headhouses also on UPenn campus.

Previous project scope presented, approved, and not changed include:

- Surface level improvement include the westbound elevator at a curb bumpout extension on Spruce Street, an eastbound elevator with an entrance at Woodland Walk near the Wistar Institute, and headhouses at two existing westbound stairwells.
- Each elevator includes an impact resistant concrete base to 32-inches above grade. The westbound elevator headhouse base is clad in granite, which is a SEPTA standard material to prevent abuse and damage in high traffic areas. The eastbound headhouse base is clad in brick

to match Woodland Walk masonry walls. Each elevator headhouse includes glass block from the base to bottom of canopy and a clear glazing band near their cap. Metal is stainless steel framing, paneling, and trim.

- Two stairways at the station have historically designated cast iron railings to provide fall protection. The railings are approximately 4-inch tubes with plate infills. JMT's proposed design seeks to overlay at the historic railings, maintain their visibility, and not disturb their finish, materials, or connections. No portion of the headhouse connects to the historic railing or the concrete base.
- Signage at the headhouses will be provided in accordance with SEPTA's current sign rebrand standards. At 37th Street, this includes white text over a base of lime green or black color branding for the Trolley line.

Should there be any updates we will provide notes with imagery on submission by March 5th. If you have any questions or need further information, please do not hesitate to contact me at 443-528-7840 or mgrabenstein@jmt.com.

Very truly yours

Johnson, Mirmiran & Thompson, Inc.



Michael Grabenstein, AIA
Project Manager

S UNIVERSITY AVE

WALNUT STREET

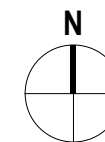
PROJECT
LOCATIONS

UPENN

WISTAR INSTITUTE

WOODLAND WALK

SPRUCE STREET

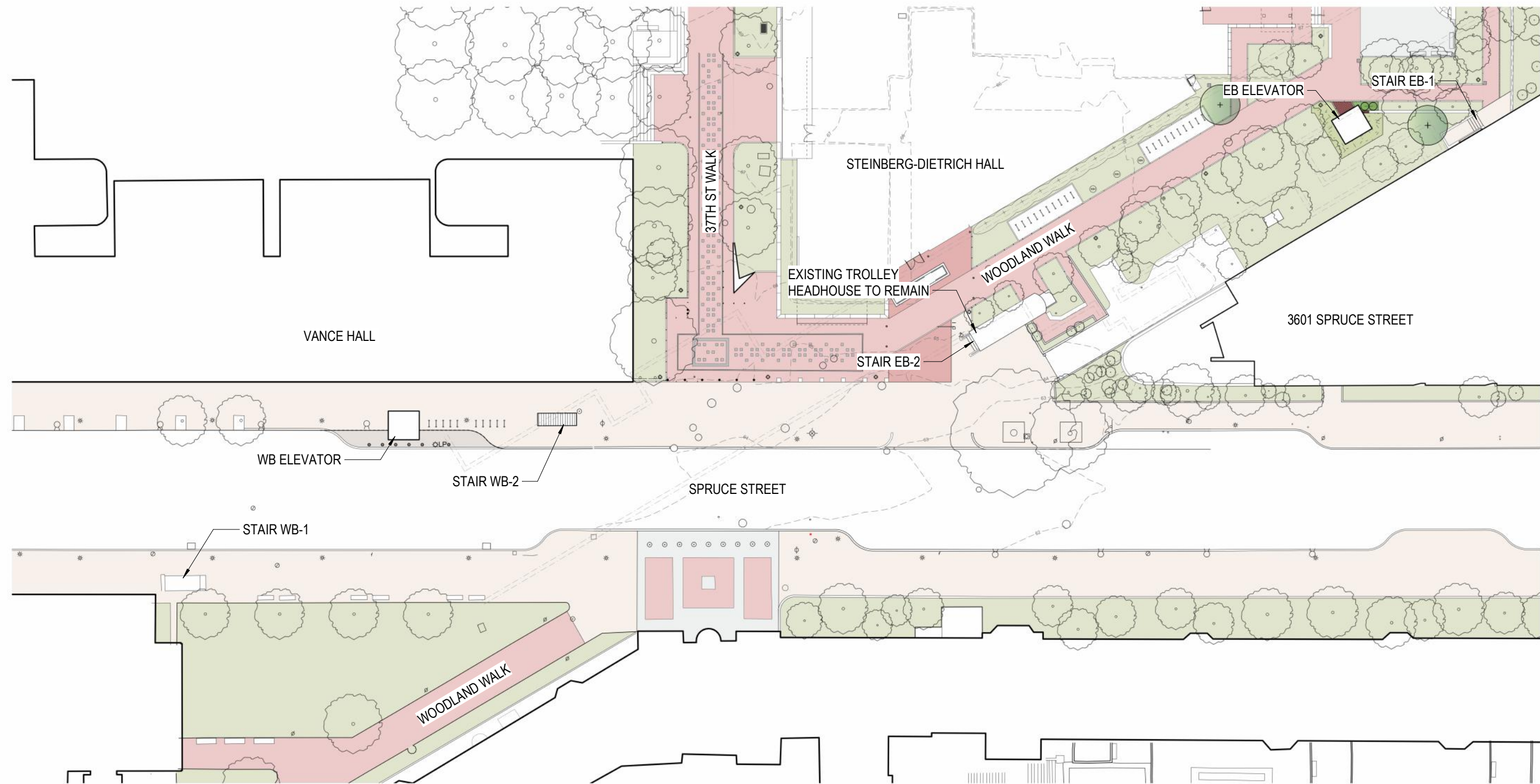


03/12/25



SEPTA - 37TH STREET TROLLEY STATION
 AREA MAP





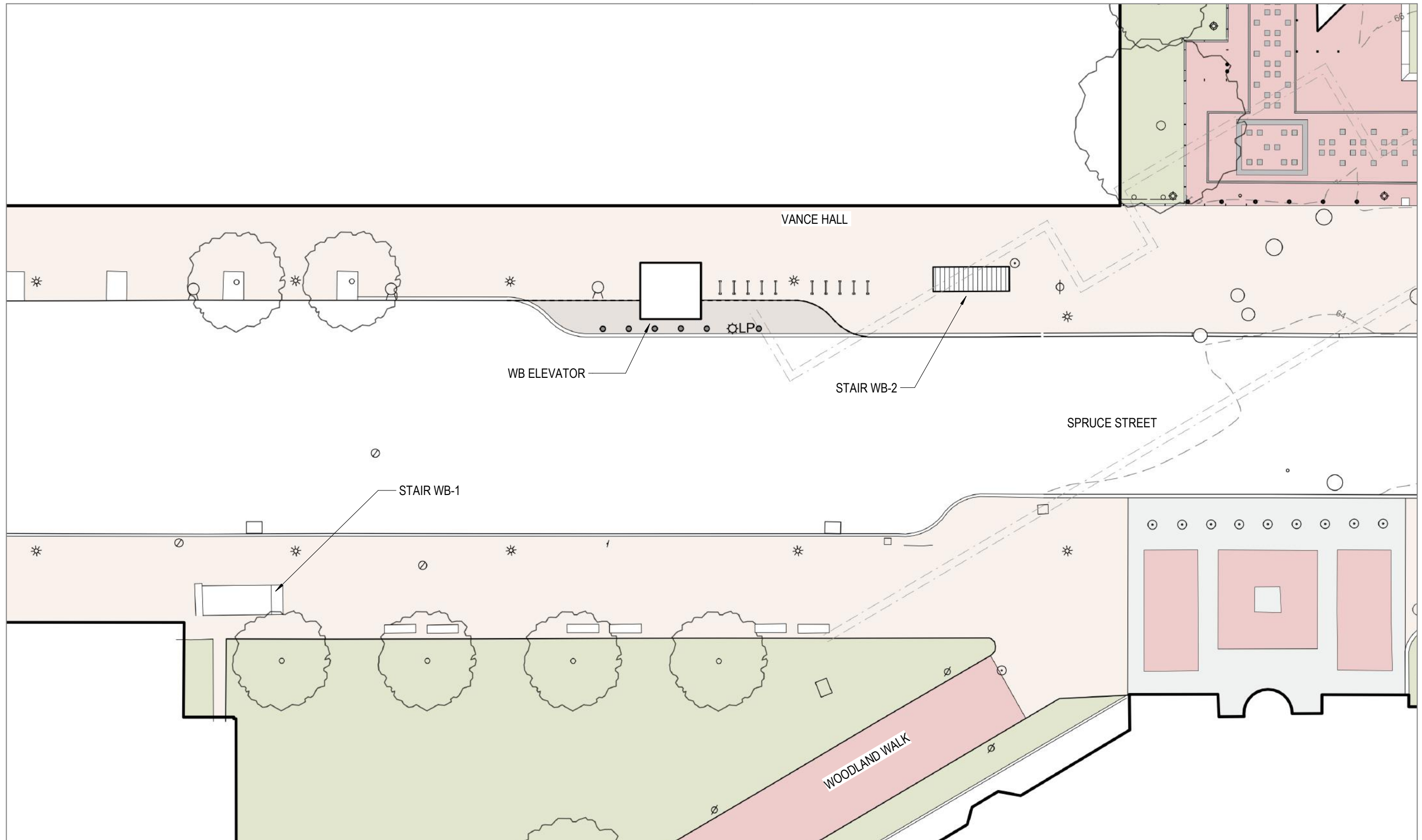
1" = 40'

03/12/25



SEPTA - 37TH STREET TROLLEY STATION
 RENDERED SITE PLAN





1" = 20'

03/12/25



SEPTA - 37TH STREET TROLLEY STATION
ENLARGED PLAN - WESTBOUND





03/12/25



SEPTA - 37TH STREET TROLLEY STATION
PREVIOUS DESIGN - STAIR HEADHOUSE RENDERING





03/12/25



SEPTA - 37TH STREET TROLLEY STATION
WB-1 STAIR HEADHOUSE RENDERING



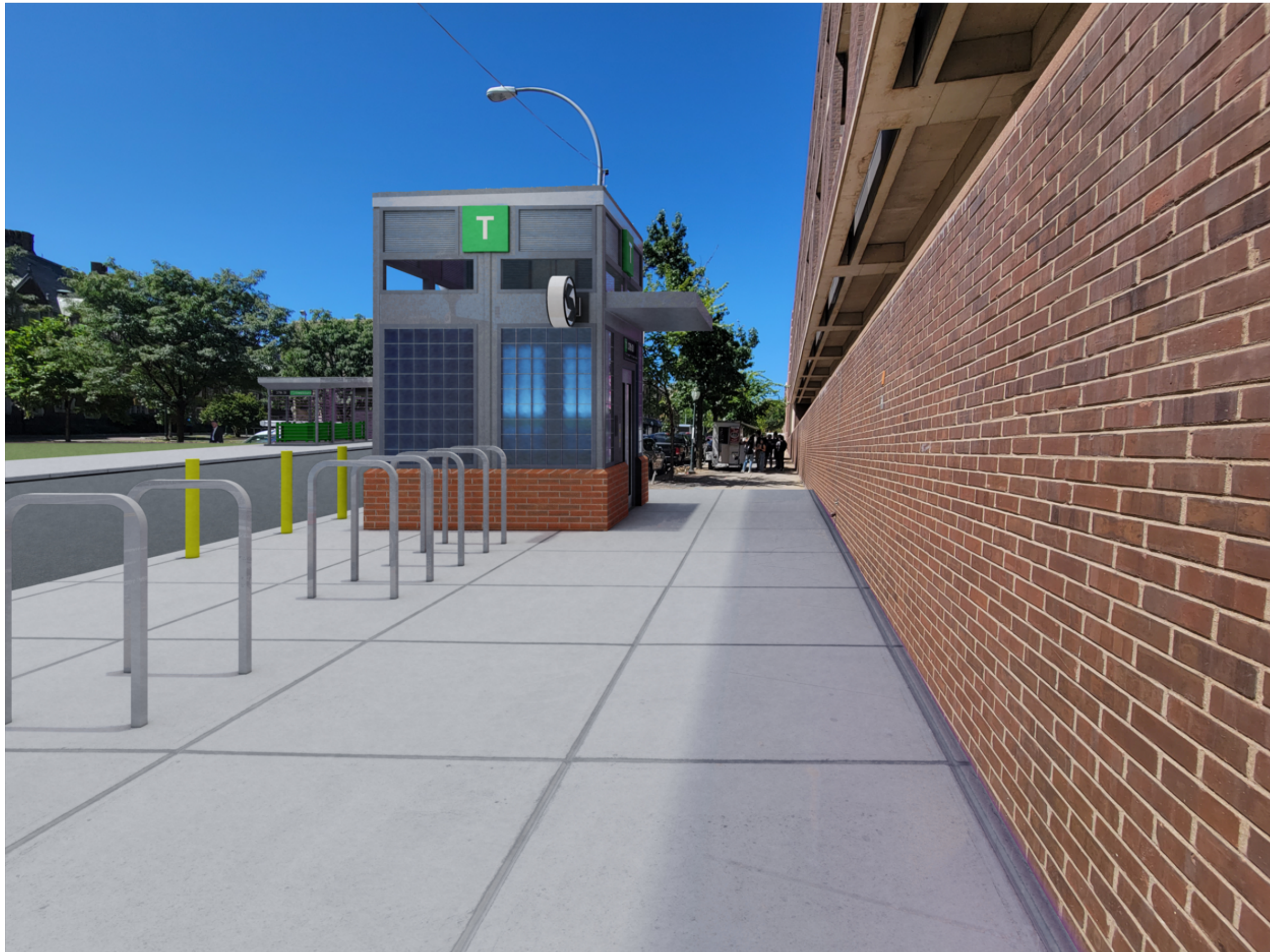


03/12/25



SEPTA - 37TH STREET TROLLEY STATION
WB-2 STAIR HEADHOUSE RENDERING



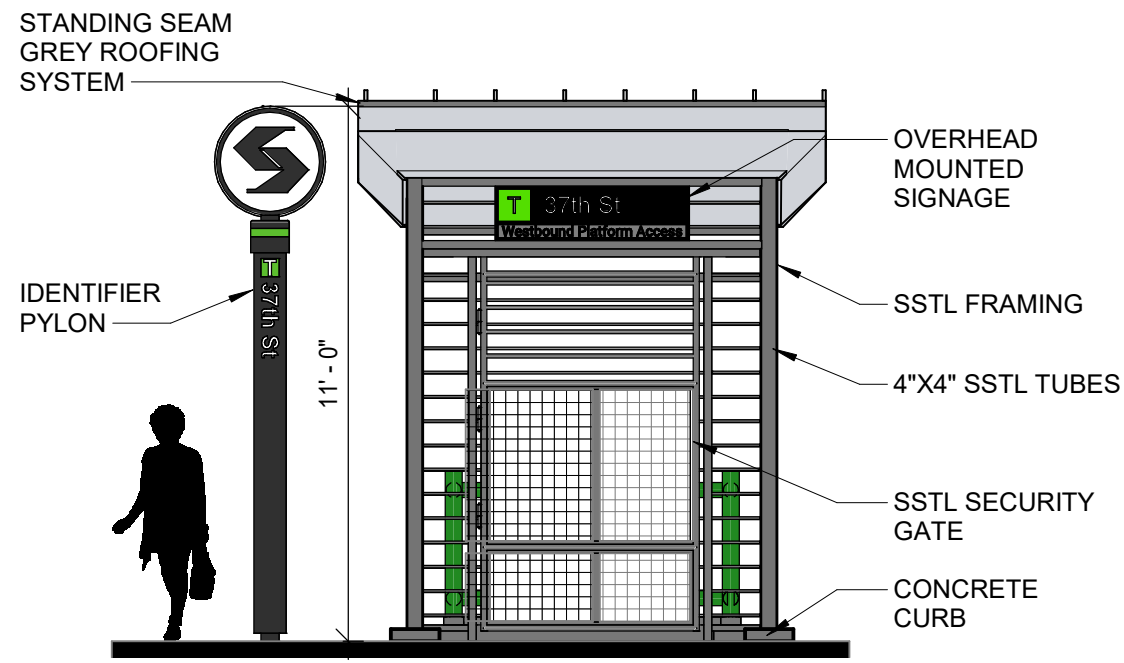


03/12/25

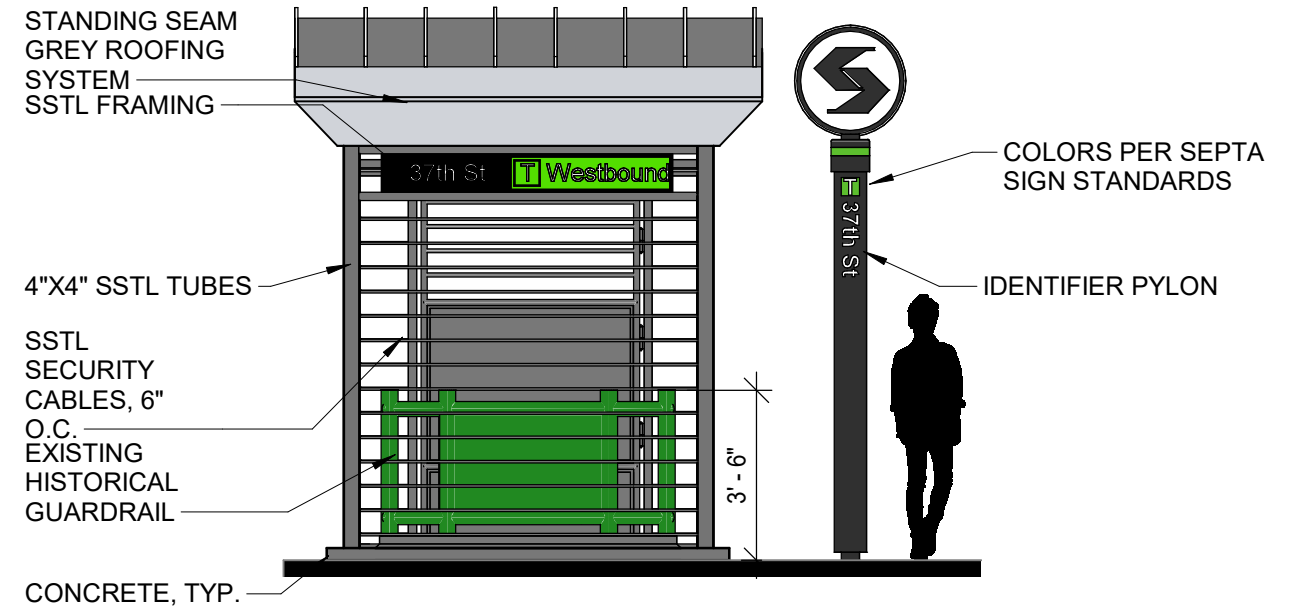


SEPTA - 37TH STREET TROLLEY STATION
WB- ELEVATOR RENDERING

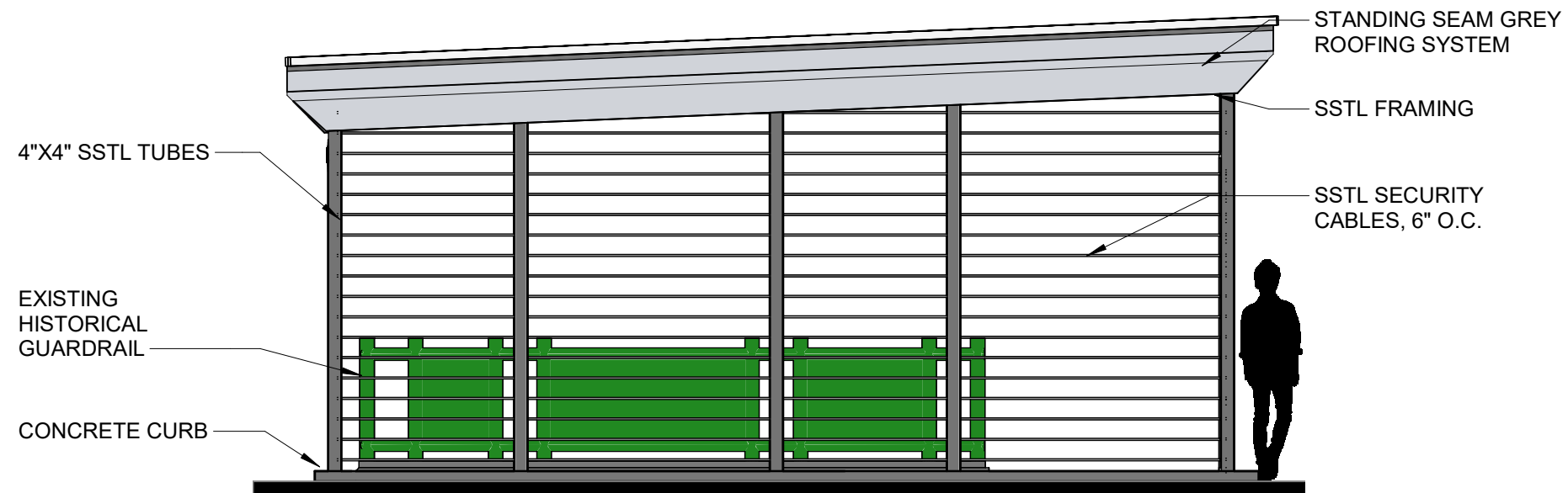




1 HEADHOUSE WB-1 FRONT ELEVATION
1/4" = 1'-0"



2 HEADHOUSE WB-1 BACK ELEVATION
1/4" = 1'-0"



3 HEADHOUSE WB-1 SIDE ELEVATION
1/4" = 1'-0"

NOTE: BOTH HEADHOUSES ARE SIMILAR DESIGN

03/12/25



SEPTA - 37TH STREET TROLLEY STATION
WESTBOUND 1 HEADHOUSE ELEVATIONS - FRONT, BACK, AND SIDE





VIEW FROM WEST GRASS COURTYARD LOOKING NORTH AT WB-1 STAIRCASE



VIEW FROM EAST SPRUCE ST LOOKING WEST AT WB-1 STAIRCASE



VIEW FROM EAST GRASS COURTYARD LOOKING WEST AT WB-1 STAIRCASE AND SPRUCE ST



VIEW FROM WEST SPRUCE ST LOOKING AT WB-2 STAIRCASE



VIEW FROM EAST SPRUCE ST LOOKING WEST AT LOCATION OF PROPOSED WB ELEVATOR



VIEW FROM WEST SPRUCE ST LOOKING EAST AT LOCATION OF PROPOSED WB ELEVATOR