

# 1702 Walnut Street Abercrombie & Fitch

Installation of Two New Exterior Signs



# Project Cover Letter

Eric Madsen  
Permit Philly LLC  
License No: 051233  
docs@permitphilly.com  
267.744.4200

February 5, 2025

Philadelphia Art Commission  
1515 Arch St., 13th Floor  
Philadelphia, PA 19102

**RE:** Signage for New Abercrombie & Fitch located at 1702 Walnut Street

To the Sign Committee of the Art Commission:

Please find attached plans, photos of the existing site conditions, and a rendering in application for two exterior signs for a new Abercrombie & Fitch at 1702 Walnut Street, Philadelphia, PA 19103. Lettering for both signs will read, "Abercrombie & Fitch."

The proposed signage consists of:

- **Face Lit Channel Letters (A in attached plans)** with aluminum returns and backing and push-through acrylic faces mounted flush to the exterior wall above the front door of the store.
  - Letters will be 12" tall with a combined width of 10' 6 1/4", for a total of 10.52 sq. ft. of sign area.
  - Letters will be mounted such that the bottom of the lettering will be aligned to a height of 12' 9" above grade.
  - Letters will be illuminated by 3500K mini-LED units powered by a 120-277-volt LED driver contained in a power supply box enclosure.
  - Exterior surfaces of letters will be painted signal white with a satin finish. Interior surfaces will be painted high gloss white.
- **Non-Illuminated Blade Sign (B in attached plans)** with aluminum pipe, panel and mounting plate and acrylic lettering projecting from the facade on the right-hand side of the storefront.
  - The sign panel is 2' tall and 3' wide for a total of 6 sq. ft. of sign area. The aluminum pipe projects another 3" to the left and 4" to the right of the sign panel, and the mounting plate projects another 3" in height.
  - Sign will be mounted such that the bottom of the sign panel will be aligned to a height of 10' above grade.
  - Aluminum pipe, panel and mounting plate will all be painted black with a satin finish. Lettering will be painted signal white with a satin finish.

**The Commission's Decision and all communication should come to me, Eric Madsen, at the email and phone number above.**

Thank you,



Eric Madsen  
Owner, Permit Philly LLC

# Site Plan



# Key Plan



Site and  
Key  
Plans



# Facade





View  
Right





View Left





# Across the Street



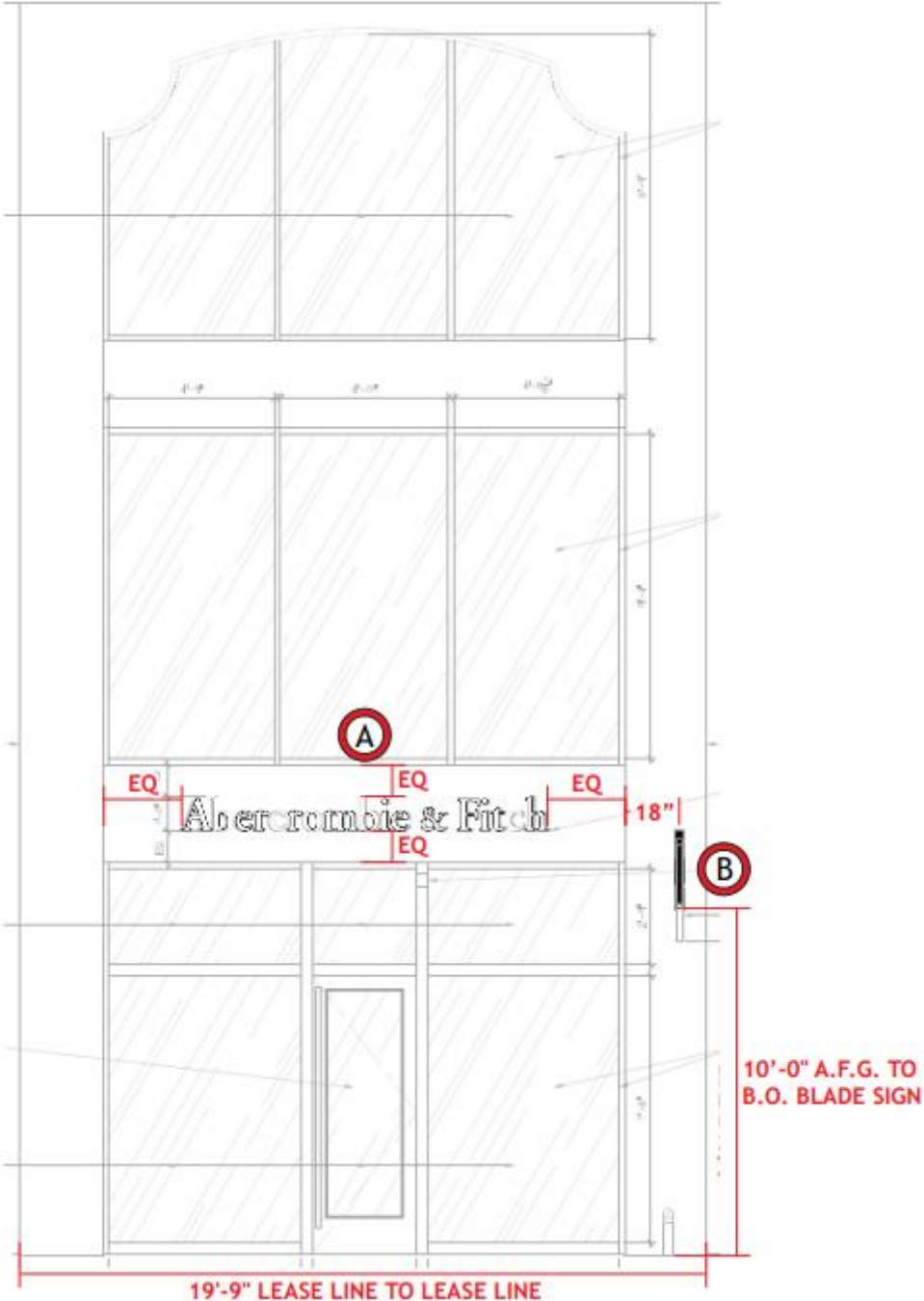


# Proposed Front Elevation Rendering





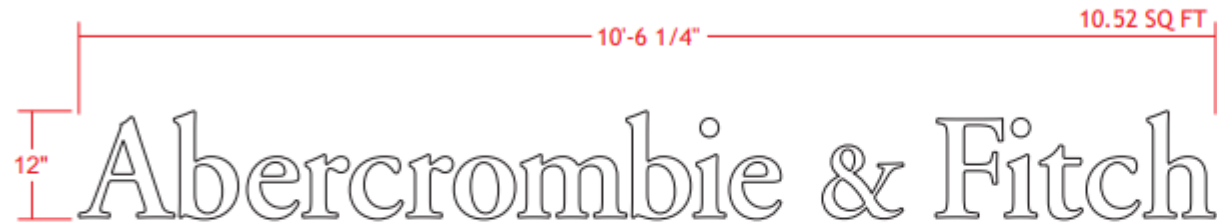
# Proposed Front Elevation Detail





# Sign A Detail

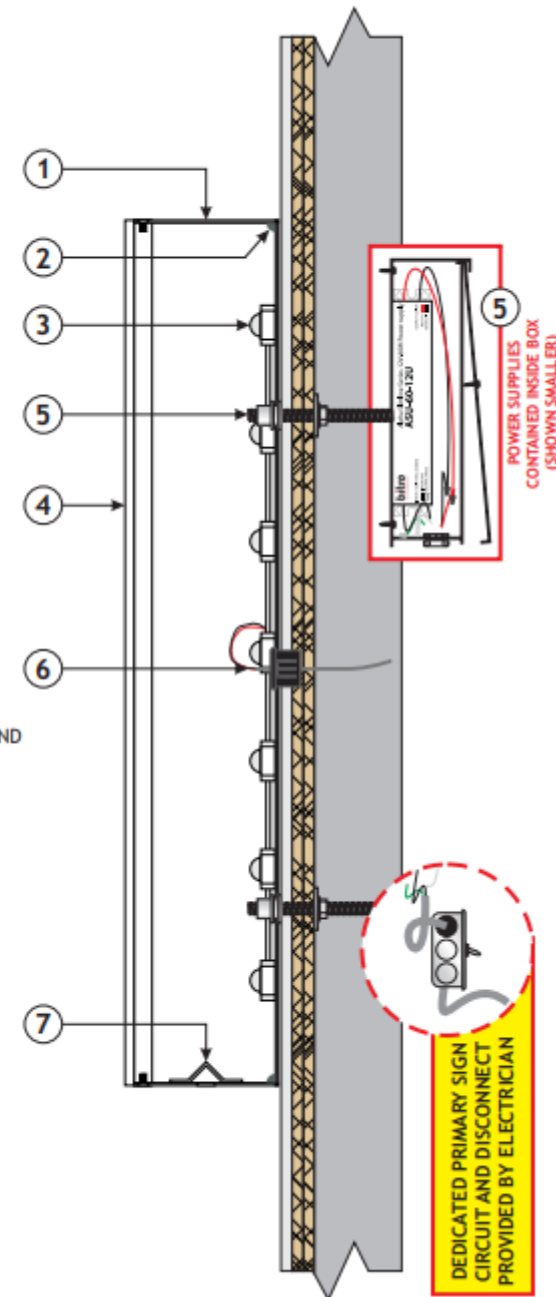
## A FACE-LIT CHANNEL LETTERS - ELEVATION Scale: 3/4" = 1' - 0"



### ● SIGN - DETAILS

- 1 2" DEEP, ALUMINUM RETURNS WELDED TO ALUMINUM BACKS. EXTERIOR SURFACES PAINTED TO MATCH RAL-9003 SIGNAL WHITE, SATIN FINISH. INTERIOR SURFACES PAINTED HIGH GLOSS WHITE.
- 2 ALUMINUM RETURNS AND BACKS FULLY CAULKED TO ELIMINATE LIGHT LEAKS.
- 3 PRINCIPAL QM MINI 3500K LED UNITS TO ILLUMINATE LETTERS.
- 4 3/8" THICK, 2447 REVERSE PUSH-THRU ACRYLIC FACE (1/8" EXPOSED) SECURED TO LETTER RETURNS WITH 2-56 X 5/16" COUNTERSUNK SCREWS. SCREW HEADS PAINTED TO MATCH RETURNS.
- 5 LETTERS MOUNT FLUSH TO SURFACE WITH 10-24 ALL THREAD AND FASTENED WITH RIV NUTS AND NUTS INSIDE LETTER AND WASHER WITH NUT BEHIND WALL.
- 6 LOW VOLTAGE PASS-THRU TO BITRO ASU-60-12U LED DRIVER (120-277 VOLT) CONTAINED IN PAIGE 980054C SNAP 2 ENCLOSURE.
- 7 DRAIN HOLE WITH LIGHT TENT AT BOTTOM OF LETTER.

## ● FACE-LIT CHANNEL LETTERS - SECTION Scale: 1" = 0' - 2"





# Sign B Detail

## B BLADE SIGN NON-ILLUM. - ELEVATION Scale: 1 1/2" = 1' - 0"



## ● SIGN - DETAILS

- ① 1 7/8" DIAMETER ALUMINUM PIPE PAINTED TO MATCH RAL-9005 BLACK, SATIN FINISH. ALUMINUM PIPE IS WELDED TO ALUMINUM PANEL.
- ② 1/8" THICK ALUMINUM PANEL ROLLED AT TOP TO MOUNT FLUSH TO 1 7/8" DIAMETER PIPE. FASTENED TO PIPE WITH COUNTERSINK SCREWS. ALUMINUM PANEL AND COUNTERSINK SCREWS ARE PAINTED TO MATCH RAL-9005 BLACK, SATIN FINISH.
- ③ 3/8" ALUMINUM MOUNTING PLATE, PAINTED TO MATCH RAL-9005 BLACK, SATIN FINISH. MOUNTING PLATE FLUSH TO WALL WITH 3/8" WEDGE ANCHORS.
- ④ PVC PIPE CAP, PAINTED TO MATCH RAL-9005 BLACK, SATIN FINISH.
- ⑤ 3/8" ACRYLIC LETTERS PAINTED TO MATCH RAL - 9003 SIGNAL WHITE, SATIN FINISH AND MOUNTED TO FACES OF ALUMINUM TUBES WITH COUNTERSINK SCREWS.
- ⑥ DOUBLE SET SCREW SPACERS INSTALLED ALONG WORDING FOR ADDITIONAL STABILITY. SPACERS PAINTED TO MATCH RAL-9005 BLACK, SATIN FINISH.

FACADE WILL BE PROTECTED FROM PERMANENT DAMAGE

## ● BLADE SIGN NON-ILLUM. - SECTION Scale: 1" = 0' - 2"

