

January 29, 2025

Alex Smith  
Philadelphia Art Commission  
City of Philadelphia  
1515 Arch Street  
Philadelphia PA 19102

RE: SEPTA South Broad ADA Improvements – Chinatown Station – Revised per 7/10/2024 Comments

Dear Alex,

Jacobs has been contracted by SEPTA to provide architectural design and engineering services at the Chinatown station on South Broad Street Spur to improve ADA accessibility. On behalf of SEPTA, Jacobs respectfully requests the Art Commission's Main Review and supplemental Signage Review of the revised submission for SEPTA's Chinatown ADA Improvements Project. This updated submission addresses comments provided by the Art Commission at the previous July 10, 2024, meeting and includes the following station and location:

- **Chinatown Station**  
800 Race Street,  
Philadelphia, PA

See previous cover letter of package dated 6/26/2024 for an overview of the project including ADA interventions and materials that remain mostly unchanged. The following paragraphs describe updates to the design since the previous submission.

### **Night Rendering Added**

As requested during the previous meeting, Jacobs has provided a night rendering of the station. See sheet A-17. Now visible are pedestrian lights poles added, which continue the placemaking created in other parts of the Chinatown District.

### **Chinatown District Light Poles Added**

Reviews and meetings with the Philadelphia Chinatown Development Corporation (PCDC) have occurred in parallel with those of the Arts Commission. PCDC requested that the same pedestrian light pole used at other parts of the Chinatown District also be integrated at the Chinatown Station. This is in order to provide safety and lighting at night, while continuing the cultural identity and Chinatown district. See sheet A-27 for a photo of installed light poles at nearby Chinatown streets. See A-15 for a bird's eye view rendering of the plaza, including the new poles.

### **Increased Place-making Plantings and Sun Shading on Plaza**

Several additional cultural elements were also integrated throughout the site, including indigenous trees to Chinese gardens. See sheet A-27 for additional information as well as increased locations as shown on proposed site plans and renderings.

## **Paved Plaza Reduced, Planting Areas Increased, Benches Integrated**

The planting areas increased and the paved areas reduced due to changes of planter wall geometry and through use of metal raised planters. Benches were also integrated on the raised planter bed walls to provide seating in the new plaza area. See sheet A-27 for an example of the metal/wood benches currently proposed. Red painted metal to match the light poles will replace the light green shown.

The plaza paving material has been revised. Conventional sidewalk slab construction will be provided over the existing paver bed slab after the existing pavers are removed. Planter beds were raised to avoid unnecessary site disturbance of the existing paving bed slab.

## **Stair/Elevator Landings at Platform Level Enlarged**

The depth at the bottom landing of both the West and East stairs was increased, as it is shared with the Elevator landing. This Elevator Machine Room spaces underneath the stairs were reduced.

## **Fare Gates Revised to Latest SEPTA standard.**

The fare gate layout was revised to increase fare gate machines and overall width. Additional egress gates were provided and moved to the main entrance side of the building. The new fare gate type reflects the latest SEPTA standard to improve security.

## **Signage Shown Throughout**

Exterior and interior signage has been developed and shown throughout the renderings in accordance with SEPTA's latest wayfinding signage standards but also adapted to the particular flow of passengers to and through the station. Two freestanding pylons plus a neighborhood map sign will be provided within the plaza. An illuminated dimensional lettering sign including Chinese characters has been wall-mounted above the main entrance. Additional wall mounted illuminated SEPTA signage identifies the station building corner along 8<sup>th</sup> street.

## **Ceiling Added to Platform Level & Finish Revised on Street Level**

The interior ceiling was updated to show a satin anodized/stainless steel finish. This same panel system was carried down to the platform level and is provided under the new floor structure supporting the street level of the new headhouse.

Please feel free to contact me with any questions about the project in advance to the next meeting on February 12<sup>th</sup> (and the supplemental Sign and Streetery Committee meeting on February 26<sup>th</sup>.) We look forward to discussing the project with the Philadelphia Art Commission.

Sincerely,

**Brian J. Fitzhenry, PE**

*Senior Project Manager – Rail Buildings & Structures*

1-215-514-8957

Brian.Fitzhenry@jacobs.com

**Jacobs**

Two Commerce Square

2001 Market St, Suite 900  
Philadelphia, PA 19103

CC: John McElwee, SEPTA  
Sean McMahon, PMP, SEPTA  
Victoria Lupica, SEPTA  
Julia Guerrero, Civic-Centered  
Matt Morong, RA, Jacobs  
Fred Kaulbach, RA, Jacobs



---

**CHINATOWN STATION  
ADA IMPROVEMENTS**

PHILADELPHIA ART COMMISSION PRESENTATION

---

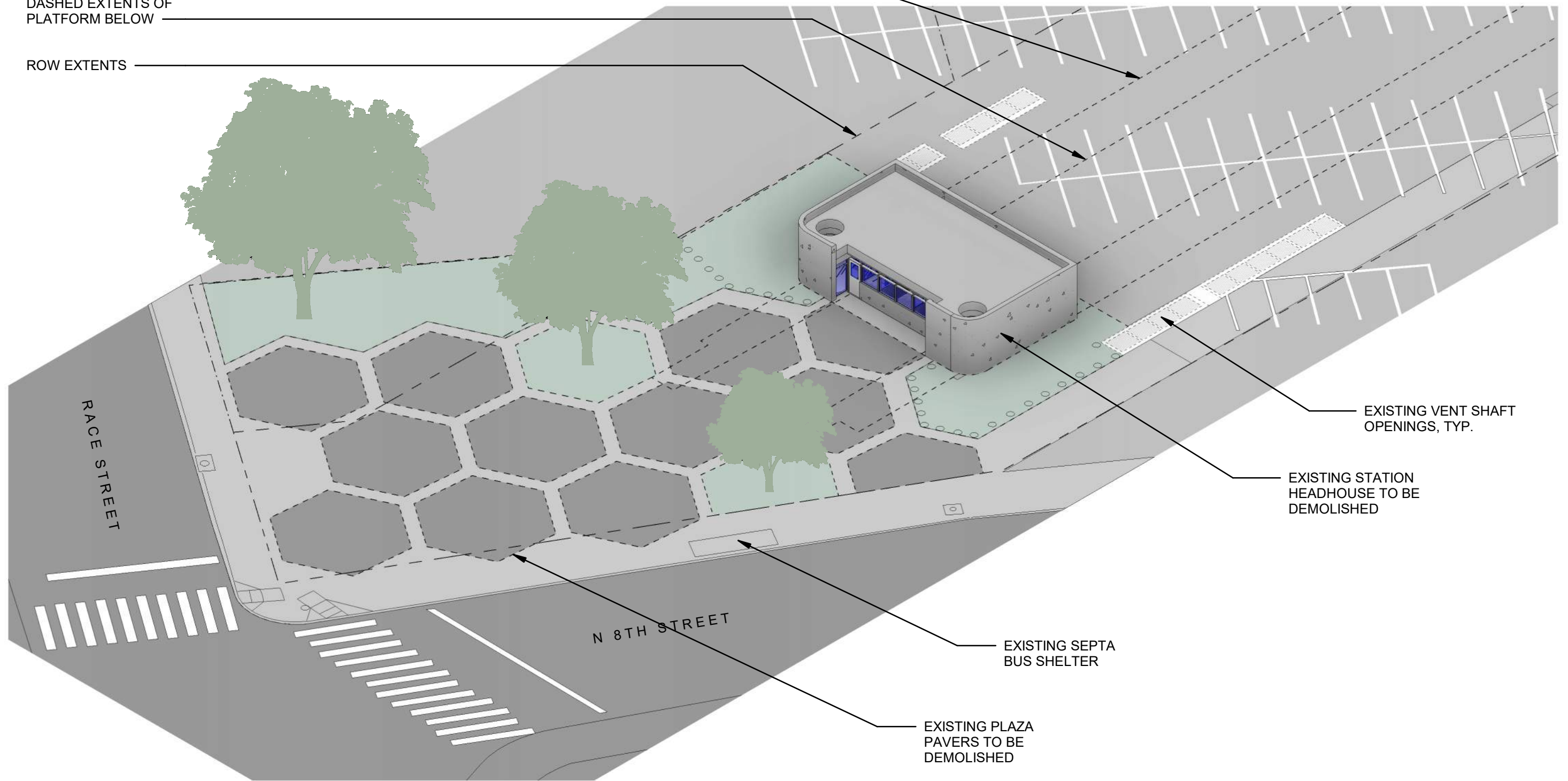
**Jacobs**



DASHED EXTENTS OF STATION BELOW

DASHED EXTENTS OF PLATFORM BELOW

ROW EXTENTS



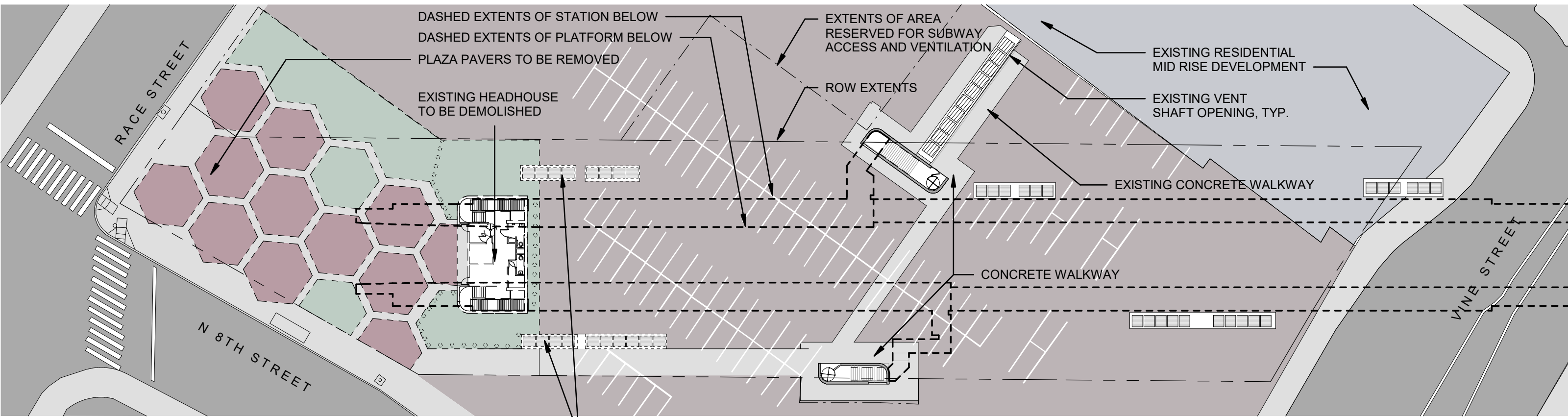
1 STREET AXON - EXISTING STATION  
 A 01 SCALE:

STREET LEVEL EXISTING CONDITIONS AXONOMETRIC

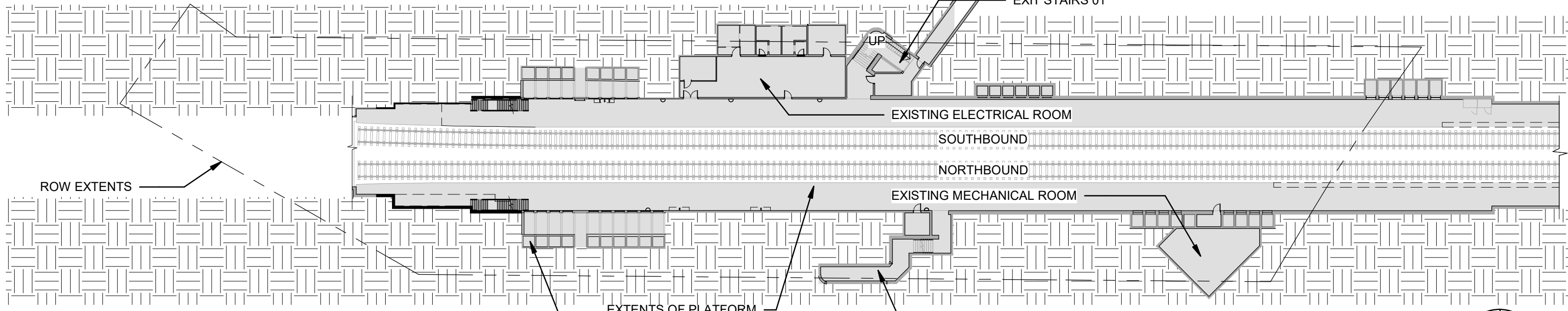
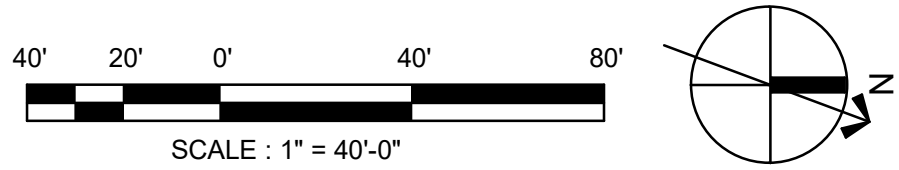
CHINATOWN STATION

JANUARY 29, 2025

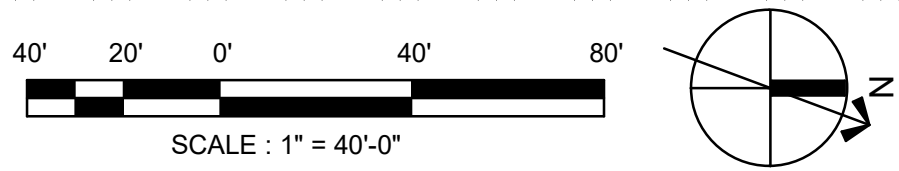
A 01



**1** EXISTING OVERALL STREET LEVEL PLAN  
 A 02 SCALE: 1" = 40'-0"



**2** EXISTING OVERALL PLATFORM LEVEL PLAN  
 A 02 SCALE: 1" = 40'-0"



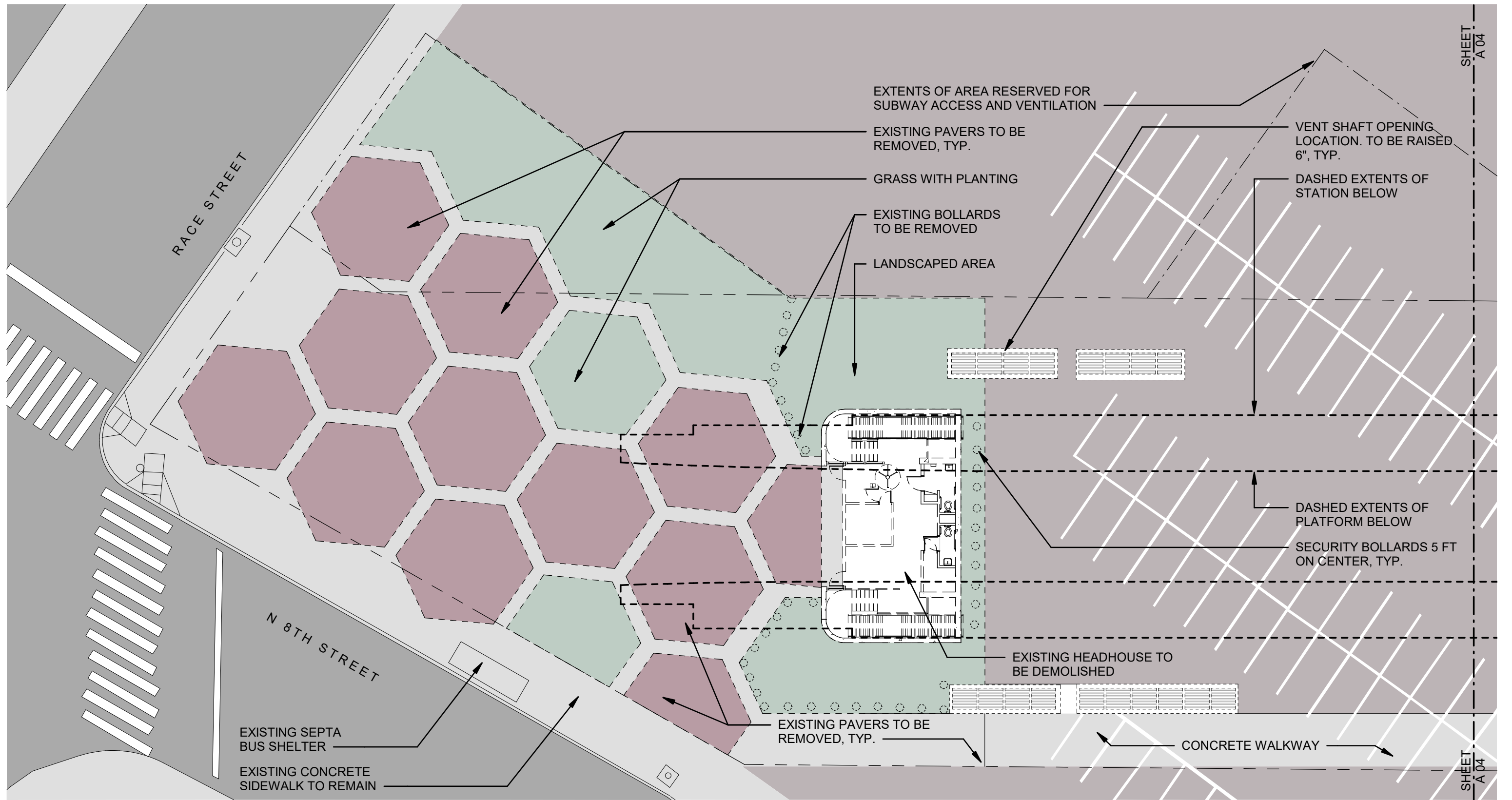
**EXISTING OVERALL PLANS**

**CHINATOWN STATION**

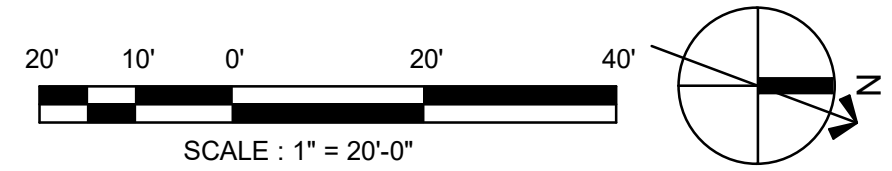
JANUARY 29, 2025

A 02





1 EXISTING STREET LEVEL PLAN - 01  
 A 03 SCALE: 1" = 20'-0"



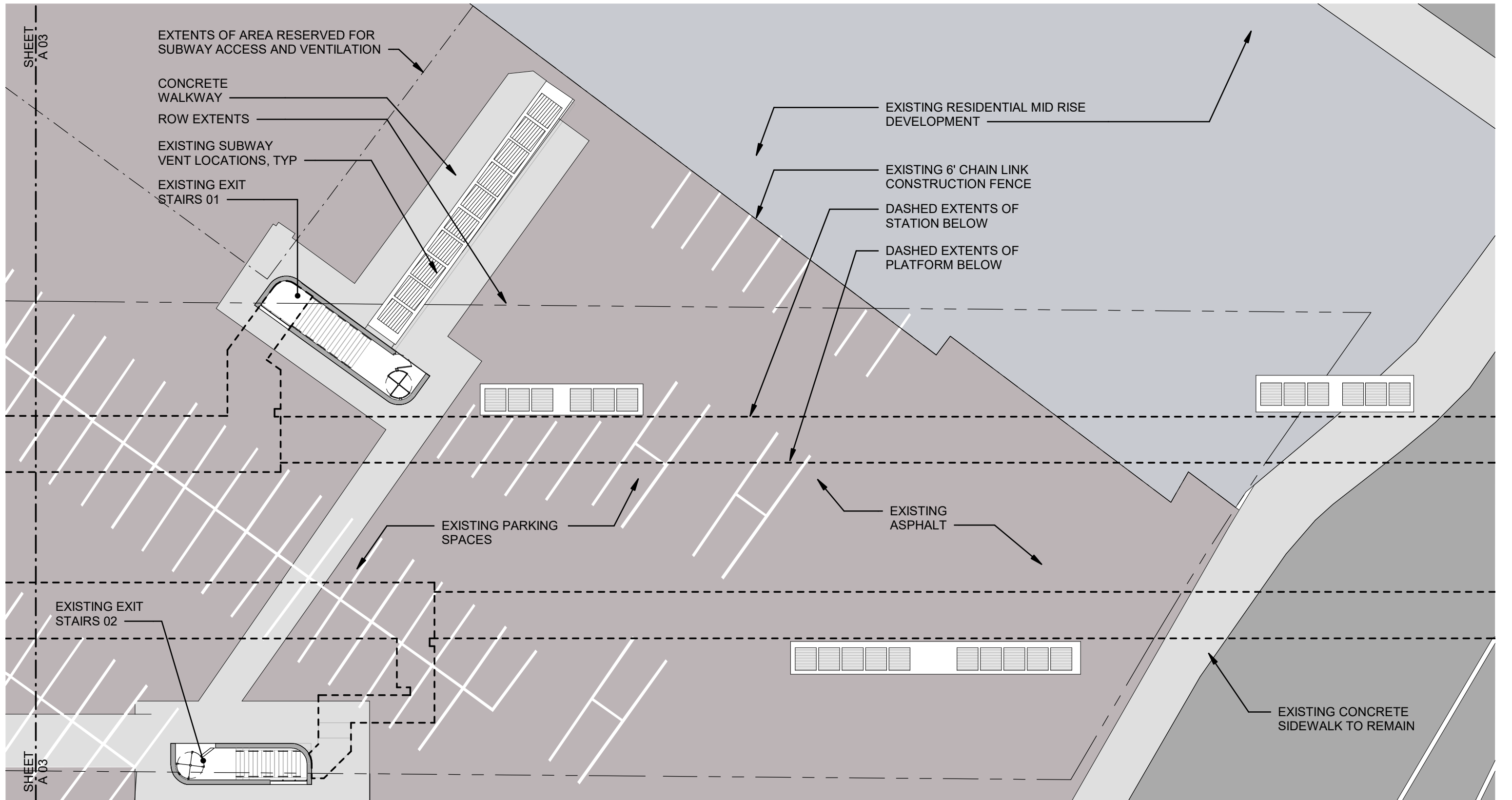
EXISTING STREET LEVEL PLAN - SECTOR 01

CHINATOWN STATION

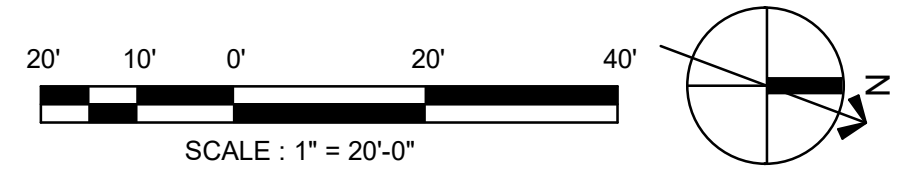
JANUARY 29, 2025

A 03





1 EXISTING STREET LEVEL PLAN - 02  
 A 04 SCALE: 1" = 20'-0"

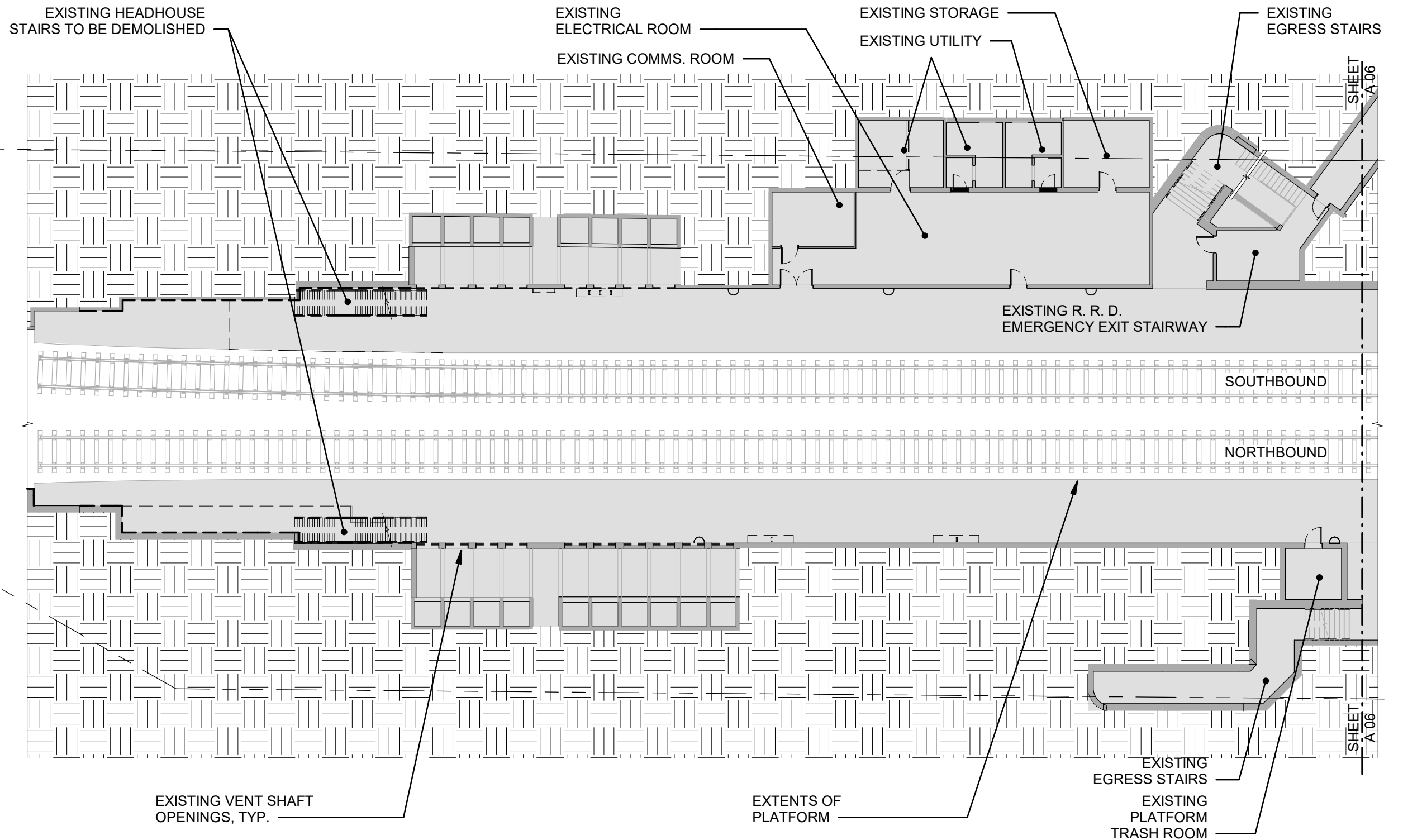


EXISTING STREET LEVEL PLAN - SECTOR 02

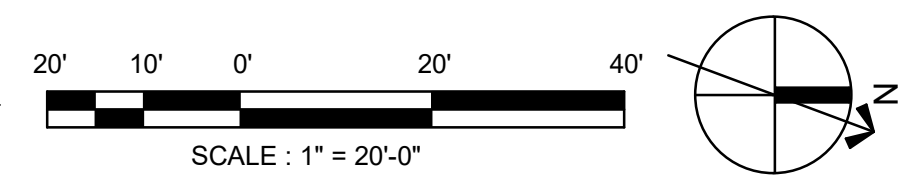
CHINATOWN STATION

JANUARY 29, 2025

A 04



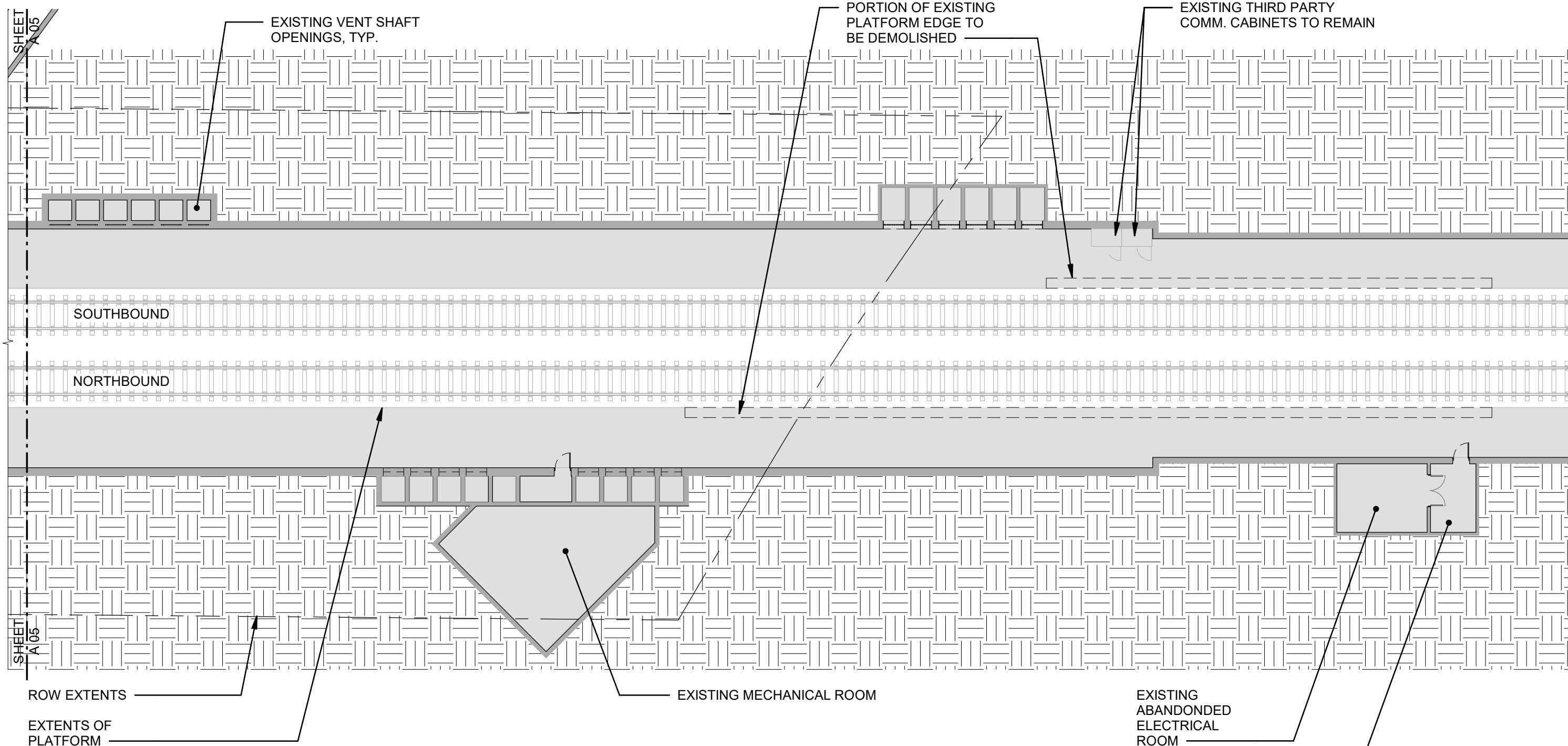
1 EXISTING PLATFORM LEVEL PLAN 01  
 A 05 SCALE: 1" = 20'-0"



EXISTING PLATFORM PLAN - SECTOR 01

CHINATOWN STATION  
 JANUARY 29, 2025  
 A 05





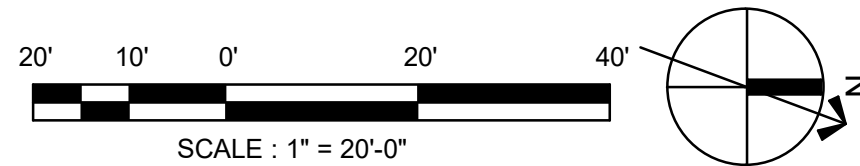
1 EXISTING PLATFORM LEVEL PLAN 02  
 A 06 SCALE: 1" = 20'-0"

EXISTING PLATFORM PLAN - SECTOR 02

CHINATOWN STATION

JANUARY 29, 2025

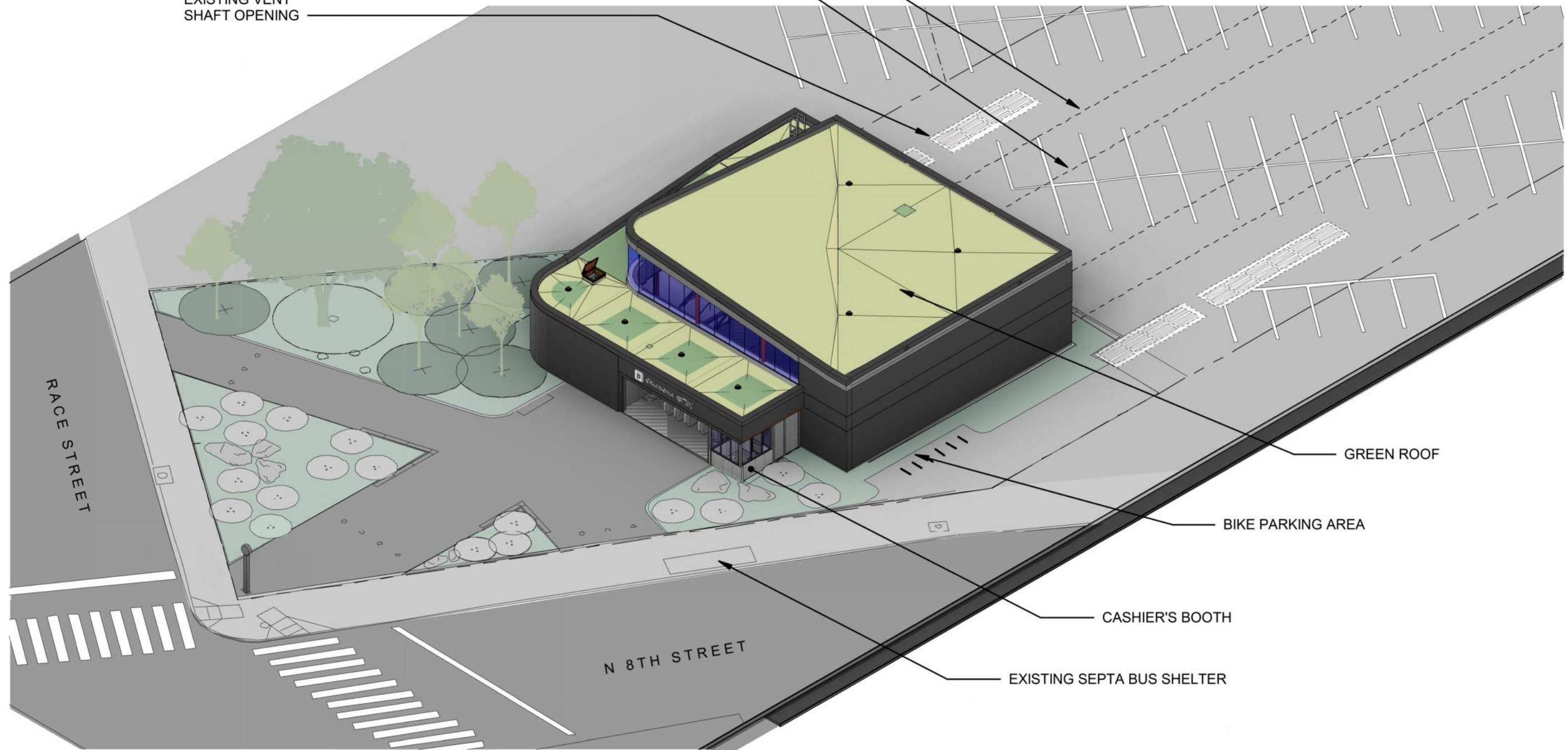
A 06



DASHED EXTENTS OF  
STATION BELOW

DASHED EXTENTS OF  
PLATFORM BELOW

EXISTING VENT  
SHAFT OPENING



GREEN ROOF

BIKE PARKING AREA

CASHIER'S BOOTH

EXISTING SEPTA BUS SHELTER

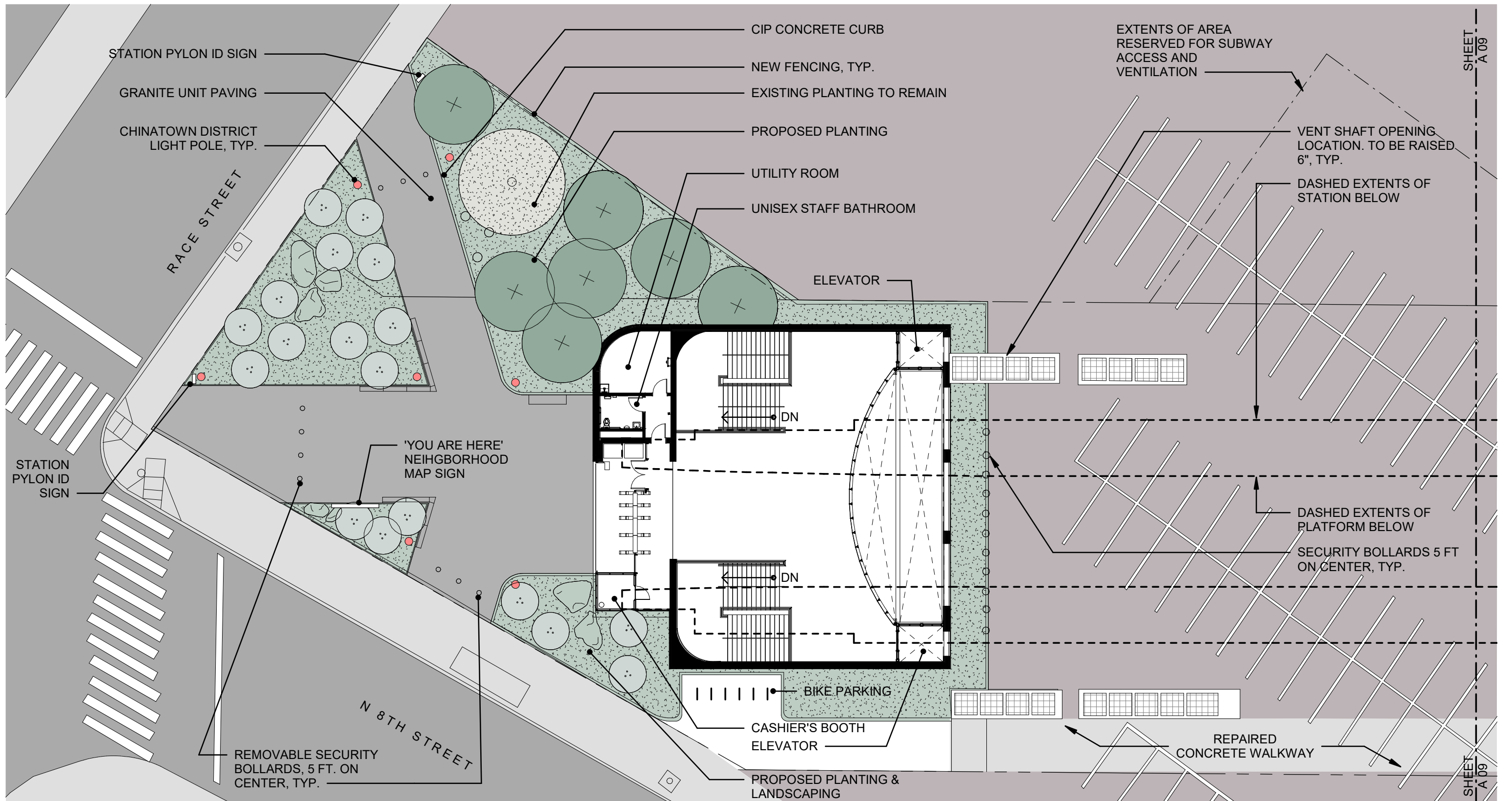
1 STREET AXON - NEW HEADHOUSE & PLAZA DESIGN  
A 07 SCALE:

STREET LEVEL NEW HEADHOUSE AXONOMETRIC

CHINATOWN STATION  
JANUARY 29, 2025  
A 07







1 PROPOSED OVERALL STREET LEVEL PLAN 01  
 A 08 SCALE: 1" = 20'-0"

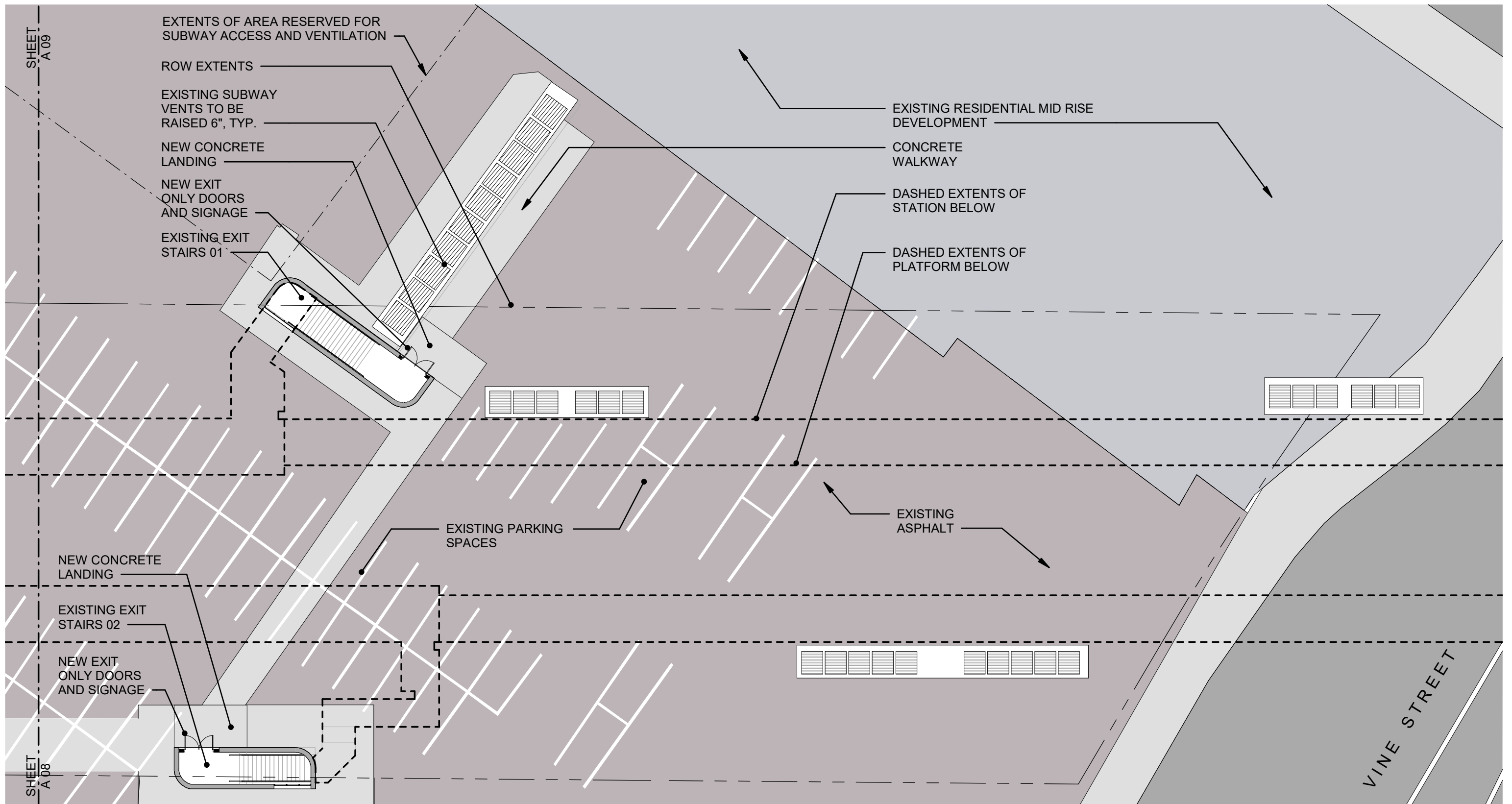
PROPOSED STREET LEVEL PLAN

CHINATOWN STATION

JANUARY 29, 2025

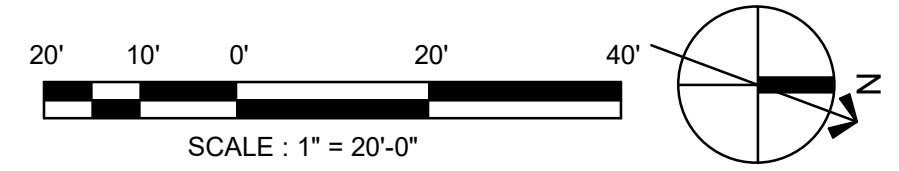
A 08

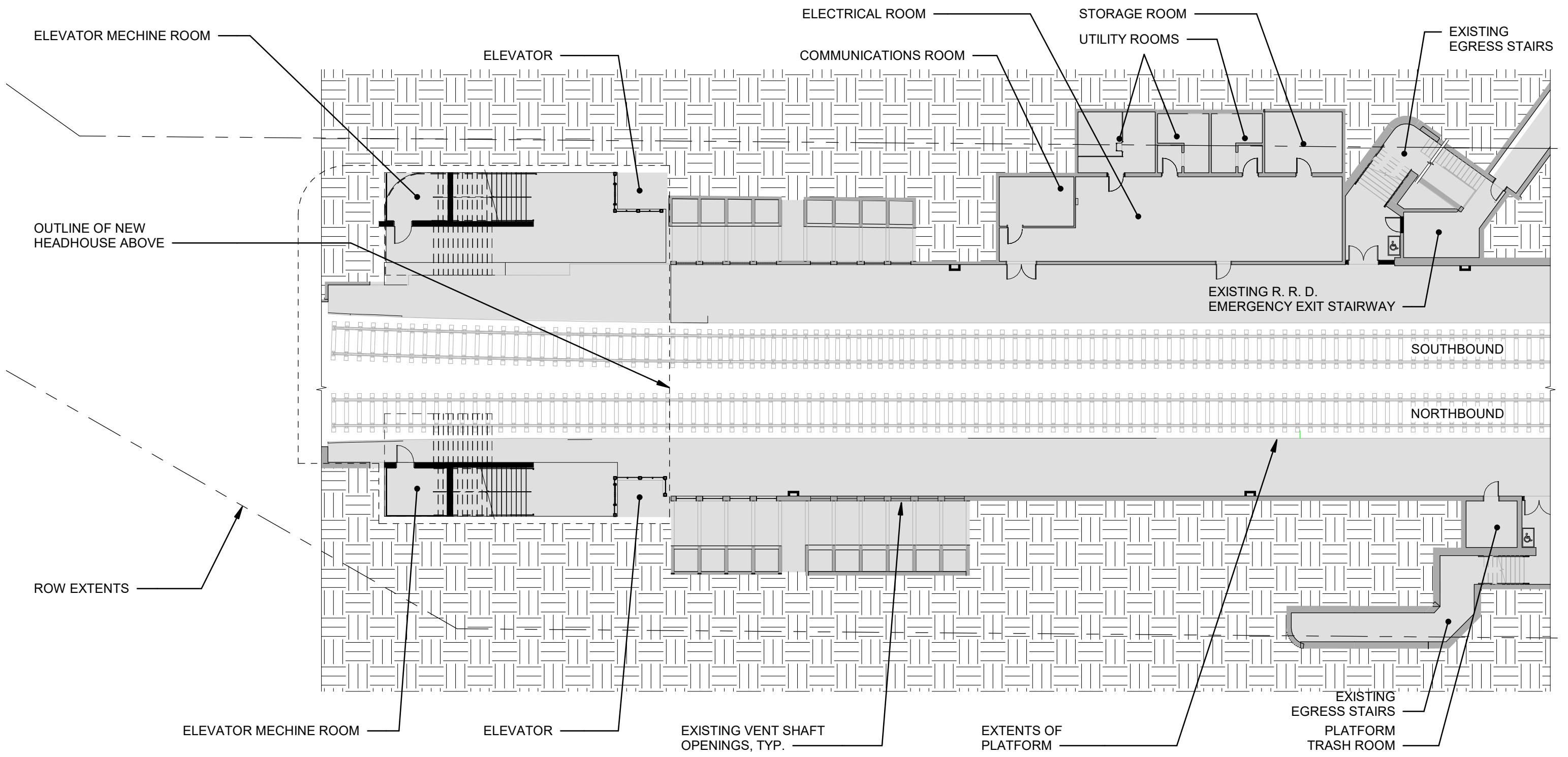




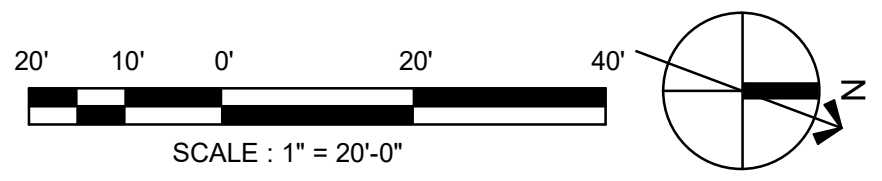
1 PROPOSED OVERALL STREET LEVEL PLAN 02  
 A 09 SCALE: 1" = 20'-0"

PROPOSED STREET LEVEL PLAN - SECTOR 02



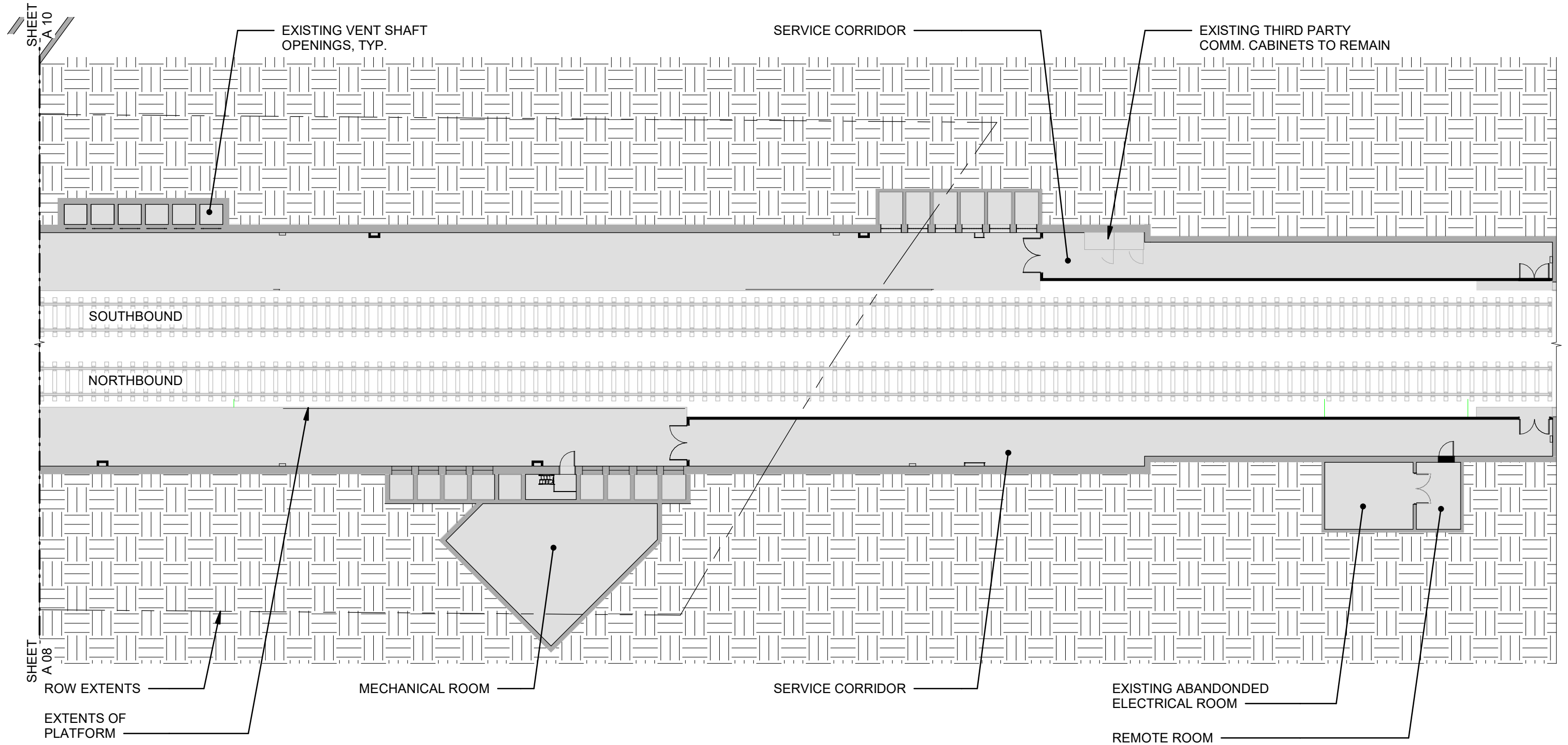


1 PROPOSED PLATFORM LEVEL PLAN 01  
 A 10 SCALE: 1" = 20'-0"

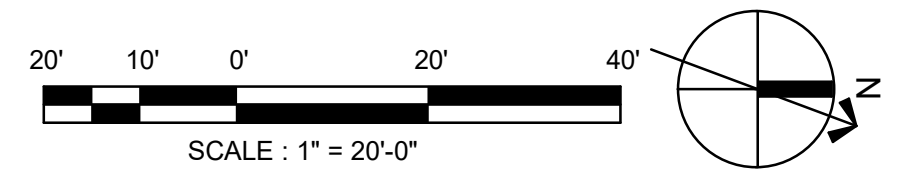


PROPOSED PLATFORM PLAN  
**CHINATOWN STATION**  
 JANUARY 29, 2025  
 A 10





1 PROPOSED PLATFORM LEVEL PLAN 02  
 A 11 SCALE: 1" = 20'-0"



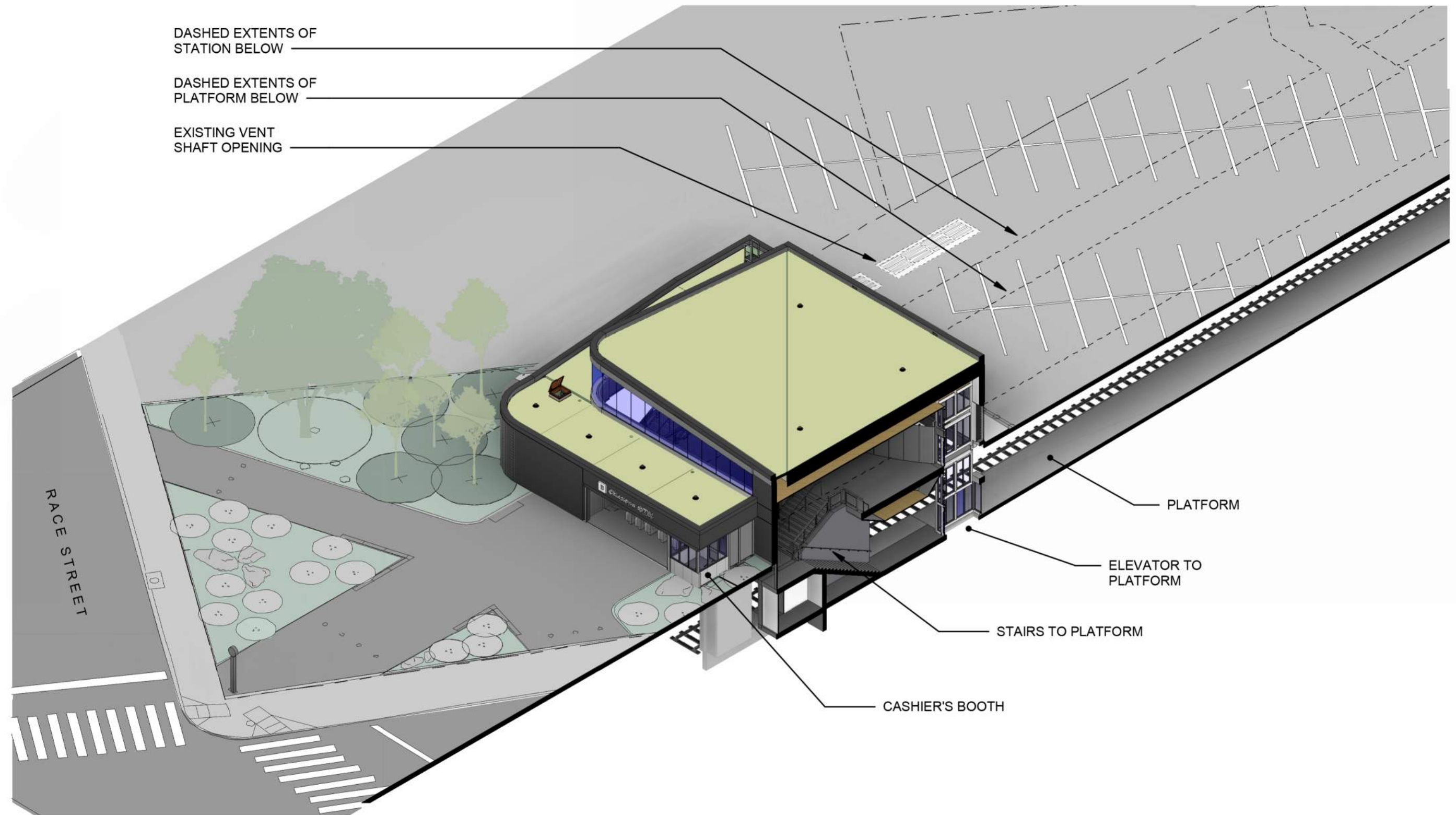
PROPOSED PLATFORM PLAN - SECTOR 02

CHINATOWN STATION

JANUARY 29, 2025

A 11





**1 STREET AXON SECTION**  
A 13

STREET LEVEL AXONOMETRIC SECTION

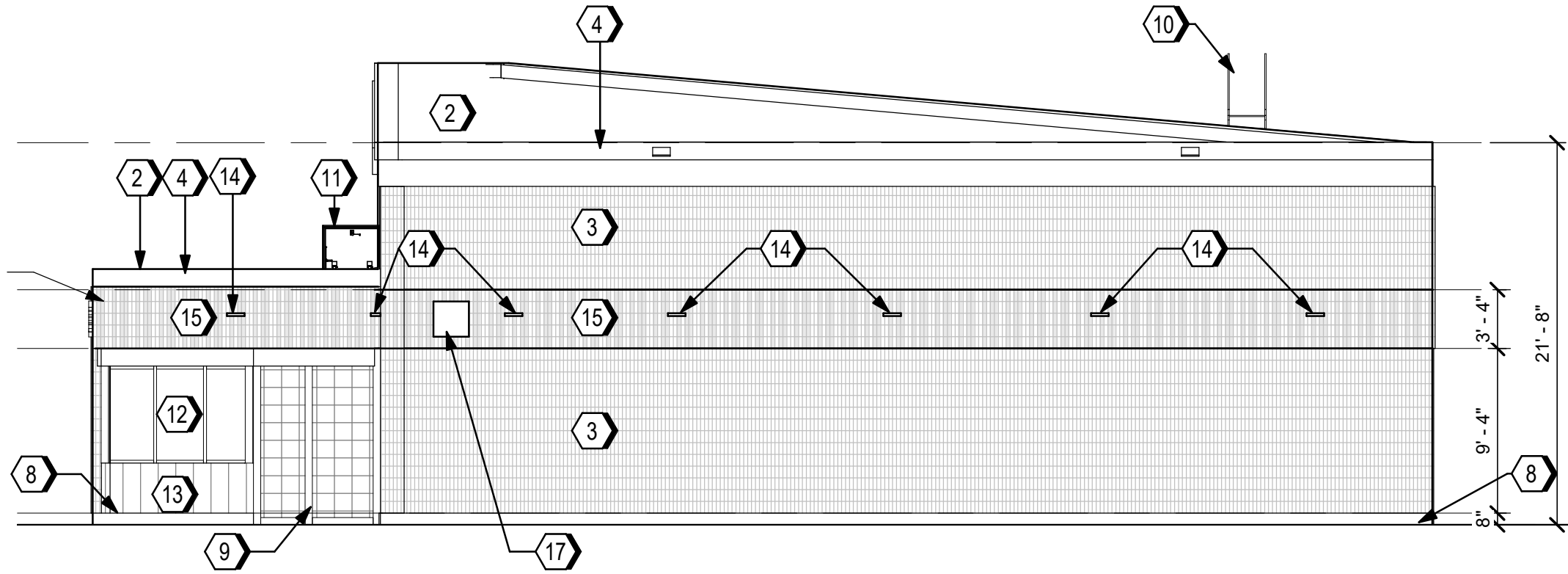
**CHINATOWN STATION**  
JANUARY 29, 2025  
A 12



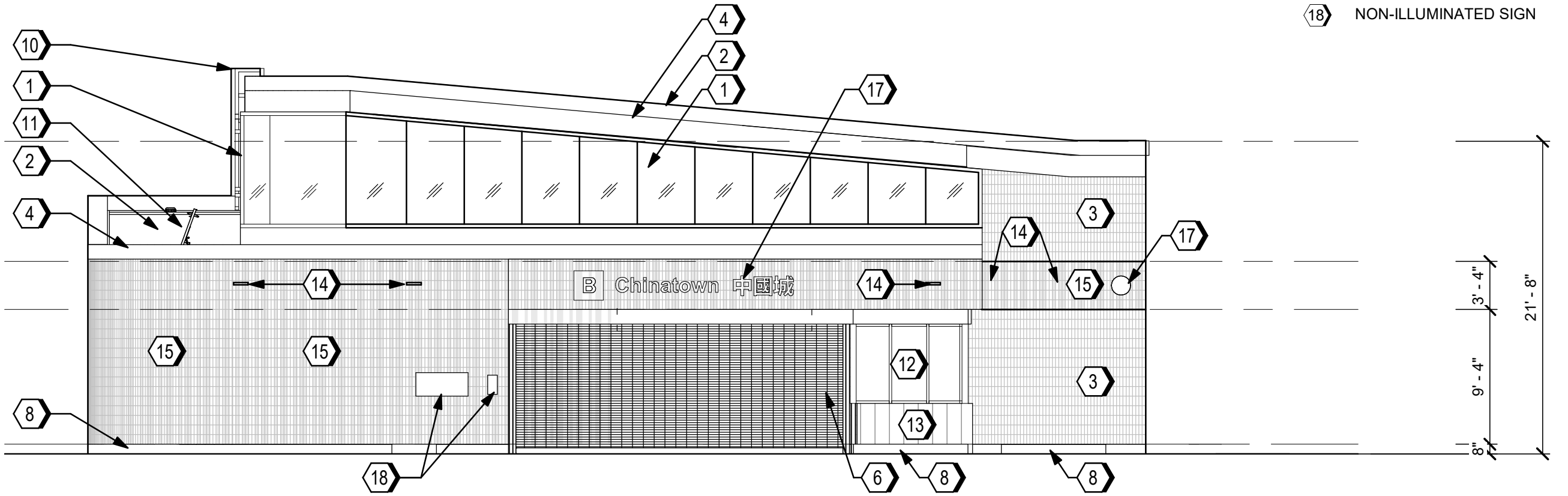
**KEYNOTES**

- ① IMPACT RESISTANT LAMINATED GLASS
- ② GREEN ROOF
- ③ FACE BRICK
- ④ METAL PANEL / COPING
- ⑤ NOT USED
- ⑥ COILING SECURITY GATE
- ⑦ SOLID GLASS BRICK
- ⑧ STONE PANELS
- ⑨ METAL MESH
- ⑩ FIXED LADDER
- ⑪ ROOF HATCH
- ⑫ LAMINATED GLASS
- ⑬ BOOTH WALL ASSEMBLY
- ⑭ EXTERIOR LIGHT
- ⑮ GLAZED BRICK WITH SAWTOOTH BRICK WYTHE
- ⑯ SCUPPER OPENING OVERFLOW ROOF DRAIN
- ⑰ ILLUMINATED SIGN
- ⑱ NON-ILLUMINATED SIGN

BRICK TO BE UNIFORM COLOR. VARIATION IN IMAGE IS FOR DIAGRAMATIC PURPOSES OF PATTERN STEPPING IN AND OUT



**1 NEW HEADHOUSE EAST ELEVATION**  
 A 13 SCALE: 1/8" = 1'-0"



**2 NEW HEADHOUSE SOUTH ELEVATION**  
 A 13 SCALE: 1/8" = 1'-0"

**HEADHOUSE ELEVATIONS**

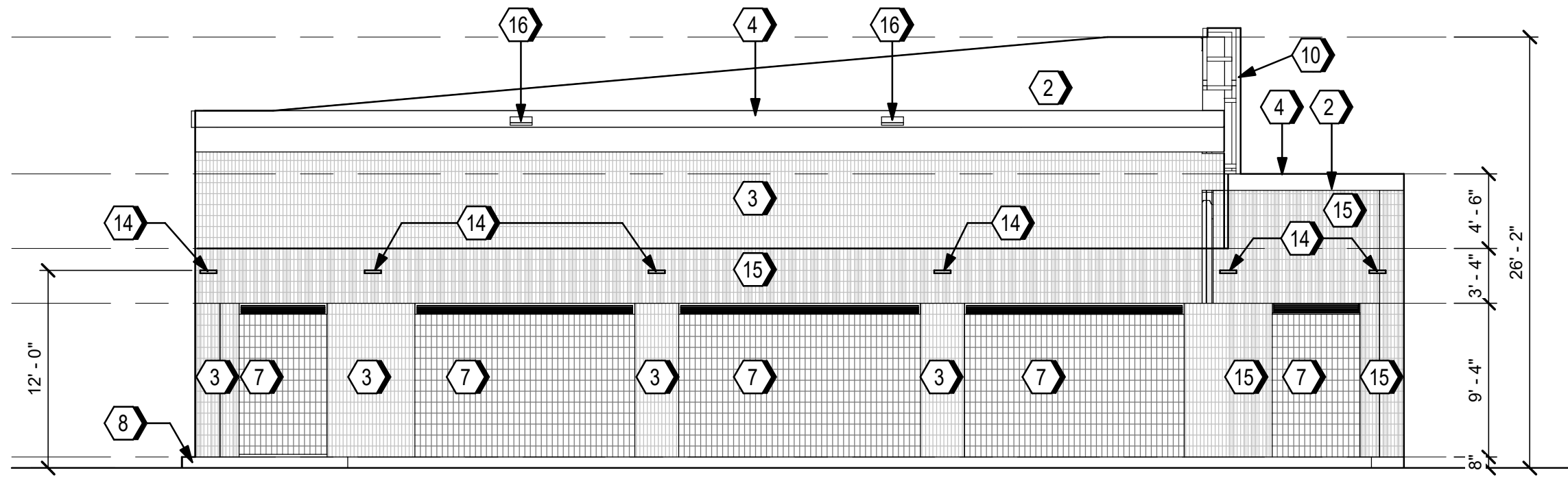
**CHINATOWN STATION**

JANUARY 29, 2025

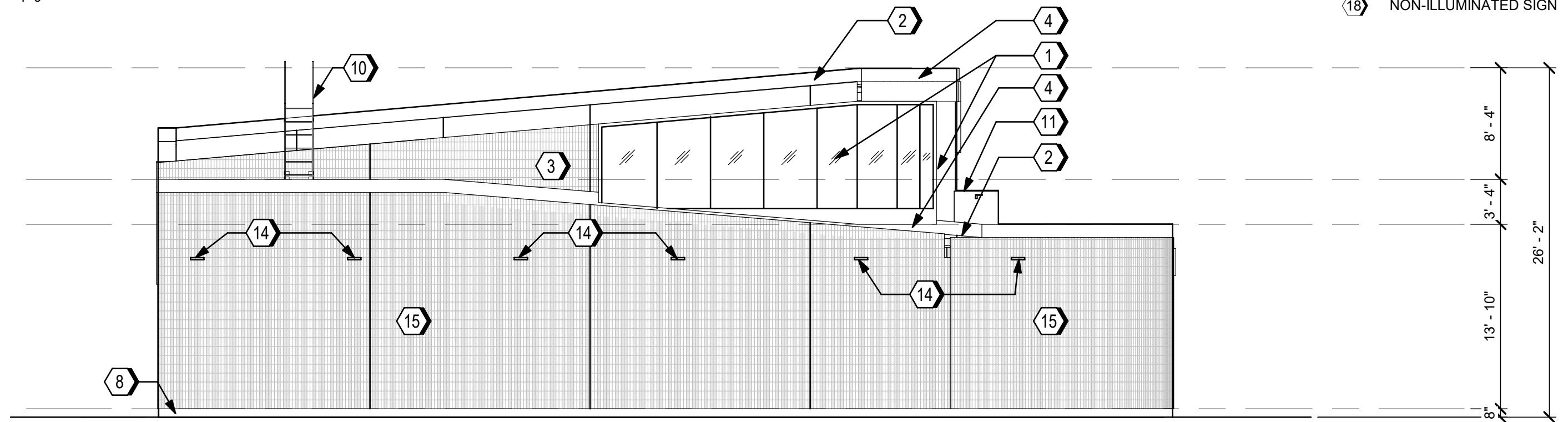
A 13

**KEYNOTES**

- ① IMPACT RESISTANT LAMINATED GLASS
- ② GREEN ROOF
- ③ FACE BRICK
- ④ METAL PANEL / COPING
- ⑤ NOT USED
- ⑥ COILING SECURITY GATE
- ⑦ SOLID GLASS BRICK
- ⑧ STONE PANELS
- ⑨ METAL MESH
- ⑩ FIXED LADDER
- ⑪ ROOF HATCH
- ⑫ LAMINATED GLASS
- ⑬ BOOTH WALL ASSEMBLY
- ⑭ EXTERIOR LIGHT
- ⑮ GLAZED BRICK WITH SAWTOOTH BRICK WYTHE
- ⑯ SCUPPER OPENING OVERFLOW ROOF DRAIN
- ⑰ ILLUMINATED SIGN
- ⑱ NON-ILLUMINATED SIGN



**1** NEW HEADHOUSE NORTH ELEVATION  
 A 14 SCALE: 1/8" = 1'-0"



**2** NEW HEADHOUSE WEST ELEVATION  
 A 14 SCALE: 1/8" = 1'-0"

HEADHOUSE ELEVATIONS  
**CHINATOWN STATION**  
 JANUARY 29, 2025  
 A 14







BIRD'S EYE VIEW FROM SOUTHEAST CORNER, LOOKING NORTHWEST

PROPOSED PERSPECTIVE  
**CHINATOWN STATION**  
JANUARY 29, 2025  
A 15





OVERALL PERSPECTIVE VIEW FROM 8TH STREET, LOOKING NORTHWEST

PROPOSED PERSPECTIVE  
**CHINATOWN STATION**  
JANUARY 29, 2025  
A 16





ENTRANCE PERSPECTIVE VIEW FROM 8TH STREET, LOOING NORTHWEST

PROPOSED PERSPECTIVE  
**CHINATOWN STATION**  
JANUARY 29, 2025  
A 17





ENTRANCE PERSPECTIVE VIEW FROM 8TH STREET, LOOING NORTHWEST

PROPOSED PERSPECTIVE  
**CHINATOWN STATION**  
JANUARY 29, 2025  
A 18





SIDE/ REAR PERSPECTIVE VIEW FROM 8TH STREET, LOOKING SOUTHWEST

PROPOSED PERSPECTIVE  
**CHINATOWN STATION**  
JANUARY 29, 2025  
A 19





INTERIOR PERSPECTIVE VIEW, LOOKING NORTHWEST AT ELEVATOR #2

PROPOSED PERSPECTIVE  
CHINATOWN STATION  
JANUARY 29, 2025  
A 20





INTERIOR PERSPECTIVE VIEW, LOOKING SOUTHEAST AT FARE LINE

PROPOSED PERSPECTIVE  
**CHINATOWN STATION**  
JANUARY 29, 2025  
A 21





INTERIOR PERSPECTIVE VIEW AT PLATFORM LEVEL, LOOKING NORTHWEST AT ELEVATOR #1

PROPOSED PERSPECTIVE  
**CHINATOWN STATION**  
JANUARY 29, 2025  
A 22





VIEW OF HEADHOUSE LOOKING NORTHWEST FROM THE INTERSECTION OF RACE & N 8TH STREETS



VIEW OF BUS SHELTER AT N 8TH STREET, LOOKING NORTH



VIEW OF PLAZA LOOKING WEST



VIEW OF HEADHOUSE & PLAZA LOOKING NORTHWEST

EXISTING PERSPECTIVES

CHINATOWN STATION

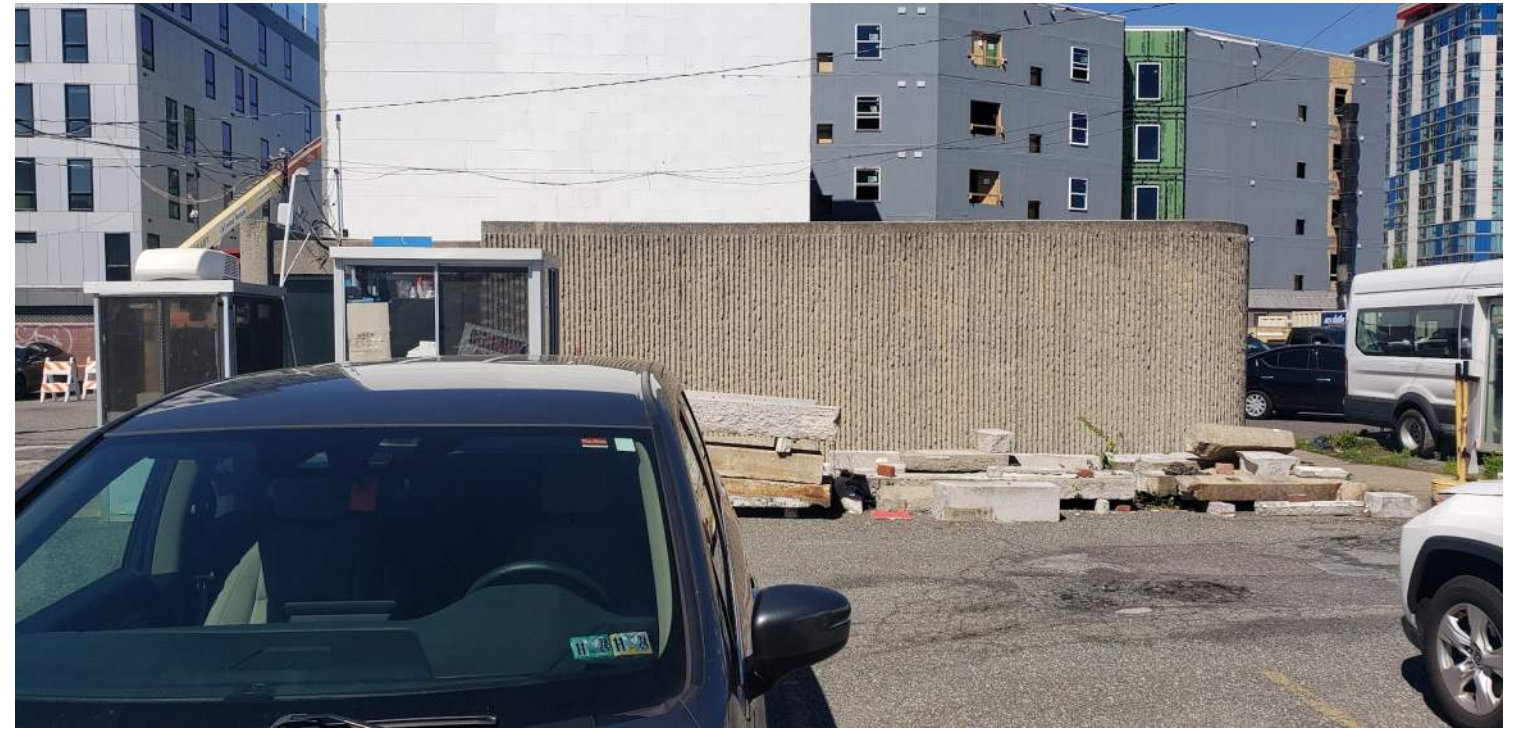
JANUARY 29, 2025

A 23





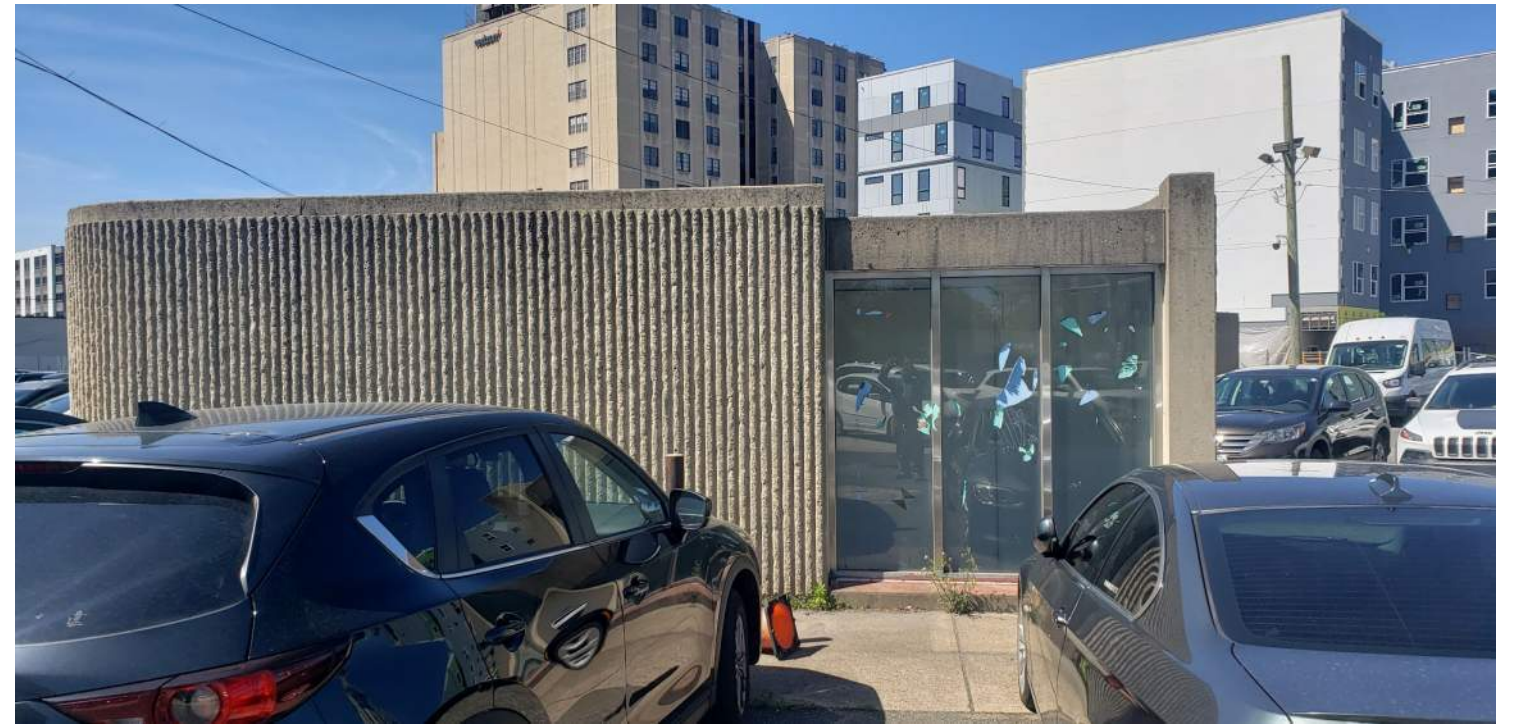
VIEW OF WEST EXISTING EGRESS STAIR HEADHOUSE LOOKING EAST



VIEW OF WEST EXISTING EGRESS STAIR HEADHOUSE LOOKING WEST



VIEW OF EAST EXISTING EGRESS STAIR HEADHOUSE LOOKING NORTHEAST



VIEW OF EAST EXISTING EGRESS STAIR HEADHOUSE LOOKING SOUTHWEST

EXISTING PERSPECTIVES

CHINATOWN STATION

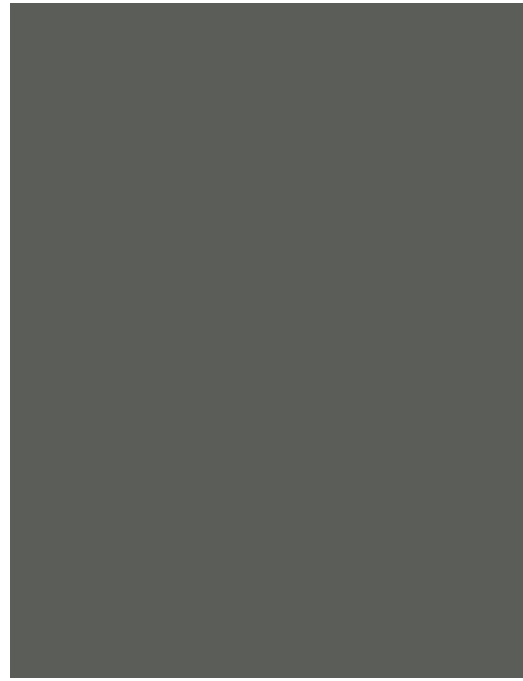
JANUARY 29, 2025

A 24





**INTERIOR CEILING**  
METAL PANEL



**FACADE ELEMENTS**  
METAL PANEL



**FACADE BASE**  
BASALT STONE VENEER



**WINDOWS**  
SOLID GLASS BRICK



**GREEN ROOF**  
INTENSIVE



**GREEN ROOF**  
EXTENSIVE



**CLERESTORY**  
GLASS STOREFRONT

**MATERIAL PALETTE**  
**CHINATOWN STATION**

JANUARY 29, 2025

A 25





EXTERIOR WALL  
GLAZED BRICK

BASIS OF DESIGN  
MANGANESE IRONSPOT BY ENDICOTT  
SMOOTH MODULAR







CHINATOWN LIGHT POLES



CLASSICAL CHINESE GARDEN DESIGN (ABOVE)  
KINETIC STONE SCULPTURE (BELOW)



STONE GROUPINGS, SENSE OF PLACE (ABOVE)  
BENCHING INTEGRATED WITH PLANTERS (BELOW)



CHINESE KATSURA (*CERCIDIPHYLLUM MAGNIFICUM*)  
ANCHORS PLANTING PALETTE



CULTURAL INTEGRATION SITE ELEMENTS