

# Memorandum



**To:** Henry Felsman, City Planner  
**From:** Priyanka Malik, Sr. Capital Program Manager, CPO  
**Date:** February 28<sup>th</sup>, 2025  
**Re:** Request for Administrative Approval

---

We respectfully request Administrative Approval for Site improvements at Ferko Playground, 1101 E Cayuga St, Philadelphia, PA 19124

The brief description of the project as stated below, and the enclosed drawings show the intended extent of work.

The project includes installing a new safety surface & new pieces of play equipment, as requested by Council. The project budget is \$389,672.00

Thank you for your attention. Please inform me, if you need more information.

cc: Aparna Palantino, Director, CPO  
Francesco Cerrai, Project Director, CPO  
Priyanka Malik, Sr. Project Manager, priyanka.malik@phila.gov or (215) 683-4472  
File: Project # 16-23-7127-01, Section 2.13

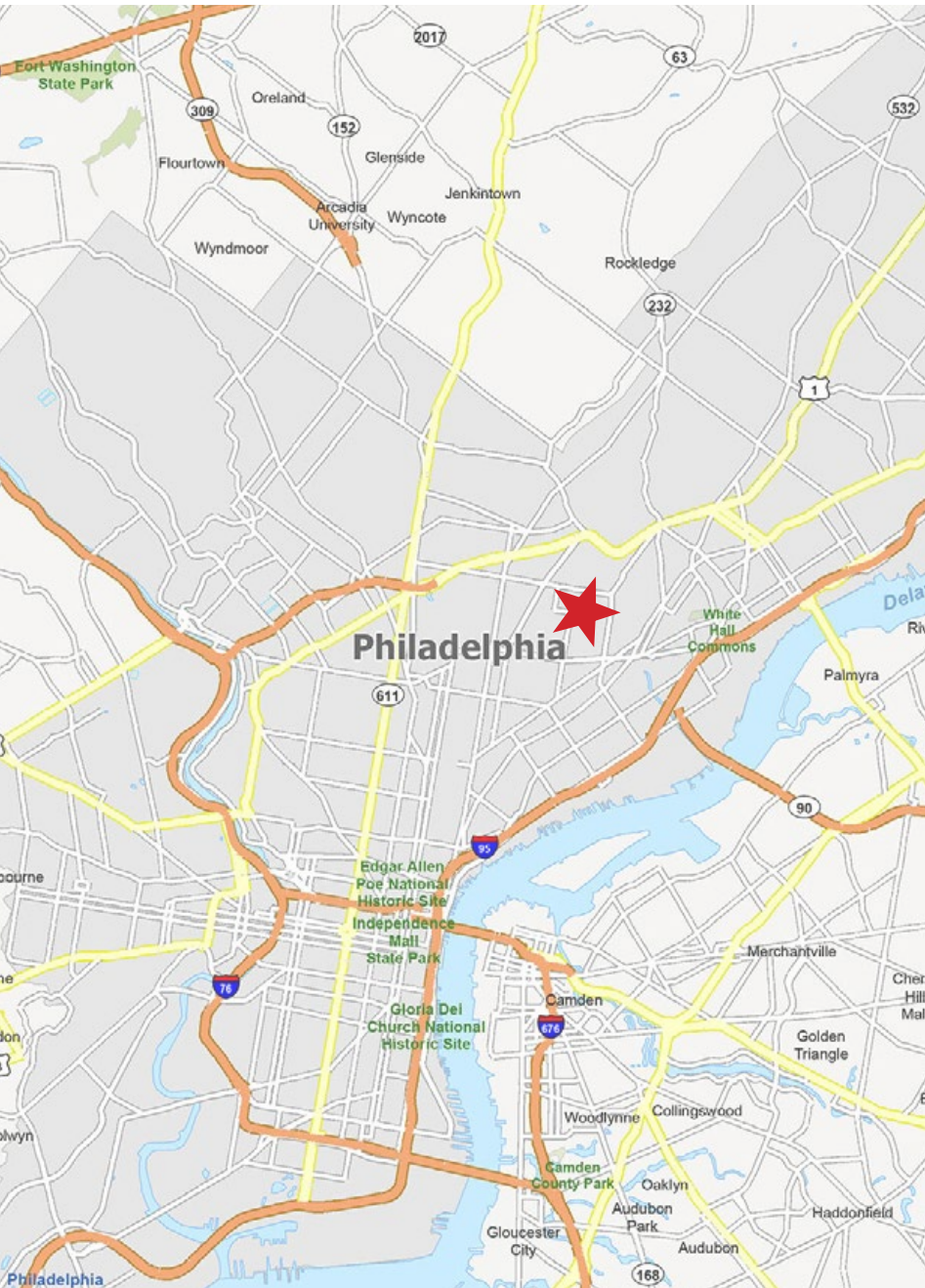


**FERKO PLAYGROUND | E CAYUGA ST**

FEB. 2025



# SITE CONTEXT



FERKO WITHIN PHILADELPHIA

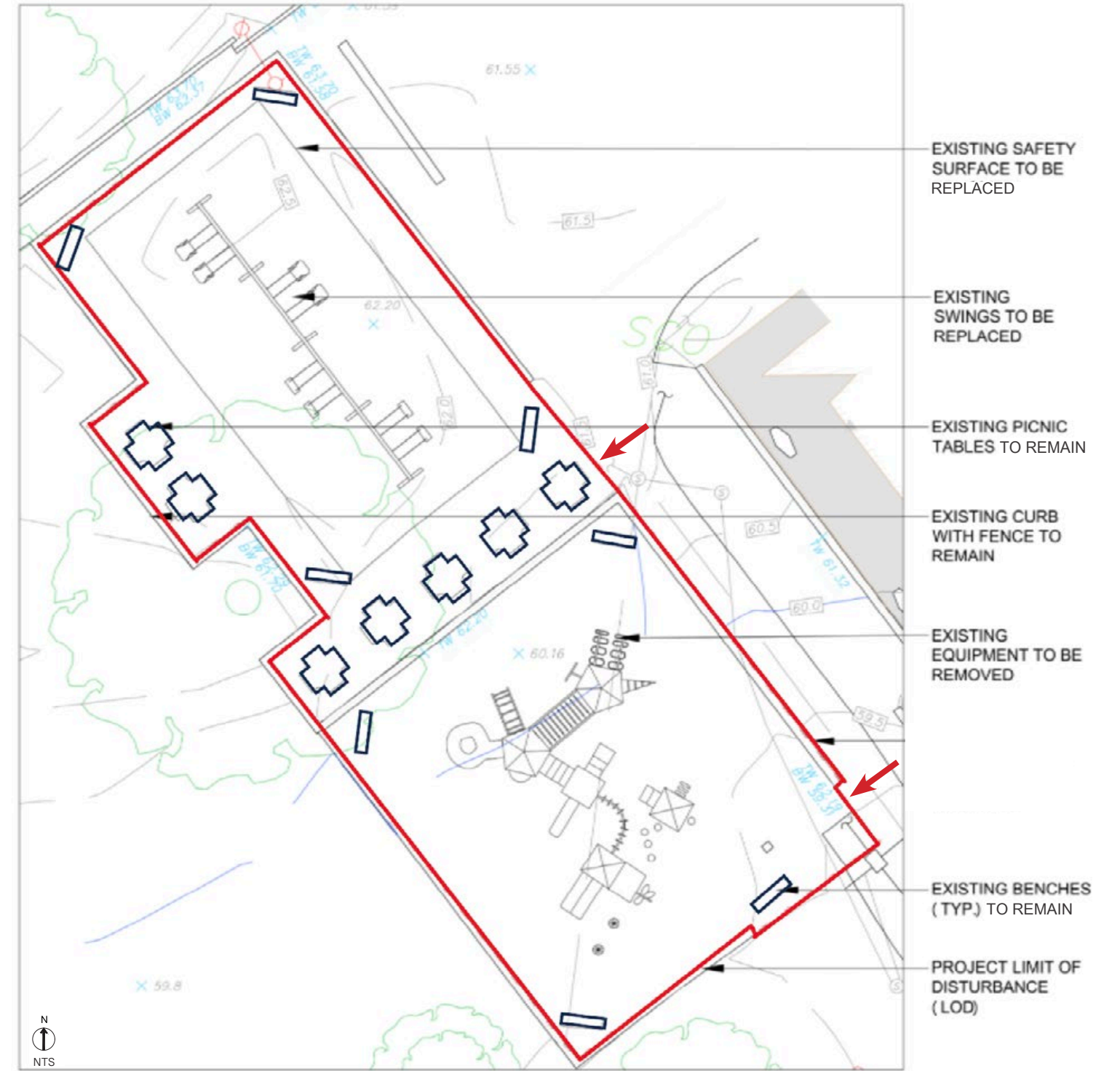


PLAYGROUND CONTEXT





# EXISTING CONDITIONS





# EXISTING CONDITIONS



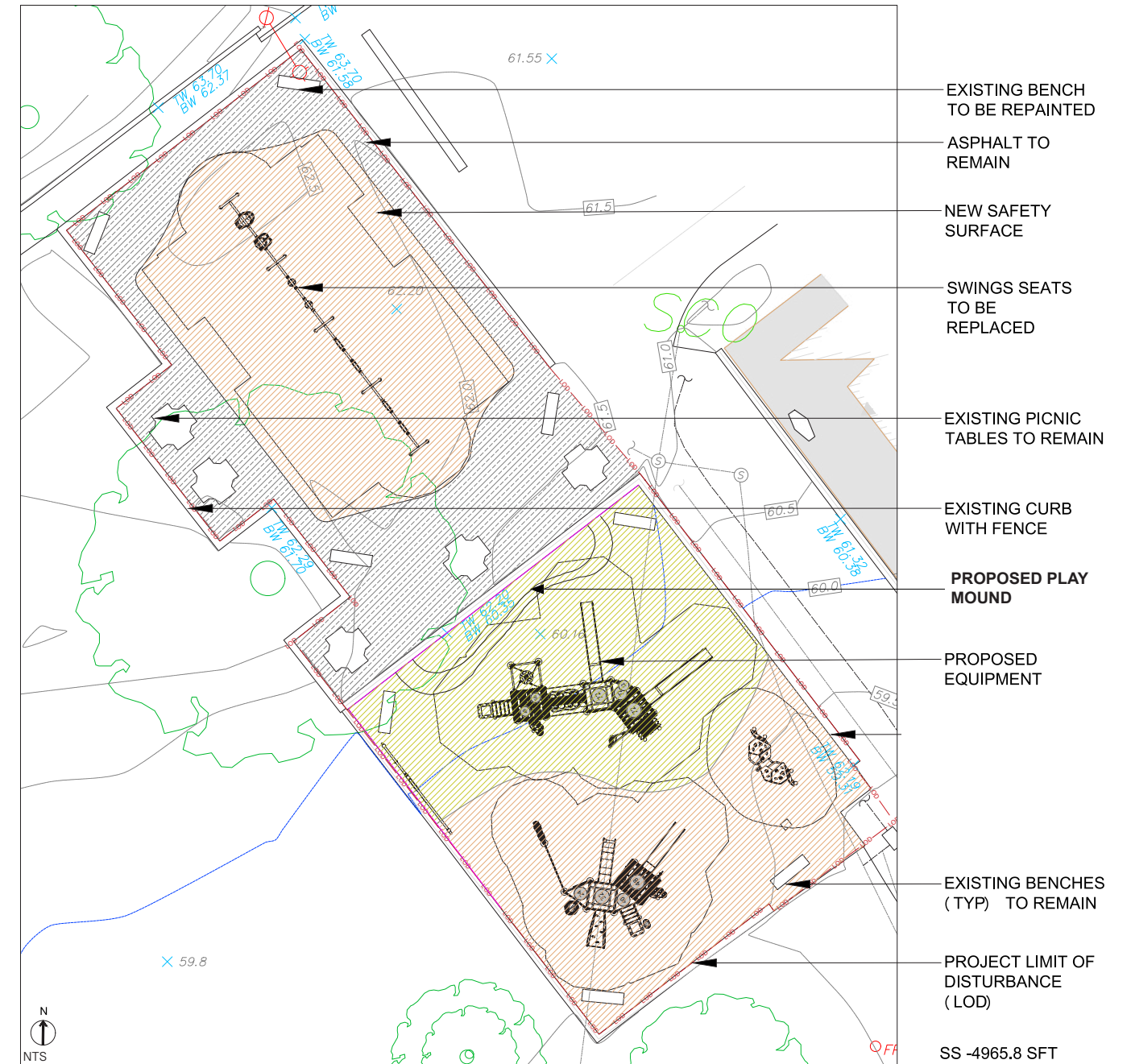


# COMMUNITY INPUT

The community was presented two different playground options.

The preferred option featured a nature theme and S.T.E.M. panels - bringing engineering and science concepts into an outdoor play environment.

The community preferred this play equipment and overall theme but requested a play mound to connect the upper and lower spaces.



# PROPOSED SITE PLAN

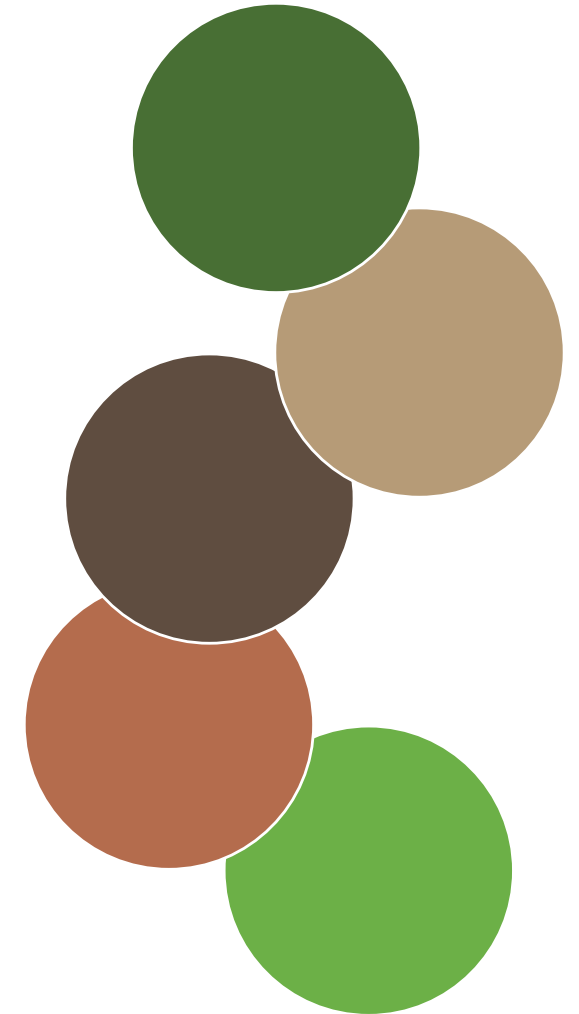




# PROPOSED PLAY EQUIPMENT



## COMMUNITY'S PREFERRED COLOR PALETTE





# PROPOSED PLAY EQUIPMENT





# Memorandum



**To:** Henry Felsman, City Planner  
**From:** Priyanka Malik, Sr. Capital Project Manager, CPO  
**Date:** Feb 5<sup>th</sup> 2024  
**Re:** Response to questions for Administrative Approval

---

Please see response below

1. **Any trees are being added or removed?**

**CPO** - No tree is being removed or added.

2. **What kind of Safety Surface is being used?**

**CPO** - We use poured in place rubber surfacing suitable for playground equipment. They are long lasting, and its thickness varies making it safe and shock absorbing where necessary.

3. **Are there any lights at the playground?**

**CPO**- There is an existing light pole at the swing area of the playground. No additional lights are being added as a part of this project. However, Council and PPR are working towards adding, external lights on the building- facing the playground and other areas of the site.

4. **Timings of the playground?**

**CPO**- PPR playgrounds are usually open from 7am- 7pm.

5. **Was a direct pedestrian pathway explored from the crosswalk to the playground?**

**CPO** - No routing items were explored as a part of this project. However, there is a discussion with PPR and Council on adding safety barriers from I Street to J Street along Cayuga.