

EZ SIGNS, LLC
1839 Bustleton Pike
Feasterville, PA 19053
P: 1 (866) 349-5444
F: (215) 676-3269

EZ SIGNS LLC
1 (866) FIX-LIGHT

January 6, 2025

Re: Sign Install for BonVet
2101 Walnut ST

Scope of work:

- SIGN A - Install two (2) statically LED-lit accessory wall signs 23.987 SF each
- SIGN C1 - Install one (1) NON-lit accessory awning 23.5 SF, copy/logo is 5.5 SF
- SIGN C2 - Install one (1) NON-lit accessory awning 27 SF
- SIGN C3 - Install one (1) NON-lit accessory awning 30 SF, copy/logo is 5.5 SF
- SIGN C4 - Install one (1) NON-lit accessory awning 27 SF

Natalya Atroshyna
EZ SIGNS LLC
1839 Bustleton Pike
Feasterville, PA 19053
p. 267- 406 - 0273
e. permits@signsinstall.com

PROJECT SCHEDULE

SIGN TYPE/ DESCRIPTION:	QTY.:	
SIGN A CHANNEL LETTER SIGN TRIMLESS	TWO (2)	
SIGN C FABRIC SHED STYLE AWNINGS with COPY AFFIXED TO BRICK BUILDING EXTERIOR	FOUR (4)	

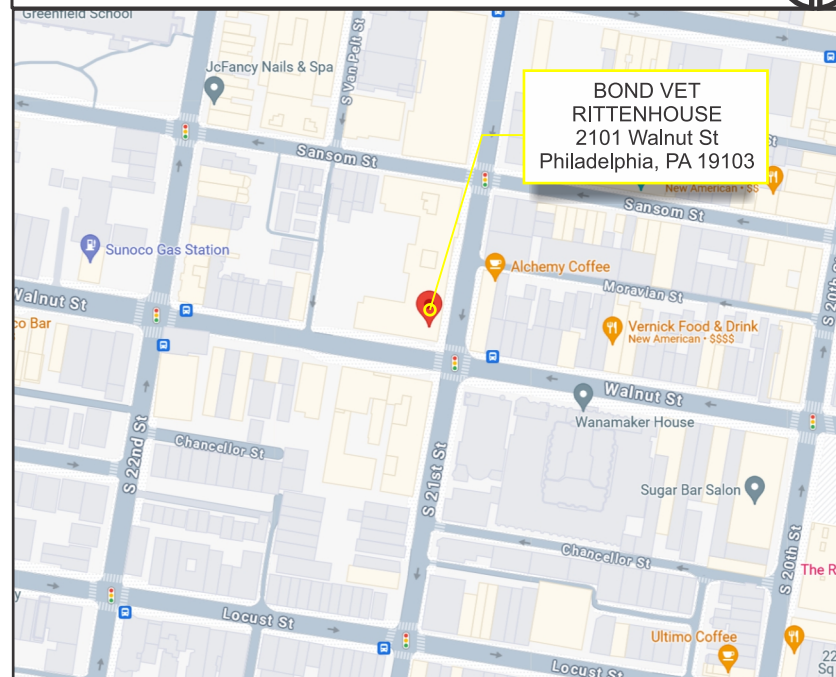
PROJECT:



BondVet

RITTENHOUSE
2101 Walnut St
Philadelphia, PA 19103

AREA MAP



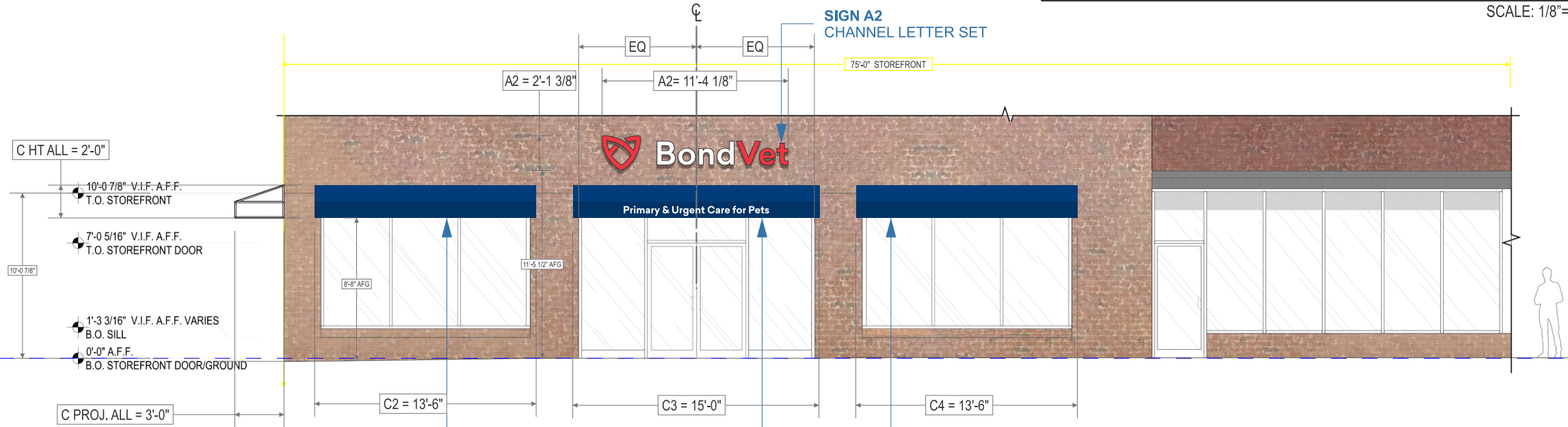
3D SITE VIEW



STOREFRONT - S. 21st STREET - ELEVATION

3

SCALE: 1/8"=1'-0"



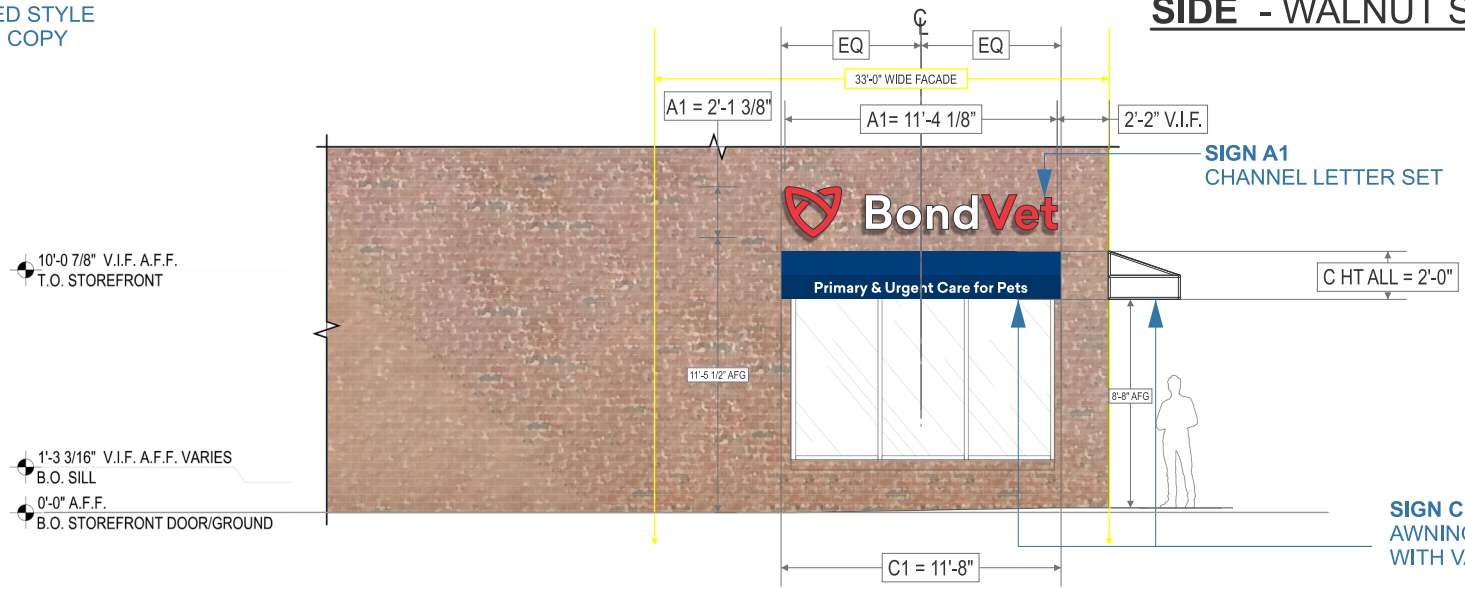
SIGN A2
CHANNEL LETTER SET

SIGN C
AWNINGS / SHED STYLE
WITH VALENCE COPY

SIDE - WALNUT STREET - ELEVATION

4

SCALE: 1/8"=1'-0"



SIGN A1
CHANNEL LETTER SET

SIGN C
AWNINGS / SHED STYLE
WITH VALENCE COPY

SIGN A - Install two (2) Statically LED-lit accessory wall signs 23.987 SF each

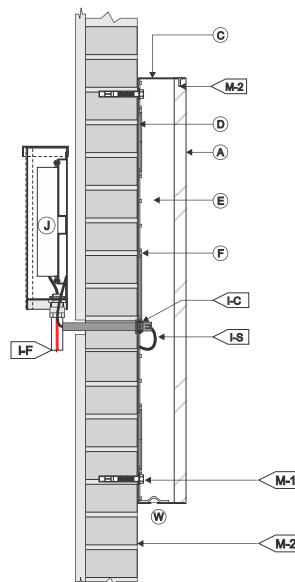
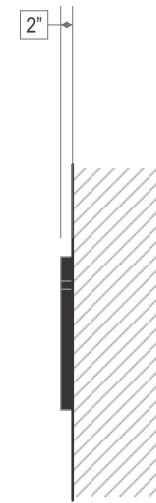
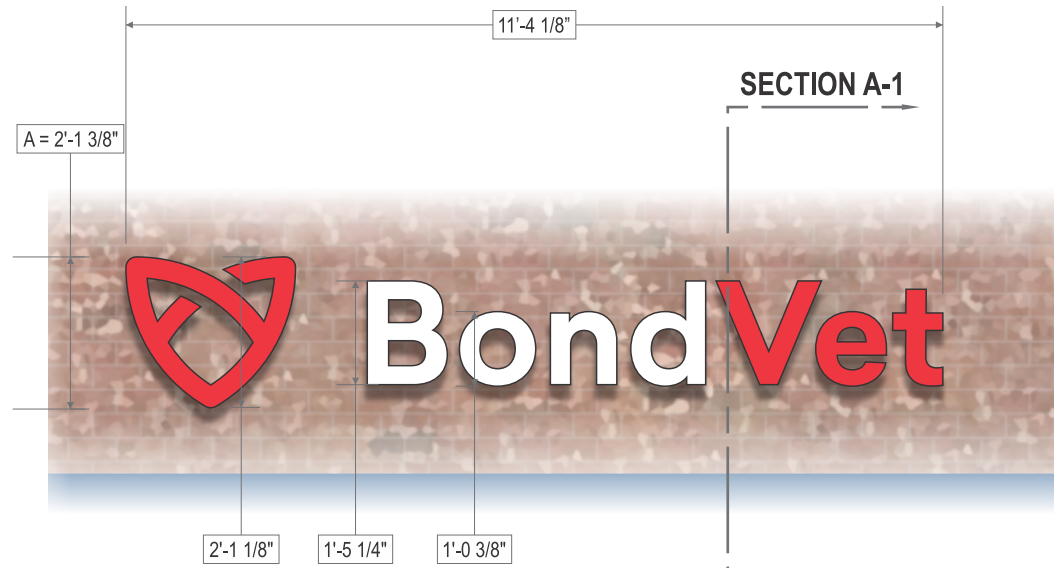
CHANNEL LETTER SIGN / TRIMLESS



SCALE: 3/8"=1'-0"

QTY.: TWO (2)

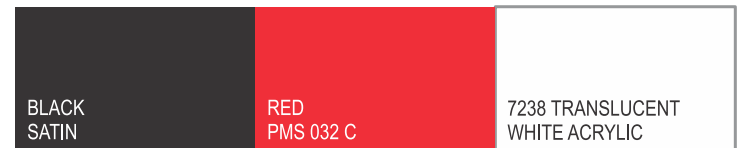
AREA: 25.375' x 136.125' = 23.987' ✓



CHANNEL LETTER SIGN / TRIMLESS - TYPICAL SCALE: N/A (A-1) SECT.

FRONT		SCALE: N.T.S.	
TRIMCAP FACE LIT CHANNEL LETTER / LED ILLUM. / EXTERIOR INSTALL / FLUSH MOUNTED			
(A) FACE	MATERIAL: 1/2" THK. WHITE ACRYLIC, W/ KERF FOR RETURN	(I) WIRING	I-C: 7/8" DIA. HOLE @ LEXAN W/ PAIGE WALL BUSTER CONNECTOR & CONDUIT. TO ELECTRICAL FEED
	BORDER: N/A		I-F: U.L. APPROVED LOW VOLTAGE CLASS II WIRING
	VINYL: TRANSLUCENT VINYL APPLIED 1st SURFACE		I-S: ALL CONNECTIONS TO BE IN WATERPROOF BOXES
	COLOR INFO.: RED TO MATCH PMS RED 032 C.	(J) POWER SUPPLY	J-TYPE: REMOTE LED POWER SUPPLY HOUSE IN FRONT ACCESS WEATHER-PROOF LED POWER SUPPLY BOX.
(C) RETURNS	DEPTH: 2"		VOLTAGE: 120V
	MATERIAL: ALUM. .040	(M) MOUNTING	M-1: 3/8" X 5" DEEP EXPANSION ANCHORS AS REQ'D
	COLOR/FINISH: BLACK/ SATIN		M-2: EXISTING MASONRY WALL
(D) BACKS	MATERIAL: 3MM ACM	(W) WEEP HOLES:	1/4" DIA. WITH COVER
	COLOR/FINISH: WHITE SATIN		
(E) INSIDE OF CAN	COLOR: WHITE		
(F) ILLUMINATION:	TYPE: STANDARD 6500K WHITE LEDS		
	ALL WIRES TO BE TERMINATED W/ A MECHANICAL UL LISTED FASTENER		

SIDE



120V INSTALL
 1. CUSTOMER G.C. TO PROVIDE ADEQUATE WOOD OR METAL BLOORING OR CONCRETE W/ FACE FRAMING AS REQUIRED.
 2. INSTALLER IS TO V.A.E. & PROVIDE THE PROPER NON-CORROSIVE MOUNTING HARDWARE TO ENSURE SAFE INSTALLATION.
 3. ALL EXTERIOR FACADE PENETRATIONS TO BE WATER-TIGHT.
 4. INSTALLATION TO MEET CURRENT N.E.C., U.L. & LOCAL CODES.
 LOCATION OF THE DISCONNECT SWITCH AFTER INSTALLATION SHALL COMPLY WITH ARTICLE 600.20(A) (1) OF THE NATIONAL ELECTRICAL CODE.

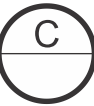
ELECTRICAL
 1. ALL ELECTRICAL COMPONENTS TO BE UL APPROVED.
 2. CUSTOMER IS RESPONSIBLE FOR ONE (1) 120V-0W DEDICATED CIRCUIT W/ GROUND PER SIGN TO V.A.E. BY G.C.
 3. THIS SIGN IS INTENDED TO BE INSTALLED IN ACCORDING W/ THE REQUIREMENTS OF ARTICLE 600 OF THE NATIONAL ELECTRICAL CODE AND/OR OTHER APPLICABLE LOCAL CODES. THIS INCLUDES PROPER GROUNDING & BONDING OF THE SIGN.

FABRICATOR
 1. PLACEMENT OF LIGHTING ELEMENTS FOR OPTIMUM ILLUMINATION OF SIGN TO BE DETERMINED BY PRODUCTION.
 2. MANUFACTURER & U.L. LABELS TO BE APPLIED & VISIBLE FROM THE GROUND, LOCATED ON THE LAST CHANNEL LETTER OR END OF THE SIGN BOX/PRE-STANDING SIGN.

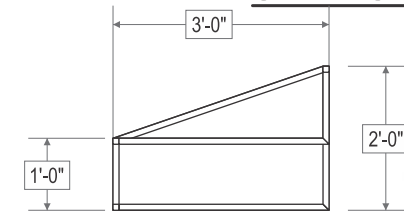
UL
 ALL ELECTRICAL COMPONENTS ARE TO BE UL APPROVED.

SIGN C - Install four (4) NON-lit awnings.

SHED STYLE AWNINGS with COPY

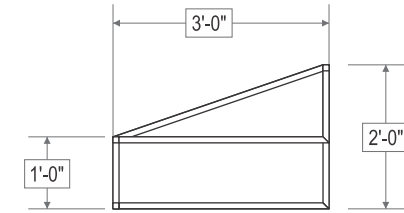


SCALE: 3/8"=1'-0"
 QTY.: FOUR (4)
 AREA VARIES ✗

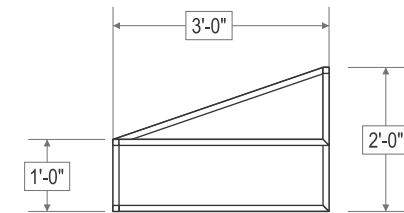


TAGLINE COPY AREA: 7 1/2" x 106.25" = 5.533' ✗

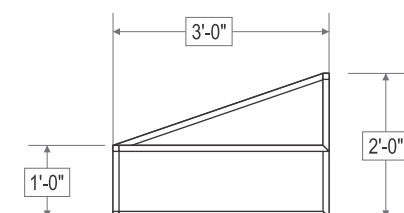
AWNING C1- TYP. SIDE



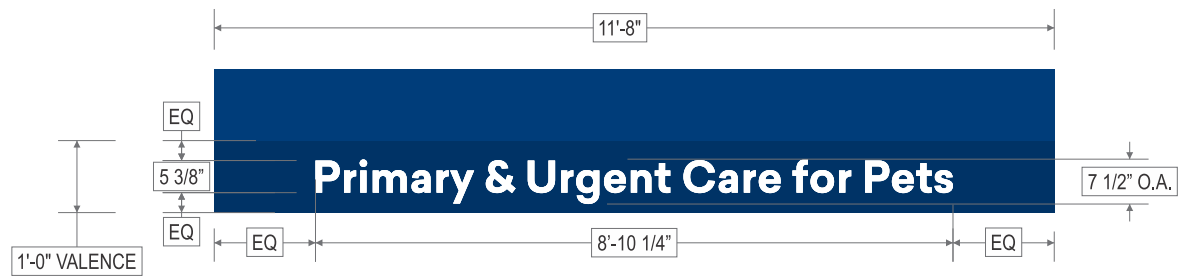
AWNING C2- TYP. SIDE



AWNING C3- TYP. SIDE



AWNING C4- TYP. SIDE

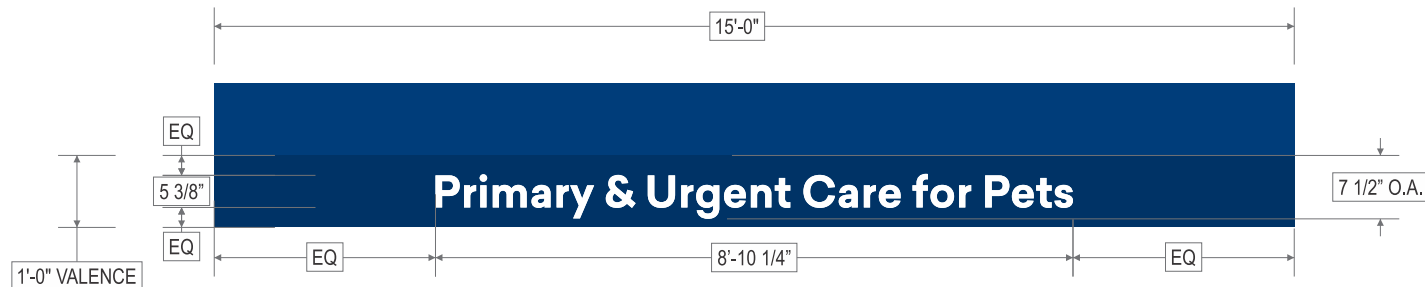


AWNING C1- FRONT 23.5 SF (logo/copy area is 5.5 SQ FT)

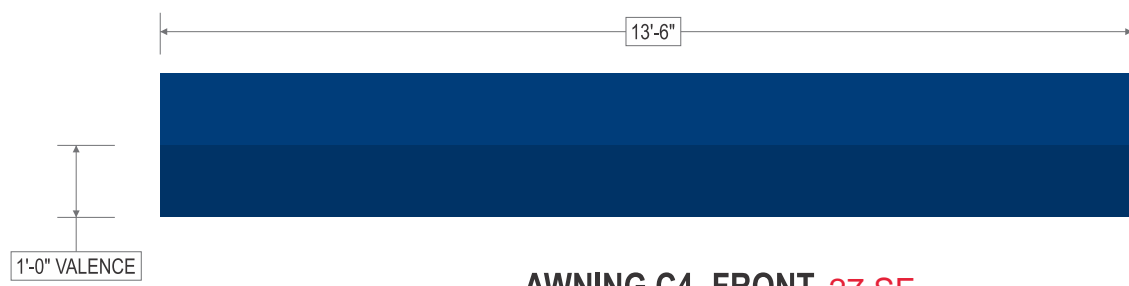
TYP. SECTION C-1



AWNING C2- FRONT 27 SF



AWNING C3- FRONT 30 SF (logo/copy area is 5.5 SQ FT)

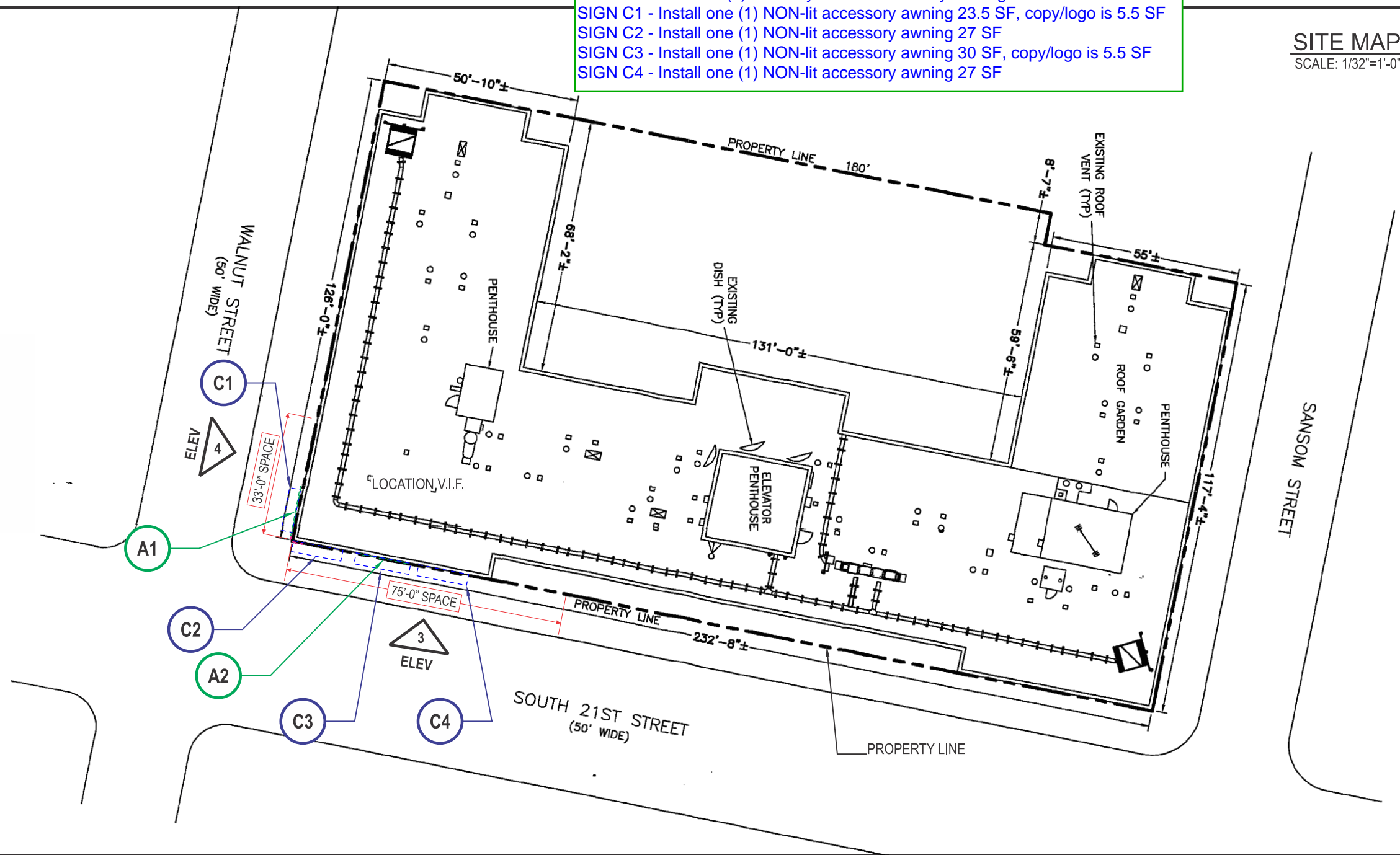


AWNING C4- FRONT 27 SF

FABRIC AWNING
 TO MATCH
 BLUE 7463 C

WHITE

- SIGN A - Install two (2) statically LED-lit accessory wall signs 23.987 SF each
- SIGN C1 - Install one (1) NON-lit accessory awning 23.5 SF, copy/logo is 5.5 SF
- SIGN C2 - Install one (1) NON-lit accessory awning 27 SF
- SIGN C3 - Install one (1) NON-lit accessory awning 30 SF, copy/logo is 5.5 SF
- SIGN C4 - Install one (1) NON-lit accessory awning 27 SF



LIENT & LOCATION



RITTENHOUSE
 2101 Walnut St
 Philadelphia, PA 19103