

# BROWN EXPEDITING SERVICES

---

December 10, 2024

Philadelphia Art Commission  
1515 Arch Street, 13<sup>th</sup> Floor  
Philadelphia, PA 19102

Re: Bond Vet  
2101 Walnut Street

To Whom it May Concern:

Please review this package for a flat wall sign, 2'-1 3/8" x 31'-11 1/2".  
Four (4) different length awnings with name and logo on valance, each 10" x 4'-6 1/8"

If you need any further information, please contact me.

Thank you,  
Linda

# PROJECT SCHEDULE

SIGN TYPE/ DESCRIPTION:	QTY.:	PG.
<b>SIGN A</b> FACE LIT CHANNEL LETTERS with TRIM-CAP FACES AFFIXED TO BRICK BUILDING.	ONE (1) CH LTR SET	4
<b>SIGN B</b> 1" DEEP ALUMINUM CORNER SIGN / NON-ILLUMINATED BRAKE FORM FABRICATION MOUNTED TO BRICK BLDG CORNER with ANGLE CLIPS	ONE (1) BLDG SIGN	6
<b>SIGN C</b> FABRIC SHED STYLE AWNINGS with LOGOS AFFIXED TO BRICK BUILDING EXTERIOR	FOUR (4X) AWNINGS	8
<b>SIGN D - TEMP COMING SOON GRAPHICS</b> DIGITALLY PRINTED WINDOW GRAPHICS	TWENTY-ONE (21) WINDOWS	11

PROJECT:



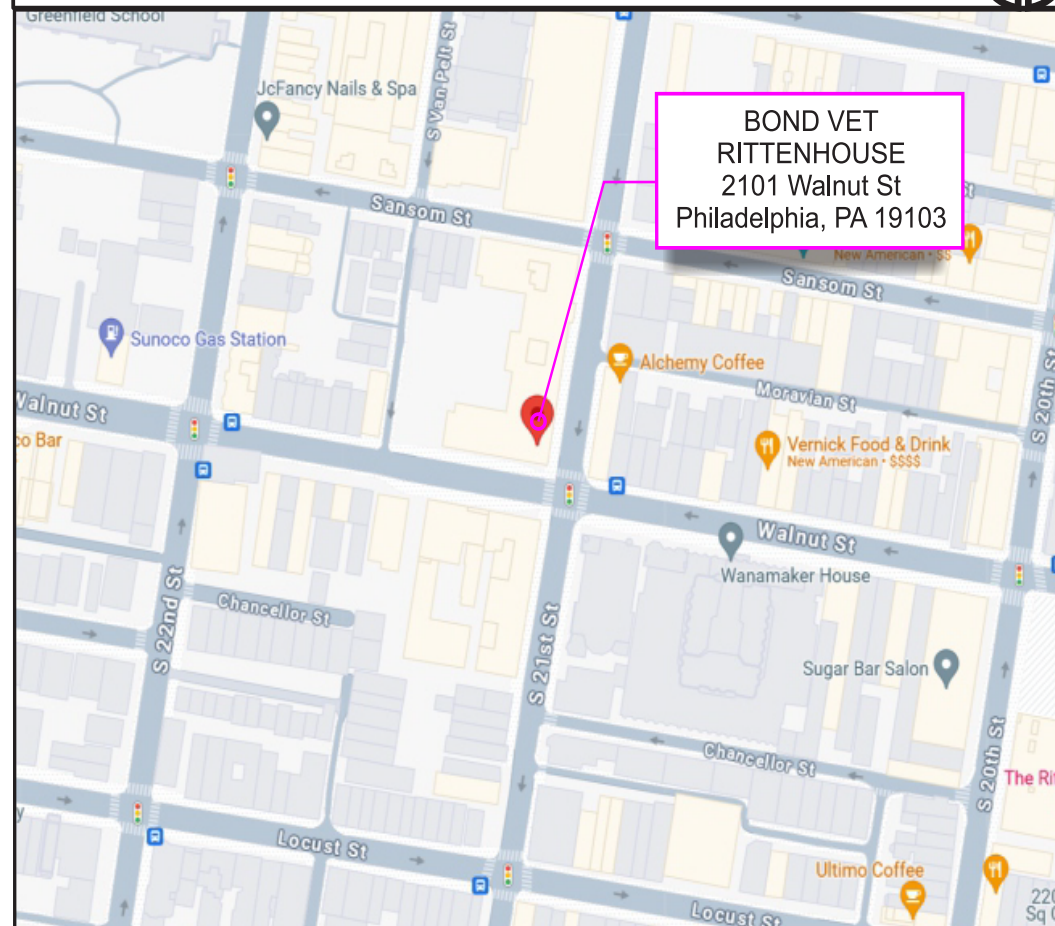
## BondVet

**BOND VET**  
**RITTENHOUSE**  
2101 Walnut St  
Philadelphia, PA 19103

# REVISIONS

#	DATE	DB	NOTES
0	07/31/2024	FOSTER	FIRST DRAFT
1	09/07/2024	FOSTER	ADD WINDOW GRAPHICS / ADD WINDOW SIZING / ADD GRAPHICS MODIFIED TO FIT WINDOW SIZING PER SS
1	09/09/2024	FOSTER	ADD NEWLY SUPPLIED COMING SOON GRAPHICS TO PACKAGE
2	09/24/2024	FOSTER	Bond_Rittenhouse_Comingsoon_9.4.pdf PER -DD / SS REVISE PER CASPER / SUPDocs - SS

## AREA MAP



## 3D SITE VIEW



01. Logo Colorways

The Bond Vet lockup comes in a positive and a negative color versions.

Positive: on white and any light, neutral brand color

Negative: On the brand's navy

On any other background color, the logobe full white or full navy.

It can be black if color isn't available to be printed

On any other background color, the logo should be full white or full navy.

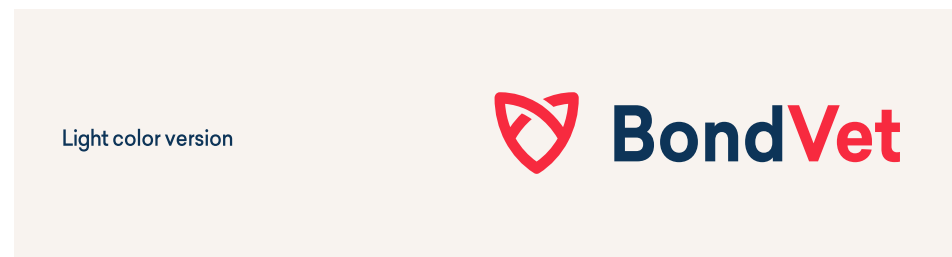
Positive color version



Negative color version



Light color version



Colored version where the red isn't very readable



02. Colors Colorways

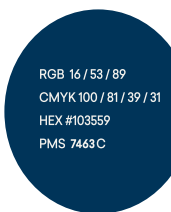
Navy, Peach, beige and Red are the primary colors of Bond Vet and are used the most often.

The blues (medium and light) and greens constitute the secondary palette

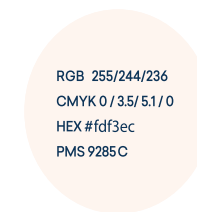
The Teal, Lilac and Coral are the additional colors and can be used if they help the context and design.

Primary Colors

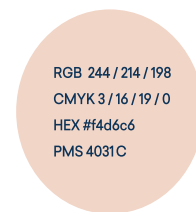
Navy



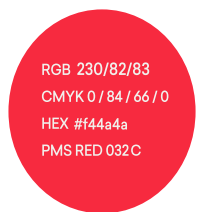
Cream



Peach



Red

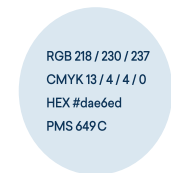


Secondary Color

Medium blue



Light Blue



Light Green



Dark Green



Additional Colors

Teal



Lilac



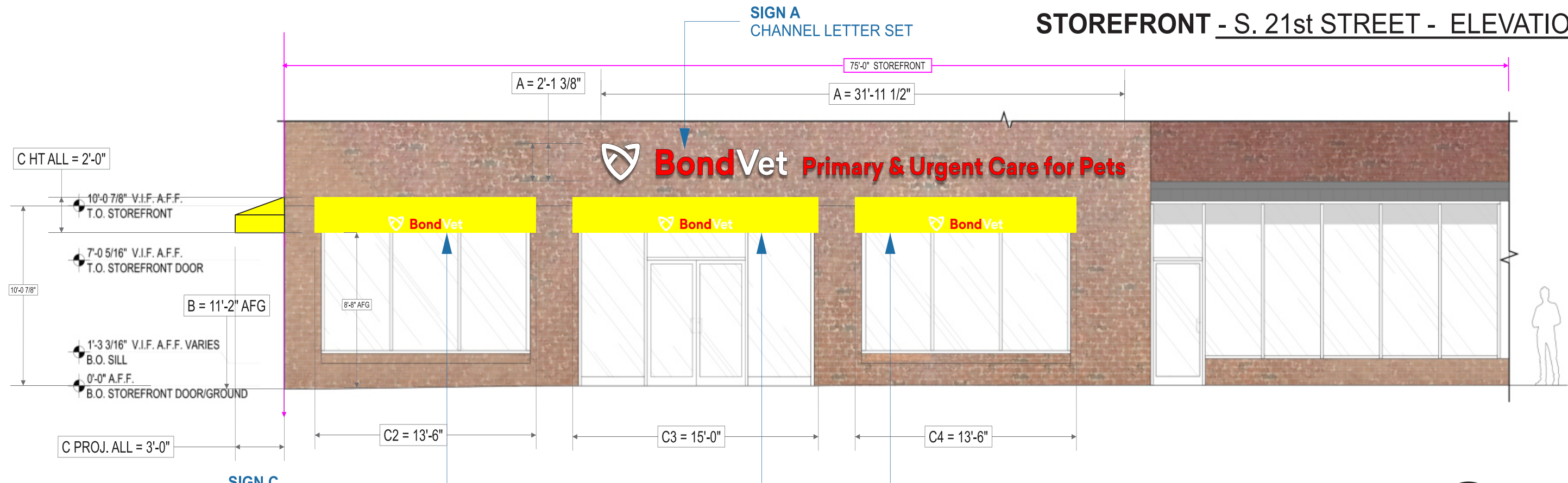
Coral





**STOREFRONT - S. 21st STREET - ELEVATION**

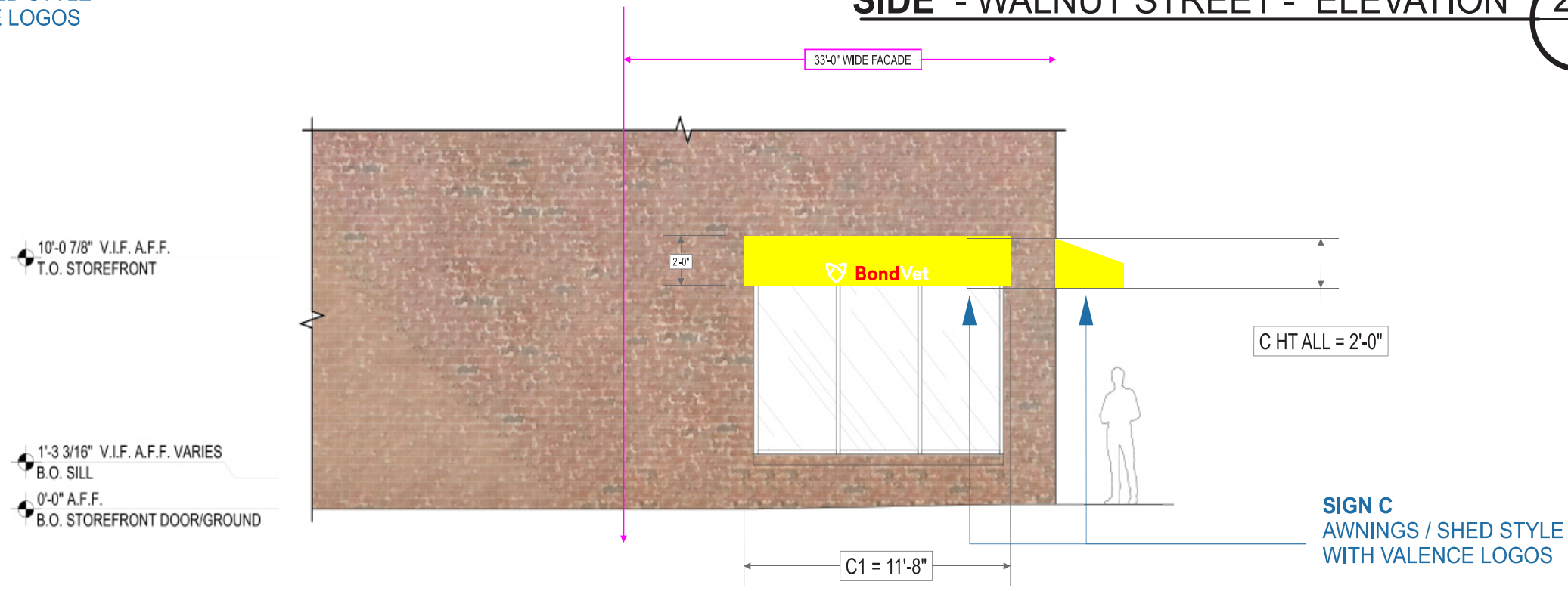
1.0



**SIGN C**  
AWNINGS / SHED STYLE  
WITH VALENCE LOGOS

**SIDE - WALNUT STREET - ELEVATION**

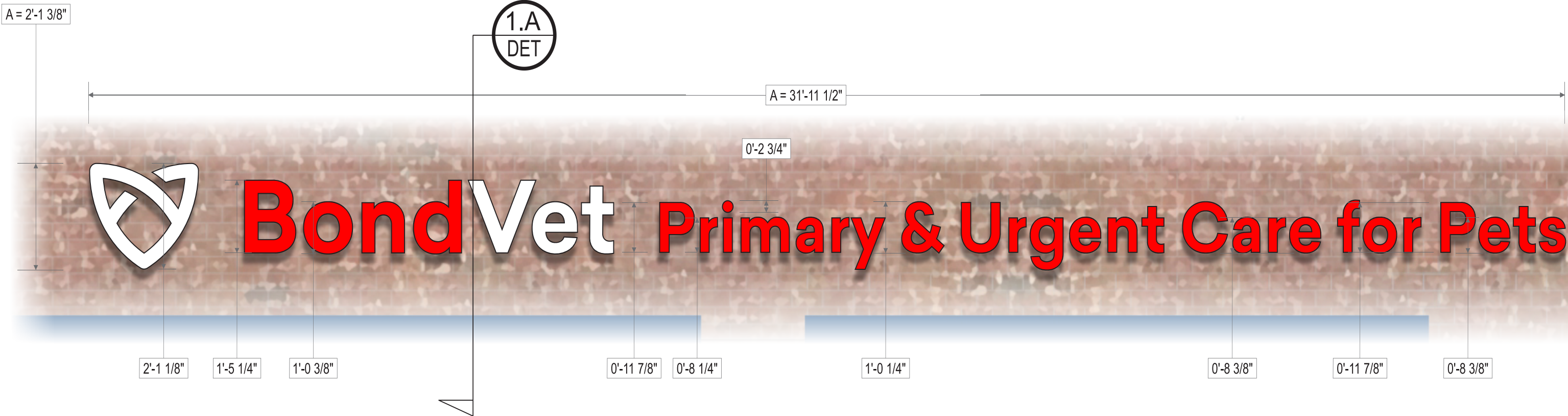
2.0



**SIGN C**  
AWNINGS / SHED STYLE  
WITH VALENCE LOGOS

LEAD NO. 220991 R2	SM/PM RR/SS.DD	REVIEW	SHEET NO. <b>3</b>
DATE 07/31/2024	ARTIST FOSTER	SEG. NO.	





- CREATE ONE (1X) CHANNEL LETTER SIGN
- FACE LIT WHITE LED MODULES
- 1" TRIM-CAP IN BLACK
- BLACK RETURNS - 3" DEEP
- RED VINYL ON FACE OF LOGO & VET
- WHITE TRANSLUCENT ACRYLIC FACES
- LETTERS MOUNT FLUSH TO BRICK WALL WITH MASONRY FASTENERS AS REQUIRED.

**= 67.578559027778 Sq.Ft.** ( 67.58 sq.ft. )

The Breakdown is:

TOTAL	Number	Comment
Square Footage	67.578559027778	Square Feet
Height in Feet	2.1145833333333	height feet + height inches
Length in Feet	31.958333333333	length feet + length inches
Square Inches	9731.3125	Sq.In.
Height in Inches	25.375	height feet + height inches
Length in Inches	383.5	length feet + length inches



# CHANNEL LETTER SIGN / TRIM-CAP - TYPICAL

SCALE: NA

1.A  
DET

BLACK SATIN

ORAFOL 8500 RED  
#323 CORAL RED

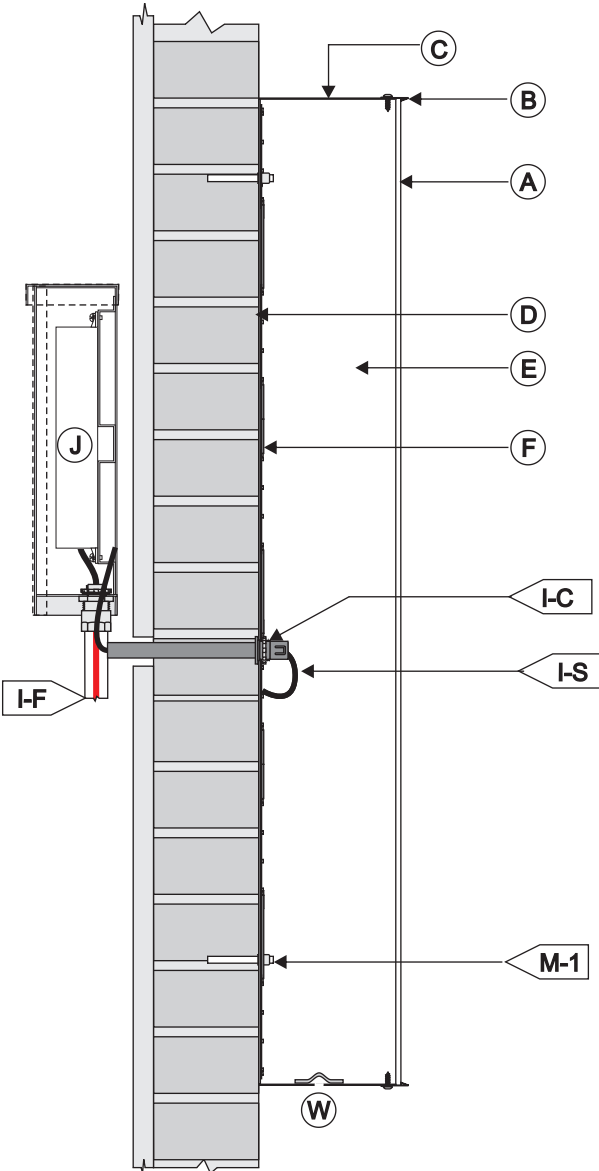
7238 TRANSLUCENT  
WHITE ACRYLIC

## TRIMCAP FACE LIT CHANNEL LETTER / LED ILLUM. / EXTERIOR INSTALL / FLUSH MOUNTED

SCALE: N.T.S.

<b>(A) FACE</b>	
MATERIAL:	3/16" ACRYLIC
BORDER:	N/A
VINYL:	ORAFOL 8500 RED (BOND VET SPEC)
COLOR INFO.:	N/A
<b>(B) TRIMCAPS</b>	
SIZE / FINISH	1" / MATCH RETURNS
<b>(C) RETURNS</b>	
DEPTH:	3"
MATERIAL:	ALUM. .040
COLOR:	BLACK
FINISH:	SATIN
<b>(D) BACKS:</b>	
MATERIAL:	3MM ACM
COLOR/FINISH:	WHITE SATIN
<b>(E) INSIDE OF CAN</b>	
COLOR:	PRE-COAT WHITE
<b>(F) ILLUMINATION:</b>	
TYPE:	STANDARD 6500K WHITE LEDS
<b>ALL WIRES TO BE TERMINATED W/ A MECHANICAL UL LISTED FASTENER</b>	

<b>(I) WIRING</b>	
I-C	7/8" DIA. HOLE @ LEXAN W/ PAIGE WALL BUSTER CONNECTOR & CONDUIT.
I-F	TO ELECTRICAL FEED
I-S	U.L. APPROVED LOW VOLTAGE CLASS II WIRING
ALL CONNECTIONS TO BE IN WATERPROOF BOXES	
<b>(J) POWER SUPPLY</b>	
TYPE:	REMOTE LED POWER SUPPLY HOUSE IN FRONT
ACCESS WEATHER-PROOF LED POWER SUPPLY BOX.	
VOLTAGE:	120V
<b>(M) MOUNTING</b> SEE MOUNTING NOTE.	
M-1	MECHANICAL MASONRY FASTENERS AS REQ
<b>(W) WEEP HOLES:</b> 1/4" DIA. WITH COVER	



**120V  
INSTALL**

- CUSTOMER G.C. TO PROVIDE ADEQUATE WOOD OR MTL. BLOCKING IN CORRELATION W/ FAÇADE FRAMING AS REQUIRED.
- INSTALLER IS TO V.I.F. & PROVIDE THE PROPER NON-CORROSIVE MOUNTING HARDWARE TO ENSURE SAFE INSTALLATION.
- ALL EXTERIOR FAÇADE PENETRATIONS TO BE WATERTIGHT.
- INSTALLATION TO MEET CURRENT N.E.C., U.L. & LOCAL CODES. LOCATION OF THE DISCONNECT SWITCH AFTER INSTALLATION SHALL COMPLY WITH ARTICLE 600.6(A) (1) OF THE NATION ELECTRICAL CODE

**ELECTRICAL**

- ALL ELECTRICAL COMPONENTS TO BE U.L. APPROVED.
- CUSTOMER IS RESPONSIBLE FOR ONE (1) 120v/ 20a DEDICATED CIRCUIT w/ GROUND PER SIGN TO WITHIN 6' OF SIGN.
- THIS SIGN IS INTENDED TO BE INSTALLED IN ACCORDING W/ THE REQUIREMENTS OF ARTICLE 600 OF THE NATIONAL ELECTRICAL CODE AND/OR OTHER APPLICABLE LOCAL CODES. THIS INCLUDES PROPER GROUNDING & BONDING OF THE SIGN.

**FABRICATOR**

- PLACEMENT OF LIGHTING ELEMENTS FOR OPTIMUM ILLUMINATION OF SIGN TO BE DETERMINED IN PRODUCTION.
- MANUFACTURER & U.L. LABELS TO BE APPLIED & VISIBLE FROM THE GROUND, LOCATED ON THE LAST CHANNEL LETTER OR END OF THE SIGN BOX/FREESTANDING SIGN



11 Azar Court • P.O. Box 24186  
Baltimore, Maryland 21227  
T: 410-247-5300 • F: 410 247-1944  
Reproduction In Whole or Part  
Prohibited without Express  
Permission of Person|Triangle © TSS

**CLIENT & LOCATION**

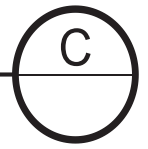


BOND VET  
RITTENHOUSE  
2101 Walnut St  
Philadelphia, PA 19103

LEAD NO. 220991 R2	SM/PM RR/SS.DD	REVIEW	SHEET NO. <b>5</b>
DATE 07/31/2024	ARTIST FOSTER	SEG. NO.	



**SIGN C - SHED STYLE AWNINGS with LOGOS**

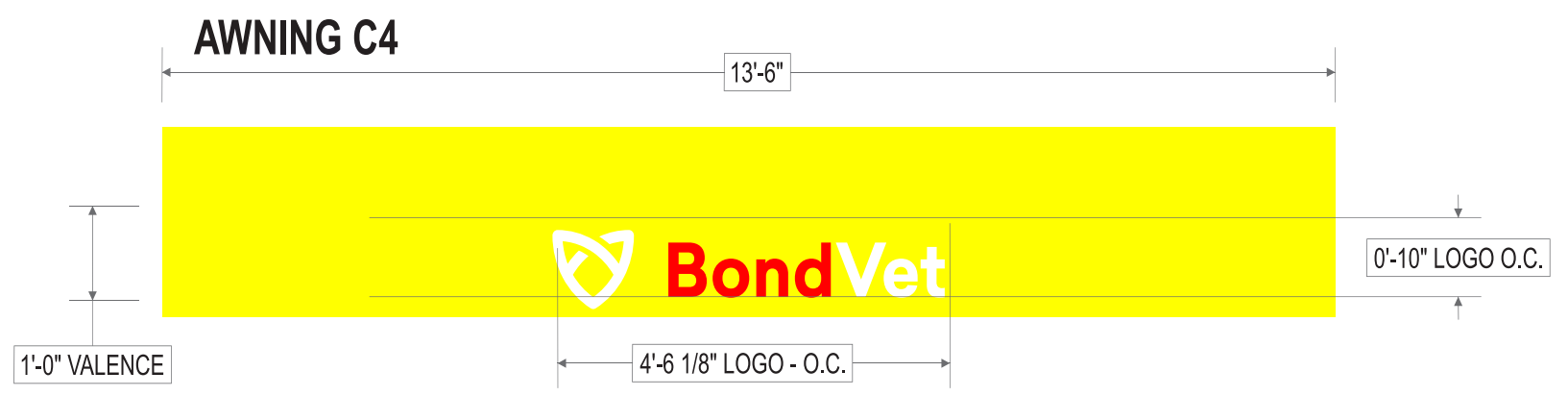
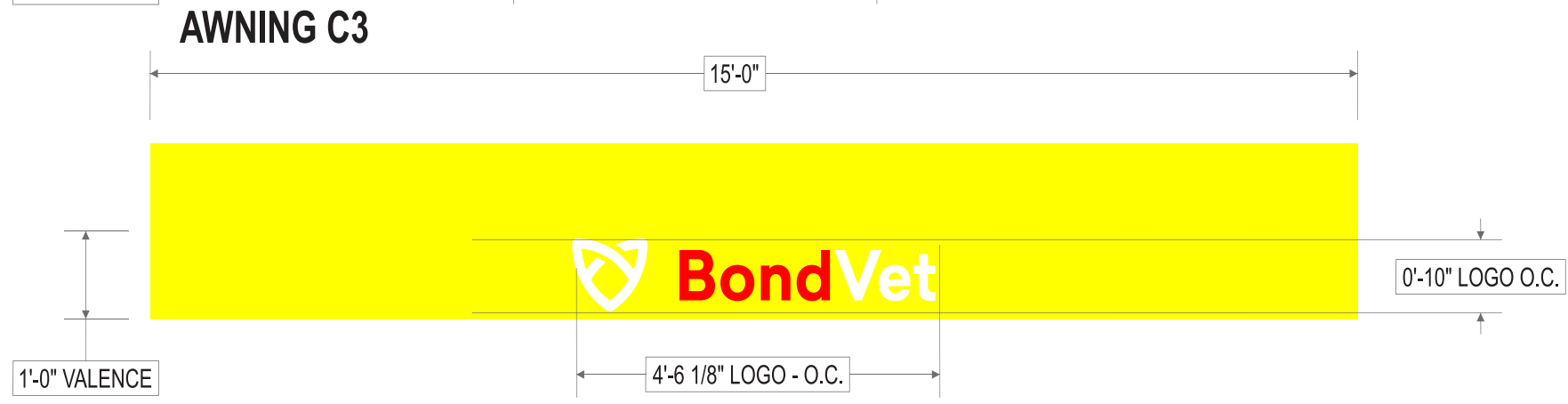
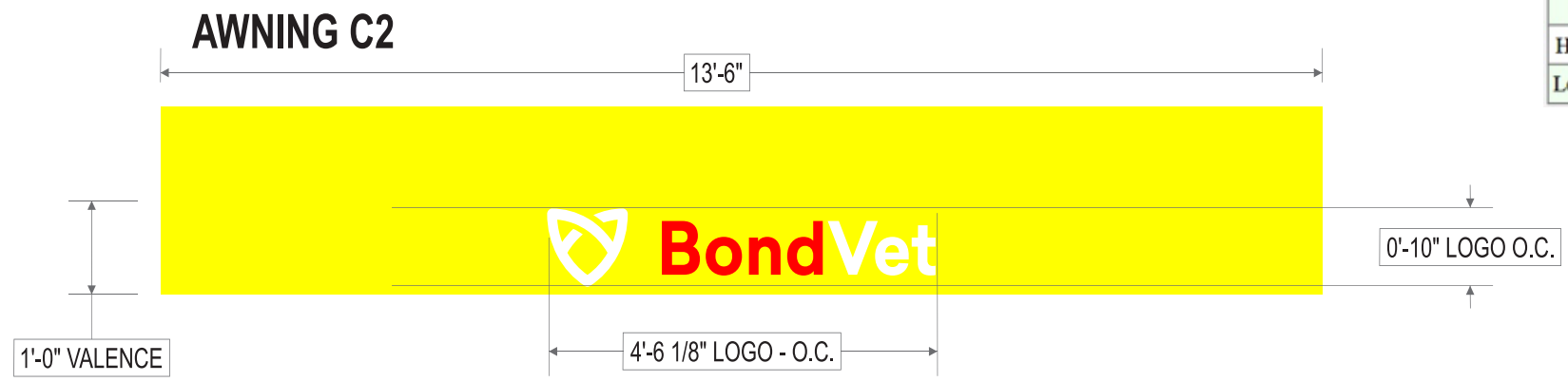
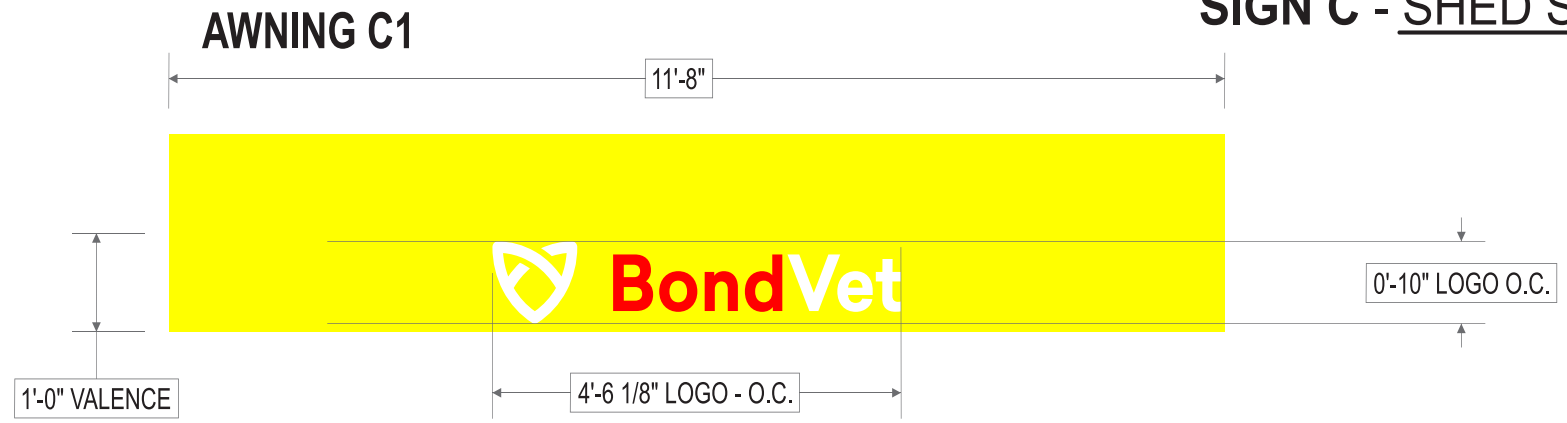
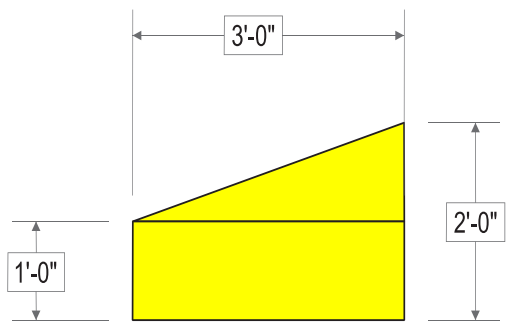
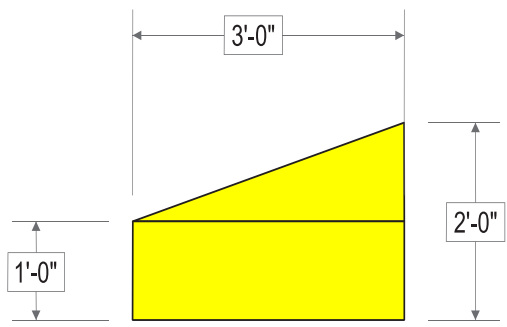
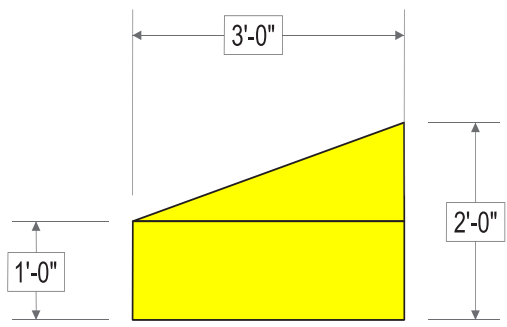
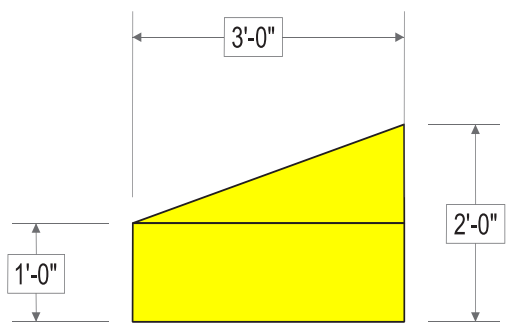


SCALE: 3/8"=1'-0"  
QTY.: (4X) FOUR

**= 3.7586805555556 Sq.Ft. ( 3.76 sq.ft. )**

The Breakdown is:

TOTAL	Number	Comment
Square Footage	3.7586805555556	Square Feet
Height in Feet	0.83333333333333	height feet + height inches
Length in Feet	4.5104166666667	length feet + length inches
Square Inches	541.25	Sq.In.
Height in Inches	10	height feet + height inches
Length in Inches	54.125	length feet + length inches



FABRIC AWNING  
CLOSEST MATCH TO  
BLUE 7463 C

RED  
PMS 032 C

WHITE





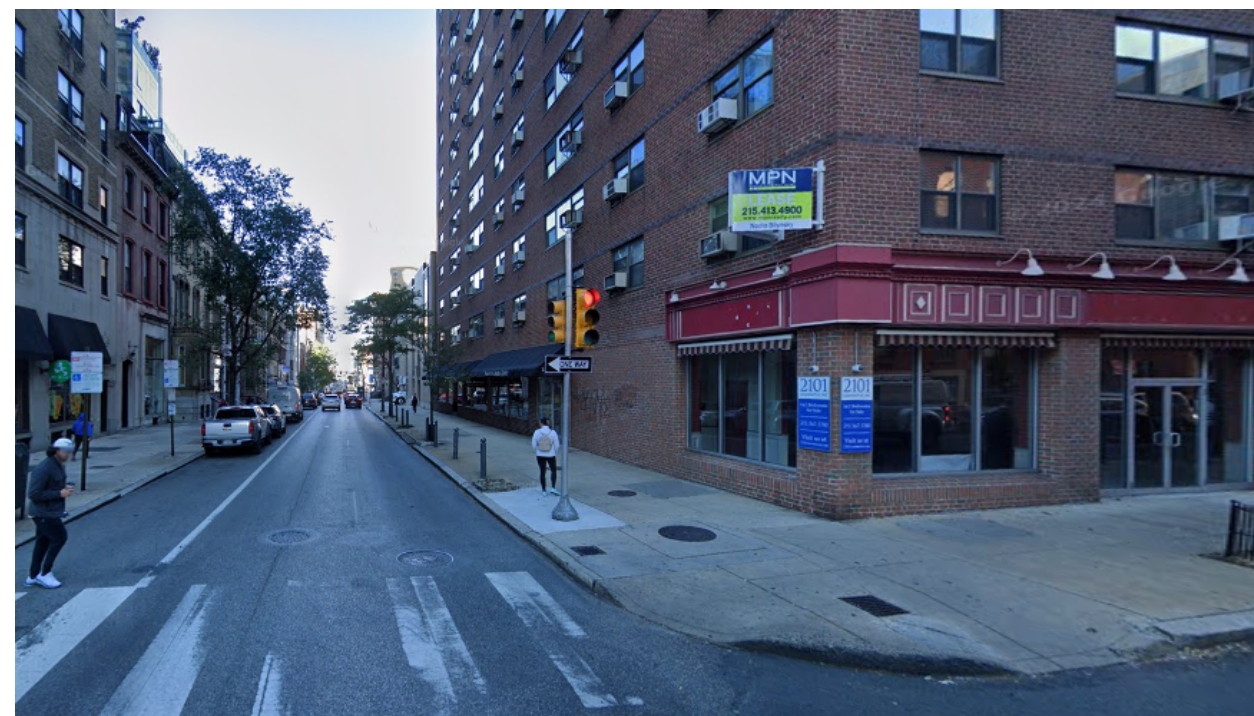
2101 Walnut St. looking North on 21st St



Looking Across Walnut South On 21st St.



Looking West on Walnut St.



Looking East on Walnut St.

