

EZ SIGNS, LLC
1839 Bustleton Pike
Feasterville, PA 19053
P: 1 (866) 349-5444
F: (215) 676-3269

EZ SIGNS LLC
1 (866) FIX-LIGHT

November 25, 2024

Re: Sign Install for Courtyard by Marriott
1419-27 ARCH ST

Scope of work:

SIGN A - Replace one (1) statically LED-lit accessory channel letter sign on raceway mounted and connected to existing power, 42.56 SF.

SIGN B1; B1; B2 - Replace three (3) NON-lit wall plaque panels w/ new NON-lit painted black S/F 8" x 1'-6" x 1" deep w/ waterjet cut aluminum letters painted white, 1.1 SF each.

SIGN C - Replace two (2) NON-lit canopy routed panels painted black w/ push-thru copy. Like-to-like, change of copy only. Sizes and location will remain the same; 11 SF each.

SIGN D - Replace one (1) NON-lit routed canopy panel painted black w/ push-thru copy. Like-to-like, change of copy only. Sizes and location will remain the same; 7.9 SF

SIGN E - Replace one (1) statically LED-lit accessory channel letters on existing Raceway and connect power supplies to existing power; 101.74 SF

SIGN F - Replace one (1) NON-lit wall panel sign 6 SF

SIGN G - Replace one (1) NON-lit wall panel sign 6 SF

Natalya Atroshyna
EZ SIGNS LLC
1839 Bustleton Pike
Feasterville, PA 19053
p. 267- 406 - 0273
e. permits@signsinstall.com



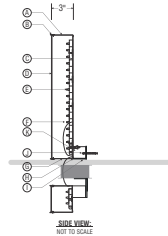
COURTYARD BY MARRIOTT

1421 Arch St
AKA
1419-27 ARCH ST
PHILADELPHIA, PA 19102



L.E.D. CHANNEL LETTER MOUNTING DETAIL (EXTERIOR)

- A. .050" x 3" PAINTED TO MATCH PMS 426 C GRAY SATIN FINISH
- B. 1" JEWELITE PAINTED TO MATCH PMS 426 C GRAY SATIN FINISH
- C. .050" ALUMINUM BACKS
- D. 3/16" #2447 WHITE POLYCARBONATE FACES
- E. WHITE GE TETRA MAX 7100K LEDS
- F. POWER CABLE LOW VOLTAGE SHIELDED W/ STRAIN RELIEF
STARTING FROM POWER SUPPLY THEN LETTER TO LETTER. (BEHIND FASCIA)
- G. 1/4" WEEP HOLES AS REQUIRED (FOR EXTERIOR INSTALLATION ONLY)
- H. SILICONE BEAD AROUND THE INSIDE OF RETURN AND BACK TO SEAL FROM WATER LEAKAGE
- I. L BRACKET ATTACHED TO RACEWAY FOR MOUNTING
- J. 1/2" SEALTITE CONDUIT RUNNING TO SECONDARY CONNECTION
* NOTE: GENERAL CONTRACTOR TO HAVE PRIMARY CONNECTION HOOKED UP
- K. STANDARD POWER SUPPLY HOUSE IN A 3" X 3" EXISTING RACEWAY & BY MARRIOTT W/ NEW RACEWAY & TUBING FOR MOUNTING (TBV)



*18" COURTYARD CHANNEL LETTERS ATTACHED TO EXISTING RACEWAY
8 11/16" BY MARRIOTT CHANNEL LETTERS ATTACHED TO NEW RACEWAY
UNDER GLASS CANOPY
RACEWAY TO HAVE L BRACKET FOR MOUNTING w/ TUBING (TBV)*

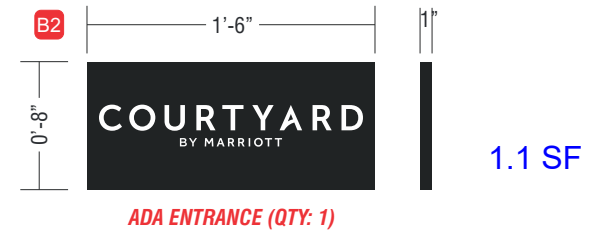
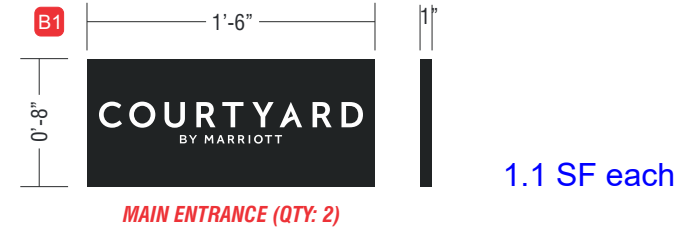
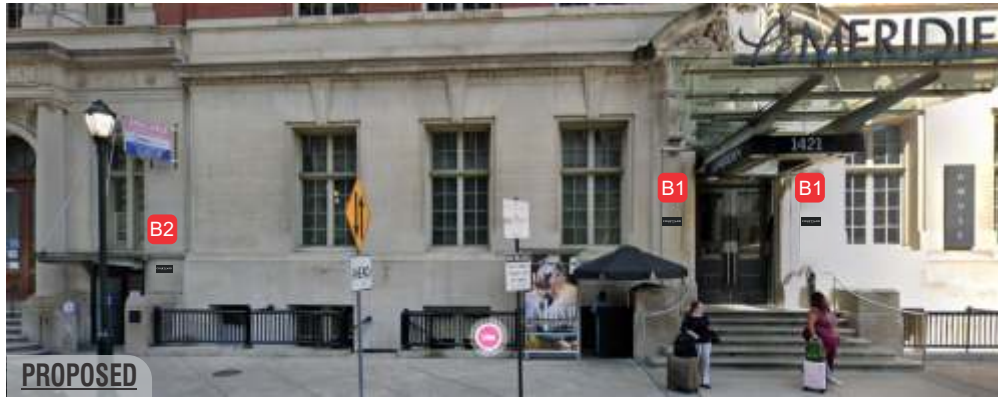
18" WHITE CHANNEL LETTERS RW MOUNT • 42.56 SQ FT / QTY: 1
1/4" = 1'-0"

Scope of work:

Replace one (1) statically LED-lit accessory channel letter sign on raceway mounted and connected to existing power.

BUILDING SIGNAGE

STANDARD SPECS ARE USED FOR THIS PROPOSAL



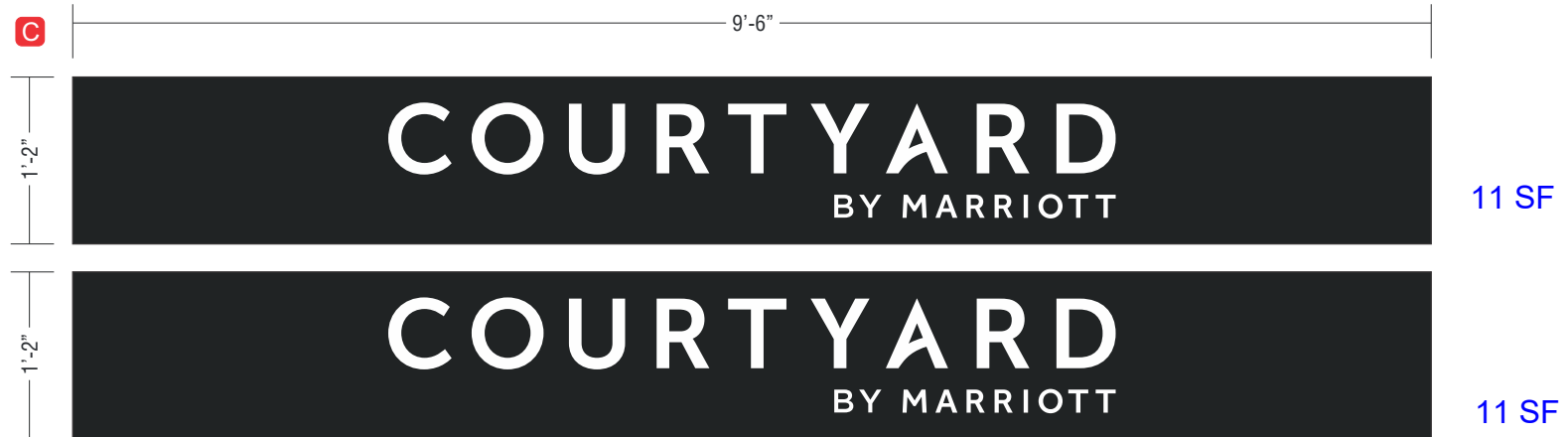
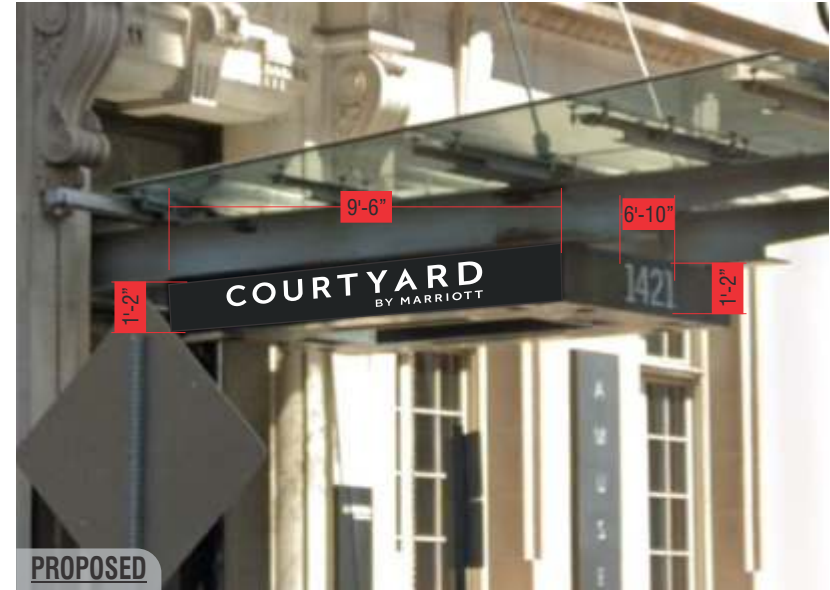
Scope of work:

Replace three (3) NON-lit wall plaque panels w/ new NON-lit painted black S/F 8" x 1'-6" x 1" deep w/ waterjet cut aluminum letters painted white.

8" X 1'-6" X 1" DEEP PANEL ROUTED & BACKED W/ FCO LETTERS / QTY: 1 OF EACH
1" = 1'-0"

BUILDING SIGNAGE

STANDARD SPECS ARE USED FOR THIS PROPOSAL



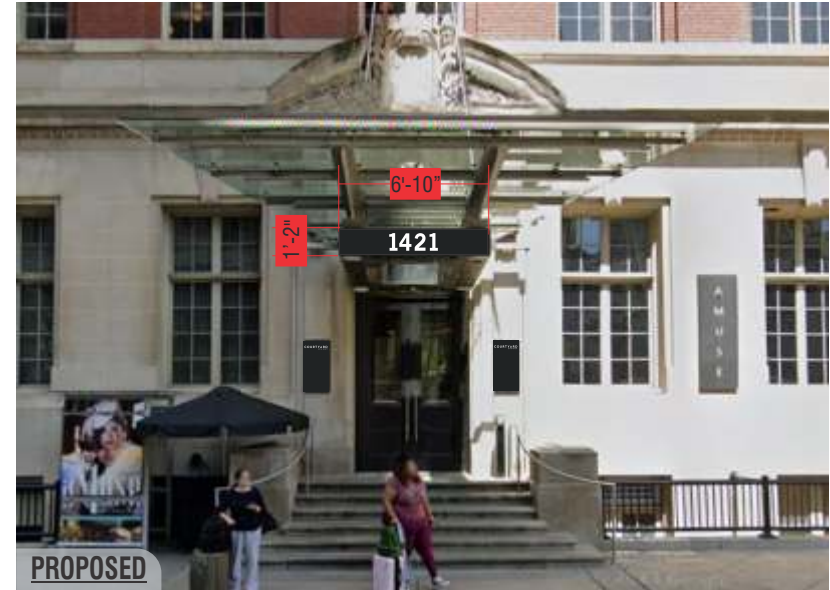
Scope of work:

Replace two (2) NON-lit canopy routed panels painted black w/ push-thru copy.
Like-to-like, change of copy only. Sizes and location will remain the same.

1'-2" X 9'-6" ROUTED PANELS w/ PUSH-THRU COPY / QTY: 2
3/4" = 1'-0"

BUILDING SIGNAGE

STANDARD SPECS ARE USED FOR THIS PROPOSAL



7.9 SQ FT

Scope of work:

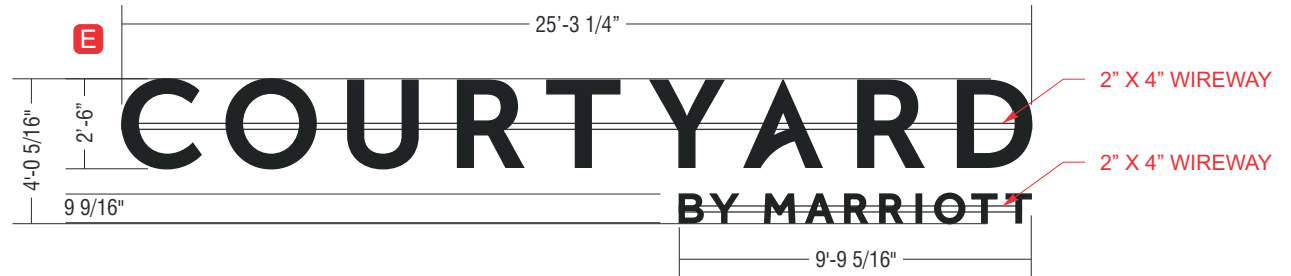
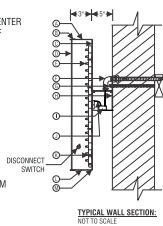
Replace one (1) NON-lit routed canopy panel painted black w/ push-thru copy.
Like-to-like, change of copy only. Sizes and location will remain the same

1'-2" X 6'-10" ROUTED PANELS w/ PUSH-THRU COPY / QTY: 1
3/4" = 1'-0"



L.E.D. CHANNEL LETTER MOUNTING DETAIL (EXTERIOR)

- A. .050" x 3" PAINTED TO MATCH PMS 426 C GRAY, SATIN FINISH
- B. 1" JEWELITE PAINTED TO MATCH PMS 426 C GRAY, SATIN FINISH
- C. .050" ALUMINUM BACKS
- D. 3/16" #2447 WHITE POLYCARBONATE FACES W/ PERFORATED VINYL TO MATCH PMS 426 C GRAY, SATIN FINISH
- F. 1/2" SEALITE CONDUIT RUNNING TO SECONDARY CONNECTION
*NOTE: GENERAL CONTRACTOR TO HAVE PRIMARY CONNECTION HOOKED UP
- G. 3/8" THREADED RODS WITH 2" x 4" WOOD BLOCKING AS REQUIRED TO MOUNT RACEWAY TO WALL
- H. 2" x 9" x 3/16" ALUMINUM MOUNTING BRACKETS AS REQ'D - CENTER TO CENTER DIMENSIONS NOT TO EXCEED 6'-0" OF UNBRACED LENGTHS
- I. STANDARD POWER SUPPLY HOUSED IN A 2" X 4" WIREWAY PAINTED TBD
- J. POWER CABLE STARTING FROM POWER SUPPLY THEN LETTER TO LETTER
- K. PLASTIC MOUNTING CLIPS AS REQ'D
- L. 1/4" WEEP HOLES AS REQUIRED
- M. SILICONE BEAD AROUND THE INSIDE OF RETURN AND BACK TO SEAL FROM WATER LEAKAGE



Scope of work:

Replace one (1) statically LED-lit accessory channel letters on existing Raceway and connect power supplies to existing power.

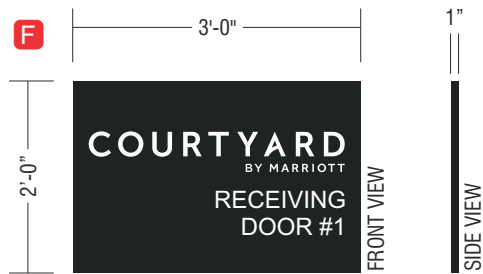


Detail D

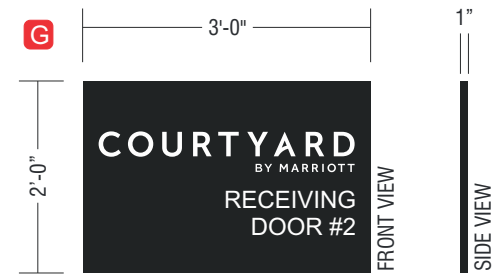
30" WIREWAY MOUNT CHANNEL LETTERS GRAY DAY/WHITE NIGHT • 101.74 SQ FT / QTY: 1
3/16" = 1'-0"

BUILDING SIGNAGE

STANDARD SPECS ARE USED FOR THIS PROPOSAL



6 SF



6 SF

2' x 3' x 1" DEEP ALUMINUM WALL PANEL PAINTED BLACK W/ FCO LETTERS/ QTY: 1 OF EACH

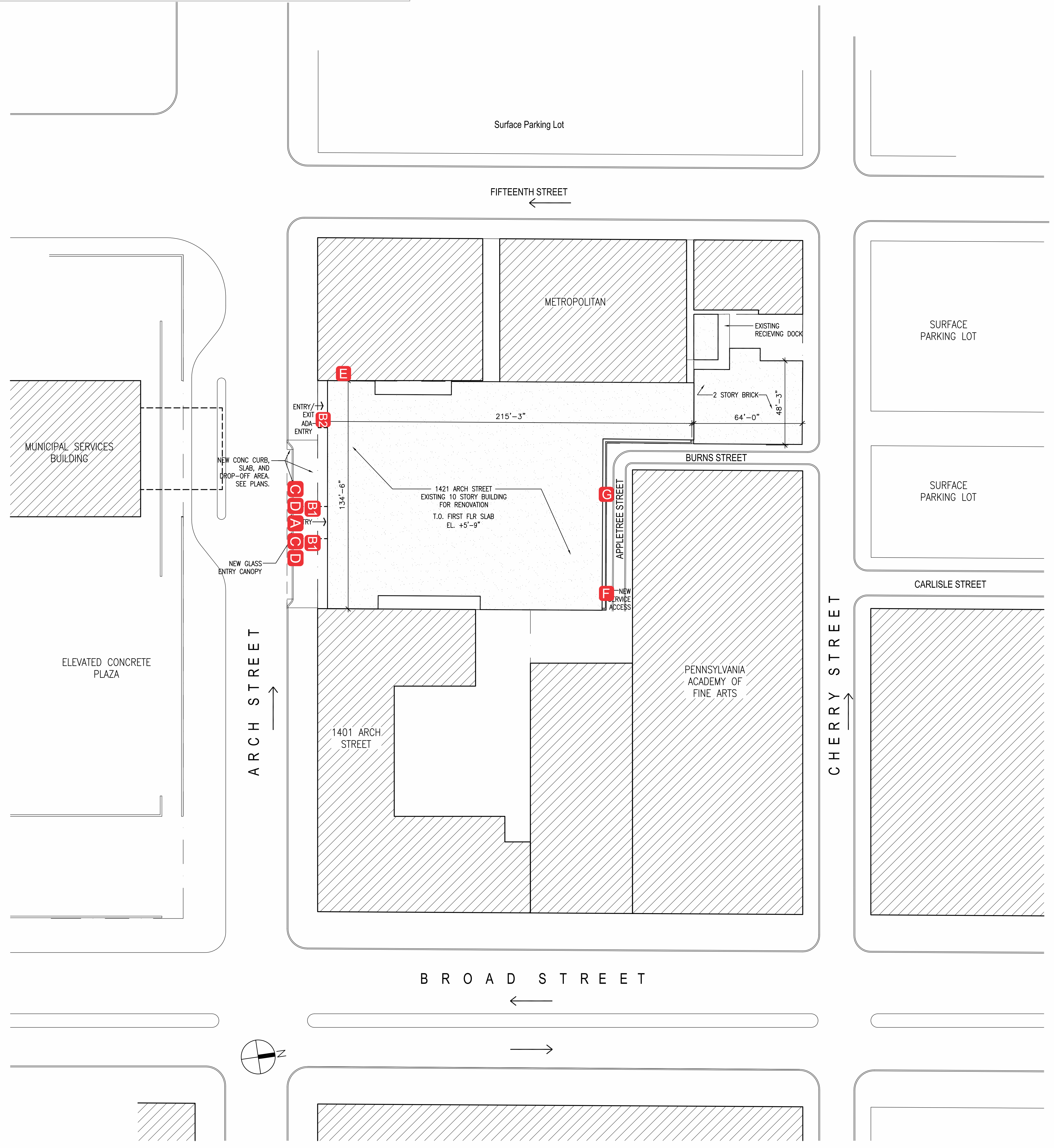
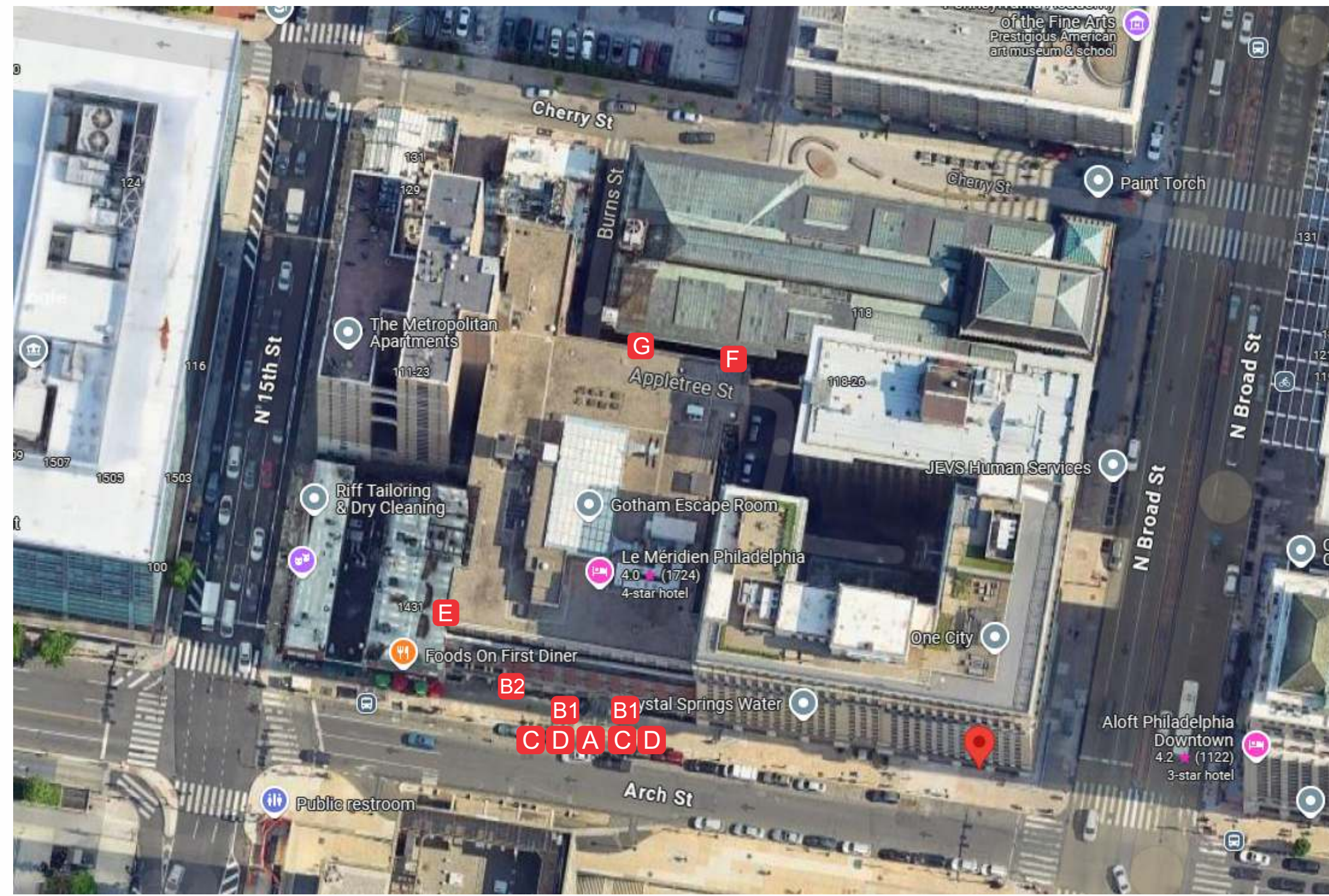
1/2" = 1'-0"

Scope of work:

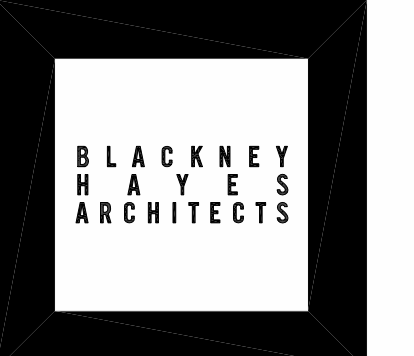
1. Remove existing wall NON-lit plaques and replace w/ new panel painted black / S/F 2' x 3' x 1" Deep w/ Waterjet cut aluminum letters painted white.

PROPOSED SIGNS:

- A** 18" WHITE CHANNEL LETTERS RW MOUNT • 42.56 SQ FT
- B1** 8" X 1'-6" X 1" DEEP PANEL ROUTED & BACKED W/ FCO LETTERS / QTY: 2 OF EACH
- B2** 8" X 1'-6" X 1" DEEP PANEL ROUTED & BACKED W/ FCO LETTERS / QTY: 1 OF EACH
- C** 1'-2" X 9'-6" ROUTED PANELS w/ PUSH-THRU COPY QTY:2
- D** 1'-2" X 6'-10" ROUTED PANELS w/ PUSH-THRU COPY
- E** 30" WIREWAY MOUNT CHANNEL LETTERS • 101.74 SQ FT
- F** 2' x 3' x 1" DEEP ALUMINUM WALL PANEL PAINTED BLACK W/ FCO LETTERS/ QTY: 1 OF EACH
- G** 2' x 3' x 1" DEEP ALUMINUM WALL PANEL PAINTED BLACK W/ FCO LETTERS/ QTY: 1 OF EACH



1 SITE PLAN
SCALE: 1" = 30'-0"



150 S. Independence Mall West
Suite 1200
Philadelphia, Pennsylvania 19106
phone: 215.829.0922
facsimile: 215.829.0596

Associate Architect:

SGRA

STUART G. ROSENBERG
ARCHITECTS, P.C.
1617 Walnut Street
Philadelphia, Pennsylvania 19103
phone: 215.564.1007
facsimile: 215.564.3311

Owner:
Development Services Group
866 Ridgeway Loop
Suite 100
Memphis, TN 38120
phone: 901.747.3946

Project Team

Project

The Hotel at
1421 Arch Street
Philadelphia, PA

Sheet Title

Site Plan

Seal

Warning: Actual Conditions may vary from conditions shown on this drawing. Confirm all information in the field before proceeding with any work and notify the Architect in writing if a variation is discovered.

This drawing is an instrument of professional services and shall not be modified, copied or used for another project without the written consent of the Architect.

Release Date	Comments	
5/30/2007	PROGRESS SET	
6/1/2007	HISTORICAL PROGRESS SET	
6/5/2007	PROGRESS SET	
6/13/2007	HISTORICAL SET	
7/13/2007	PROGRESS SET	
8/07/2007	PRICING SET	
10/16/07	PRICING REVISION	
11/21/07	CONSTRUCTION SET	
1/7/08	FINAL CONSTRUCTION SET	
8/14/09	RECORD SET	

BHA Job Number: 06.118

Scale: AS NOTED

Drawn By: YG

Checked By: DCJ

Approved By:

Sheet No.

SP1