

BROWN EXPEDITING SERVICES

December 10, 2024

Philadelphia Art Commission
1515 Arch Street, 13th Floor
Philadelphia, PA 19102

Re: Movement
340 N. 10th Street

To Whom it May Concern:

Please review this package for two illuminated flat wall signs and one D/S projecting sign, accessory to this yoga, fitness and wall climbing business.

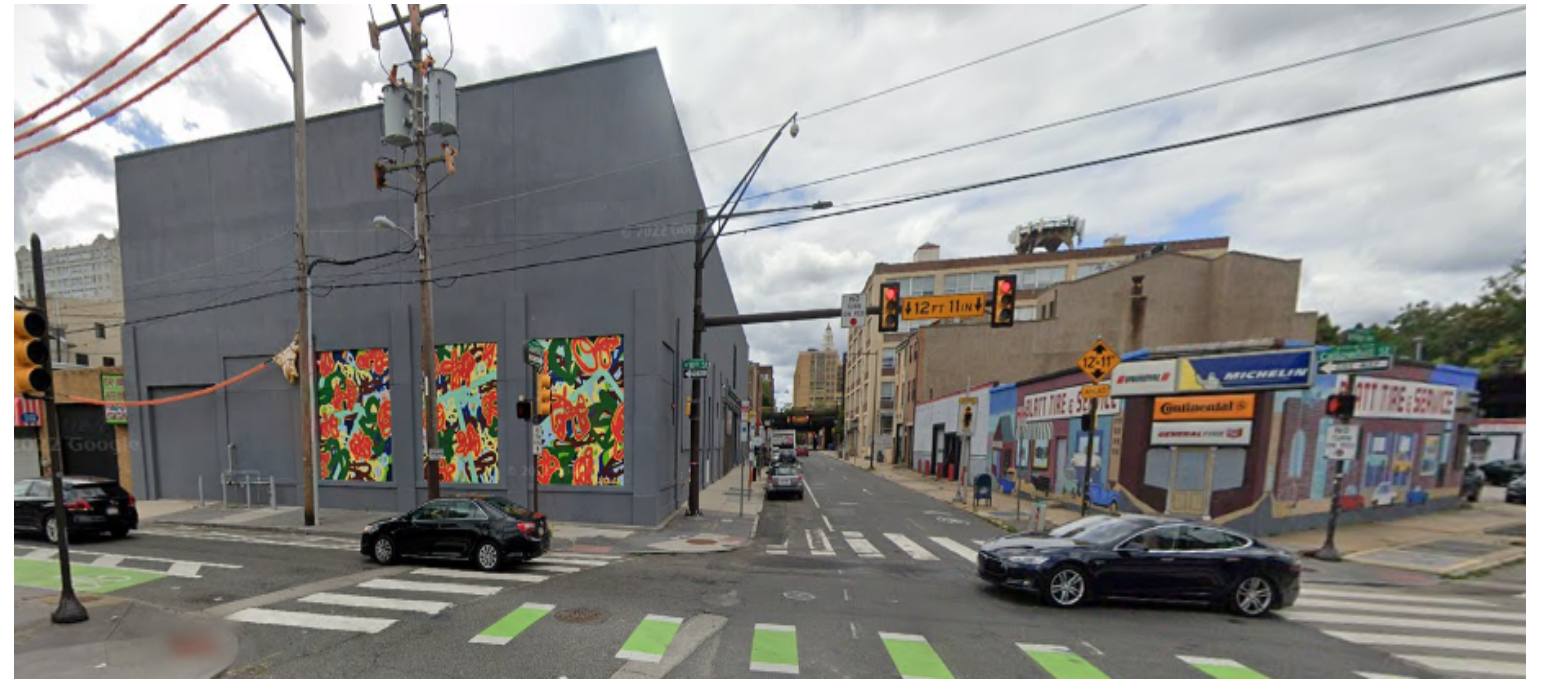
If you need any further information, please contact me.

Thank you,
Linda

340 N 10th STREET



WEST ON CALLOWHILL STREET



LOOKING SOUTH ON 10TH STREET



NORTH ON 10TH STREET





Illustration View

Not To Scale

CALLOWHILL Sign 1.2



Illustration View

Not To Scale

10th St - Sign 1.1



Project:
 Movement
 1010 Callowhill St.,
 Philadelphia, CA 19123

Client:
 el Cap, LLC - Movement
 Contact: Shel Holguin

Filename:
 23665 Movement - Callowhill R11

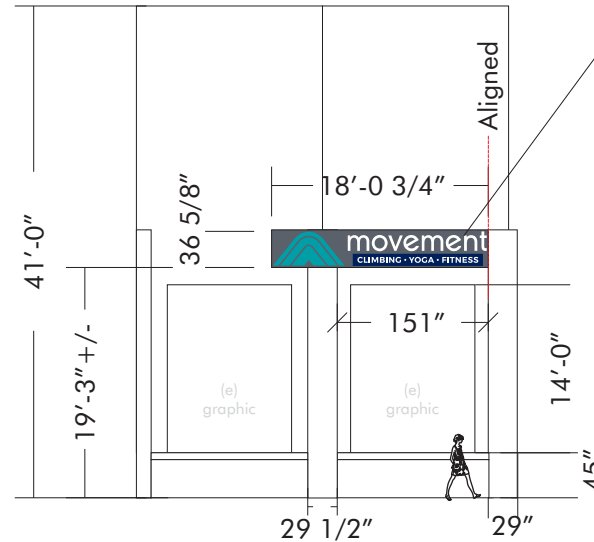
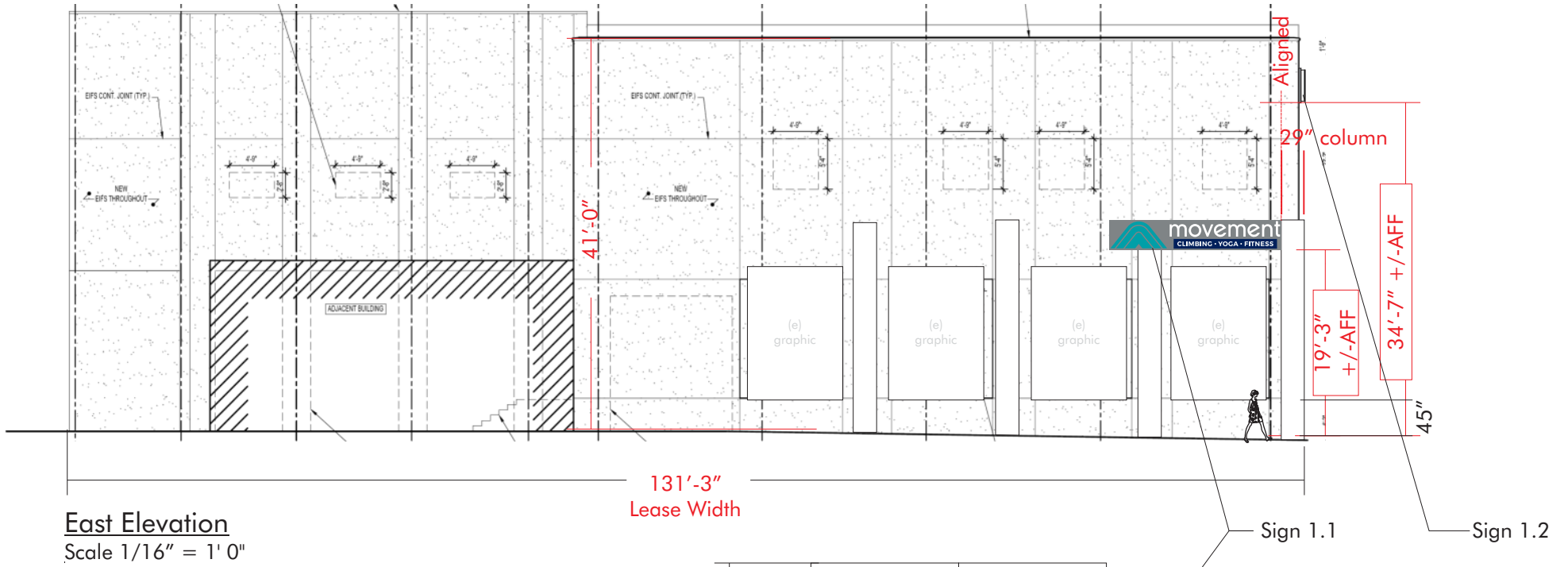
Revisions:
 Initial Design LM 03/01/2024
 R5 JF 8/20/2024
 R6 JD 8/21/2024
 R10 DF 11/15/2024
 Page 1 of 15



This sign is intended to be installed in accordance with the requirements of Article 600 of the National Electrical Code and/or other Applicable local codes. This includes proper grounding and bonding of the sign. The location of the disconnect switch after installation shall comply with article 600.6 (A) (1) of the national electric code

SOUTHWEST SIGN CO.

1852 POMONA RD., CORONA, CA 92880
 P: 951-734-6275 F: 951-735-9667 CSL#724929
 WWW.SOUTHWESTSIGN.COM



Project:
 Movement
 1010 Callowhill St.,
 Philadelphia, CA 19123

Client:
 el Cap, LLC. - Movement
 Contact: Shel Holquin

Filename:
 23665 Movement - Callowhill R11

Revisions:

Initial Design LM	03/01/2024
R5 JF	8/20/2024
R6 JD	8/21/2024
R10 DF	11/15/2024

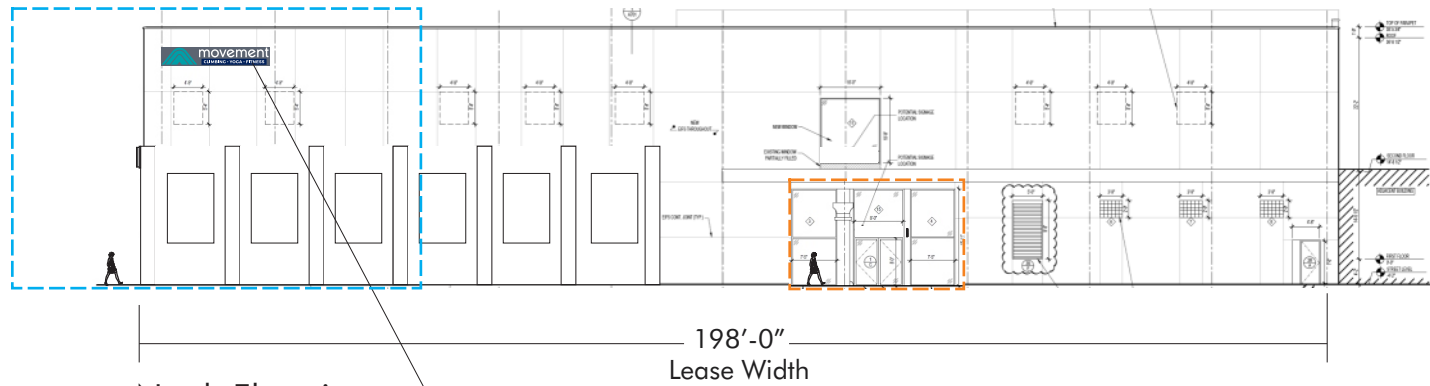
Page 2 of 15



This sign is intended to be installed in accordance with the requirements of Article 600 of the National Electrical Code and/or other Applicable local codes. This includes proper grounding and bonding of the sign. The location of the disconnect switch after installation shall comply with article 600.6(A)(1) of the national electric code

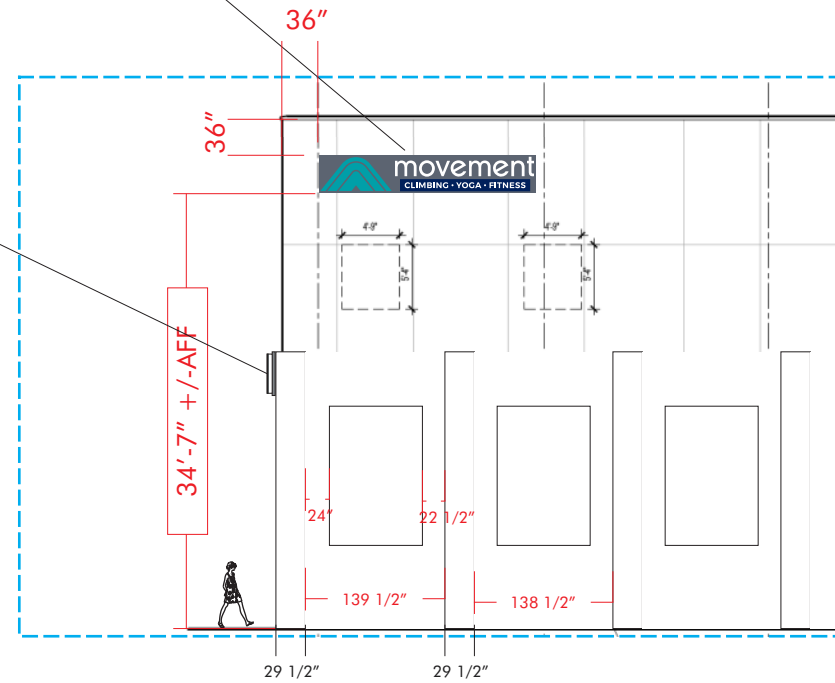
SOUTHWEST SIGN CO.

1852 POMONA RD., CORONA, CA 92880
 P: 951-734-6275 F: 951-735-9667 CSL#724929
 WWW.SOUTHWESTSIGN.COM



North Elevation
Scale 1/32" = 1' 0"

Sign 1.2



Sign 1.1

Enlarged North Elevation
Scale 1/16" = 1' 0"



Project:
Movement
1010 Callowhill St.,
Philadelphia, CA 19123

Client:
el Cap, LLC. - Movement
Contact: Shel Holguin

Filename:
23665 Movement - Callowhill R11

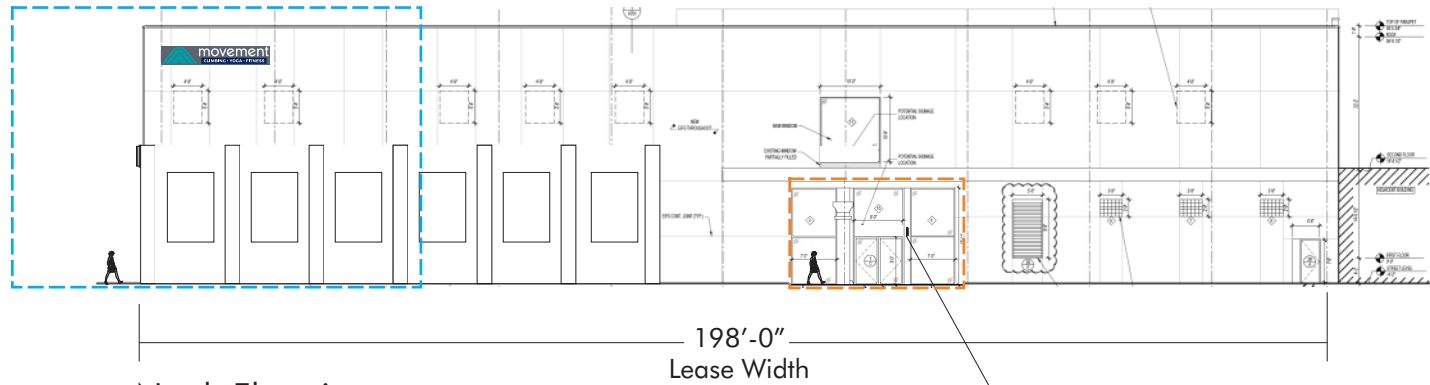
Revisions:
Initial Design LM 03/01/2024
R5 JF 8/20/2024
R6 JD 8/21/2024
R10 DF 11/15/2024
Page 3 of 15



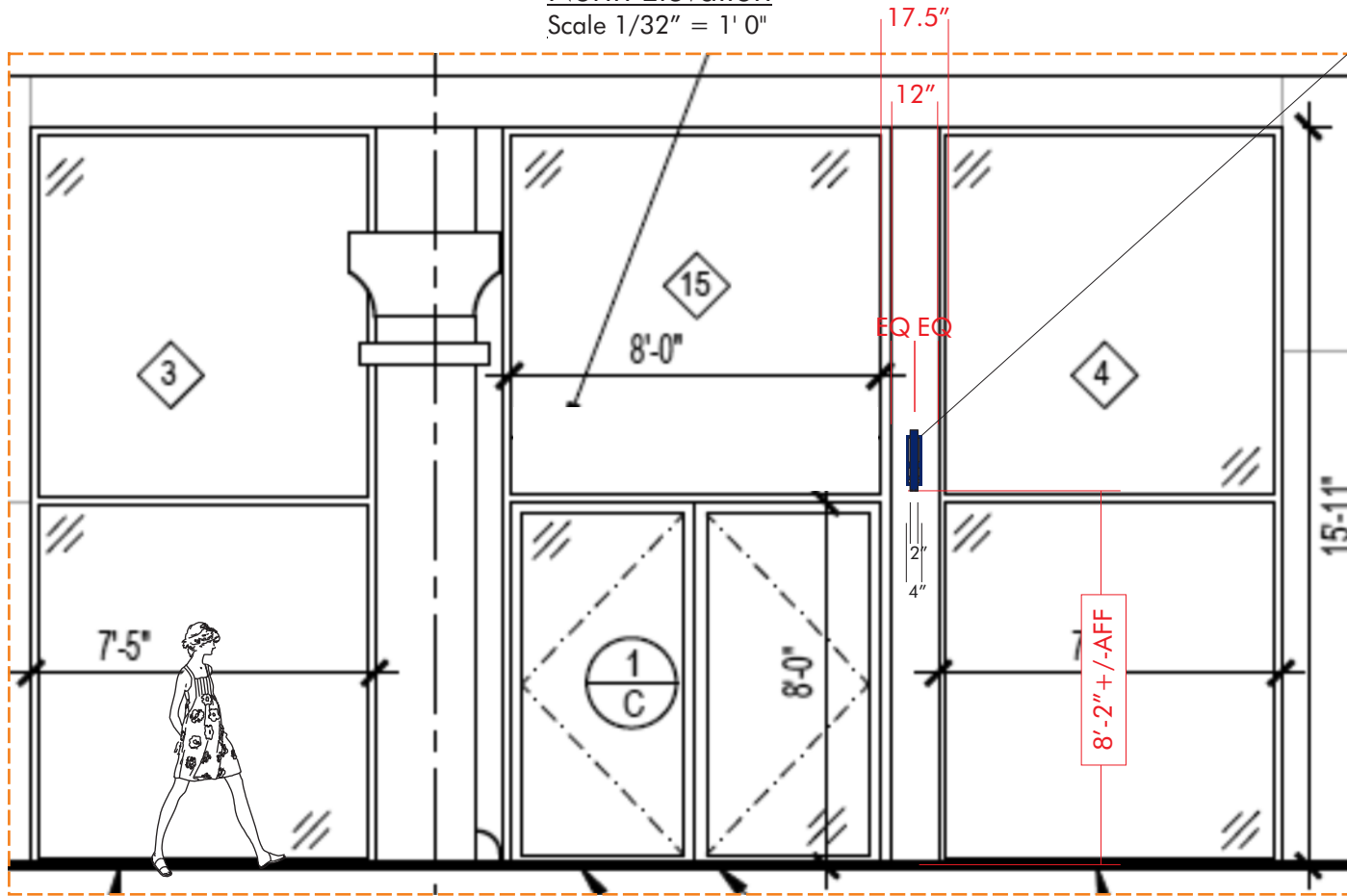
This sign is intended to be installed in accordance with the requirements of Article 600 of the National Electrical Code and/or other Applicable local codes. This includes proper grounding and bonding of the sign. The location of the disconnect switch after installation shall comply with article 600.6(A)(1) of the national electric code

SOUTHWEST SIGN CO.

1852 POMONA RD., CORONA, CA 92880
P: 951-734-6275 F: 951-735-9667 CSL#724929
WWW.SOUTHWESTSIGN.COM



North Elevation
Scale 1/32" = 1' 0"



Blade 2.1

Enlarged North Elevation @ Entry
Scale 1/4" = 1' 0"



Project:
Movement
1010 Callowhill St.,
Philadelphia, CA 19123

Client:
el Cap, LLC. - Movement
Contact: Shel Holquin

Filename:
23665 Movement - Callowhill R11

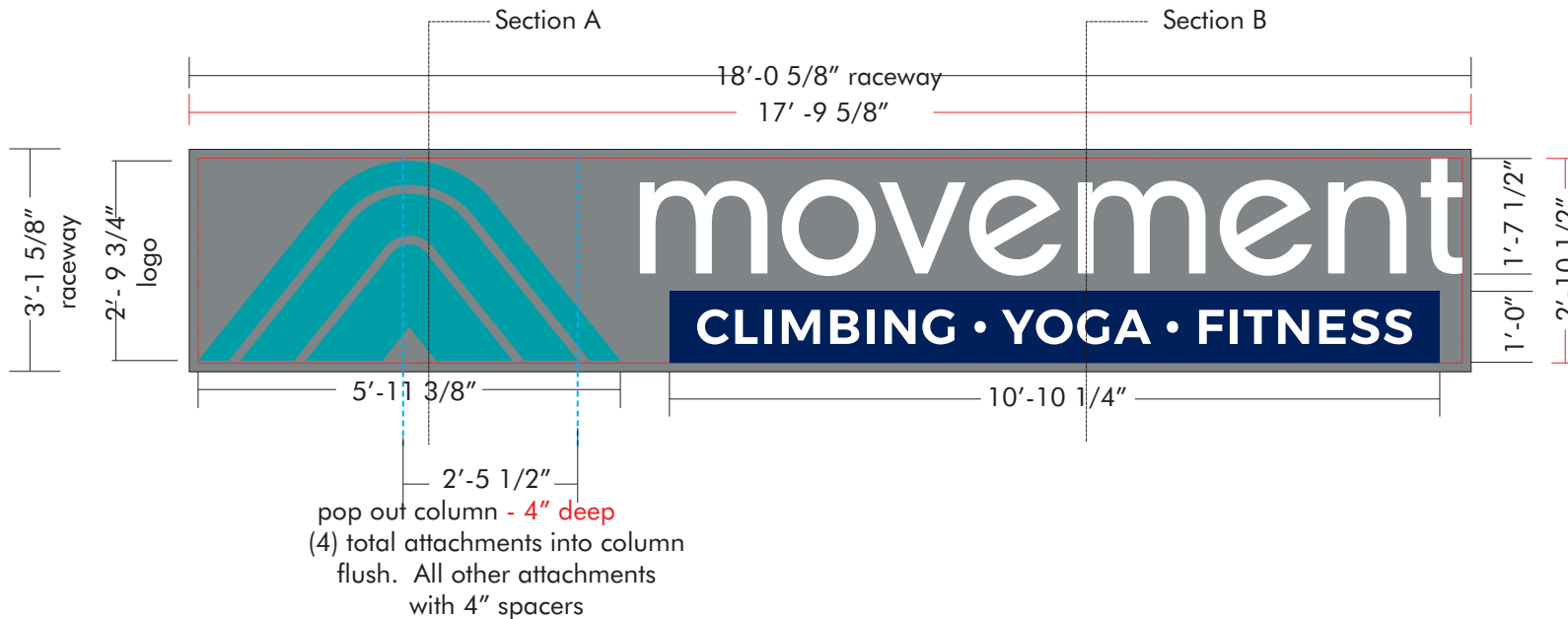
Revisions:
Initial Design LM 03/01/2024
R5 JF 8/20/2024
R6 JD 8/21/2024
R10 DF 11/15/2024
Page 4 of 15



This sign is intended to be installed in accordance with the requirements of Article 600 of the National Electrical Code and/or other Applicable local codes. This includes proper grounding and bonding of the sign. The location of the disconnect switch after installation shall comply with article 600.6 (A) (1) of the national electric code

SOUTHWEST SIGN CO.

1852 POMONA RD., CORONA, CA 92880
P: 951-734-6275 F: 951-735-9667 CSL#724929
WWW.SOUTHWESTSIGN.COM



Sign 1.1 Detail - 51.18 Square Feet, per Each

Scale 3/8" = 1' 0"

Qty. (1) set:

3-piece logo shape with acrylic faces with vinyl overlay and LED internal illumination, white returns and trim cap.

Fabricated alum. plex faced channel lettering with LED internal illumination. Copy to read: movement

Fabricated alum. cabinet with retainer, Lexan face with vinyl graphics, LED internal illumination.

Copy to read: CLIMBING * YOGA * FITNESS

Letters mounted to raceway painted P2 to match wall color.

Primary power provided to wall location by others.

M1 White prefinished returns/white trimcap

V1 3M Trans. Teal Green 3630-246 > LOGO FACES only

P1 V2 PMS 281 - Retainers
/3M 3630-36 Blue

P3 Color to match exterior wall: PTM SW#7074 "Software"



Project:
Movement
1010 Callowhill St.,
Philadelphia, CA 19123

Client:
el Cap, LLC. - Movement
Contact: Shel Holquin
Filename:
23665 Movement - Callowhill R11

Revisions:
Initial Design LM 03/01/2024
R5 JF 8/20/2024
R6 JD 8/21/2024
R10 DF 11/15/2024
Page 5 of 15



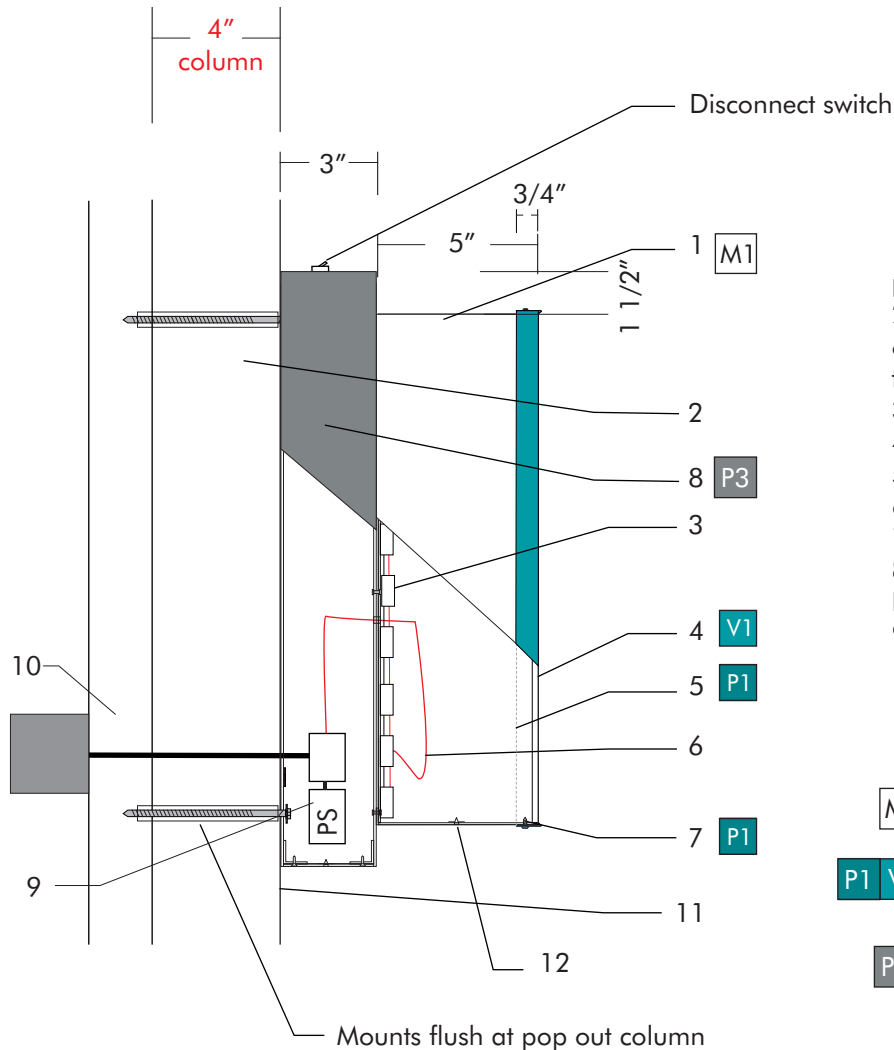
This sign is intended to be installed in accordance with the requirements of Article 600 of the National Electrical Code and/or other Applicable local codes. This includes proper grounding and bonding of the sign. The location of the disconnect switch after installation shall comply with article 600.6(A)(1) of the national electric code

SOUTHWEST SIGN CO.

1852 POMONA RD., CORONA, CA 92880

P: 951-734-6275 F: 951-735-9667 CSL#724929

WWW.SOUTHWESTSIGN.COM



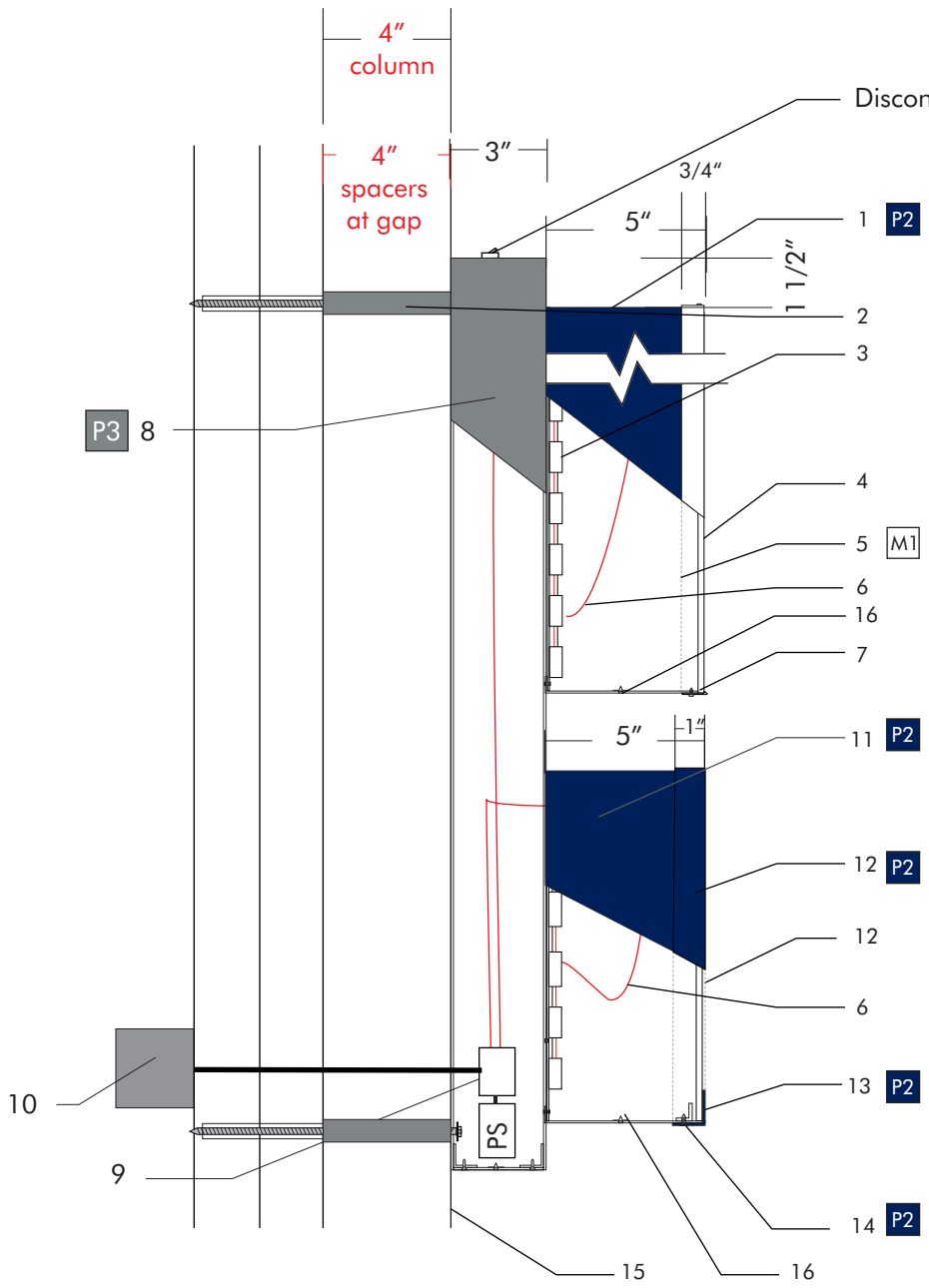
1. Aluminum face-lit channel logos with riveted alum. back and white pre-finished returns riveted to face of raceway (10) per logo piece, typ
2. 1/4 lag and shields mounted flush at column (4) total & (8) mount locations with 4" spacers painted P3. typ. 3" embed min. See column location at detail page.
3. Internal LED illumination 4000K.
4. 3/16" white lexan faces with vinyl graphics V1.
5. 1" trimcap P1 finish.
6. Low voltage leads to raceway behind
7. Pan head screws (12) total, typ. for trimcap. PTM screws P1.
8. 3" deep fabricated alum. raceway painted P3 with Removable lid for access to PS with (4) #8 countersunk screws.
9. Internal power supply in raceway with disconnect switch
10. Incoming primary power by others
11. Wall - Stucco (Dryvit) concrete/cinder blocks
12. Weep holes with baffles

M1 White prefinished returns/white trimcap

P1 V1 3M Trans. Teal Green 3630-246 PMS 321C > LOGO FACES only

P3 Color to match exterior wall: PTM SW#7074 "Software"

Sign 1.1 Section A Detail
Scale 2" = 1' 0"



1. 5" aluminum face-lit channel letters with riveted alum. back and P2 returns. riveted to face of raceway (4) per letter, typ
2. 1/4 lag and shields mounted flush at column (4) total & (8) mount locations with 4" spacers painted P3. typ. 3" embed min. See column location at detail page.
3. Internal LED illumination 4000K.
4. 3/16" white plex faces.
5. 3/4" white trim-cap for letters
6. Low voltage leads to raceway behind
7. Pan head set screws, mounted flush and painted to match return (4) per letter, typ. for all channel letters
8. 3" deep fabricated alum. raceway painted P3 with Removable lid for access to PS with (4) #8 countersunk screws.
9. Internal power supply in raceway with disconnect switch
10. Incoming primary power by others
11. Fabricated aluminum tagline box with P2 finish riveted to face of raceway (10) total tagline, typ
12. 3/16" white lexan face with V1 graphics
13. 1" alum. retainer painted P2
14. #8 countersunk screws (12) total for retainer, PTM screws P2
15. Wall -Stucco (Dryvit) concrete/cinder blocks
16. Weep holes with baffles

- M1 White trimcap
- P2 V2 PMS 281 - Retainers /3M 3630-36 Blue
- P3 Color to match exterior wall: PTM SW#7074 "Software"

Sign 1.1 Section B Detail
Scale 2" = 1' 0"



Project:
 Movement
 1010 Callowhill St.,
 Philadelphia, CA 19123

Client:
 el Cap, LLC. - Movement
 Contact: Shel Holguin

Filename:
 23665 Movement - Callowhill R11

Revisions:

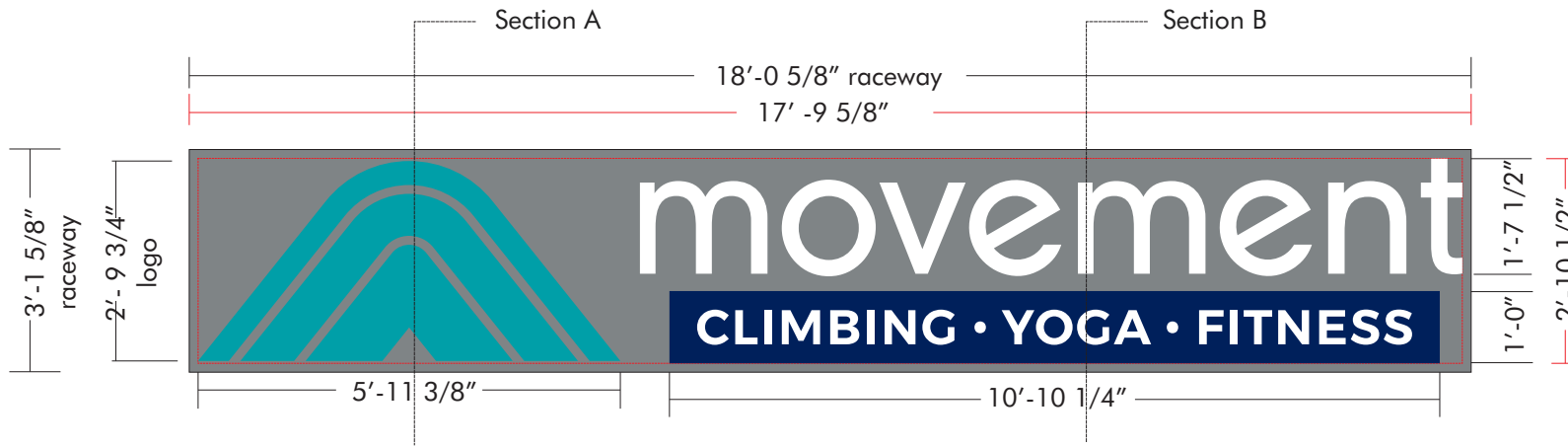
Initial Design LM	03/01/2024
R5 JF	8/20/2024
R6 JD	8/21/2024
R10 DF	11/15/2024

Page 7 of 15



This sign is intended to be installed in accordance with the requirements of Article 600 of the National Electrical Code and/or other Applicable local codes. This includes proper grounding and bonding of the sign. The location of the disconnect switch after installation shall comply with article 600.6(A)(1) of the national electric code

SOUTHWEST SIGN CO.
 1852 POMONA RD., CORONA, CA 92880
 P: 951-734-6275 F: 951-735-9667 CSL#724929
 WWW.SOUTHWESTSIGN.COM



Sign 1.2 Detail - 51.18 Square Feet

Scale 3/8" = 1' 0"

Qty. (1) set of:

3-piece logo shape with acrylic faces with vinyl overlay and LED internal illumination, white returns and trim cap.

Fabricated alum. plex faced channel lettering with LED internal illumination. Copy to read: movement

Fabricated alum. cabinet with retainer, Lexan face with vinyl graphics, LED internal illumination.

Copy to read: CLIMBING * YOGA * FITNESS

Letters mounted to raceway painted P2 to match wall color.

Primary power provided to wall location by others.

M1 White prefinished returns/white trimcap

V1 3M Trans. Teal Green 3630-246 > LOGO FACES only

P1 V2 PMS 281 - Retainers
/3M 3630-36 Blue

P3 Color to match exterior wall: PTM SW#7074 "Software"



Project:
Movement
1010 Callowhill St.,
Philadelphia, CA 19123

Client:
el Cap, LLC. - Movement
Contact: Shel Holguin
Filename:
23665 Movement - Callowhill R11

Revisions:
Initial Design LM 03/01/2024
R5 JF 8/20/2024
R6 JD 8/21/2024
R10 DF 11/15/2024
Page 8 of 15



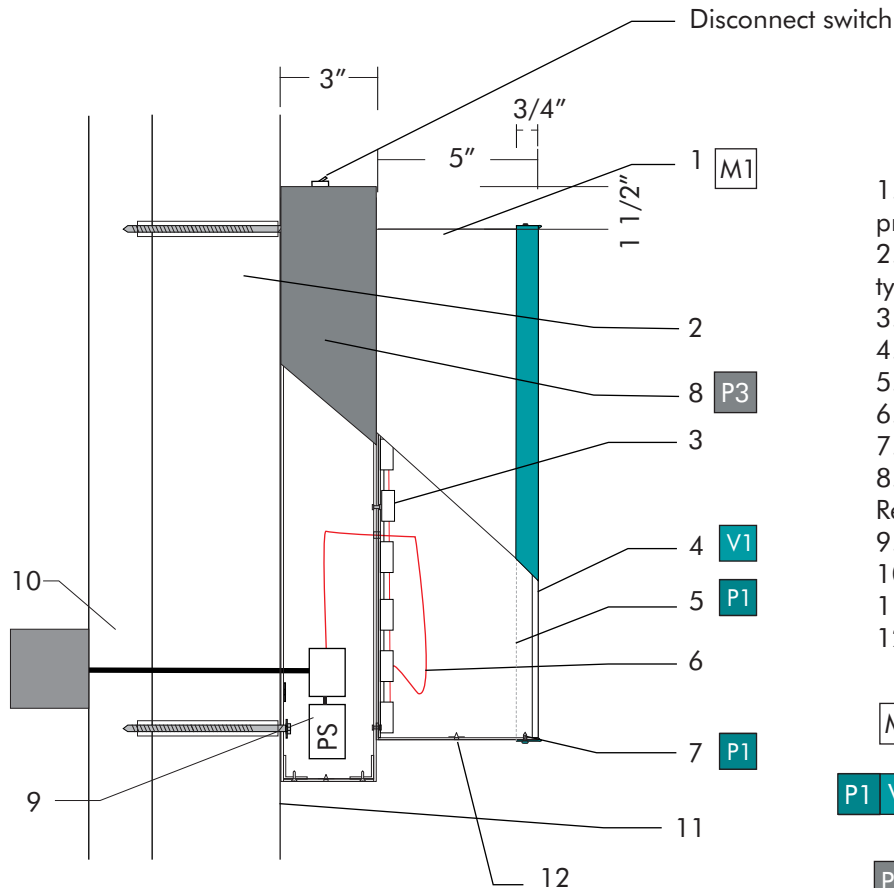
This sign is intended to be installed in accordance with the requirements of Article 600 of the National Electrical Code and/or other Applicable local codes. This includes proper grounding and bonding of the sign. The location of the disconnect switch after installation shall comply with article 600.6(A)(1) of the national electric code

SOUTHWEST SIGN CO.

1852 POMONA RD., CORONA, CA 92880

P: 951-734-6275 F: 951-735-9667 CSL#724929

WWW.SOUTHWESTSIGN.COM



1. Aluminum face-lit channel logos with riveted alum. back and white pre-finished returns riveted to face of raceway (10) per logo piece, typ
2. 1/4 lag and shields mounted flush at wall (12) total typ. 3" embed min.
3. Internal LED illumination 4000K.
4. 3/16" white lexan faces with vinyl graphics V1.
5. 1" trimcap P1 finish.
6. Low voltage leads to raceway behind
7. Pan head screws (12) total, typ. for trimcap. PTM screws P1.
8. 3" deep fabricated alum. raceway painted P3 with Removable lid for access to PS with (4) #8 countersunk screws.
9. Internal power supply in raceway with disconnect switch
10. Incoming primary power by others
11. Wall - Stucco (Dryvit) concrete/cinder blocks
12. Weep holes with baffles

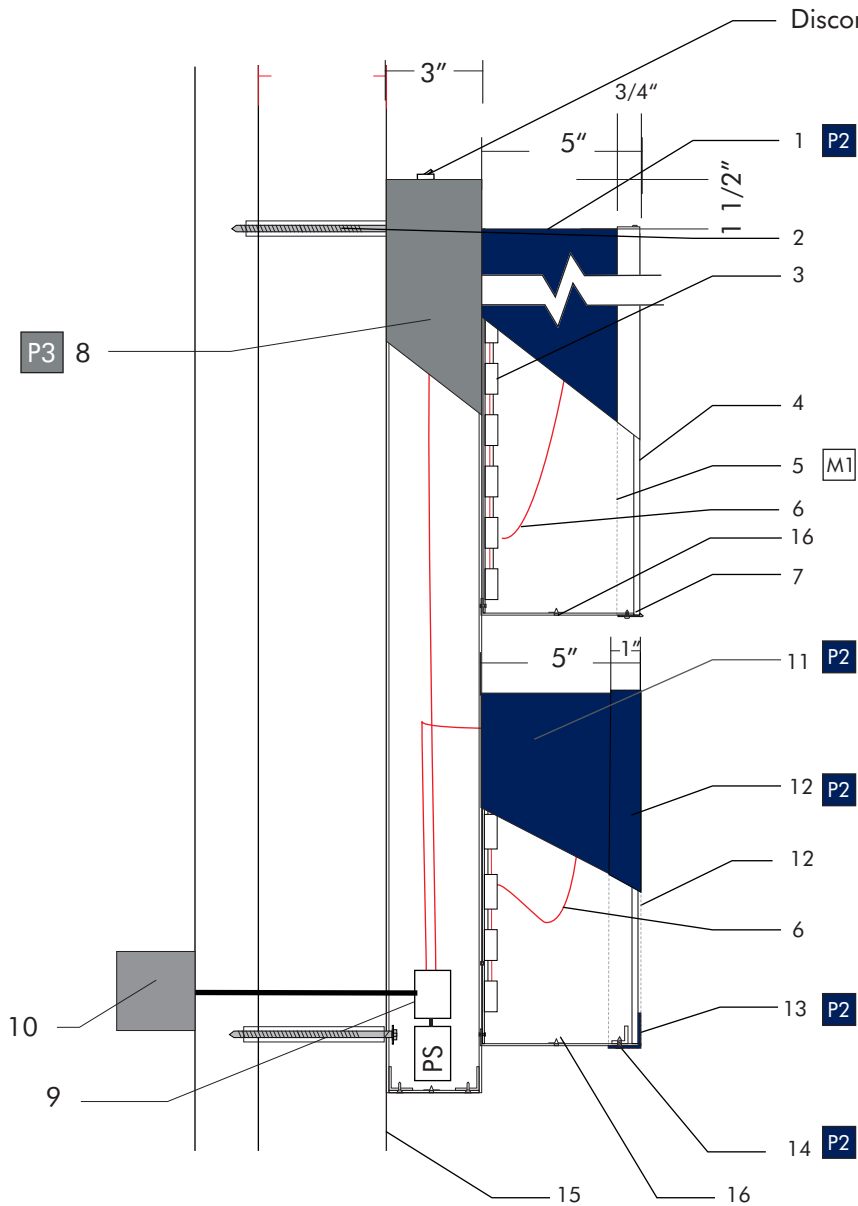
M1 White prefinished returns/white trimcap

P1 V1 3M Trans. Teal Green 3630-246 > LOGO FACES only
PMS 321C

P3 Color to match exterior wall: PTM SW#7074 "Software"

Sign 1.2 Section A Detail

Scale 2" = 1' 0"



1. 5" aluminum face-lit channel letters with riveted alum. back and P2 returns. riveted to face of raceway (4) per letter, typ
2. 1/4 lag and shields mounted flush at wall (12) total typ. 3" embed min.
3. Internal LED illumination 4000K.
4. 3/16" white plex faces.
5. 3/4" white trim-cap for letters
6. Low voltage leads to raceway behind
7. Pan head set screws, mounted flush and painted to match return (4) per letter, typ. for all channel letters
8. 3" deep fabricated alum. raceway painted P3 with Removable lid for access to PS with (4) #8 countersunk screws.
9. Internal power supply in raceway with disconnect switch
10. Incoming primary power by others
11. Fabricated aluminum tagline box with P2 finish riveted to face of raceway (10) total tagline, typ
12. 3/16" white lexan face with V1 graphics
13. 1" alum. retainer painted P2
14. #8 countersunk screws (12) total for retainer, PTM screws P2
15. Wall -Stucco (Dryvit) concrete/cinder blocks
16. Weep holes with baffles

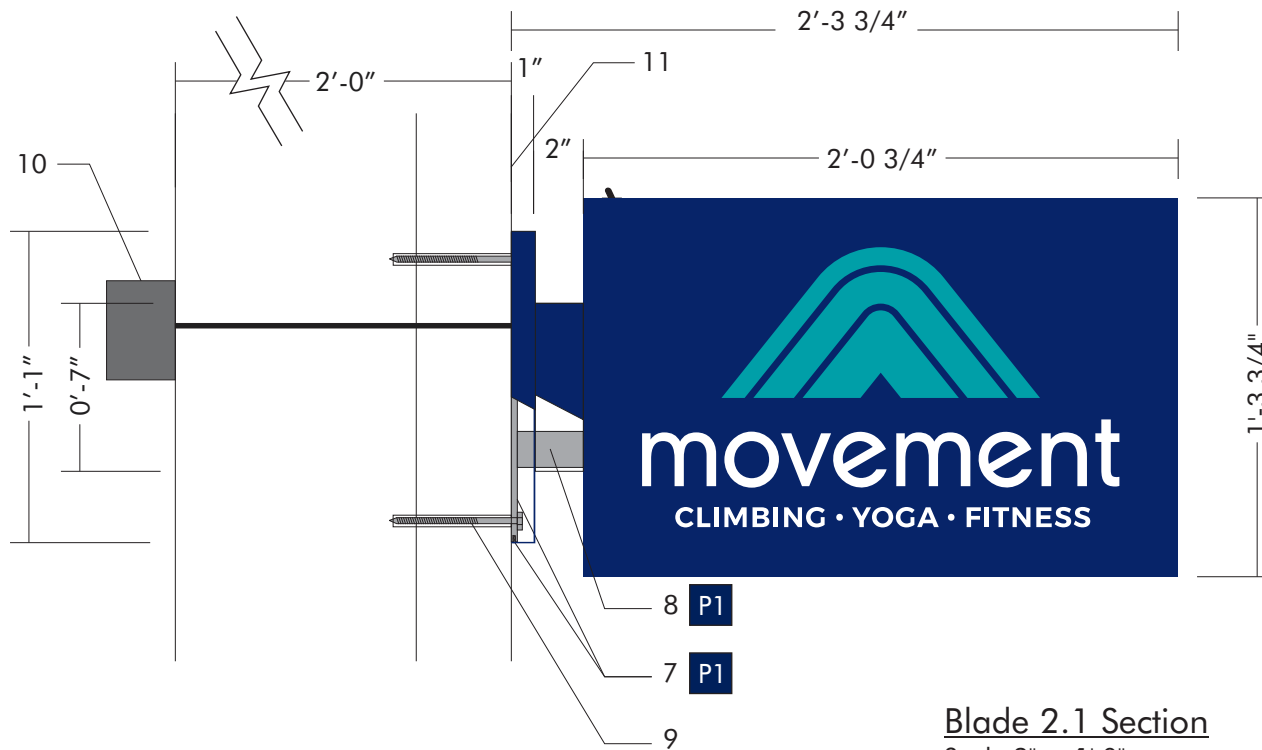
M1 White trimcap

P2 V2 PMS 281 - Retainers
/3M 3630-36 Blue

P3 Color to match exterior wall: PTM SW#7074 "Software"

Sign 1.2 Section B Detail

Scale 2" = 1' 0"

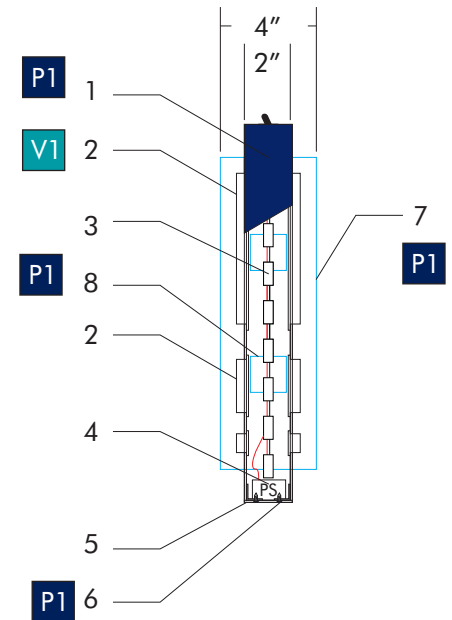


Blade 2.1 Detail 2.7 SF
Scale 1 1/2" = 1' 0"

Fabricated aluminum blade sign with push thru plex letters and white LED illumination.

P1 PMS 281

V1 3M Trans. Teal Green 3630-246



Blade 2.1 Section
Scale 3" = 1' 0"

1. Fabricated aluminum blade sign painted P1
2. 1/2" white plex push thrus. Logo with V2 vinyl
3. Internal LED illumination 4000K.
4. Internal power supply
5. Removable panel for LED and PS access
6. #8 countersunk screws for access panel (4) total painted P1 to match blade.
7. 13" x 4" x 1/4" thk. alum. base plate with 1" escutcheon painted P1. Escutcheon mounted with small set screws into plate (4) total
8. (2) 1 1/2" alum. square tube outriggers welded to base plate and skinned in P1 painted alum.
9. (4) 1/4" lag and shields
10. Incoming primary power by others at sign location
11. Wall -Stucco (Dryvit) 2"-4" concrete/18" cinder blocks/ Depth is 24" total



Project:
Movement
1010 Callowhill St.,
Philadelphia, CA 19123

Client:
el Cap, LLC. - Movement
Contact: Shel Holguin

Filename:
23665 Movement - Callowhill R11

Revisions:
Initial Design LM 03/01/2024
R5 JF 8/20/2024
R6 JD 8/21/2024
R10 DF 11/15/2024
Page 11 of 15

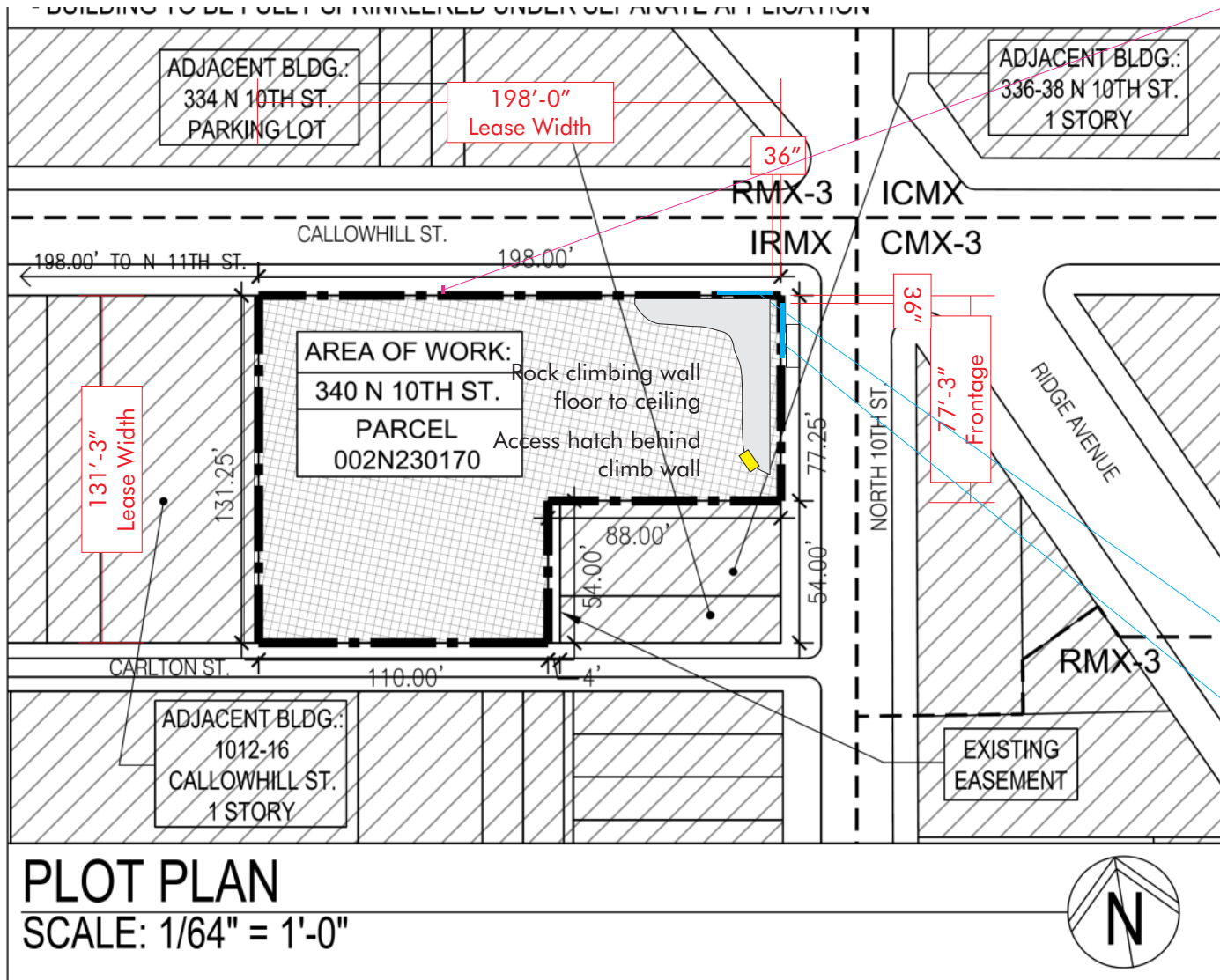


This sign is intended to be installed in accordance with the requirements of Article 600 of the National Electrical Code and/or other Applicable local codes. This includes proper grounding and bonding of the sign. The location of the disconnect switch after installation shall comply with article 600.6(A)(1) of the national electric code

SOUTHWEST SIGN CO.

1852 POMONA RD., CORONA, CA 92880
P: 951-734-6275 F: 951-735-9667 CSL#724929
WWW.SOUTHWESTSIGN.COM

Blade 2.1



Sign 1.2

Sign 1.1



Project:
 Movement
 1010 Callowhill St.,
 Philadelphia, CA 19123

Client:
 el Cap, LLC. - Movement
 Contact: Shel Holguin

Filename:
 23665 Movement - Callowhill R11

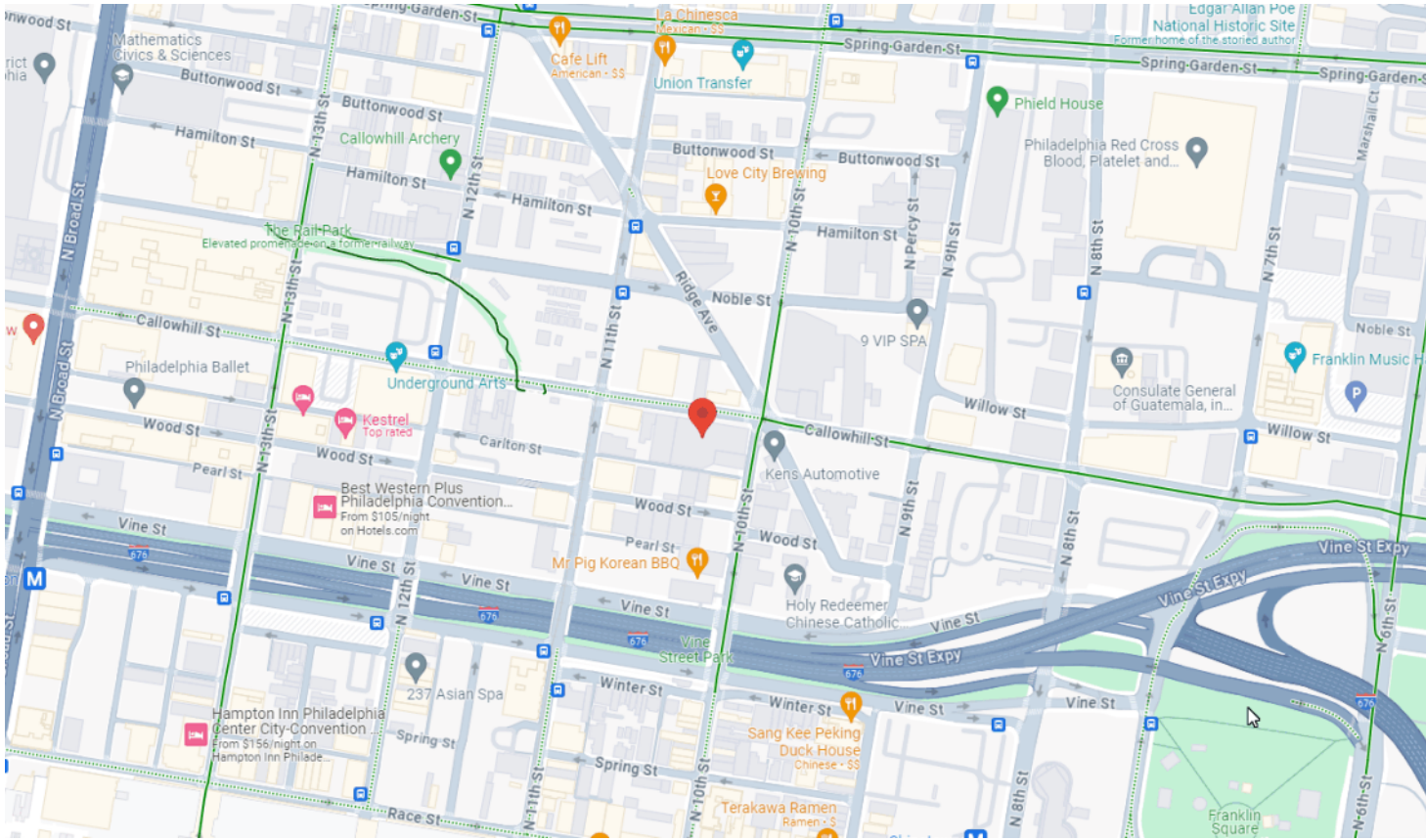
Revisions:
 Initial Design LM 03/01/2024
 R5 JF 8/20/2024
 R6 JD 8/21/2024
 R10 DF 11/15/2024
 Page 12 of 15



This sign is intended to be installed in accordance with the requirements of Article 600 of the National Electrical Code and/or other Applicable local codes. This includes proper grounding and bonding of the sign. The location of the disconnect switch after installation shall comply with article 600.6(A)(1) of the national electric code

SOUTHWEST SIGN CO.

1852 POMONA RD., CORONA, CA 92880
 P: 951-734-6275 F: 951-735-9667 CSL#724929
 WWW.SOUTHWESTSIGN.COM



Vicinity Map
Not To Scale



Project:
 Movement
 1010 Callowhill St.,
 Philadelphia, CA 19123

Client:
 el Cap, LLC. - Movement
 Contact: Shel Holquin

Filename:
 23665 Movement - Callowhill R11

Revisions:

Initial Design LM	03/01/2024
R5 JF	8/20/2024
R6 JD	8/21/2024
R10 DF	11/15/2024

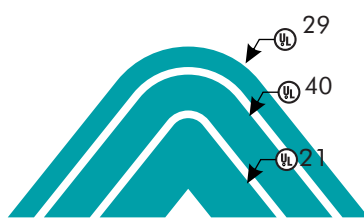
Page 13 of 15



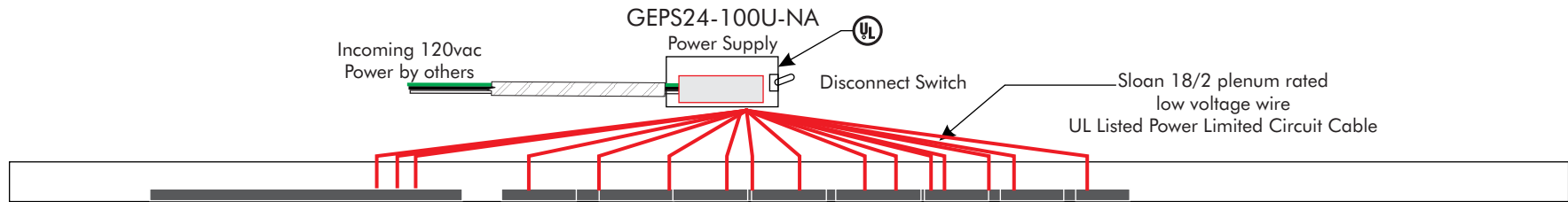
This sign is intended to be installed in accordance with the requirements of Article 600 of the National Electrical Code and/or other Applicable local codes. This includes proper grounding and bonding of the sign. The location of the disconnect switch after installation shall comply with article 600.6(A)(1) of the national electric code

SOUTHWEST SIGN CO.
 1852 POMONA RD., CORONA, CA 92880
 P: 951-734-6275 F: 951-735-9667 CSL#724929
 WWW.SOUTHWESTSIGN.COM

Sign 1.1 & 1.2



340
100watt
Power Supply
76.82 watt draw



340 GEMS2441-W1 LEDs
.23 watts each
Total of 78.2 watts on
(1) GEPS24-100U-NA Power Supply

	UL Label Location
340	LED Count
	100watt PS x1

This sign is intended to be installed in accordance with the requirements of Article 600 of the National Electrical Code and/or other applicable local codes. This includes proper grounding and bonding of the sign.

1. Unroll paper pattern, and tape to substrate. Level and center pattern on wall. Drill holes for secondary low voltage whips and mounting holes, and then remove pattern. Mount letters on the wall using the drawing as a guide. Remove faces & push secondary low voltage whips through substrate, mount letters onto substrate, and then replace faces.

2. Refer to wiring diagram(above right) and the transformer breakdown diagram (provided with letter set) to splice the secondary conductors. Each secondary circuit has a dedicated transformer and is color coded on the transformer breakdown sheet. Connect all of the positive leads from each letter in the secondary circuit together in parallel using UL approved wire nuts or crimp connectors (crimped with manufacturer's specified crimping tool).
Next connect all of the negative leads (black insulation) from each letter the secondary circuit together in parallel using UL approved wire nuts or crimp connectors (crimped with manufacturer's specified crimping tool).
Finally, connect all of the ground leads (bare wire with no insulation) from each letter the secondary circuit together in parallel using UL approved wire nuts or crimp connectors (crimped with manufacturer's specified crimping tool). Repeat this process for each secondary circuit.

3. Sloan damp location rated transformer are supplied in a UL Listed transformer box with disconnect switch and ground (skip to step 5).

4. (skip to step 5)

5. Connect the three secondary circuit leads (positive, negative and ground) to the transformer and/or transformer box as specified per the transformer and/or transformer box manufacturer's instructions included.

6. Connect the primary electrical supply to the transformer per the transformer manufacturer's instructions included.

7. Repeat the steps above for each transformer circuit.

8. At least one On/off switch, rated for the application, must be installed on the primary "hot" lead within the line of sight of the transformers.

9. Signs cannot be connected to a branch circuit exceeding 30 amperes.



Project:
Movement
1010 Callowhill St.,
Philadelphia, CA 19123

Client:
el Cap, LLC. - Movement
Contact: Shel Holquin

Filename:
23665 Movement - Callowhill R11

Revisions:
Initial Design LM 03/01/2024
R5 JF 8/20/2024
R6 JD 8/21/2024
R10 DF 11/15/2024
Page 14 of 15



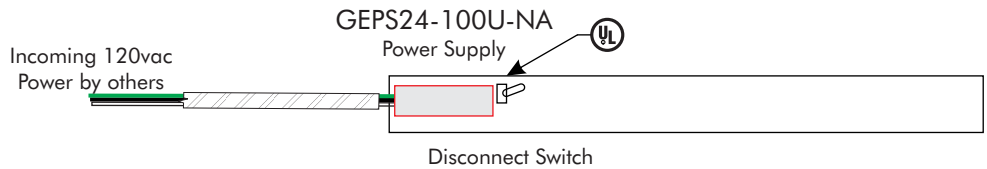
This sign is intended to be installed in accordance with the requirements of Article 600 of the National Electrical Code and/or other Applicable local codes. This includes proper grounding and bonding of the sign. The location of the disconnect switch after installation shall comply with article 600.6(A)(1) of the national electric code

SOUTHWEST SIGN CO.

1852 POMONA RD., CORONA, CA 92880

P: 951-734-6275 F: 951-735-9667 CSL#724929

WWW.SOUTHWESTSIGN.COM



43 GEMS2441-W1 LEDs
 .23 watts each
 Total of 9.89 watts on
 (1) GEPS24-100U-NA Power Supply

	UL Label Location
43	LED Count
	100watt PS x1

This sign is intended to be installed in accordance with the requirements of Article 600 of the National Electrical Code and/or other applicable local codes. This includes proper grounding and bonding of the sign.

1. Unroll paper pattern, and tape to substrate. Level and center pattern on wall. Drill holes for secondary low voltage whips and mounting holes, and then remove pattern. Mount letters on the wall using the drawing as a guide. Remove faces & push secondary low voltage whips through substrate, mount letters onto substrate, and then replace faces.
2. Refer to wiring diagram (above right) and the transformer breakdown diagram (provided with letter set) to splice the secondary conductors. Each secondary circuit has a dedicated transformer and is color coded on the transformer breakdown sheet. Connect all of the positive leads from each letter in the secondary circuit together in parallel using UL approved wire nuts or crimp connectors (crimped with manufacturer's specified crimping tool). Next connect all of the negative leads (black insulation) from each letter the secondary circuit together in parallel using UL approved wire nuts or crimp connectors (crimped with manufacturer's specified crimping tool). Finally, connect all of the ground leads (bare wire with no insulation) from each letter the secondary circuit together in parallel using UL approved wire nuts or crimp connectors (crimped with manufacturer's specified crimping tool). Repeat this process for each secondary circuit.
3. Sloan damp location rated transformer are supplied in a UL Listed transformer box with disconnect switch and ground (skip to step 5).

4. (skip to step 5)
5. Connect the three secondary circuit leads (positive, negative and ground) to the transformer and/or transformer box as specified per the transformer and/or transformer box manufacturer's instructions included.
6. Connect the primary electrical supply to the transformer per the transformer manufacturer's instructions included.
7. Repeat the steps above for each transformer circuit.
8. At least one On/off switch, rated for the application, must be installed on the primary "hot" lead within the line of sight of the transformers.
9. Signs cannot be connected to a branch circuit exceeding 30 amperes.



Project:
 Movement
 1010 Callowhill St.,
 Philadelphia, CA 19123

Client:
 el Cap, LLC. - Movement
 Contact: Shel Holquin

Filename:
 23665 Movement - Callowhill R11

Revisions:
 Initial Design LM 03/01/2024
 R5 JF 8/20/2024
 R6 JD 8/21/2024
 R10 DF 11/15/2024
 Page 15 of 15



This sign is intended to be installed in accordance with the requirements of Article 600 of the National Electrical Code and/or other Applicable local codes. This includes proper grounding and bonding of the sign. The location of the disconnect switch after installation shall comply with article 600.6(A)(1) of the national electric code

SOUTHWEST SIGN CO.

1852 POMONA RD., CORONA, CA 92880
 P: 951-734-6275 F: 951-735-9667 CSL#724929
 WWW.SOUTHWESTSIGN.COM