



November 25, 2024

Alex M. Smith  
The Philadelphia Art Commission  
One Parkway, 1515 Arch Street, 13<sup>th</sup> Floor  
Philadelphia, PA 19102

Dear Alex:

Creative Philadelphia (Creative PHL) is requesting a conceptual review of the Percent for Art project for the Broad Germantown, Erie Intersection during the Philadelphia Art Commission meeting on December 11<sup>th</sup>, 2024. The project is described below.

**SUBJECT:** Percent for Art – Broad, Germantown, and Erie Intersection

**PROJECT DESCRIPTION:**

This Percent for Art opportunity for the Broad, Germantown, and Erie (BGE) Intersection was initiated in collaboration with our partners at the City's Department of Planning & Development, as part of a major construction project to upgrade the intersection. The project is located in the Nicetown-Tioga section of North Philadelphia at the intersection of Broad Street, Germantown, and Erie Avenue. The intersection forms two triangles at Erie Ave and Butler Street where the majority of the site improvements are occurring and where the public artworks will be installed.

The BGE Percent for Art project will provide several two and three dimensional artworks that are permanent, site-specific, and reflect the culture, values, and diversity of the Nicetown-Tioga community. Telling the story of this neighborhood's past as well as envisioning the future was of particular importance to community members.

Creative PHL distributed a Call for Artists which was open from August – September of 2023 and 52 artist teams applied. Creative PHL assembled a Percent for Art Committee to guide the selection of the artist, which included: members of the Honoring History Committee (a group of neighborhood history enthusiasts and community stakeholders) local arts and culture professionals, representatives from the Project Design team, and representatives of Creative PHL and the City's Department of Planning & Development.

The BGE Percent for Art Committee selected four (4) finalists to provide design proposals. The artists received input and inspiration from the community, prior to and after creating their proposals, through in-person and online community engagement meetings and an online survey that collected public feedback about each design. Artist Gary L. Moore was selected by the BGE Percent for Art Committee as the winning artist. Gary has designed three coordinated artworks titled "Afro-Sankofa / In Flight". The first artwork is titled "Afro-Sankofa/ Arrival" and is located at the Erie triangle. It consists of two thematic, glass mosaics on the surface of planters facing Broad Street. The second artwork is titled "Afro-Sankofa/ Nesting" and is located at the Butler Triangle. This glass mosaic seat wall is a swirl of color that conveys a landscape theme of nature, birds, and motifs that connect with the other site works. And lastly, "Afro-Sankofa /Perched" is a freestanding, colorful steel sculpture with an African Sankofa bird resting on top, to be located at the Butler triangle.

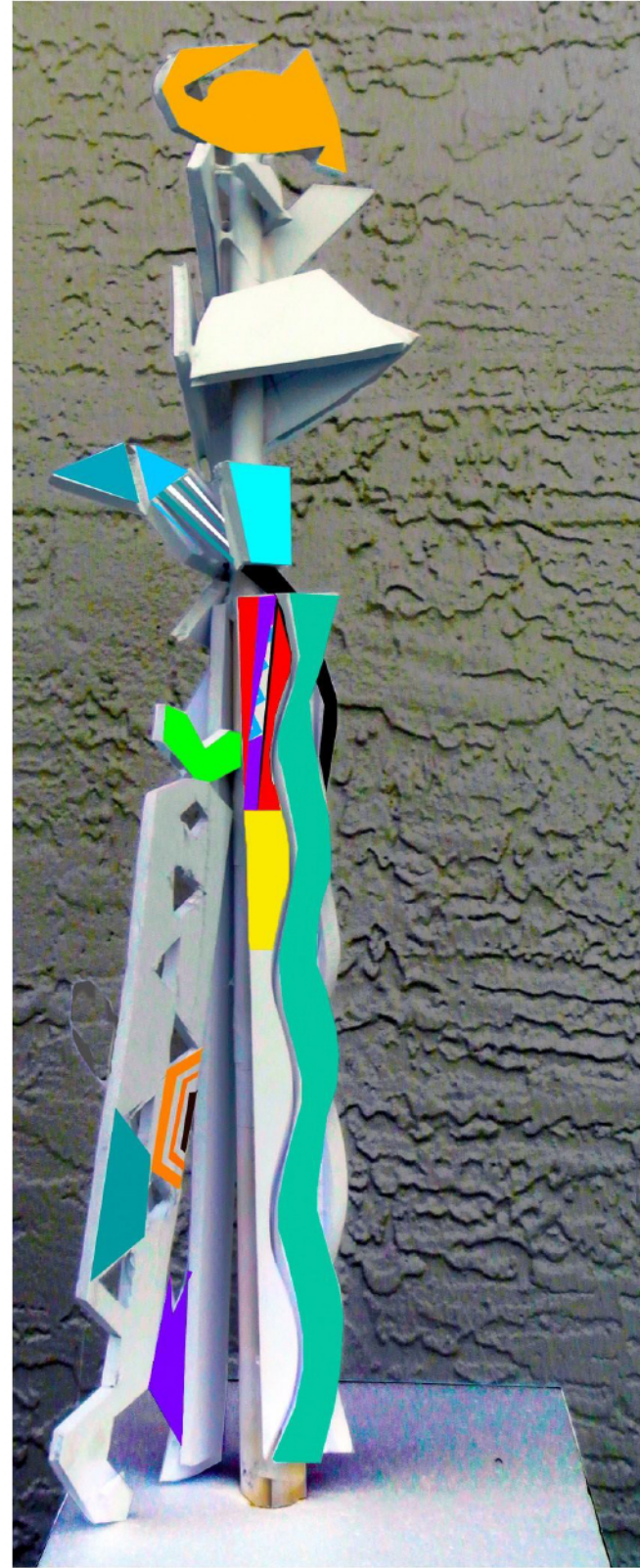
Each piece in this overarching series is inspired by the culture, architectural context and color palette of the neighborhood. With these beautiful works, the artist's goal is to tell a story through the mythological African Sankofa about celebrating the Nicetown-Tioga neighborhood's past and preparing for building a brighter future.

Should you require any additional information please do not hesitate to call me at 215.686.4596.

Sincerely,

A handwritten signature in black ink, appearing to read "Marguerite A.", written in a cursive style.

Marguerite Anglin, RA, NOMA  
Public Art Director  
Creative Philadelphia



*"Afro-Sankofa Perched"*  
conceptual model for sculpture component

# *Afro-Sankofa In-Flight*

**Percent for Art  
Broad, Germantown Erie  
Creative Philadelphia**

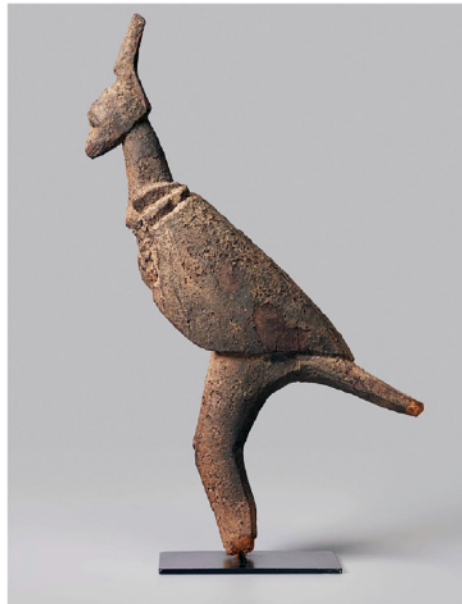
**Artist, Gary L. Moore**

December 2024

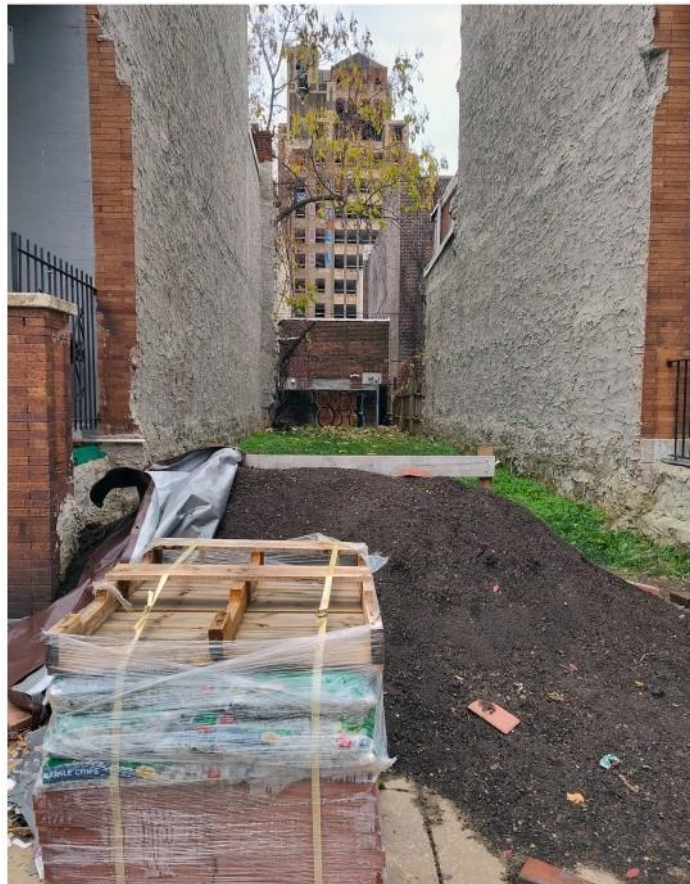
## **Afro Sankofa/ In-Flight**

*It was fortold that a once vibrant community, Nicetown-Tioga, was now in transition and needed a story inspired by a selection of quotes from residents and a community's vision in creating a "breathing space" and a transit respite in the center of a historic and diverse community.*

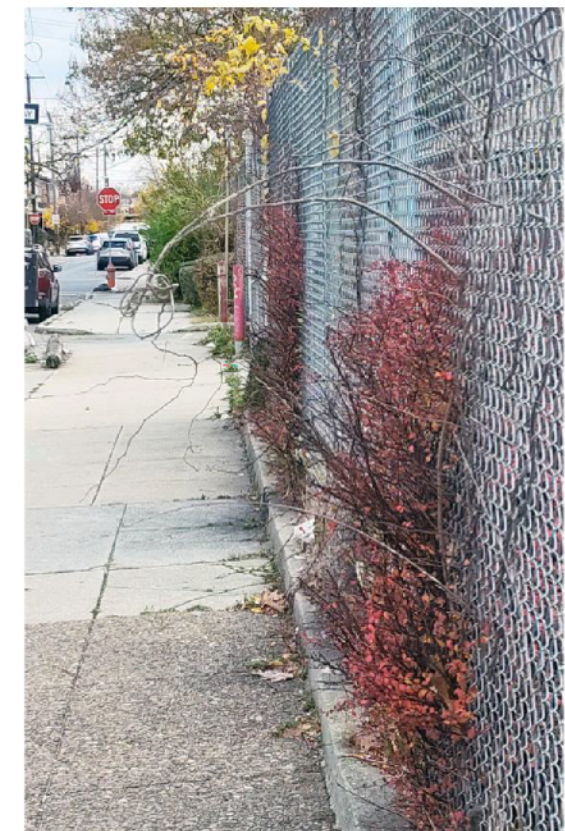
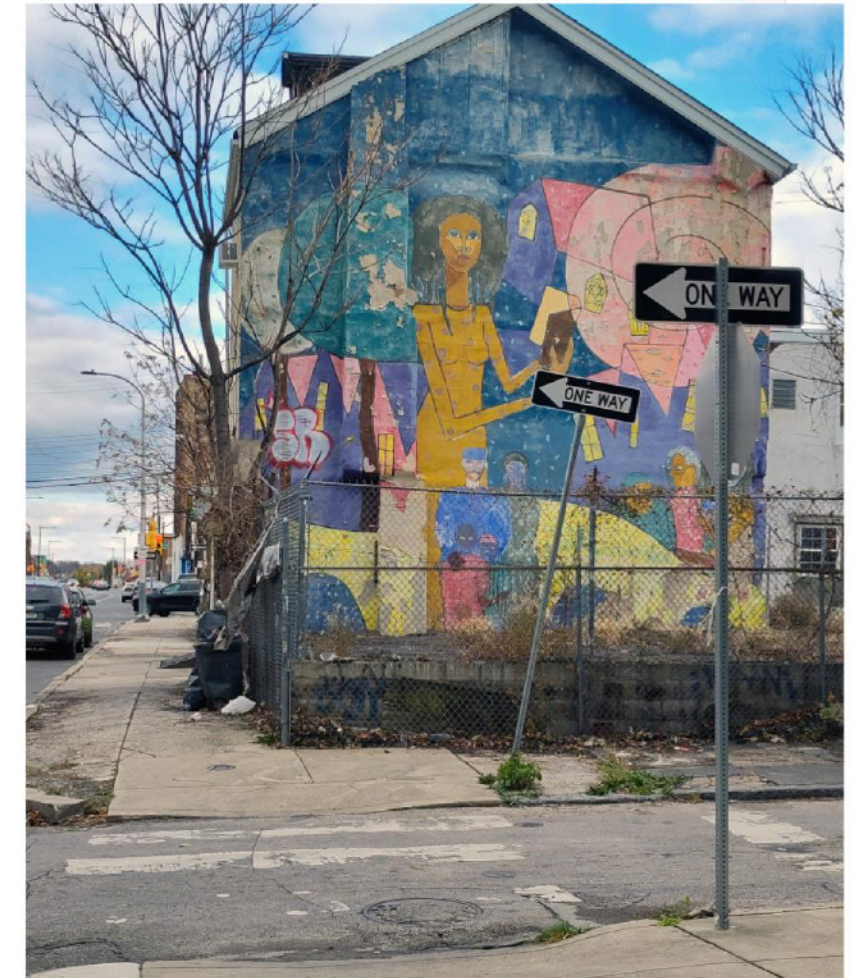
*The Afro Sankofa, a mythological figure in West African lore was summoned to Butler, Broad Street and Erie Avenue. This would be the first stop to settle and assist in creating a positive present to celebrate the past and prepare for building a brighter future.*



Carved wood Bird figure dated early 20th century from the Lobi people, Burkino Faso



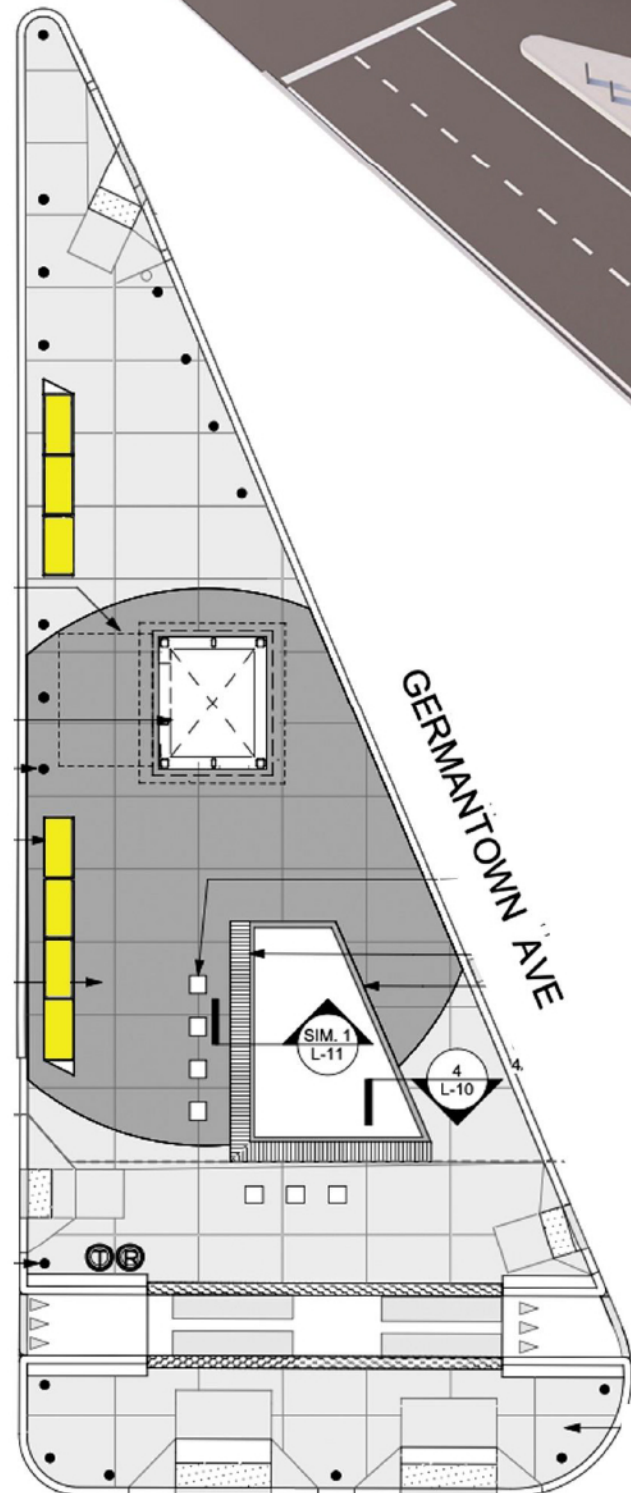
# Community in Transition



# Color and Design



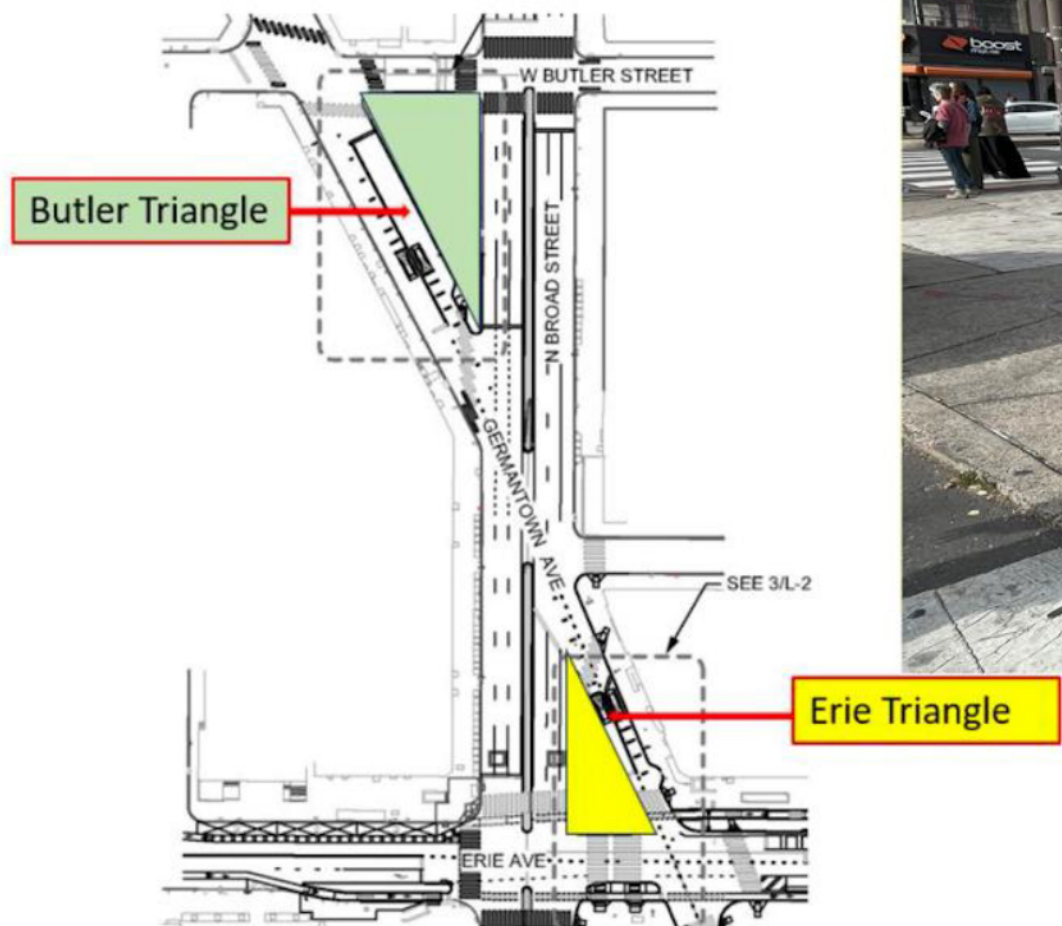
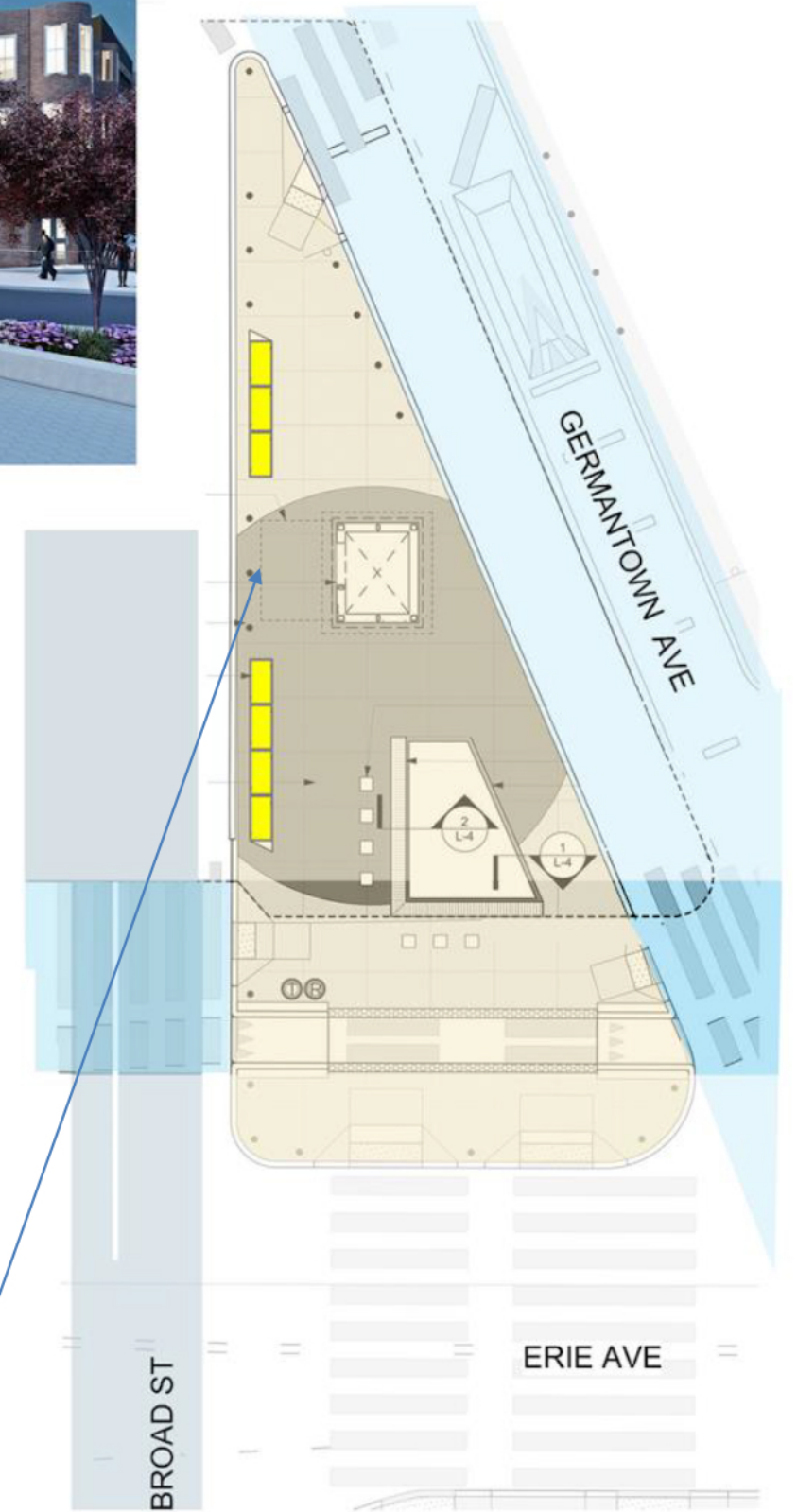
Design concept prior to artist installation



**ERIE**

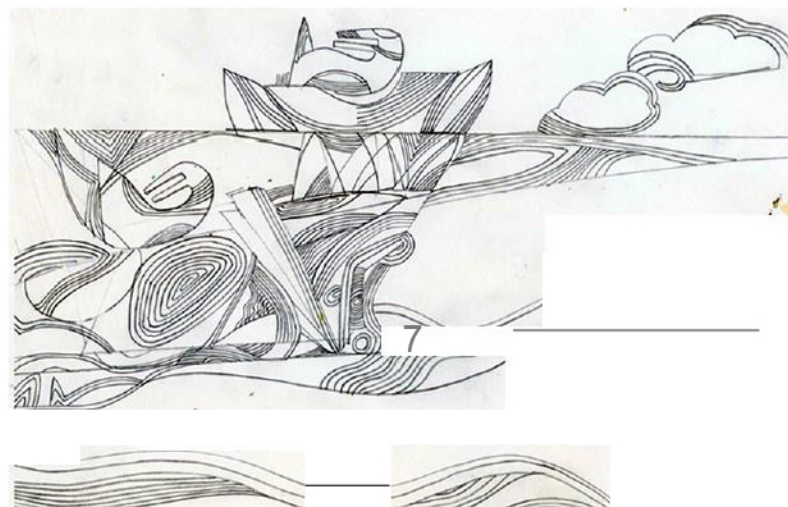


Erie Triangle looking south with Broad Street right and Germantown Ave at left



**LOCATION OF PLANTERS  
MARKED IN YELLOW**



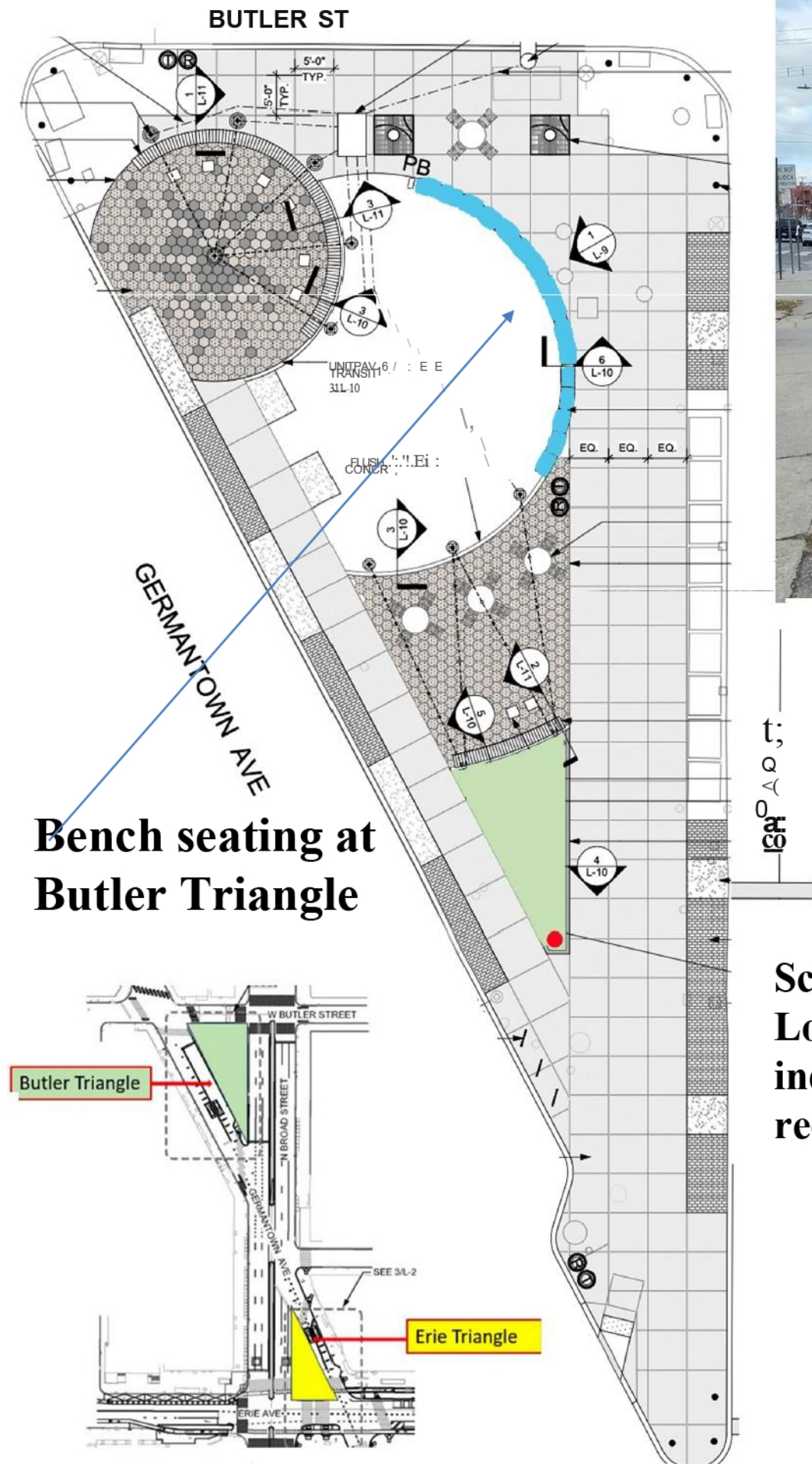


**Project 1: Erie Triangle**

*..the bombastic arrival  
of Afro-Sankofa''*

Facing Broad Street  
Material: Glass  
Mosaic

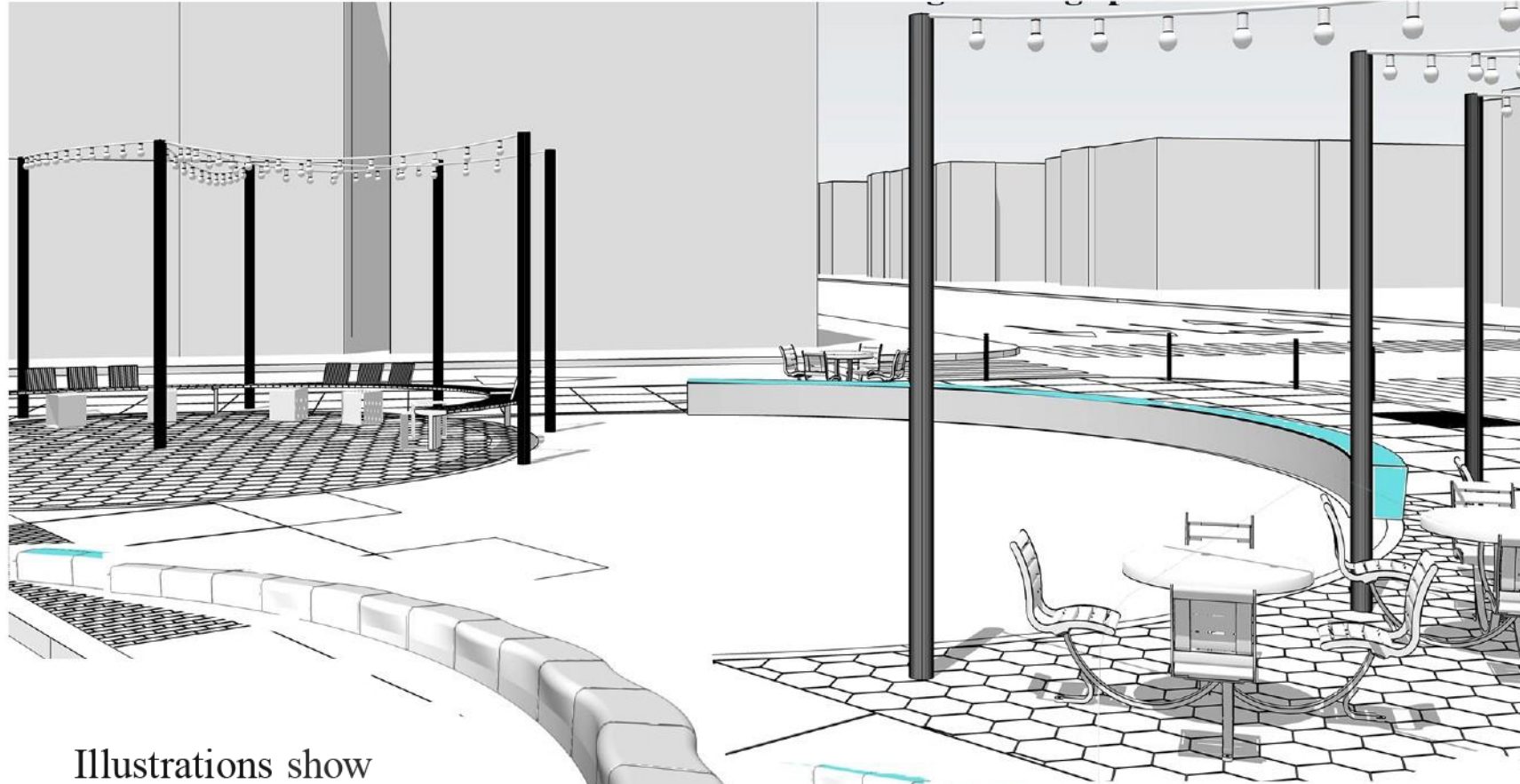




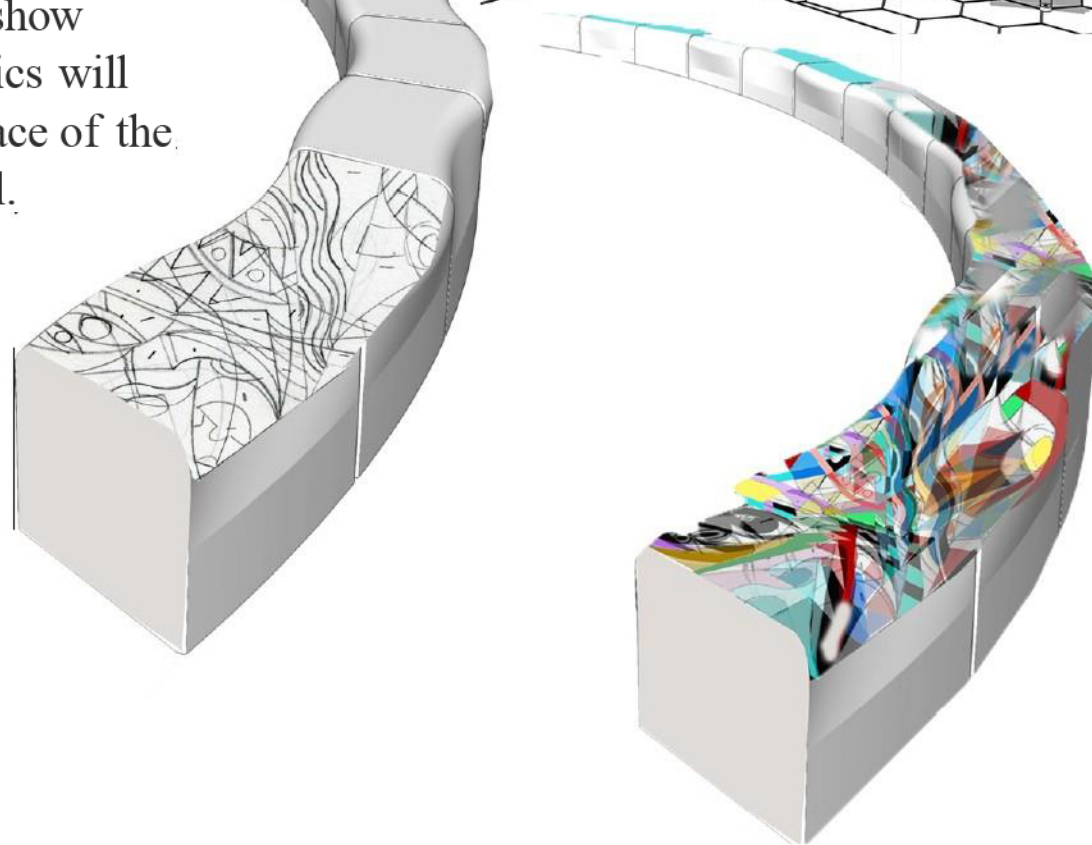
**Sculpture Location indicated by red dots**



Together the Seat Wall and Sculptural features at Butler Triangle offer a unique outdoor art environment at a central transportation hub and community gathering space.



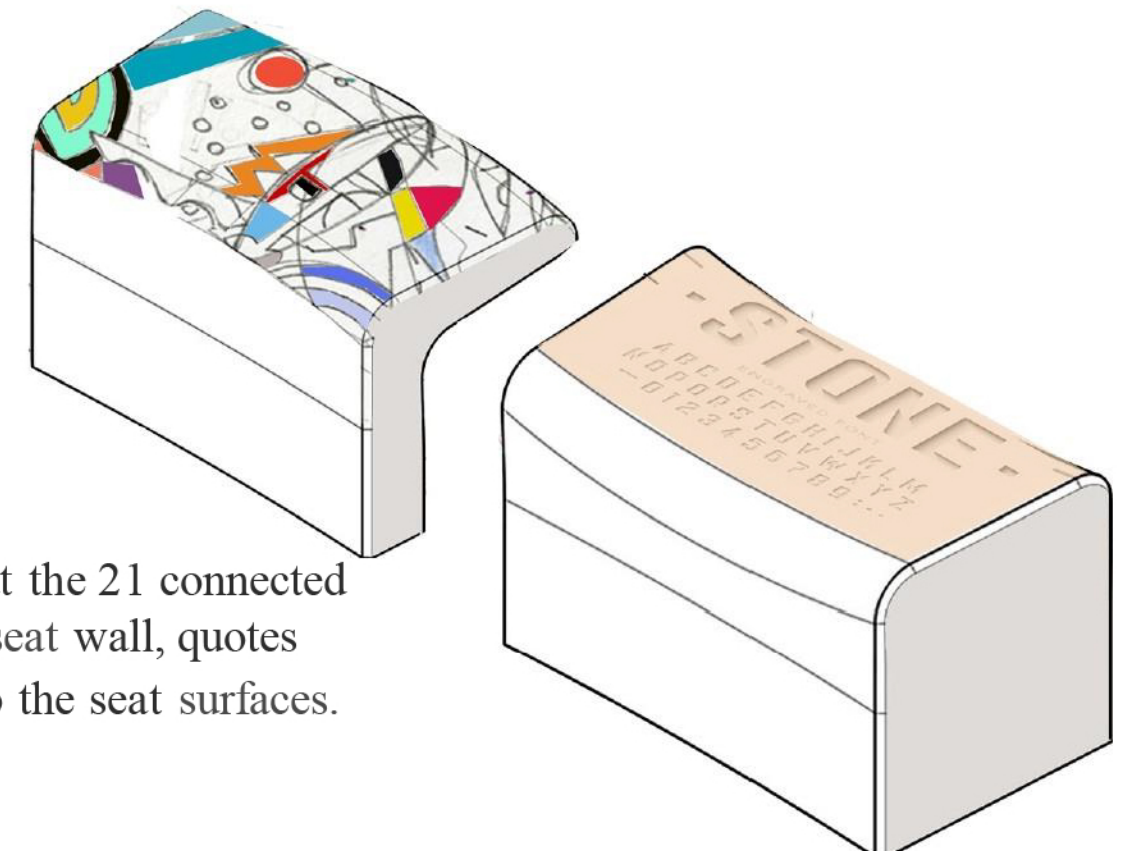
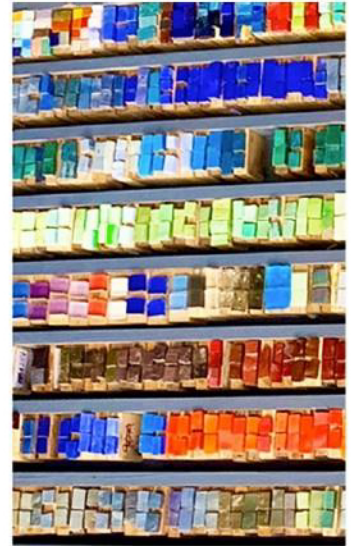
Illustrations show that glass mosaics will cover the top surface of the Seat Wall.



**Project 2: Butler Triangle**  
***“Afro-Sankofa Nesting”***

**A jazzy flavored, swirling, festive glass mosaic with motifs from nature and sensations of positive energy.**

***“Nesting”* connects visually with the Erie Triangle through its patterns and colors continuing the journey of the Afro-Sankofa.**



Spaced throughout the 21 connected sections of the seat wall, quotes are engraved onto the seat surfaces.

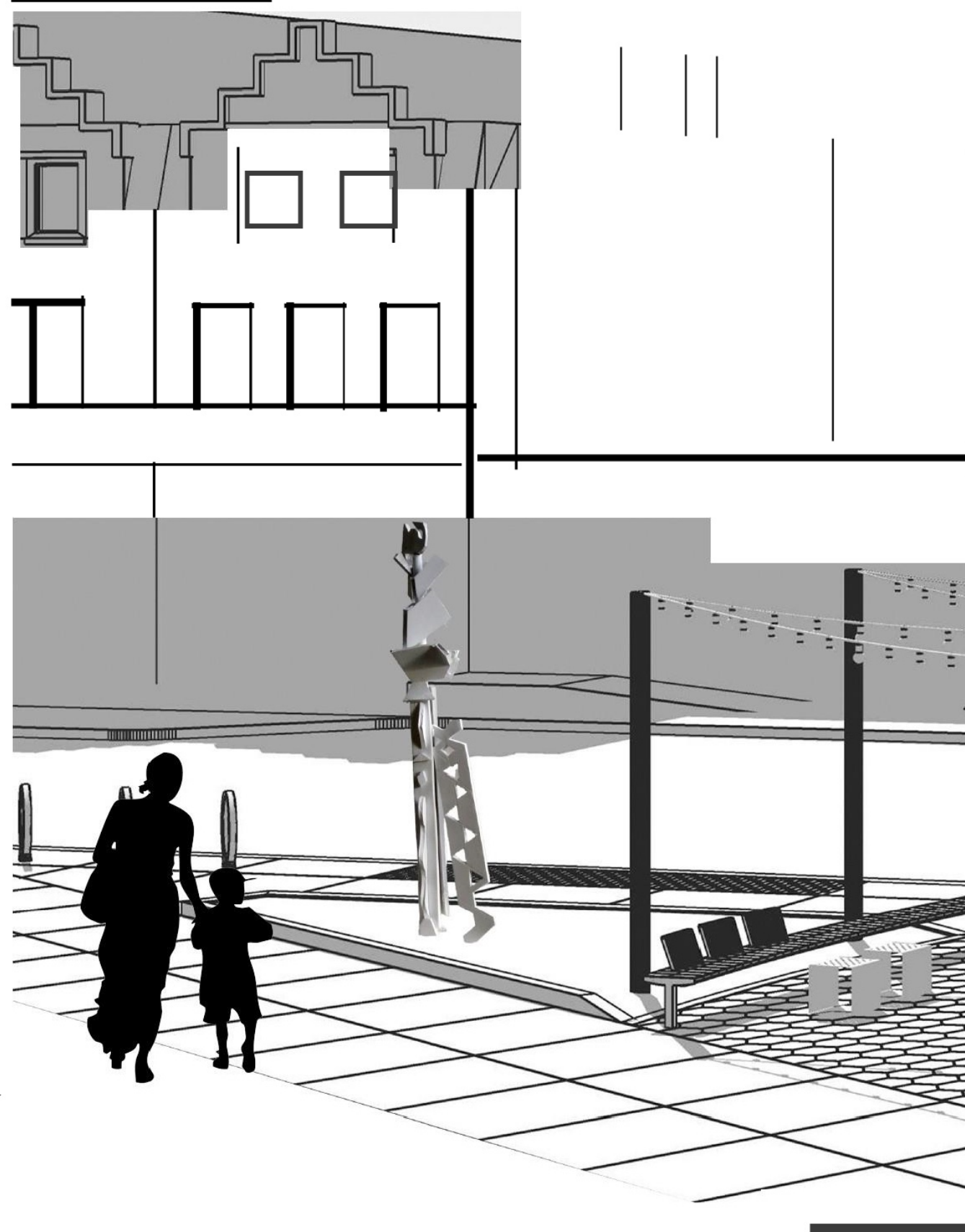


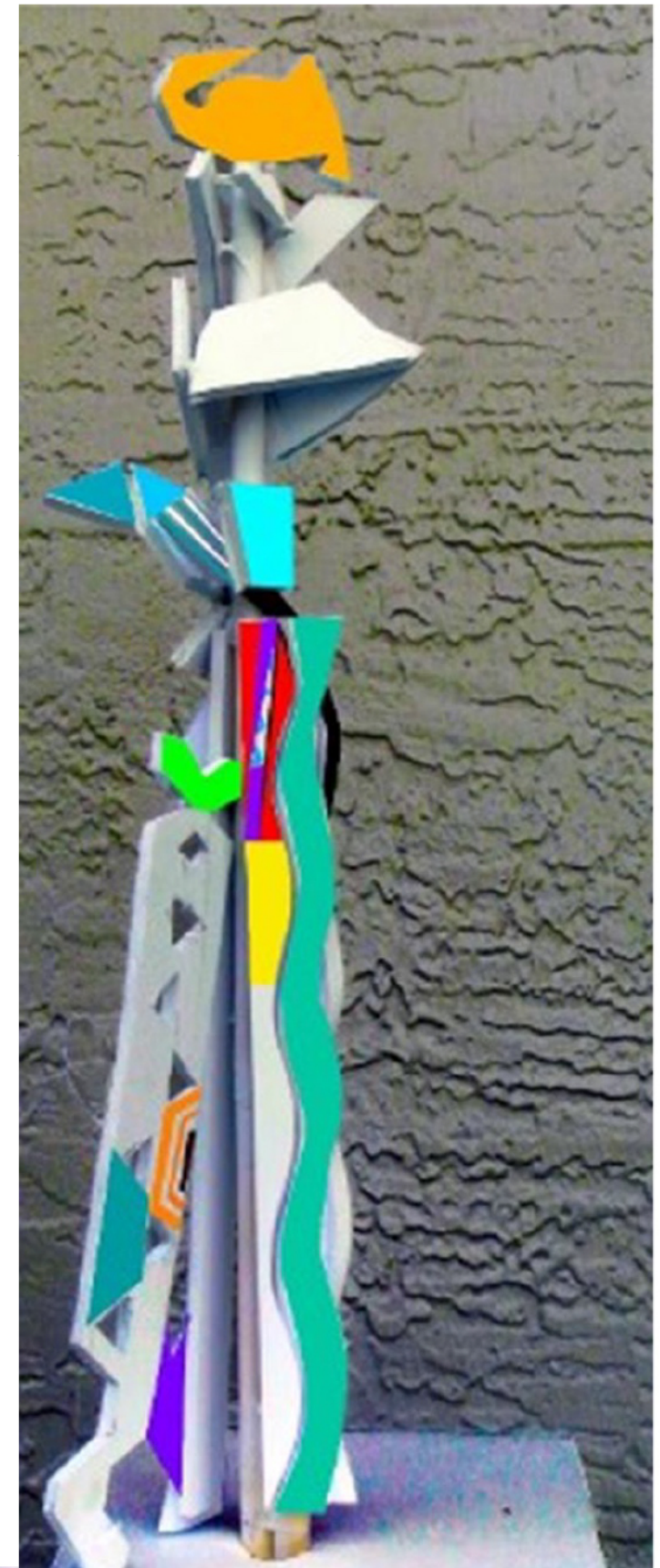
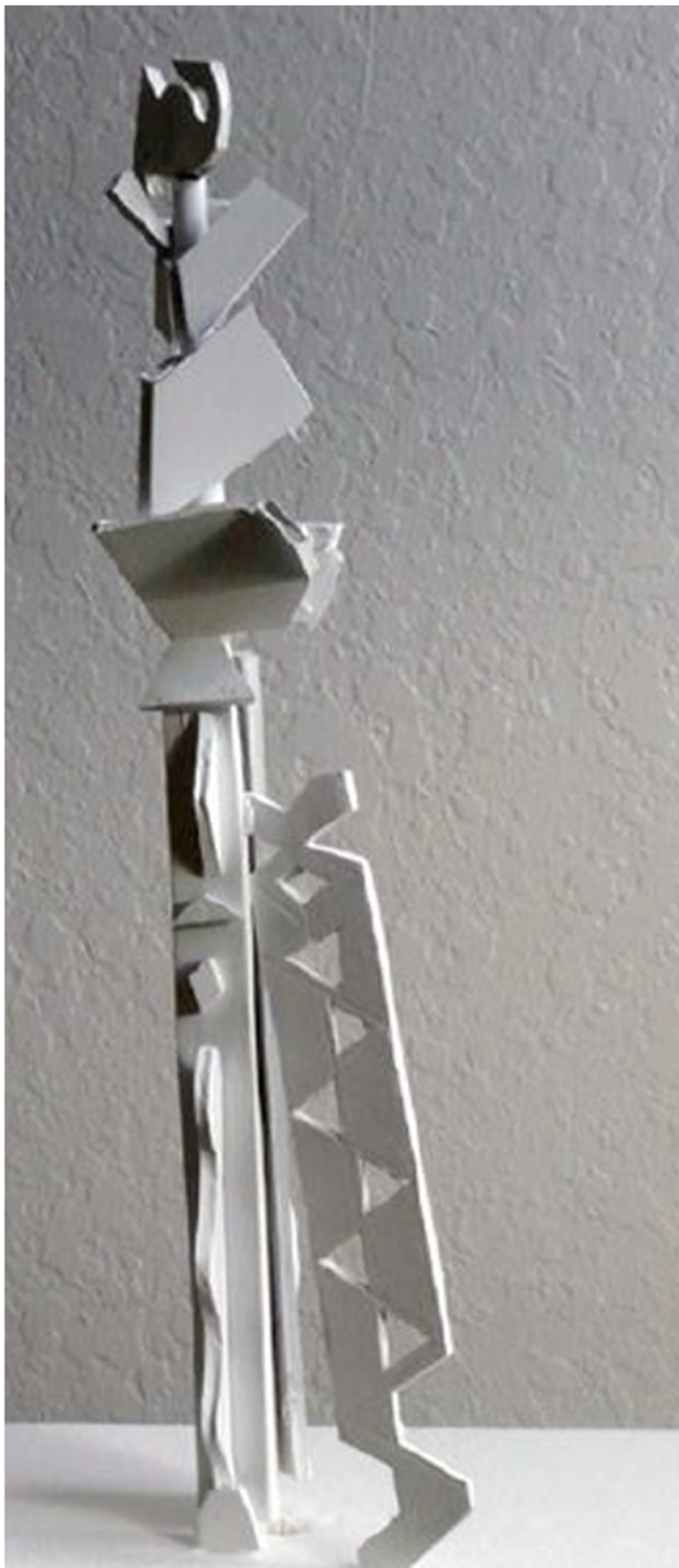
### Project 3: *"Afro-Sankofa Perched"*

Located at the southern tip of the Butler Triangle "Perched" is fabricated in steel and surfaced with auto mobile paint (acrylic polyurethane enamel paint), structural engineered bolted and mounted onto a poured concrete base.

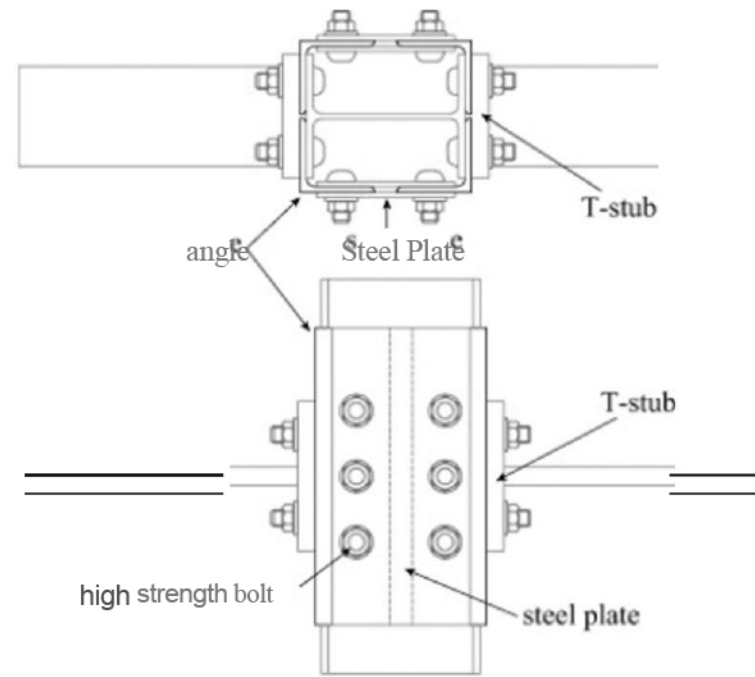
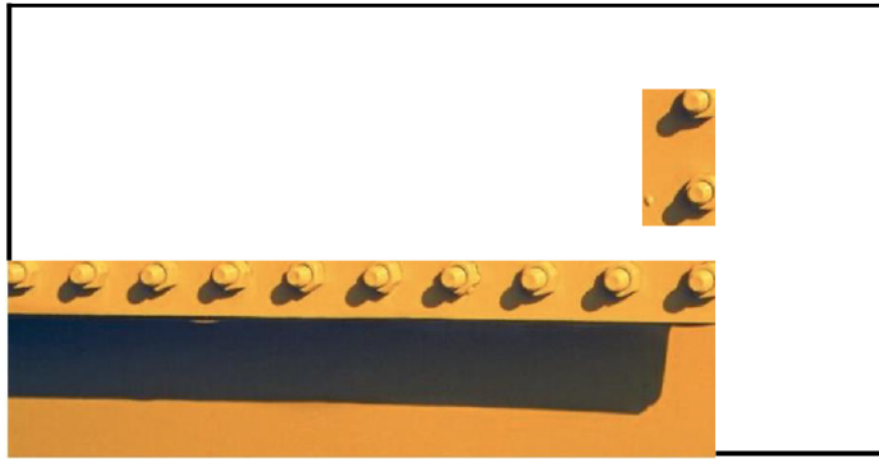
Dimensions: 12' h x 5' d x 4' w

Description: The concept design for "Perched" is inspired by plank masks created by the Bwa peoples in the town of Dossi, Burkina Faso. The masks represent nature spirits that fly including birds and insects.

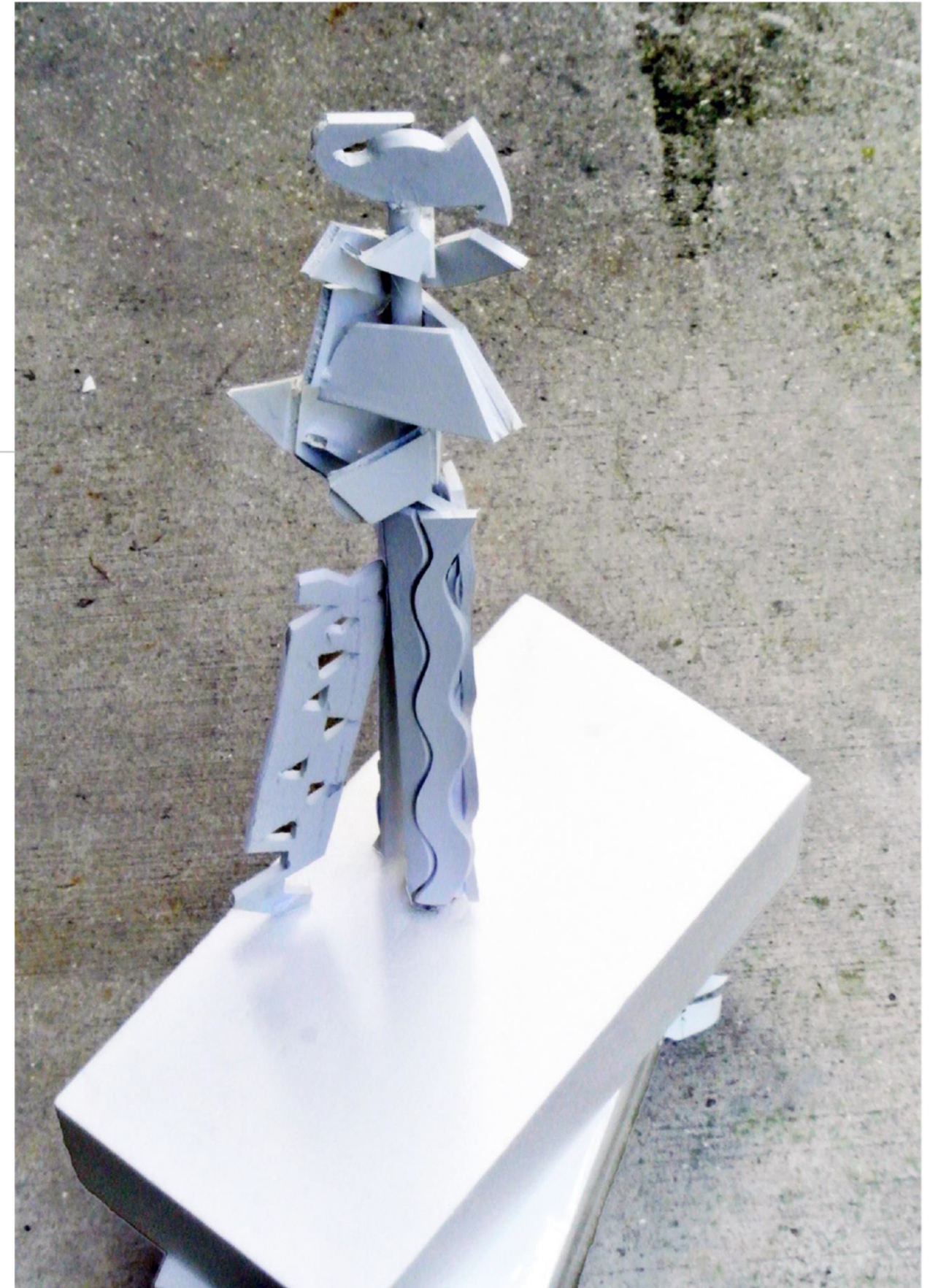




**Project 3: *Afro-Sankofa Perched***



**Examples of Bolting  
Metal Segments for  
Afro-Sankofa In  
Flight**





# Post Installed Anchors

Post installed anchors: These are the anchor bolts that are installed into an existing concrete surface, usually by drilling. These bolts are also referred to as expansion bolts or chemical anchors. They transfer the loads to or from concrete by direct bearing or friction or both.

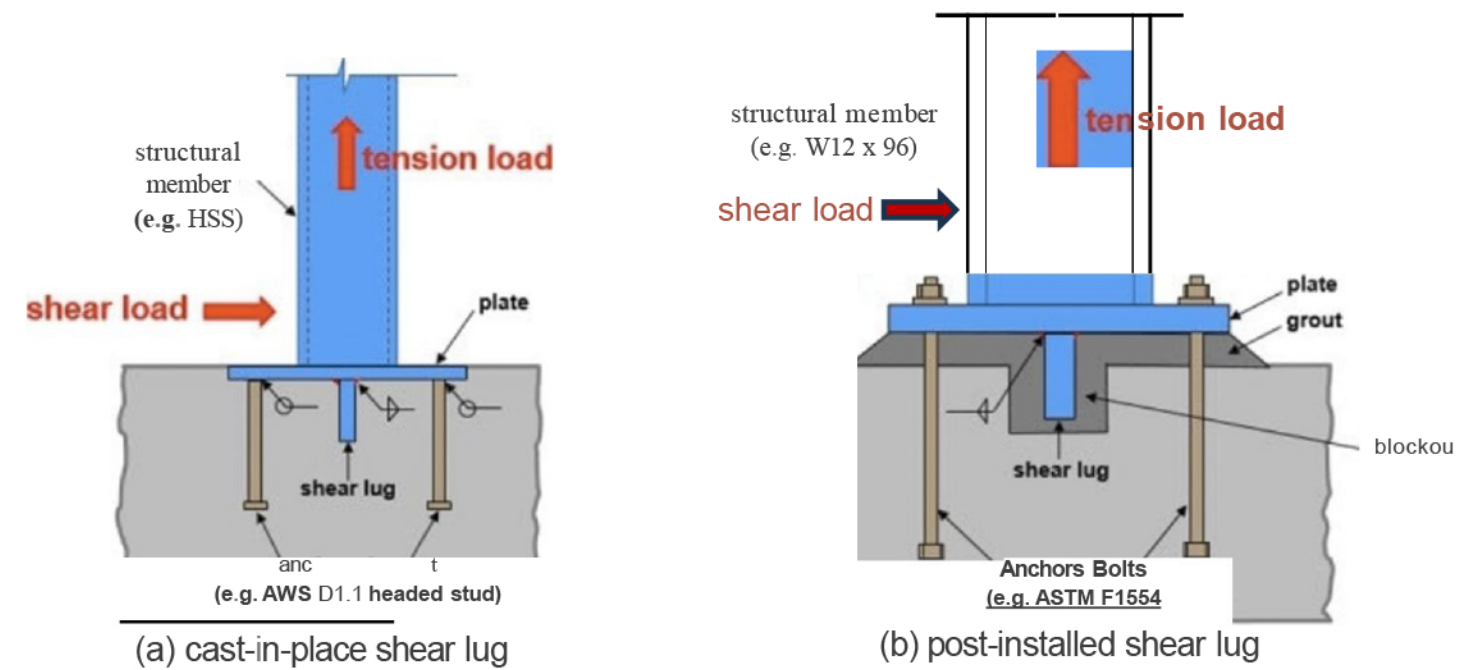
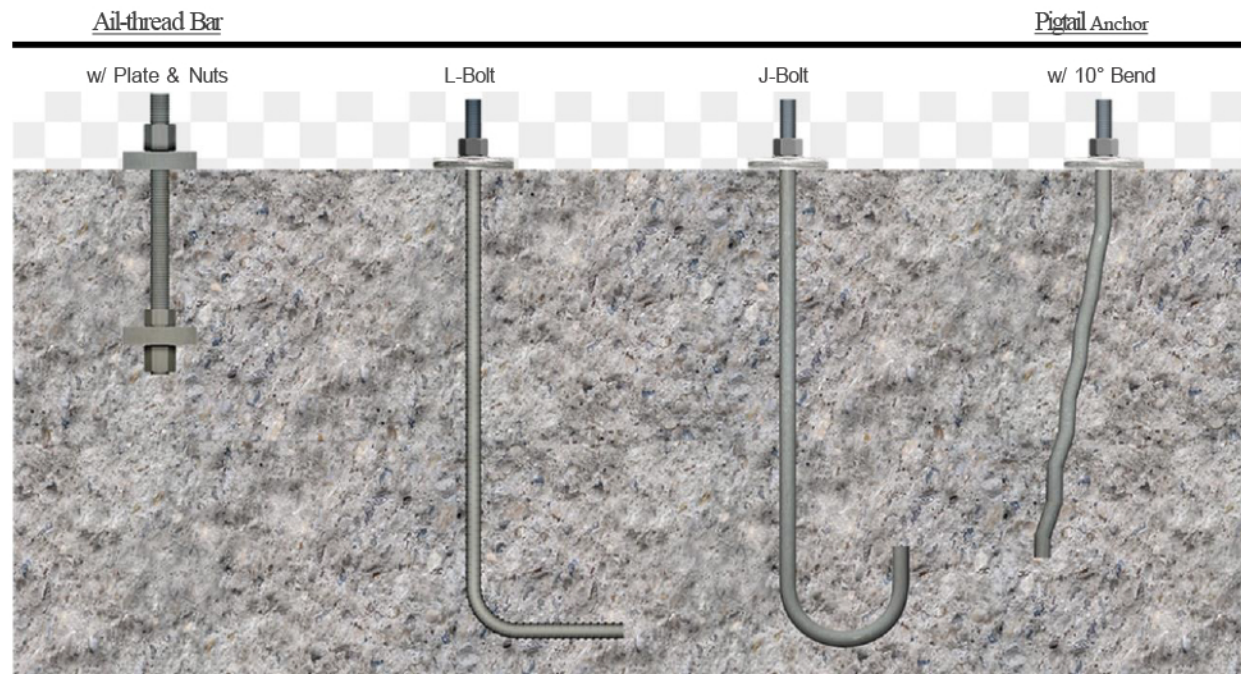
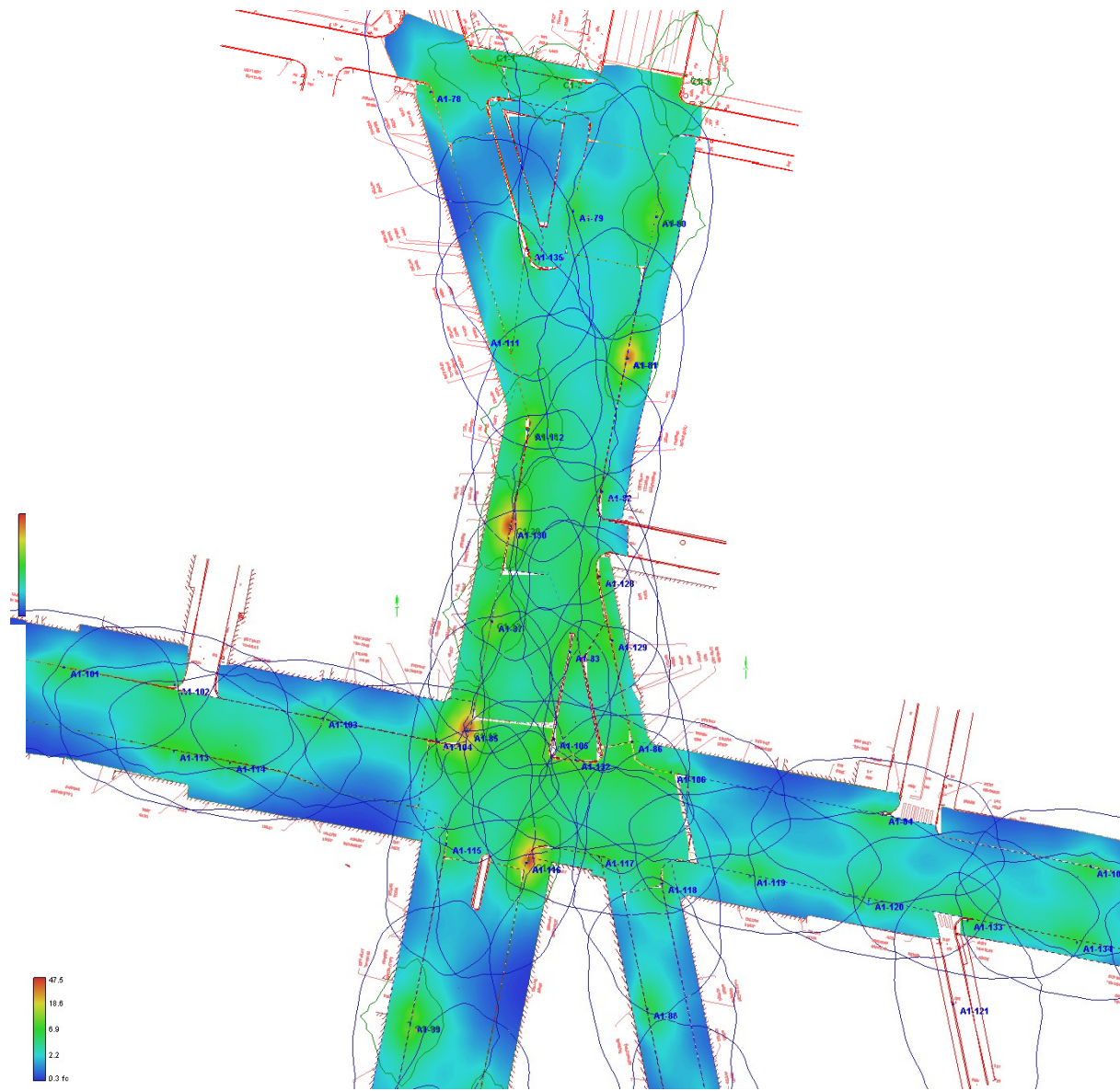


Figure 1: Types of shear lugs



BGE Site Lighting



**Ninth Street Pedestrian Mall**

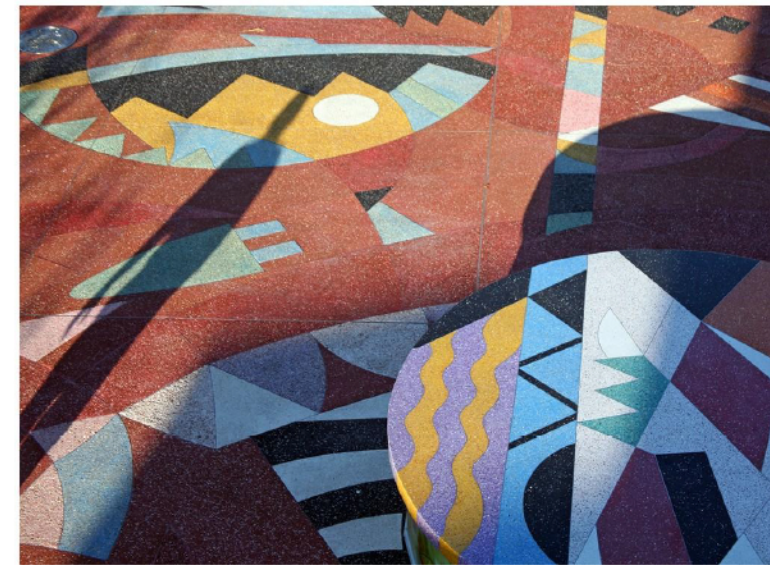
*Gary Moore  
Rustic terrazzo, dyed concrete  
unit pavers, bronze inserts,  
landscaping*

Project completed in 1995  
Historic Overtown, Miami  
Architects: Gerald C. Marston,  
Wallace Roberts & Todd  
Photo: Gary Knight &  
Associates, Inc.

Artist Gary Moore collaborated with landscape architect Gerald Marston of Wallace Roberts & Todd in the creation of the Ninth Street Pedestrian Mall, an innovative infrastructure project located in Overtown, the historic center of Miami's African-American community. Inspired by African Kente textile weavings, the main plaza features a vibrant pattern of oranges, yellows, blues, and greens in rustic terrazzo. Seating and whimsical lighting elements punctuate the space. Large bronze relief medallions inset in the plaza floor document, commemorate, and celebrate the history and heritage of the Overtown Community. Future planned additions to the mall include streetscapes for the historic Overtown Folklife Village, a multi-use performance plaza for the Lyric Theater, and a sculptural Overtown Tower.



# Previous Work

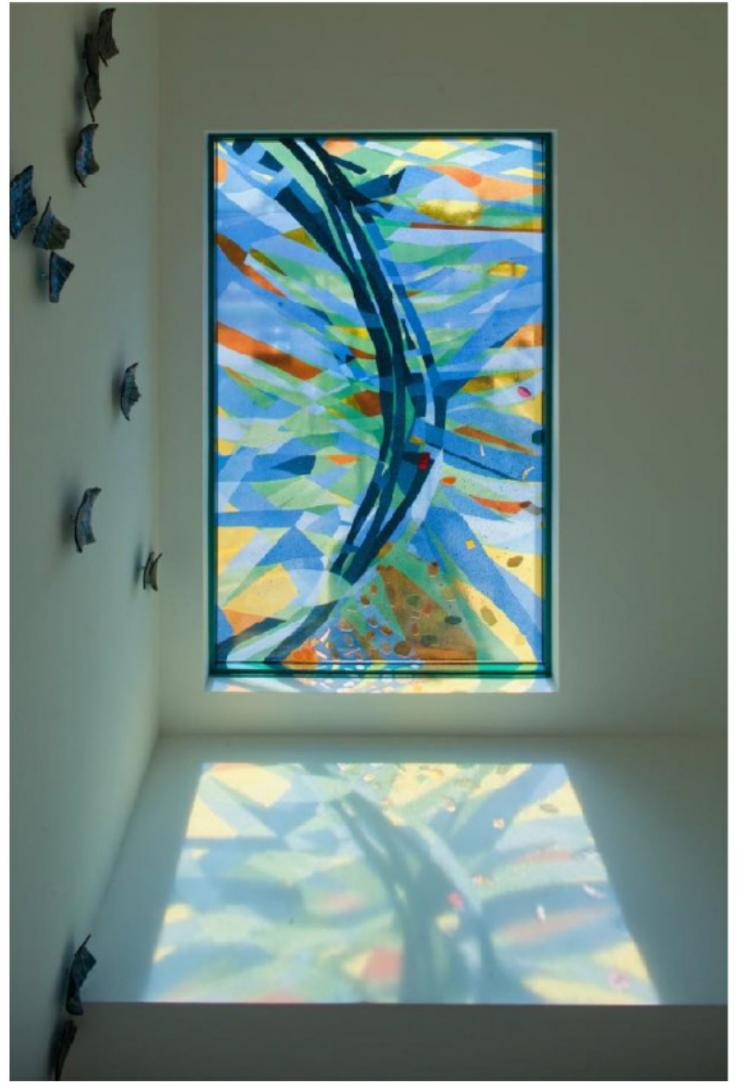


## PREVIOUS WORK

*"Pharoah's Dance Plaza"*  
Miami Performing Arts Center  
Miami FL



*“Wind Through Four Points”*  
Four Points Government Facility  
West Palm Beach, FL



**PREVIOUS WORK**

## Community Engagement

Arts Education Consultant and poet Kerry Kennedy will lead two (2) poetry/visual arts workshops where participants will be presented with information on the conceptual origins for Flight of Afro Sankofa. Ms. Kennedy's most recent Community Engagement Project was with the Mellon Foundation's Columbus Monument Project, 2024.

The theme of the workshop will be based on **Sankofa** which is an expression in the Twi language of Ghana whose literal meaning is "Go back and get it!" It is a fusion of the two words in the Akan second-person imperative sentence, "San kJfa!"

Its corresponding Akan proverb is, "Se wo were fi na wosan kofa a yenkyiri." To wit, it is not taboo to go back and get something after you have forgotten it. More literally, it means if you forget and you go back to get it, there is nothing wrong with it.

Based on Gary Moore's Sankofa concept which is from Ghanaian culture; two ethnic groups the Twi and Akan people will be explored. Both groups have an oral culture of proverbs which instill wisdom by providing guidance for life. One example is

When you remove one broomstick it breaks but when you put them together they do not break.

This is similar to the English proverb, "In unity lies strength." This principle is so essential for maintaining a stable society when it is vulnerable to attacks from neighboring tribes.

After explaining Twi and Akan proverbs and the history of written short poetry traditions; Ms. Kennedy will lead the poetry writing workshop where participants will also illustrate their own proverb/poem on paper provided at the workshop.

Participants will take the illustrated poems home as a souvenir.

Workshop Schedule 90 min.

- Introduction of workshop leaders
- Explanation of workshop goals
- History of Twi/Akan proverbs and short poetry forms from other cultures
- 60 mins art creation by participants
- Sharing of work if time permits

# Project Schedule 2024-2025

**September 25, 2024:** Artist will finalize 3D concept and rendering, sending to Creative Philadelphia.

**Between September 25-October 16, 2024:** Artist will create a draft presentation for the Art Commission.

**October 16, 2024:** Artist and Creative Philadelphia will review draft presentation for Art Commission presentation.

**Between October 16-October 30, 2024 :** Artist will make any necessary changes to the Art Commission presentation. Creative Philadelphia will coach the artist on the presentation format and answer any questions leading up to Art Commission Presentation Day.

**November 30, 2024:** Creative Philadelphia will request space on the Art Commission agenda

**December, 2024:** Creative Philadelphia will send the Art Commission our final presentation.

**December, 2024:** Artist and Creative Philadelphia will resent to Art Commission via Zoom (sometime between 9:30am-2:00pm)

## **2 months**

Technical Drawing finalization

## **4 months**

Fabrication contingent on construction timeline which will impact installation timeline if there is a delay.

Community Workshops (MAY 2025)

## **2 months**

Sculpture installation

Glass mosaic on benches and planters application/cure period

Bench quotes added

Plaque installation

## **1 month**

Final site inspection

**Budget (\$200,000)**  
**(see Prevailing City**  
**Wages and 5 Percent**  
**for Art Boilerplate**  
**Contract)**

<i>Line Item</i>	<i>Budget Cost</i>	<i>Notes</i>
Materials costs for Planters, Seat Wall, Sculpture and Glass mosaic tile	90,000	
Site Installation PM	3,500	On site
Site Preparation and Installation	32,000	Including foundation costs and lighting
Engineering Costs	4,000	On site project management
Studio space 6 months	8,000	
Insurance (1%)	2,000	
Plaque fabrication and installation	1,000	
Contingency/Miscellaneous (and/or unanticipated costs; 10%)	10,000	
Artist Fee (18%)	36,000	
Project Management (5%)	8,000	
Travel	1,000	Hotel, per diem, transportation
Workshop costs	500	Notebooks, paper, drawing materials  Twenty-five (25) participants per workshop two (2) workshops for fifty (50) participants total
	<b>TOTAL</b>	
	<b>\$200,000</b>	