

1717 Arch Street, Suite 4010  
Philadelphia, PA 19103

T: 484.253.4700

November 27, 2024



Mr. Alex Smith  
Director, Philadelphia Art Commission  
City of Philadelphia Department of Planning and Development  
1515 Arch Street, 13th Floor  
Philadelphia, PA 19102

Subject: Philadelphia Water Department  
Lardner's Point Pumping Station Replacement/Rehabilitation  
Contract A – Sewer Maintenance Facilities  
BC Project No. 156077  
Application for Art Commission Construction Approval

Dear Mr. Smith:

The purpose of this correspondence is to formally request construction review/approval from the Art Commission for new Sewer Maintenance Facilities which will be constructed as part of the overall Lardner's Point Pumping Station Replacement/Rehabilitation Project. The Philadelphia Water Department (PWD) owns and operates the Lardner's Point Pumping Station (LPPS) which was constructed in 1904 and supplies over 30% of the water consumed by the City of Philadelphia on an average day. Since the 1960s, only minor renovations have occurred and the LPPS has operated largely untouched. All the existing pumps, electrical, and mechanical systems are approaching the end of their useful service lives. Consequently, PWD has initiated a capital improvement project for construction of a new pumping station. The proposed improvements will be implemented in four separate construction contracts as follows: Contract A-Sewer Maintenance Facilities, Contract B-Offsite Piping, Contract C-Pumping Facilities and Site Improvements, and Contract D-Green Stormwater Operations Facility. The Art Commission previously provided concept approval of the proposed improvements at the LPPS site (Contract C) during the public meeting on November 8, 2023.

The existing LPPS site is fragmented into several areas with various separate functions including Water Pumping, Sewer Maintenance, and material storage. In order to construct the proposed improvements at the LPPS site, the existing Sewer Maintenance Facilities must be relocated either temporarily or permanently to a new site. PWD has decided to construct new, permanent Sewer Maintenance Facilities (Contract A) within available land at the Northeast Water Pollution Control Plant (NEWPCP) site.

**Existing Site Conditions**

The NEWPCP site address is 3899 Richmond Street, Philadelphia, PA 19137. The NEWPCP site is part of an industrial waterfront area along the Delaware River and is bordered by Richmond Street and Interstate 95 to the north, Lewis Street to the east, North Delaware Avenue to the south, and Castor Avenue to the west. The new Sewer Maintenance Facilities will be constructed in an area on the eastern side of the NEWPCP site along Lewis Street approximately 1,200 feet

north of the Lewis Street and Delaware Ave intersection. The area of the new Sewer Maintenance Facilities is bordered by Lewis Street to the east and three NEWPCP interior access roads on all other sides as shown in the attached Figure 1. The area of the new Sewer Maintenance Facilities is located outside both the 100-year and 500-year floodplains of the Delaware River.

### **Proposed Improvements**

The main objective is to construct a sustainable, multi-use complex that will provide long-term value to PWD to support sewer maintenance field operations. Major components will include construction of an Sewer Maintenance Administration Building with personnel space for 100 field staff, Sewer Maintenance Garage, Operations Storage Building, Inlet Cleaning Dewatering Facility, material storage bins, and a yard area with parking spaces for field vehicles and equipment. Overall, the project will incorporate sustainable design, construction, and operations approach to achieve LEED Silver Certification.

The Sewer Maintenance Administration Building will be a single-story steel frame office building type structure. The building will include locker rooms, offices, and support spaces for field operations staff. The Sewer Maintenance Garage will be a pre-engineered single-story steel structure with load bearing masonry walls, formed metal insulated panels, and a steel framed roof. The building will include storage space for sewer maintenance vehicles and equipment. The Operations Storage Building will be a pre-engineered single-story steel structure with load bearing masonry walls, formed metal insulated panels, and a steel framed roof. The building will include storage space for NEWPCP materials and equipment. The Inlet Cleaning Dewatering Facility will be a single-story steel structure with cast-in-place reinforced concrete walls and a steel framed roof. The structure will include a sloped concrete floor and drain for dewatering the contents of sewer vacuum trucks.

Additionally, a new permanent facility sign, which will be submitted for Art Commission review under separate cover, is proposed near the entrance to the Sewer Maintenance Administration Building on Lewis Street. The new facility sign will match the signs at other PWD facilities including the Baxter Water Treatment Plant, Torresdale Finished Water Pump Station, and 61st Street Sewer Maintenance Facility. The proposed architectural design includes an aluminum illuminated sign set on a concrete base with stone veneer.

Additional submission materials, including photographs, renderings, and other supporting materials/information, will be provided under separate cover by December 4th in order to be added to the agenda for the Art Commission Public Meeting on December 11th.

Please send any correspondence regarding this application to the following:

Brian Sparks  
Philadelphia Water Department  
1101 Market Street, 2<sup>nd</sup> Floor  
Philadelphia, PA 19107  
brian.sparks@phila.gov

Christopher Patackis  
Brown and Caldwell  
1717 Arch Street, Suite 4010  
Philadelphia, PA 19103  
cpatackis@brwnald.com

Mr. Alex Smith  
Director, Philadelphia Art Commission  
November 27, 2024  
Page 3

Should you have any questions or need additional information, please do not hesitate to contact me at (484) 253-4685.

Very truly yours,

**Brown and Caldwell**

A handwritten signature in blue ink that reads "Christopher Patackis". The signature is written in a cursive style with a large initial "C".

Christopher Patackis, PE, BCEE  
Project Manager

cc: B. Sparks, PWD

Attachments:

1. Figure 1 - Existing Site Conditions

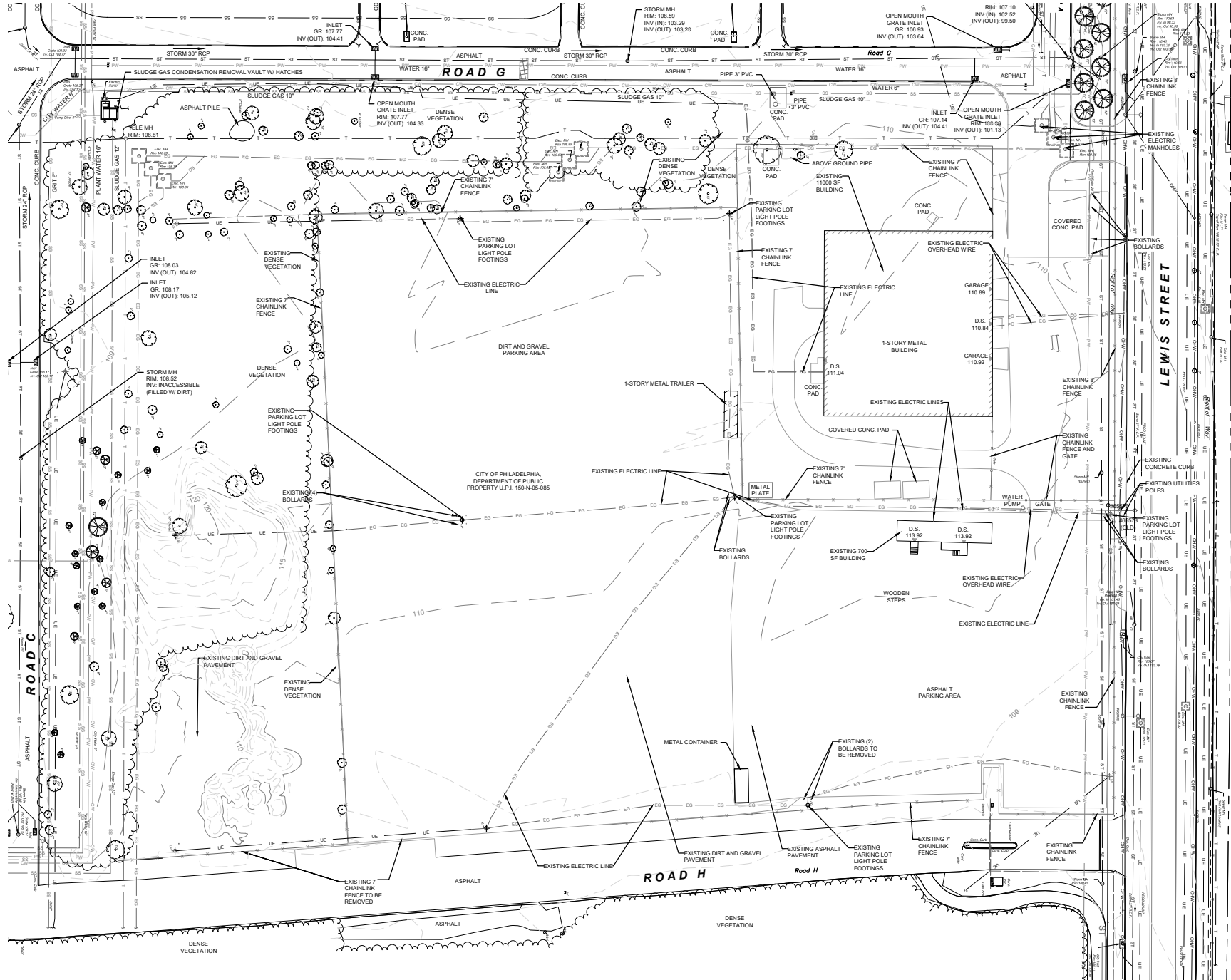
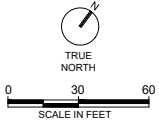


Figure 1 - Existing Site Conditions

Philadelphia Water Department

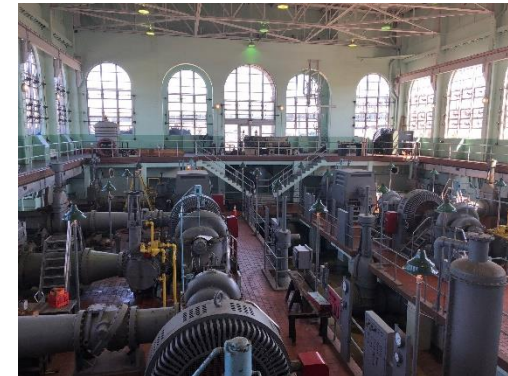
# **Lardner's Point Pumping Station Replacement/Rehabilitation**

## **Contract A – Sewer Maintenance Facility at NEWPCP**

### **Philadelphia Art Commission Construction Review**

### **Conceptual Review Presentation**

December 11, 2024

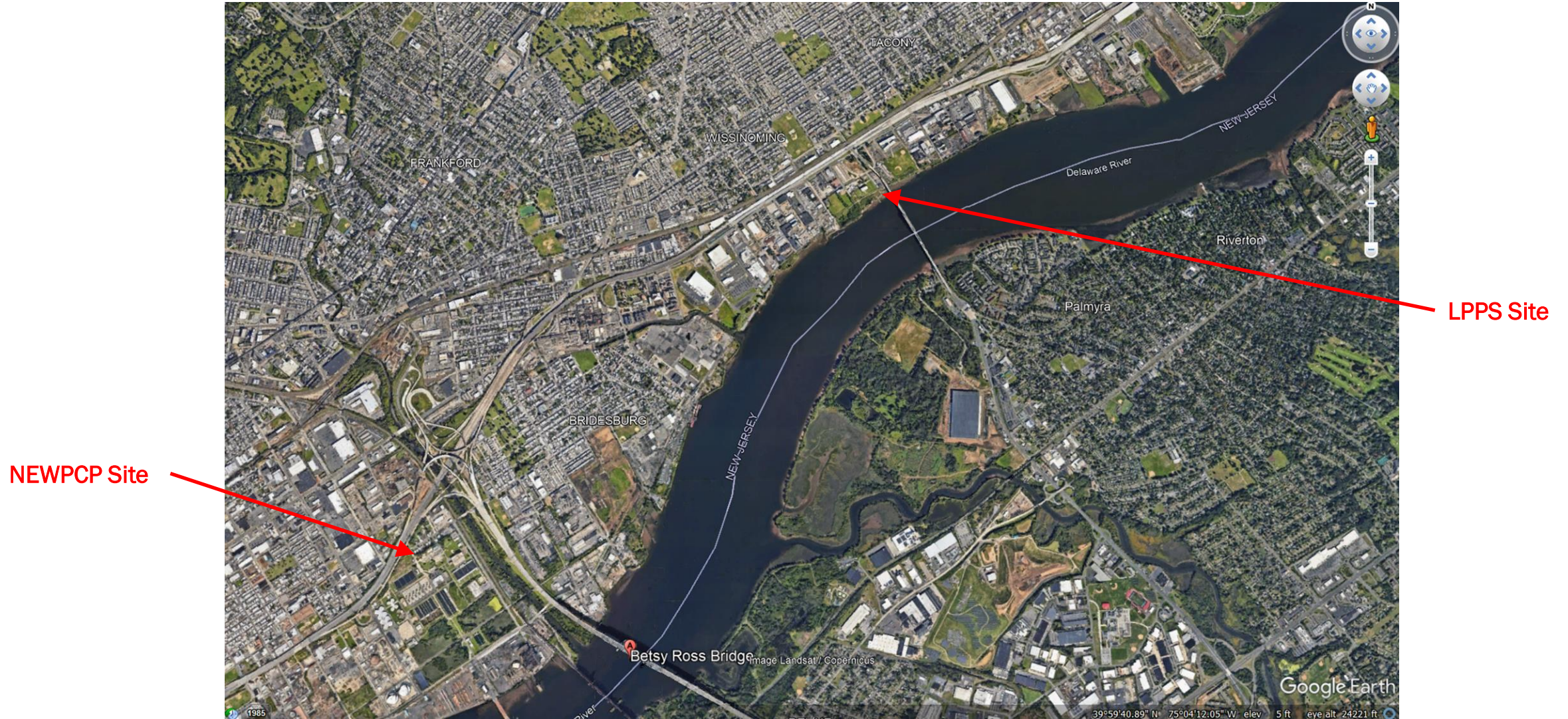


# Project Overview

- PWD has initiated a capital improvement project for construction of a new Lardner's Point Pumping Station.
- In order to construct the proposed improvements, the existing Sewer Maintenance Facilities must be relocated either temporarily or permanently to a new site.
- PWD has decided to construct new, permanent Sewer Maintenance Facilities (Contract A) within available land at the Northeast Water Pollution Control Plant (NEWPCP) site.
- Contract A will be the first phase constructed as part of the overall Lardner's Point Pumping Station Replacement/Rehabilitation Project.
- The Art Commission previously provided concept approval of the proposed improvements at the LPPS site (Contract C) on November 8, 2023



# Project Overview – Site Location Map



# Project Objectives

- Construct a sustainable, multi-use complex that will provide long-term value to PWD to support sewer maintenance field operations.
- Major components will include:
  1. Construction of a Sewer Maintenance Administration Building with personnel space for 100 field staff
  2. Construction of a Sewer Maintenance Garage
  3. Construction of miscellaneous sewer maintenance facilities including an Inlet Cleaning Dewatering Facility, material storage bins, and a yard area with parking spaces for field vehicles and equipment.
  4. Construction of a new Operations Storage Building for NEWPCP materials and equipment.





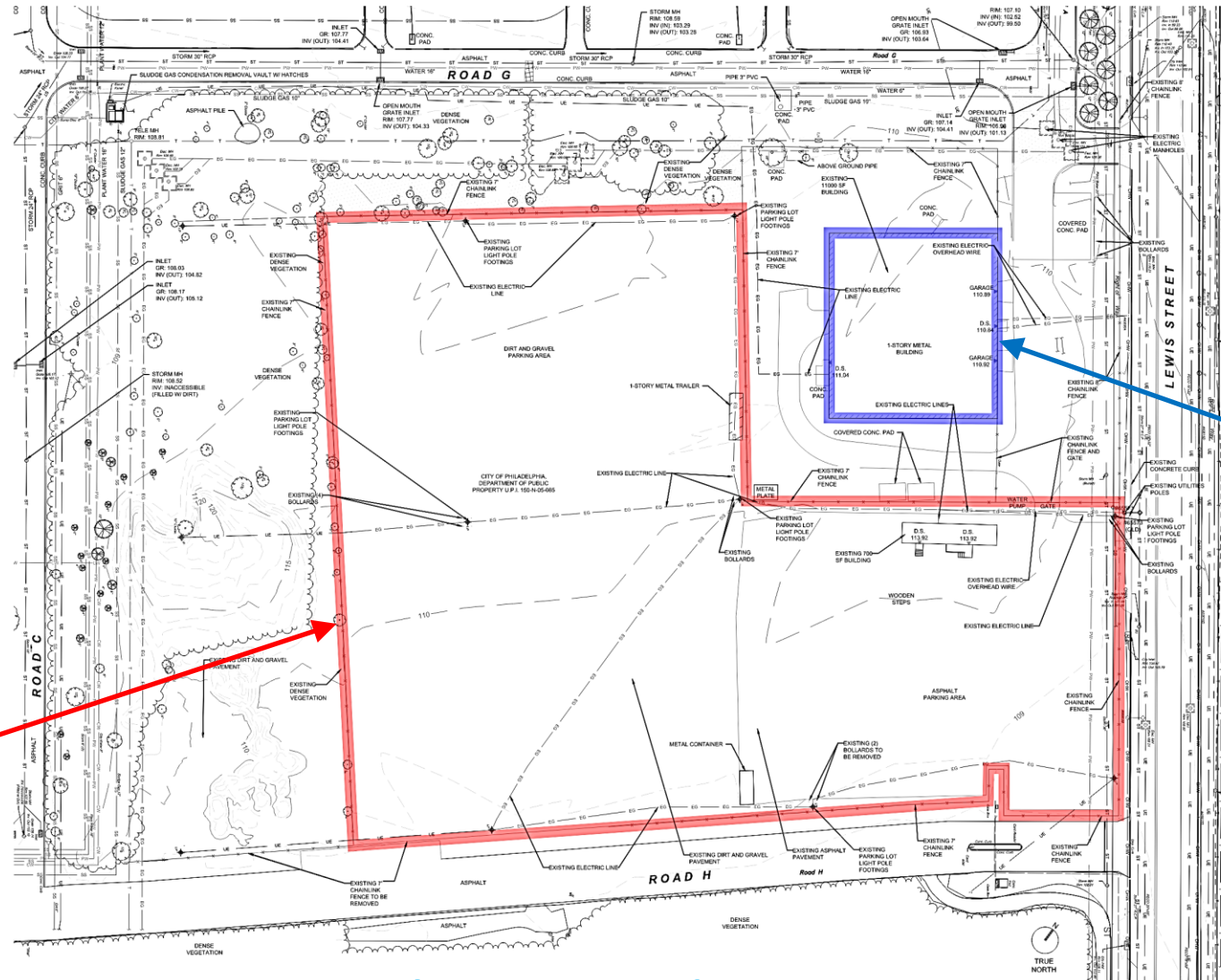
# Existing Conditions – NEWPCP Site



Aerial View - Existing Conditions

- Site Address:  
3899 Richmond Street  
Philadelphia, PA 19137
- Construction of proposed improvements within available land at the NEWPCP property.
- Existing site contains a vehicle parking area used by Fleet Management and a storage building used for NEWPCP operations.

# Existing Conditions – NEWPCP Site

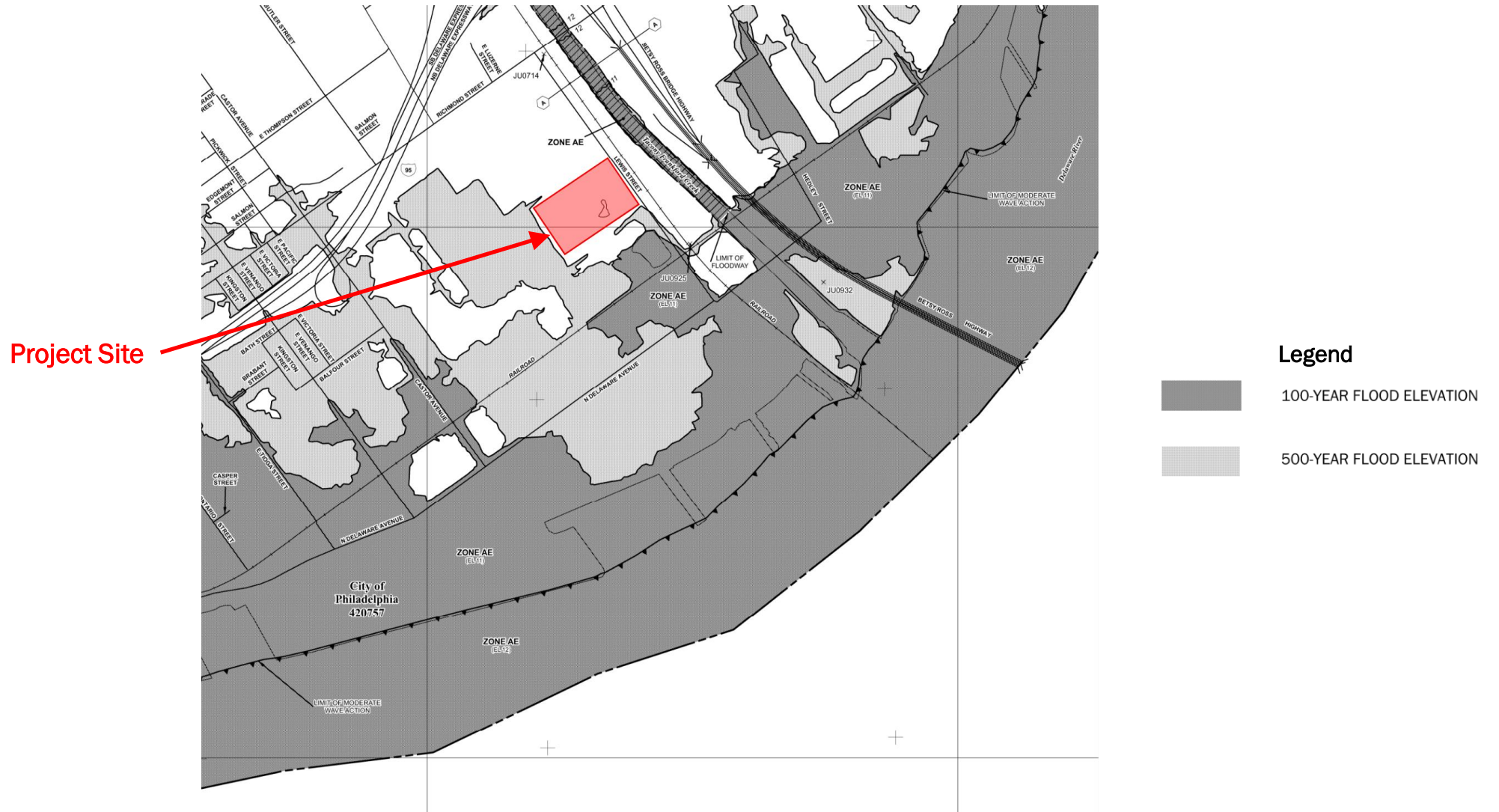


Fleet Management Area

NEWPCP Storage Building

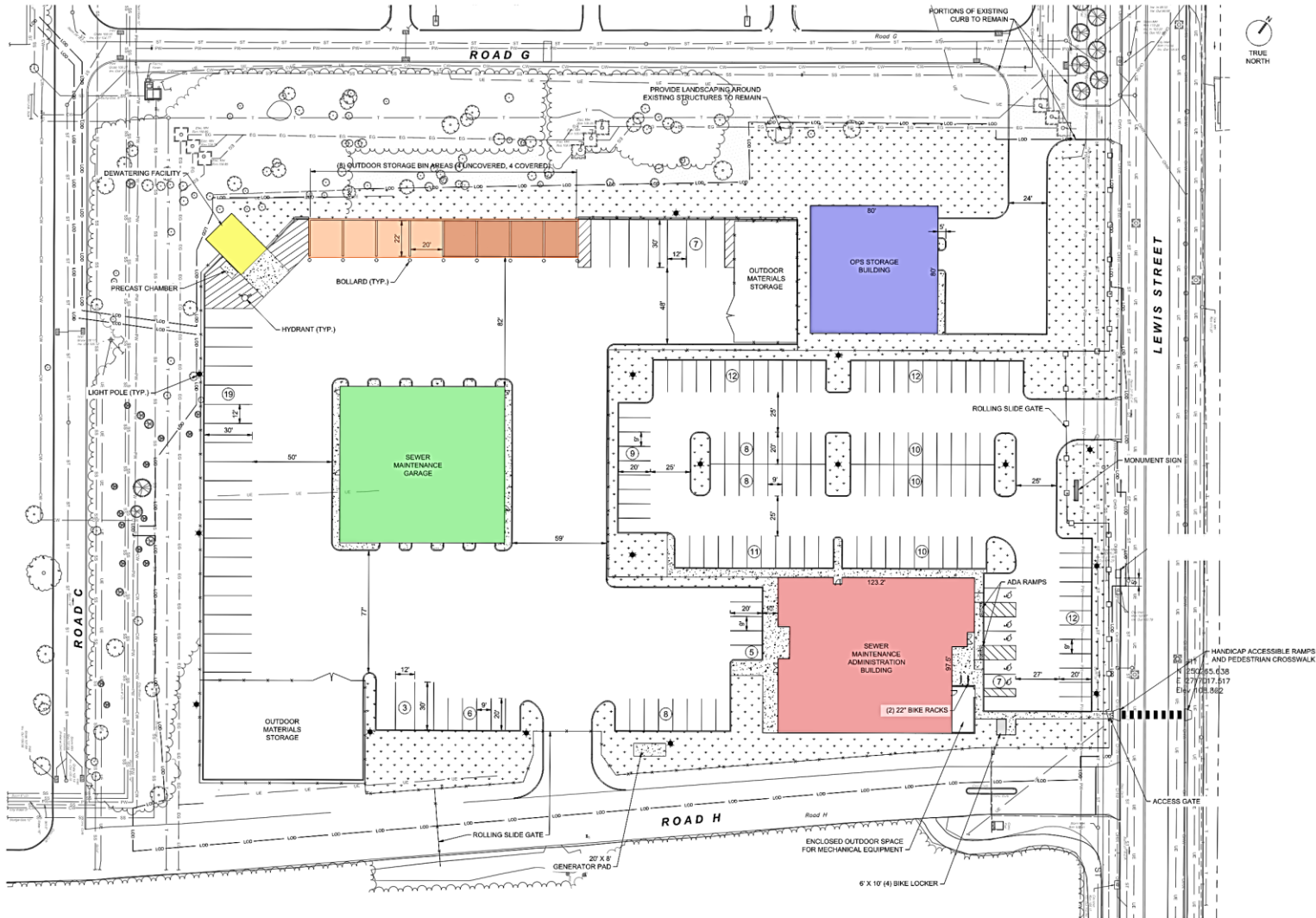
Site Plan – Existing Conditions

# Flood Insurance Rate Map



FIRM (revised 11/18/15)

# Civil/Site Design

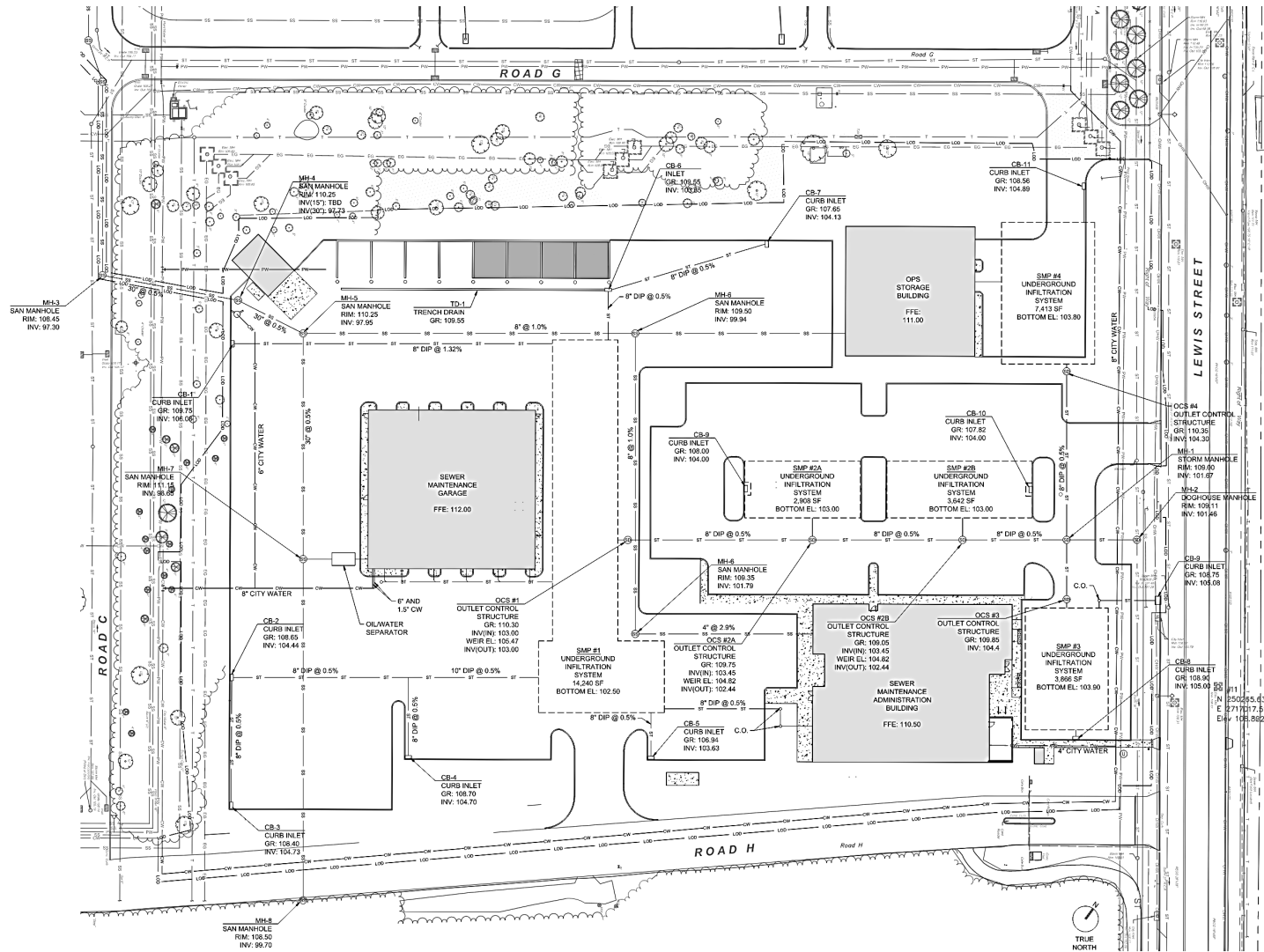


## Legend

- SEWER MAINTENANCE ADMINISTRATION BUILDING
- SEWER MAINTENANCE GARAGE
- NEWPCP OPERATIONS STORAGE BUILDING
- INLET CLEANING DEWATERING FACILITY
- MATERIAL STORAGE BINS

Site Plan – Proposed Conditions

# Civil/Site Design



Utility Plan

# Site Views – Future Conditions



Aerial View from Northeast Corner of Site

# Site Views – Future Conditions



Aerial View from Northwest Corner of Site

# Site Views – Future Conditions



Aerial View from Southwest Corner of Site



# Site Views – Future Conditions



Aerial View from Southeast Corner of Site

# SMA Exterior – East Elevation



SMA East Elevation - Day

# SMA Exterior – East Elevation



SMA East Elevation - Night

# SMA Exterior – North Elevation



SMA North Elevation - Day

# SMA Exterior – North Elevation



SMA North Elevation - Night

# SMA Exterior – West Elevation



SMA West Elevation - Day

# SMA Exterior – South Elevation



SMA South Elevation - Day

# SMG Exterior – East Elevation



SMG East Elevation



# SMG Exterior – South Elevation



SMG South Elevation

# OSB Exterior – East Elevation



OSB East Elevation - Day

# OSB Exterior – East Elevation



OSB East Elevation - Night

# OSB Exterior – North Elevation



OSB North Elevation - Day

# OSB Exterior – North Elevation



OSB North Elevation - Night

# Inlet Cleaning Dewatering Facility – Front Elevation



Inlet Cleaning Dewatering Facility Front Elevation

# Inlet Cleaning Dewatering Facility – Side Elevation



Inlet Cleaning Dewatering Facility Side Elevation

# Material Storage Bins – Front Elevation



Material Storage Bins Front Elevation



# Façade Materials & Finishes

## Sewer Maintenance Administration Building (SMA)



NORTH ELEVATION



1 FLUSH METAL PANEL  
SLATE GRAY



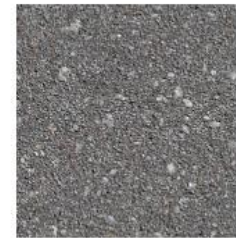
2 CORRUGATED METAL PANEL  
ARABIAN BLUE



3 ALUMINUM STOREFRONT  
ANODIZED ALUMINUM



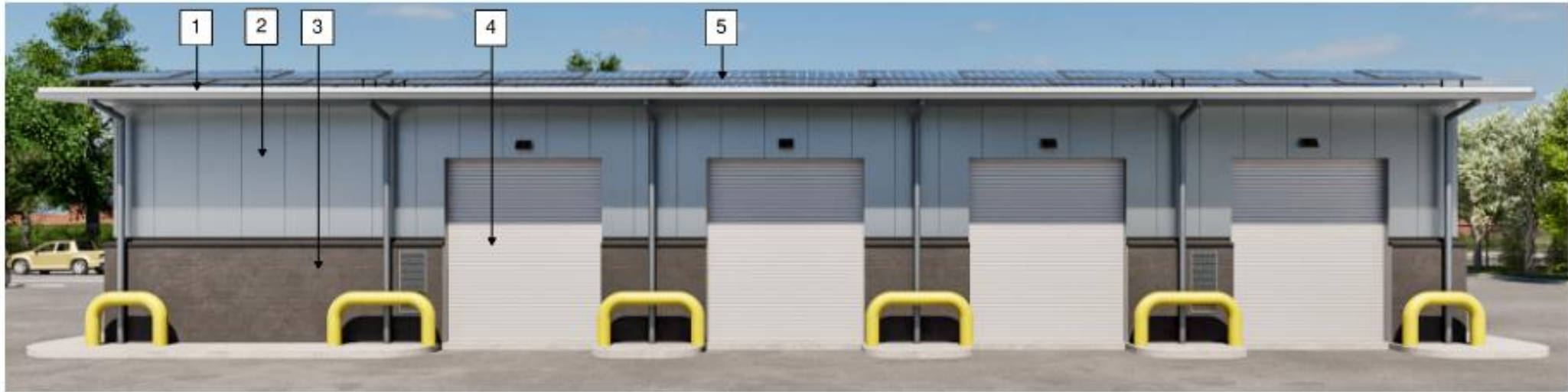
4 BRICK VENEER  
EBONITE VELOUR



5 PRE-CAST SILLS / BASE  
CHARCOAL ANTIQUED

# Façade Materials & Finishes

## Sewer Maintenance Garage (SMG)



SOUTH ELEVATION



1 METAL ROOF / FASCIA  
COOL SOLAR WHITE



2 INSULATED METAL PANEL  
COOL GRAY



3 GROUND FACE CMU  
SHADOW GRAY



4 COILING OVERHEAD DOOR  
WHITE



5 SOLAR ROOF PANELS  
ANODIZED ALUMINUM / BLACK

# Façade Materials & Finishes

## Operations Storage Building (OSB)



EAST ELEVATION



1 METAL ROOF / FASCIA  
COOL SOLAR WHITE



2 INSULATED METAL PANEL  
COOL GRAY



3 GROUND FACE CMU  
SHADOW GRAY



4 COILING OVERHEAD DOOR  
WHITE



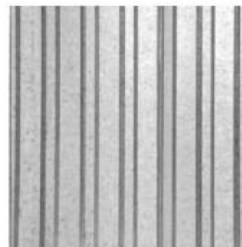
5 SOLAR ROOF PANELS  
ANODIZED ALUMINUM / BLACK

# Façade Materials & Finishes

## Inlet Cleaning Dewatering Facility



1 EXPOSED CONCRETE  
NATURAL



2 CORRUGATED STEEL DECK  
GALVANIZED



3 WELDED WIRE MESH  
GALVANIZED



4 METAL ROOF / FASCIA  
COOL SOLAR WHITE

# Façade Materials & Finishes

## Material Storage Bins



SOUTH ELEVATION



1 METAL ROOF / FASCIA  
COOL SOLAR WHITE



2 INSULATED METAL PANEL  
COOL GRAY

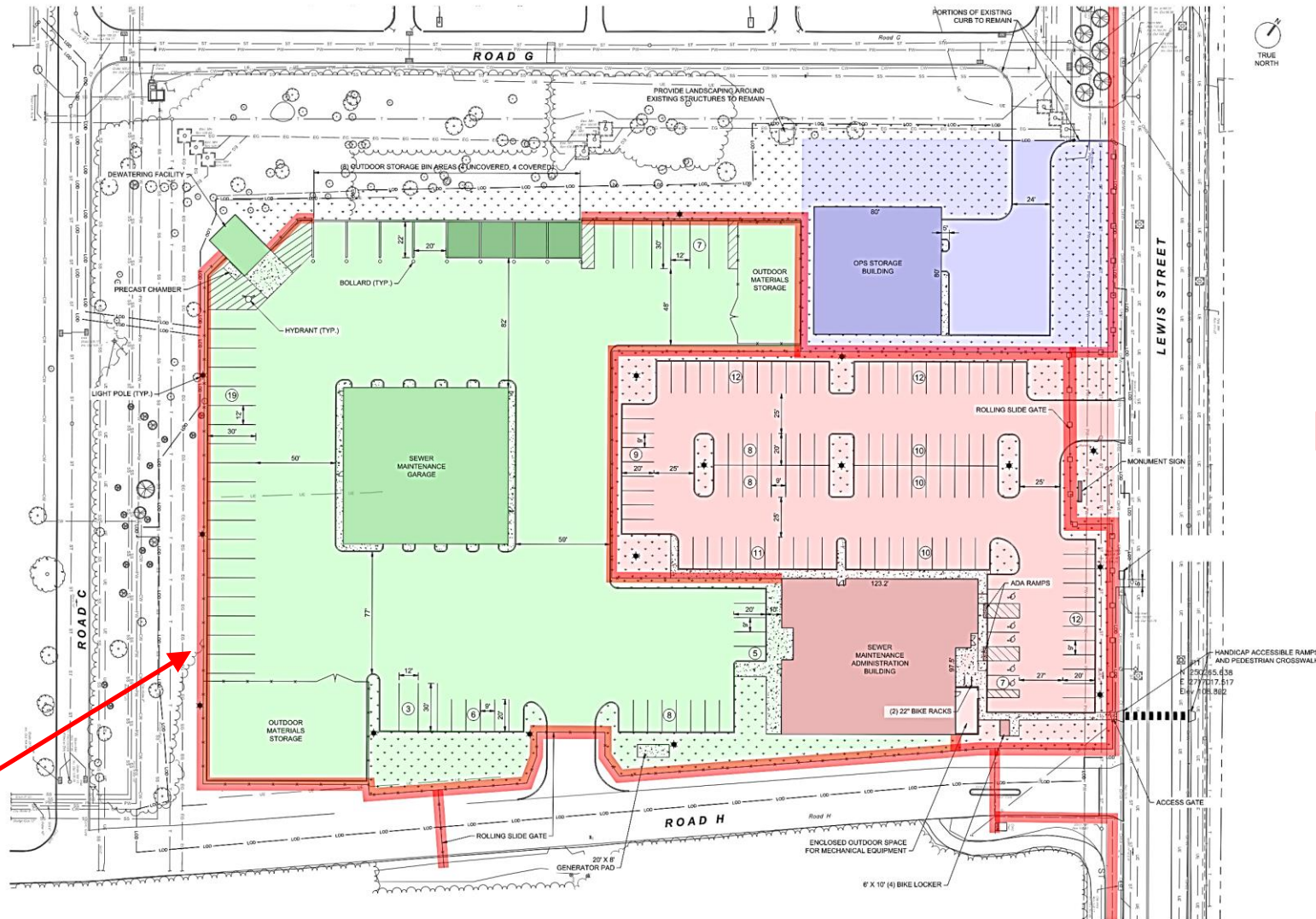


3 EXPOSED CONCRETE  
NATURAL



4 COILING OVERHEAD DOOR  
WHITE

# Site Circulation/Security



Fence Line

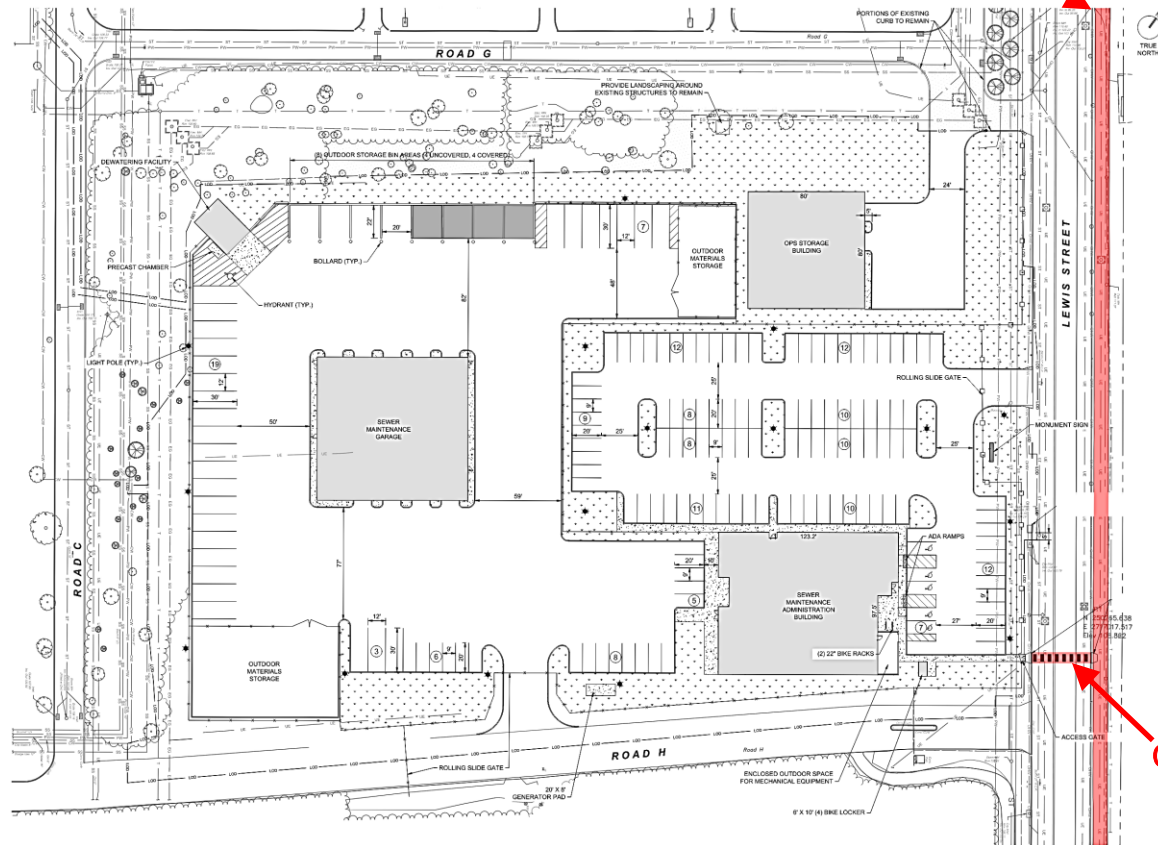
## Legend

- SEWER MAINTENANCE ADMINISTRATION AREA
- SEWER MAINTENANCE YARD
- NEWPCP OPERATIONS AREA

Site Plan

# Public Benefit/Connectivity

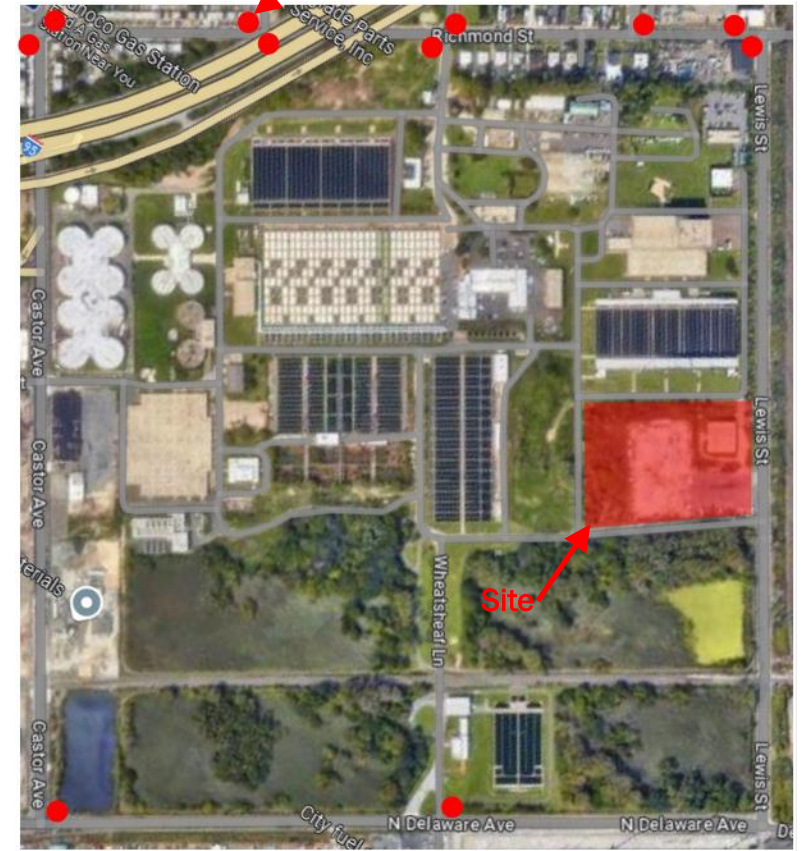
Frankford Creek Greenway



Crosswalk

Site Plan

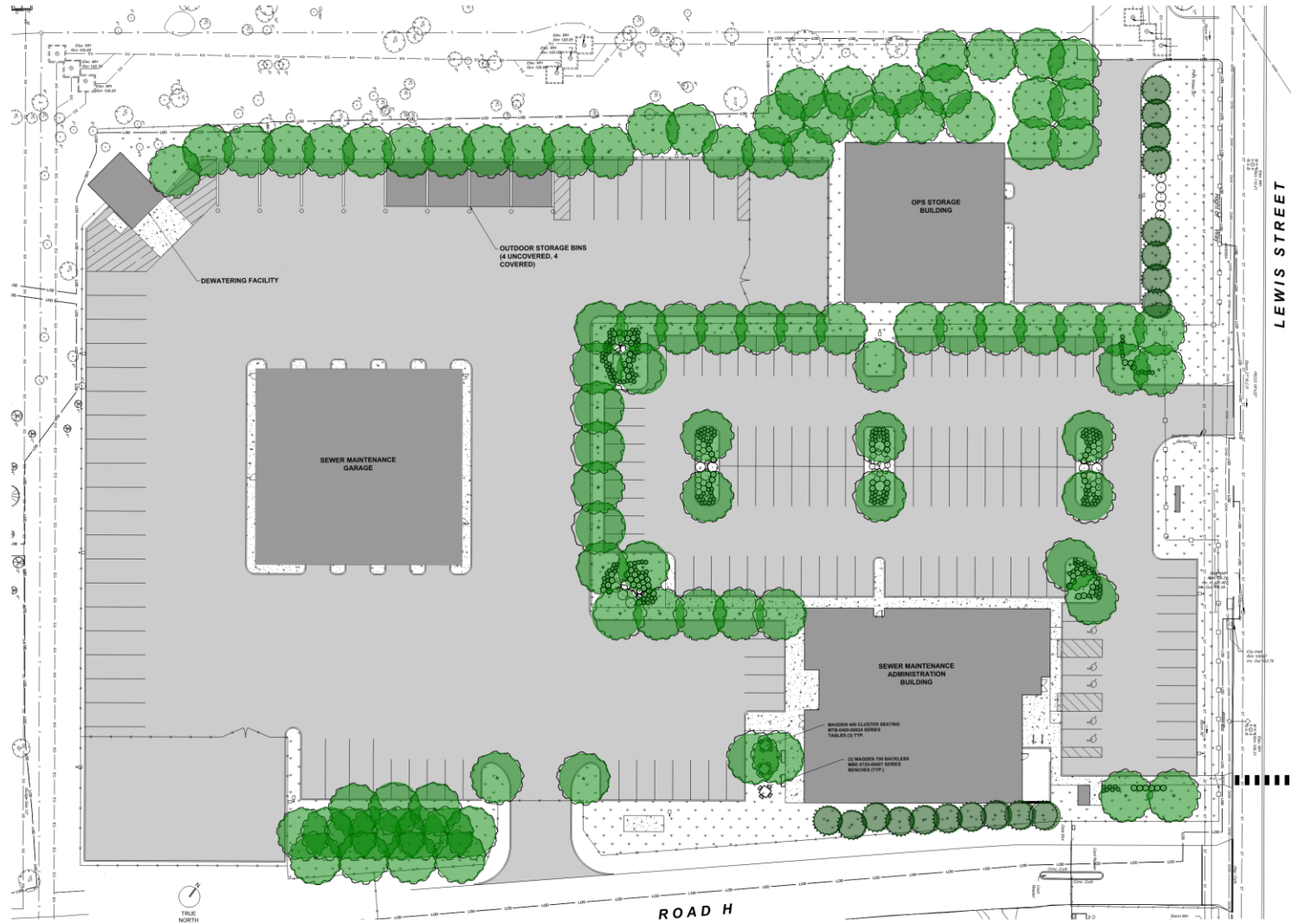
Bus Stop



Site

Public Transportation Map

# Landscape Plan



## Landscape Features:

1. Yard Trees and Parking/Landscape Buffers
2. Interior Landscape Areas
3. Front Entry Sign
4. Landscape Plaza

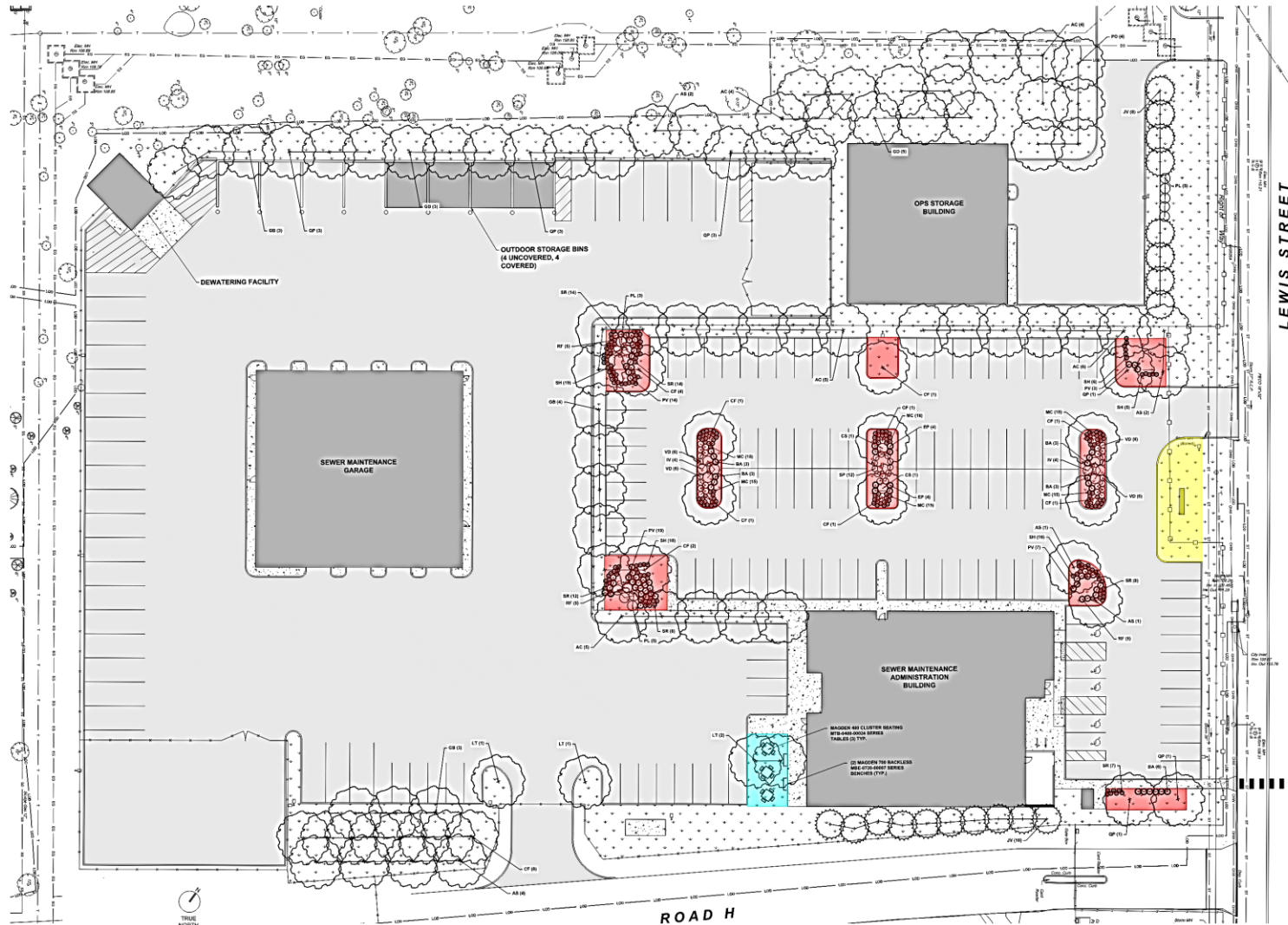
## Legend



Tree Plan



# Landscape Plan



## Landscape Features:

1. Yard Trees and Parking/Landscape Buffers
2. Interior Landscape Areas
3. Front Entry Sign
4. Landscape Plaza

## Legend

- INTERIOR LANDSCAPE AREAS
- FRONT ENTRY SIGN
- LANDSCAPE PLAZA

Planting Plan

---

# Appendix

# Site Photographs



View Looking South On Lewis Street Near Road G



View Looking North On Lewis Street Near Road H



View Looking West On Lewis Street Near Fleet Management Lot Entrance



View Looking West On Lewis Street Near Road G Site Entrance

# Site Photographs



View Looking West From Road G/Lewis Street



View Looking South From Road G/Lewis Street



View Looking South From Road G/Road C



View Looking East From Road G/Road C

# Site Photographs



View Looking East From Road C/Road H



View Looking North From Road C/Road H



View Looking West From Road H/Lewis Street



View Looking North From Road H/Lewis Street

# Landscape Plan – Front Entry Sign

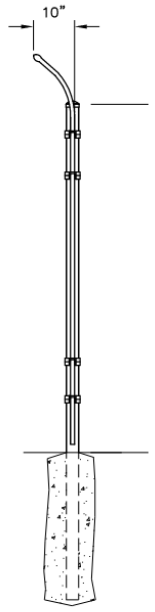
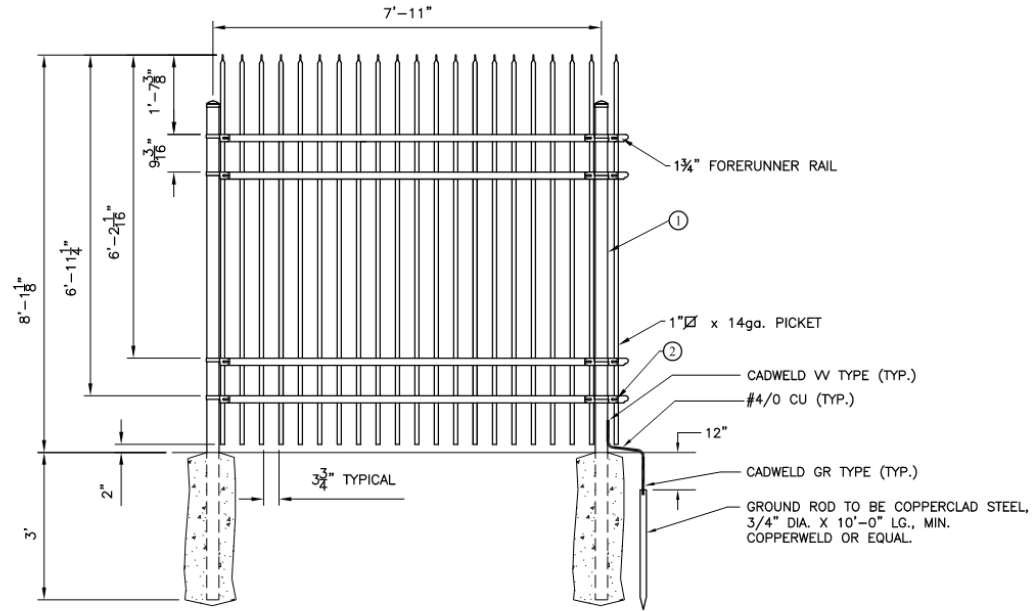


Elevation View

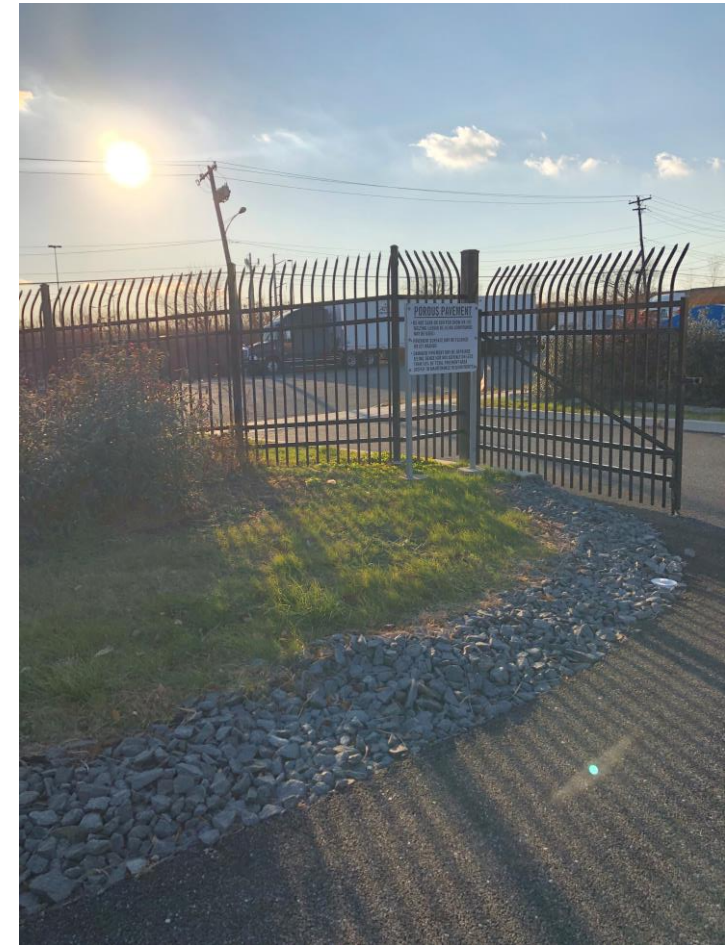


3-D View

# Landscape Plan - Site Fencing



2  
 C302  
 TYPICAL ORNAMENTAL FENCE DETAIL  
 1/2" = 1'-0"



Site Fencing

# Landscape Plan – Schedules

## TREE SCHEDULE

QUANTITY	KEY	COMMON NAME	BOTANICAL NAME	CALIPER SIZE
24	AC	SERVICEBERRY	AMELANCHIER CANADENSIS	6'-8"
10	AS	SUGAR MAPLE	ACER SACCHARUM	2 - 2 ½" B&B
18	JV	EASTERN RED CEDAR	JUNIPERUS VIRGINIANA	6'-8"
21	CF	FLOWERING DOGWOOD	CORNUS FLORIDA	2 - 2 ½" B&B
13	GB	GINKO 'PRINCETON SENTRY'	GINKO BILOBA 'PRINCETON SENTRY'	2 - 2 ½" B&B
5	GD	KENTUCKY COFFEETREE	GYMNOCLADUS DIOICUS	2 - 2 ½" B&B
4	LT	TULIP TREE	LIRIODENDRON OCCIDENTALIS	2 - 2 ½" B&B
4	PO	SYCAMORE	PLATANUS OCCIDENTALIS	2 - 2 ½" B&B
12	QP	PIN OAK	QUERCUS PALUSTRIS	2 - 2 ½" B&B

## PLANT SCHEDULE

QUANTITY	KEY	COMMON NAME	BOTANICAL NAME	SIZE
<b>SHRUBS</b>				
2	CS	RED TWIG DOGWOOD	CORNUS SERICEA	#3 CONT.
8	IV	WINTERBERRY HOLLY	ILEX VERTICILLATA	#3 CONT.
13	PL	CHERRY LAUREL	PRUNUS LAUROCERASUS	#3 CONT.
12	SP	MEADOWSWEET	SPIREA JAPONICA	#3 CONT.
24	VD	ARROWWOOD VIBURNUM	VIBURNUM DENTATUM	#3 CONT.
<b>PERENNIALS / GRASSES</b>				
18	BA	BLUE FALSE INDIGO	BAPTISIA AUSTRALIS	#1 CONT.
8	EP	PURPLE CONEFLOWER	ECHINACEA PURPUREA	#1 CONT.
15	RF	ORANGE CONEFLOWER	RUDBECKIA FULGIDA	#1 CONT.
63	SR	ROUGHLEAF GOLDENROD	SOLIDAGO RUGOSA	#1 CONT.
97	MC	PINK MUHLY GRASS	MUHLENBERGIA CAPILLARIS	#1 CONT.
43	PV	SWITCH GRASS	PANICUM VIRGATUM	#1 CONT.
56	SH	PRAIRIE DROPSEED	SPOROBOLUS HETEROLEPIS	#1 CONT.



# Energy and LEED Certification Goals

Project strives to meet the following City/PWD energy and sustainability goals:

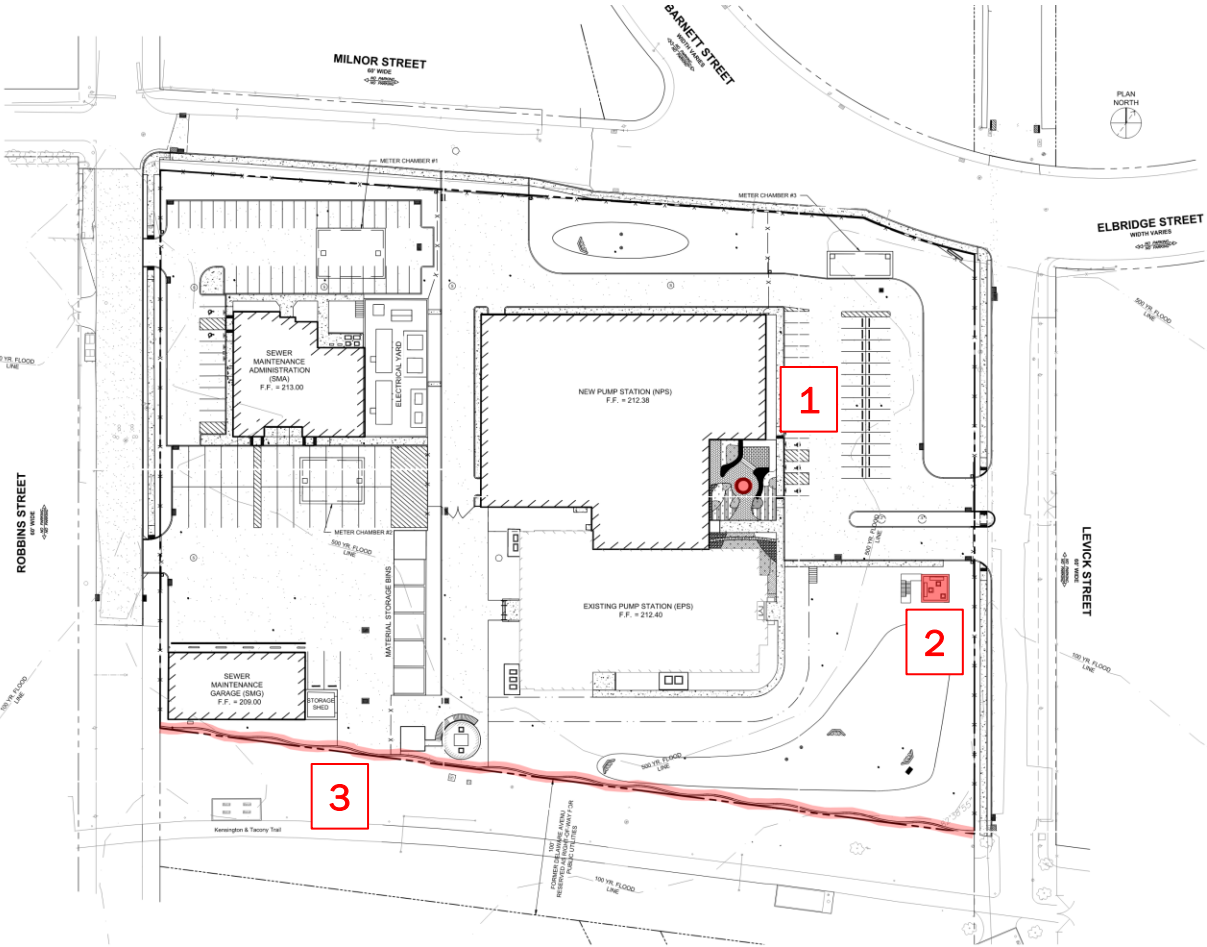
- PWD Utility Wide Strategic Energy Plan
- City Municipal Energy Master Plan
- City of Philadelphia Bill No. 080025
- Municipal High Performance Building Guidelines

Goal: LEED Silver Certification



PV Scenario – 100% of Annual Energy Usage

# Percent for Art Components – LPPS Site



LPPS Site Plan

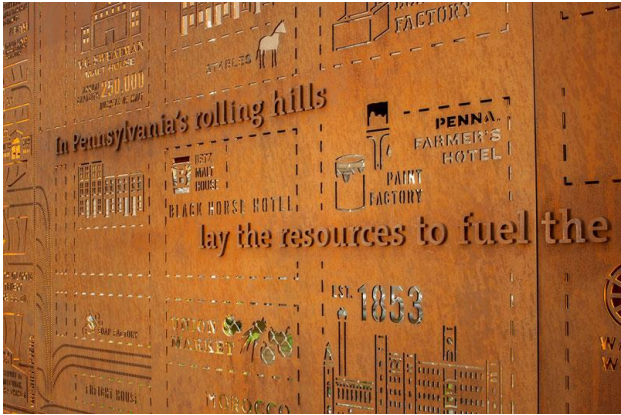
### Potential Features:

1. Artwork/Sculpture at Entrance Plaza
2. Artwork on Walls of Junction Chamber 2
3. Curved Site Fence along K&T Trail

- Coordination with Creative Philadelphia ongoing regarding Percent for Art components.
- Creative Philadelphia considering the curved site fence concept.
- Creative Philadelphia considering locating all public art on the LPPS site since both construction contracts are part of the overall LPPS project.

# Percent for Art Components – LPPS Site

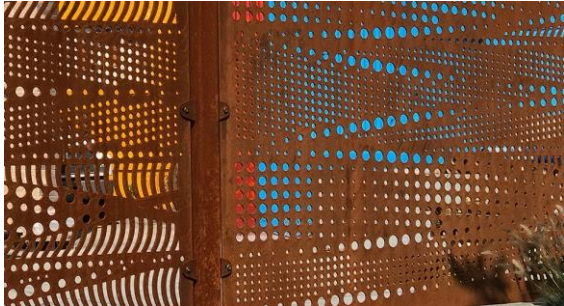
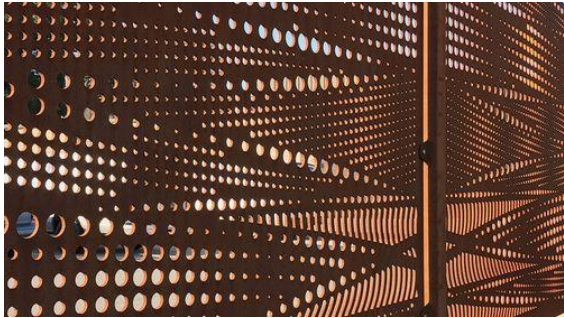
The Rail Park



Artworks by Richard Serra



Hagerstown Cultural Trail



Site Fencing Examples