

Memorandum



To: Alex Smith, Director Art Commission
From: Jane Anderson, Project Coordinator, Capital Program Office
Date: December 4, 2024
Re: Request for Art Commission Administrative Approval

We respectfully request administrative approval for improvements at Shissler Playground. This PPR site is located at 1800 Blair Street, Philadelphia, PA 19125.

The following brief describes the extent of work:

Shissler Playground is currently in design for proposed playground replacement. The current proposal will replace existing tot and junior playground equipment and safety surface within an equivalent footprint, as well as add a play mound with climbers. Play equipment color choice and equipment style was determined by community's input. The proposal will also include the replacement of wooden benches with recycled plastic benches and accessible game and picnic tables, which were requested by the community. Two community meetings and an online survey were conducted to gain community input.

*PPR arborists have determined that a *Prunus serrulata* 'Kwanzan' tree should be removed prior to construction. PPR district arborist Dave Cupps states that the "tree has some significant issues such as rotted spots right in trunk and severe girdling roots and has lean". Other site trees in the immediate playground area will remain and be protected during construction, these include heritage Sycamore (*Platanus occidentalis*) and Slippery Elm (*Ulmus rubra*) as well as additional Kwanzan cherry trees (*Prunus serrulate* 'Kwanzan'). One tree pit will be expanded to allow root growth and broken concrete will be replaced.*

Please see the next pages for existing site photos, site aerial, tree removal plan, proposed playground layout, site furniture selections, and proposed playground renderings for your understanding of the site and scope.

The Project budget is \$360,000.

cc: Pedro Pinto, Deputy Director, Capital Program Office
Leigh Ann Campbell, Deputy Commissioner, PPR
Francesco Cerrai, Project Director
Jane Anderson, Project Coordinator
File: Project #16-24-7178-01



SHISSLER PLAYGROUND 1800 BLAIR STREET
DECEMBER 2024

EXISTING CONDITIONS



SHISSLER PLAYGROUND 1800 BLAIR STREET
DECEMBER 2024



SCOPE OF WORK:

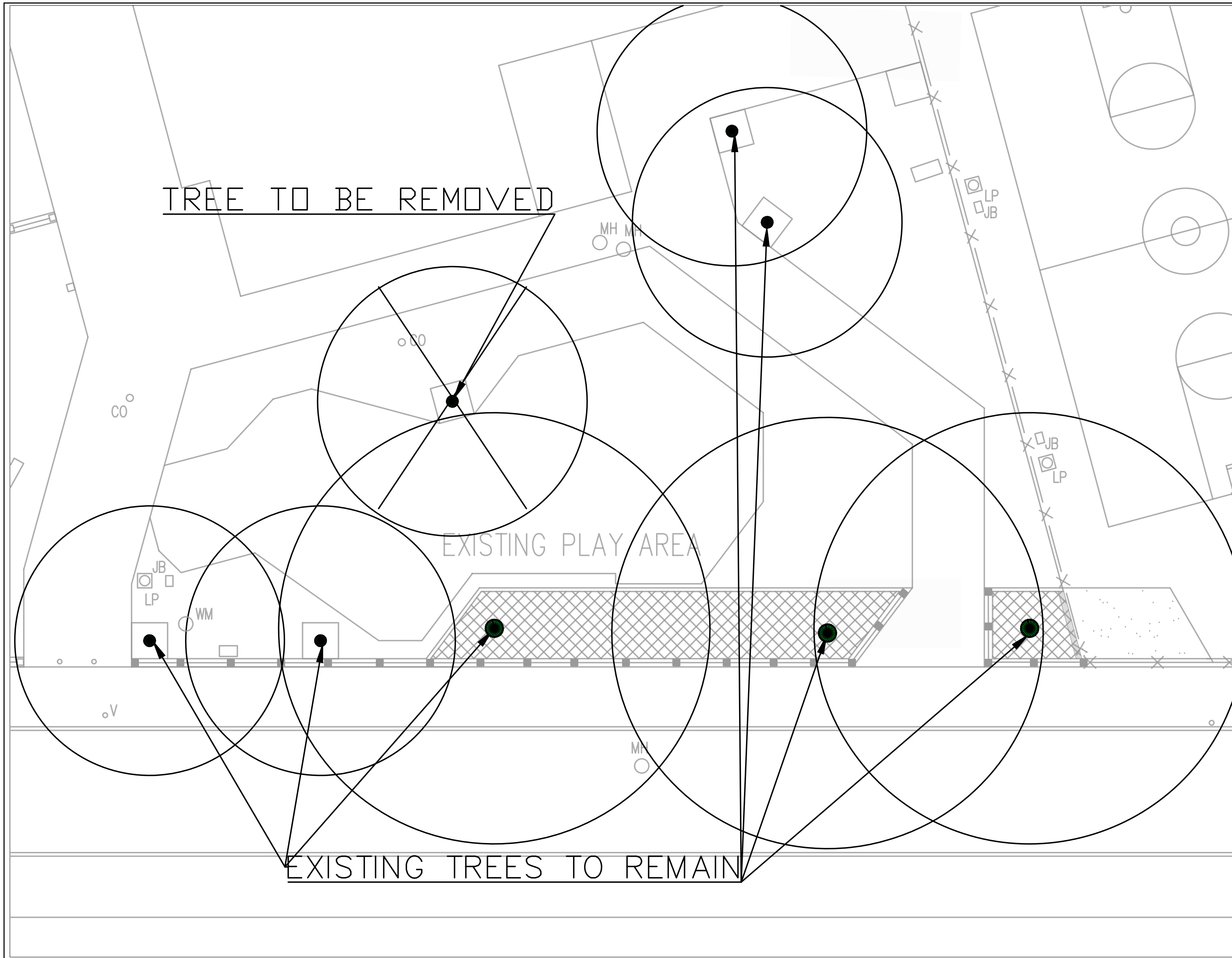
- Playground Equipment Replacement
- Safety Surface Replacement
- Site Furniture Replacement
- Minimal Concrete Replacement

Approximate Limit of Disturbance

SHISSLER PLAYGROUND 1800 BLAIR STREET
DECEMBER 2024

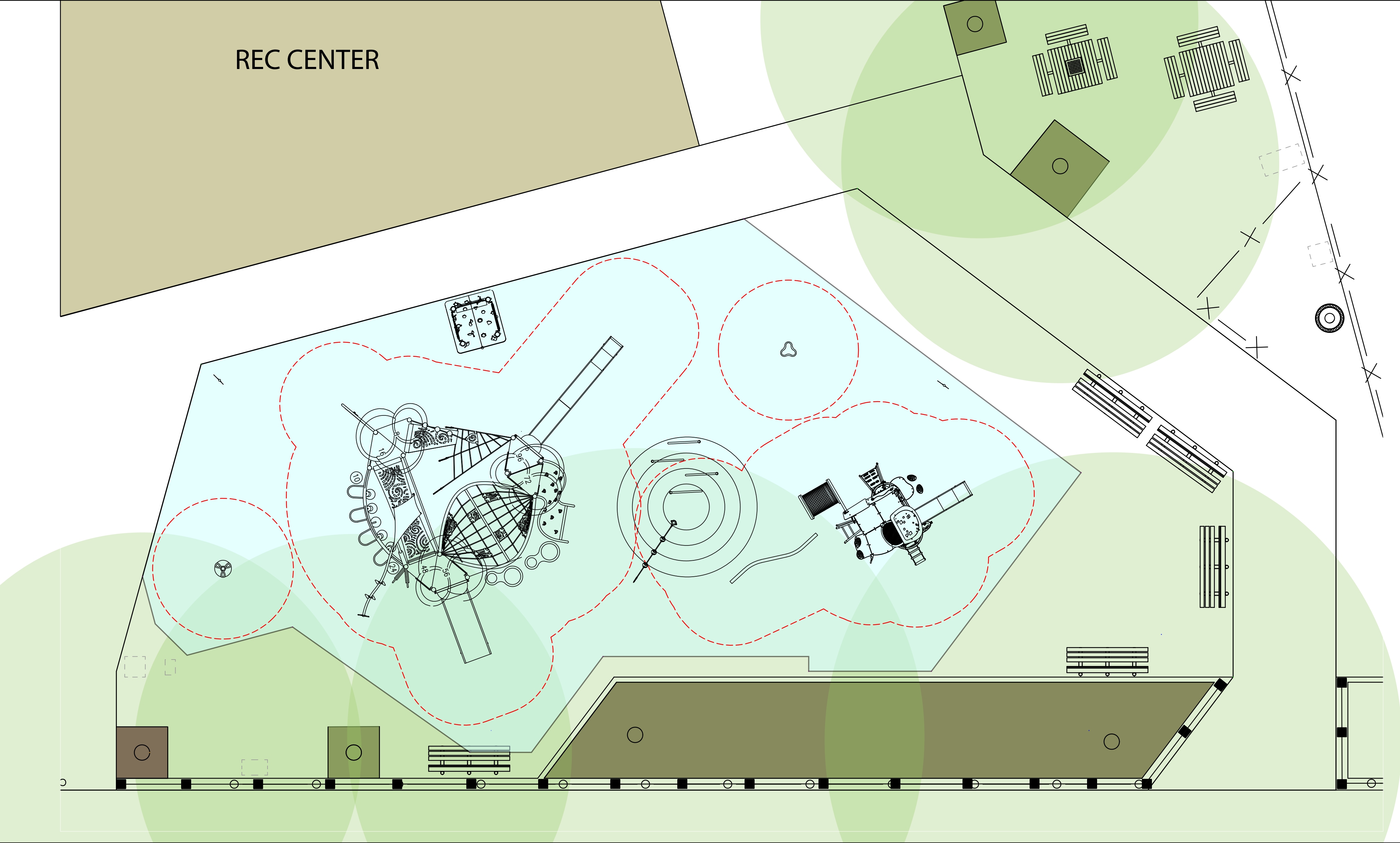


TREE REMOVAL



SHISSLER PLAYGROUND 1800 BLAIR STREET
DECEMBER 2024

PROPOSED SITE PLAN

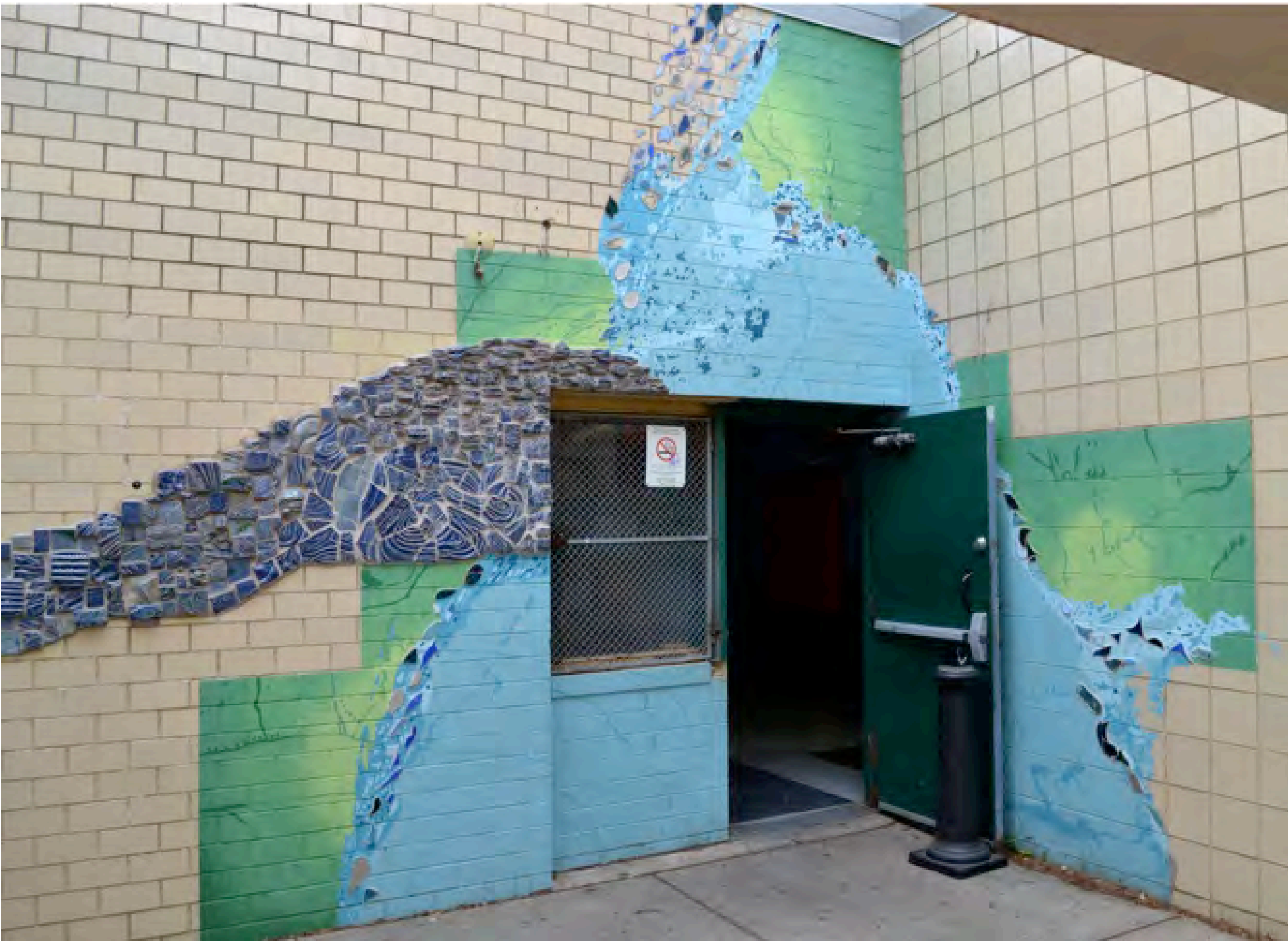



SHISSLER PLAYGROUND 1800 BLAIR STREET
DECEMBER 2024





**PHILADELPHIA
PARKS &
RECREATION**


EQUIPMENT COLOR PALETTE INSPIRATION





- 


ProShield Post
Seafoam
- 

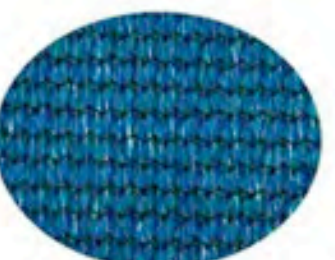
ProShield Clamp
Sprout
- 

ProShield Component
Peacock
- 

Permalene Primary
Sky
- 

Permalene Secondary
Sprout
- 

Polyethylene Primary
Sprout
- 

TenderTuff™
Gray
- 

Shade Fabric Primary
Lagoon

playlsi.com ©2023



SHISSLER PLAYGROUND 1800 BLAIR STREET
DECEMBER 2024



PLAYGROUND RENDERING



SHISSLER PLAYGROUND 1800 BLAIR STREET
DECEMBER 2024



PLAYGROUND RENDERING



Shissler Playground

1185290-02-02-03 • 07.02.2024



©2024 Landscape Structures. All Rights Reserved.

SHISSLER PLAYGROUND 1800 BLAIR STREET
DECEMBER 2024



PLAYGROUND RENDERING



SHISSLER PLAYGROUND 1800 BLAIR STREET
DECEMBER 2024



Shissler Playground

1185290-02-02-02 • 07.02.2024



©2024 Landscape Structures. All Rights Reserved.

SITE FURNITURE



SHISSLER PLAYGROUND 1800 BLAIR STREET
DECEMBER 2024