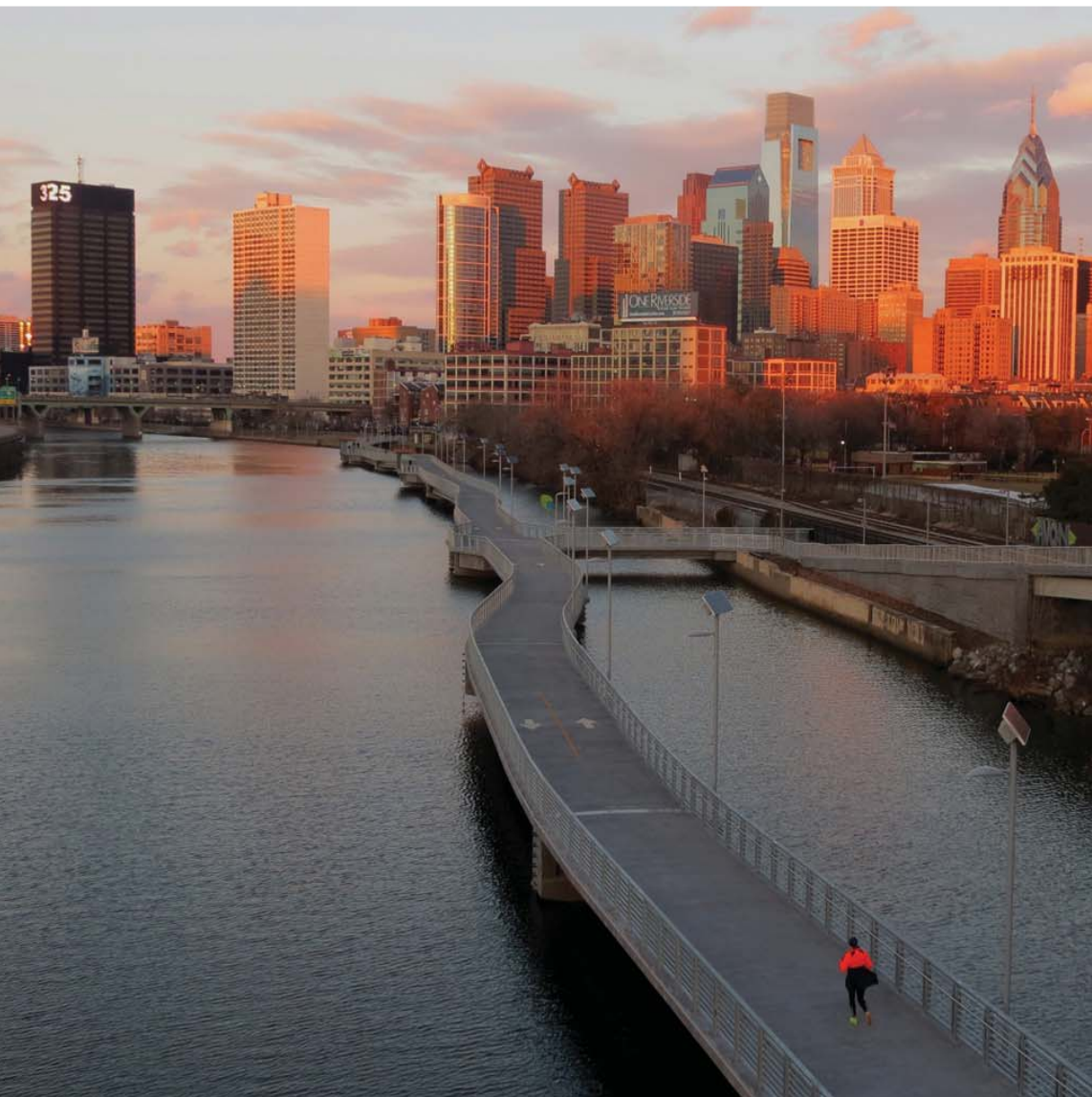


PHILADELPHIA TRAIL PLAN 2015 UPDATE



1. YEAR IN TRAILS
2. PRIORITIES & PROJECTS
3. PHILADELPHIA TRAIL COMMITTEE
4. NEXT STEPS

Schuylkill Banks Boardwalk - Schuylkill River Development Corporation

Cover Rendering - Grays Ferry Swing Bridge, Schuylkill River Development Corporation

THE YEAR IN TRAILS

2015 Trail Plan Update Purpose

The Philadelphia Trail Master Plan was adopted by the Planning Commission in June of 2013 and there was an annual update in December of 2014. This 2015 Philadelphia Trail Plan Update reflects the work in the past year of the Philadelphia Trail Committee and our non-profit trail development partners towards expanding the Philadelphia trail network.

The Trail Master Plan is a recommendation of Philadelphia2035, Philadelphia's Comprehensive Plan, in the Renew section under Goal 6.1 Watershed Parks and Trails: complete, expand, and connect watershed parks and trails in the City and the region.

The Trail Master Plan process began in the spring of 2011 as a joint effort of the Philadelphia City Planning Commission and Philadelphia Parks & Recreation, in collaboration with the Mayor's Office of Transportation & Utilities. Due to limited funding for trail and park projects, the City recognized the need for prioritizing proposed trail projects to serve Philadelphians citywide and to best use available planning, design, and construction funding.

The goals of the Philadelphia trail network are fourfold: connectivity, safety, encouragement, and open space.

The purpose of the City trail planning process is to ensure that proposed trail development projects in Philadelphia meet the goals of the trail network. The 2013 Plan quantifies and inventories existing trail facilities, identifies the alignment, demand, and City priority for proposed trail projects, and clarifies the process of trail development and construction in Philadelphia.

The Plan includes a detailed analysis of proposed projects citywide and a priority ranking for each proposed project. This report updates the priority analysis to reflect changes in projects in the last year. In addition, this report includes information on high impact trail projects, details on Philadelphia Trail Committee actions, a listing of funding retained for Philadelphia trails in the last year, and next steps for the Trail Committee.

Baxter Trail Under Construction - Delaware River City Corporation



Excerpt from:
Philadelphia2035
Citywide Vision

Goal 6.1:

Complete, expand, and connect watershed parks and trails in the City and the region.

Objective 6.1.1:

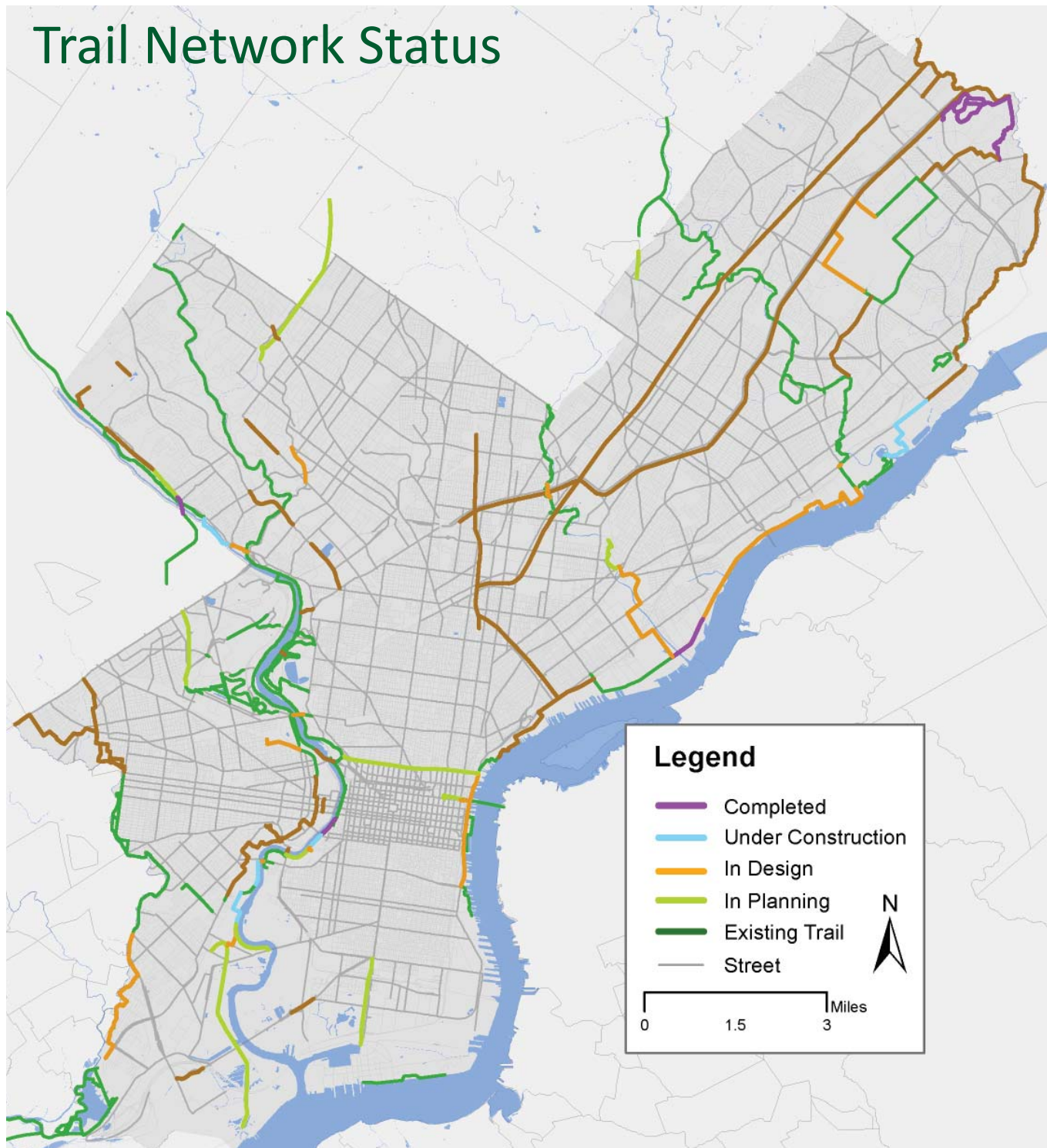
Create a citywide trails master plan to coordinate the planning and construction of trail systems within Philadelphia.

Objective 6.1.3:

Create a trail corridor network that connects parks, neighborhoods, and trails citywide.



Trail Network Status



23
COMPLETED
MILES

3.7
UNDER
CONSTRUCTION

11
IN PLANNING

19
IN DESIGN

Trail Network Progress in 2015

The map and table in this section reflect the updated status of Philadelphia trails since the 2014 Plan update. The map reflects the status of trail projects citywide, including several trail projects that are now complete or are in final design. These segments are no longer included in the priority analysis, since they have reached or are nearing completion.

The 2015 Proposed Trail Network includes eight trail projects new to the plan. Four of these, the Cobbs Creek Connector segments, were reflected as one segment in previous plans but are now at separate stages of development and therefore are now tracked separately. The Frankford Creek Greenway and Kensington & Tacony Trail are similar situations, previously one segment and now several for tracking purposes. The Tacony Holmesburg Trail was previously named North Delaware Greenway Gap, but now is renamed to more accurately reflect boundaries and neighborhood details.

There were more than 23 miles of trail completed between the beginning of the planning process in 2011 and the end of 2015. Notable completed projects in 2015 include the Manayunk Bridge Trail and the North Delaware Avenue Extension Sidepath.

There are more than 4 miles of trail currently under construction, including a major link along the North Delaware Trail, the Baxter Trail, which will connect from Pennypack on the Delaware to Pleasant Hill Park. Two sections of the Schuylkill River Trail are under construction, from South Street to Christian Street and Bartram's Mile, respectively.

Nearly 19 miles of trail are in preliminary or final design, including portions of the Tacony Creek Trail under Roosevelt Boulevard, Frankford Creek Greenway Phase 1 and 2, and K & T Trail Phases 1 and 2.

2015 Proposed Network

Added to Plan

- Cobbs Creek Connector A
- Cobbs Creek Connector B
- Cobbs Creek Connector C
- Cobbs Creek Connector D
- K & T Trail 1
- K & T Trail 2
- Tacony Holmesburg Trail
- Frankford Creek Greenway 1
- Frankford Creek Greenway 2
- Frankford Creek Greenway 3

Deleted from Plan

- Cobbs Creek Trail
- N Delaware Greenway B



Funding Secured in 2015

The City of Philadelphia and trail development partners secured more than \$14.5 million in state, federal, and local funding for construction, design, and planning studies for trail projects in 2015. From 2013-2014, Philadelphia projects received more than \$6 million. This funding will help to complete the trail network and move forward more than a dozen projects.

Sources include the federal Transportation Investment Generating Economic Recovery (TIGER) program, the William Penn Foundation/Delaware Valley Regional Planning Commission Regional Trails Program, the Paul S. Sarbanes Transit in Parks Program, and others. Several funding program award announcements are pending at the date of the release of this plan, including the Department of Community and Economic Development Multimodal Transportation Fund and the Department of Conservation and Natural Resources Community Conservation Partnerships Program. Many trail projects in Philadelphia receive funding from multiple programs, which reflects the leveraging opportunities for public and private funding across multiple sources. Finally, existing trails receive maintenance funding from City capital and other sources.

In 2015, due to the work of the Regional Trail Group at the Delaware Valley Regional Planning Commission, the PA Transportation Improvement Program (TIP) added a line item for construction of trail projects. While no funding has come through yet for construction for TIP funded projects, this allows named projects to be considered for design funding, as a construction source is identified.

Philadelphia Trail Network Funding Sources, 2015

Transportation Investment Generating Economic Recovery (TIGER)

Grays Ferry Swing Bridge

Philadelphia Water Department

Mantua Greenway

Paul S. Sarbanes Transit in Parks Program

Eastwick Heinz Connector Trail

Cobbs Creek Trail D

William Penn Foundation/Delaware Valley Regional Planning Commission Regional Trails Program

Frankford Creek Greenway Advanced Feasibility Study

Spring Garden Street Greenway

State & Rhawn Pennypack Connector Sidepath

City of Philadelphia Capital Budget (Fiscal Year 2015)

Delaware River Trail

Schuylkill River Trail

Watershed Park Trails

PRIORITIES & PROJECTS

2015 Updated Priority Ranking

As part of the 2015 update, the planning team updated the priority scoring for each project which changed in status. The scoring and priority rank changed for many projects due to additional funding, change in property ownership, new partnership opportunities, and other factors. The scoring of many projects was amended and completed projects were removed from the analysis, resulting in the 2015 updated priority list.

The updated priorities by project type are shown on the following page. The proposed projects are organized into the following project types –

- Watershed Park
- Delaware River Trail
- Schuylkill River Trail
- Sidepath/Roadway Adjacent
- Miscellaneous

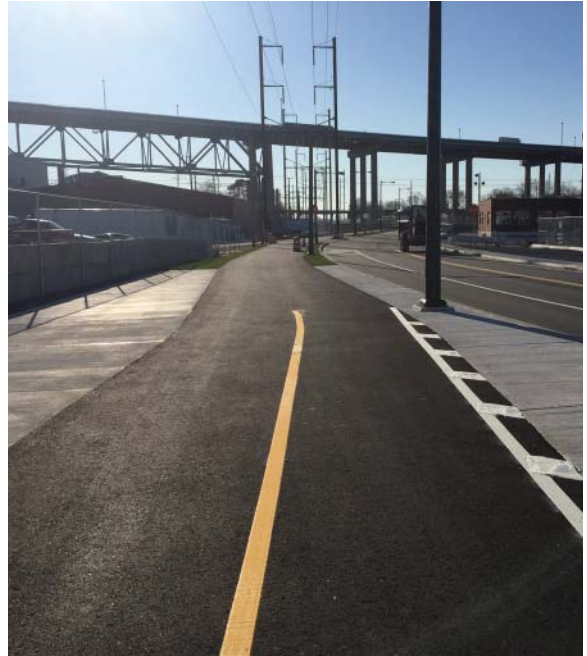
Several major projects have progressed to a higher priority rank due to additional project funding, advancement in trail studies or design, property acquisition, and other factors.

Case Studies - Proposed Trail Advancement

The extension of North Delaware Avenue from Lewis Street to Orthodox Street in the Bridesburg neighborhood of Philadelphia was completed in late 2015. The next phase, from Orthodox Street to Buckius Street, is in design. The final phase, from Buckius Street to Tacony Street, will begin design by PennDOT in the coming years in coordination with the reconstruction of the I-95 Betsy Ross Bridge Interchange Project. This will complete a major gap in the North Delaware Trail and, when completed, there will be a continuous trail along North Delaware Avenue from Allegheny to Tacony Street, where the Kensington & Tacony Trail will begin.

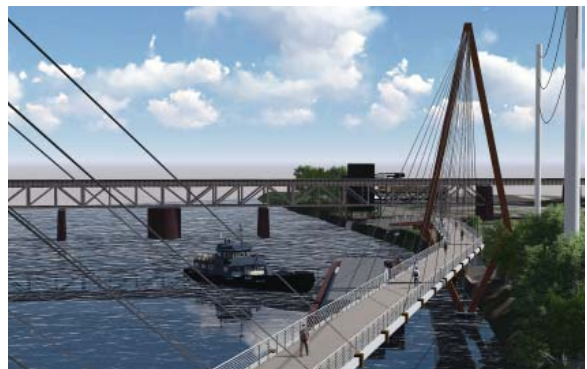
Cobbs Creek Connector section D is funded for final design by the Paul Sarbanes Transit in Parks Program and listed on the TIP for construction funding. The two way protected multi-use path will be maintained by Parks & Recreation and connect 84th Street along Lindbergh Avenue to the entrance of the Heinz National Wildlife Refuge. The project will ultimately connect to the Cobbs Creek Trail at 70th Street and Cobbs Creek Parkway.

The Christian to Crescent Schuylkill River Trail segment is in the feasibility phase. It's clear that, due to property and waterfront access issues, a boardwalk or other water-side facilities will be needed to bridge this major gap in the Schuylkill River Trail. The Schuylkill River Development Corporation is leading the planning effort.



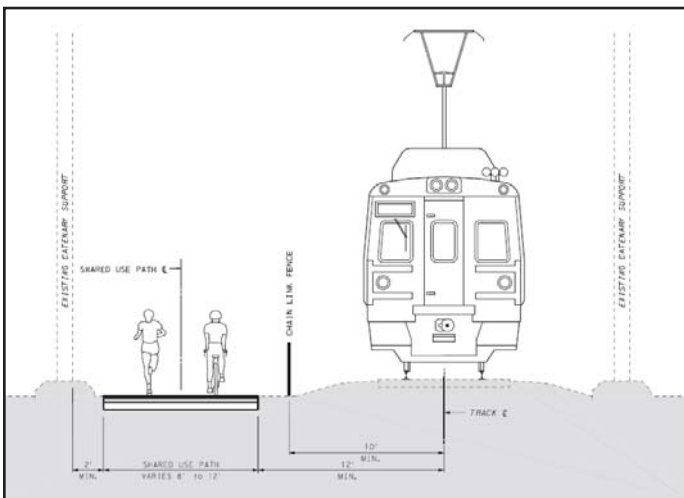
North Delaware Avenue Sidepath

Conceptual rendering of boardwalk for Christian to Crescent Schuylkill River Trail - Schuylkill River Development Corporation



The Parkside Cynwyd Trail Feasibility Study will be completed in spring of 2016. The proposed trail will connect adjacent to the Cynwyd SEPTA rail line between Parkside Avenue at the Philly Pump Track in Fairmount Park to the Cynwyd Trail in Lower Merion Township. Parks & Recreation, the Planning Commission, and the Mayor's Office of Transportation & Utilities are working with SEPTA and Montgomery County to move the project forward toward final design and construction.

The Fox Chase Lorimer Trail Feasibility Study is wrapping up in the spring of 2016. The proposed rail to trail will connect from Rhawn Street to the Montgomery County boundary. The Montgomery County boundary is the beginning of the 5.4 mile Pennypack Trail, which connects to Philadelphia's 11-mile portion of the Pennypack Trail. The Fox Chase Lorimer Trail is directly across Rhawn Street from the Fox Chase SEPTA Rail Station and the Fox Chase commercial area. Parks & Recreation, the Planning Commission, and the Mayor's Office of Transportation & Utilities are working with SEPTA and Montgomery County to move the project forward toward final design and construction.



Parkside Cynwyd Trail Proposed Cross Section, Michael Baker

Fox Chase Cynwyd Trail Proposed Alignment, Michael Baker



Proposed Trail Priority Status, 2015 Update

Watershed Parks			
Proposed Trail	RANK 2015	RANK 2014	RANK 2013
Frankford Creek Greenway, Phase 1	1	2	3
Frankford Creek Greenway, Phase 2	2	2	3
Cobbs Creek Connector A	3		
Tacony Creek Trail B	4	1	1
Frankford Creek Greenway, Phase 3	5	3	2
Cobbs Creek Connector D	6		
Poquessing A	7	4	5
Cobbs Creek Connector B	8		
Cobbs Creek Morris Park Connector B	9	5	4
Cobbs Creek Connector C	10		
Cobbs Creek Morris Park Connector A	11	6	7
Lower Poquessing Creek Trail A	12	7	6
Randolph Creek Trail	13	8	
Poquessing B	14	9	8
Lower Poquessing Creek Trail B	15	10	9

Schuylkill River Trail			
Proposed Trail	RANK 2015	RANK 2014	RANK 2013
South to Christian Connector	1	1	1
Bartram's North	2	2	5
Bartram's South	3	3	3
Schuylkill Crossing at Gray's Ferry	4	5	4
Wissahickon Gateway	5	4	2
Passyunk Point Trail	6	6	
Christian to Greys Crescent	7	7	6
Airport Fort Mifflin Trail	8	8	7

Delaware River Trail			
Proposed Trail	RANK 2015	RANK 2014	RANK 2013
Delaware Avenue Extension Sidepath	1	1	1
Kensington & Tacony Trail 1	2	3	2
Kensington & Tacony Trail 2	5	4	2
Baxter Trail	3	2	3
Penn Treaty Richmond Connector	4	5	4
Port Richmond Connector Trail	6	6	5
Delaware Waterfront Trail	7	7	6
Tacony Holmesburg Trail	8	8	7

Miscellaneous Locations			
Proposed Trail	RANK 2015	RANK 2014	RANK 2013
Pencoyd Trail	1	1	1
Parkside Cynwyd Trail	2	5	3
Christian St Bridge	3	2	6
Fox Chase Lorimer Trail Connector	4	6	9
Schuylkill Center - SRT Connector	5	3	4
Ivy Ridge Trail A	6	4	2
Cresheim Valley Trail	7	8	5
Poquessing Southampton Trail	8	7	16
Woodlands Cemetery Bikeway	9	9	
Tacony Pennypack Connector	10	15	13
Pennypack Airport Connector	11	11	7
Lehigh Viaduct Trail	12	12	8
Ivy Ridge Trail B	13	10	14
Pennypack Poquessing Connector	14	13	10
Airport Poquessing Connector	15	14	11
Tacony Sedgely Trail	16	16	12
Fern Rock American Trail	17	17	15

Sidepaths			
Proposed Trail	RANK 2015	RANK 2014	RANK 2013
MLK Drive Bridge Gap	1	1	1
Race Street North Sidepath	2	2	
Girard Avenue Bridge Sidepath	3	5	
State Rhawn Sidepath	4	3	2
Lincoln Drive Sidepath	5	4	4
Florist Street- Race Street Connector	6	6	6
Ben Franklin Bridge Entrance	7	7	3
State Road Sidepath	8	8	5
Mantua Greenway	9	23	
Broad Street Sidepath	10	10	11
Hunting Park Sidepath	11	9	7
34th Street Bridge Sidepath	12	11	8
Ben Rush State Park Sidepath	13	12	9
West Bank Greenway	14	13	10
Roosevelt Blvd Sidepath	15	14	12
Spring Garden Street Greenway	16	16	14
Penrose Sidepath	17	15	13
Germantown Ave Sidepath	18	17	15
Wissahickon Avenue Sidepath	19	18	16
Henry Avenue Sidepath	20	19	17
31st Street Sidepath	21	20	18
NE Airport Trail Extension	22	22	19
Hagys Mill Sidepath	23	21	

Tier 1 Projects
Tier 2 Projects
Tier 3 Projects
New projects in 2015

PHILADELPHIA TRAIL COMMITTEE

The Philadelphia Trail Committee is the implementing body of the Trail Master Plan. The Committee includes City agencies with direct roles in trail implementation, including design, construction, permitting, and project review. The Committee meets quarterly and makes decisions on funding priorities for each major trail funding program. The Committee communicates City priorities to the funding entities in coordination with program applications, including the DCNR Community Conservation Partnerships Program, PA DEP Coastal Zone Management Program, DCED Recreation, Trails, and Greenway program, and other programs.

The goal of the committee is to present one voice on trail priorities. City and funding entity representatives confirm that the presentation and discussion of trail projects and priorities in a citywide context significantly influences strategic planning for the citywide trail network.

The Committee also reviews design plans and weighs in on priority updates for proposed trails. Non-profit entities and City agency trail project managers presented several projects to the Committee and were advised to address key accessibility, design, and permitting issues in final design.

In 2015, the Committee added the Department of Public Health. The Committee also increased the initial review and coordination with the Streets Department's Right-of-Way, Design and Traffic divisions during project design to ensure smoother review during official submissions.

Philadelphia Trail Committee

Philadelphia City Planning Commission
Philadelphia Parks & Recreation
Mayor's Office of Transportation & Utilities
Commerce Department
Streets Department
Philadelphia Water Department
Philadelphia Redevelopment Authority
Philadelphia Industrial Development Corporation
Mayor's Office of Sustainability
Philadelphia Department of Public Health

South to Christian Concept Site Plan, Schuylkill River Development Corporation, Urban Engineers



NEXT STEPS

The Philadelphia Trail Committee identified several issues to explore in greater depth in the coming years. Staff and the committee will set funding goals and continue to develop strategies for phasing and matching trail design and construction projects as new funding sources become available, such as the PA Multimodal Transportation Funds, Transportation Alternative Program, the fifth round of the William Penn Regional Trail Fund, and other programs.

Staff will update the prioritization criteria to reflect current Census data and other metrics and consider additional criteria for prioritization to reflect the health and economic impacts of trails. The committee will also add existing trails into a parallel prioritization process, as several major facilities are in need of reconstruction in the coming years. The maintenance needs of new facilities will also be areas of focus.

Finally, the Committee will work to better communicate existing Philadelphia trail network assets to the general public by pursuing a Trail Network Map, similar to the recent Bike Map effort designed by Planning Commission staff and funded for printing by the Department of Public Health.

In the coming year, the Trail Committee will conduct public outreach activities with both the Advisory Group from the 2013 Plan and the general public. The latest meeting minutes and presentations from the Philadelphia Trail Committee, as well as the updated version of the complete Philadelphia Trail Master Plan can be found on the Philadelphia City Planning Commission website (www.phila.gov/cityplanning).

Completed Manayunk Bridge Trail



Mayor's Office of Transportation & Utilities
Philadelphia City Planning Commission
December 2015