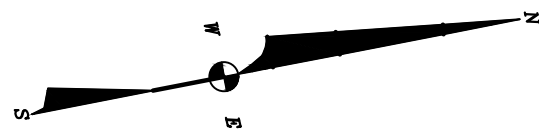
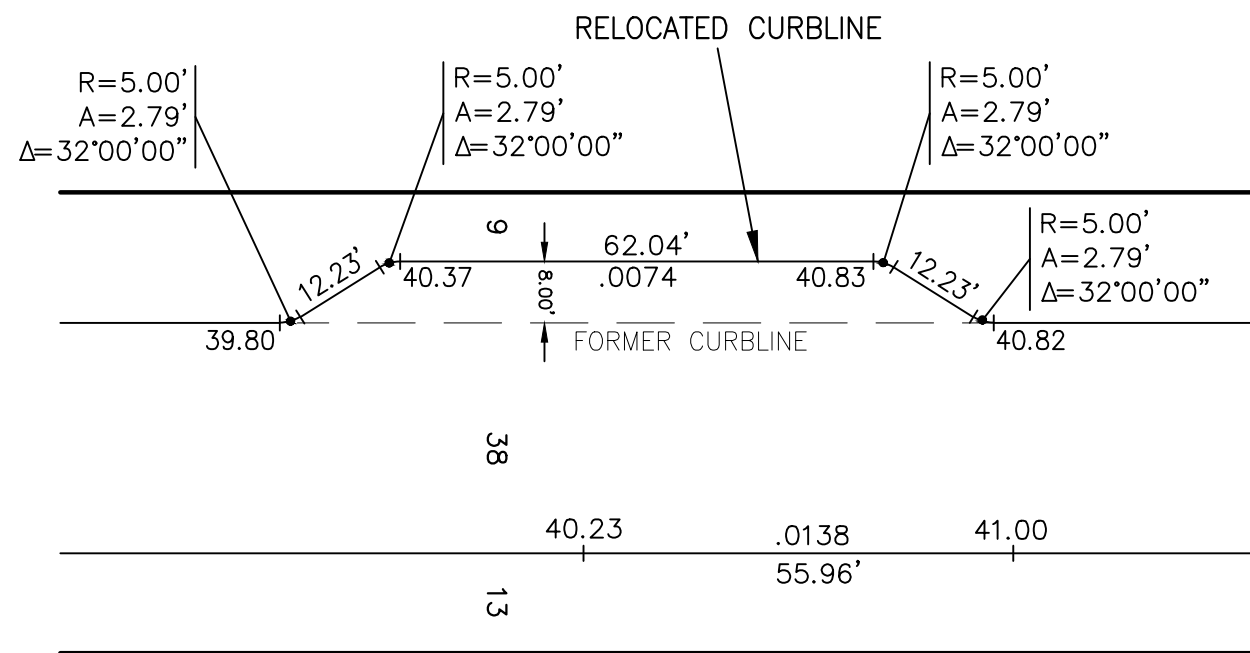
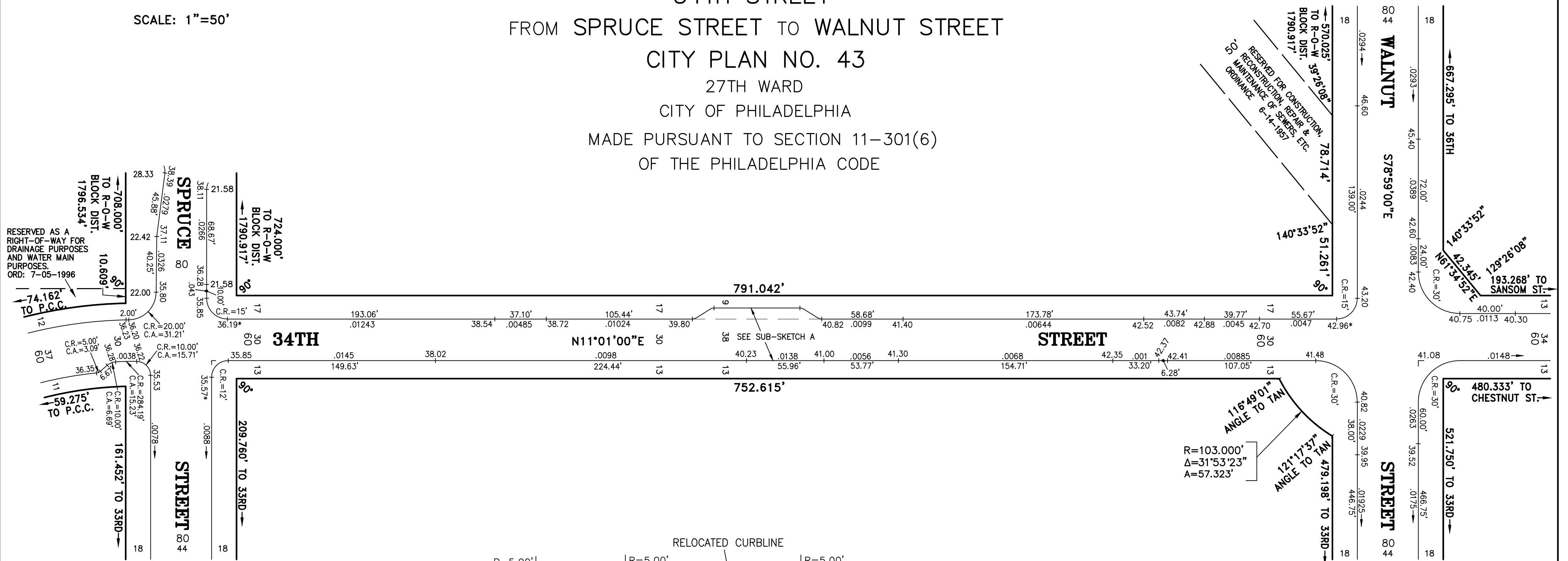


SUPPLEMENTAL PLAN
 RELOCATING PORTIONS OF THE CURBLINE OF
34TH STREET
 FROM SPRUCE STREET TO WALNUT STREET
 CITY PLAN NO. 43
 27TH WARD
 CITY OF PHILADELPHIA
 MADE PURSUANT TO SECTION 11-301(6)
 OF THE PHILADELPHIA CODE



SCALE: 1"=50'



SUB-SKETCH A
 Not To Scale

APPROVED BY BOARD OF SURVEYORS
 XXXX XX, 2024

LOUIS V. LAFOREST, P.L.S.
 SURVEYOR & REGULATOR
 SEVENTH SURVEY DISTRICT

VADIM FLEYSH, P.E.
 CHIEF ENGINEER