



OLIN

30 October 2024

Alex Smith
Director of the Philadelphia Art Commission
One Parkway Building
1515 Arch Street, 13th Floor
Philadelphia, PA 19102

PROJECT: West Mill Creek Area 'E' Playground and Area 'G' Brown Street Plaza
OLIN Project #2409
SUBJECT: Art Commission Construction Approval Cover Letter

Dear Mr. Smith,

On behalf of Rebuild Philadelphia, OLIN is applying for concept(ual) approval from the Art Commission for portions of the West Mill Creek Playground identified as Area 'E' "Playground" and Area 'G' Brown Street Plaza projects. The Playground is located at 5100 Parrish St, near the intersection of N. 51st Street and Ogden Street, and the Brown Street Plaza is south of the playground along Brown Street between 50th and 51st Streets. The Playground currently has play equipment for 5–12-year-olds, seating, and picnic areas in various states of fair to poor condition. The Brown Street Plaza contains a memorial sculpture commemorating the tragic housing collapses of the West Mill Creek sewer collapse in the 1960's as well as stairs in poor condition and a ramp that has become inaccessible.

OLIN led a multidisciplinary site assessment in 2023 to identify safety, code, and general condition deficiencies in accordance with Rebuild's standard assessment protocol for recreation sites. Primary site concerns included play surfaces not compliant with safety standards; aged and missing play equipment elements; benches in poor condition or missing; stressed, dead, and missing trees; ramps and stairs not compliant with ADA and building code standards; and retaining walls that are in poor condition. On-site observations also noted elevated heat levels and lack of shade.

Since the fall of 2023, two community engagement meetings have been held on the site to further understand the site users' needs and desired outcomes for renovation and design improvements to Area E and Area G.

Based upon community preferences, site assessment recommendations, and budget alignment, the new design incorporates the following scope

Area 'E' Playground:

- New playground equipment (Age 2-5 and 5-12)
- New safety surface
- New benches, picnic tables, trash cans, bike racks
- New plant beds and trees
- Improve stairs and ramps with railing
- Replace small retaining walls
- New security cameras and headend equipment
- New PPR Site Signage
- Replace ROW curb ramp at Dearborn and Parrish
- Re-lamp site lighting with LED fixtures

Area 'G' Brown Street Plaza

- Replace portions of plaza concrete paving
- Replace a ramp and stairs to be a code compliant
- New light fixtures
- Security camera improvements



- Remove a dying tree, and replace it with new trees
- New PPR site signage
- Install benches

These improvements to the playground and plaza are desired and supported by the surrounding community and would fulfill the community space improvement goals of City of Philadelphia's Rebuild funds.

Thank you for your consideration.
Sincerely,

Marni Burns
Partner
OLIN
TEL: 215-440-0030
Email: mburns@theolinstudio.com

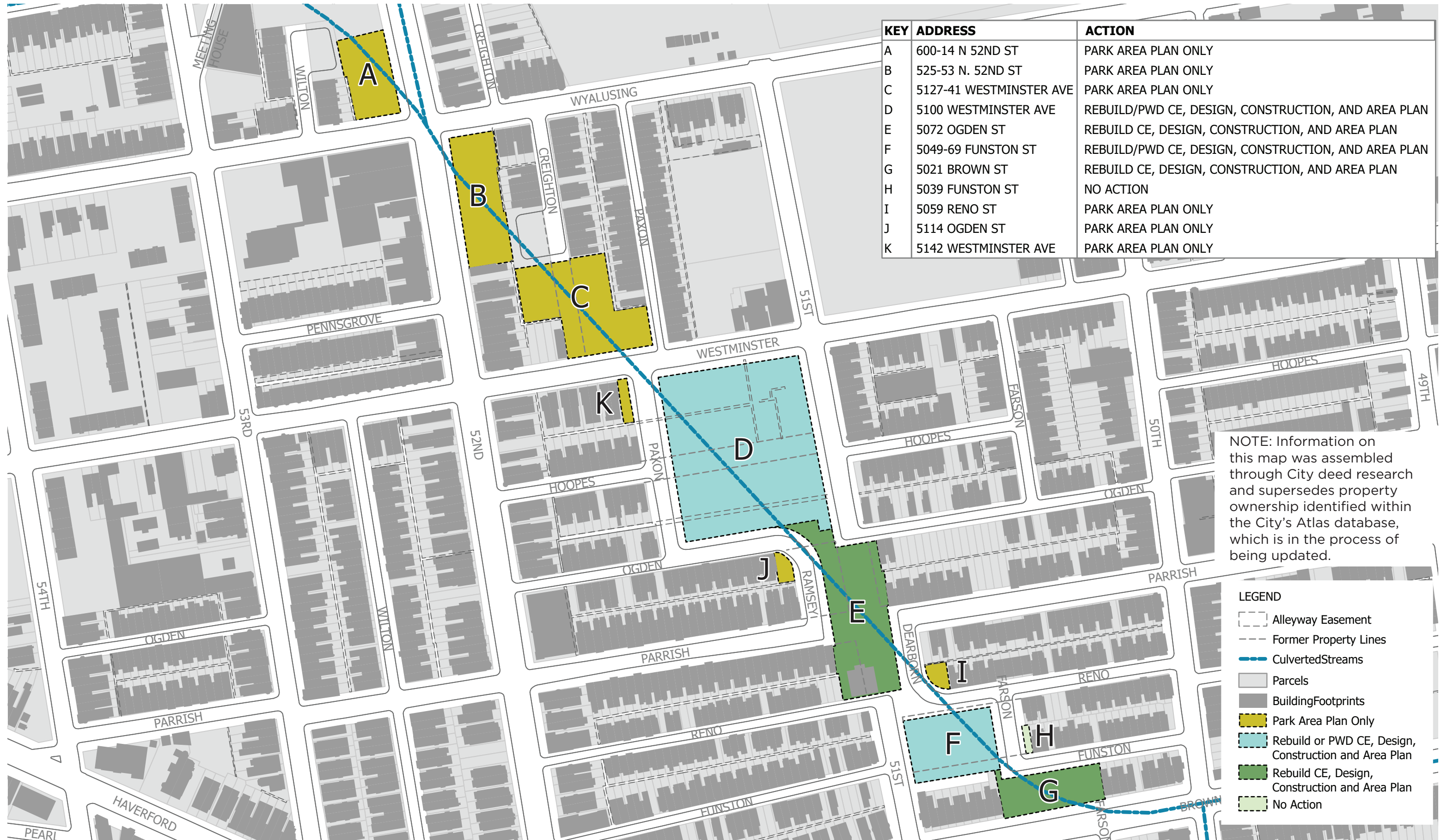
West Mill Creek Playground Area 'E' Playground & Area 'G' Brown St Plaza

PHILADELPHIA ART COMMISSION REVIEW
November 13, 2024

CONTEXT: WEST MILL CREEK PLAYGROUND NEIGHBORHOOD



WEST MILL CREEK: PROPERTY OWNERSHIP / AGENCY CONTROL ANALYSIS



AREA E (PLAYGROUND): NEEDS ASSESSMENT, SUMMER 2023



FIGURE 1: SOUTH ACCESS FROM SPLASH PAD



FIGURE 2: WEST ACCESS STAIRS



FIGURE 3: WEST ACCESS RAMP



FIGURE 4: CRUMBLING WALL AND FENCE



FIGURE 5: LACK OF TREES AND SHADE



FIGURE 6: AGING PLAY EQUIPMENT

AREA E (PLAYGROUND): NEEDS ASSESSMENT, SUMMER 2023



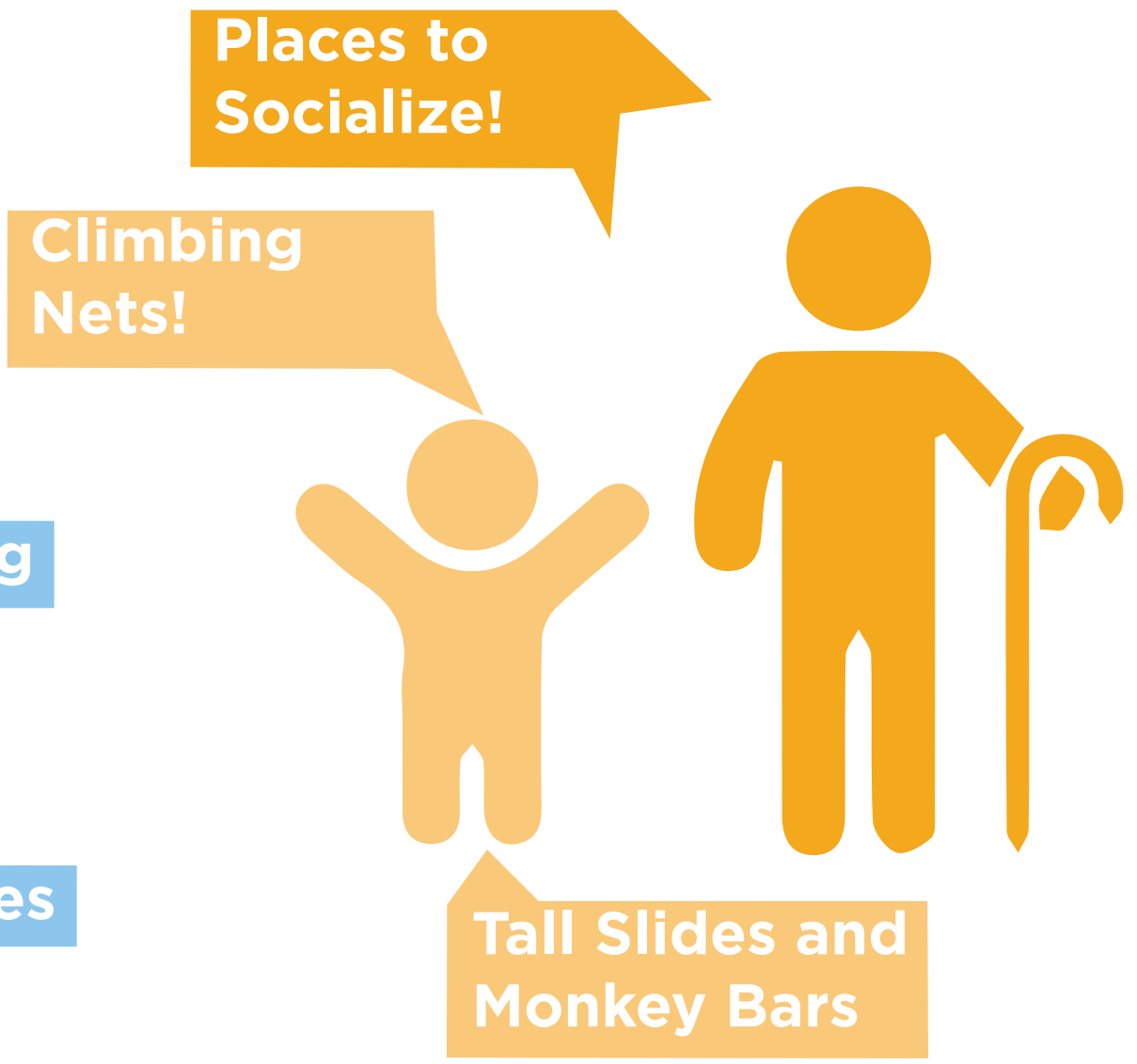
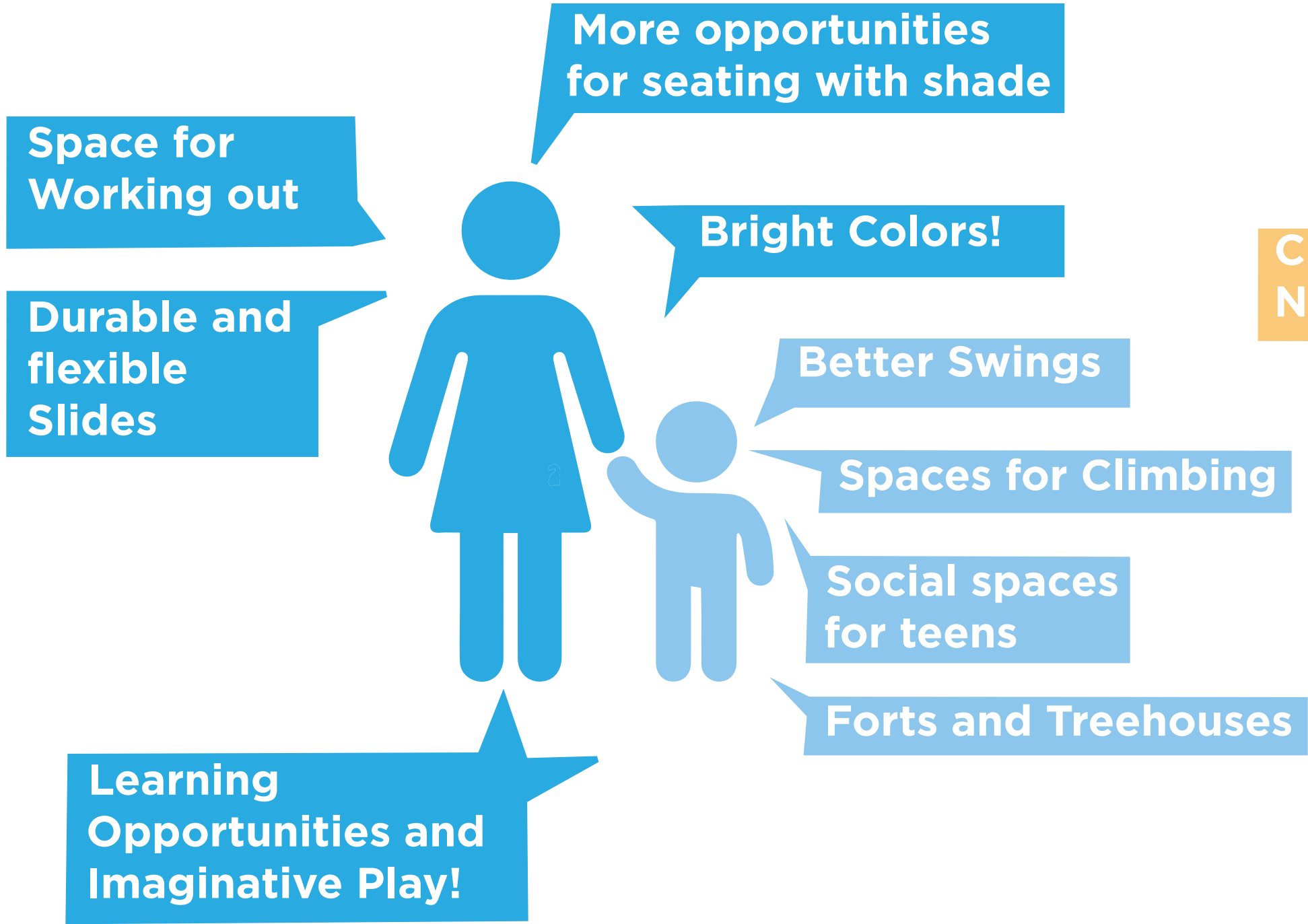
Base Scope

- New playground equipment (Age 2-5 and 5-12)
- New safety surface
- New benches, picnic tables, trash cans, bike racks
- New plant beds and trees
- Improve stairs and ramps with railing
- Replace small retaining walls
- New security cameras and headend equipment
- New PPR Site Signage
- Replace ROW curb ramp at Dearborn and Parrish
- Replace site lighting with PPR standard fixtures

WHAT WE HEARD (ROUND 1)...

COMMUNITY ENGAGEMENT EVENT
SEPTEMBER 19, 2023
APPROXIMATELY 58 PEOPLE ATTENDED

SITE VISIT USER INTERVIEWS
MARCH 13, 2024



SITE DESIGN DRIVERS:

- Play opportunities aligned with community input
- Shade / heat mitigation
- Shared area caregiver seating with flexibility / visibility
- Variety of community gathering places
- Integration of grade changes

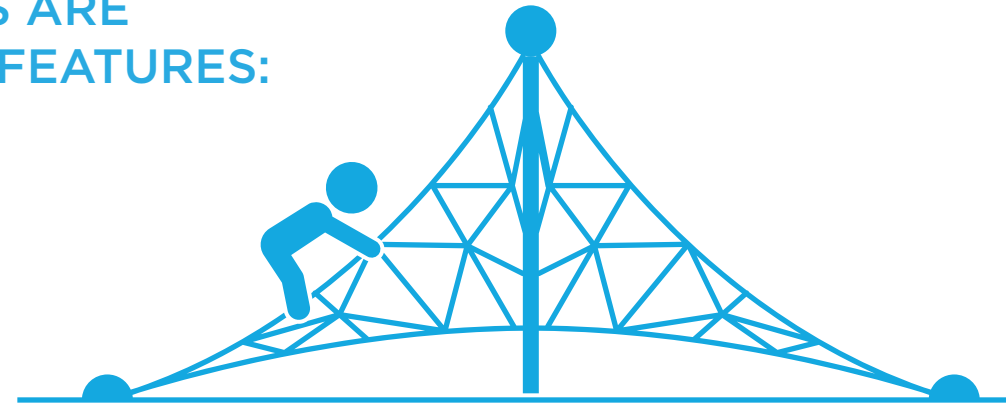
WHAT WE HEARD... COMMUNITY ENGAGEMENT JUNE 11, 2024

APPROXIMATELY 60 PEOPLE ATTENDED

TWO ALTERNATIVE CONCEPTS ARE SHARED WITH THESE DESIGN FEATURES:

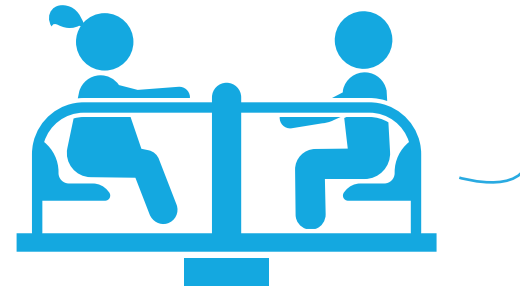
ALL AGES AGILITY TRAIL

33%



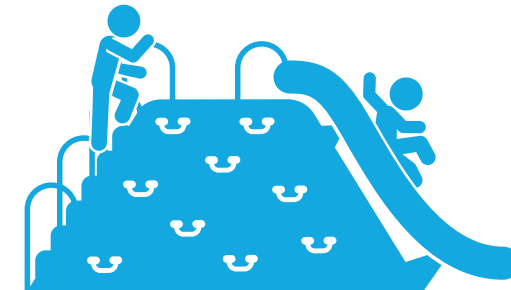
GROUP MERRY-GO-ROUND SPINNER

19%



EMBANKMENT SLIDE

16%



BIGGER SET OF SWINGS

15%



CENTRAL SEATING/GATHERING AREA

15%



INDIVIDUAL SPINNERS

12%



COLOR THEME PREFERENCE

VIBRANT GREENS

15%

COOL BLUES

14%

WARM COLORS

12%

“THE RIBBON” IS PREFERRED WITH THE BELOW ALTERATIONS:

- BIGGER SET OF SWINGS
- CENTRAL SEATING
- VIBRANT GREEN AND BLUE COLOR THEME

AREA 'E' PLAYGROUND



Agility Trail
Kompan



Arch Swings with two bays
Landscape Structures



Tipi Carousel
Kompan

AREA 'E' PLAYGROUND



Spinner Bowls
Kompan



Embankment Slide
Kompan



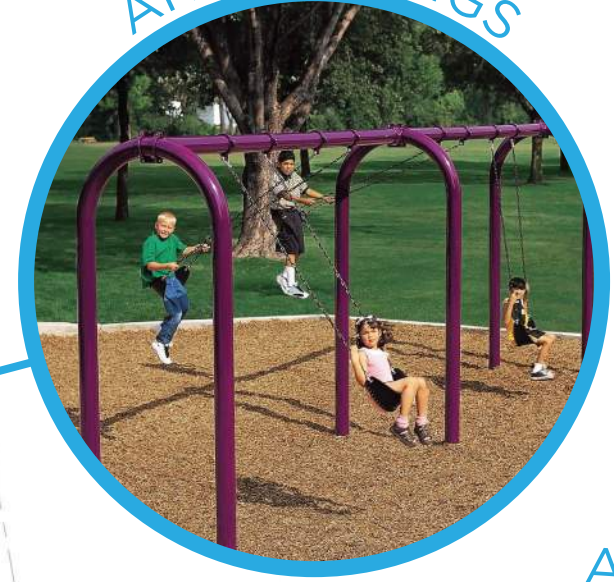
Mounds
Custom

AREA 'E' PLAYGROUND

SPINNER BOWLS



ARCH SWINGS



EMBANKMENT SLIDE



Slide Shaded by Tree

MOUNDS

Imaginative Play & Working Out



AGILITY TRAIL



TIPI CAROUSEL



AREA 'E' PLAYGROUND

PPR STANDARD BENCH



PPR STANDARD TABLE & CHAIRS



PPR STANDARD TRASH RECEPTACLES



CONCRETE SEAT WALL



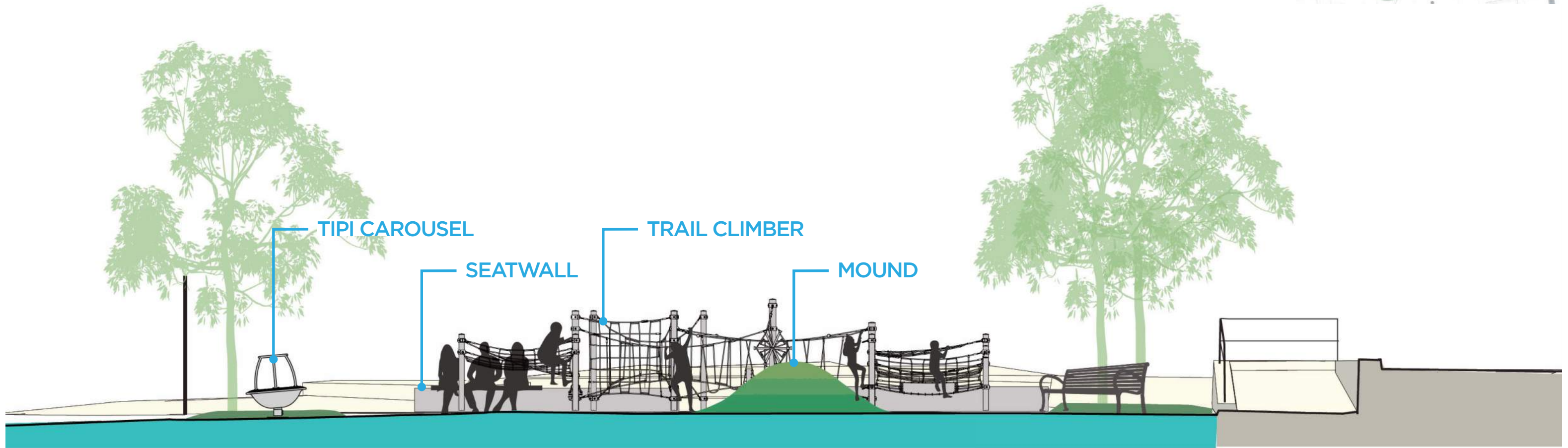
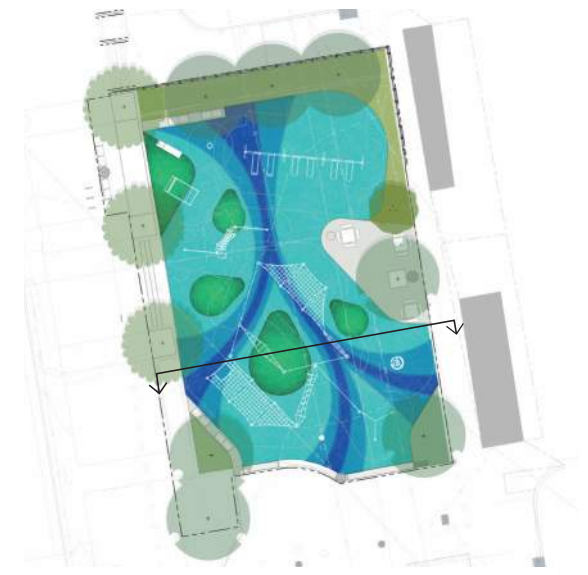
Section C

Section B

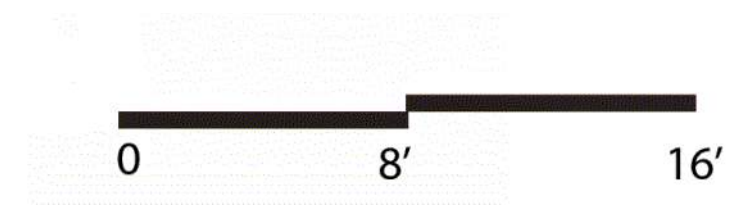
Section A

EXISTING DRAIN INLET.
DRAINAGE PATTERN TO
BE MAINTAINED

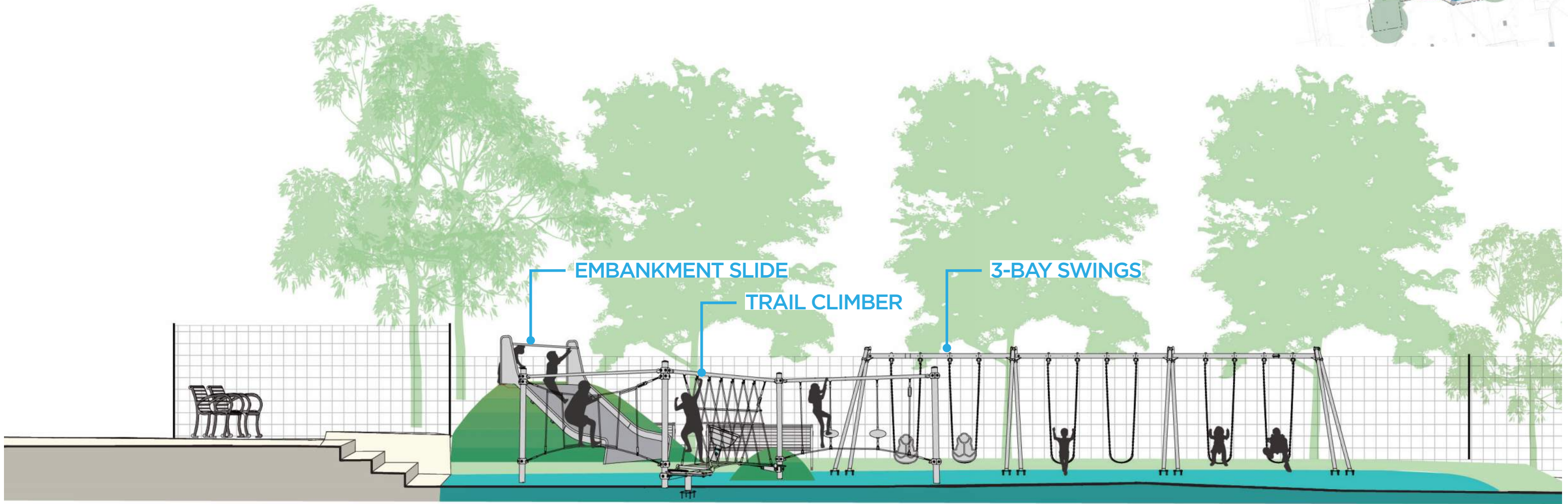
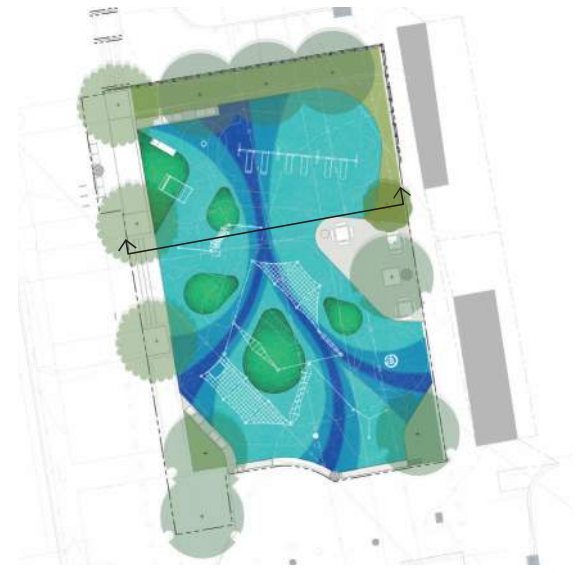
AREA 'E' PLAYGROUND



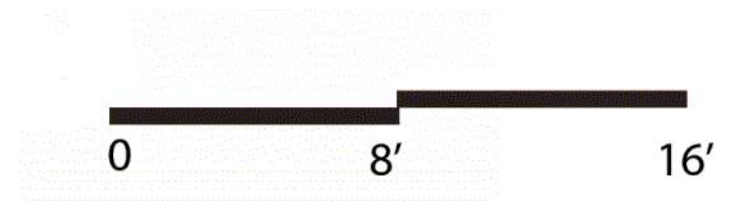
Section A



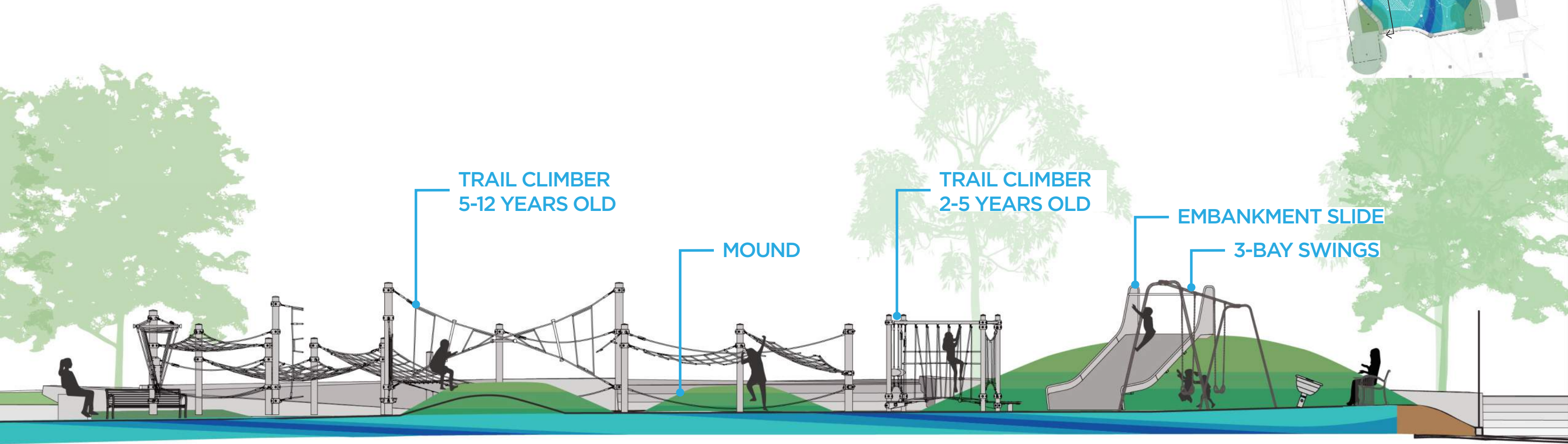
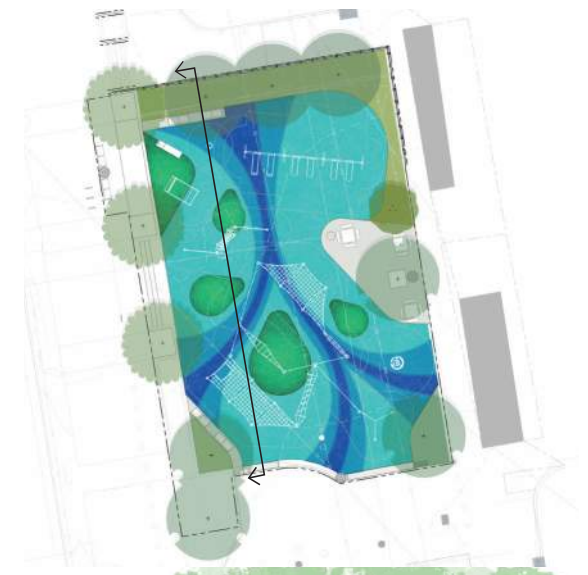
AREA 'E' PLAYGROUND



Section B

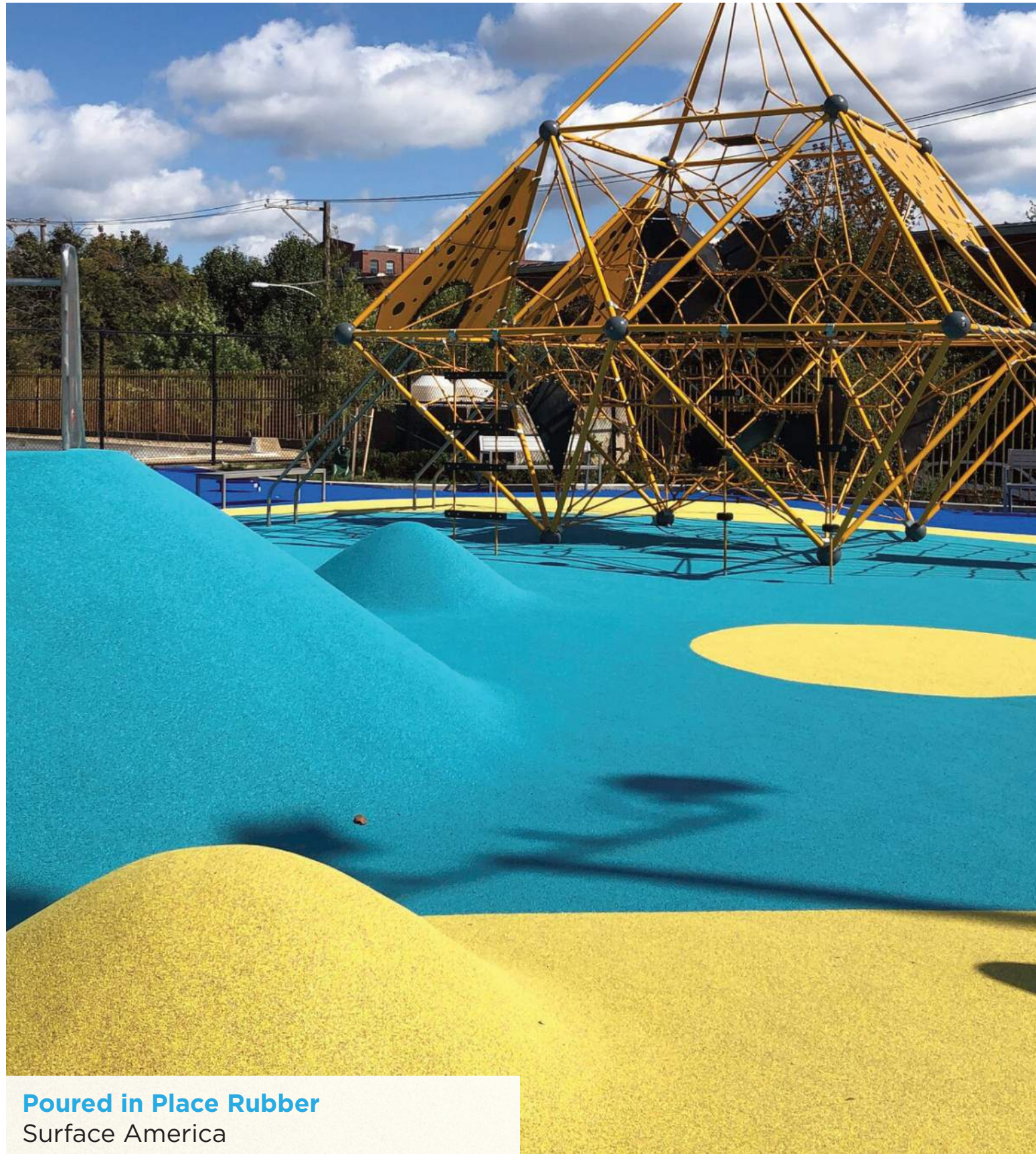


AREA 'E' PLAYGROUND



Section C

SAFETY SURFACING & COLOR OPTIONS



Poured in Place Rubber
Surface America

Safety Surface Colors

Cool Blues



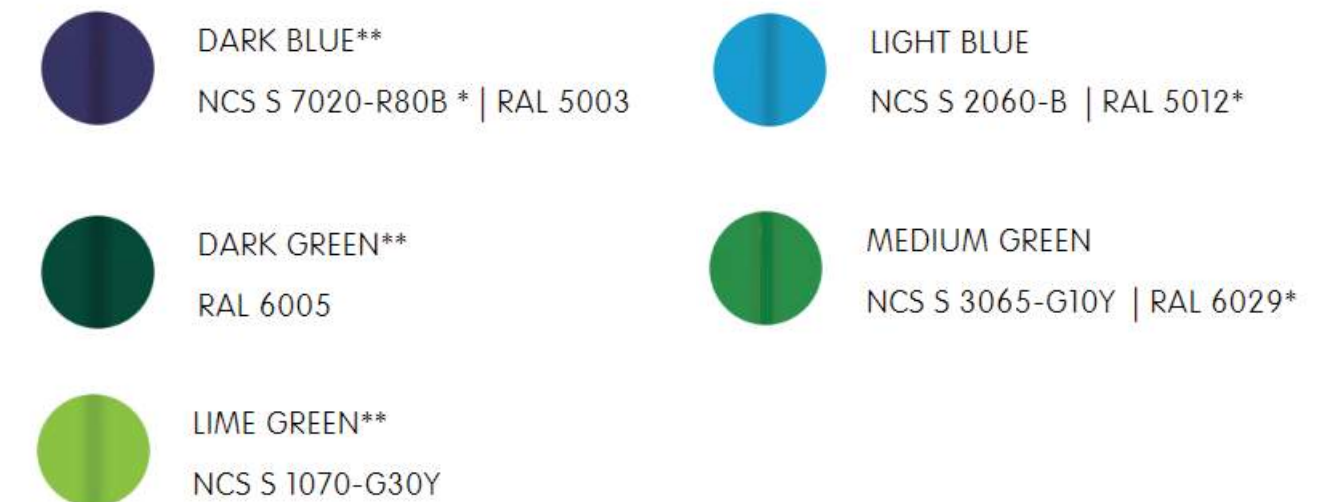
Vibrant Greens



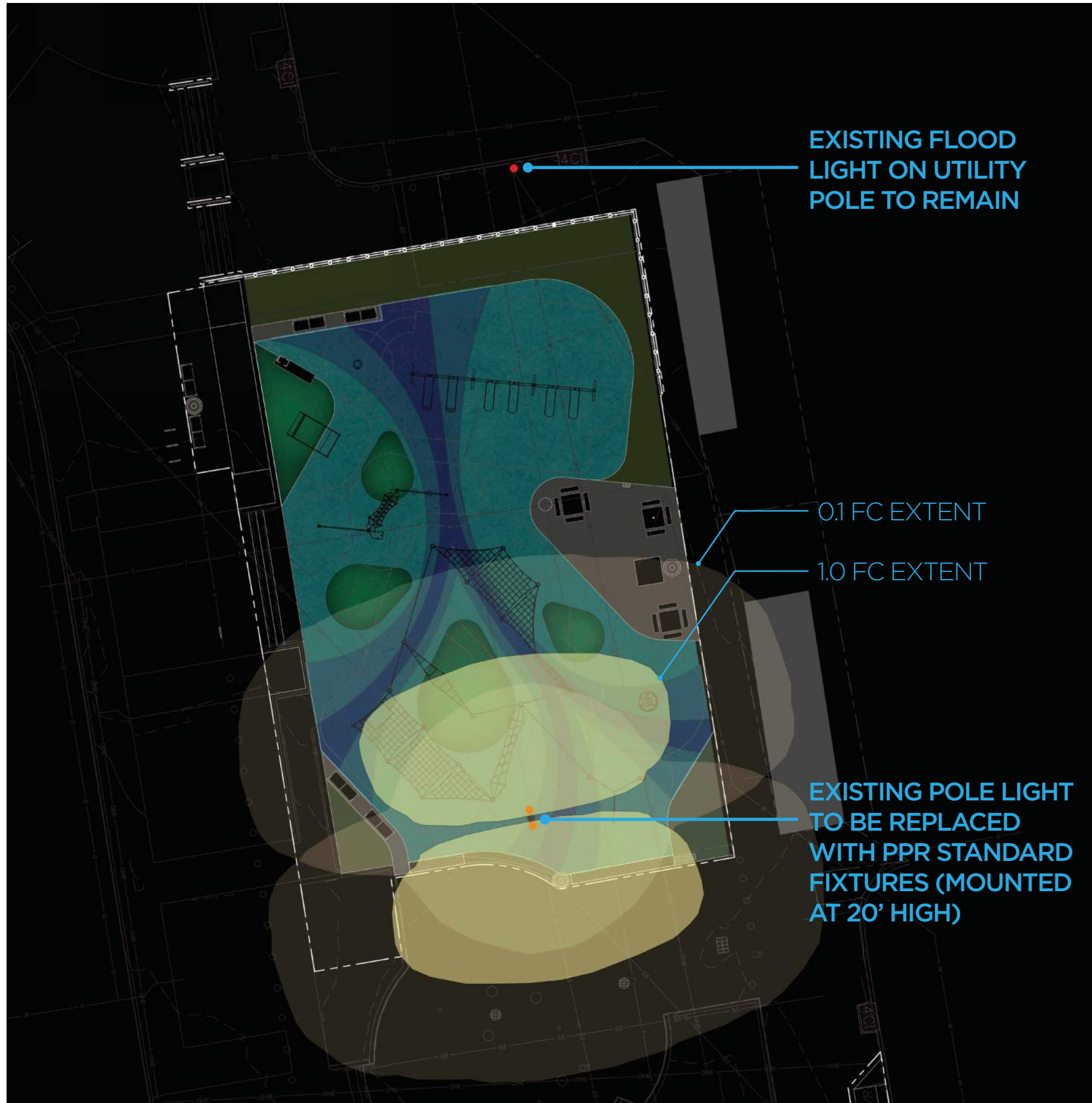
Rope Colors



Steel Colors



AREA 'E' PLAYGROUND - SITE LIGHTING CONCEPT



EXISTING FLOOD LIGHT ON UTILITY POLE



EXISTING POLE LIGHT TO BE REPLACED

AREA 'G' BROWN ST PLAZA: NEEDS ASSESSMENT, SUMMER 2023



FIGURE 1: NON-COMPLIANT RAMP & TREE IN DECLINE



FIGURE 2: NON-COMPLIANT STAIRS



FIGURE 3: CRUMBLING RETAINING WALL



FIGURE 4: SCULPTURE IN NEED OF RESTORATION



FIGURE 5: MAINTENANCE AND PROXIMITY TO HOMES



FIGURE 6: MAINTAIN SEPARATION FROM ROWHOUSE

AREA 'G' BROWN ST PLAZA: NEEDS ASSESSMENT, SUMMER 2023



Base Scope

- Replace portions of plaza concrete paving
- Replace a ramp and stairs to be a code compliant
- New PPR standard light fixtures
- Security camera improvements
- Remove a dying tree, and replace it with new trees
- New PPR site signage
- Install benches

AREA 'G' BROWN ST PLAZA: EXISTING SCULPTURE



Art Inventories Catalog
Smithsonian American Art Museum

Artist:
Kimmelman, Harold, 1923- , sculptor.

Title:
Decline and Rise, (sculpture).

Dates:
Commissioned April 1968.
Installed Oct. 1969.

Medium:
Sculpture: Stainless steel;
Base: possibly concrete.

Dimensions:
Sculpture: approx. H. 65 in. W. 57 in. (1 ton).

The sculpture was originally commissioned to commemorate the tragic collapse of the Mill Creek sewer and the loss of lives.

Along with this project, Philadelphia Rebuild will commission Creative PHL to provide the in-situ restoration of sculpture, and potentially an interpretive signage.

AREA 'G' BROWN ST PLAZA: EXISTING TREE TO BE REMOVED

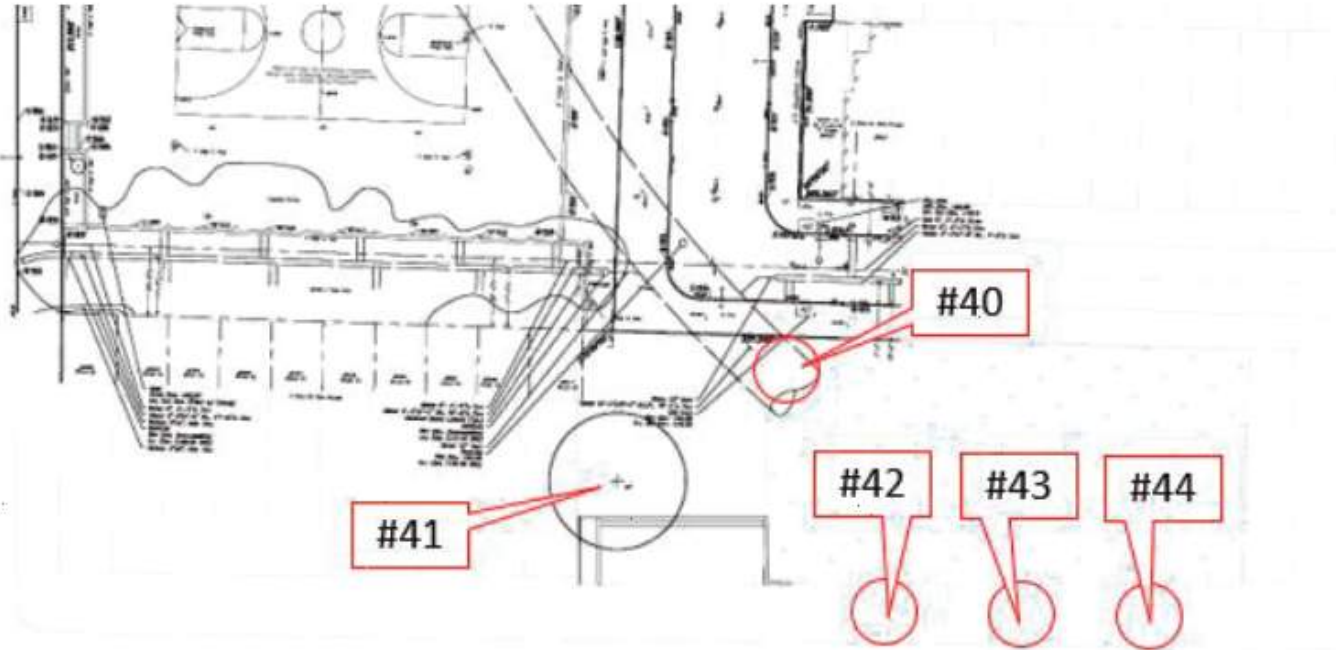


OAK TREE IS IN POOR CONDITION, WITH A LARGE PORTION OF THE CANOPY SHOWING BARK LOSS AND DIEBACKS



LARGE AREA OF BARK ON MAIN TRUNK IS IRREPARABLY DAMAGED AND ROOTS ARE GIRDLING BY ADJACENT PAVING, CONTRIBUTING TO THE RAPIDLY DECLINING HEALTH OF THE TREE

AREA 'G' BROWN ST PLAZA: EXISTING TREE TO BE REMOVED



INV #	SCIENTIFIC NAME	COMMON NAME	1 CBH (INCH)	SPREAD (FT)	HT (FT)	CONDITION	LIFE EXP (YRS)	GENERAL TREE COMMENTS
40	Dead	Dead	60	0	10	DEAD	0	
41	Quercus rubra	Red oak	103	60	35	POOR	5-15	displacing sidewalk and stairs
42	Quercus rubra	Red oak	60	18	20	POOR	<5	mostly dead
43	Dead	Dead	42	0	10	DEAD	0	
44	Acer rubrum	Red maple	37	33	25	POOR	5-15	Tree cavity

Due to the poor condition of the existing tree, the tree does not need to be replaced per the Zoning Code.

The entire arborist report is located in the Appendix.

CBH= Circumference breast height in inches (4.5 feet standard measurement from the ground) multiple entries indicate the number of trunks or stems

CONDITION OF THE TREE
 P = POOR
 F = FAIR
 G = GOOD
 D = DEAD

HERITAGE TREES; GREATER THAN 24" DBH (75" CBH) AND ONE OF THE SELECTED TREE SPECIES

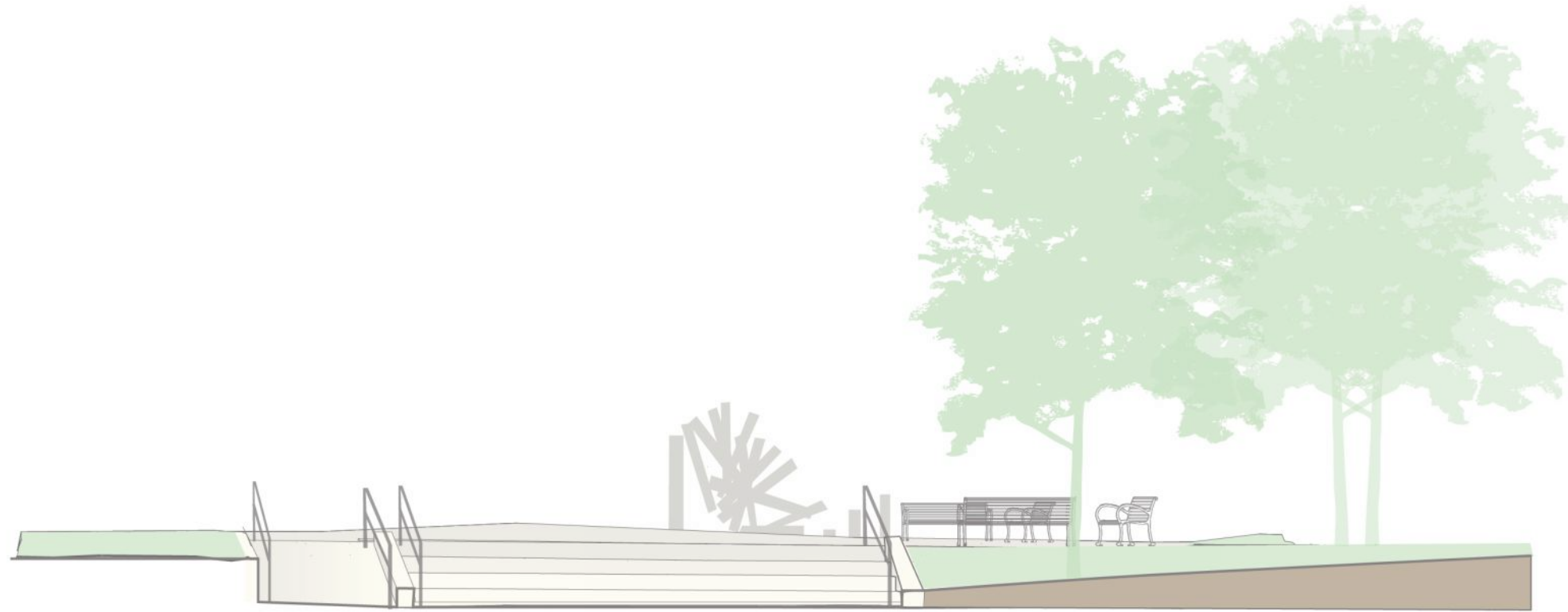
AREA 'G' BROWN ST PLAZA SITE DESIGN

- Restore and honor memorial sculpture
- Remove dying tree; replant trees for shade
- Provide accessibility between Brown St and Funston St
- Provide seating opportunities with greater visibility
- Anticipate future community uses of lawn area
- Provide lighting

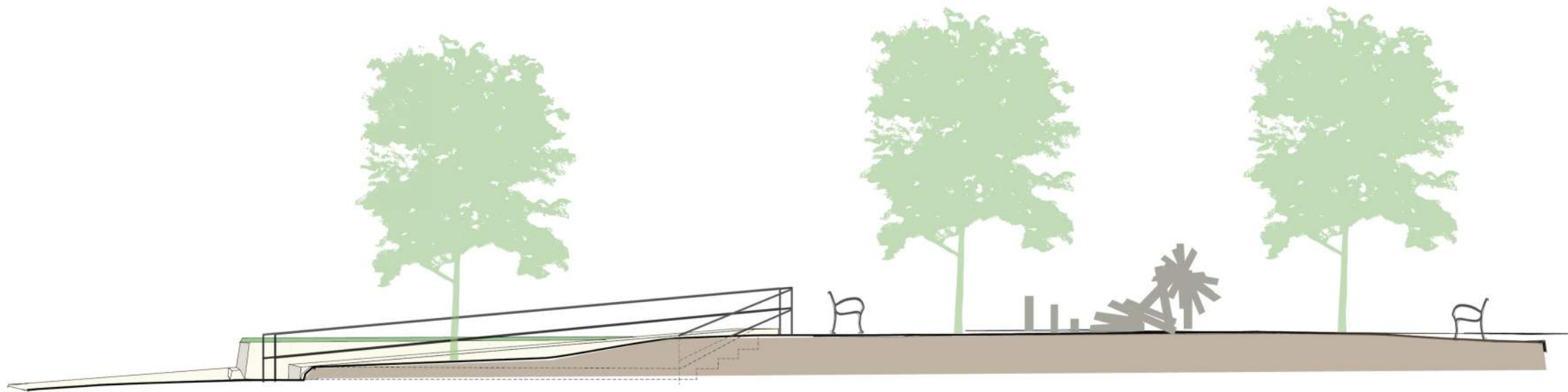
AREA 'G' BROWN ST PLAZA



AREA 'G' BROWN ST PLAZA



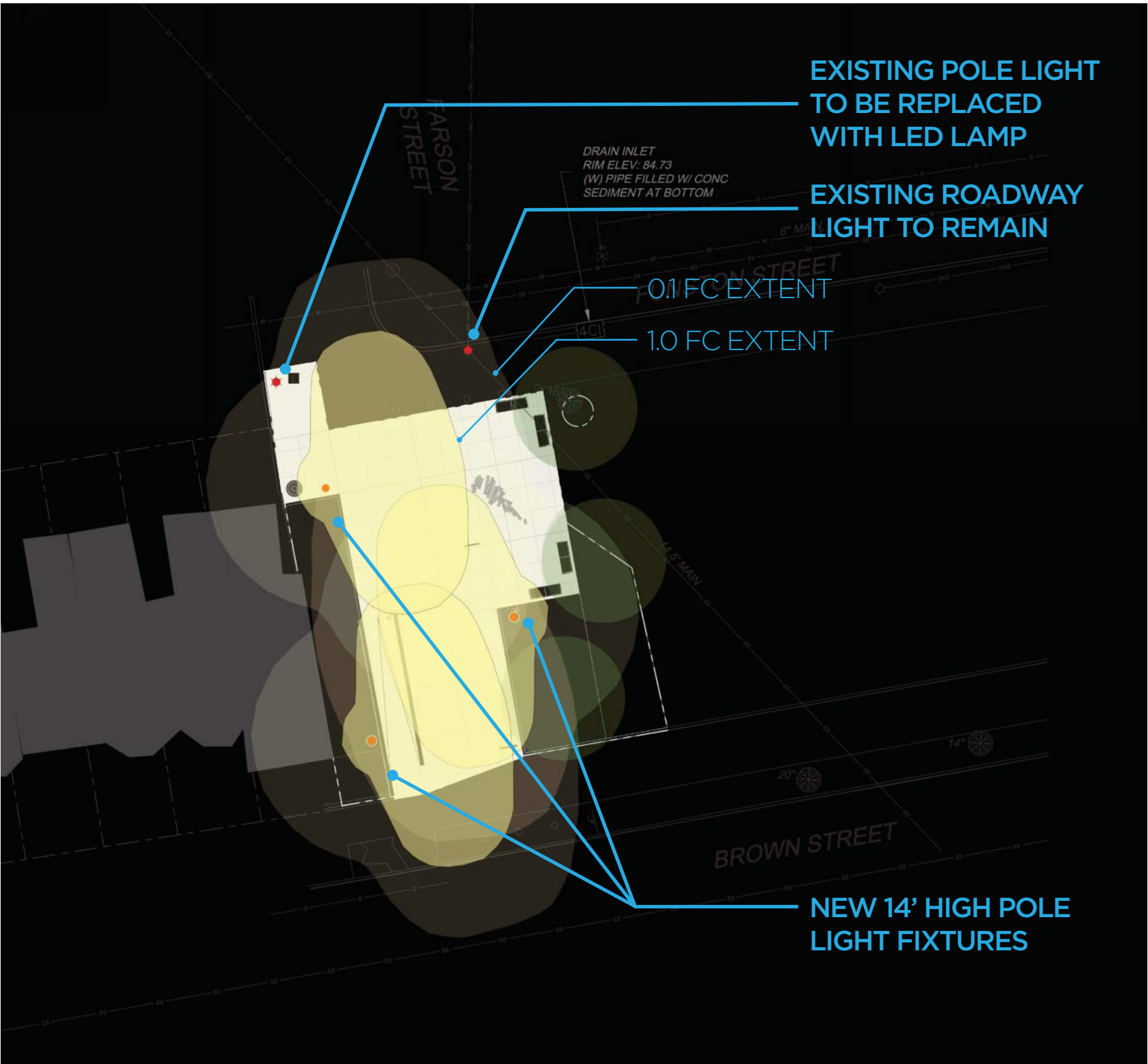
Section A



Section B



AREA 'G' BROWN ST PLAZA - SITE LIGHTING



EXISTING POLE LIGHT FIXTURE TO BE REPLACED



UTILIZES EXISTING JUNCTION BOX FOR SITE LIGHTING EXTENSION

TREE PALETTE



ACER RUBRUM
'AUTUMN FLAME'



ULMUS AMERICANA
'VALLEY FORGE'



GLEDITSIA TRIACANTHOS
VAR. INERMIS



CERCIS CANADENSIS
MULTISTEM



QUERCUS RUBRA

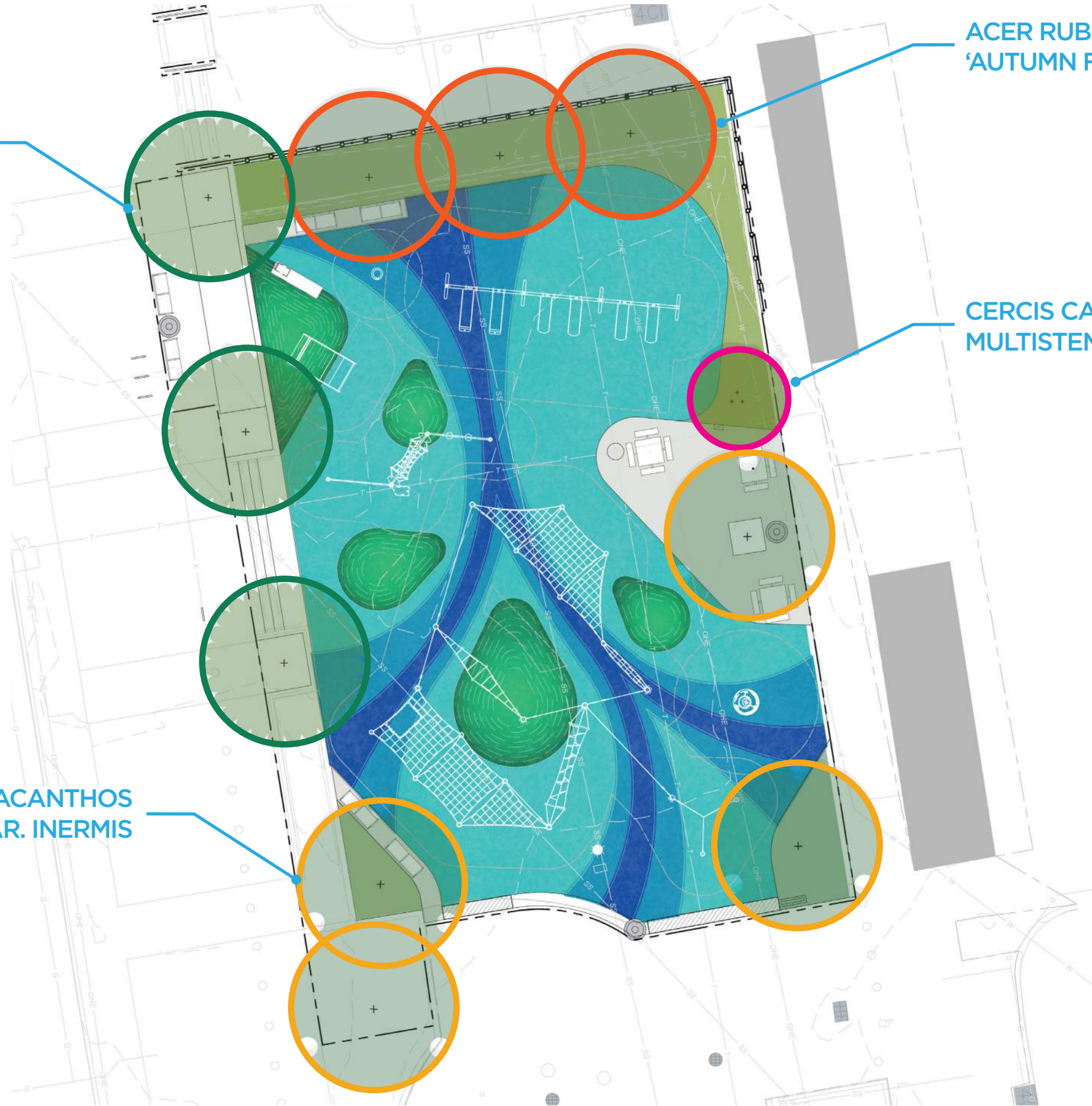
AREA 'E' PLAYGROUND TREES

ULMUS AMERICANA
'VALLEY FORGE'

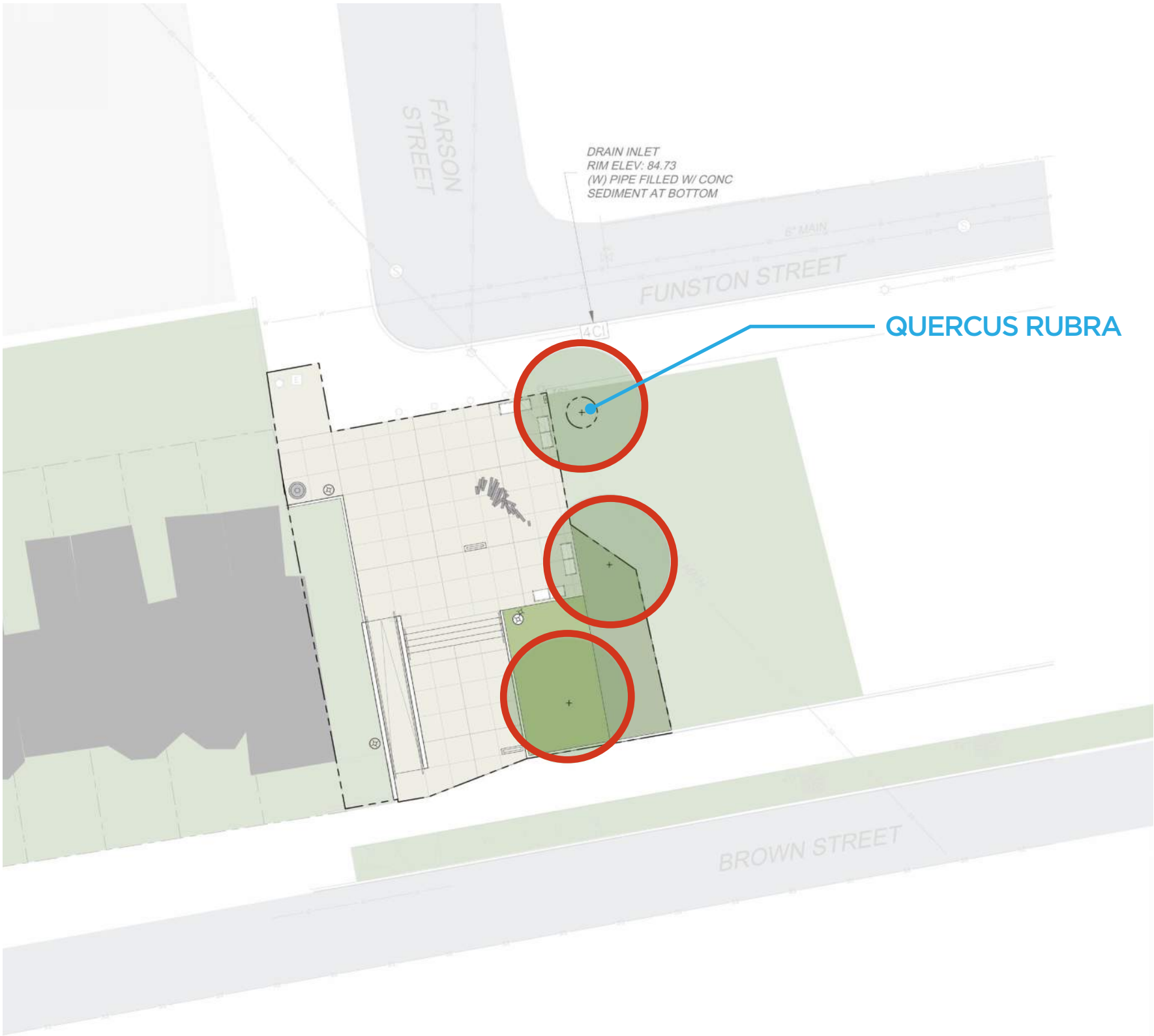
ACER RUBRUM
'AUTUMN FLAME'

CERCIS CANADENSIS
MULTISTEM

GLEDITSIA TRIACANTHOS
VAR. INERMIS



AREA 'G' BROWN ST PLAZA



From: Noni Clemens <Noni.Clemens@phila.gov>
Sent: Thursday, October 24, 2024 10:38 AM
To: Erica Sollberger; Marguerite Anglin
Cc: Angela E. Dixon
Subject: RE: OACCE/Rebuild - West Mill Creek
Attachments: Decline and Rise.jpg

Hi Erica,

Thanks for following up. We did receive a proposal from HCC for Decline and Rise in 2 phases (see below) but it did not include any signage so we are meeting with them today to see if that is something they can include in their proposal and we can follow up with a meeting with you to discuss next steps.

We don't have an official photograph or description of Decline and Rise in our database or AC paper records, unfortunately. The most complete reference to it I can find anywhere is this from the Smithsonian's inventory of American Painting and Sculpture: <https://siris-artinventories.si.edu/ipac20/ipac.jsp?uri=full=3100001~!307309!0>. I'm attaching a photo I took on site, but can also ask HCC if they can share images they took while assessing, if that's helpful.

Thanks,
Noni

Phase 1

- Review plans supplied by Rebuild/Creative Philadelphia.
 - Document existing conditions with digital photography.
 - Apply protective shock absorbing polyethylene foam to all sculpture components.
 - Selectively remove concrete as it relates to the interface of the sculpture and concrete squares.
 - Brace sculpture components as needed to prevent movement during construction phase.
 - GC will remove the remainder of the concrete and install new concrete as per design specifications.
- Cost for these services including materials \$14,760.00

Phase 2

- Treat sculpture once all site work is completed.
- Clean, remove paint coatings, and restore existing surface finish.

Cost for these services including materials \$9,600.00



Noni Clemens

Assistant Public Art Director
Creative Philadelphia
City of Philadelphia

o: City Hall, Rm. 116 | Philadelphia, PA 19107

m: 267.591.1917 | **o:** 215.686.8446
e: noni.clemens@phila.gov

From: Erica Sollberger <Erica.Sollberger@phila.gov>
Sent: Thursday, October 24, 2024 9:56 AM
To: Noni Clemens <Noni.Clemens@phila.gov>; Marguerite Anglin <Marguerite.Anglin@phila.gov>
Cc: Angela E. Dixon <Angela.E.Dixon@phila.gov>
Subject: RE: OACCE/Rebuild - West Mill Creek

Noni & Marguerite,
Just popping this email back up to see where things are at with the conservation proposal for WMC & preparation for our AC presentation on 11/13. More details in the email below.
Thanks in advance!
-e



Erica Sollberger, PLA (*she/her*)
Design & Construction Project Manager
Rebuild, City of Philadelphia
rebuild.phila.gov

From: Erica Sollberger
Sent: Thursday, October 17, 2024 10:33 AM
To: Noni Clemens <Noni.Clemens@phila.gov>; Marguerite Anglin <Marguerite.Anglin@phila.gov>
Subject: RE: OACCE/Rebuild - West Mill Creek

Noni & Marguerite,
Just checking in to see if the proposal for conservation work for the sculpture Decline and Rise, at West Mill Creek, has come back with pricing and a suggested timeline.

We just had a meeting with Dx this week, and it was suggested that we have a sign or plaque to explain the artwork. I know we had talked about that when we met onsite-is that something that can be included as part of this restoration?

We expect to go to the November 13 AC meeting and will need a letter-Angie will reach out to you with the specifics next week. With the AC presentation in mind, does Creative PHL have an official description and photo of the sculpture that could be added to our AC presentation? I have multiple photos from many site visits, but don't know which angle best represents the size, form and content of the sculpture.

Thanks for your time!
-e



Erica Sollberger, PLA (*she/her*)
Design & Construction Project Manager
Rebuild, City of Philadelphia
rebuild.phila.gov

From: Noni Clemens <Noni.Clemens@phila.gov>
Sent: Friday, July 12, 2024 3:26 PM
To: Erica Sollberger <Erica.Sollberger@phila.gov>; Marguerite Anglin <Marguerite.Anglin@phila.gov>
Cc: LeeAnn Suen <LeeAnn.Suen@phila.gov>
Subject: RE: OACCE/Rebuild - West Mill Creek

Hi Erica,

Thanks for these photos! I reached out to Heritage Conservation Collective (HCC) to coordinate a visit next week. I'll reach out once I get a response and their availability. Thanks!



Noni Clemens
Assistant Public Art Director
Creative Philadelphia
City of Philadelphia

o: City Hall, Rm. 116 | Philadelphia, PA 19107
m: 267.591.1917 | **o:** 215.686.8446
e: noni.clemens@phila.gov

From: Erica Sollberger <Erica.Sollberger@phila.gov>
Sent: Friday, July 12, 2024 3:15 PM
To: Marguerite Anglin <Marguerite.Anglin@phila.gov>; Noni Clemens <Noni.Clemens@phila.gov>
Cc: LeeAnn Suen <LeeAnn.Suen@phila.gov>
Subject: RE: OACCE/Rebuild - West Mill Creek

Marguerite & Noni,

Attached are some photos of the sculpture Decline & Rise at West Mill Creek, which really don't adequately show the sloping of the concrete beneath the sculpture. It seems to be higher where you might expect the footings for the sculpture to be, and slopes down as you move away from the sculpture. I'm not familiar with how a sculpture like this is anchored, so maybe this is completely normal!

We would love to meet up with a conservator from Heritage (?) to go over what needs to be done to stabilize the sculpture (if anything) and restore its prominence in the community.

-e



Erica Sollberger, PLA (*she/her*)
Design & Construction Project Manager
Rebuild, City of Philadelphia
rebuild.phila.gov













From: Marguerite Anglin <Marguerite.Anglin@phila.gov>

Sent: Wednesday, July 10, 2024 8:30 AM

To: Erica Sollberger <Erica.Sollberger@phila.gov>; LeeAnn Suen <LeeAnn.Suen@phila.gov>

Cc: Noni Clemens <Noni.Clemens@phila.gov>

Subject: RE: OACCE/Rebuild - West Mill Creek

Hi Erica,

My apologies for this delayed response. Re: Conservation, we will need to have one of our professional public art conservators visit the site, assess the piece and provide a scope and budget for the work needed. We are currently having our conservators contracts renewed for another term (the current term ended in June). We will circle back with you to have them visit the site once the contracts have been conformed.

P.S. Our name has recently changed to Creative Philadelphia (formerly Office of Arts, Culture and the Creative Economy-OACCE). More to come on that soon.

Best,
Marguerite



Marguerite Anglin, RA

Public Art Director
Creative Philadelphia
City of Philadelphia

o: City Hall, Rm. 116 | Philadelphia, PA 19107
m: 267.303.0507 | o: 215.686.4596
e: marguerite.anglin@phila.gov

From: Erica Sollberger <Erica.Sollberger@phila.gov>
Sent: Monday, June 17, 2024 3:50 PM
To: LeeAnn Suen <LeeAnn.Suen@phila.gov>; Marguerite Anglin <Marguerite.Anglin@phila.gov>
Subject: RE: OACCE/Rebuild - West Mill Creek

Thank you for the introduction, LeeAnn!

Marguerite,

I'm sorry I wasn't able to attend Friday's OACCE meeting, but we would be interested in meeting someone from your office about the specifics of conservation for *Decline and Rise* at West Mill Creek.

What is the best way to go about scheduling time for a/n (onsite) review? The improvements to the plaza won't be happening until 2025, but we'll be working on DD and the logistics of CDs in late 2024.

Thanks for your time!

-e



Erica Sollberger, PLA (*she/her*)
Design & Construction Project Manager
Rebuild, City of Philadelphia
rebuild.phila.gov

From: LeeAnn Suen <LeeAnn.Suen@phila.gov>
Sent: Monday, June 17, 2024 12:06 PM
To: Erica Sollberger <Erica.Sollberger@phila.gov>; Marguerite Anglin <Marguerite.Anglin@phila.gov>
Subject: OACCE/Rebuild - West Mill Creek

Erica, Marguerite,

Connecting you two directly about setting up a time to talk about the West Mill Creek statue, *Decline and Rise*.

Best,
LeeAnn



LeeAnn Suen, RA NOMA (*she/her*)
Design & Construction Project Manager
City of Philadelphia
Office (215) 988-3810
Mobile (267) 882-8404
leeann.suen@phila.gov

rebuild.phila.gov

Follow us on [Instagram](#) & [Facebook](#)!

[Sign up](#) to receive email updates and news from Rebuild.

Summary of Construction Costs

	Base Scope
Area E – Main Playground	\$2.0M
Area G – Brown St Plaza	\$500K
TOTAL	\$2.5M

Rebuild funds = **\$2.0M**

ITEF Commitment = **\$500K***

Total **\$2.5M**

*(commitment for Brown Street Plaza only)