

EZ SIGNS, LLC
1839 Bustleton Pike
Feasterville, PA 19053
P: 1 (866) 349-5444
F: (215) 676-3269

EZ SIGNS LLC
1 (866) FIX-LIGHT

October 1, 2024

Re: Sign Install for JD
1530-32 CHESTNUT ST

Scope of work:

SIGN A - Install one (1) statically LED-lit accessory wall sign 16.31 SQ FT

SIGN B - Install one (1) statically LED-lit accessory wall sign 16.31 SQ FT

Currently, there are no signs on either wall elevation.

Natalya Atroshyna
EZ SIGNS LLC
1839 Bustleton Pike
Feasterville, PA 19053
p. 267- 406 - 0273
e. permits@signsinstall.com

PROJECT SCHEDULE

PROJECT:



SIGN TYPE/ DESCRIPTION:	QTY.:	PG.
A. ILLUMINATED FACE-LIT LETTERS 'JD' SUSPENDED ON HORIZONTAL RAILS	ONE(1)	
B. ILLUMINATED FACE-LIT LETTERS 'JD' W/ BACKER SUSPENDED ON MULLION	ONE(1)	

JD SPORTS # 1240
1530 CHESTNUT STREET
PHILADELPHIA, PA 19102

VICINITY MAP



CLIENT & LOCATION



JD SPORTS # 1240
1530 CHESTNUT STREET
PHILADELPHIA, PA 19102

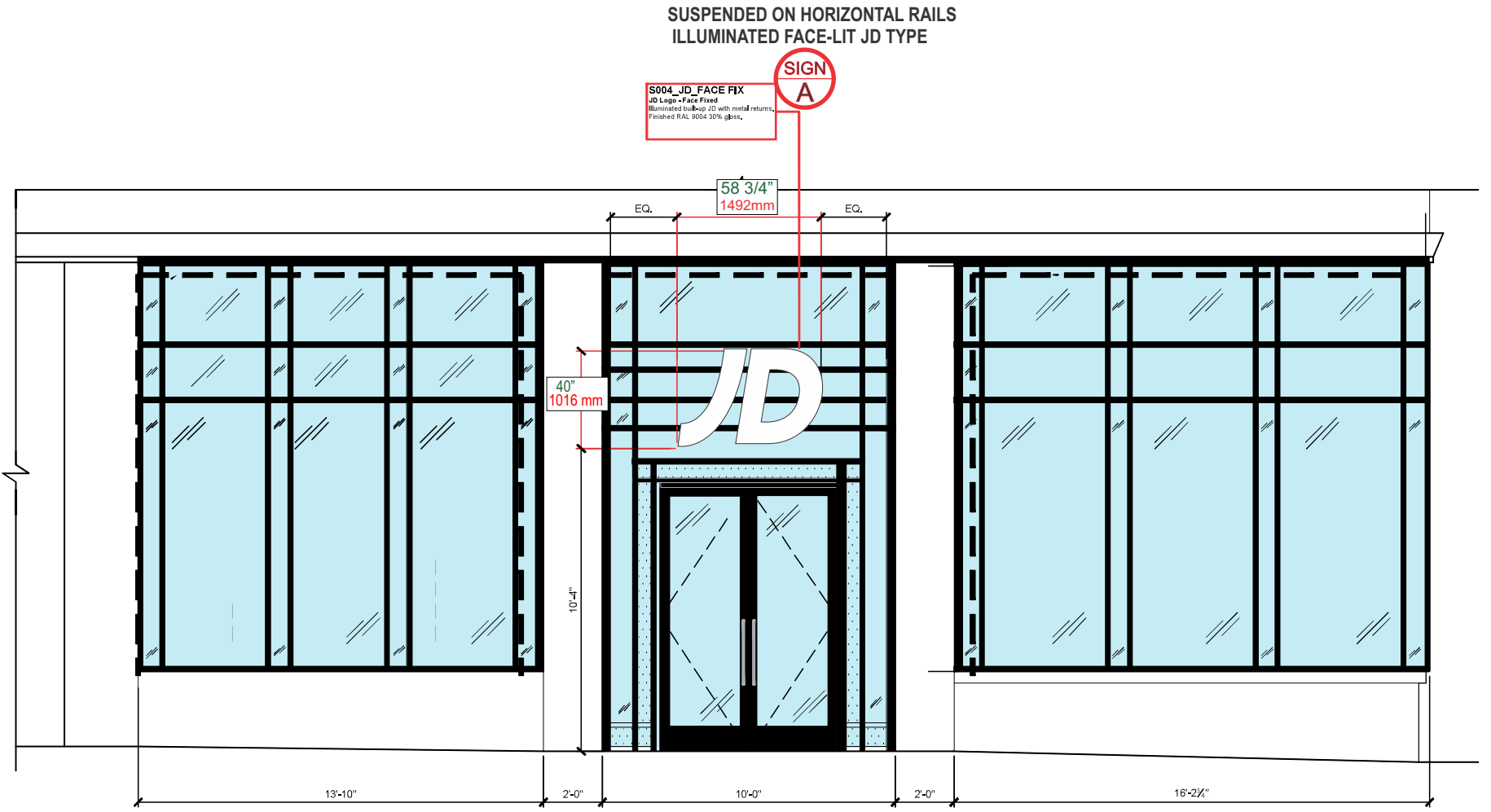


Existing Elevation

Window vinyl to be removed ONLY



Proposed Elevation



Proposed Elevation



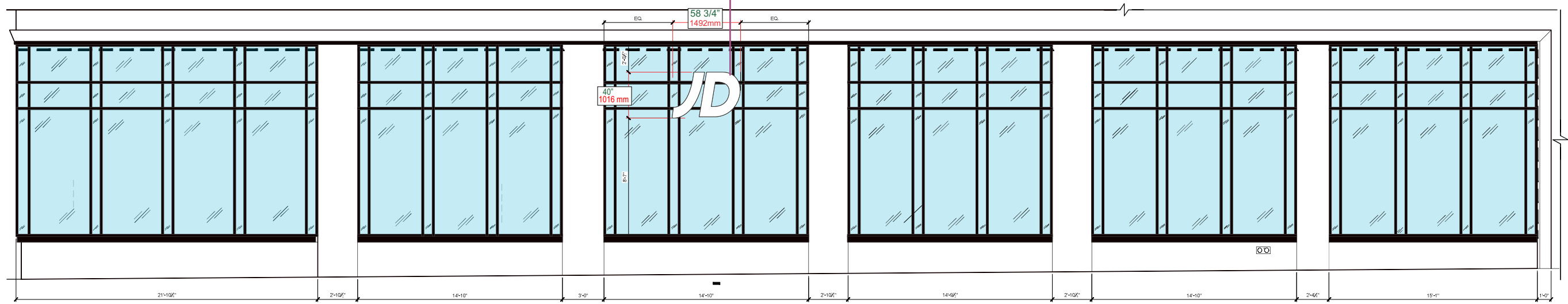
Existing Elevation

Vinyl to be removed only



Proposed Elevation

SIGN B ILLUMINATED FACE-LIT LETTERS 'JD' W/ BACKER SUSPENDED ON MULLION



Proposed Elevation

Replace one (1) statically LED-lit accessory sign

FACE-LIT ILLUM. LOGO TYPE ON HORIZONTAL RAILS

SCALE: 3/4"=1'-0"

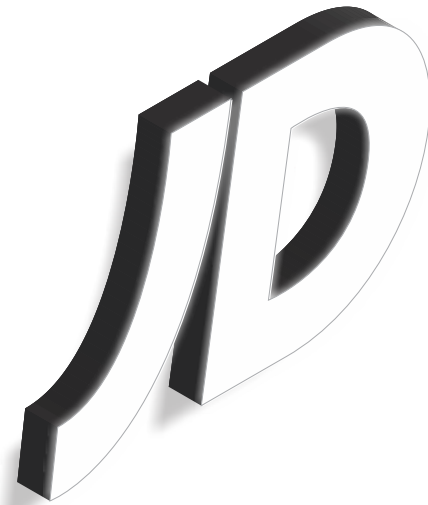
QTY.: ONE(1)

AREA: 40" x 58.75" = 16.31' \sphericalangle

SIGN WEIGHT : 65 LBS. EST.

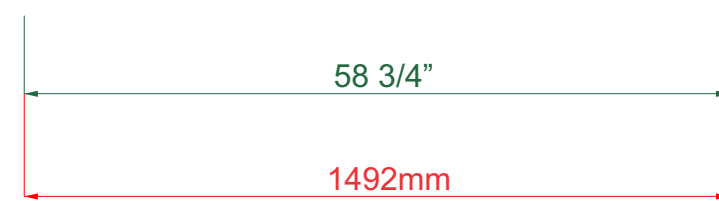
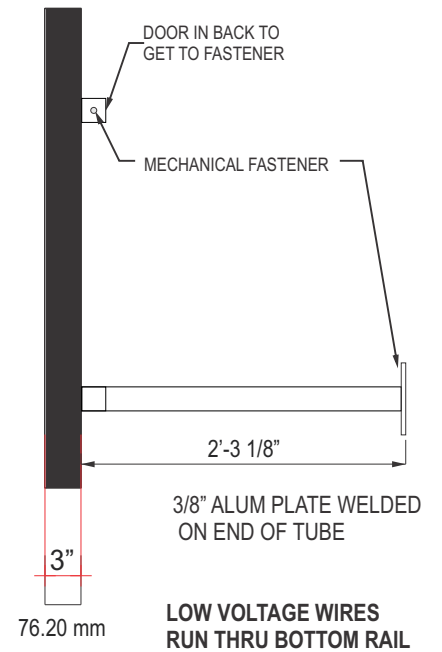
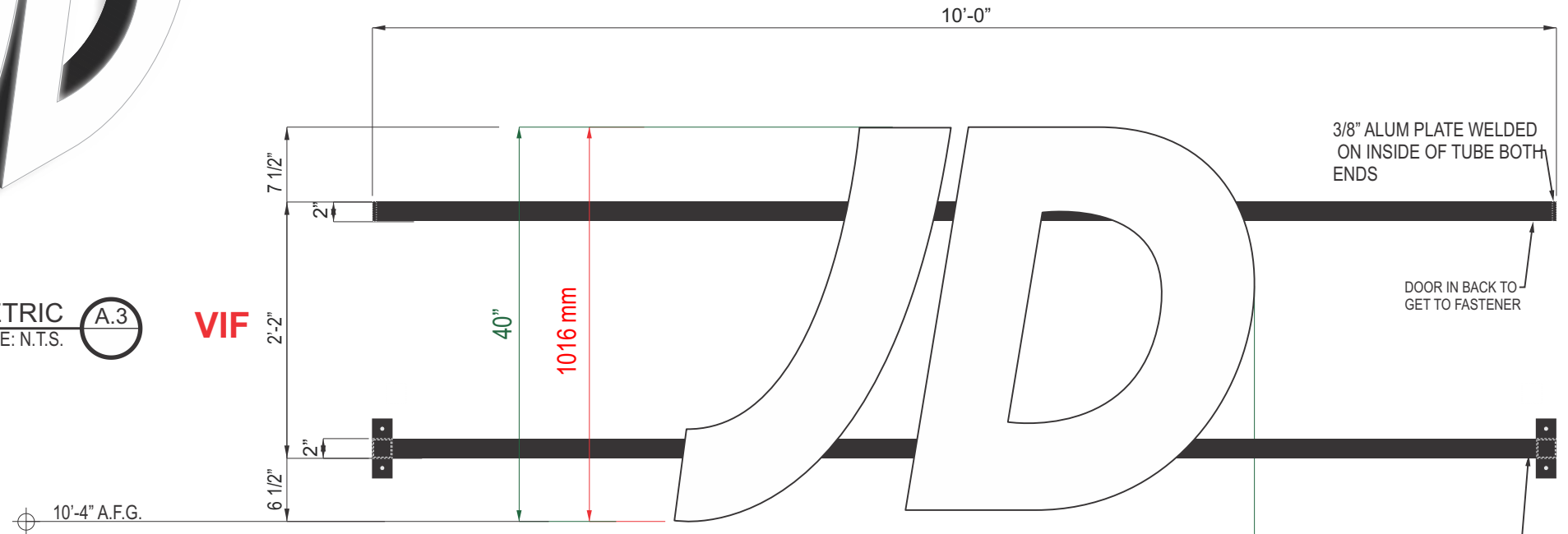
A

A



ISOMETRIC
SCALE: N.T.S. **A.3**

VIF



FRONT **A.2**

RAILS COLOR/FINISH RAL 9004 30% GLOSS.

PREVIOUS TENANT'S DOORWAY



was removed

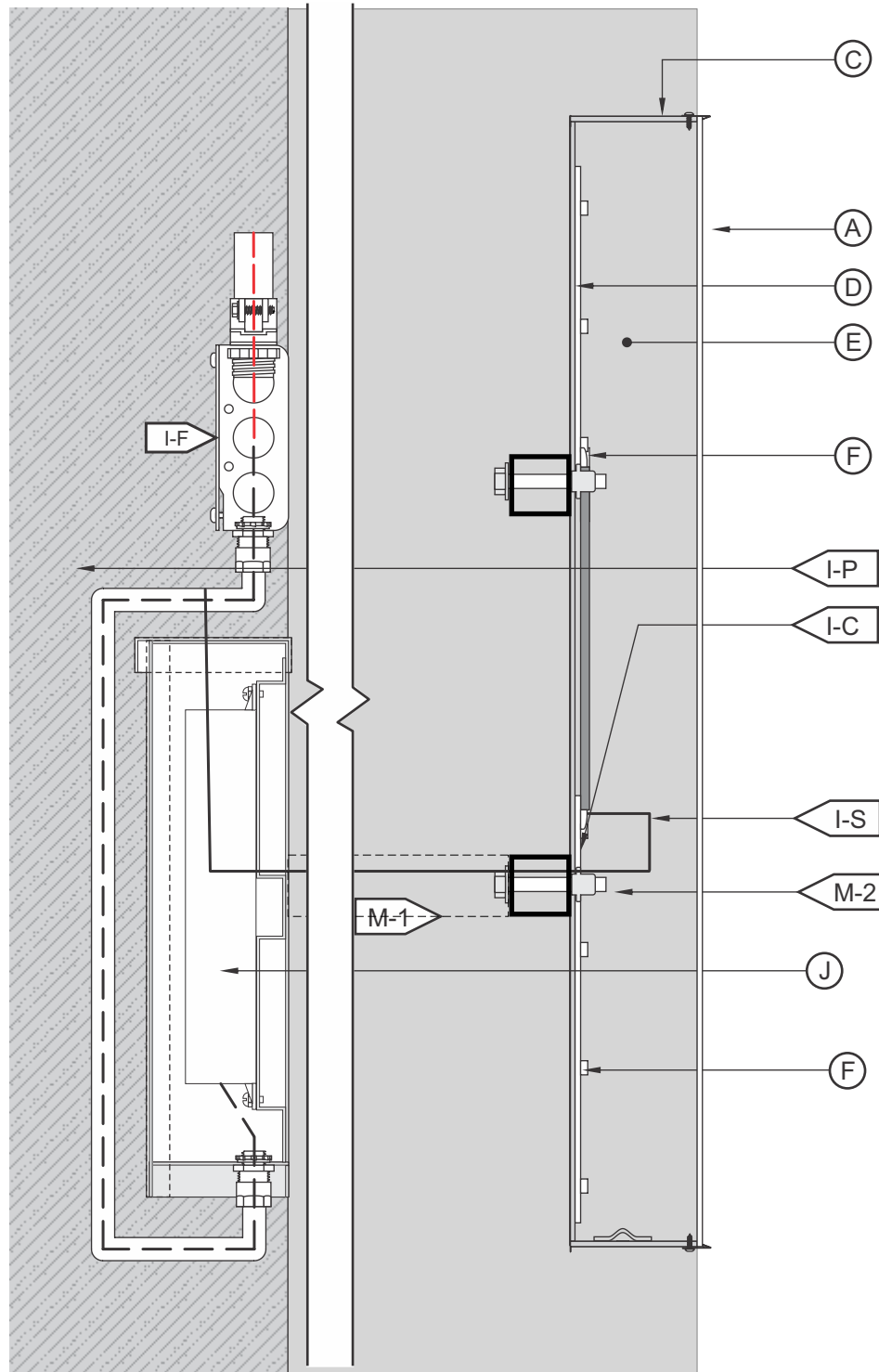
SURVEY MEASUREMENT OF DOORWAY



TYP. FACE-LIT ILLUM. TYPE - SECTION DETAIL

EXTERIOR

SCALE: N.T.S.



S004 T1

(A) FACE	
MATERIAL:	3/16" #2447 'WHITE' AUTOGLASS OR EQUAL ACRYLIC
VINYL:	N/A
(B) TRIM CAP	
SIZE / FINISH	1" / MATCH RETURNS
(C) RETURN	
DEPTH:	3" (75mm)
MATERIAL:	0.040" (1mm) ALUM.
COLOR/ FINISH:	FINISH RAL 9004 30% GLOSS.
(D) BACK	
MATERIAL:	3mm ACM.
COLOR/ FINISH:	FINISH RAL 9004 30% GLOSS.
(E) INSIDE OF SIGN	
FINISH:	FINISHED WHITE.
(F) ILLUMINATION	
TYPE:	GE TETRA MINIMAX GEN 3 WHITE LEDS. SEE FAB. NOTE.
(G) HORIZONTAL RAILS	
MATERIAL:	2" X 2" X 1/4" ALUM. SQ. TUBE ATTACHED TO BOTH SIDES OF WALLS(FEED THRU BOTTOM RAIL RETURN TO MULLION)
COLOR/ FINISH:	FINISH RAL 9004 30% GLOSS.

(I) WIRING	
I-F: FEED	SEE ELEC. NOTE. 120V PRIMARY IN J-BOX BY OTHERS.
I-P: PRIMARY	12awg FEED IN Ø1/2" (12.7mm) SEAL-TITE w/ CONNECTORS.
I-S: SECONDARY	U/L APPROVED CLASS II LOW VOLTAGE WIRING.
I-C: CONNECTOR	Ø7/8" (22.2mm) HOLE @ LEXAN w/ Ø1/2" (12.7mm) PAIGE WALL BUSTER CONNECTOR & CONDUIT.
(J) POWER SUPPLY	
FEED:	FEED RAN THRU BOTTOM TUBE
TYPE:	REMOTE LED POWER SUPPLY & DISCONNECT SWITCH IN FRONT ACCESS WEATHER-PROOF LED POWER SUPPLY BOX.
VOLTAGE:	120V.
(M) MOUNTING	
SEE INSTALLATION NOTE.	
M-1:	2- 2" x2" ALUM. TUBE SPAN AND ATTACHED TO MULLION AND TO SIDE OF DOORWAY
M-2:	1/4"-20 S.S. ALL-THREAD, NUT & WASHER .
(W) WEEP HOLE	
1/4" DIA WEEP HOLES / COVERED WITH LIGHT BAFFLES	

**120V
INSTALL**

1. CUSTOMER G.C. TO PROVIDE ADEQUATE WOOD OR MTL. BLOCKING IN CORRELATION W/ FACADE FRAMING AS REQUIRED.
2. INSTALLER IS TO V.I.F. & PROVIDE THE PROPER NON-CORROSIVE MOUNTING HARDWARE TO ENSURE SAFE INSTALLATION.
3. ALL EXTERIOR FACADE PENETRATIONS TO BE WATERTIGHT.
4. INSTALLATION TO MEET CURRENT N.E.C., U.L. & LOCAL CODES. LOCATION OF THE DISCONNECT SWITCH AFTER INSTALLATION SHALL COMPLY WITH ARTICLE 600.6(A) (1) OF THE NATION ELECTRICAL CODE

ELECTRICAL

1. ALL ELECTRICAL COMPONENTS TO BE U.L. APPROVED.
2. CUSTOMER IS RESPONSIBLE FOR ONE (1) 120v/ 20a DEDICATED CIRCUIT w/ GROUND PER SIGN TO WITHIN 6' OF SIGN.
3. THIS SIGN IS INTENDED TO BE INSTALLED IN ACCORDING W/ THE REQUIREMENTS OF ARTICLE 600 OF THE NATIONAL ELECTRICAL CODE AND/OR OTHER APPLICABLE LOCAL CODES. THIS INCLUDES PROPER GROUNDING & BONDING OF THE SIGN.

FABRICATOR

1. PLACEMENT OF LIGHTING ELEMENTS FOR OPTIMUM ILLUMINATION OF SIGN TO BE DETERMINED IN PRODUCTION.
2. MANUFACTURER & U.L. LABELS TO BE APPLIED & VISIBLE FROM THE GROUND. LOCATED ON THE LAST CHANNEL LETTER OR END OF THE SIGN BOX/FREESTANDING SIGN



ALL ELECTRICAL COMPONENTS ARE TO BE UL APPROVED

Replace one (1) statically LED-lit accessory sign

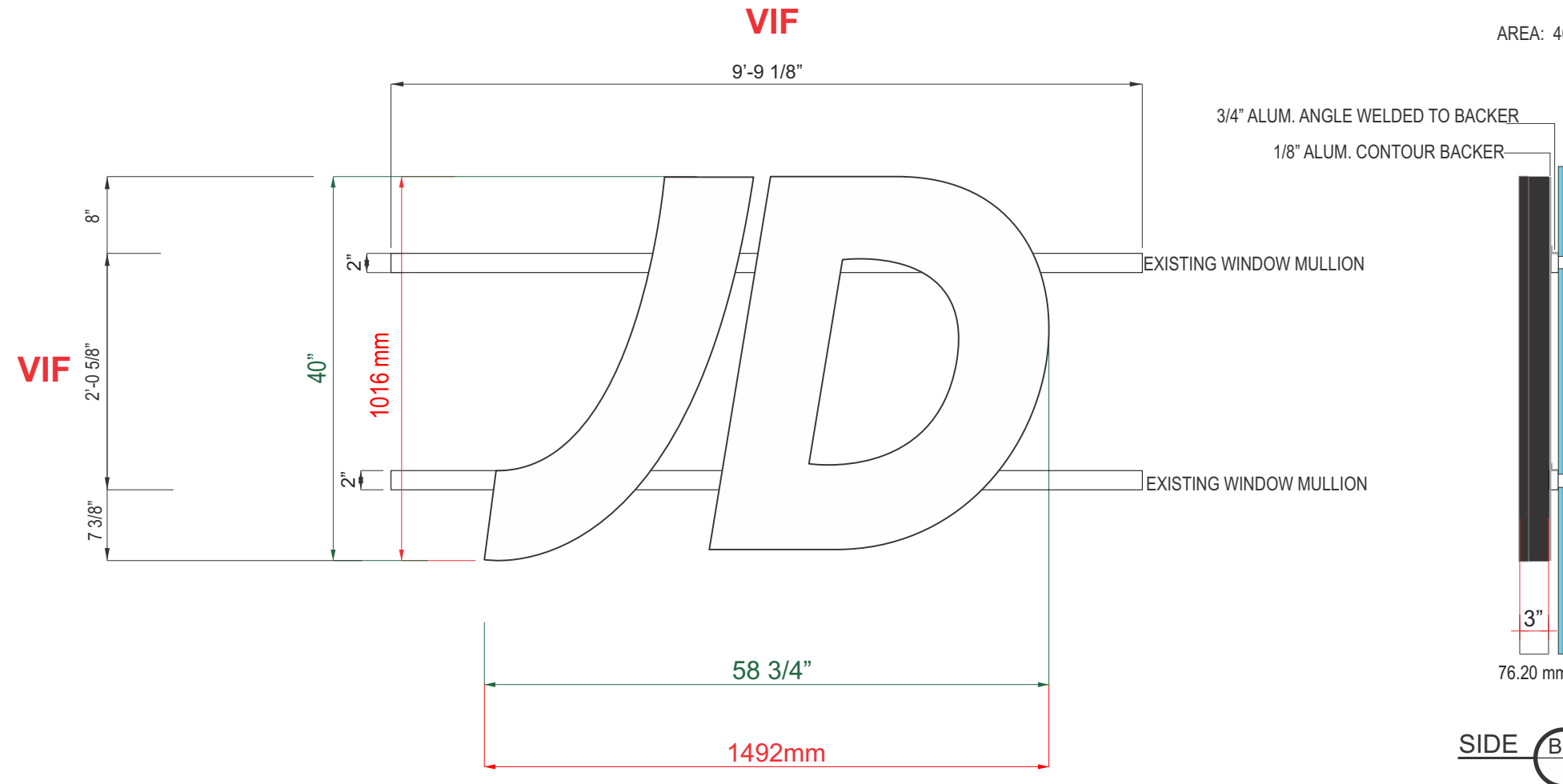
FACE-LIT ILLUM. LOGO TYPE ON BACKER W/ HORIZONTAL ANGLE

B

SCALE: 3/4"=1'-0"

QTY.: ONE(1)

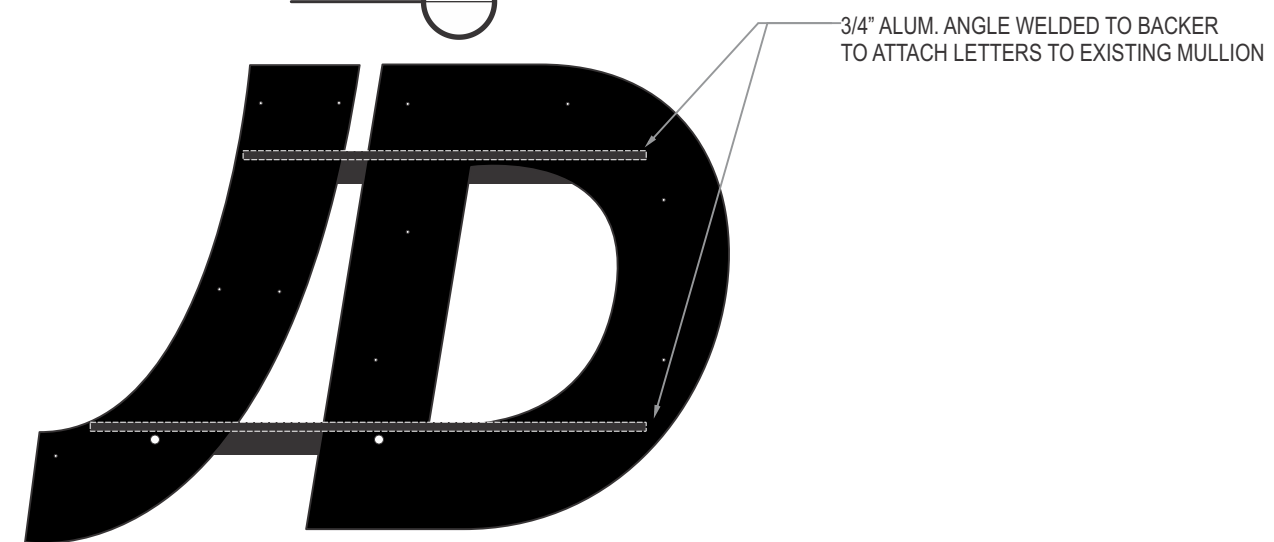
AREA: 40" x 58.75" = 16.31' \sphericalangle



EXISTING CONDITION



FRONT B.2

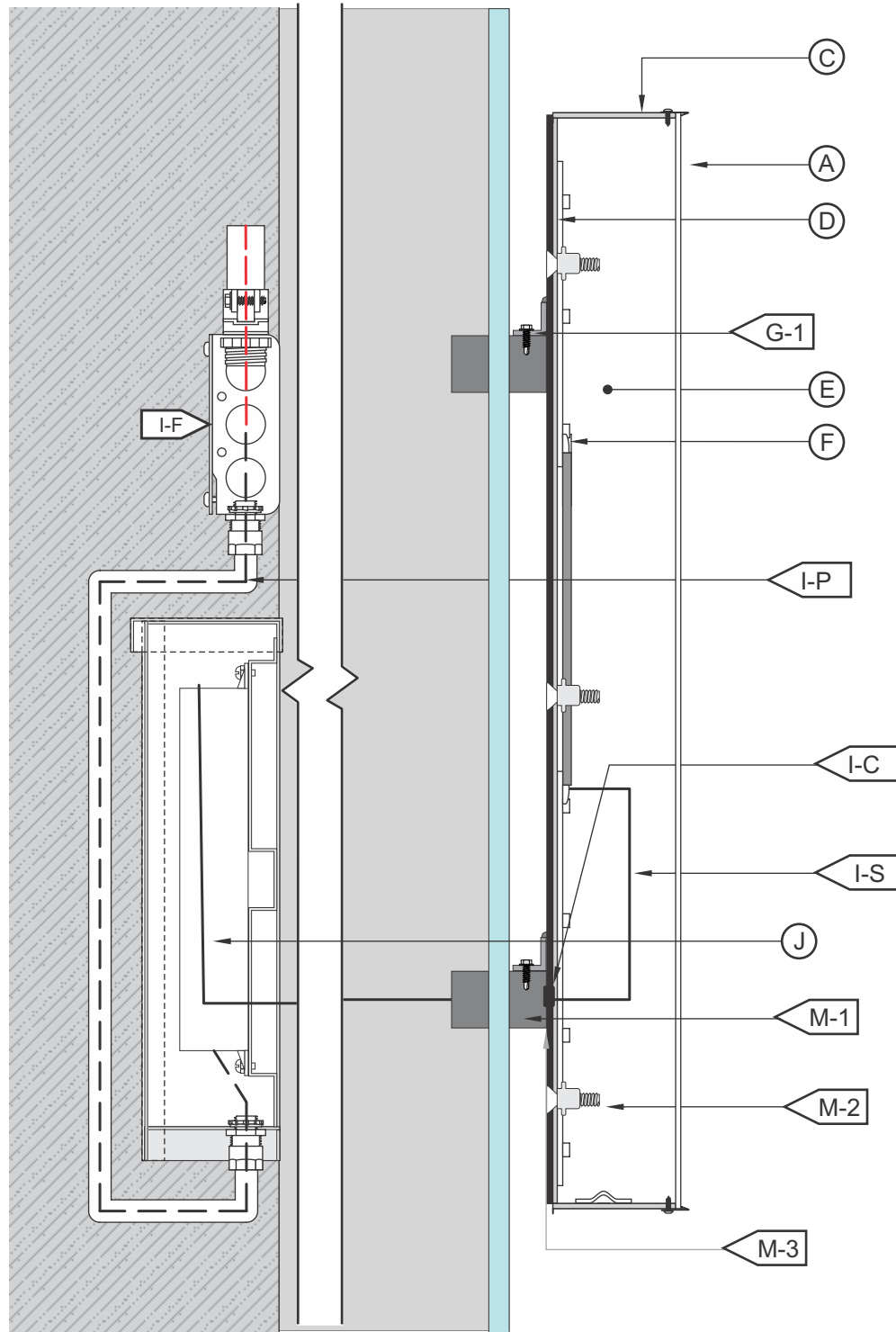


TYP. FACE-LIT ILLUM. TYPE - SECTION DETAIL

EXTERIOR

SCALE: N.T.S.

VERIFY IF MULLION CAN SUPPORT LETTERS



S004 T1

(A) FACE	
MATERIAL:	3/16" #2447 'WHITE' AUTOGLASS OR EQUAL ACRYLIC
VINYL:	N/A
(B) TRIM CAP	
SIZE / FINISH	1" / MATCH RETURNS
(C) RETURN	
DEPTH:	3" (75mm)
MATERIAL:	0.040" (1mm) ALUM.
COLOR/ FINISH:	FINISH RAL 9004 30% GLOSS.
(D) BACK	
MATERIAL:	3mm ACM.
COLOR/ FINISH:	FINISH RAL 9004 30% GLOSS.
(E) INSIDE OF SIGN	
FINISH:	FINISHED WHITE.
(F) ILLUMINATION	
TYPE:	GE TETRA MINIMAX GEN 3 WHITE LEDS. SEE FAB. NOTE.
(G) CONTOUR BACKER	
MATERIAL:	1/8" ALUMINUM
COLOR/ FINISH:	FINISH RAL 9004 30% GLOSS.
G-1 MATERIAL:	3/4" X 3/4" X 1/8" ALUM. ANGLE WELDED TO BACK VIF

(I) WIRING	
I-F: FEED	SEE ELEC. NOTE. 120V PRIMARY IN J-BOX BY OTHERS.
I-P: PRIMARY	12awg FEED IN Ø1/2" (12.7mm) SEAL-TITE w/ CONNECTORS.
I-S: SECONDARY	U/L APPROVED CLASS II LOW VOLTAGE WIRING.
I-C:	RUBBER GROMMET
(J) POWER SUPPLY	
TYPE:	REMOTE LED POWER SUPPLY & DISCONNECT SWITCH IN FRONT ACCESS WEATHER-PROOF LED POWER SUPPLY BOX.
VOLTAGE:	120V.
(M) MOUNTING	
M-1:	SEE INSTALLATION NOTE.
M-2:	EXTERIOR MULLION
M-3:	FLAT HEAD SCREW AND NUTSERT
	APPLY SILICONE BETWEEN MULLION AND BACKER
(W) WEEP HOLE	
	1/4" DIA WEEP HOLES / COVERED WITH LIGHT BAFFLES

**120V
INSTALL**

1. CUSTOMER G.C. TO PROVIDE ADEQUATE WOOD OR MTL. BLOCKING IN CORRELATION W/ FACADE FRAMING AS REQUIRED.
2. INSTALLER IS TO V.I.F. & PROVIDE THE PROPER NON-CORROSIVE MOUNTING HARDWARE TO ENSURE SAFE INSTALLATION.
3. ALL EXTERIOR FACADE PENETRATIONS TO BE WATERTIGHT.
4. INSTALLATION TO MEET CURRENT N.E.C., U.L. & LOCAL CODES. LOCATION OF THE DISCONNECT SWITCH AFTER INSTALLATION SHALL COMPLY WITH ARTICLE 600.6(A) (1) OF THE NATION ELECTRICAL CODE

ELECTRICAL

1. ALL ELECTRICAL COMPONENTS TO BE U.L. APPROVED.
2. CUSTOMER IS RESPONSIBLE FOR ONE (1) 120v/ 20a DEDICATED CIRCUIT w/ GROUND PER SIGN TO WITHIN 6' OF SIGN.
3. THIS SIGN IS INTENDED TO BE INSTALLED IN ACCORDING W/ THE REQUIREMENTS OF ARTICLE 600 OF THE NATIONAL ELECTRICAL CODE AND/OR OTHER APPLICABLE LOCAL CODES. THIS INCLUDES PROPER GROUNDING & BONDING OF THE SIGN.

FABRICATOR

1. PLACEMENT OF LIGHTING ELEMENTS FOR OPTIMUM ILLUMINATION OF SIGN TO BE DETERMINED IN PRODUCTION.
2. MANUFACTURER & U.L. LABELS TO BE APPLIED & VISIBLE FROM THE GROUND. LOCATED ON THE LAST CHANNEL LETTER OR END OF THE SIGN BOX/FREESTANDING SIGN



ALL ELECTRICAL COMPONENTS ARE TO BE UL APPROVED



6th ST



1530









OPENING SOON
WANT TO JOIN
THE SQUAD?

JOIN THE SQUAD TO EXPLORE
THE WORLD OF JD

JD

EXCLUSIVE
GLOBAL
STYLES.
ONLY AT JD

JD

OPENING SOON
WANT TO JOIN
THE SQUAD?

EXCLUSIVE
GLOBAL
STYLES.
ONLY AT JD

EXCLUSIVE
GLOBAL
STYLES.
ONLY AT JD

OPENING SOON
WANT TO JOIN
THE SQUAD?

EXCLUSIVE
GLOBAL
STYLES.
ONLY AT JD

JD

EXCLUSIVE
GLOBAL
STYLES.
ONLY AT JD

EXCLUSIVE
GLOBAL
STYLES.
ONLY AT JD



OPENING SOON
WANT TO JOIN
THE SQUAD?

EXCLUSIVE
GLOBAL
STYLES.
ONLY AT JD

OPENING SOON
WANT TO JOIN
THE SQUAD?



EXCLUSIVE
GLOBAL
STYLES.
ONLY AT JD



EXCLUSIVE GLOBAL STYLES. ONLY AT JD

OPENING SOON WANT TO JOIN THE SQUAD?

OPENING SOON WANT TO JOIN THE SQUAD?

EXCLUSIVE GLOBAL STYLES. ONLY AT JD

EXCLUSIVE GLOBAL STYLES. ONLY AT JD





Porrabella

16th St

DO NOT BLOCK THE BOX

JD
EXCLUSIVE GLOBAL STYLES ONLY AT JD



1530

Visit Us!
The Museum, Library
and Manuscript
Department
150 Years

15th St



Wells Fargo bank

