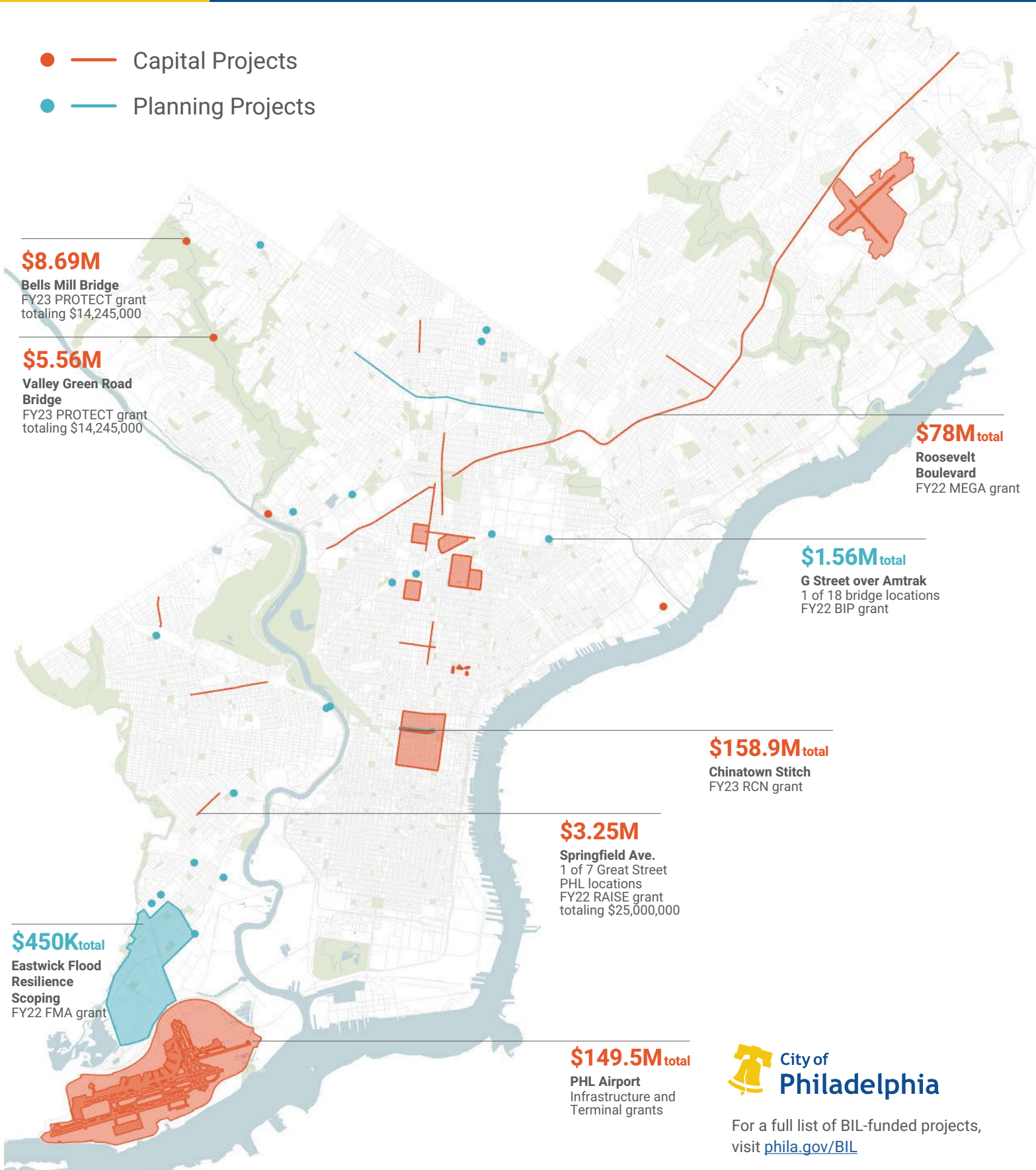


PHILADELPHIA

Select Bipartisan Infrastructure Law (BIL) Investments

- — Capital Projects
- — Planning Projects



For a full list of BIL-funded projects, visit phila.gov/BIL



The City of Philadelphia is utilizing historic levels of funding from the federal Bipartisan Infrastructure Law (BIL) to create a **safer, cleaner, and greener Philadelphia with economic opportunity for all.**

BUSINESS PARTICIPATION INITIATIVES

SupplyPHL

SupplyPHL is an integrated public-private partnership that aims to address economic disparities, build an equitable economy with quality local jobs and economic mobility, and stand up an equitable capital program.

PROCUREMENT FORECAST

In October 2023, IST released the City's first ever Public Works Procurement Forecast. In April 2024, we released its six-month update of expected projects over the next 18-24 months accounting for over \$520 million in upcoming work.

WORKFORCE DEVELOPMENT INITIATIVES

WHITE HOUSE WORKFORCE HUB

President Biden announced Philadelphia as one of four new Workforce Hubs to create good jobs and ensure that workers, including those who have historically been left behind, have equitable access to training and job opportunities in infrastructure.

GEOGRAPHIC AND ECONOMIC HIRING PREFERENCES (GEHP)

The City will include geographic and economic hiring preferences on select public works contracts to increase access and participation of historically underrepresented communities in infrastructure apprenticeships, projects, and careers.

PLUG IN PHILLY

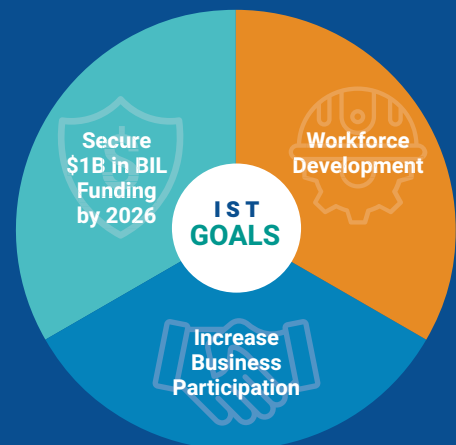
The City is leading Plug in Philly, which is a pre-apprenticeship pilot program to recruit and train diverse Philadelphians for careers in electric vehicle supplies and equipment (EVSE).

RAISE GREAT STREETS PHL

Workers participating in Registered Apprenticeship and pre-apprenticeship programs will receive supportive services such as childcare, transportation assistance, and training stipends, as well as worksite safety training.

Ensuring investments from the BIL grow generational wealth for Philadelphians, especially people of color who have historically been excluded from opportunity, is central to the IST's mission.

Infrastructure Solutions Team Goals



Geographic and Economic Hiring Preferences

- Priority Zip Codes Located in Philadelphia

