

ADDRESS: 1615 GREEN ST UNIT 2

Proposal: Install two Fibrex windows at second floor

Review Requested: Final Approval

Owner: Corbin Mills

Applicant: Nunzio Terra, Renewal by Andersen

History: 1859; Interior and exterior, 1985

Individual Designation: None

District Designation: Spring Garden Historic District, Contributing, 10/11/2000

Staff Contact: Dan Shachar-Krasnoff, daniel.shachar-krasnoff@phila.gov

OVERVIEW: This application proposes to install Andersen Fibrex windows in two second-floor front façade window openings. The proposed two-over-two simulated-divided-light windows do not match the original in terms of materials, and the Andersen insert window will build down the openings. One of the provided section drawings depicts a sash replacement kit in a plank frame, not a full-frame system with ogee brickmould, and is therefore inaccurate. Commission staff informed the applicant of this and asked for accurate drawings, but nothing additional or revised has been submitted. The existing brickmould should remain exposed as part of any window replacement and should not be capped.

1615 Green Street is one of 12 semi-detached houses on the north side of the 1600 block of Green Street. It was built c. 1859 and rehabilitated using Historic Tax Credits in 1985. Although the applicant states that the current windows are vinyl, they appear to date from a 2007 wood sash replacement application.

SCOPE OF WORK:

- Install Fibrex windows on second floor front facade of building.

STANDARDS FOR REVIEW:

The Secretary of the Interior's Standards for the Treatment of Historic Properties and Guidelines include:

- *Standard 6: Deteriorated historic features will be repaired rather than replaced. Where the severity of deterioration requires replacement of a distinctive feature, the new feature will match the old in design, color, texture, and, where possible, materials. Replacement of missing features will be substantiated by documentary and physical evidence.*
 - The application provides insufficient and conflicting details on the installation of the composite material window, failing to satisfy Standard 6.

STAFF RECOMMENDATION: Denial, pursuant to Standard 6 and owing to incompleteness.



Figure 1: 1615 Green Street parcel



Figure 2: 1615 Green Street (left) primary elevation. The application proposes replacing the two 2nd story windows. No work to side bay window.

Re: 1615 Green St Apt B Philadelphia Revised/Corrected

Kim Chantry <Kim.Chantry@Phila.gov>

Mon 8/12/2024 3:38 PM

To:Nunzio Terra <nterra@renewalphilly.com>

Cc:preservation <preservation@Phila.gov>

Hi Nunzio,

I wanted to follow up on my email below to see if you intend to submit a revised section drawing which depicts the proposal at 1615 Green Street rather than a depiction from a very different window proposal.

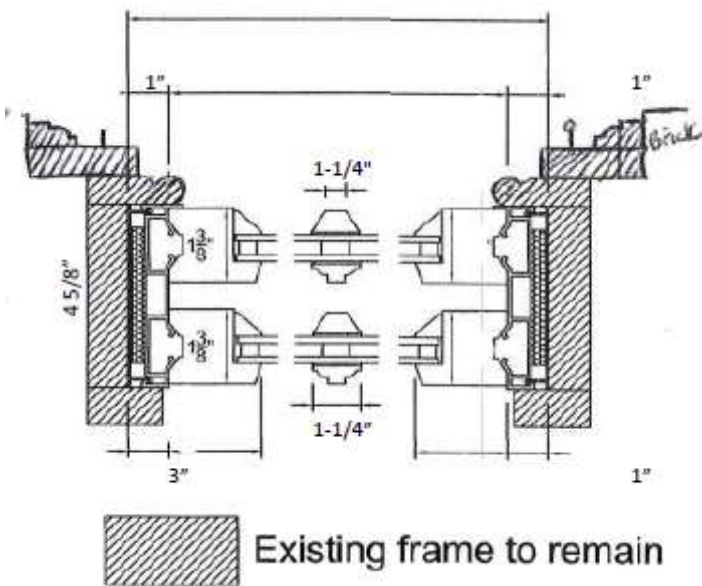
Thanks,

Kim Chantry
Historic Preservation Planner Supervisor
Philadelphia Historical Commission
Kim.Chantry@phila.gov

From: Kim Chantry <Kim.Chantry@Phila.gov>
Sent: Tuesday, July 16, 2024 8:14 AM
To: Nunzio Terra <nterra@renewalphilly.com>
Cc: preservation <preservation@Phila.gov>
Subject: Re: 1615 Green St Apt B Philadelphia Revised/Corrected

Nunzio,

We will place this on the next round of meetings, which has a application submission deadline of August 13, placing it on an Architectural Committee meeting of August 27 and a Historical Commission meeting of September 13. I will just note that this section drawing, taken from an Emerald Window application, in no way depicts the proposal here or the existing frame and brickmould for 1615 Green Street. This shows a sash replacement kit with plank frame. You may want to use the time to provide an accurate section drawing.



Thanks,

Kim Chantry
Historic Preservation Planner Supervisor
Philadelphia Historical Commission
Kim.Chantry@phila.gov

From: Nunzio Terra <nterra@renewalphilly.com>
Sent: Monday, July 15, 2024 7:16 PM
To: Kim Chantry <Kim.Chantry@Phila.gov>
Subject: Re: 1615 Green St Apt B Philadelphia Revised/Corrected

External Email Notice. This email comes from outside of City government. Do not click on links or open attachments unless you recognize the sender.

Hi Kim,

Please see the attached revised application. I noted in the letter that we will use an ogee profile. Can we please get on the schedule for the next meetings?

Thank you,

Nunzio Terra

*Senior Project Consultant
Renewal by Andersen of Greater Philadelphia*

E: nterra@renewalphilly.com
C: 215-416-2574

761 5th Ave, Suite 3
King of Prussia, PA 19406

Renewal by Andersen sells, installs, and services energy-efficient replacement windows resulting in beautiful homes and delighted homeowners throughout the country.

On May 3, 2024, at 4:30 PM, Nunzio Terra <nterra@renewalphilly.com> wrote:

Hi Kim,

Thank you so much for getting back to me. I will make the changes.

Nunzio Terra

*Senior Project Consultant
Renewal by Andersen of Greater Philadelphia*

E: nterra@renewalphilly.com
C: 215-416-2574

761 5th Ave, Suite 3
King of Prussia, PA 19406

Renewal by Andersen sells, installs, and services energy-efficient replacement windows resulting in beautiful homes and delighted homeowners throughout the country.

On May 3, 2024, at 8:08 AM, Kim Chantry <Kim.Chantry@phila.gov> wrote:

CAUTION: This email was sent from someone outside of Esler Companies. Do not click links or open attachments unless you recognize the sender and know the content is safe.

Hi Nunzio,

There are some inconsistencies with the application documents which you would need to correct before we can review. The section drawings show a sash replacement kit, but the Fibrex window is a full frame replacement within the existing frame. Grilles between glass is circled on a spec page but the section drawings show full divided light. The grille width shown on the section drawing is 7/8" but that is not correct when it's a 2/2 window, which is closer to 1-1/4 to 1-1/2" width with putty slope. The existing brickmold to remain on the section drawing shows a plank frame, but the existing windows are an ogee profile.

Thanks.

Kim Chantry
Historic Preservation Planner Supervisor
Philadelphia Historical Commission
Kim.Chantry@phila.gov

From: Nunzio Terra <nterra@renewalphilly.com>
Sent: Thursday, May 2, 2024 5:54 PM
To: Kim Chantry <Kim.Chantry@Phila.gov>
Subject: 1615 Green St Apt B Philadelphia Revised/Corrected

External Email Notice. This email comes from outside of City government. Do not click on links or open attachments unless you recognize the sender.

Hi Kim,

Please see attached revised and corrected application for this property. Please advise if this could be approved that staff level. If not, can you please put us on for the next to historical and architectural meetings. Thank you so much.

Nunzio Terra
Senior Project Consultant
Renewal by Andersen of Greater Philadelphia

E: nterra@renewalphilly.com

C: 215-416-2574

761 5th Ave, Suite 3

King of Prussia, PA 19406

Renewal by Andersen sells, installs, and services energy-efficient replacement windows resulting in beautiful homes and delighted homeowners throughout the country.

APPLICATION FOR BUILDING PERMIT



CITY OF PHILADELPHIA
 DEPARTMENT OF LICENSES AND INSPECTIONS
 MUNICIPAL SERVICES BUILDING - CONCOURSE
 1401 JOHN F. KENNEDY BOULEVARD
 PHILADELPHIA, PA 19102
 For more information visit us at www.phila.gov

APPLICATION # _____

(Please complete all information below and print clearly)

ADDRESS OF PROPOSED CONSTRUCTION

1615 Green St. ^{Apt. B}, Philadelphia, PA 19130

APPLICANT:

Maggie McDevitt
 COMPANY NAME: Renewal by Andersen

PHONE # 610 228 2183 FAX # 215 307 4881

APPLICANT'S ADDRESS:

701 5th Ave Suite 3
 King of Prussia PA 19406

LICENSE # 37492 E-MAIL: ^{MMcDEVITT@Renewal} _{philly.com}

PROPERTY OWNER'S NAME:

Corbin Mills

PHONE # 215-520-2433 FAX # _____

PROPERTY OWNER'S ADDRESS:

1615 Green St. Apt B
 Philadelphia PA 19406

ARCHITECT / ENGINEER IN RESPONSIBLE CHARGE:

ARCHITECT / ENGINEERING FIRM:

PHONE # _____ FAX # _____

ARCHITECT / ENGINEERING FIRM ADDRESS:

LICENSE # _____ E-MAIL: _____

CONTRACTOR:

Renewal by Andersen of Greater Phila.
 CONTRACTING COMPANY:
 Renewal by Andersen

PHONE # 610 228 2183 FAX # 215 307 4881

CONTRACTING COMPANY ADDRESS:

701 5th Ave Suite 3
 King of Prussia PA 19406

LICENSE # 37492 E-MAIL: ^{maggiemcdev@gmail.com}

USE OF BUILDING / SPACE:

Residential

ESTIMATED COST OF WORK

\$ 7286.00

BRIEF DESCRIPTION OF WORK:

Replacing 2 vinyl windows with 2 Fibrex windows - same style, color, size, + grilles. Please see attached documents for more details.

TOTAL AREA UNDERGOING CONSTRUCTION: _____ square feet

COMPLETE THESE ITEMS IF APPLICABLE TO THIS APPLICATION:

OF NEW SPRINKLER HEADS (suppression system permits only): _____ LOCATION OF SPRINKLERS: _____

OF NEW REGISTERS / DIFFUSERS (hvac / ductwork permits only): _____ LOCATION OF STANDPIPES: _____

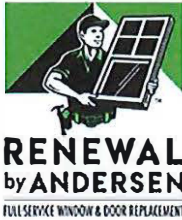
IS THIS APPLICATION IN RESPONSE TO A VIOLATION? NO YES VIOLATION #: _____

All provisions of the building code and other City ordinances will be complied with, whether specified herein or not. Plans approved by the Department form a part of this application. I hereby certify that the statements contained herein are true and correct to the best of my knowledge and belief. I further certify that I am authorized by the owner to make the foregoing application, and that, before I accept my permit for which this application is made, the owner shall be made aware of all conditions of the permit. I understand that if I knowingly make any false statement herein I am subject to such penalties as may be prescribed by law or ordinance.

APPLICANT'S SIGNATURE

Maggie McDevitt

DATE: 2, 14, 24



January 2024

To: City of Philadelphia Historical Commission

From: Renewal by Andersen (contractor) on behalf of Corbin Mills (owner)

Re: Window replacement at 1615 Green St., Apt B Philadelphia 19130

We are proposing the following work at the home of Corbin Mills: **replacement of 2 windows.**

A list of applicable materials can be found on next page; details of the new units are as follows:

2 Renewal by Andersen (RbA) Acclaim™ double-hung inserts. Fibrex windows with equal sash, White exterior, and two-over-two simulated-divided-light grilles with approx. 1.5" vertical mullion. and Ogee brickmould. Full-sized TruScene screen on each unit.

The new units have been measured to fit in the existing frame and openings; there is no need to alter the size of the existing openings. During the installation process it is common practice for us to inspect the opening after the existing unit is removed in order to ensure that the area surrounding the unit is in good shape. Any rot or damage found during that process will be addressed during the installation. Any and all debris created during installation will be handled by our crew and cleaned up before we leave the property.

I am including pertinent information from our catalog for your review, as well as supplemental documents specific to this project. If you need anything further, please do not hesitate to contact me.

Nunzio Terra
Senior Project Consultant
215-416-2574
nterra@renewalphilly.com

761 5th Ave., Suite 3
King of Prussia, PA 19406
Ph.: 215-307-4880
Fax: 215-307-4881
www.renewalbyandersen.com

Materials Checklist

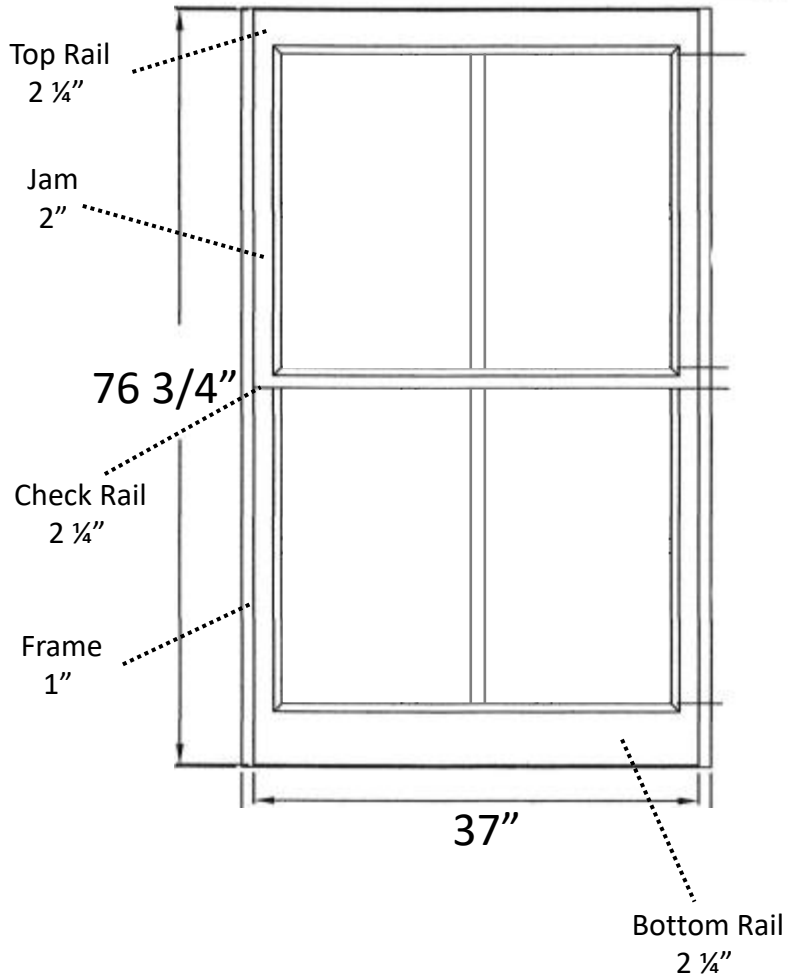
Corbin Mills
1615 Green St
Philadelphia , PA 19130
H: (215)520-2433

CATEGORY	DESCRIPTION	QUANTITY	
<hr/> This list includes the sum total all of the materials for the entire job. <hr/>			
MATERIALS	Caulk - Exterior Clear	..2 tube	<input type="checkbox"/>
MATERIALS	Caulk - Exterior White	..2 tube	<input type="checkbox"/>
MATERIALS	Coil - COLORED RBA White 437	..1 rolls	<input type="checkbox"/>
MATERIALS	Foam	..1 cans	<input type="checkbox"/>
MATERIALS	Ice & Water Shield 6"	..2 ft	<input type="checkbox"/>
MATERIALS	Paintable Caulk - White	..2 tube	<input type="checkbox"/>
<hr/>			
TRIM	Base Shoe - White Painted - 8ft	..6 x 8ft	<input type="checkbox"/>
<hr/>			

PROPOSED NEW DOUBLE-HUNG WINDOW
EQUAL SASH, WHITE EXTERIOR
TWO OVER TWO SIMULATED-DIVIDED-LIGHT GRILLES
1.5" VERTICAL MULLION / OGEE BRICKMOULD
SIZE: 37"x76^{3/4}" (SAME AS EXISTING)
2 UNITS WITH THIS SIZE/AESTHETIC - FRONT OF HOME

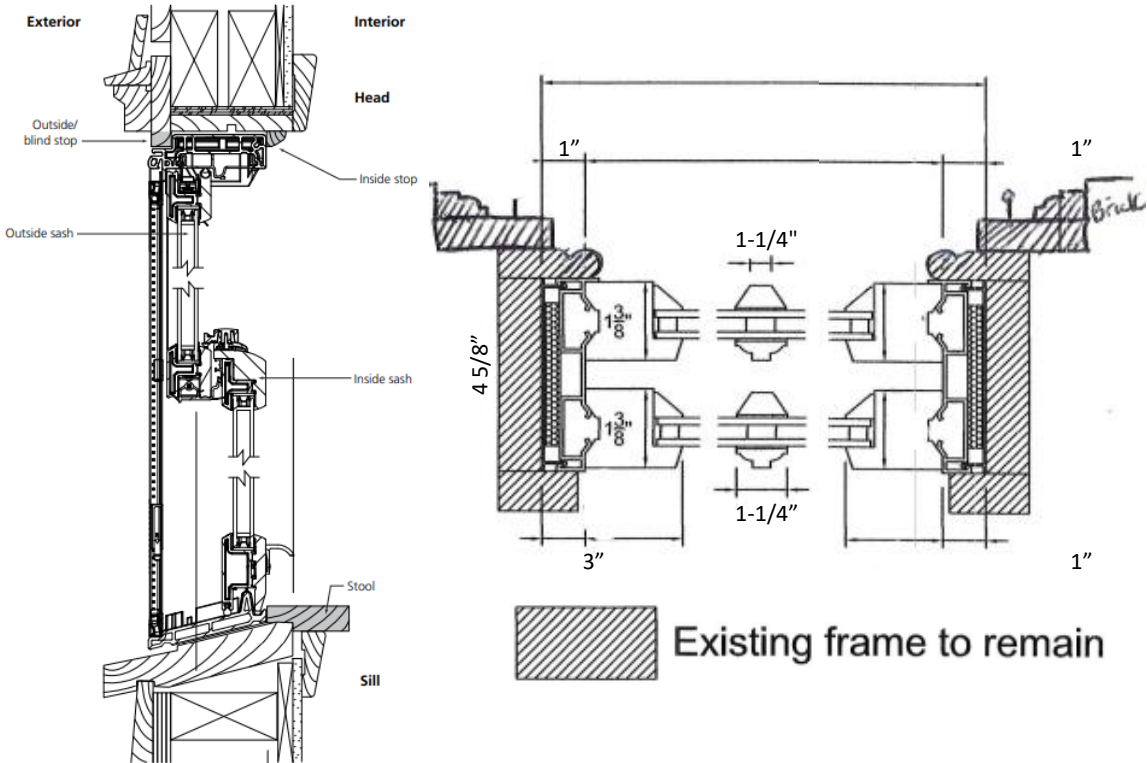


Proposed Window



Renewal by Andersen
Fibrex Window Shop Drawings

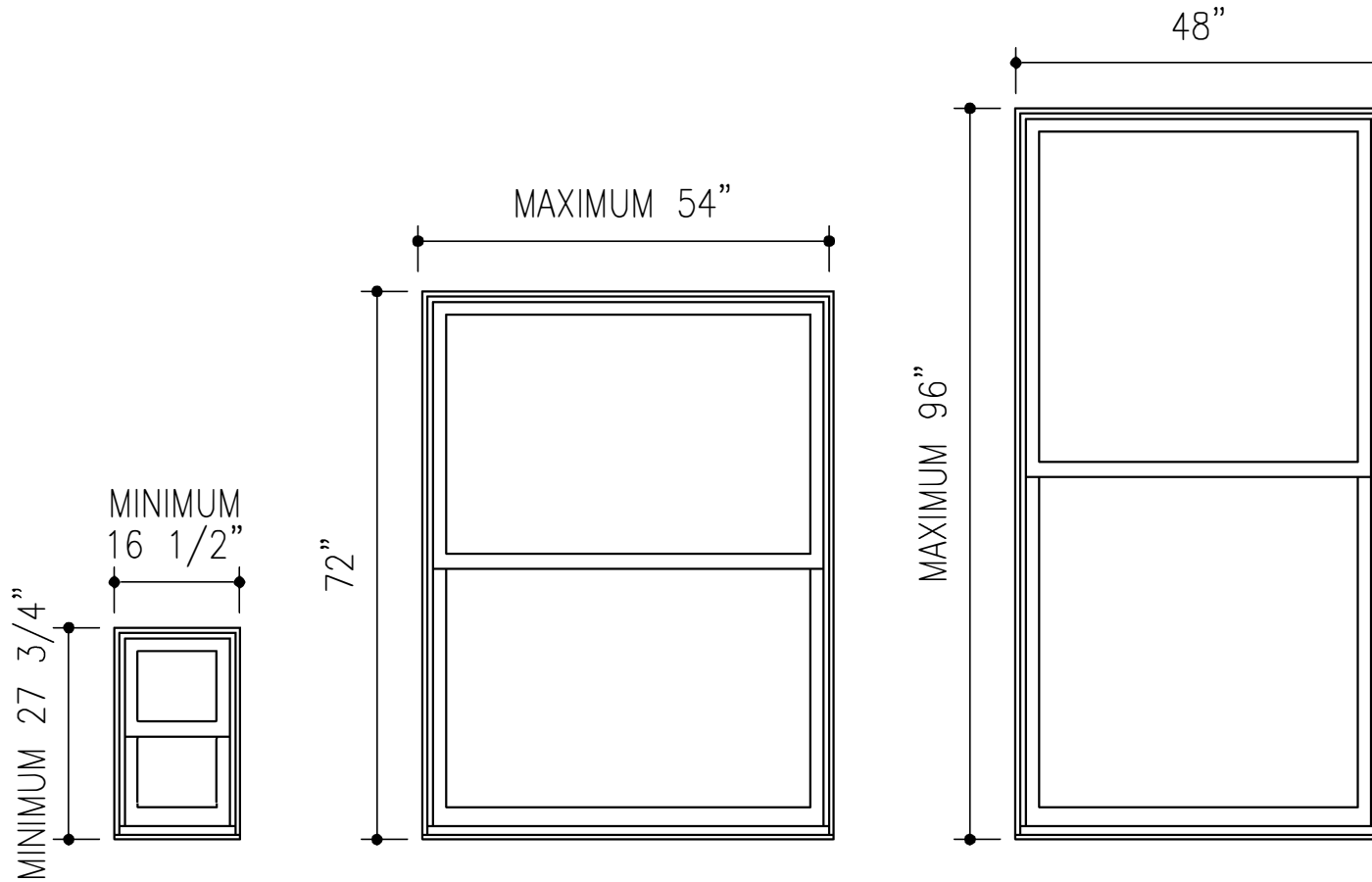
Proposed Window



Renewal by Andersen
Fibrex Window Shop Drawings

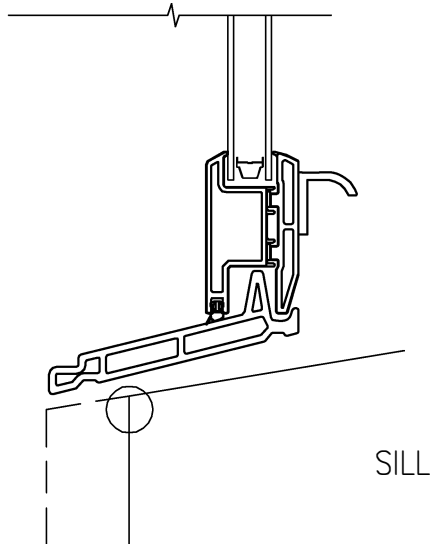
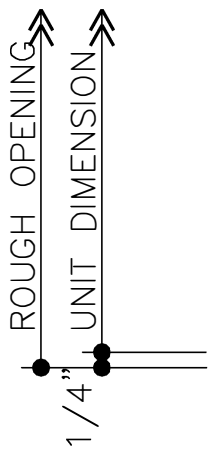
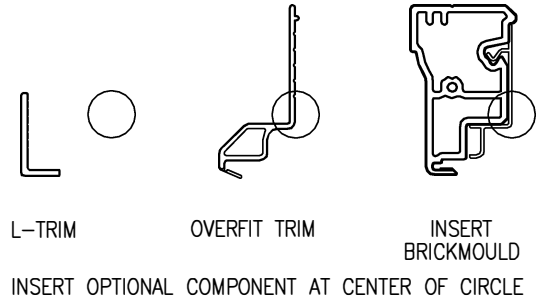
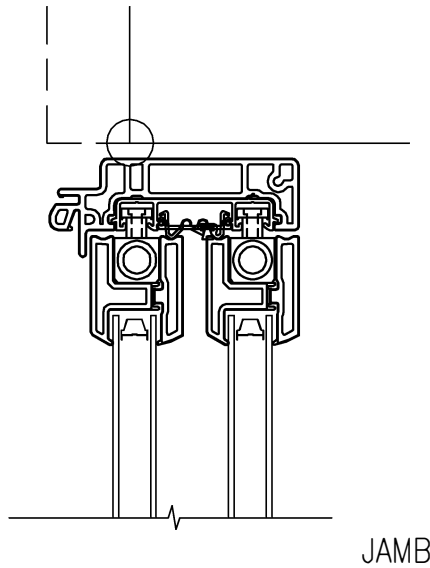
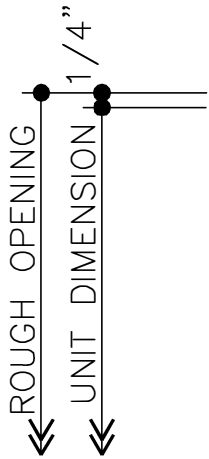
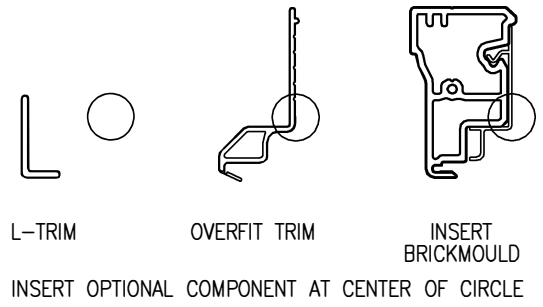
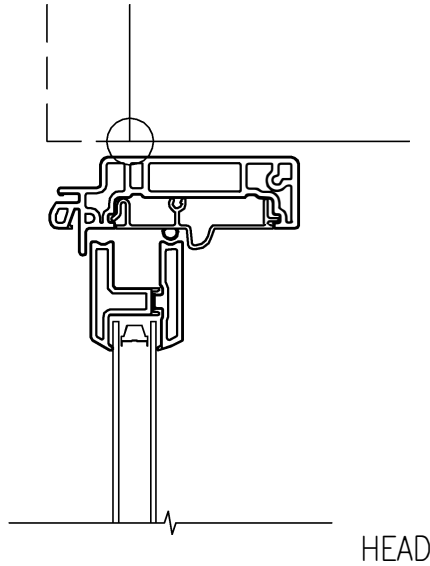
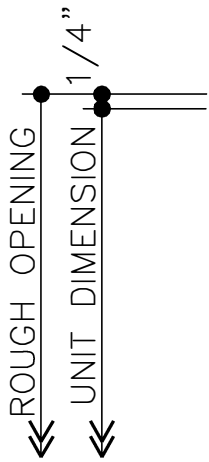
INCREMENTS TO 1/16"

WIDTH AND HEIGHT CANNOT BOTH BE IN THE MAXIMUM RANGE FOR ANY WINDOW.



RENEWAL BY ANDERSEN®
SLOPED SILL INSERT DOUBLE-HUNG EQUAL SASH

CONTACT YOUR LOCAL RENEWAL BY ANDERSEN DEALER FOR GRILLE OPTIONS AND PATTERNS



RENEWAL BY ANDERSEN®
SLOPE SILL INSERT DOUBLE-HUNG WINDOW DETAILS



FRONT OF HOME
CLOSE-UP VIEW OF 2 WINDOWS PROPOSED FOR REPLACEMENT



1615 GREEN ST., APT. B
2 WINDOWS PROPOSED FOR IN-KIND
REPLACEMENT MARKED IN RED



1615 GREEN STREET AND NEIGHBORS ON LEFT & RIGHT

NEIGHBORS ACROSS FROM 1615 GREEN ST.

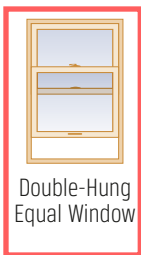


Double-Hung WINDOWS

This classic window style is an excellent choice no matter where you live. Choose gently curved Contemporary or squared Traditional Check Rails.

CONVENIENT

Both top and bottom sash tilt in for easy cleaning.



Double-Hung Equal Window



Double-Hung Cottage Style Window



Double-Hung Reverse Cottage Style Window



Combination Window

EXPRESS YOUR STYLE

Check Rail Options



Contemporary



Traditional

ACCURATE

Fits perfectly in many restoration and renovation projects.

ELEGANT

The traditional look of mortise-and-tenon joints complements any decor.

Reverse cottage style windows feature a larger upper sash



“My new windows look beautiful and can be opened from the bottom or top.”
CAROL P.

Double-Hung Windows / White Interior



Double-Hung Windows / White Interior / Colonial Grilles



Double-Hung Reverse Cottage Style Windows
Maple Interior / Modified Prairie Grilles



Double-Hung Windows / White Interior



Double-Hung Cottage Style and Picture Combination Window / White Interior / Colonial Grilles



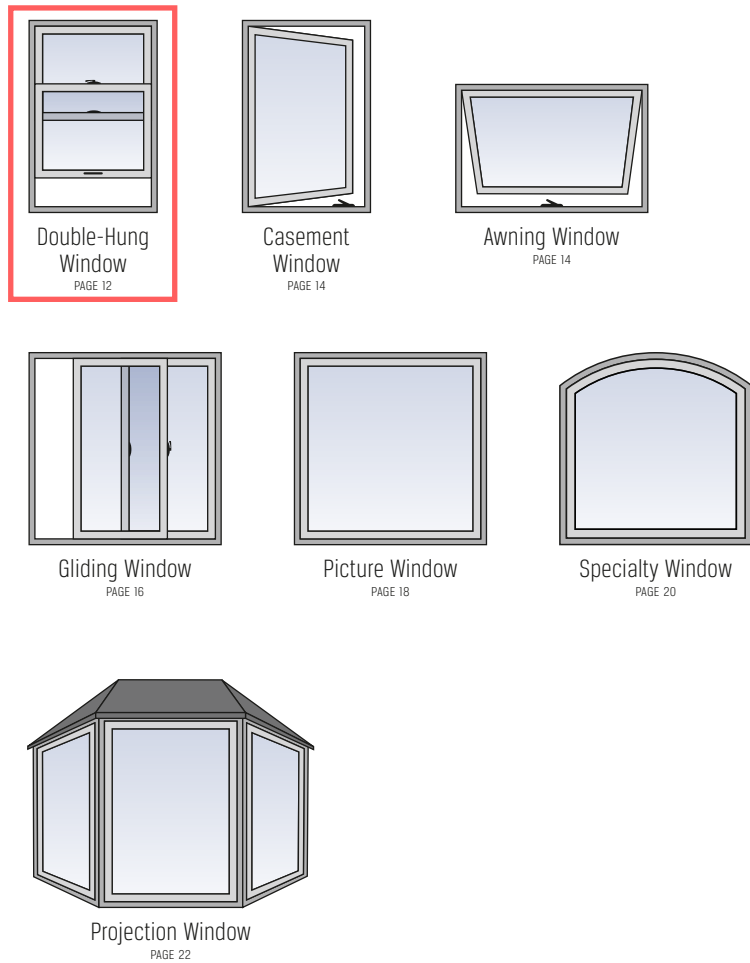
Double-Hung Windows / White Exterior / Colonial Grilles

Choosing Renewal by Andersen® Windows is Easy...

We make it easy so you can sit back and relax, knowing you've selected a professional start-to-finish window replacement company.

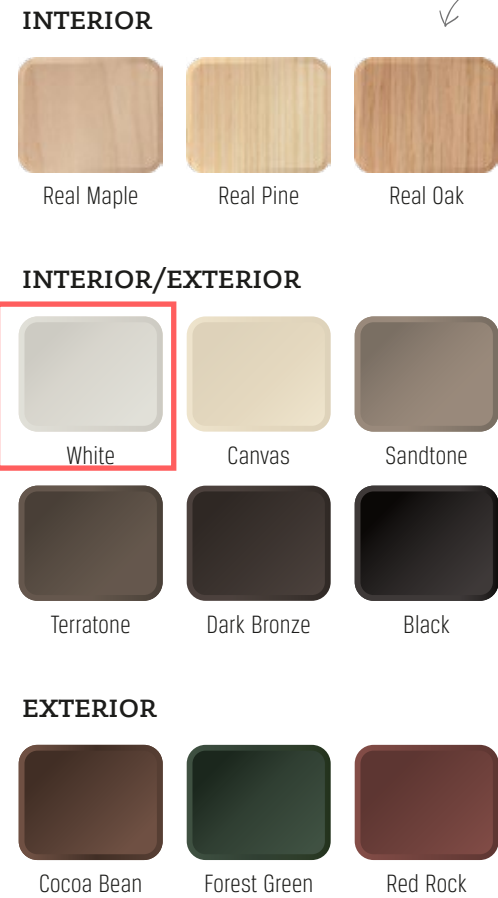
The Renewal by Andersen process starts with our consultative sales approach. Our experienced sales representatives will work with you to find solutions to enhance your home's functionality, energy efficiency, and beauty.

1 Select Window Styles



2 Select Colors³

Real wood interior veneers can be stained or painted to match your decor



3 Select Hardware and Options



Visit Us Online at RENEWALBYANDERSEN.COM

See independent homeowner reviews and completed projects from your neighborhood.

Explore how new windows will look in your home.

Get ideas and be inspired by our window options.

Five Key Environmental and Energy Solutions

While we care about you and your home, we also care deeply for the world in which we all live.

- Renewing Existing Housing
- Smart Use of Energy
- Long Product Lifecycle
- Smart Use of Materials
- Safer Indoor Air Quality

MORE SUSTAINABLE WINDOW REPLACEMENT

See our Environmental and Energy Solutions Brochure for additional information.

Grille OPTIONS

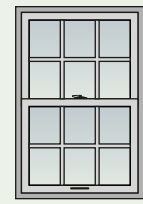
Whether it's for historical accuracy or creating an eye-catching new look, window grilles create instant curb appeal.

Customize Your Windows

Renewal by Andersen offers a wide range of creative grille patterns to enhance the look of your home.

All of our grilles are designed to be long lasting¹ with low-maintenance performance. With such a broad range of high-profile grille options, you can match your home's current architecture, change the look and style of your home, or incorporate them into a renovation project for historical accuracy.

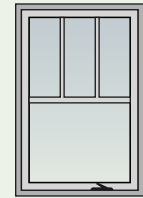
Patterns



Colonial

Specified number of squares per sash.

Double-hung window shown



Farmhouse

Two vertical bars meet a wider horizontal rail or bar at the center of the window.

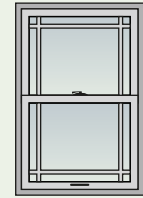
Casement window shown



Prairie

Two vertical and two horizontal bars per sash to form 4-inch corner squares.

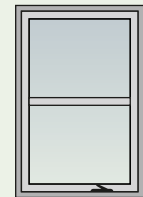
Double-hung window shown



Modified Prairie

Two vertical bars and one horizontal bar per sash.

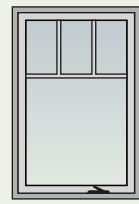
Double-hung window shown



Simulated Double-Hung

Preserve the look of a traditional window.

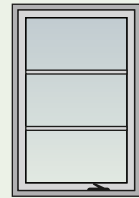
Casement window shown



Fractional

Specified number of vertical bars meet a horizontal bar.

Casement window shown



Equal Light

Specified number of horizontal bars, equal distance apart.

Casement window shown



Custom

Create a new pattern or revive one from the past.

Casement window shown

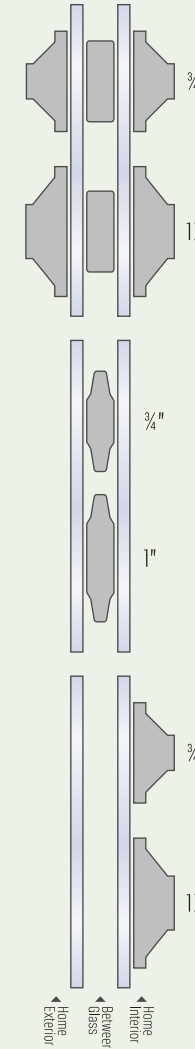


More

Ask your design consultant for more grille options.

Picture window shown

Profiles



Full Divided Light Grilles

Full divided light grilles provide a visual representation of true divided glass. The option consists of a permanently applied exterior Fibrex® material grille, an aluminum spacer between the glass, and a removable or permanently applied interior grille. Available in two widths and an array of colors.

Grilles Between-the-Glass

Aluminum grilles are permanently installed between the panes during manufacturing, providing the beauty of grilles with the quick cleaning of a smooth glass surface. Available in two widths and an array of colors.

Interior Wood Grilles

Made of hardwood, these grilles snap into clips on the interior of the sash and can be easily removed to make glass cleaning a breeze. Available in two widths.



Picture Windows / Pine Interior / Colonial Grilles



Double-Hung and Casement Windows / White Exterior / Colonial Grilles



Casement Window / White Interior / Prairie Grilles



Double-Hung Window
Black Exterior / Custom Grilles

Insect Screen OPTIONS

Even when it comes to insect screens, you can let your personal style guide you.

Repel Invaders

Fiberglass insect screens are included with every operable window from Renewal by Andersen. Each is lightweight and designed to be easily removed from the inside of your home for easy cleaning. All insect screens are constructed with an aluminum frame and your choice of fiberglass, aluminum, or our innovative TruScene insect screens. Half insect screens are available on double-hung windows.



High Transparency



TruScene® Insect Screen

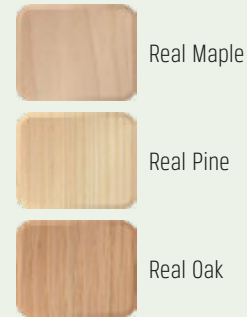
With over 50% more clarity than our standard insect screen,⁹ it's virtually invisible. TruScene insect screens are made with a micro-fine stainless steel mesh that's one-third the diameter of standard screen wire.⁹ That lets more fresh air and sunlight in while keeping most of the smallest insects out.

- Lets more light in
- Superior ventilation
- Protection against some of the smallest insects
- Patented technology



Wood-Veneered TruScene Insect Screen

Our wood-veneered TruScene insect screen blends seamlessly into the window frame and can be stained or painted to match your decor. Available on casement and awning windows only.



TruScene® Insect Screen



TruScene insect screens are like nothing you've ever seen!



Conventional

Fiberglass Insect Screen

Fiberglass is the most common type of insect screen. It is strong and keeps the majority of bugs out while allowing plenty of air flow.



Aluminum Insect Screen

Our aluminum insect screen has a charcoal powder coating to reduce glare and increase visibility. It is also strong and has good ventilation and corrosion resistance.



Hardware Finish OPTIONS

Sophistication...a whisper of style and confidence.

Define Your Style

Not only does Renewal by Andersen® hardware function well, its metal construction is also long lasting.¹ With multiple color options,³ you can match your home's existing colors or change the look by choosing a new color that complements your new windows.

With so many design options, you can create the windows you've always wanted with the design features that are right for you and your home.

Do you want to make your mark? With our Estate Hardware metal finishes, explore the many creative possibilities sure to add charm to your home that others will notice!

Andersen EXCLUSIVE FEATURE Estate™ Hardware



Polished Chrome, Brushed Chrome, Satin Nickel¹⁰, Distressed Nickel



Bright Brass¹⁰, Antique Brass¹⁰, Distressed Bronze¹¹, Oil Rubbed Bronze¹¹

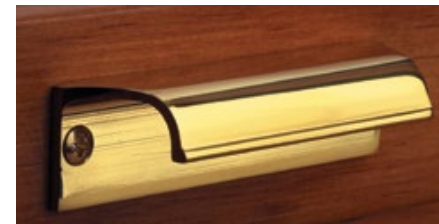


Standard Hardware



White, Canvas, Stone, Dark Bronze, Black

Nesting handles reduce interference with window treatments



Estate Double-Hung Hand Lift / Bright Brass Finish



Estate Casement and Awning Window Handle / Antique Brass Finish



Estate Double-Hung Finger Lift / Bright Brass Finish



Estate Double-Hung Window Latch / Satin Nickel Finish



Double-Hung Window Latch / White Finish



Estate Casement Window Latch / Antique Brass Finish



Estate Gliding Window Latch / Distressed Nickel Finish

Feel Confident Entrusting Your Home to the Masters



We work with the best people across the board. Rigorously trained, respectful, and friendly, you'll see why we're proud to call them Certified Master Installers.



A QUALITY EXPERIENCE IS IN THE DETAILS

We've long understood that all the care, pride, and craftsmanship we put into our products would mean little without professional installation. It's from these standards that we created our Certified Master Installer program.



WE TAKE A UNIQUE APPROACH

Not only do we provide a quality, professional process from start to finish, our Certified Master Installer program takes this to the next level by placing your new windows and patio doors in the hands of skilled Master Installers with years of experience.



OUR STANDARDS ARE TOUGH

Prior to certification, we require all trainers and installers at our certified locations to demonstrate their knowledge of construction materials, building codes, and installation methods. We understand you work hard for your home, and we want you to be as comfortable as possible throughout the installation process.



ONLY THE BEST PEOPLE MAKE THE CUT

We take pride in setting the highest standards in the market, with no stone left unturned. This includes the men and women installing your windows. We're proud to put our name in their hands.



Thanks to meticulous training, extensive supervision, and high expectations, our Certified Master Installers are without a doubt the best team for the job – the team we trust to handle the windows built just for you.



What are Renewal by Andersen® windows made of?

All of our windows are made of Fibrex® material, a revolutionary composite made from reclaimed wood fiber blended with a polymer. This gives our windows the strength and durability of wood and the low-maintenance features of vinyl, while greatly limiting thermal transmittance that can be found in other window materials such as metal.

Unlike many other window materials, Fibrex composite material won't flake, rust, blister, peel, crack, pit, or corrode.¹ It is also two times stronger than vinyl and resists warping and bowing. Never worry about scraping or painting your windows again.

ENGINEERED WITH
FIBREX®
MATERIAL

Andersen
EXCLUSIVE
FEATURE

SMART MATERIALS

Fibrex material is twice as strong as vinyl, so weathertight seals stay weathertight.

COLOR CHOICE

Our unique process fuses color to Fibrex material for long-lasting beauty. And it offers dark exterior colors not available on most other replacement windows.

EXCEPTIONAL COMFORT

Fibrex material blocks thermal transfer nearly 700 times better than aluminum to help reduce heating and cooling bills.

OUTSTANDING DURABILITY

Fibrex material retains its stability and rigidity in all climates!

	FIBREX MATERIAL	VINYL	ALUMINUM	WOOD
Insulating Properties	✓	✓		✓
Low Maintenance	✓	✓	✓	
Resistance to Decay/Corrosion	✓	✓		
Structural Rigidity	✓		✓	✓
Durability	✓		✓	✓
Color Choices	✓			✓
Dark Color Performance	✓		✓	✓



CERTIFICATE OF LIABILITY INSURANCE

DATE (MM/DD/YYYY)

2/5/2024

THIS CERTIFICATE IS ISSUED AS A MATTER OF INFORMATION ONLY AND CONFERS NO RIGHTS UPON THE CERTIFICATE HOLDER. THIS CERTIFICATE DOES NOT AFFIRMATIVELY OR NEGATIVELY AMEND, EXTEND OR ALTER THE COVERAGE AFFORDED BY THE POLICIES BELOW. THIS CERTIFICATE OF INSURANCE DOES NOT CONSTITUTE A CONTRACT BETWEEN THE ISSUING INSURER(S), AUTHORIZED REPRESENTATIVE OR PRODUCER, AND THE CERTIFICATE HOLDER.

IMPORTANT: If the certificate holder is an ADDITIONAL INSURED, the policy(ies) must have ADDITIONAL INSURED provisions or be endorsed. If SUBROGATION IS WAIVED, subject to the terms and conditions of the policy, certain policies may require an endorsement. A statement on this certificate does not confer rights to the certificate holder in lieu of such endorsement(s).

PRODUCER Cross Insurance, Inc. - RI 376 Newport Avenue P. O. Box 4830 E. Providence RI 02916	CONTACT NAME: Kim Perry PHONE (A/C. No. Ext): 401-431-9200 E-MAIL ADDRESS: Kim.Perry@crossagency.com	FAX (A/C. No.): 401-431-9201
	INSURER(S) AFFORDING COVERAGE	
INSURED J&M Windows, Inc. dba Renewal by Andersen of Greater Philadelphia 761 5th Ave #3 King of Prussia PA 19406	476729	INSURER A : Acadia Ins Co.
		INSURER B :
		INSURER C :
		INSURER D :
		INSURER E :
		INSURER F :

COVERAGES

CERTIFICATE NUMBER: 750373159

REVISION NUMBER:

THIS IS TO CERTIFY THAT THE POLICIES OF INSURANCE LISTED BELOW HAVE BEEN ISSUED TO THE INSURED NAMED ABOVE FOR THE POLICY PERIOD INDICATED. NOTWITHSTANDING ANY REQUIREMENT, TERM OR CONDITION OF ANY CONTRACT OR OTHER DOCUMENT WITH RESPECT TO WHICH THIS CERTIFICATE MAY BE ISSUED OR MAY PERTAIN, THE INSURANCE AFFORDED BY THE POLICIES DESCRIBED HEREIN IS SUBJECT TO ALL THE TERMS, EXCLUSIONS AND CONDITIONS OF SUCH POLICIES. LIMITS SHOWN MAY HAVE BEEN REDUCED BY PAID CLAIMS.

INSR LTR	TYPE OF INSURANCE	ADDL INSD	SUBR WVD	POLICY NUMBER	POLICY EFF (MM/DD/YYYY)	POLICY EXP (MM/DD/YYYY)	LIMITS
A	<input checked="" type="checkbox"/> COMMERCIAL GENERAL LIABILITY <input type="checkbox"/> CLAIMS-MADE <input checked="" type="checkbox"/> OCCUR GEN'L AGGREGATE LIMIT APPLIES PER: <input type="checkbox"/> POLICY <input checked="" type="checkbox"/> PRO-JECT <input type="checkbox"/> LOC <input type="checkbox"/> OTHER:			CPA5534384	1/1/2024	1/1/2025	EACH OCCURRENCE \$ 1,000,000 DAMAGE TO RENTED PREMISES (Ea occurrence) \$ 300,000 MED EXP (Any one person) \$ 10,000 PERSONAL & ADV INJURY \$ 1,000,000 GENERAL AGGREGATE \$ 2,000,000 PRODUCTS - COMP/OP AGG \$ 2,000,000 \$
A	<input checked="" type="checkbox"/> AUTOMOBILE LIABILITY <input checked="" type="checkbox"/> ANY AUTO <input type="checkbox"/> OWNED AUTOS ONLY <input type="checkbox"/> SCHEDULED AUTOS <input type="checkbox"/> HIRED AUTOS ONLY <input type="checkbox"/> NON-OWNED AUTOS ONLY			CAA5534385	1/1/2024	1/1/2025	COMBINED SINGLE LIMIT (Ea accident) \$ 1,000,000 BODILY INJURY (Per person) \$ BODILY INJURY (Per accident) \$ PROPERTY DAMAGE (Per accident) \$ \$
A	<input checked="" type="checkbox"/> UMBRELLA LIAB <input type="checkbox"/> OCCUR <input type="checkbox"/> EXCESS LIAB <input type="checkbox"/> CLAIMS-MADE DED RETENTION \$			CUA5534402	1/1/2024	1/1/2025	EACH OCCURRENCE \$ 10,000,000 AGGREGATE \$ 10,000,000 \$
A	WORKERS COMPENSATION AND EMPLOYERS' LIABILITY ANY PROPRIETOR/PARTNER/EXECUTIVE OFFICER/MEMBER EXCLUDED? (Mandatory in NH) If yes, describe under DESCRIPTION OF OPERATIONS below	Y/N	N/A	WCA5534403	1/1/2024	1/1/2025	<input checked="" type="checkbox"/> PER STATUTE <input type="checkbox"/> OTHER E.L. EACH ACCIDENT \$ 1,000,000 E.L. DISEASE - EA EMPLOYEE \$ 1,000,000 E.L. DISEASE - POLICY LIMIT \$ 1,000,000

DESCRIPTION OF OPERATIONS / LOCATIONS / VEHICLES (ACORD 101, Additional Remarks Schedule, may be attached if more space is required)

CERTIFICATE HOLDER**CANCELLATION**

Evidence of Insurance

SHOULD ANY OF THE ABOVE DESCRIBED POLICIES BE CANCELLED BEFORE THE EXPIRATION DATE THEREOF, NOTICE WILL BE DELIVERED IN ACCORDANCE WITH THE POLICY PROVISIONS.

AUTHORIZED REPRESENTATIVE

© 1988-2015 ACORD CORPORATION. All rights reserved.



City of Philadelphia
Department of
Licenses & Inspections
P.O. Box 53310
Philadelphia, Pa. 19105

DISPLAY PROMINENTLY
if required by law

J & M WINDOWS INC
761 5TH AVENUE
SUITE 3
KING OF PRUSSIA, PA 19406
USA

3527 Contractor

J & M WINDOWS INC

THIS LICENSE IS GRANTED TO THE PERSON OR COMPANY FOR THE PURPOSE STATED ABOVE. IT IS SUBJECT TO IMMEDIATE CANCELLATION BY THIS DEPARTMENT FOR VIOLATIONS OF CITY ORDINANCES AND REGULATIONS.

LICENSE CODE	LICENSE NO.	COMMERCIAL ACTIVITY LIC.	EXPIRES ON	ISSUED ON
3527	37492	480754	3/30/2024	3/7/2023

LIMITS & CONDITIONS:

1. Contractors and subcontractors (including individuals and business entities) must have valid licenses. All subcontractors working under a permit must be submitted to the Department.
2. Contractors cannot sell or transfer their license or permit to another person.
3. Contractors must provide accurate information on any license or permit application with the Department.
4. Contractors must get all required permits for construction work and comply with approved permit documents.
5. Contractors must maintain information at each job site as required by the Philadelphia Code.
6. Contractors must display their Contractor License number on any advertisements, stationery, places of business, job sites, proposals, and vehicles displaying the business name.
7. Contractors must maintain complete financial and construction records (including plans) for each job performed for four years after completion of the job.
8. Contractors must follow all provisions of The Philadelphia Code.

LICENSE