

SHOP DRAWING/SUBMITTAL REVIEW

- Reviewed
- Reviewed w/ Changes as Noted
- Revise & Resubmit
- Rejected _____

This is an original, unpublished drawing by **Nova Industrial Arts**. It is submitted for your exclusive use, in connection with a project being planned/executed. It is not to be shown to or utilized by anyone outside of your organization. It may not be reproduced, copied or utilized except for the specific project for which they were created, without written consent from **Nova Industrial Arts**. This drawing and contained concepts are the sole property of **Nova Industrial Arts**.

By: _____ Date: _____

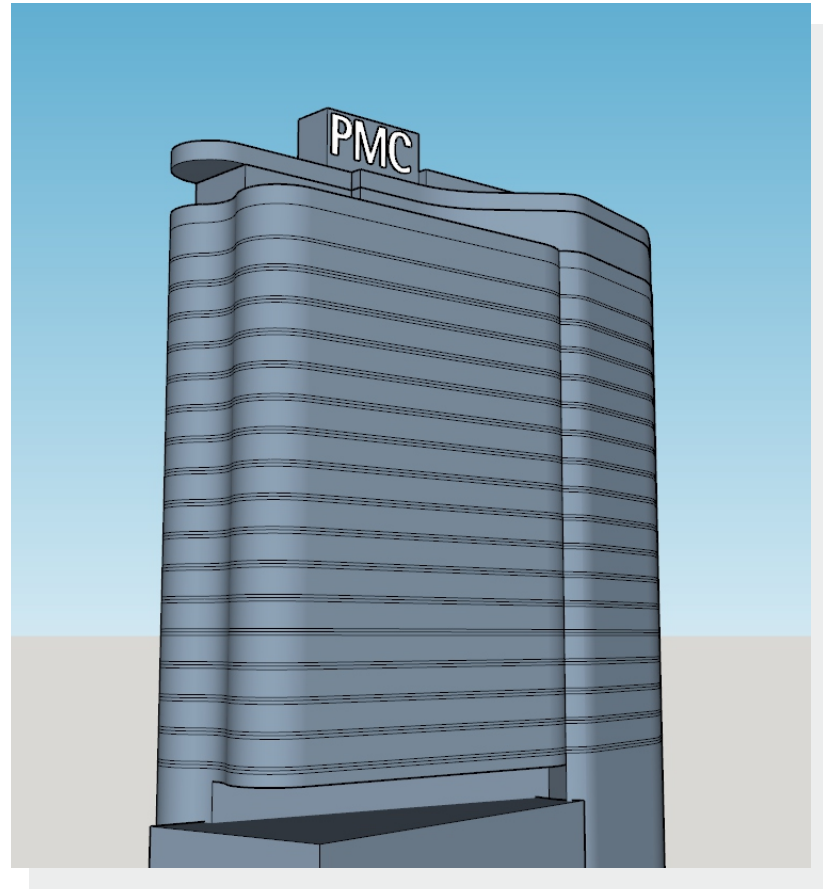


Project #: 24029
Client: PMC Property Group
Location: Philadelphia, PA

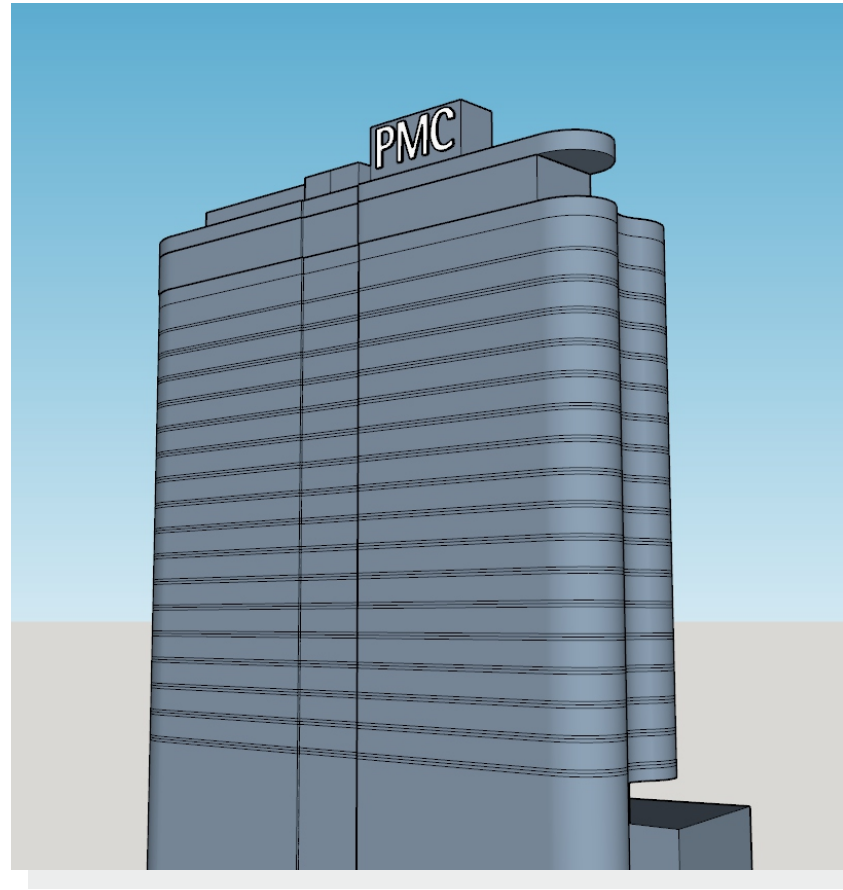


Design Intent Submittal - Rev3

07.17.24



1 South Elevation - JFK Boulevard
Scale: NTS



2 North Elevation - SEPTA Rail
Scale: NTS



3 West Elevation - Schuylkill River
Scale: NTS



3 Compass Road
Mount Holly, NJ 08060
856.767.3520
www.novaindustrialarts.com

PROJECT INFORMATION NOVA CONTACT DRAWING DATES APPROVALS

CLIENT **PMC Property Group**
JOB NAME **PMC Hi-Rise Letteset**
JOB LOCATION **2901 JFK Boulevard
Philadelphia, PA**

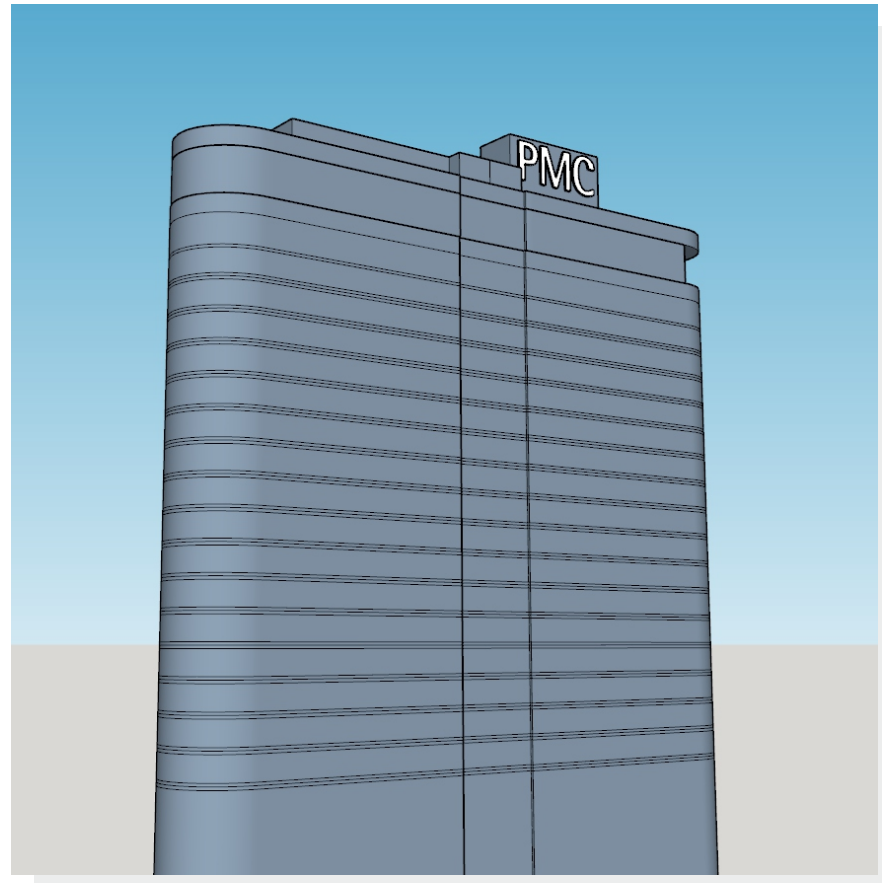
SALES REP **C. Kennedy**
PROJECT MANAGER **M. Simiriglia**
DESIGNER **B. Askew**

INITIAL DRAWING **04.26.24**
REVISION **4** **07.18.24** BY **BMA**
2 **07.02.24** **BMA**
3 **07.17.24** **BMA**

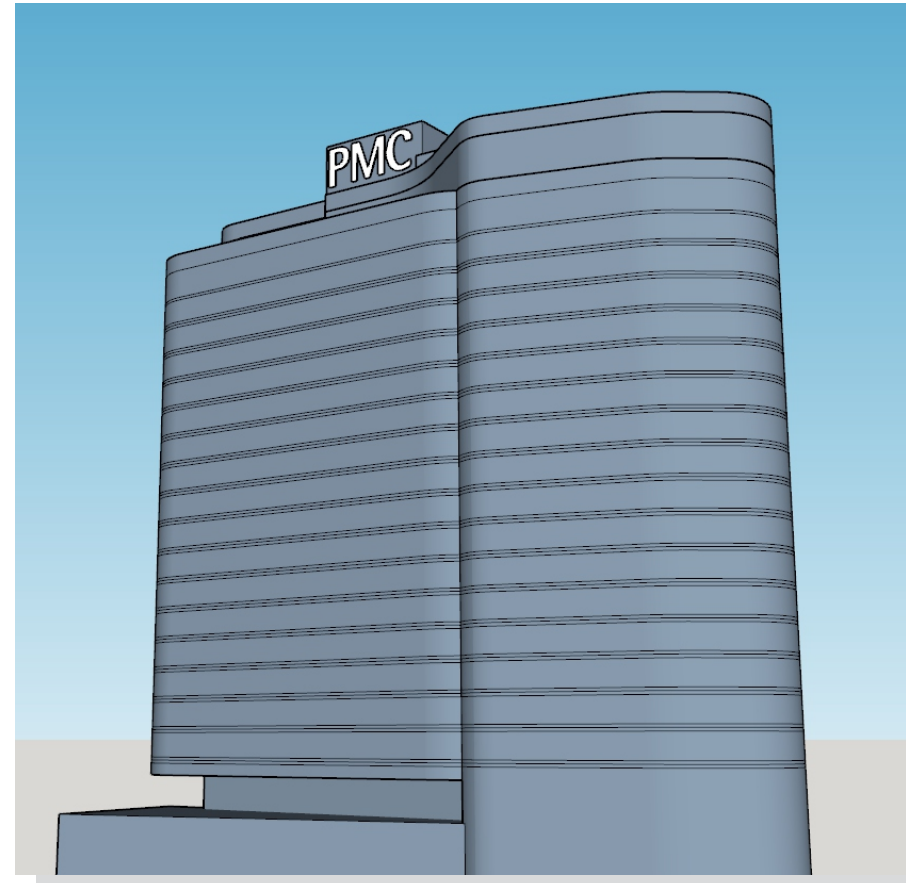
Approved Approved as Noted Revise & Resubmit
NAME _____
DATE _____
NOTE _____



PROJECT NUMBER **24029**
SHEET NUMBER **0.1**



1 North Elevation - SEPTA Rail
Scale: NTS



2 South Elevation - JFK Boulevard
Scale: NTS



3 East Elevation
Scale: NTS



3 Compass Road
Mount Holly, NJ 08060
856.767.3520
www.novaindustrialarts.com

PROJECT INFORMATION

CLIENT **PMC Property Group**
JOB NAME **PMC Hi-Rise Letteset**
JOB LOCATION **2901 JFK Boulevard
Philadelphia, PA**

NOVA CONTACT

SALES REP **C. Kennedy**
PROJECT MANAGER **M. Simiriglia**
DESIGNER **B. Askew**

DRAWING DATES

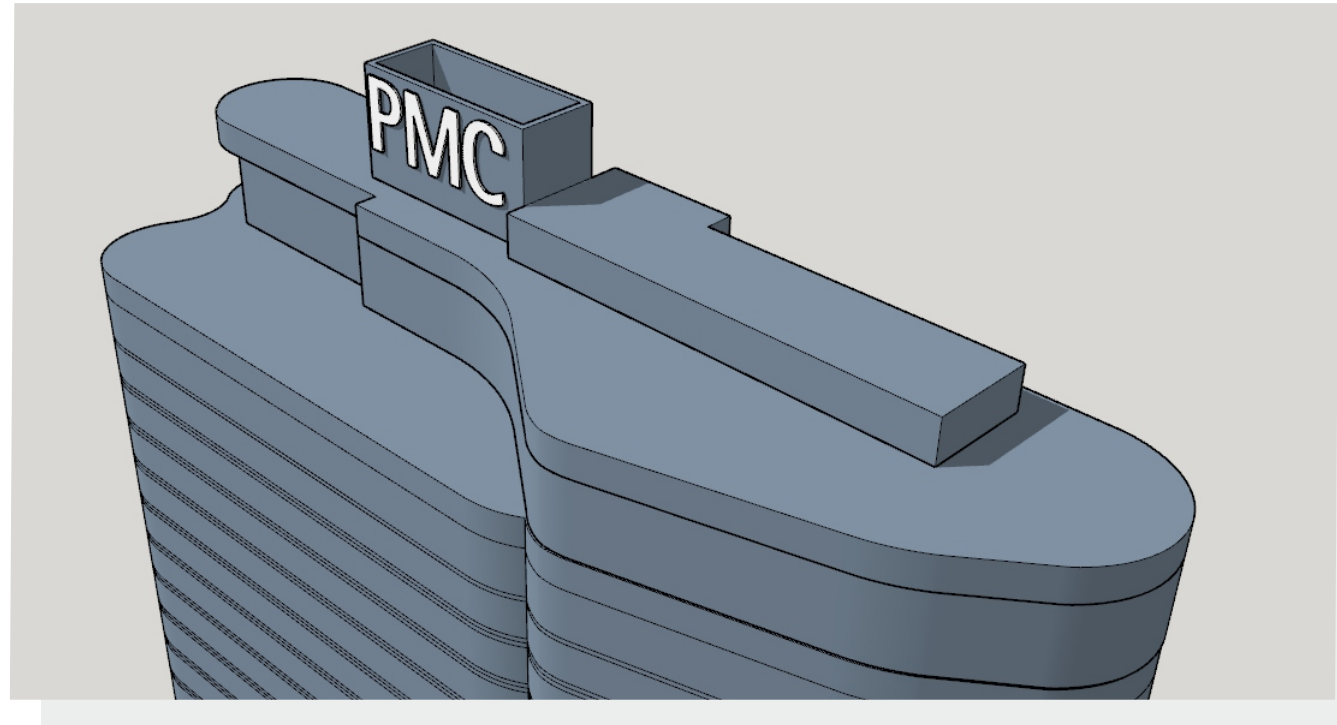
INITIAL DRAWING **04.26.24**
REVISION **4** **07.18.24** BY **BMA**
2 **07.02.24** **BMA**
3 **07.17.24** **BMA**

APPROVALS

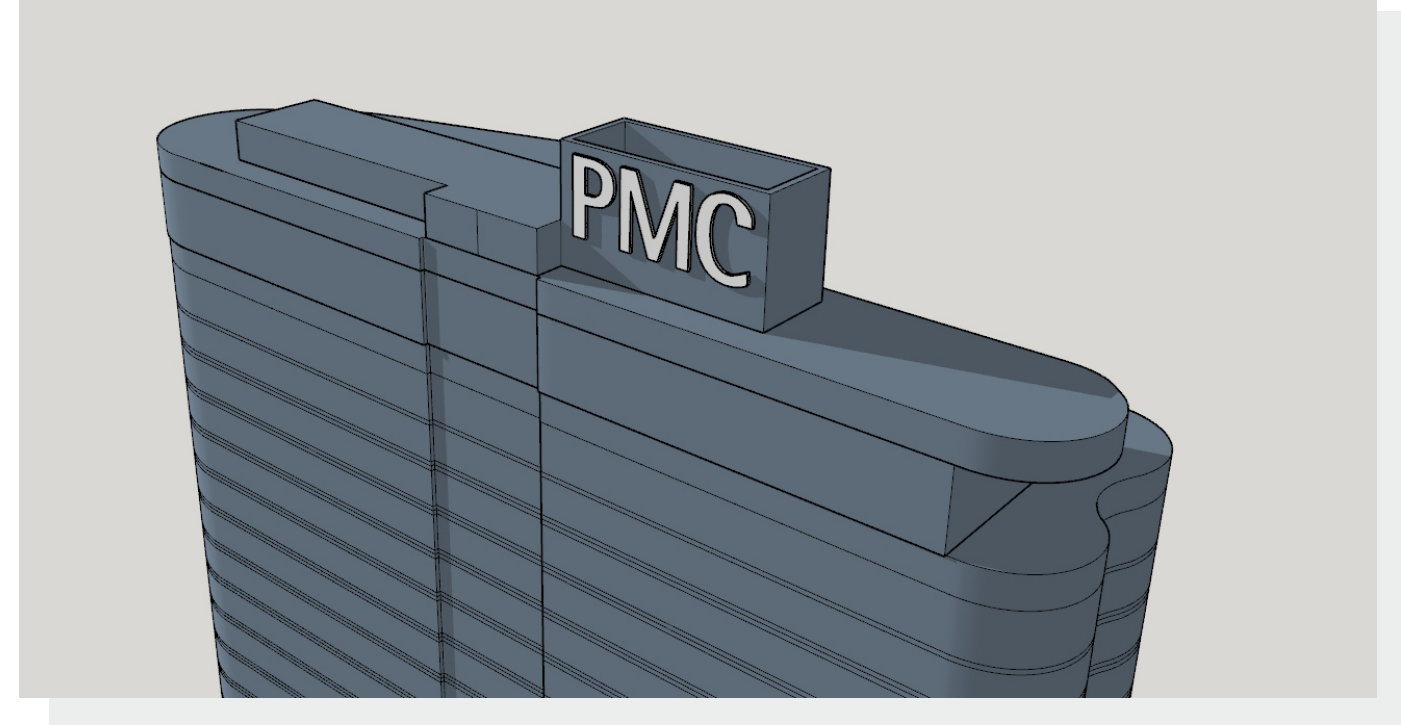
Approved Approved as Noted Revise & Resubmit
NAME _____
DATE _____
NOTE _____



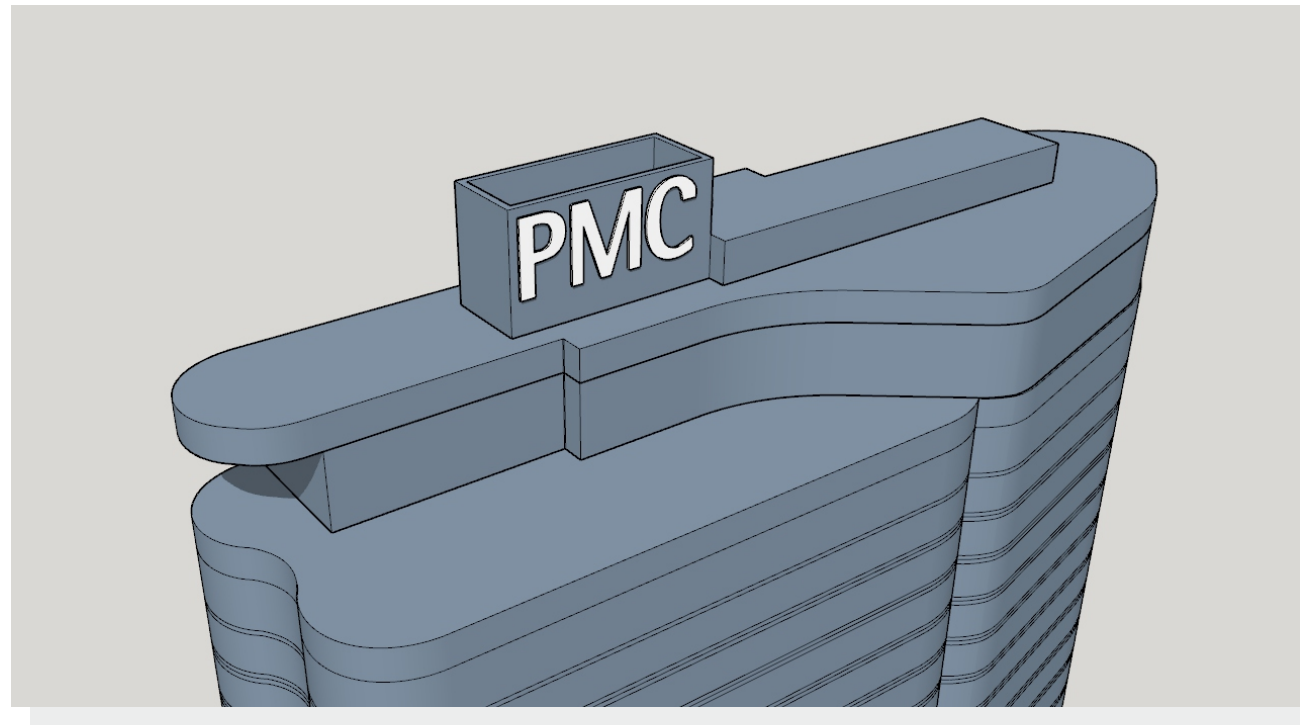
PROJECT NUMBER **24029**
SHEET NUMBER **0.2**



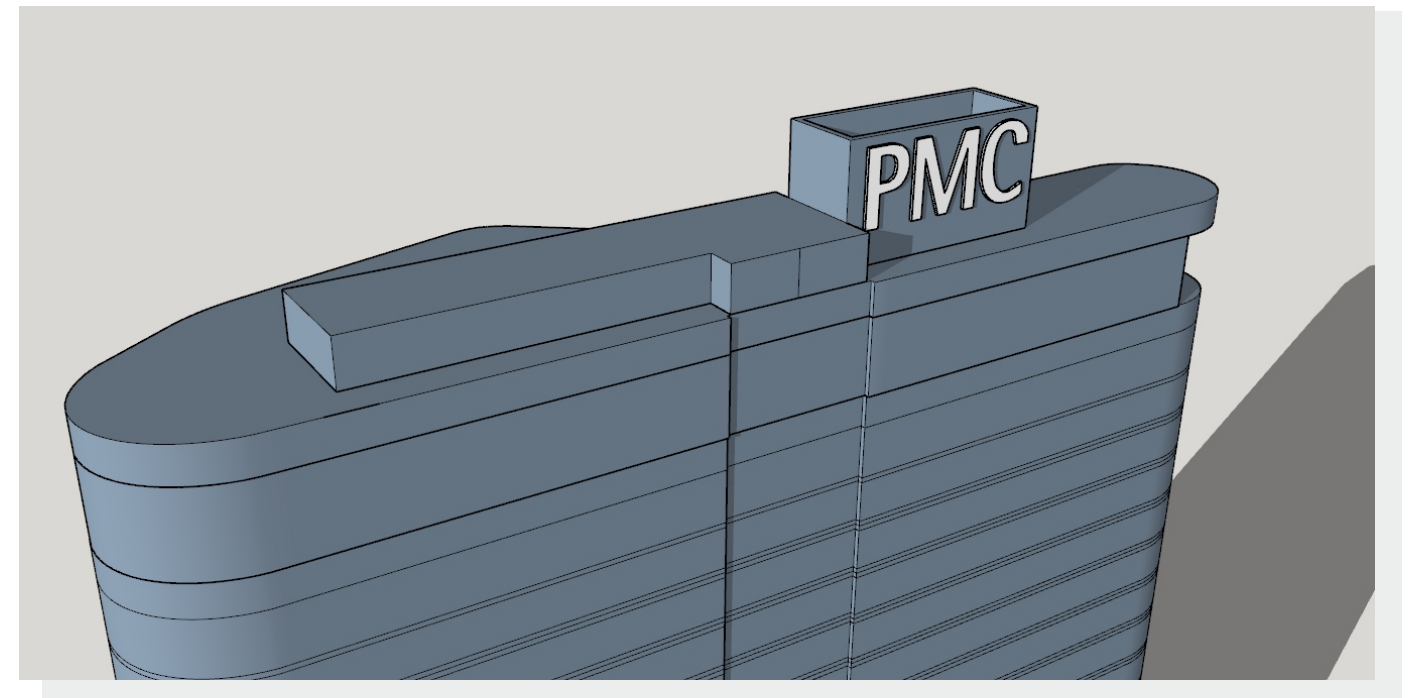
1 South Elevation - JFK BLVD
Scale: NTS



2 North Elevation - SEPTA Rail
Scale: NTS



3 South Elevation - JFK BLVD
Scale: NTS



4 North Elevation - SEPTA Rail
Scale: NTS



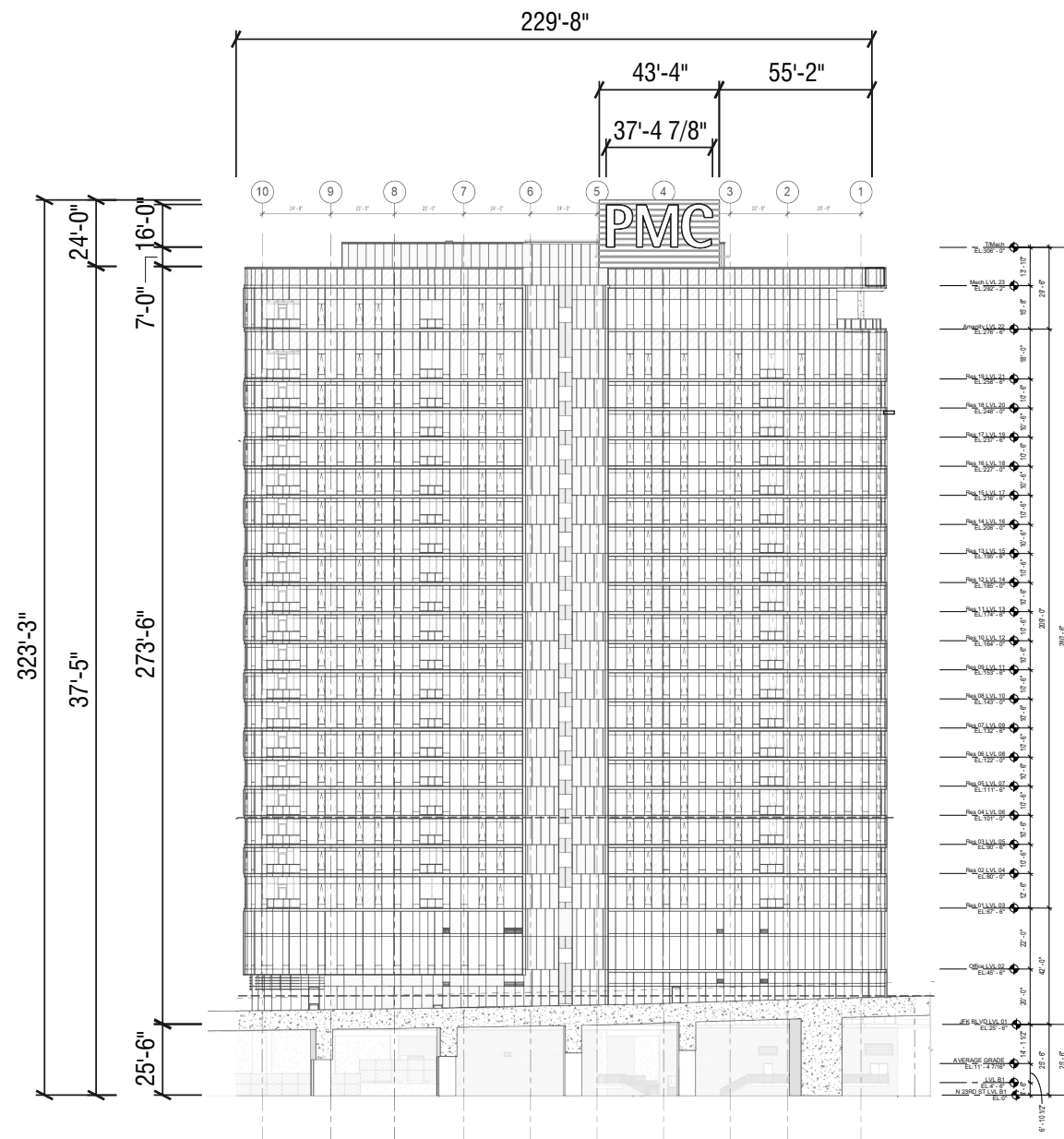
3 Compass Road
Mount Holly, NJ 08060
856.767.3520
www.novaindustrialarts.com

PROJECT INFORMATION **NOVA CONTACT** **DRAWING DATES** **APPROVALS**

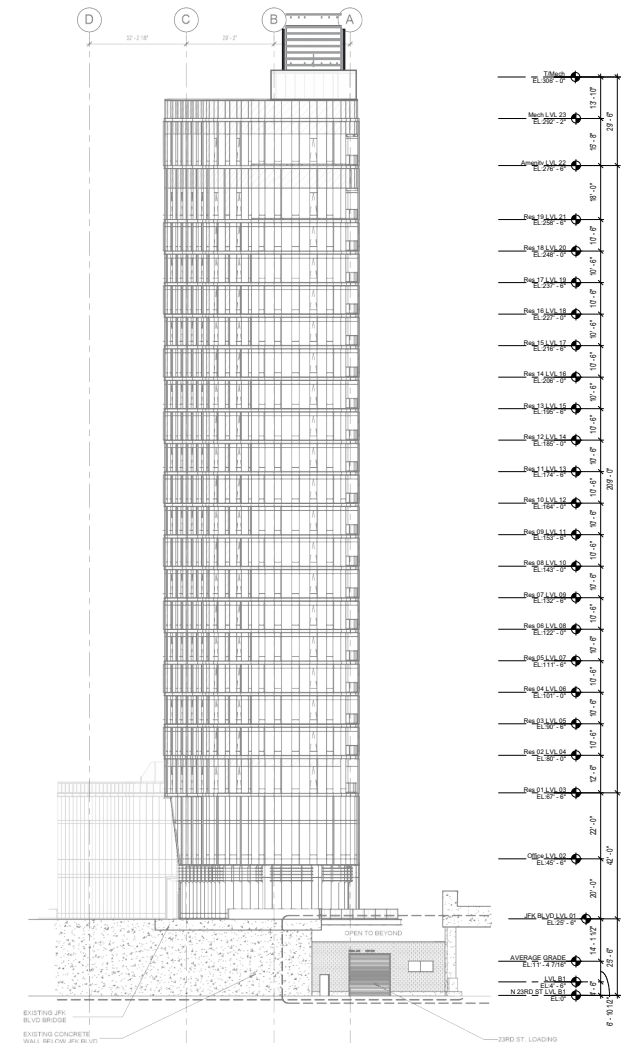
CLIENT	PMC Property Group	SALES REP	C. Kennedy	INITIAL DRAWING	04.26.24	<input type="checkbox"/> Approved	<input type="checkbox"/> Approved as Noted	<input type="checkbox"/> Revise & Resubmit
JOB NAME	PMC Hi-Rise Letteset	PROJECT MANAGER	M. Simiriglia	REVISION	4 07.18.24 BY BMA	NAME		
JOB LOCATION	2901 JFK Boulevard				2 07.02.24 BMA	DATE		
	Philadelphia, PA	DESIGNER	B. Askew		3 07.17.24 BMA	NOTE		



PROJECT NUMBER **24029**
SHEET NUMBER **0.3**



1 North Building Elevation - Sign 1 - (SEPTA Rail)
Scale: 1/64" = 1'-0"



2 East Building Elevation
Scale: 1/64" = 1'-0"

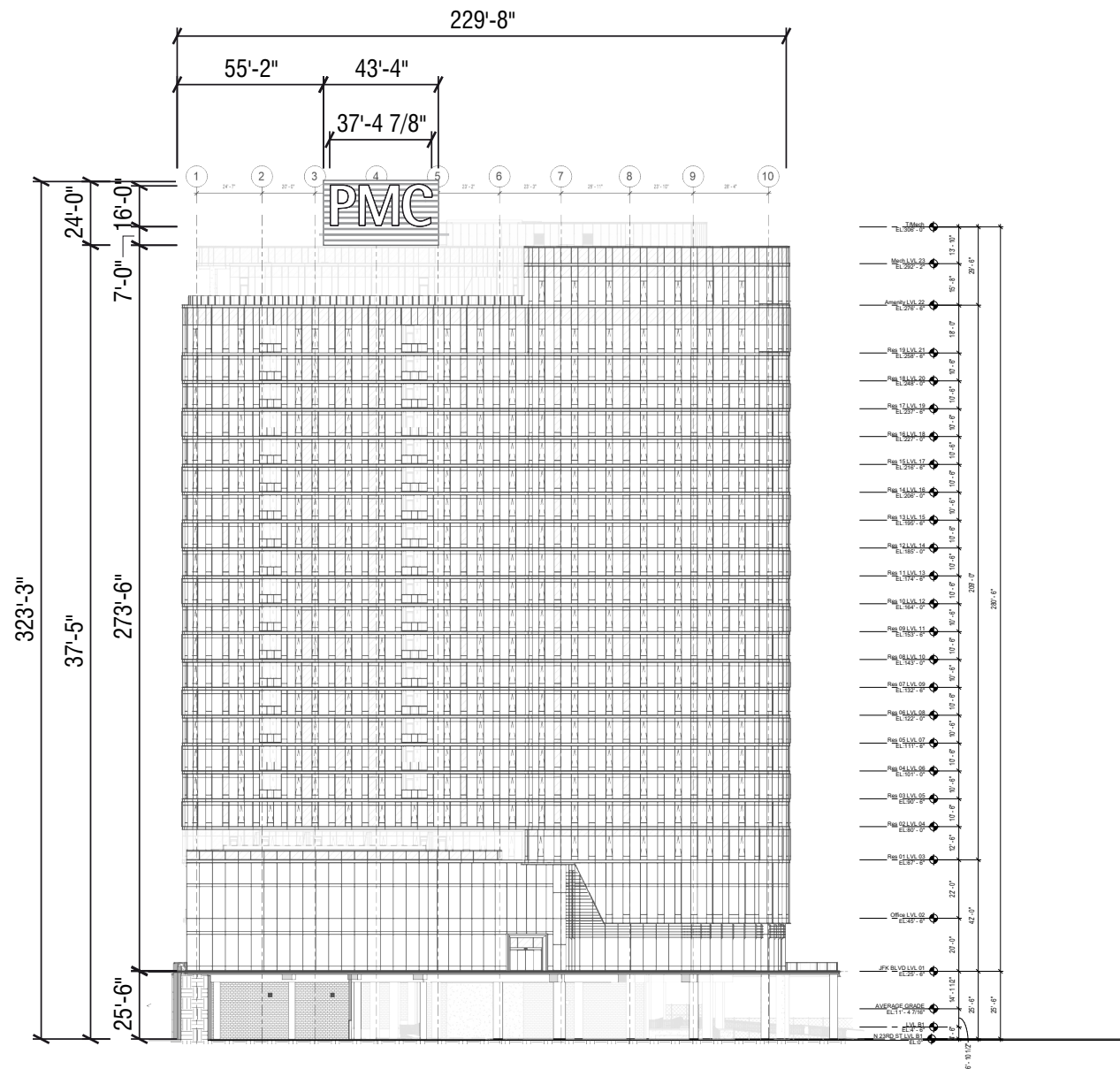


3 Compass Road
Mount Holly, NJ 08060
856.767.3520
www.novaindustrialarts.com

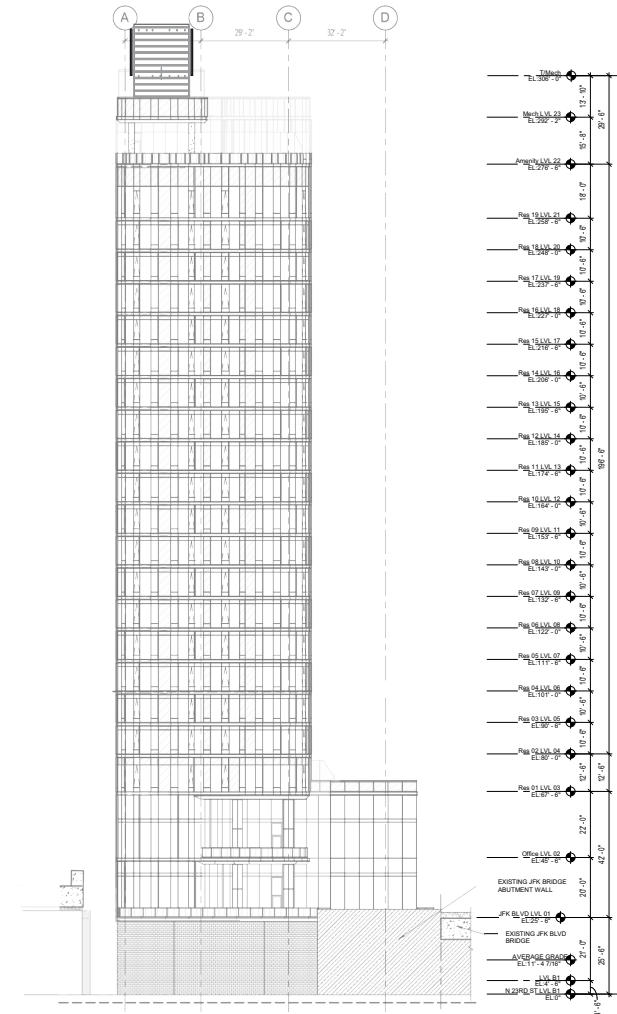
PROJECT INFORMATION		NOVA CONTACT		DRAWING DATES		APPROVALS	
CLIENT	PMC Property Group	SALES REP	C. Kennedy	INITIAL DRAWING	04.26.24	<input type="checkbox"/> Approved <input type="checkbox"/> Approved as Noted <input type="checkbox"/> Revise & Resubmit	
JOB NAME	PMC Hi-Rise Letteset	PROJECT MANAGER	M. Simiriglia	REVISION	▲ 07.18.24 BY BMA	NAME	
JOB LOCATION	2901 JFK Boulevard	DESIGNER	B. Askew		▲ 07.02.24 BMA	DATE	
	Philadelphia, PA				▲ 07.17.24 BMA	NOTE	



PROJECT NUMBER 24029
SHEET NUMBER 2.0



1 South Building Elevation - Sign 2 - (JFK BLVD)
Scale: 1/64" = 1'-0"



2 West Building Elevation
Scale: 1/64" = 1'-0"

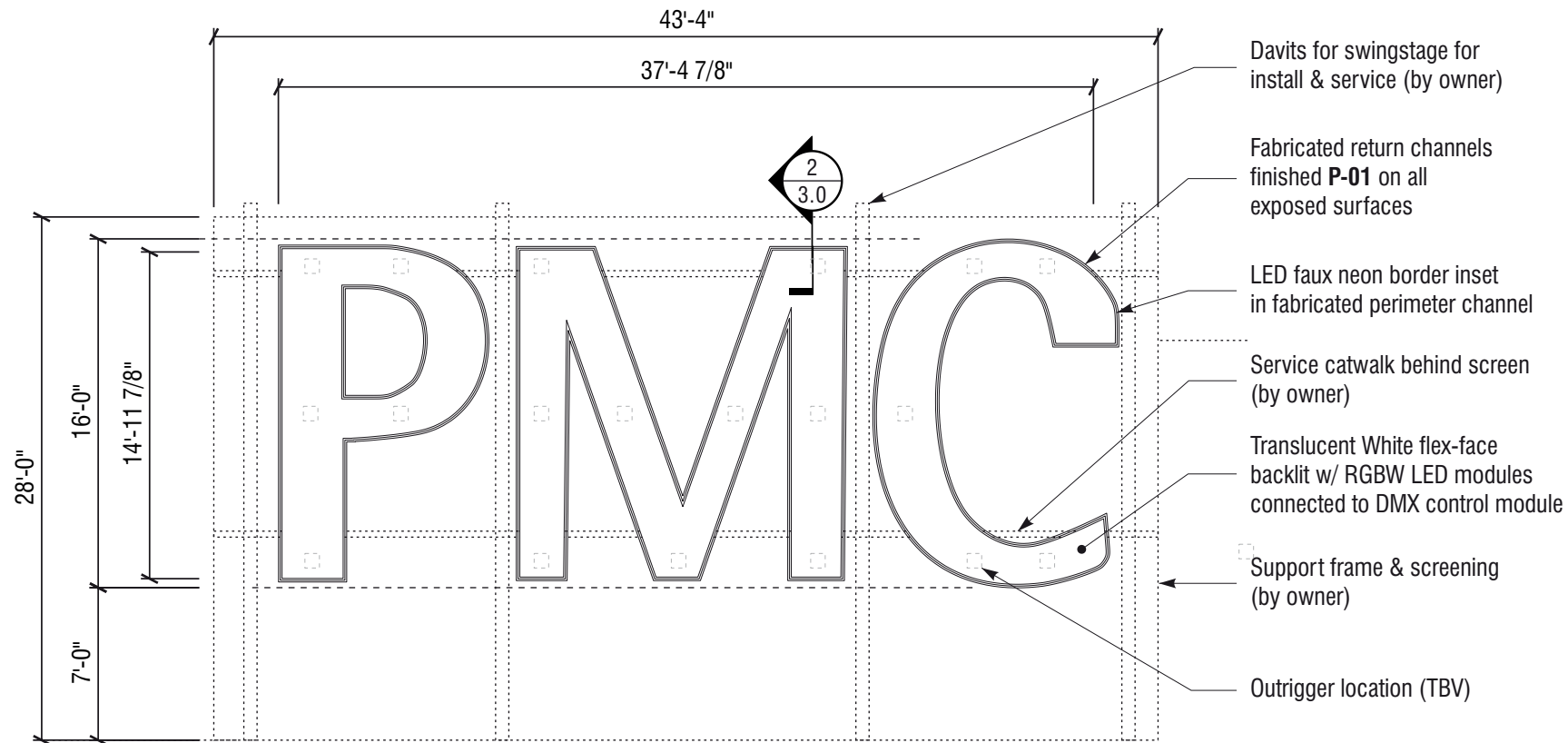


3 Compass Road
Mount Holly, NJ 08060
856.767.3520
www.novaindustrialarts.com

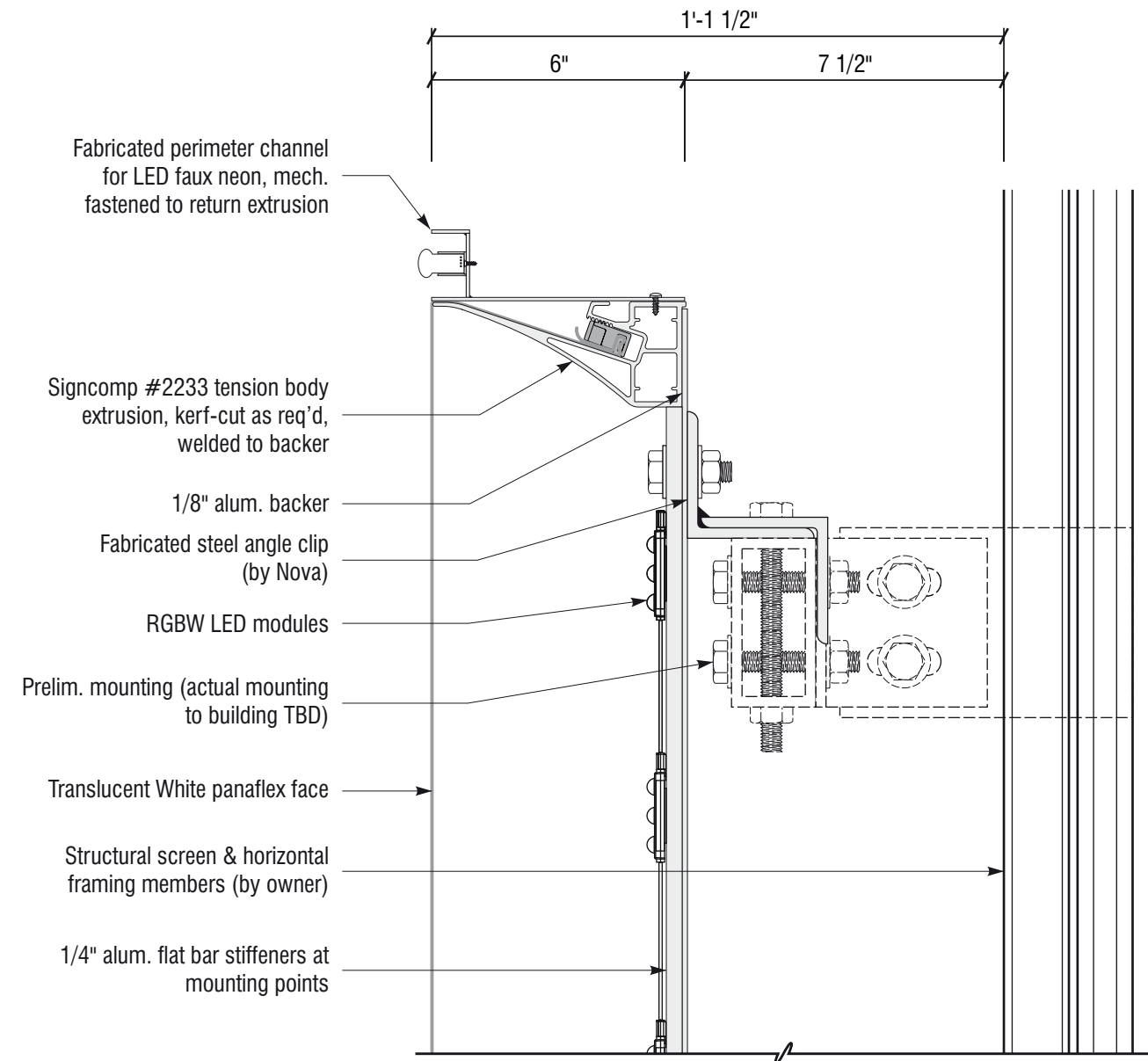
PROJECT INFORMATION		NOVA CONTACT		DRAWING DATES		APPROVALS	
CLIENT	PMC Property Group	SALES REP	C. Kennedy	INITIAL DRAWING	04.26.24	<input type="checkbox"/> Approved <input type="checkbox"/> Approved as Noted <input type="checkbox"/> Revise & Resubmit	
JOB NAME	PMC Hi-Rise Letteset	PROJECT MANAGER	M. Simiriglia	REVISION	▲ 07.18.24 BY BMA	NAME	
JOB LOCATION	2901 JFK Boulevard				▲ 07.02.24 BMA	DATE	
	Philadelphia, PA	DESIGNER	B. Askew		▲ 07.17.24 BMA	NOTE	



PROJECT NUMBER 24029
SHEET NUMBER 2.1



1 Letter Elevation
Scale: 1/8"=1'-0"



2 Letter Section (Typ.)
Scale: 1/4"=1"

Finish Specs

P-01
Akzo Nobel Paint
White, Satin Finish

M-01
Panaflex
White



3 Compass Road
Mount Holly, NJ 08060
856.767.3520
www.novaindustrialarts.com

PROJECT INFORMATION		NOVA CONTACT		DRAWING DATES		APPROVALS	
CLIENT	PMC Property Group	SALES REP	C. Kennedy	INITIAL DRAWING	04.26.24	<input type="checkbox"/> Approved <input type="checkbox"/> Approved as Noted <input type="checkbox"/> Revise & Resubmit	
JOB NAME	PMC Hi-Rise Letteset	PROJECT MANAGER	M. Simiriglia	REVISION	4 07.18.24 BY BMA	NAME	
JOB LOCATION	2901 JFK Boulevard				2 07.02.24 BMA	DATE	
	Philadelphia, PA	DESIGNER	B. Askew		3 07.17.24 BMA	NOTE	



PROJECT NUMBER **24029**
SHEET NUMBER **3.0**



1 Illumination Rendering
Scale: NTS



2 Illumination Rendering
Scale: NTS



3 Compass Road
Mount Holly, NJ 08060
856.767.3520
www.novaindustrialarts.com

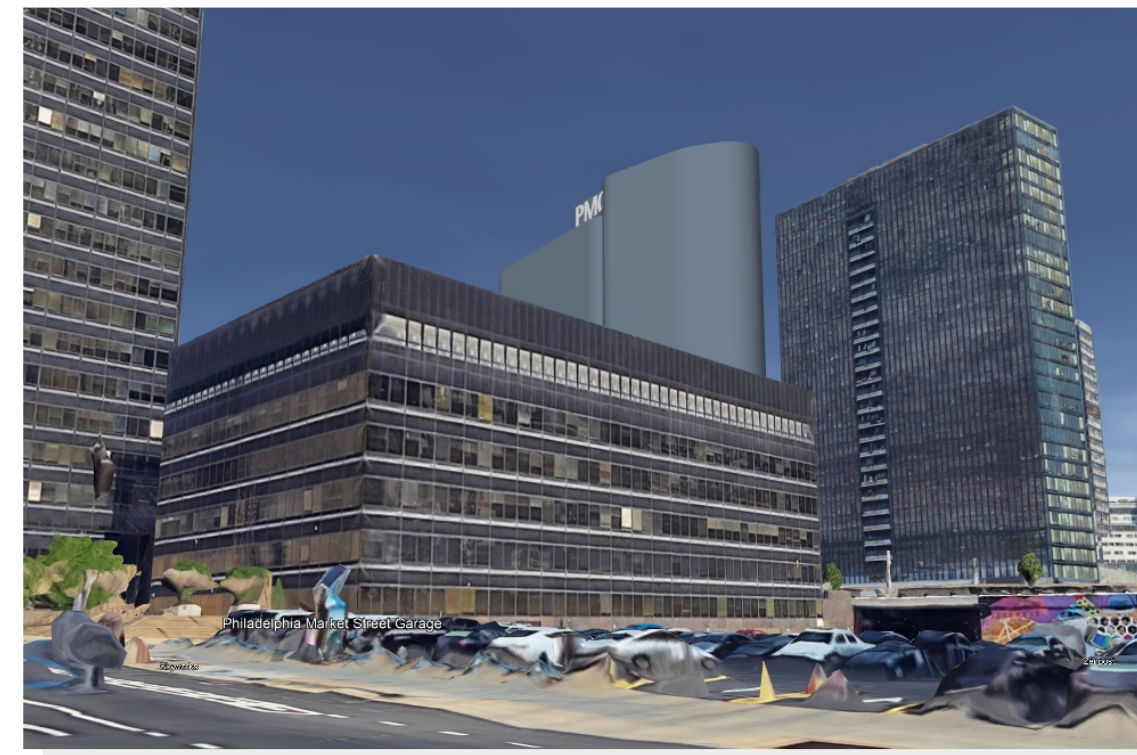
PROJECT INFORMATION		NOVA CONTACT		DRAWING DATES		APPROVALS	
CLIENT	PMC Property Group	SALES REP	C. Kennedy	INITIAL DRAWING	04.26.24	<input type="checkbox"/> Approved <input type="checkbox"/> Approved as Noted <input type="checkbox"/> Revise & Resubmit	
JOB NAME	PMC Hi-Rise Letteset	PROJECT MANAGER	M. Simiriglia	REVISION	4 07.18.24 BY BMA	NAME	
JOB LOCATION	2901 JFK Boulevard				2 07.02.24 BMA	DATE	
	Philadelphia, PA	DESIGNER	B. Askew		3 07.17.24 BMA	NOTE	



PROJECT NUMBER 24029
SHEET NUMBER 4.0



View From Schuylkill Expressway



View From North 23rd and Market St



View from Walnut St & I-76



View From I-76E



3 Compass Road
Mount Holly, NJ 08060
856.767.3520
www.novaindustrialarts.com

PROJECT INFORMATION

CLIENT **PMC Property Group**
JOB NAME **PMC Hi-Rise Letteset**
JOB LOCATION **2901 JFK Boulevard Philadelphia, PA**

NOVA CONTACT

SALES REP **C. Kennedy**
PROJECT MANAGER **M. Simiriglia**
DESIGNER **B. Askew**

DRAWING DATES

INITIAL DRAWING **04.26.24**
REVISION **4** **07.18.24** BY **BMA**
2 **07.02.24** **BMA**
3 **07.17.24** **BMA**

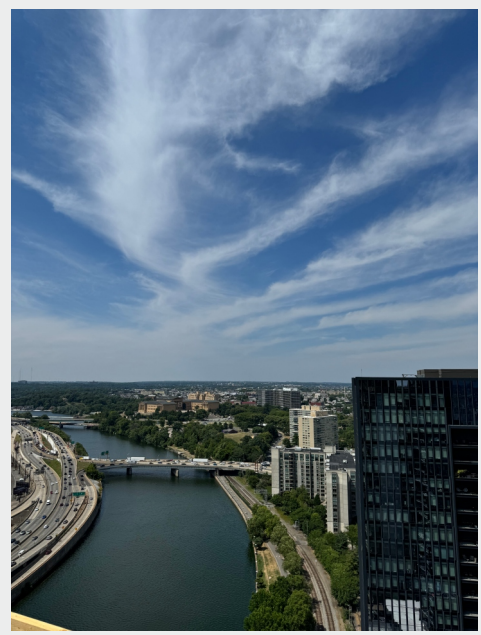
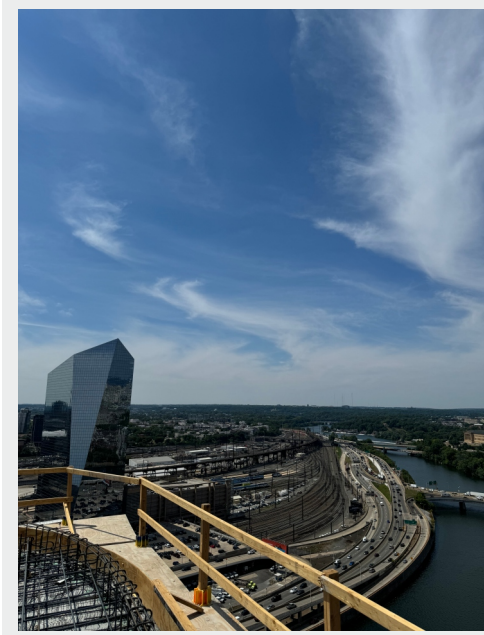
APPROVALS

Approved Approved as Noted Revise & Resubmit
NAME
DATE
NOTE



PROJECT NUMBER **24029**

SHEET NUMBER **5.0**



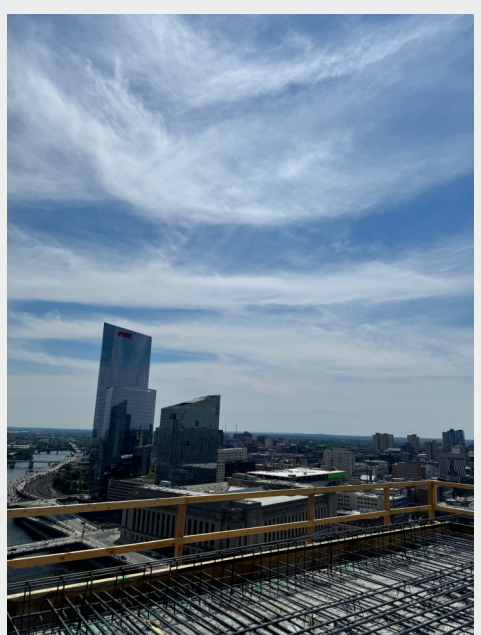
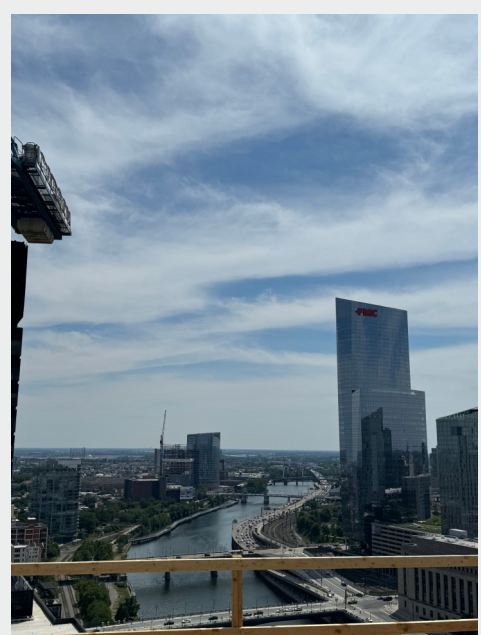
Looking North



Looking Northeast



Looking West



Looking South



Looking Southwest



3 Compass Road
Mount Holly, NJ 08060
856.767.3520
www.novaindustrialarts.com

PROJECT INFORMATION

CLIENT **PMC Property Group**
JOB NAME **PMC Hi-Rise Letteset**
JOB LOCATION **2901 JFK Boulevard Philadelphia, PA**

NOVA CONTACT

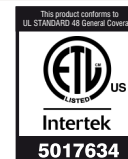
SALES REP **C. Kennedy**
PROJECT MANAGER **M. Simiriglia**
DESIGNER **B. Askew**

DRAWING DATES

INITIAL DRAWING **04.26.24**
REVISION **4** **07.18.24** BY **BMA**
2 **07.02.24** **BMA**
3 **07.17.24** **BMA**

APPROVALS

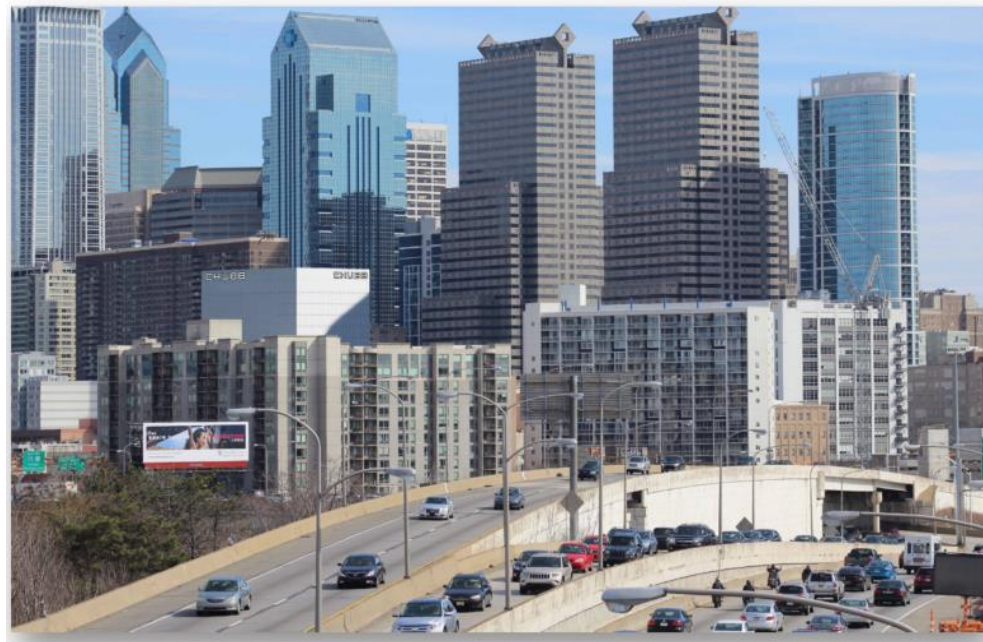
Approved Approved as Noted Revise & Resubmit
NAME _____
DATE _____
NOTE _____



PROJECT NUMBER **24029**

SHEET NUMBER **5.1**

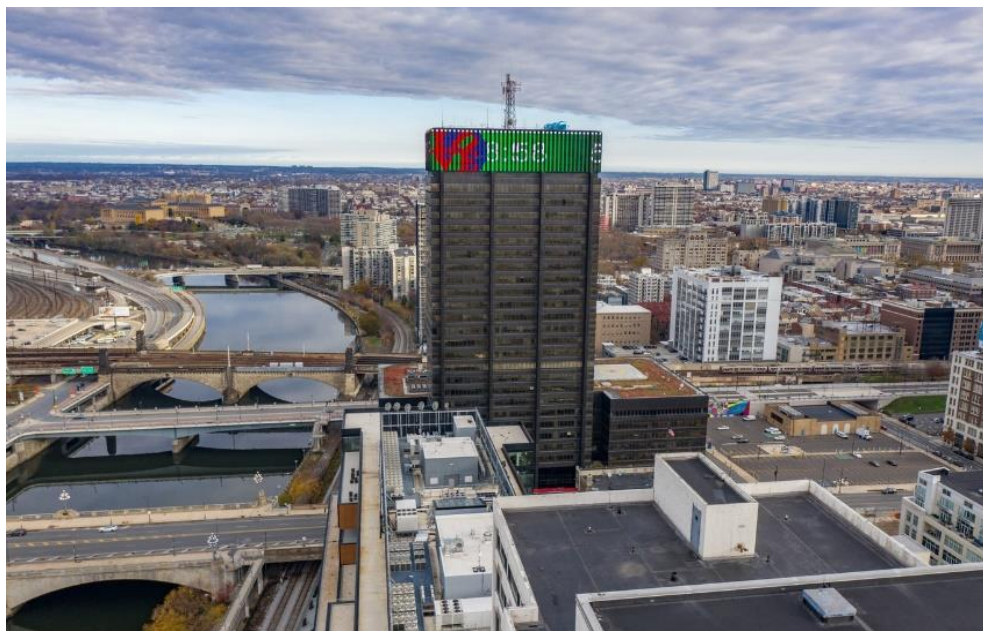
Neighboring Skyline Signage



CHUBB



Aramark



PECO



Jefferson



3 Compass Road
Mount Holly, NJ 08060
856.767.3520
www.novaindustrialarts.com

PROJECT INFORMATION NOVA CONTACT DRAWING DATES APPROVALS

CLIENT	PMC Property Group	SALES REP	C. Kennedy	INITIAL DRAWING	04.26.24	<input type="checkbox"/> Approved <input type="checkbox"/> Approved as Noted <input type="checkbox"/> Revise & Resubmit	
JOB NAME	PMC Hi-Rise Letteset	PROJECT MANAGER	M. Simiriglia	REVISION	4 07.18.24	BY	BMA
JOB LOCATION	2901 JFK Boulevard				2 07.02.24		BMA
	Philadelphia, PA	DESIGNER	B. Askew		3 07.17.24		BMA



PROJECT NUMBER **24029**
SHEET NUMBER **6.0**