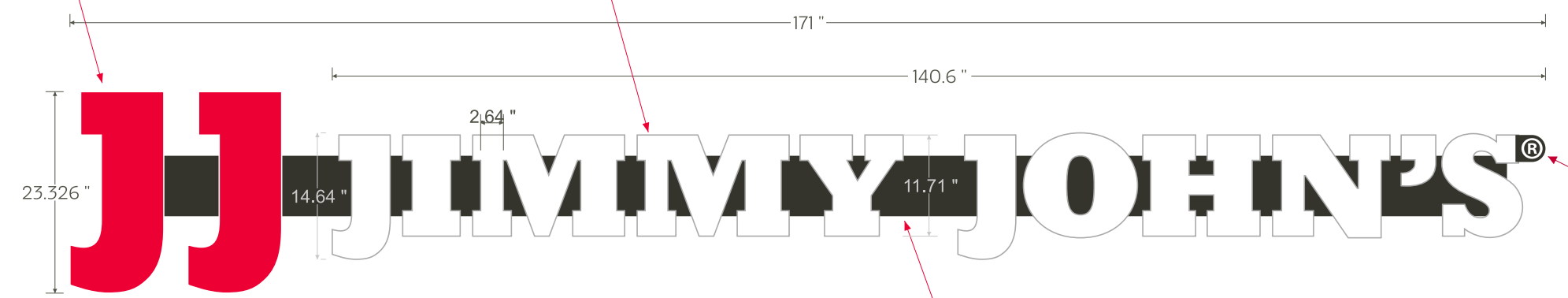


Red faced "JJ" will have custom red faces, white trim caps, and white returns

Front View

"JIMMY JOHNS" Channel Letters white faces, white returns & white trim caps



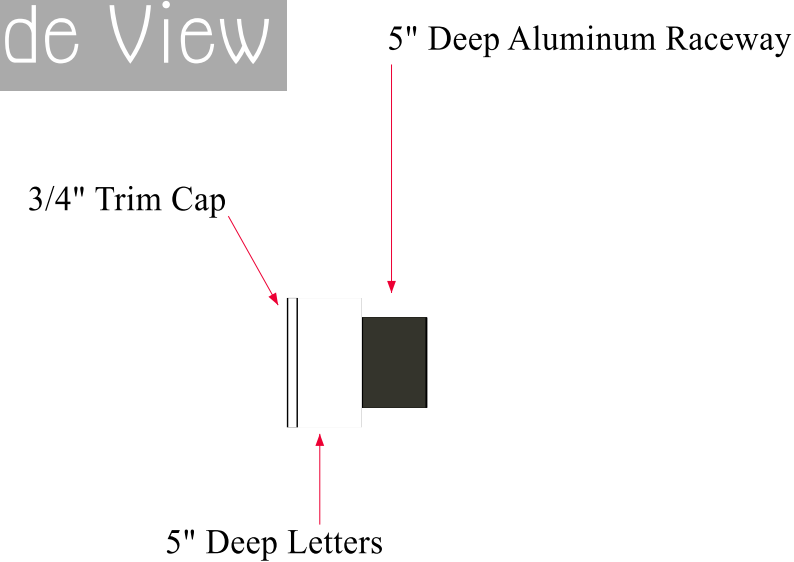
- white faces and white vinyl ®
- oracal 016 translucent crimson faces
- raceway painted to match building (black - satin finish)

-QTY: 1
 -Front Illuminated
 -Channel Letter Sign on Raceway (5" deep letters and raceway)
 white trim cap and returns

Raceway painted to match building color (black - satin finish)

.040 precoated aluminum painted to match building color (black - satin finish)
 white vinyl
 attached to the back of the letter "s"

Side View



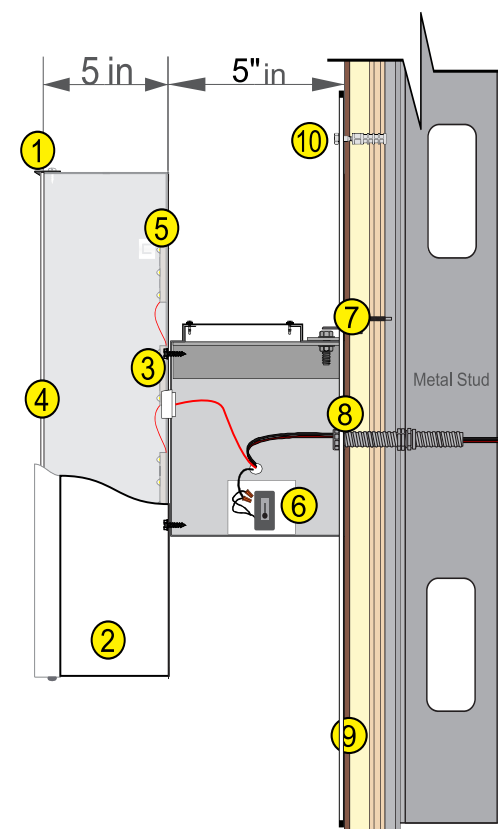
Existing



Proposed



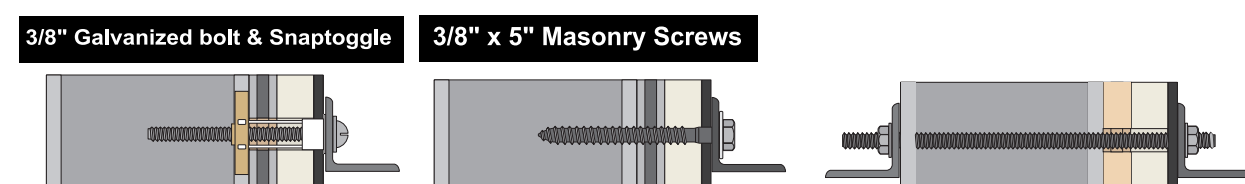
- 1) Trim Cap - 313 Bronze w/ matching sheet metal screws.
- 2) Case - w/ 1/4" weepholes
- 3) LEDs - White w/ ClassII low voltage wiring
- 4) 3/16" Acrylic Face w/ vinyl application
- 5) Galv. #10 Hex-head Sheet-metal Screws
- 6) Raceway w/ Power Supply w/ Cut-Switch (Left Side) (Painted to match existing facade)
- 7) Mounting Hardware (3/8" x 5" Galv. Lag Bolts)
- 8) MC Wiring Cable
- 9) Wall- metal face over brick
- 10) 6" lag and shield to mount aluminum to brick wall

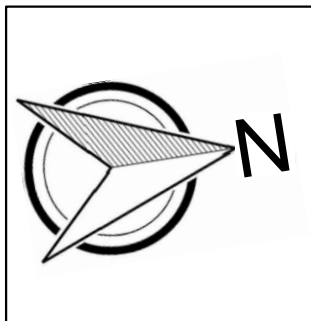


Channel Letter Detail Mounting to a Raceway

(TYP) Mounting Detail

ALTERNATIVE MOUNTING OPTION





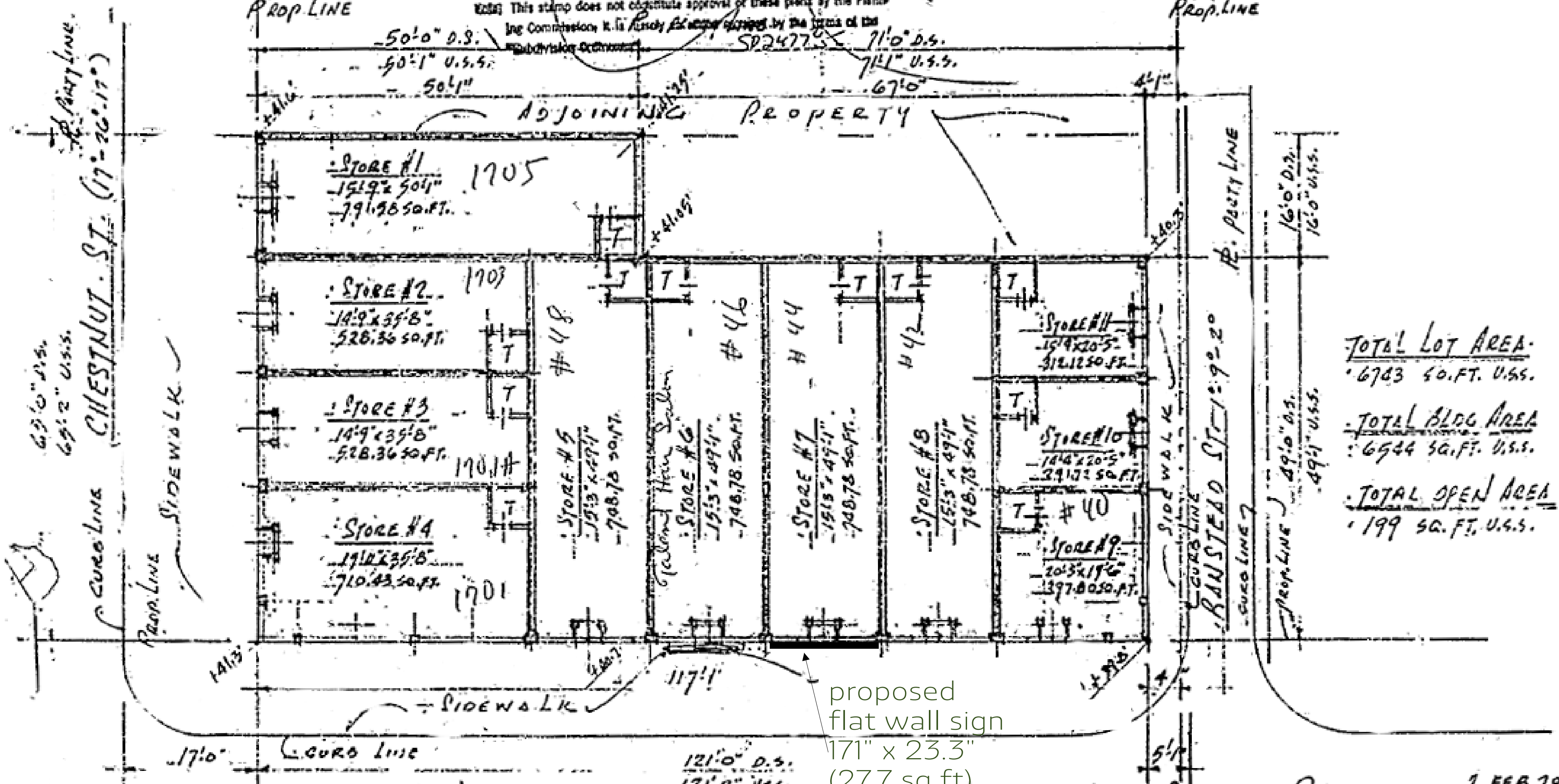
scale: 1" = 10'

FEB 8 1978

PHILADELPHIA CITY PLANNING COMMISSION

This stamp does not constitute approval of these plans by the Planning Commission. It is merely evidence of filing by the terms of the Subdivision Ordinance.

ADJOINING PROPERTY



TOTAL LOT AREA:
6783 SQ. FT. U.S.S.

TOTAL BLDG AREA:
6544 SQ. FT. U.S.S.

TOTAL OPEN AREA:
199 SQ. FT. U.S.S.

proposed flat wall sign
171" x 23.3"
(27.7 sq ft)

SEVENTEENTH ST. (12° 26' 12")

PLOT PLAN. SCALE 1" = 10'

CHESTNUT STREET STORES. 1 FEB 78
N.W. COR SEVENTEENTH & CHESTNUT STS. #655
PHILADELPHIA, PA. - 2-1A1

JJ JIMMY JOHN'S®

166.25"

17.875"

