

side view (not to scale)
without mounting plate

.063 black alum with logo routed out
.063 white aluminum (shows thru routed out area)



2" TUBULAR ALUMINUM FRAME PAINTED BLACK

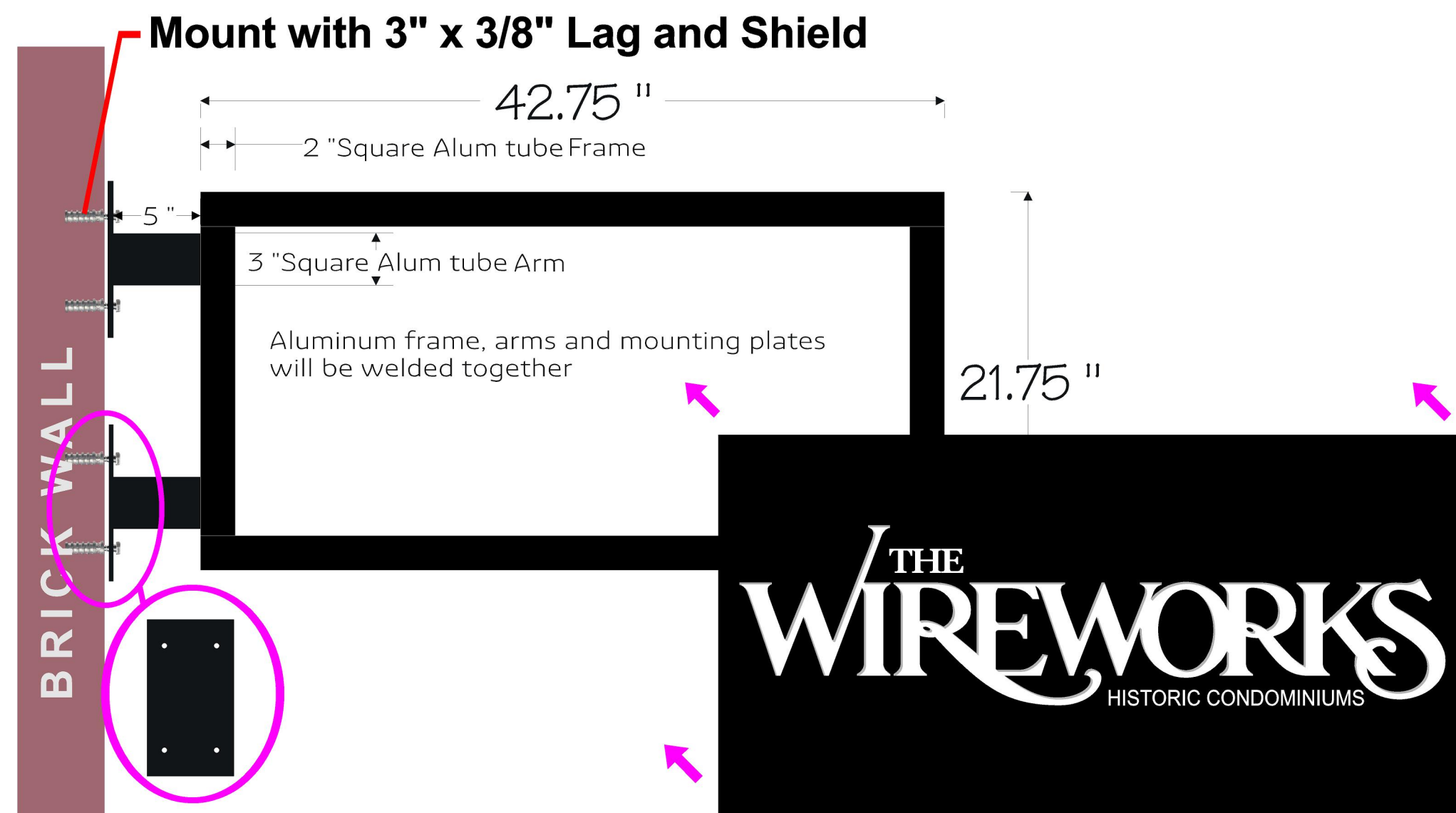
5" w x 9" h wall steel mounting plate



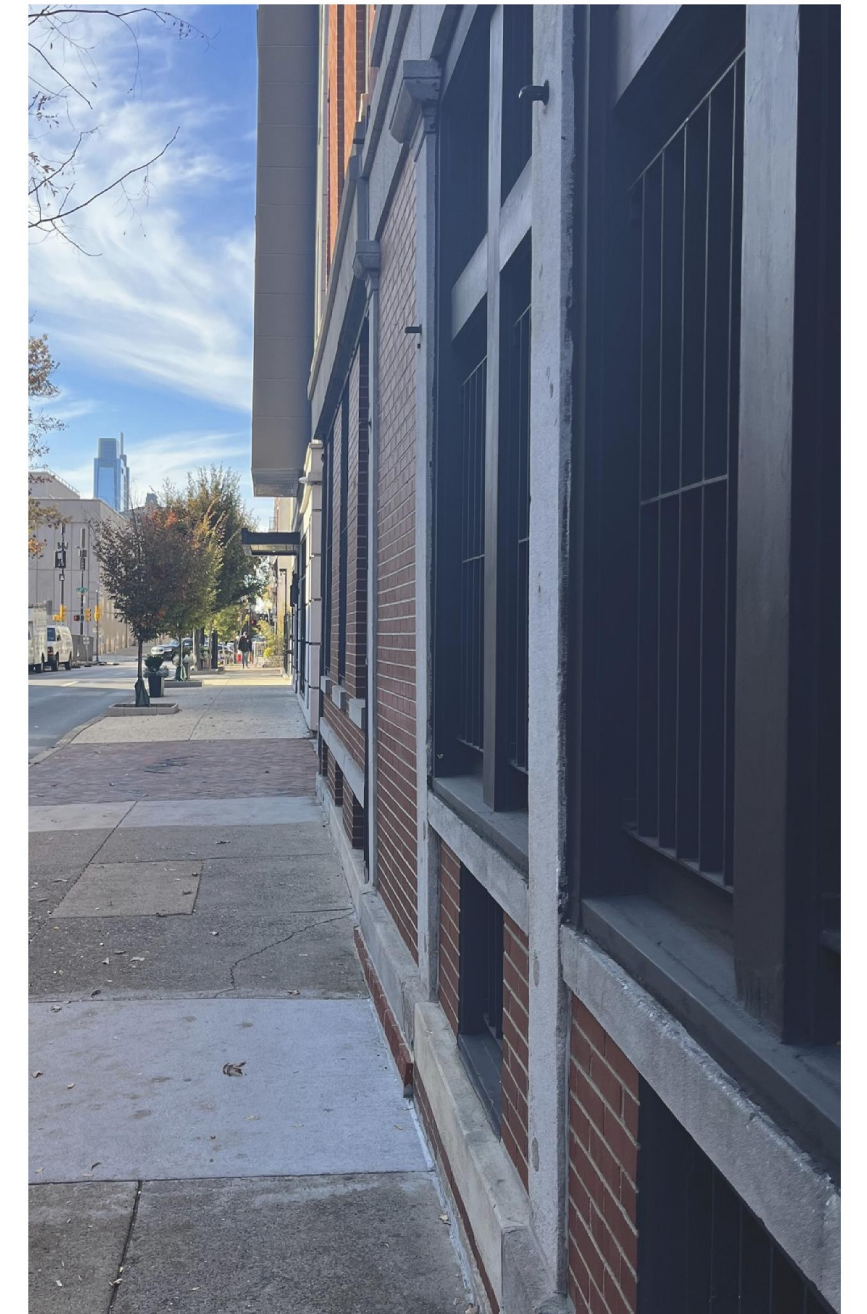
Sign Faces (2) Size: 22" h x 43" w
Bracket Size: Arms to be 5" long made from 3" square aluminum tube
..... Wall plate to be 5" w x 9" h
Content: The front black face of the sign will be routed with the Customer's Logo
..... The front face will be backed with white painted aluminum to highlight the name for clear visibility
Materials: The faces to be produced of 0.063" aluminum
The interior frame to be a tubular aluminum chassis
Installation: To be mounted directly onto the exterior brick of the Wireworks Building. Will go on the corner of the building below the stone masonry.

**"THE" and "HISTORIC CONDOMINIUMS" Letters are too small to route

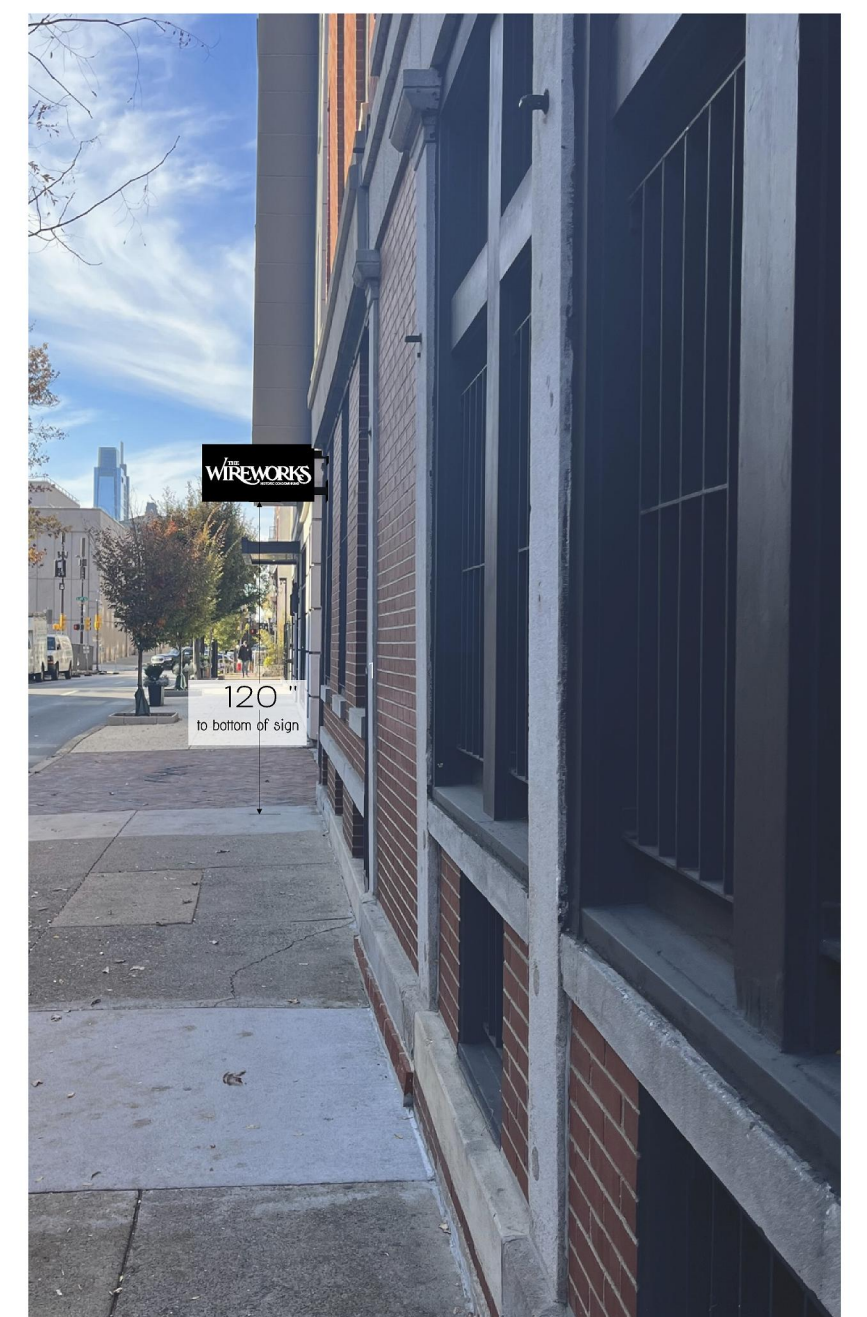
Frame View

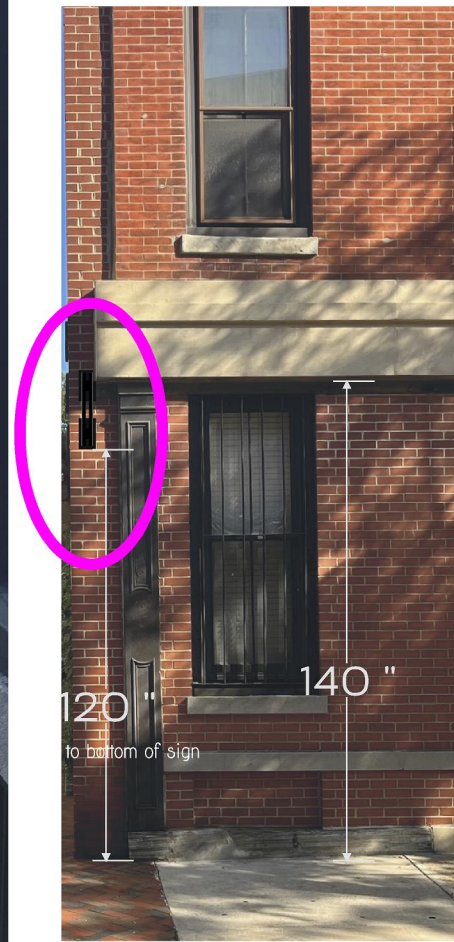
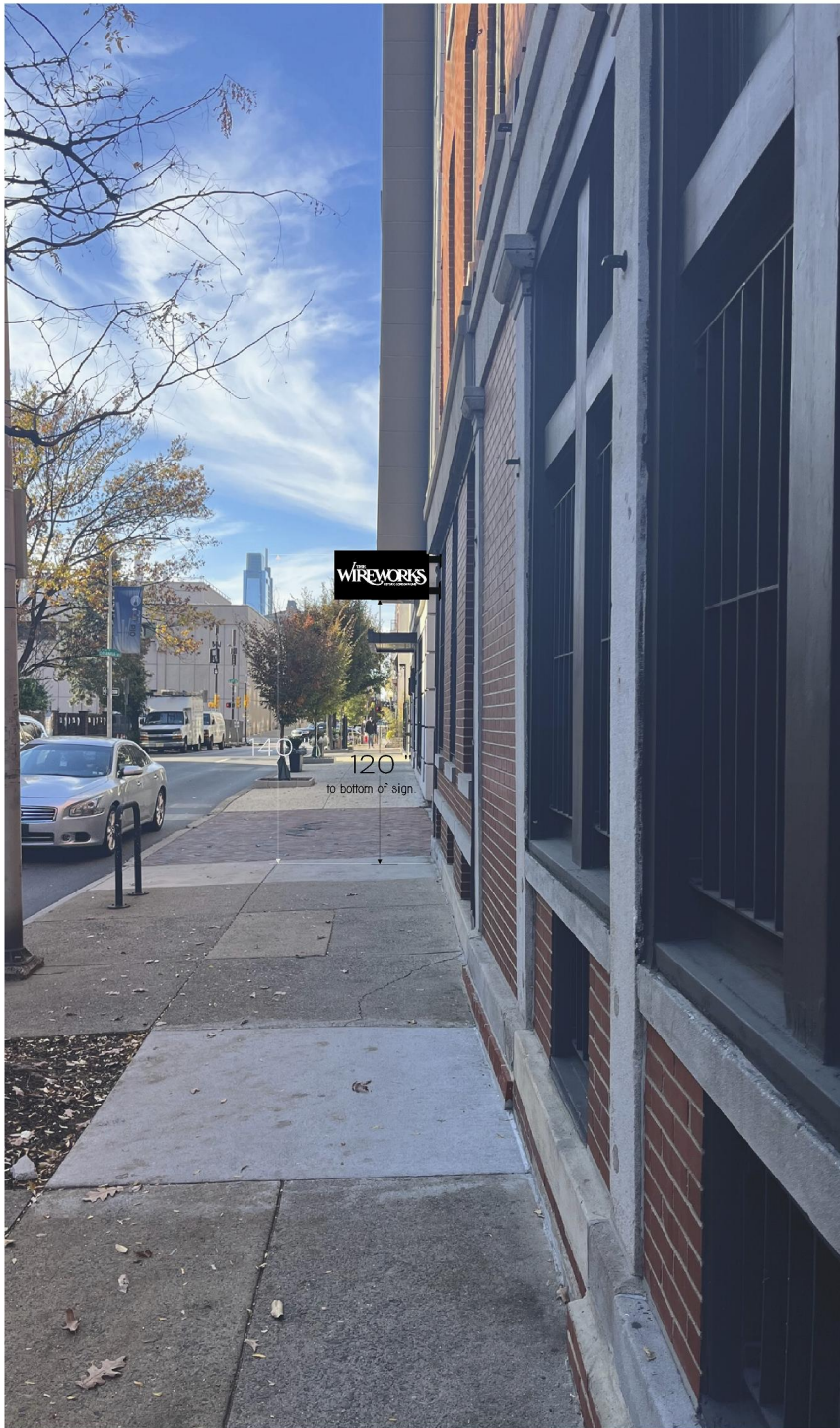


Existing



Proposed





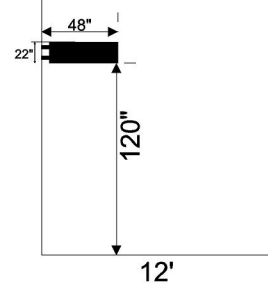
Existing signs



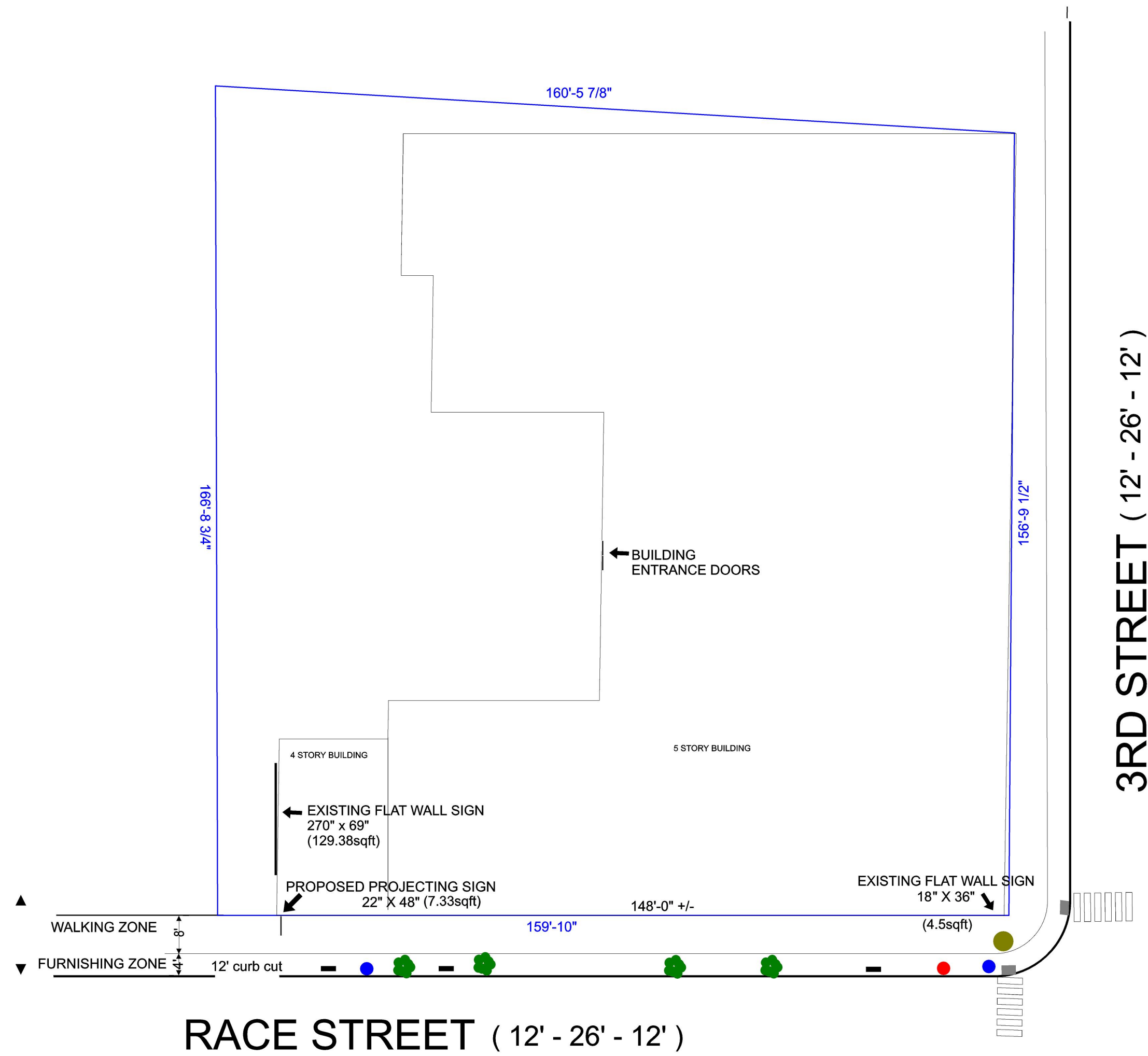
LEGEND

- FIRE HYDRANT
- STREET LIGHT POLE
- MANHOLE COVER
- PROPERTY LINE
- HANDICAP CURB
- TREE
- BICYCLE RACK

ELEVATION



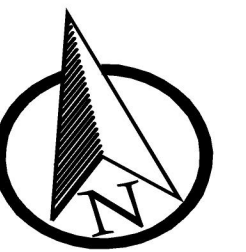
SCALE: 1"=10'



RACE STREET (12' - 26' - 12')

3RD STREET (12' - 26' - 12')

301 RACE STREET
PHILADELPHIA, PA 19106



SCALE: 1"=20'

11/17/23

SITE
PLAN