

June 26, 2024

Alex Smith
Philadelphia Art Commission
City of Philadelphia
1515 Arch Street
Philadelphia PA 19102

RE: SEPTA South Broad ADA Improvements – Lombard-South Station – Revised Per 4/10/24 Comments

Dear Alex,

Jacobs has been contracted by SEPTA to provide architectural design and engineering services at the Lombard-South Station on South Broad Street to improve ADA accessibility. On behalf of SEPTA, Jacobs respectfully requests the Art Commission's review of the revised submission for SEPTA's Lombard-South Station ADA Improvements Project. This updated submission addresses comments provided by the Art Commission at the previous April 10, 2024, meeting and includes the following station and location:

- **Lombard-South**
500 S Broad Street
Philadelphia, PA

See previous cover letter of package dated 3/22/24 for an overview of the project including ADA interventions and materials that remain mostly unchanged. The following paragraphs describe updates to the design since the previous submission.

LED monitors

Existing LED monitors by 'Intersection' will be salvaged and reinstalled, at similar locations and heights using similar stainless steel tube supports as approved throughout at several of SEPTA's other stations. At Lombard-South, the monitor at the NE stair will be supported by a horizontal stainless steel tube member spanning between two posts for the new roof canopy. See revised sheets A-16, A-16a, A-25, A-26, A-26a.

Lighting Fixture Types - Elevator

See provided night rendering on sheet A-13b. In compliance with SEPTA's standard lighting for Elevator Headhouses at adjacent stations, LED strip lights will be provided inside the hoistway, along the vertical steel elements at the edges of the solid glass block. The illumination will emit through the glass block making a lantern-type effect above the sidewalk. Downlights in the canopy over the elevator entrance provide additional illumination of the sidewalk surface. SEPTA's latest signage standards include illuminated lighting mounted on several sides of the hoistway, which provide help to orient the public users during night hours.

Lighting Fixture Types – Stairs

See provided night rendering on sheet A-16a. The design has been revised to include several wall mounted up and down light fixtures affixed to both the inner and outer faces of each of the steel posts

supporting the new stair canopy at the NW & NE stairs. There will also be a linear light provided to illuminate the sign above the stair entrance.

Security Gate

At all four stairs, each security gate will be replaced with a new stainless steel gate on the intermediate landing, (in their current locations) just below the sidewalk. SEPTA's standards require a single leaf gate, which will not be feasible at the sidewalk level at the two new canopies (NW + NE). If placed at the sidewalk, the gate must swing in towards the stair and the headhouse canopy length would grow too long and obstruct clear required widths and access paths on the sidewalk. If the gate swung out, there would be no feasible way to secure the gate open and not obstruct adjacent areas of sidewalk.

With the relocation of the gate on the NE & NW stairs down to the intermediate landing, the canopy structure length has been reduced by roughly 4'-0", see revised sheets A-9 and A-10. This reduction of length provides additional clear width to the existing ADA curb cut ramp on the NE corner and additional clear width to the existing traffic light on the NW corner.

Existing Planters

Two of three existing brick planters are along Broad Street and must be at least partially removed for installation of the elevator hoistway and elevator machine room walls and necessary excavation. Two rendering options (A-13, A-13a & A-14, A-14a) have been provided, as discussion with the owner of the adjacent senior center is not yet complete. Option 1 - re-building the planters would benefit the green, pervious area of the city and return the amenity to the adjacent porch of the senior center. Option 2 - the return of the usable sidewalk width, to be occupied by the elevator, is also a benefit to the pedestrians along the street.

Granite – To Match Existing

See updated materials palette on sheet A-28. The granite color and pattern has been revised to match existing.

Downspout Removed

Downspouts have been removed at stair NE & NW Stair canopies. See revised Sheets A-25, A-26.

Please feel free to contact me with any questions about the project in advance to the next meeting on July 10th. We look forward to discussing the project with the Philadelphia Art Commission.

Sincerely,

Brian J. Fitzhenry, PE

Senior Project Manager – Rail Buildings & Structures

1-215-514-8957

Brian.Fitzhenry@jacobs.com

Jacobs

Two Commerce Square
2001 Market St, Suite 900
Philadelphia, PA 19103

CC: John McElwee, SEPTA
Sean McMahon, PMP, SEPTA
Victoria Lupica, SEPTA

Julia Guerrero, Civic-Centered
Matt Morong, RA, Jacobs
Fred Kaulbach, RA, Jacobs

The Philadelphia Art Commission Decision Form

The Philadelphia Art Commission

Established 1911

Robert Roesch
Chair

José Almiñana

Carmen Febo San Miguel

Deborah Cahill

Sarah McEneaney

Matthew Kenyatta

Raed Nasser

Pepón Osorio

Mario Zacharjasz

Alex M. Smith
Director

File #: 95-24 **Commission Meeting Date:** 04/10/2024

Name: Brian Fitzhenry
Jacobs
Two Commerce Square, 2001 Market St., Suite 900
Philadelphia, PA 19103

Project Name & Location: SEPTA ADA Improvements - Lombard-South Station
S Broad St. & Lombard/South St.

Proposal: The proposal is for upgrades and ADA improvements to SEPTA's Lombard-South Station. One new elevator is planned to be built in front of the senior center. This elevator will be built with a granite base, glass block, and metal panels. New headhouses will be built over the two of the four stairway entrances. The headhouses will be made of granite bases, S.S. rods, and a metal roof. The southeast and southwest entrances are historic and will be restored. These will not have new headhouses.

Commission Decision: CONCEPT APPROVAL

Remarks: The Commissioners would like for the downspout to be removed, more information about the types of lighting that will be used, night renderings, and information about what will happen with the LED monitors. Commissioners also suggested that the design of the elevator headhouses proposed along N Broad Street (as part of separate applications), including the sculptural ceiling treatments, be considered at this location as well.



Alex M. Smith
Director of the Philadelphia Art Commission

One Parkway Building
1515 Arch Street
13th Floor
Philadelphia, PA 19102

215-683-4636
artcommission@phila.gov

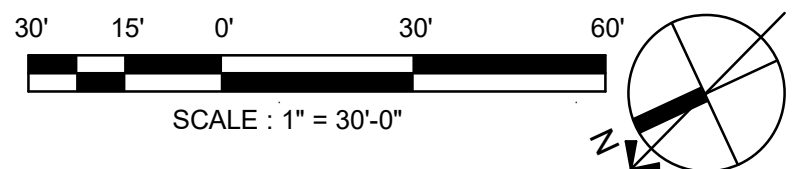
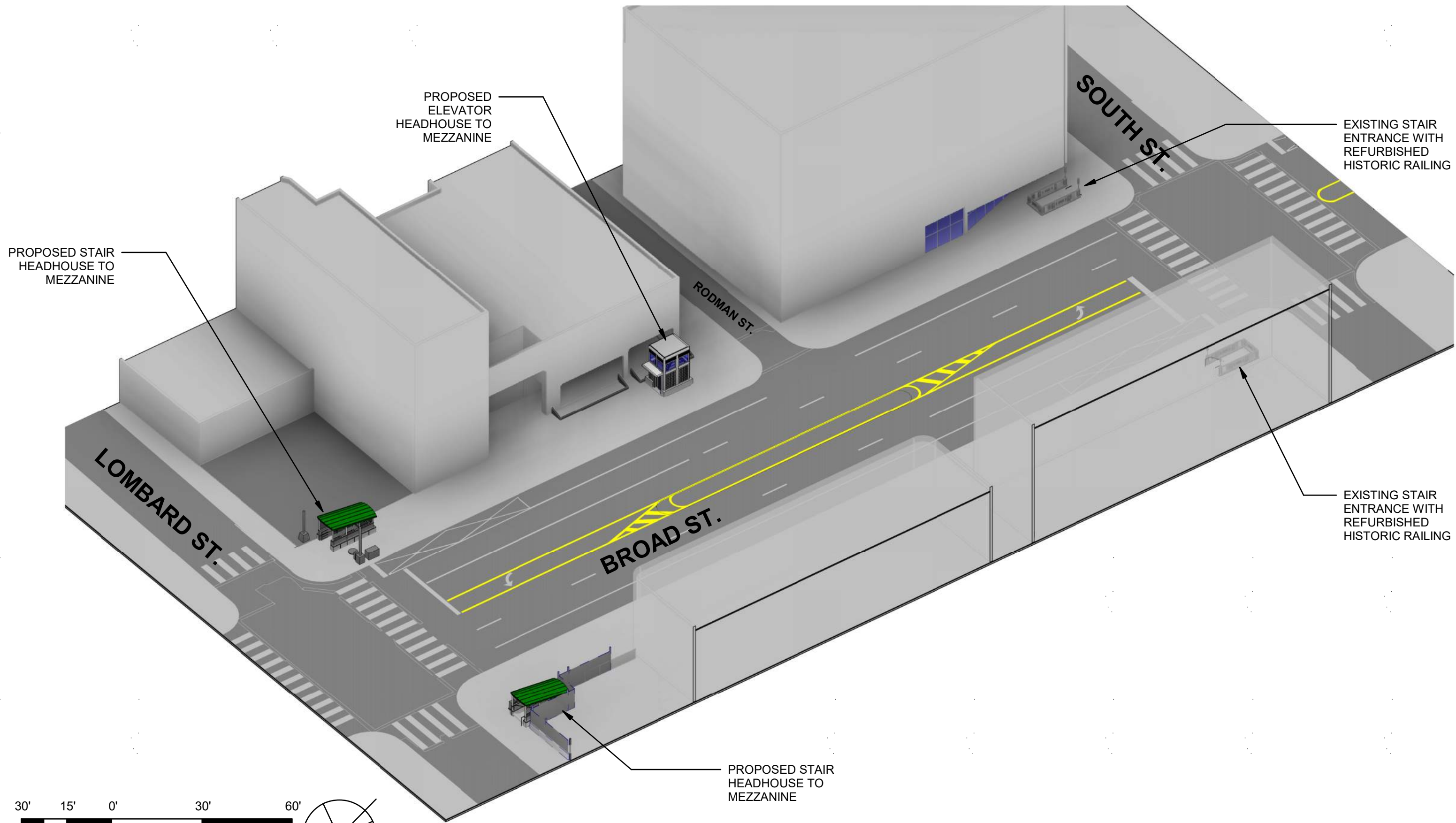
Art Commission approval is not an endorsement for any approval, exception or variance that the proposal might require from any other department, board or commission.



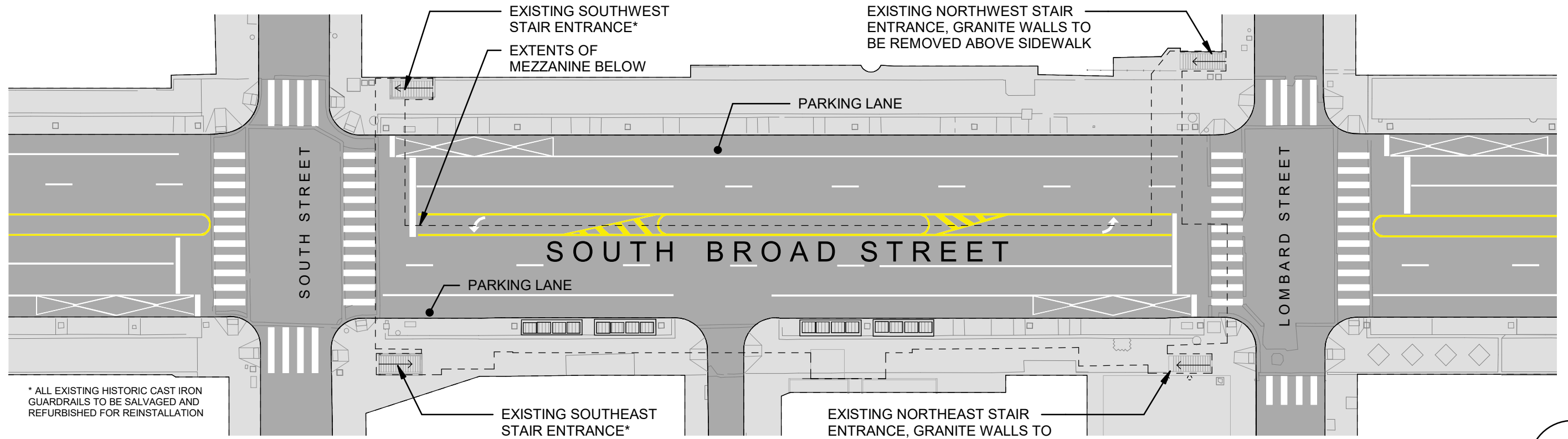
**LOMBARD-SOUTH STATION
ADA IMPROVEMENTS**

PHILADELPHIA ART COMMISSION PRESENTATION

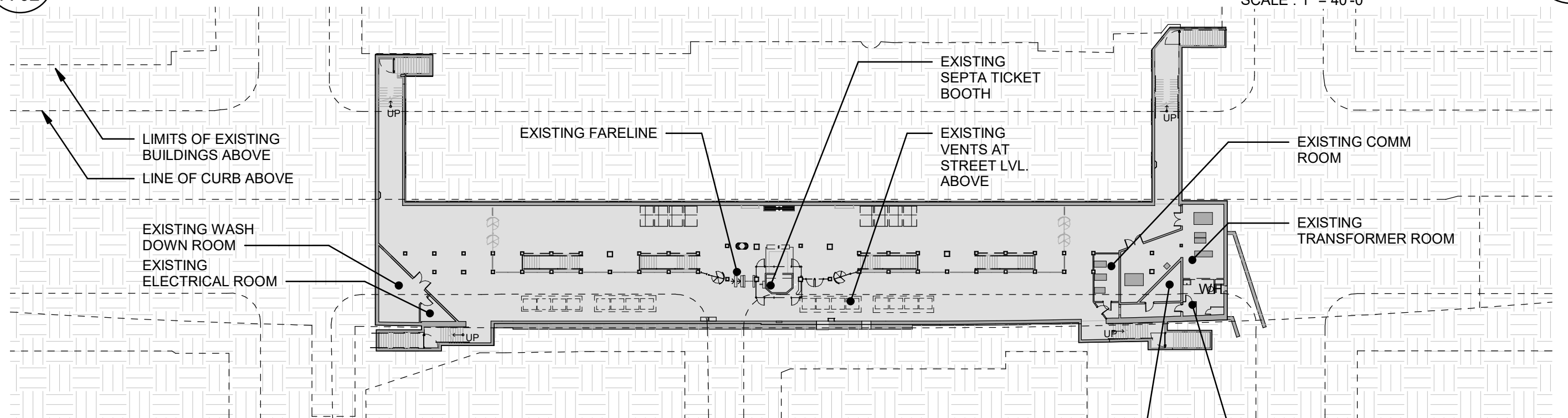
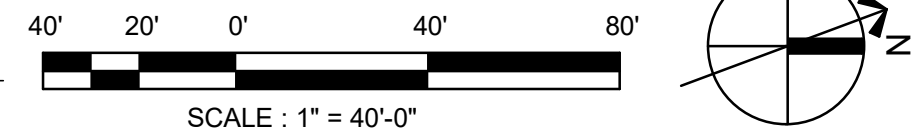
Jacobs



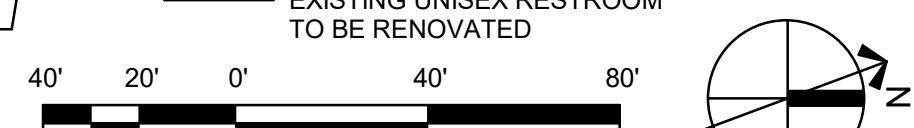
STREET LEVEL AXONOMETRIC
LOMBARD-SOUTH STATION
 JUNE 25, 2024
 A-01



1 EXISTING OVERALL STREET LEVEL PLAN
A-02 SCALE: 1" = 40'-0"



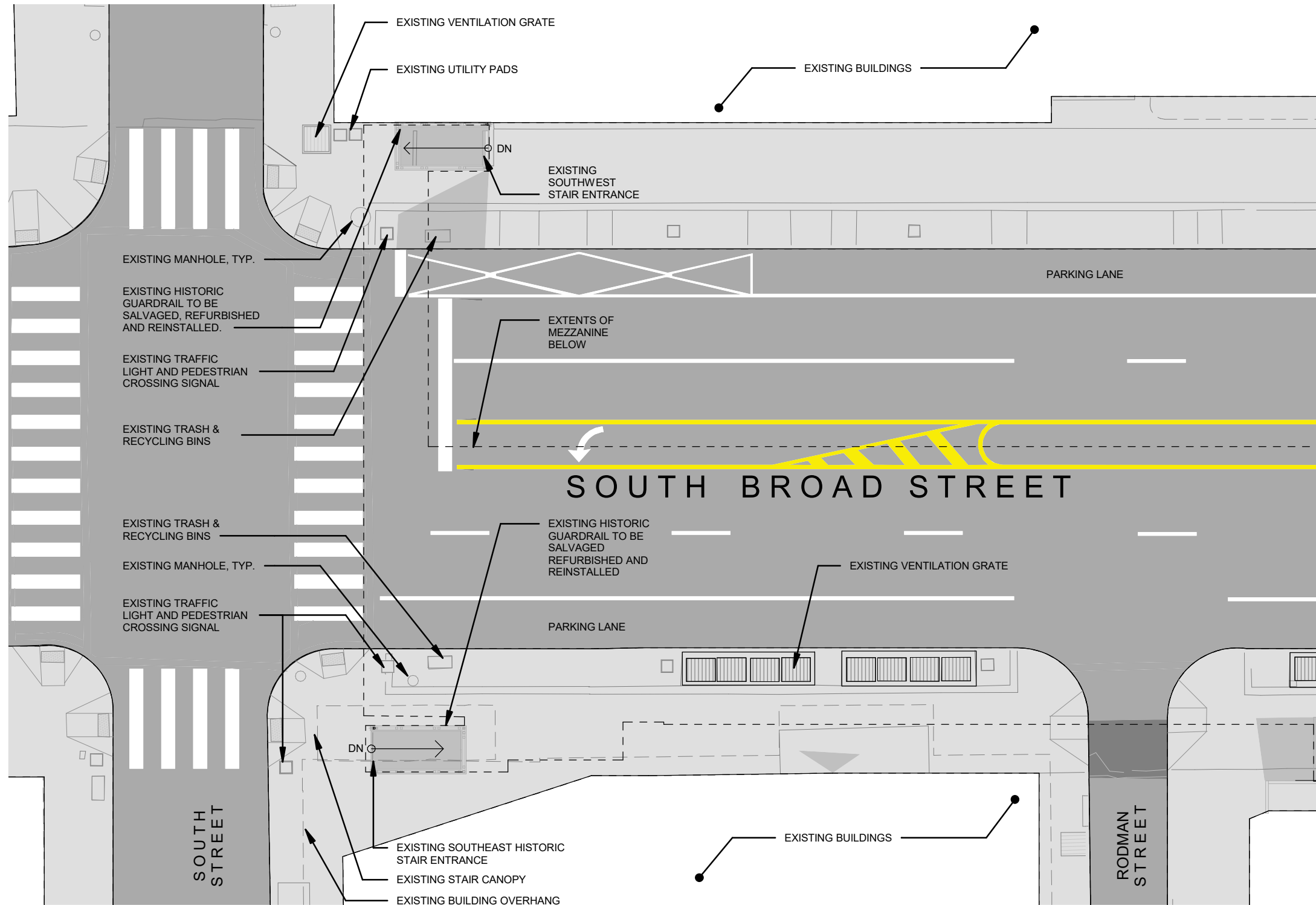
2 EXISTING OVERALL MEZZANINE LEVEL PLAN
A-02 SCALE: 1" = 40'-0"



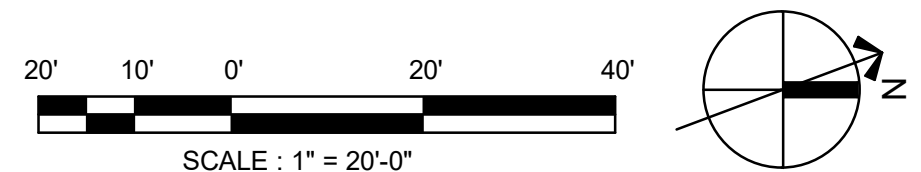
EXISTING OVERALL PLANS
LOMBARD-SOUTH STATION

JUNE 25, 2024

A-02



1 EXISTING STREET LEVEL PLAN - SOUTH
 A-03 SCALE: 1" = 20'-0"

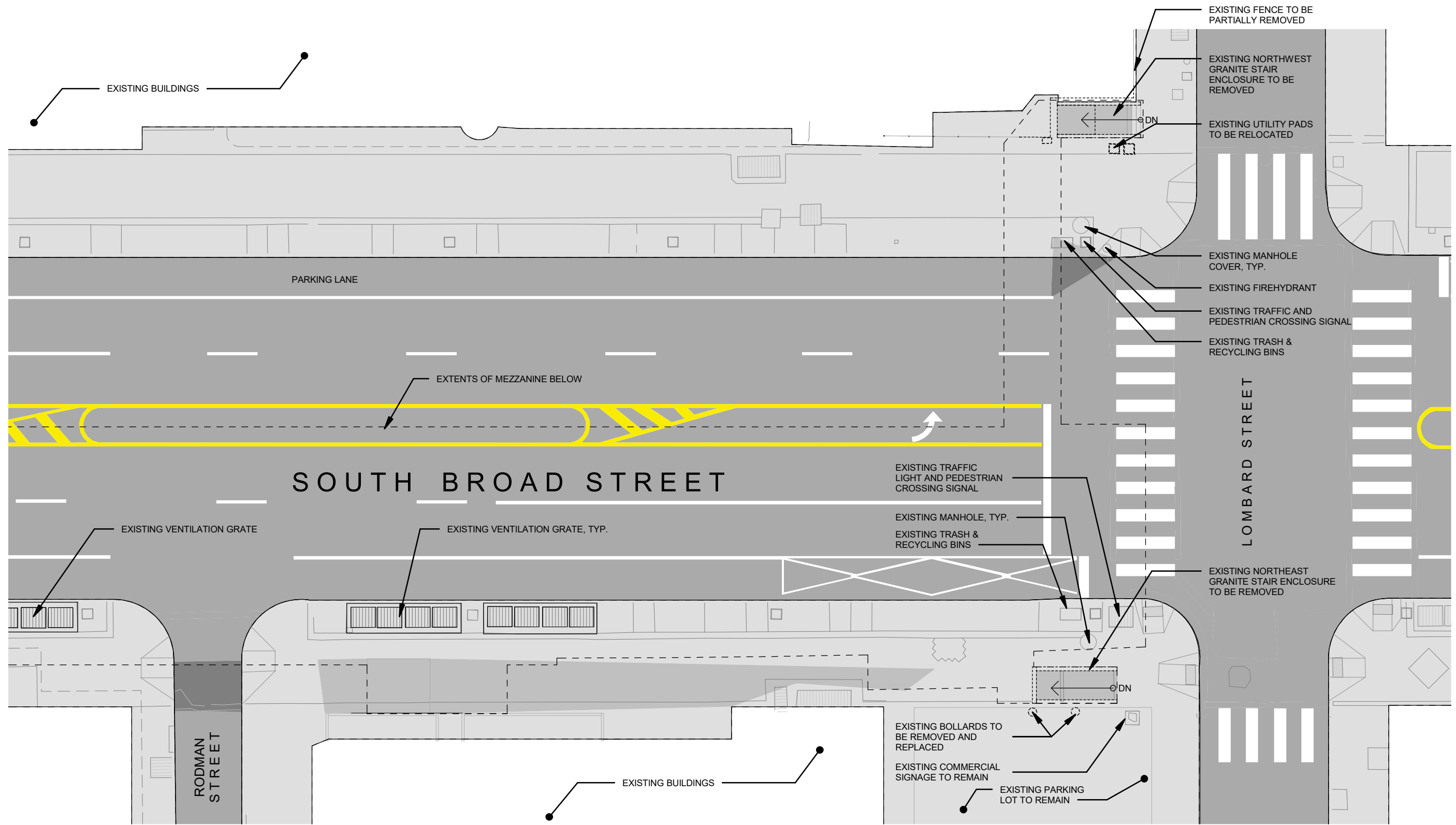


EXISTING STREET LEVEL PLAN - SOUTH

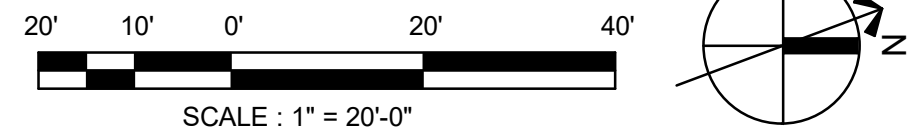
LOMBARD-SOUTH STATION

JUNE 25, 2024

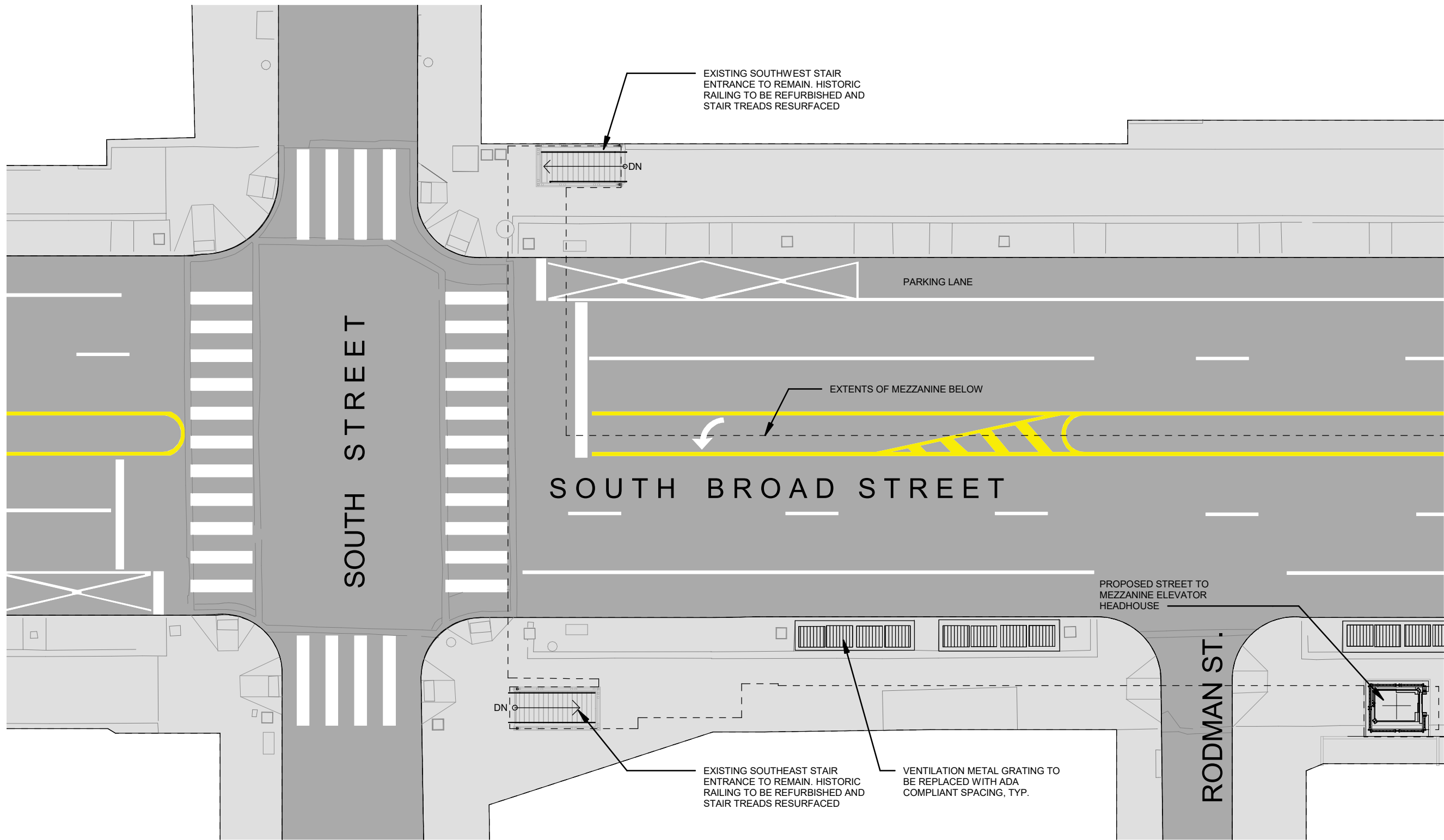
A-03



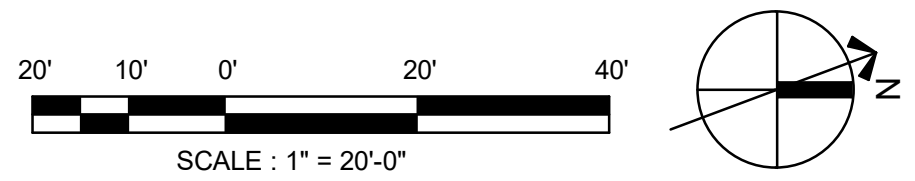
1 EXISTING STREET LEVEL PLAN - NORTH
 A-04 SCALE: 1" = 20'-0"



EXISTING STREET LEVEL PLAN - NORTH
LOMBARD-SOUTH STATION
 JUNE 25, 2024
 A-04



1 PROPOSED STREET LEVEL PLAN - SOUTH
 A-05 SCALE: 1" = 20'-0"

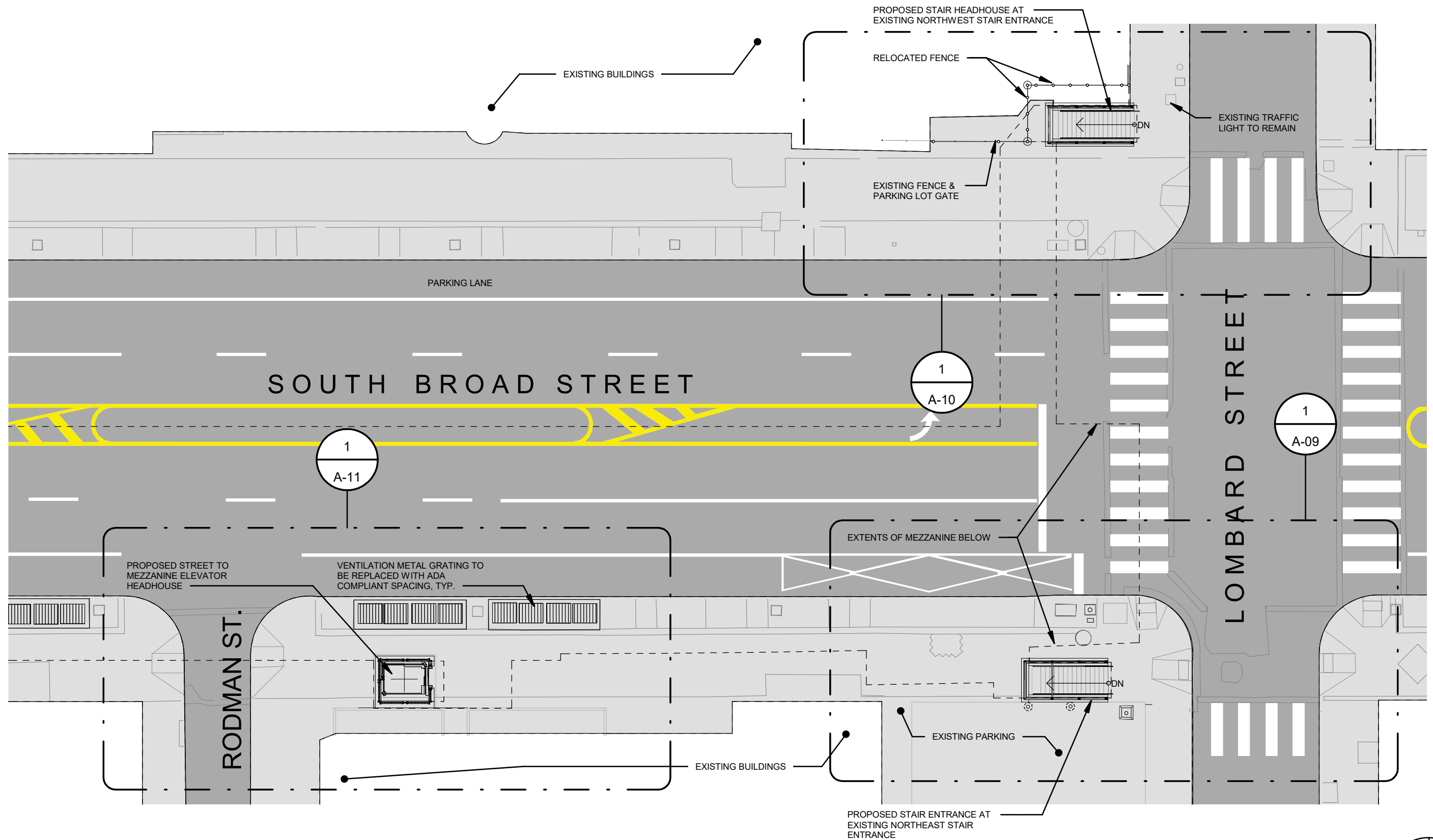


PROPOSED STREET LEVEL PLAN - SOUTH

LOMBARD-SOUTH STATION

JUNE 25, 2024

A-05



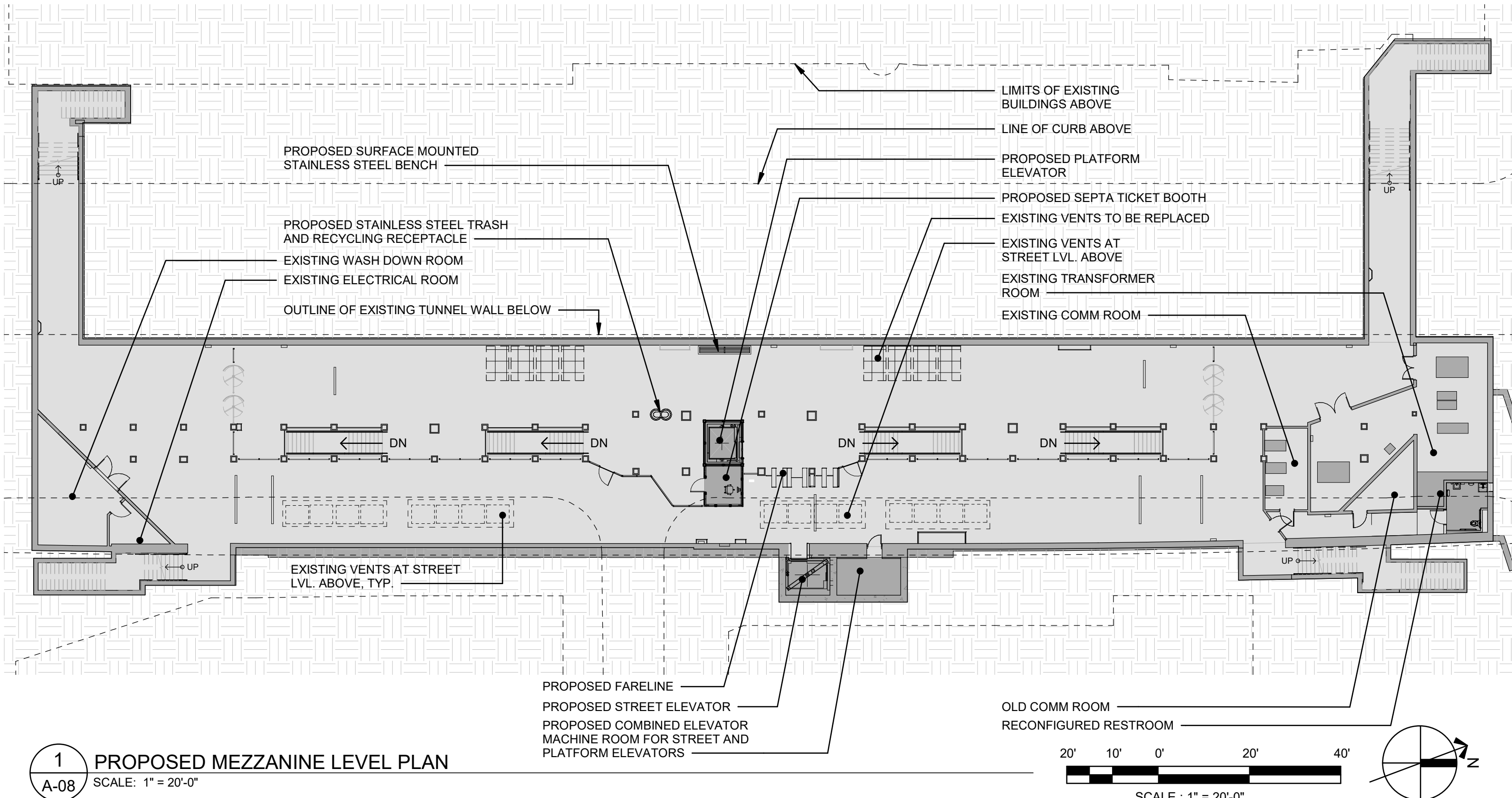
1 PROPOSED STREET LEVEL PLAN - NORTH
A-06 SCALE: 1" = 20'-0"

PROPOSED STREET LEVEL PLAN - NORTH

LOMBARD-SOUTH STATION

JUNE 25, 2024

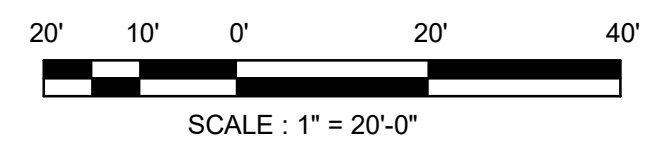
A-06



1 PROPOSED MEZZANINE LEVEL PLAN
 A-08 SCALE: 1" = 20'-0"

PROPOSED FARELINE
 PROPOSED STREET ELEVATOR
 PROPOSED COMBINED ELEVATOR
 MACHINE ROOM FOR STREET AND
 PLATFORM ELEVATORS

OLD COMM ROOM
 RECONFIGURED RESTROOM

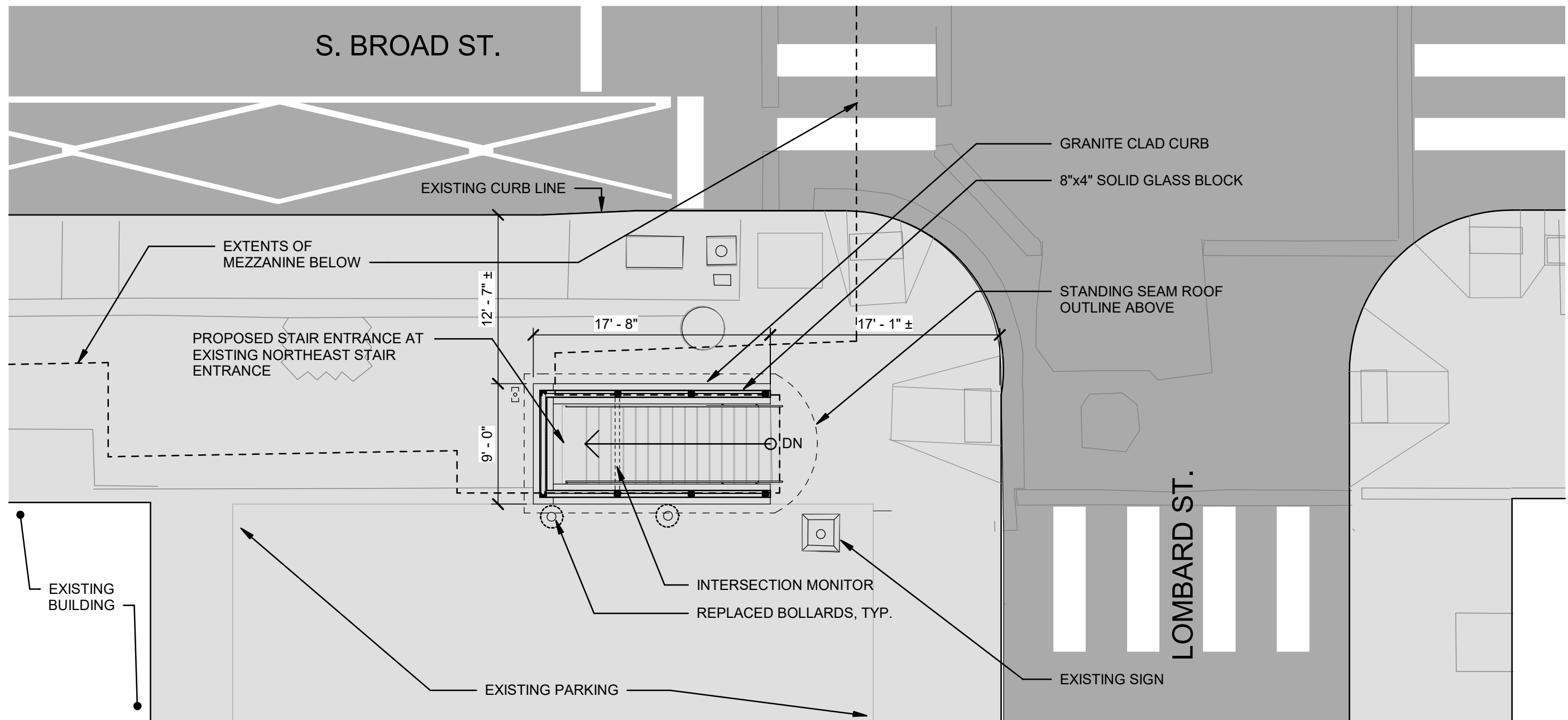


PROPOSED MEZZANINE LEVEL PLAN

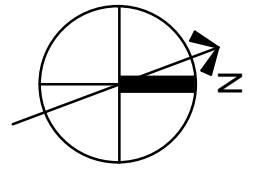
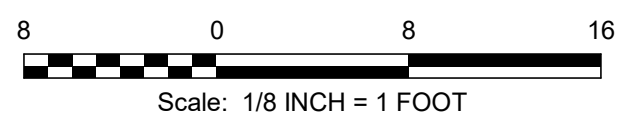
LOMBARD-SOUTH STATION

JUNE 25, 2024

A-08



1 ENLARGED NORTHEAST CORNER HEADHOUSE - STREET LEVEL PLAN
 A-09 SCALE: 1/8" = 1'-0"

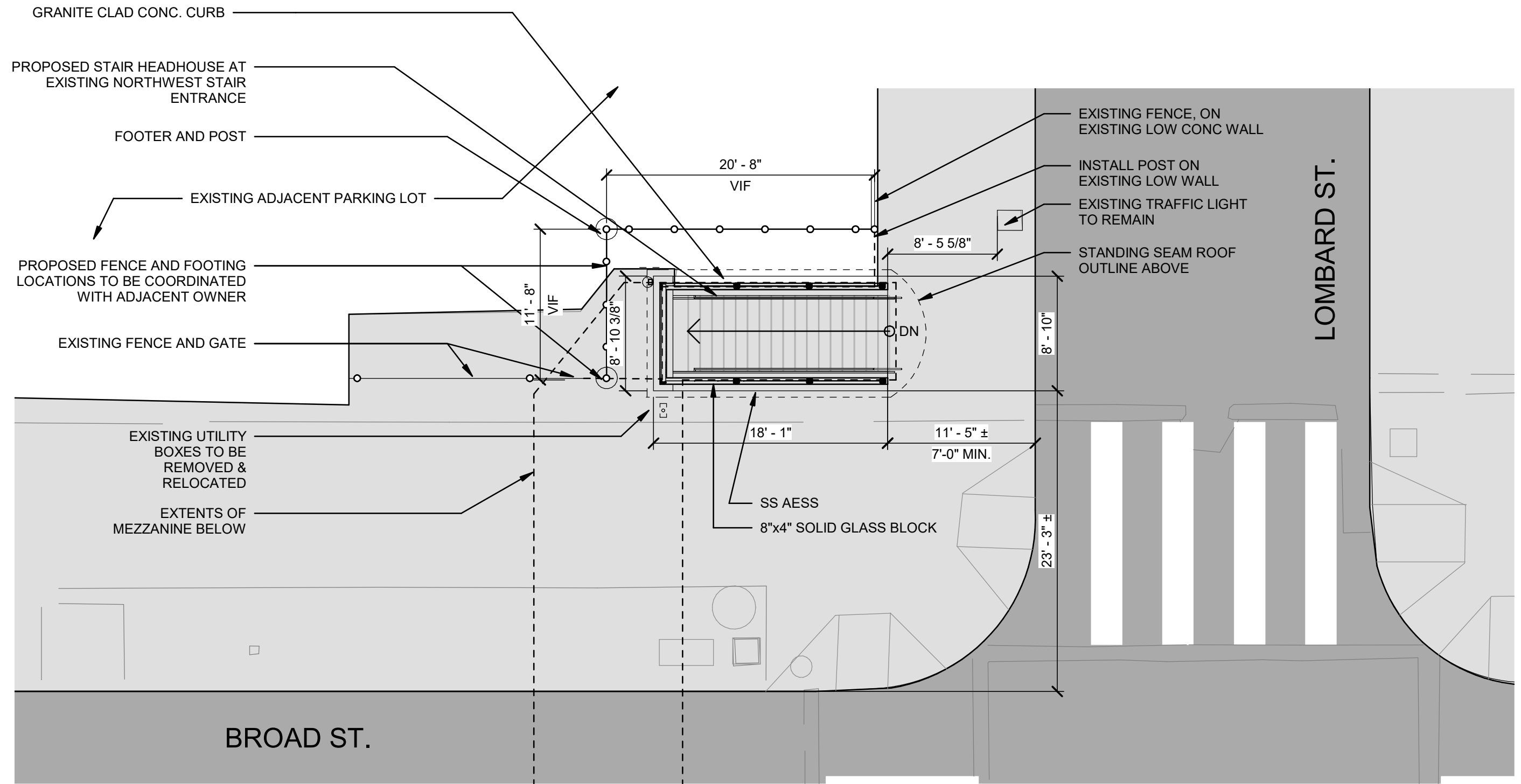


ENLARGED PLAN NE CORNER HEADHOUSE

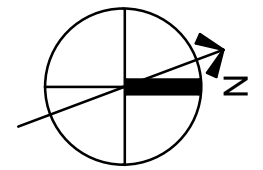
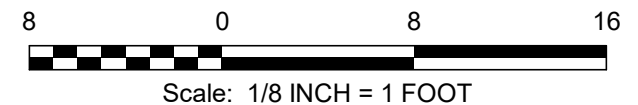
LOMBARD-SOUTH STATION

JUNE 25, 2024

A-09



1 ENLARGED NORTHWEST CORNER HEADHOUSE - STREET LEVEL PLAN VIEW
 A-10 SCALE: 1/8" = 1'-0"

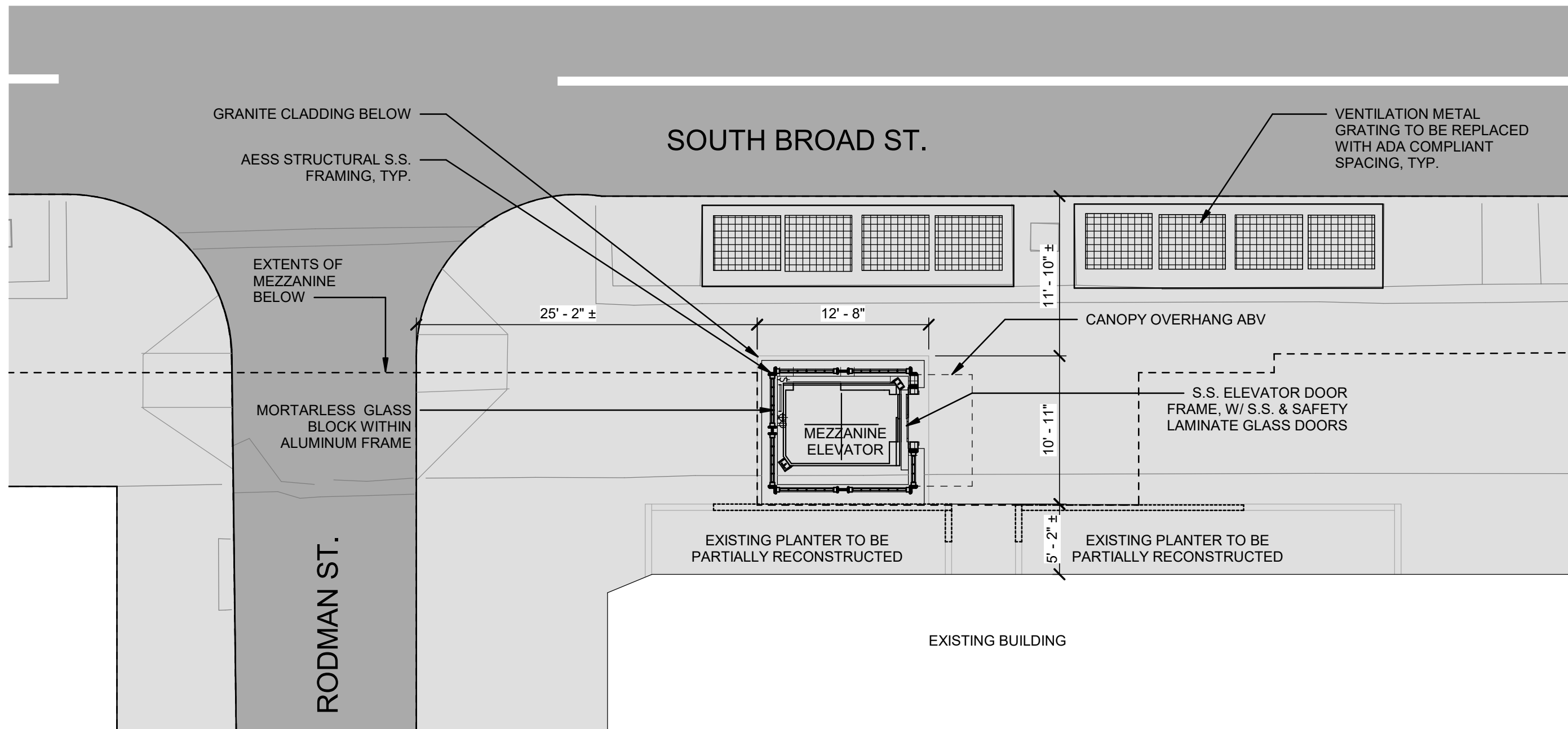


ENLARGED PLAN NW CORNER HEADHOUSE

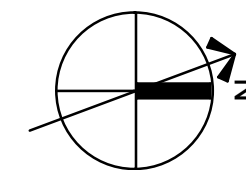
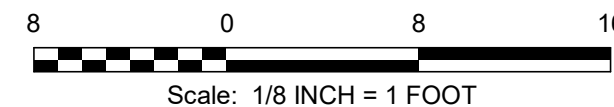
LOMBARD-SOUTH STATION

JUNE 25, 2024

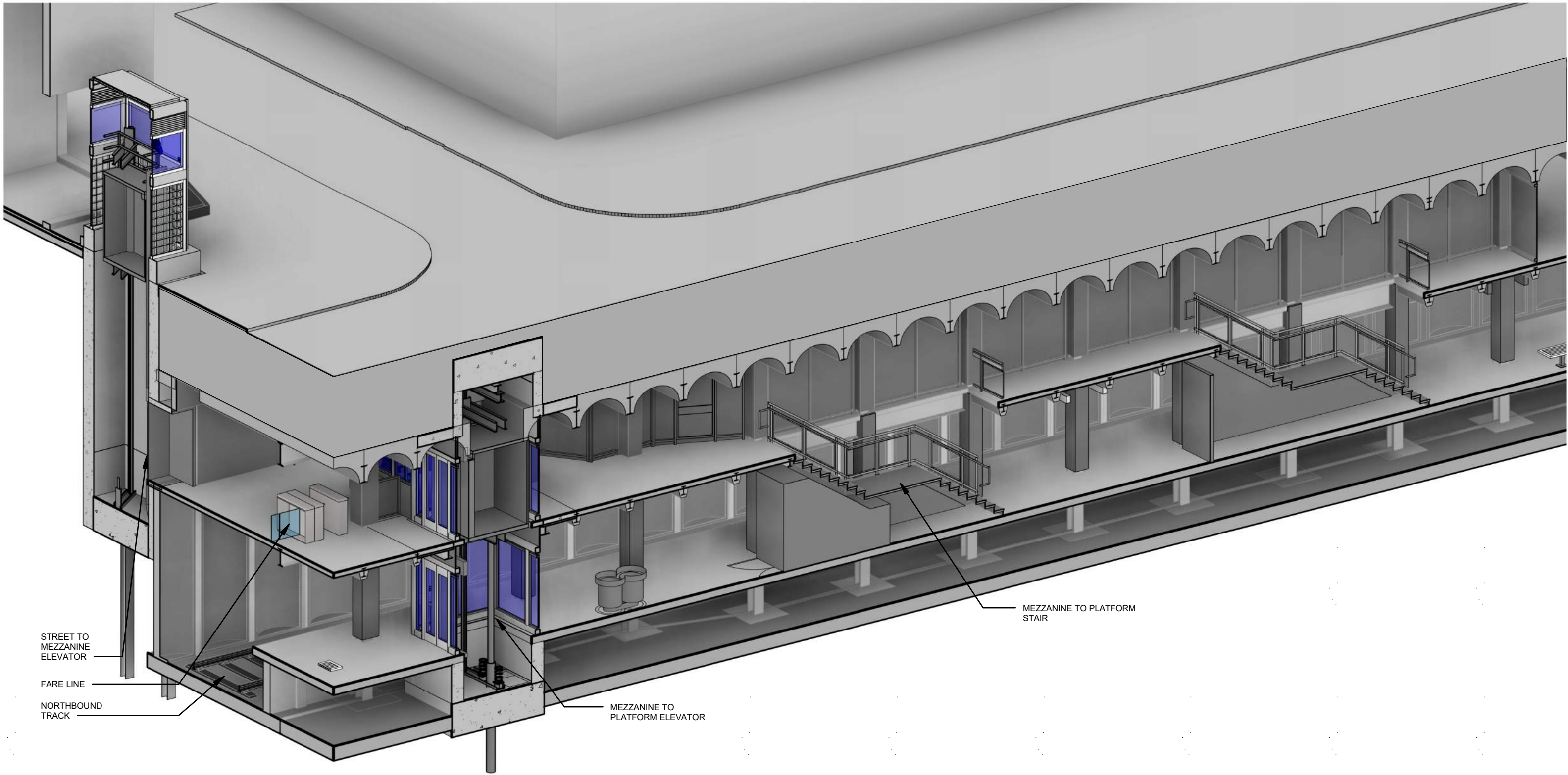
A-10



1 ENLARGED ELEVATOR HEADHOUSE - STREET LEVEL PLAN
 A-11 SCALE: 1/8" = 1'-0"



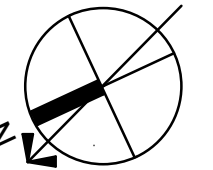
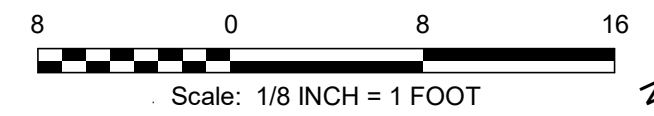
ENLARGED PLAN ELEVATOR HEADHOUSE
 LOMBARD-SOUTH STATION
 JUNE 25, 2024
 A-11



1
A-12

AXONOMETRIC SECTION THROUGH ELEVATORS

SCALE:



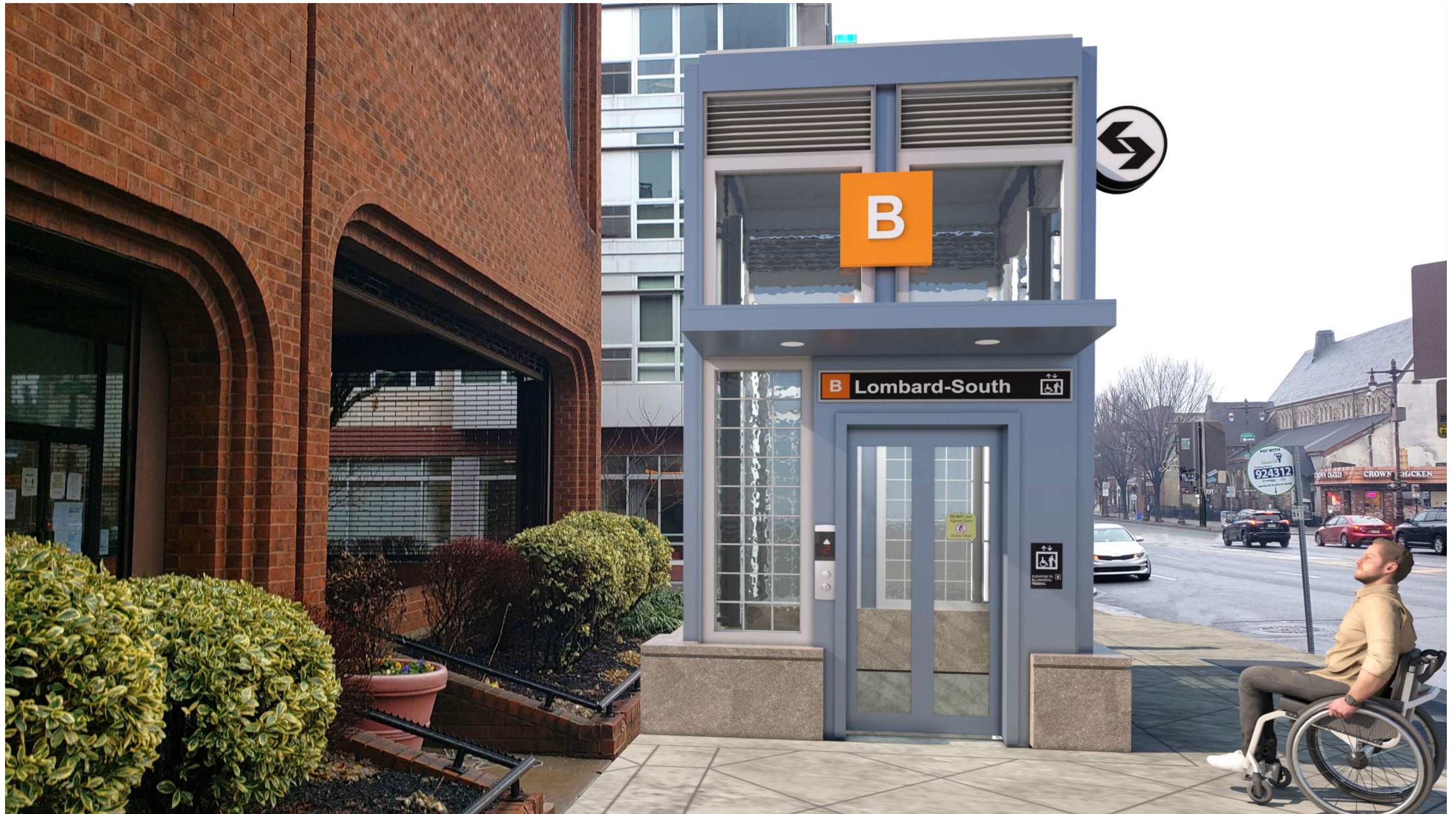
AXONOMETRIC SECTION THROUGH ELEVATORS

LOMBARD-SOUTH STATION

JUNE 25, 2024

A-12





1 STREET ELEVATOR APPROACH FROM LOMBARD STREET LOOKING SOUTH
A-13 SCALE: 12" = 1'-0"

PROPOSED PERSPECTIVE 1 - LOOKING SOUTH - OPTION 1 WITH PLANTERS REBUILT



1 STREET ELEVATOR APPROACH FROM LOMBARD STREET LOOKING SOUTH
A-13a SCALE: 12" = 1'-0"

PROPOSED PERSPECTIVE 1 - LOOKING SOUTH - OPTION 2 WITH PLANTERS REBUILT



1 STREET ELEVATOR APPROACH FROM LOMBARD STREET LOOKING SOUTH
A-13b SCALE: 12" = 1'-0"

PROPOSED PERSPECTIVE 1 - LOOKING SOUTH - AT NIGHT

LOMBARD-SOUTH STATION

JUNE 25, 2024

A-13b



1 STREET ELEVATOR APPROACH FROM SOUTH STREET LOOKING NORTHEAST
A-14 SCALE: 12" = 1'-0"

PROPOSED PERSPECTIVE 2 - LOOKING NORTHEAST - OPTION 1 WITH PLANTERS REBUILT



1 STREET ELEVATOR APPROACH FROM SOUTH STREET LOOKING NORTHEAST
A-14a 12" = 1'-0"

PROPOSED PERSPECTIVE 2 - LOOKING NORTHEAST - OPTION 2 WITH PLANTERS REMOVED

LOMBARD-SOUTH STATION

JUNE 25, 2024

A-14a



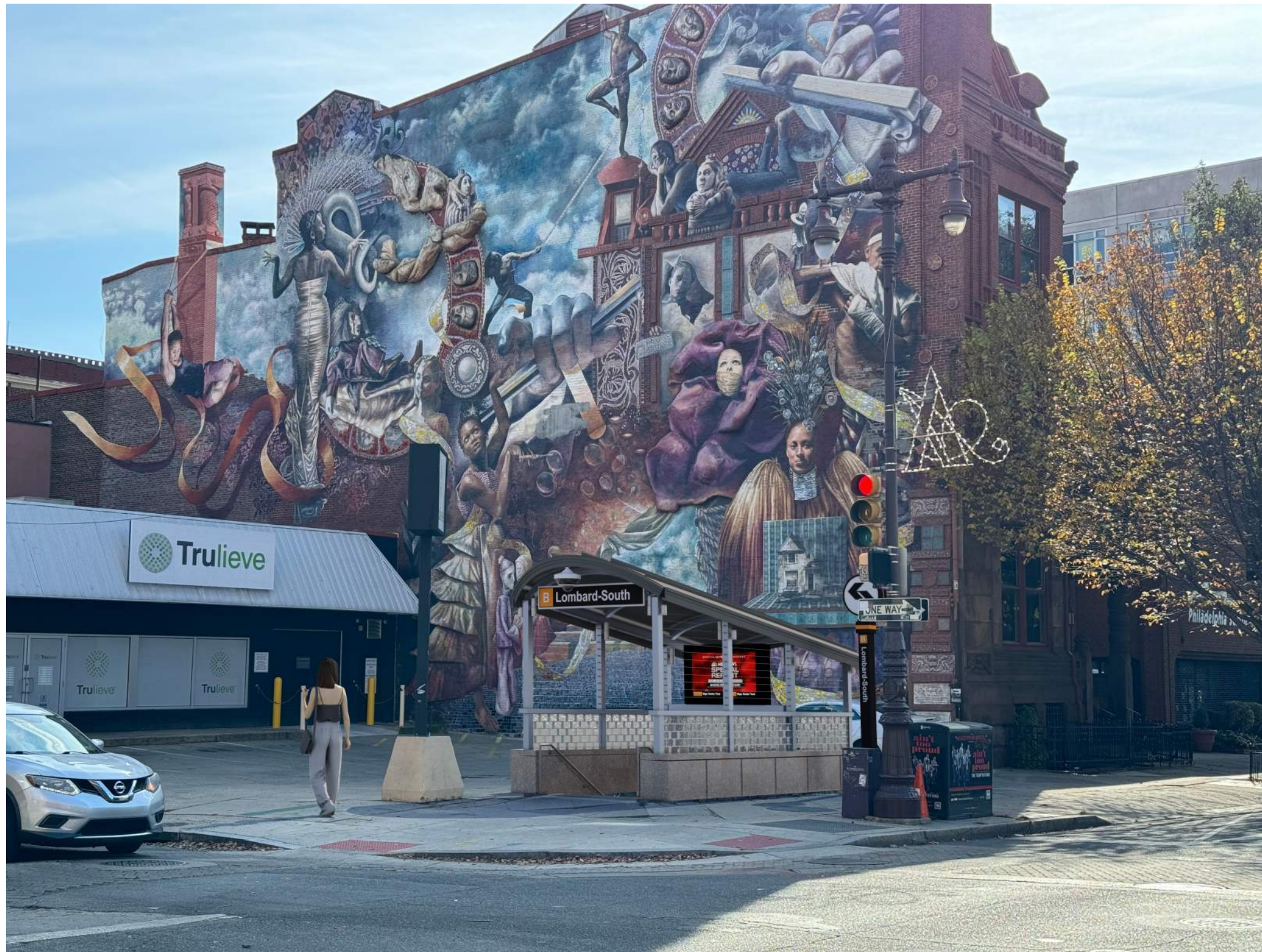
1 NW CORNER STAIR APPROACH FROM LOMBARD STREET LOOKING SOUTHWEST
A-15 SCALE: 12" = 1'-0"

PROPOSED PERSPECTIVE 3 - LOOKING SW

LOMBARD-SOUTH STATION

JUNE 25, 2024

A-15



1 NE CORNER STAIR APPROACH FROM LOMBARD STREET LOOKING SOUTHEAST
A-16 SCALE: 12" = 1'-0"

PROPOSED PERSPECTIVE 4 - LOOKING SOUTHEAST

LOMBARD-SOUTH STATION

JUNE 25, 2024

A-16



1 NE CORNER STAIR APPROACH FROM LOMBARD STREET LOOKING SOUTHEAST
A-16a SCALE: 12" = 1'-0"

PROPOSED PERSPECTIVE 4 - LOOKING SOUTHEAST - AT NIGHT

LOMBARD-SOUTH STATION

JUNE 25, 2024

A-16a



1 PLATFORM ELEVATOR APPROACH FROM NORTH MEZZANINE LOOKING SOUTHEAST
A-17 SCALE: 12" = 1'-0"

PROPOSED PERSPECTIVE 5 - LOOKING SOUTHEAST

LOMBARD-SOUTH STATION

JUNE 25, 2024

A-17



1 PLATFORM ELEVATOR APPROACH FROM NORTH PLATFORM LOOKING SOUTH
A-18 SCALE: 12" = 1'-0"

PROPOSED PERSPECTIVE 6 - LOOKING SOUTH

LOMBARD-SOUTH STATION

JUNE 25, 2024

A-18



1 NORTH MEZZANINE APPROACH FROM FARE GATE LOOKING NORTHWEST
A-19 SCALE: 12" = 1'-0"

PROPOSED PERSPECTIVE 7 - LOOKING NW

LOMBARD-SOUTH STATION

JUNE 25, 2024

A-19



1 SOUTH MEZZANINE APPROACH FROM SW CORNER STAIR LOOKING NORTH
A-20 SCALE: 12" = 1'-0"

PROPOSED PERSPECTIVE 8 - LOOKING NORTH

LOMBARD-SOUTH STATION

JUNE 25, 2024

A-20



1 PLATFORM STAIR, LOOKING NORTH
A-21 SCALE: 12" = 1'-0"

PROPOSED PERSPECTIVE 9 - LOOKING NORTH

LOMBARD-SOUTH STATION

JUNE 25, 2024

A-21



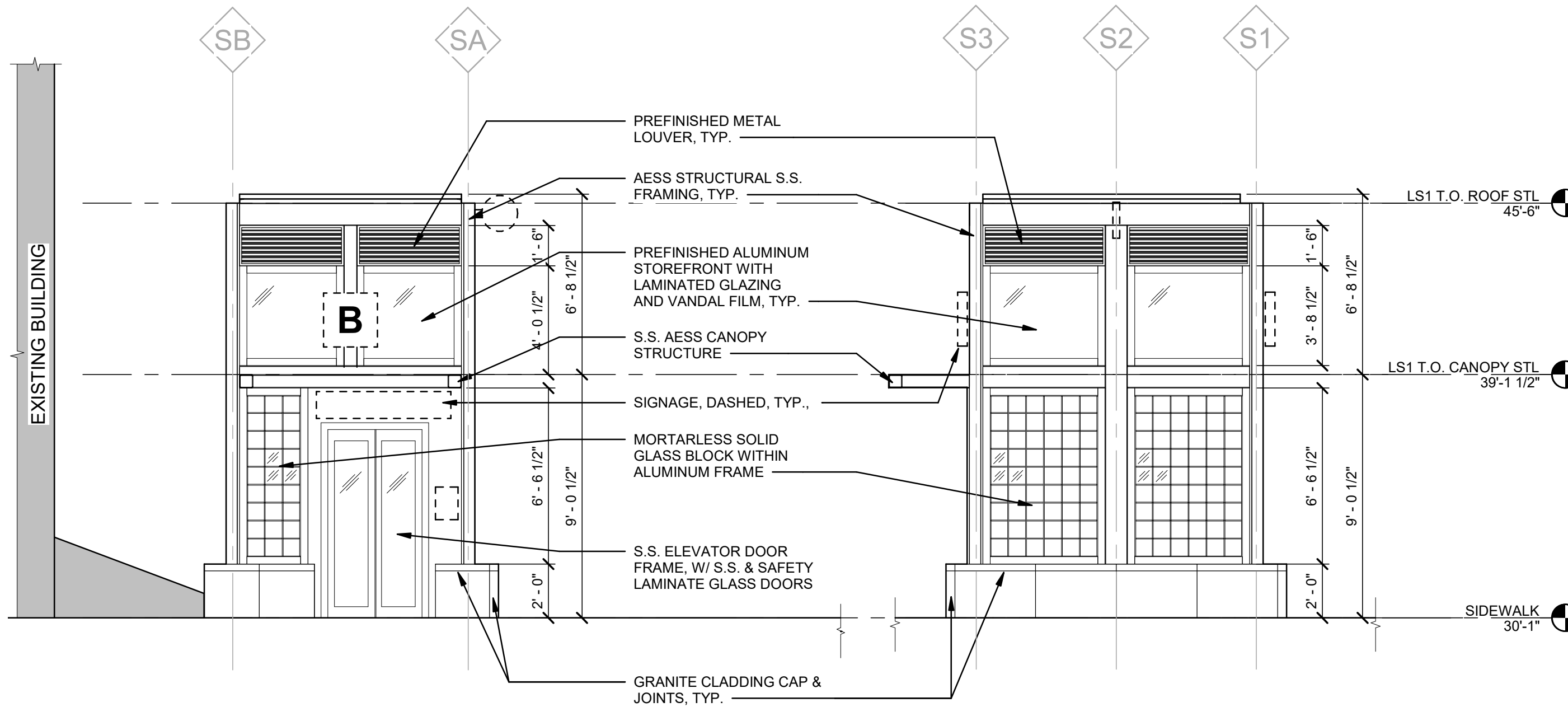
1 PLATFORM, LOOKING NORTH
A-22 SCALE: 12" = 1'-0"

PROPOSED PERSPECTIVE 10 - LOOKING NORTH

LOMBARD-SOUTH STATION

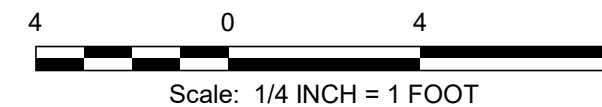
JUNE 25, 2024

A-22



1 STREET ELEVATOR - NORTH ELEVATION
A-23 SCALE: 1/4" = 1'-0"

2 STREET ELEVATOR - WEST ELEVATION
A-23 SCALE: 1/4" = 1'-0"

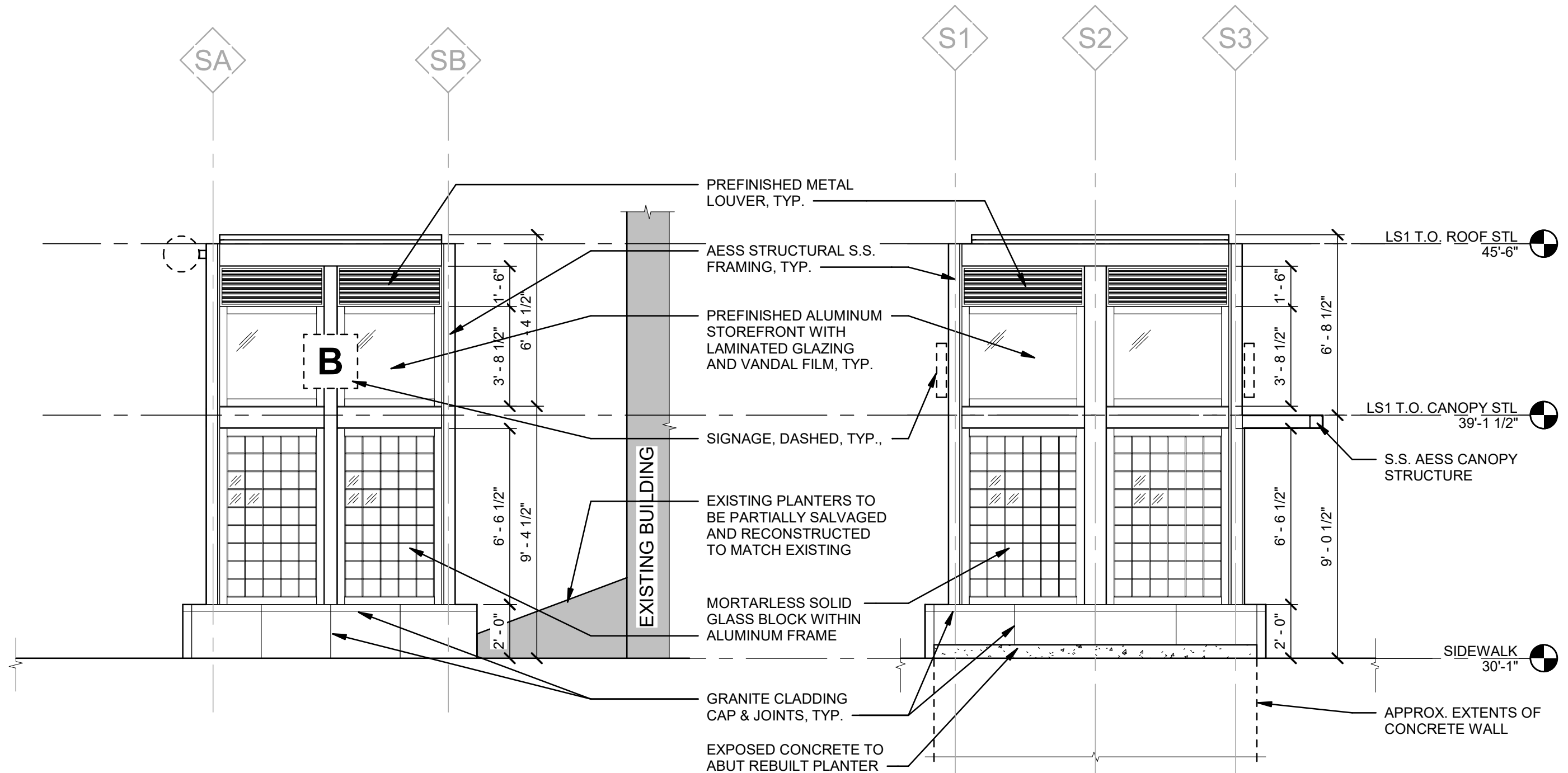


ELEVATOR HEADHOUSE ELEVATIONS 1

LOMBARD-SOUTH STATION

JUNE 25, 2024

A-23



1 STREET ELEVATOR - SOUTH ELEVATION
 A-24 SCALE: 1/4" = 1'-0"

2 STREET ELEVATOR - EAST ELEVATION
 A-24 SCALE: 1/4" = 1'-0"

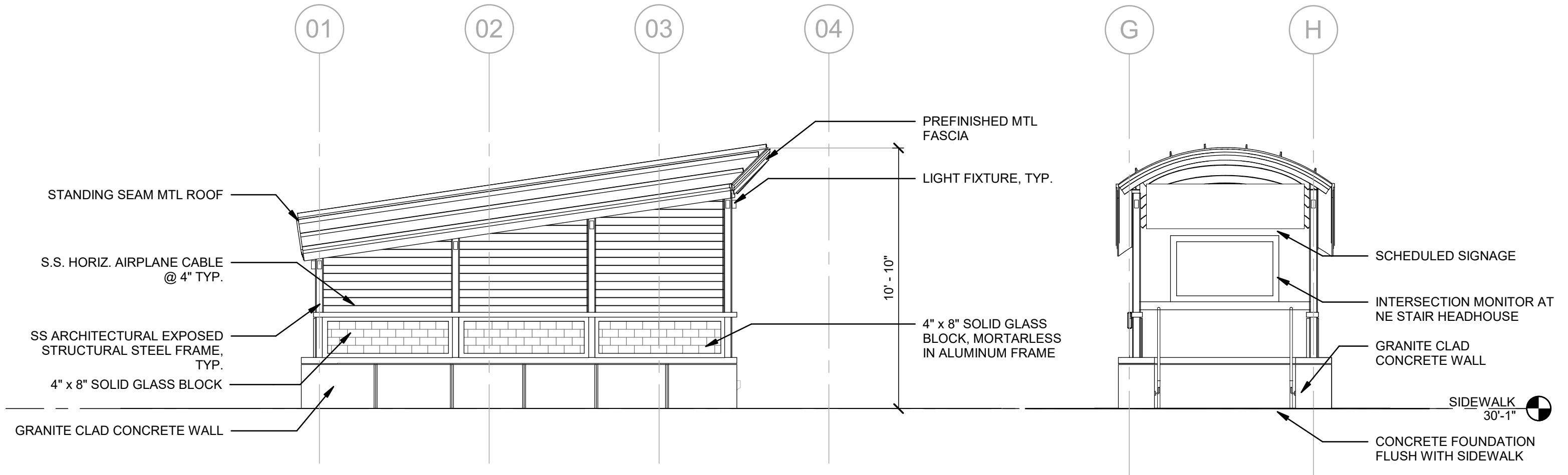


ELEVATOR HEADHOUSE ELEVATIONS 2

LOMBARD-SOUTH STATION

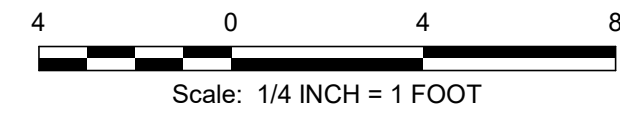
JUNE 25, 2024

A-24



3 STAIR HEADHOUSE - TYP. EAST ELEVATION
 A-25 SCALE: 1/4" = 1'-0"

1 STAIR HEADHOUSE - TYP. NORTH ELEVATION
 A-25 SCALE: 1/4" = 1'-0"

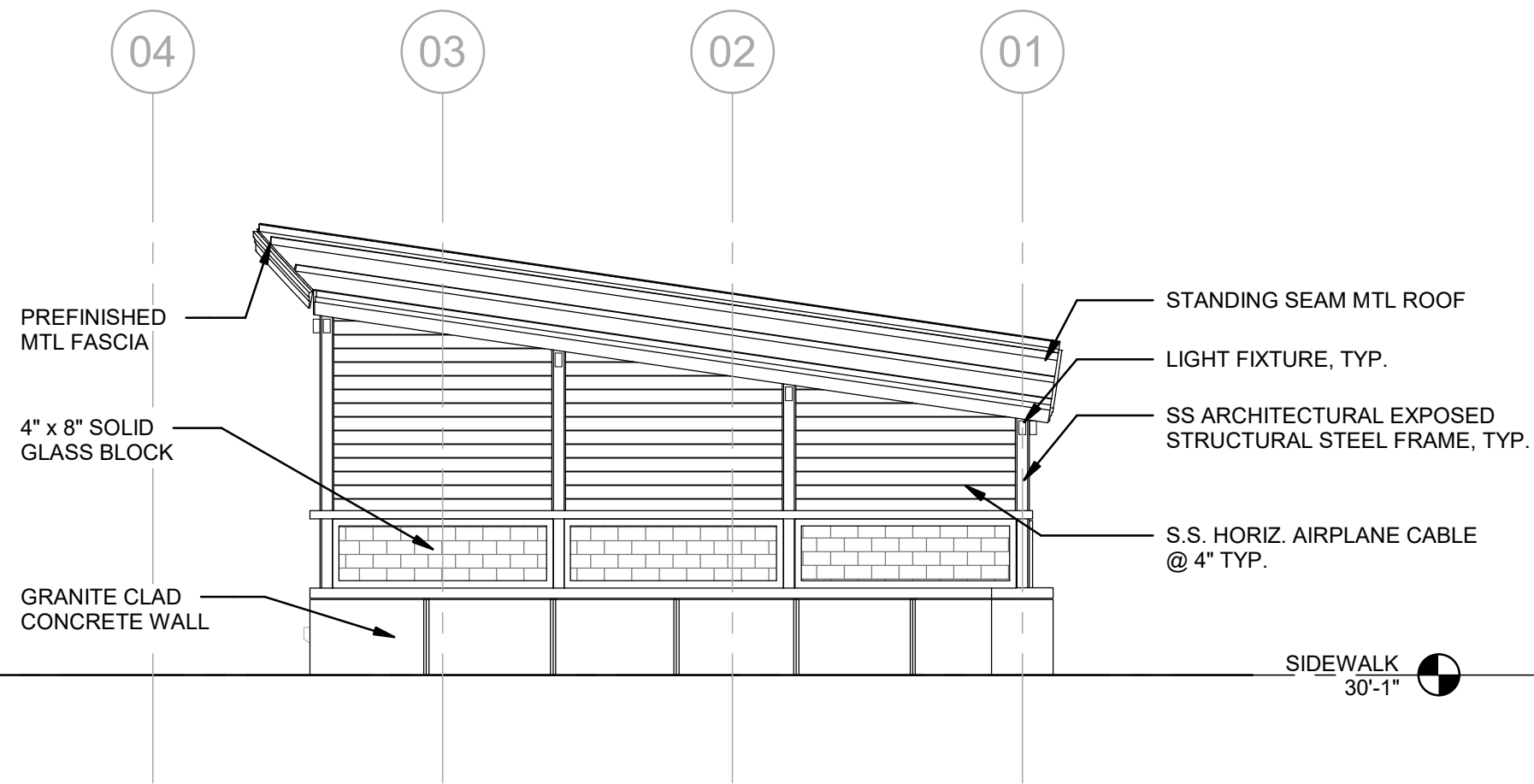


STAIR HEADHOUSE TYPICAL ELEVATIONS 1

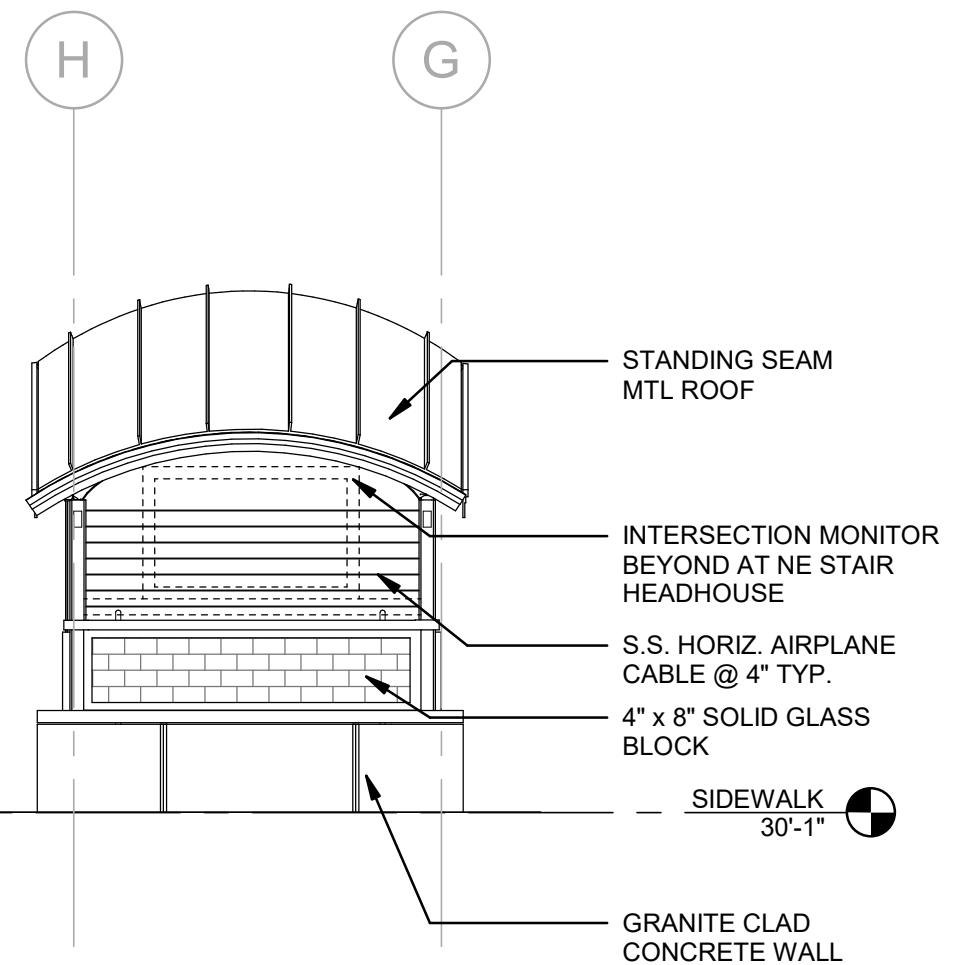
LOMBARD-SOUTH STATION

JUNE 25, 2024

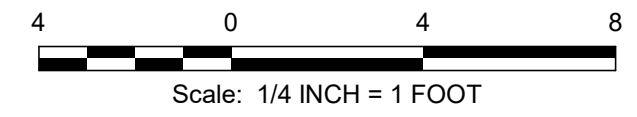
A-25



1 STAIR HEADHOUSE - TYP. WEST ELEVATION
 A-26 SCALE: 1/4" = 1'-0"



2 STAIR HEADHOUSE - TYP. SOUTH ELEVATION
 A-26 SCALE: 1/4" = 1'-0"

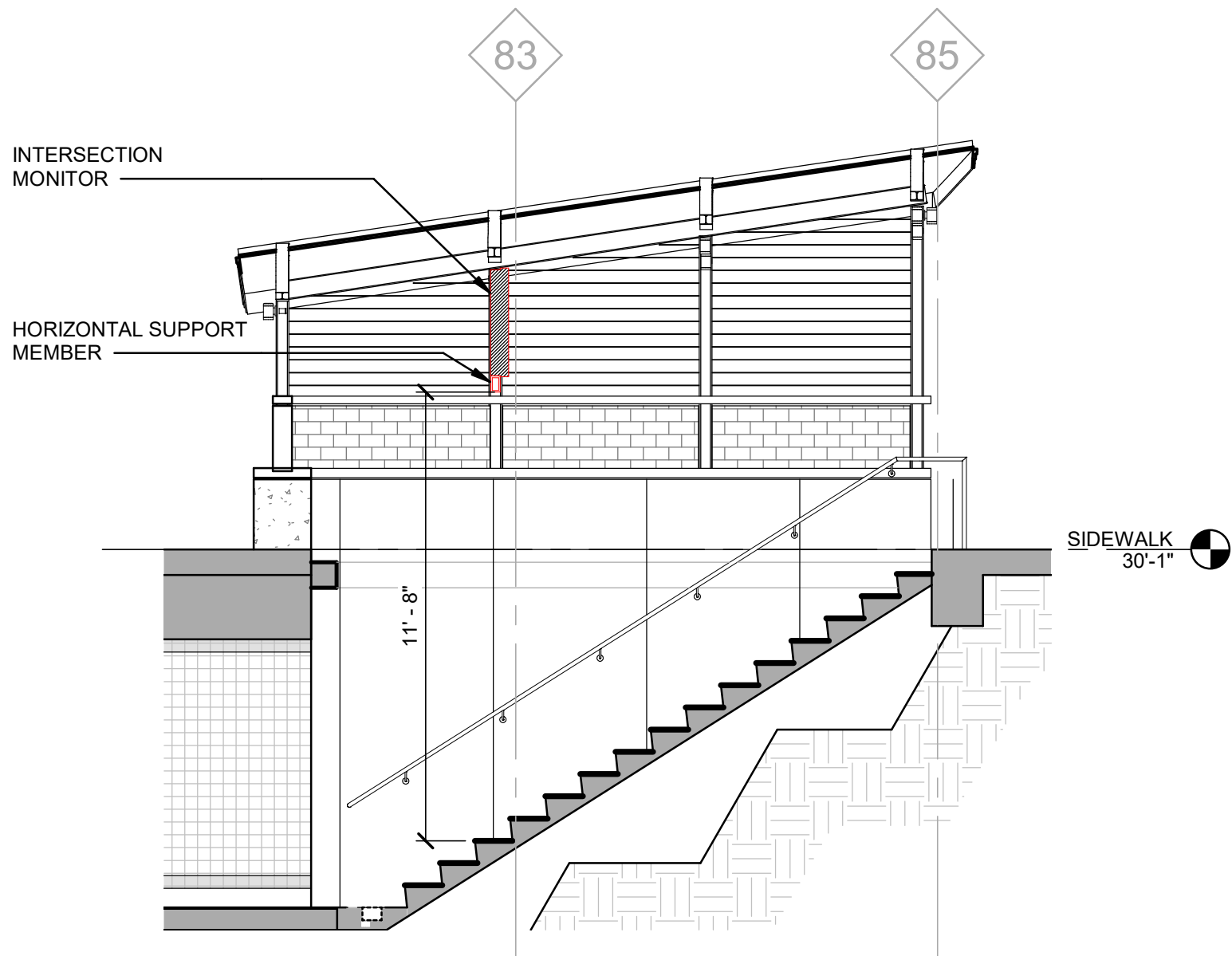


STAIR HEADHOUSE TYPICAL ELEVATIONS 2

LOMBARD-SOUTH STATION

JUNE 25, 2024

A-26



1 NE STAIR SECTION - INTERSECTION MONITOR
 A-26 a SCALE: 1/4" = 1'-0"

INTERSECTION MONITOR - NE STAIR HEADHOUSE

LOMBARD-SOUTH STATION

JUNE 25, 2024

A-26 a



1 PERSPECTIVE OF EXISTING NW STAIR LOOKING SW
A-27



2 PERSPECTIVE OF EXISTING NE STAIR LOOKING SE
A-27

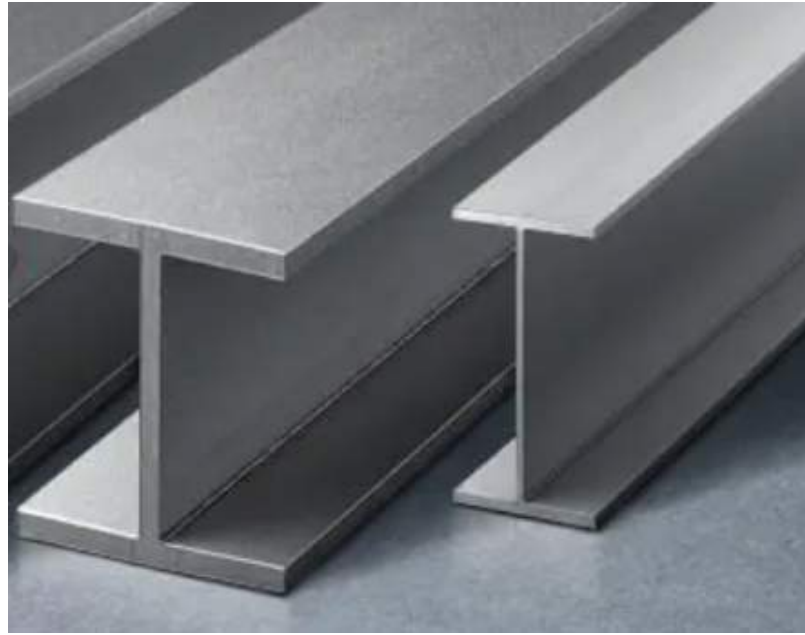


3 PERSPECTIVE OF EXISTING SENIOR CENTER LOOKING NE
A-27



4 PERSPECTIVE OF EXISTING SENIOR CENTER LOOKING SOUTH
A-27

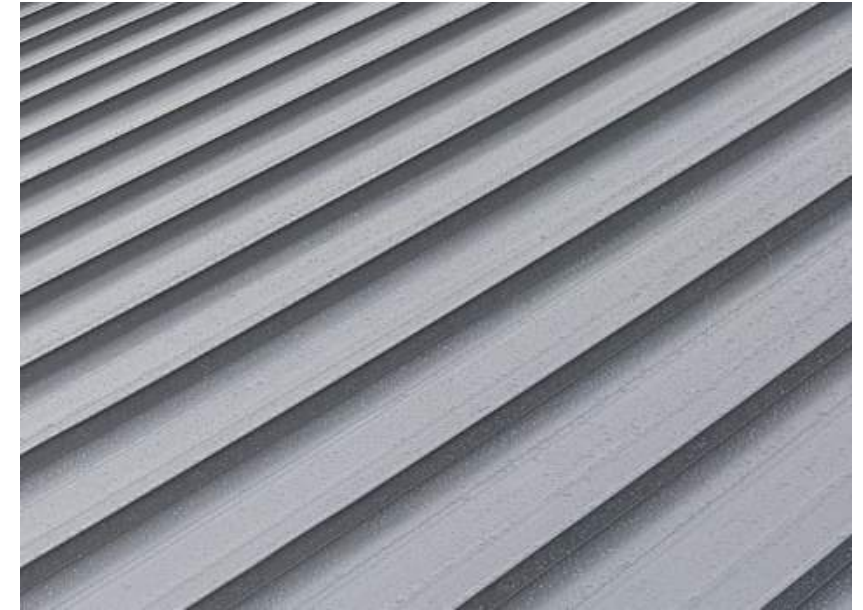
EXISTING PERSPECTIVES
LOMBARD-SOUTH STATION
JUNE 25, 2024
A-27



STAINLESS STEEL



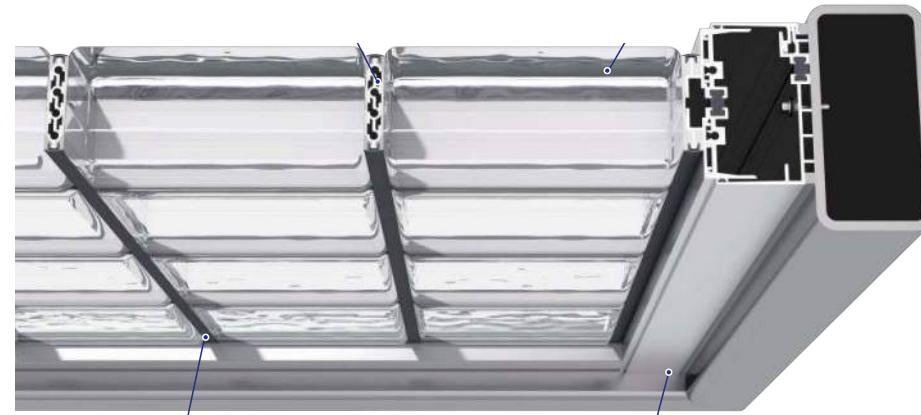
SS AIRCRAFT CABLE



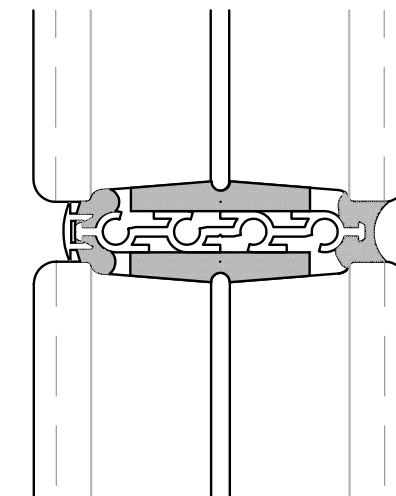
STANDING SEAM ROOF



GRANITE - MATCH EXISTING



**MORTARLESS
GLASS BLOCKS 8x8**



**MORTARLESS
GLASS BLOCKS 4x8**

MATERIALS PALETTE
LOMBARD-SOUTH STATION

JUNE 25, 2024

A-28