

June 26, 2024

Alex Smith  
Philadelphia Art Commission  
City of Philadelphia  
1515 Arch Street  
Philadelphia PA 19102

RE: SEPTA South Broad ADA Improvements – Ellsworth-Federal Station – Revised Per 4/10/24 Comments

Dear Alex,

Jacobs has been contracted by SEPTA to provide architectural design and engineering services at the Ellsworth-Federal station on South Broad Street to improve ADA accessibility. On behalf of SEPTA, Jacobs respectfully requests the Art Commission's review of the revised submission for SEPTA's Ellsworth-Federal Station ADA Improvements Project. This updated submission addresses comments provided by the Art Commission at the previous April 10, 2024, meeting and includes the following station and location:

- **Ellsworth-Federal**  
1200 S Broad Street,  
Philadelphia, PA

See previous cover letter of package dated 3/22/24 for an overview of the project including ADA interventions and materials that remain mostly unchanged. The following paragraphs describe updates to the design since the previous submission.

### **Lighting Fixture Types - Elevator**

See provided night rendering on sheet A-14a. In compliance with SEPTA's standard lighting for Elevator Headhouses at adjacent stations, LED strip lights will be provided inside the hoistway, along the vertical steel elements at the edges of the solid glass block. The illumination will emit through the glass block making a lantern-type effect above the sidewalk. Downlights in the canopy over the elevator entrance provide additional illumination of the sidewalk surface. SEPTA's latest signage standards include illuminated lighting mounted on several sides of the hoistway, which provide help to orient the public users during night hours.

### **Lighting Fixture Types – Stairs**

See provided night rendering on sheet A-16a. The design has been revised to include several wall mounted up and down light fixtures affixed to both the inner and outer faces of each of the steel posts supporting the new stair canopy at the NW & NE stairs. There will also be a linear light provided to illuminate the sign above the stair entrance.

### **Security Gate**

At all four stairs, each security gate will be replaced with a new stainless steel gate on the intermediate landing, (in their current locations) just below the sidewalk. SEPTA's standards require a single leaf gate, which will not be feasible at the sidewalk level at the two new canopies (NW + NE). If placed at the

sidewalk, the gate must swing in towards the stair and the headhouse canopy length would grow too long and obstruct clear required widths and access paths on the sidewalk. If the gate swung out, there would be no feasible way to secure the gate open and not obstruct adjacent areas of sidewalk. With the relocation of the gate on the NE stair down to the intermediate landing, the canopy structure length has been reduced by roughly 5'-0", see revised A-10.

## **NW Stair Headhouse – Historic Signpost**

See updated rendering on sheet A-16 which now includes the historic signpost integral to the existing historic guard rail. The signpost and guardrail will be salvaged, refurbished, and reinstalled. To avoid visual obstruction of the historic sign, the corner of the canopy has been cantilevered, with post removed. Posts are moved outward of the historic guardrail on the east side, while the posts on the west side terminate to a horizontal stainless steel member above the guardrail. This asymmetry is required due to the tight proximity of the adjacent building property line and overhang.

## **Granite – To Match Existing**

See updated materials palette on sheet A-28. The granite color and pattern has been revised to match existing.

## **Downspout Removed**

As discussed per related similar comment on Lombard-South, downspouts have been removed at stair NE & NW Stair canopies. See revised Sheets A-23, A-24, A-25, A-26.

Please feel free to contact me with any questions about the project in advance to the next meeting on July 10<sup>th</sup>. We look forward to discussing the project with the Philadelphia Art Commission.

Sincerely,

**Brian J. Fitzhenry, PE**

*Senior Project Manager – Rail Buildings & Structures*

1-215-514-8957

Brian.Fitzhenry@jacobs.com

## **Jacobs**

Two Commerce Square

2001 Market St, Suite 900

Philadelphia, PA 19103

CC: John McElwee, SEPTA  
Sean McMahon, PMP, SEPTA  
Victoria Lupica, SEPTA  
Julia Guerrero, Civic-Centered  
Matt Morong, RA, Jacobs  
Fred Kaulbach, RA, Jacobs

## The Philadelphia Art Commission Decision Form

The Philadelphia Art Commission

*Established 1911*

Robert Roesch  
*Chair*

José Almiñana

Carmen Febo San Miguel

Deborah Cahill

Sarah McEneaney

Matthew Kenyatta

Raed Nasser

Pepón Osorio

Mario Zacharjasz

Alex M. Smith  
*Director*

**File #:** 96-24 **Commission Meeting Date:** 04/10/2024

**Name:** Brian Fitzhenry  
Jacobs  
Two Commerce Square, 2001 Market St., Suite 900  
Philadelphia, PA 19103

**Project Name & Location:** SEPTA ADA Improvements - Ellsworth-Federal Station  
S Broad St. & Ellsworth/Federal St.

**Proposal:** The proposal is for upgrades and ADA improvements to SEPTA's Ellsworth-Federal Station. One new elevator is planned to be built in front of the health department. This elevator will be built with a granite base, glass block, and metal panels. New headhouses will be built over the four stairway entrances. The headhouses will be made of granite bases, S.S. rods, and a metal roof. The southeast and southwest entrances are historic and will be restored. These will have new headhouses that complement the historic features.

**Commission Decision:** CONCEPT APPROVAL

**Remarks:** The Commissioners would like more information about the types of lighting that will be used, and more information about the security gate.



**Alex M. Smith**  
**Director of the Philadelphia Art Commission**

One Parkway Building  
1515 Arch Street  
13th Floor  
Philadelphia, PA 19102

215-683-4636  
artcommission@phila.gov

Art Commission approval is not an endorsement for any approval, exception or variance that the proposal might require from any other department, board or commission.



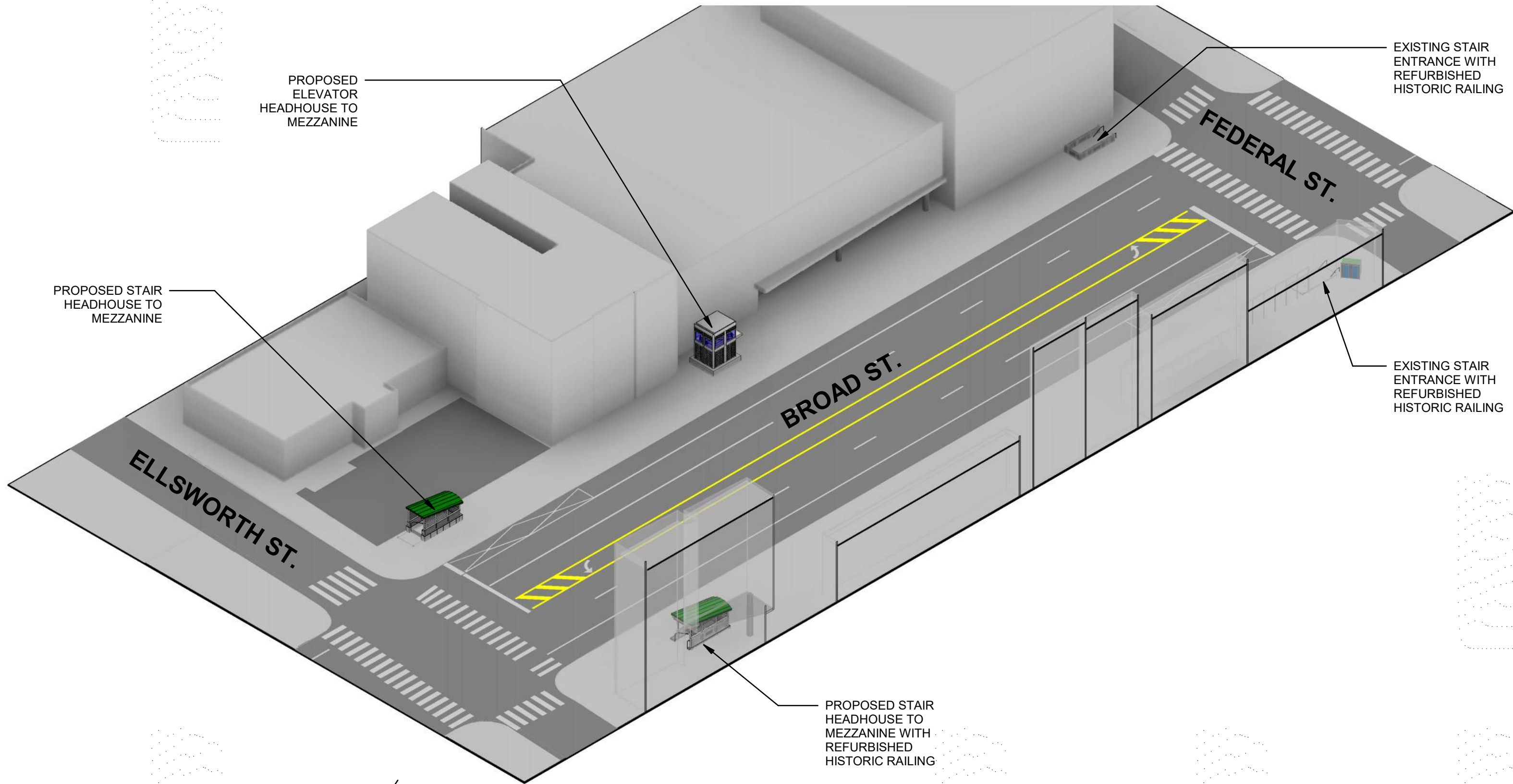
---

**ELLSWORTH-FEDERAL STATION  
ADA IMPROVEMENTS**

PHILADELPHIA ART COMMISSION PRESENTATION

---

**Jacobs**



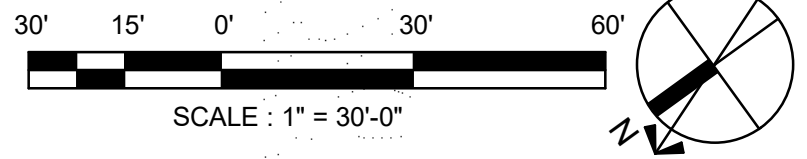
PROPOSED ELEVATOR HEADHOUSE TO MEZZANINE

PROPOSED STAIR HEADHOUSE TO MEZZANINE

EXISTING STAIR ENTRANCE WITH REFURBISHED HISTORIC RAILING

EXISTING STAIR ENTRANCE WITH REFURBISHED HISTORIC RAILING

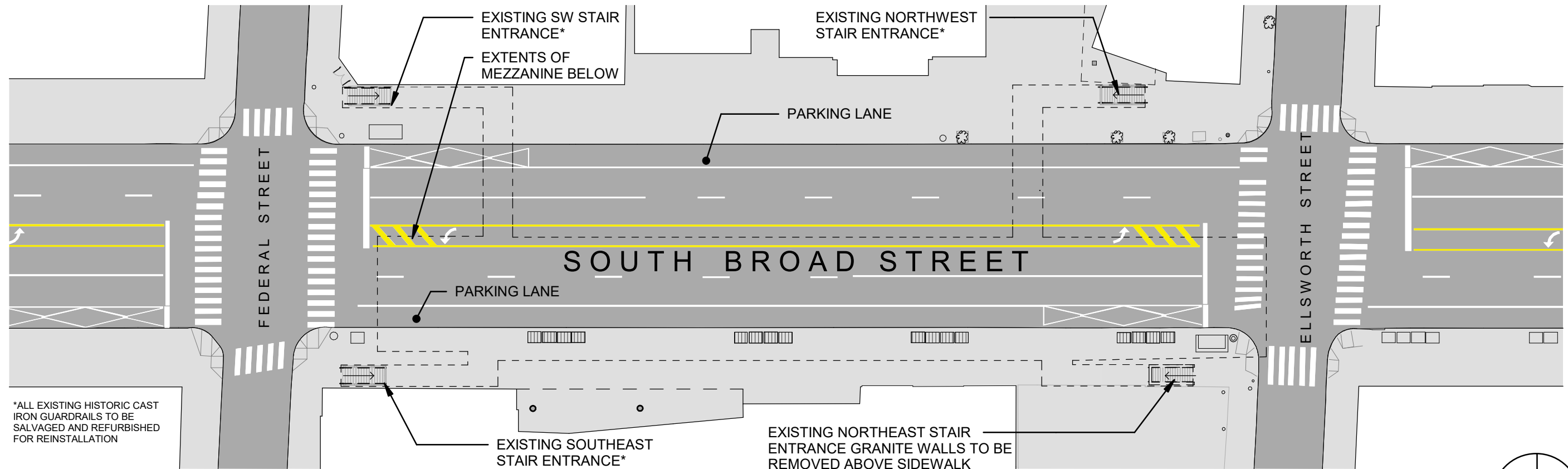
PROPOSED STAIR HEADHOUSE TO MEZZANINE WITH REFURBISHED HISTORIC RAILING



STREET LEVEL AXONOMETRIC  
**ELLSWORTH-FEDERAL STATION**

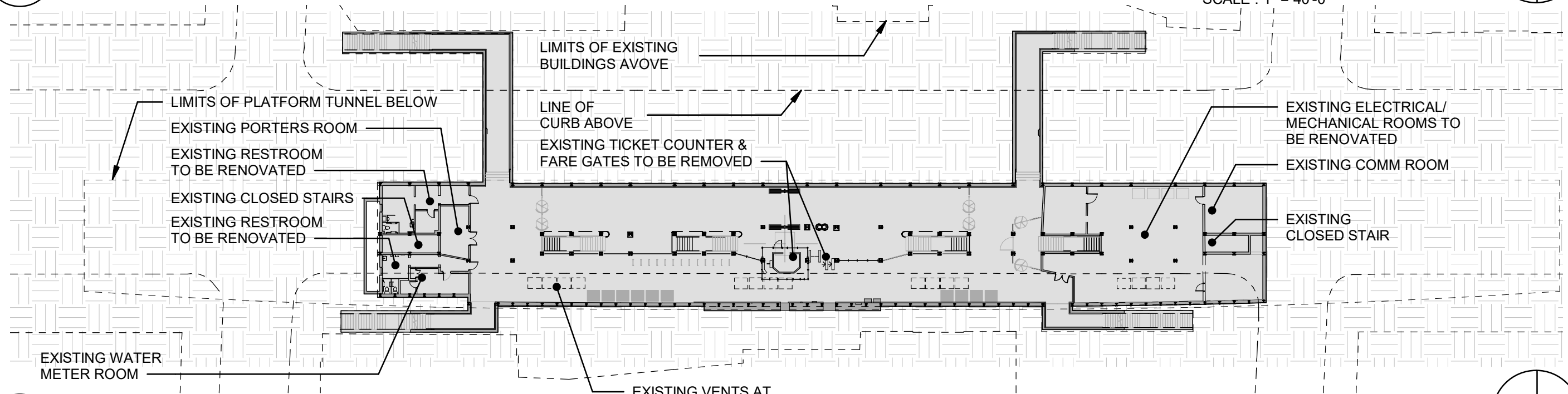
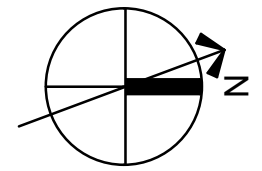
JUNE 25, 2024  
 A-01





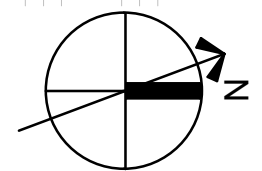
**1** EXISTING OVERALL STREET LEVEL PLAN

A-02 SCALE: 1" = 40'-0"



**2** EXISTING OVERALL MEZZANINE LEVEL PLAN

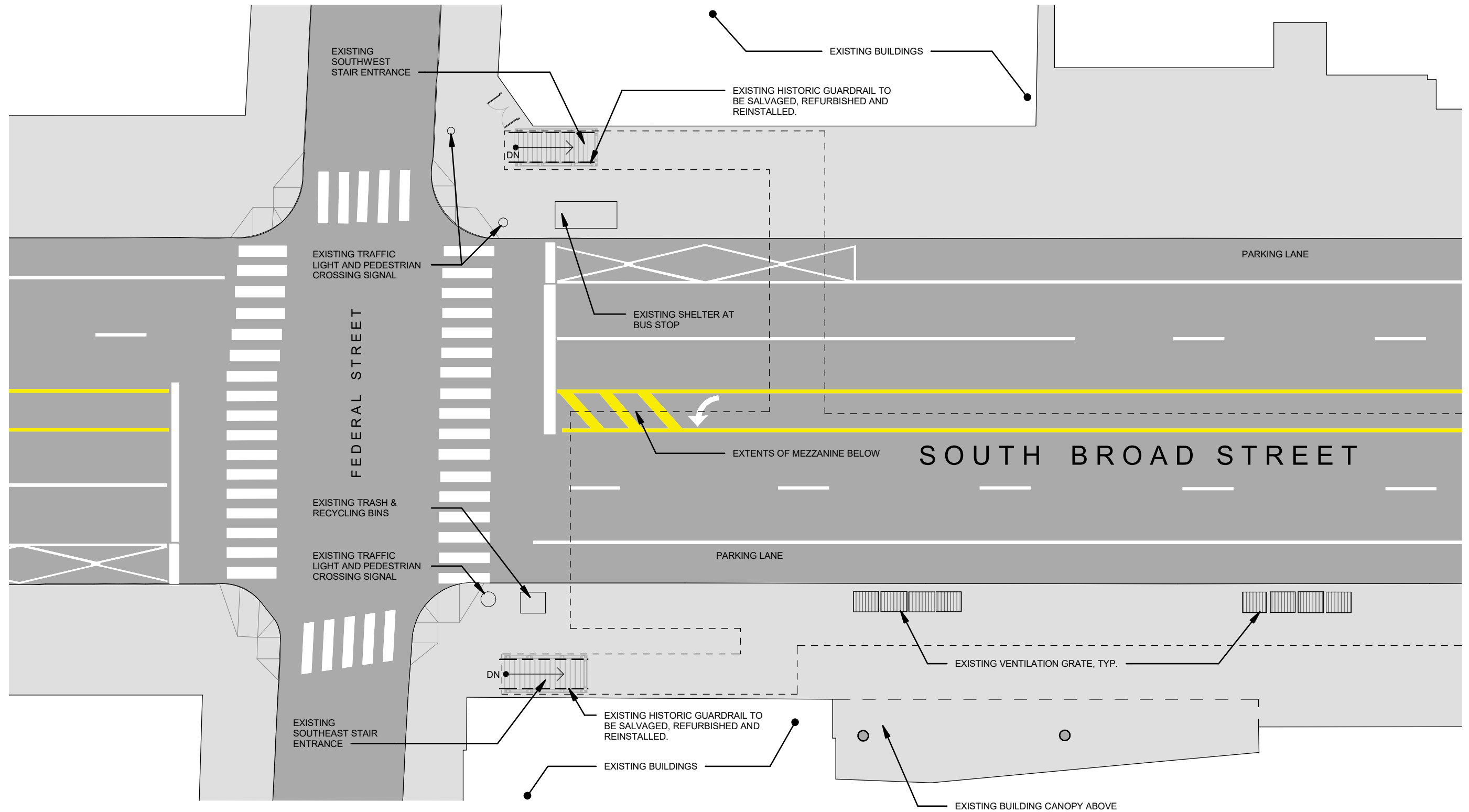
A-02 SCALE: 1" = 40'-0"



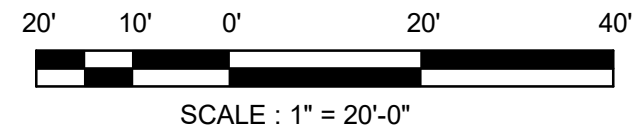
EXISTING OVERALL PLANS  
**ELLSWORTH-FEDERAL STATION**

JUNE 25, 2024  
 A-02



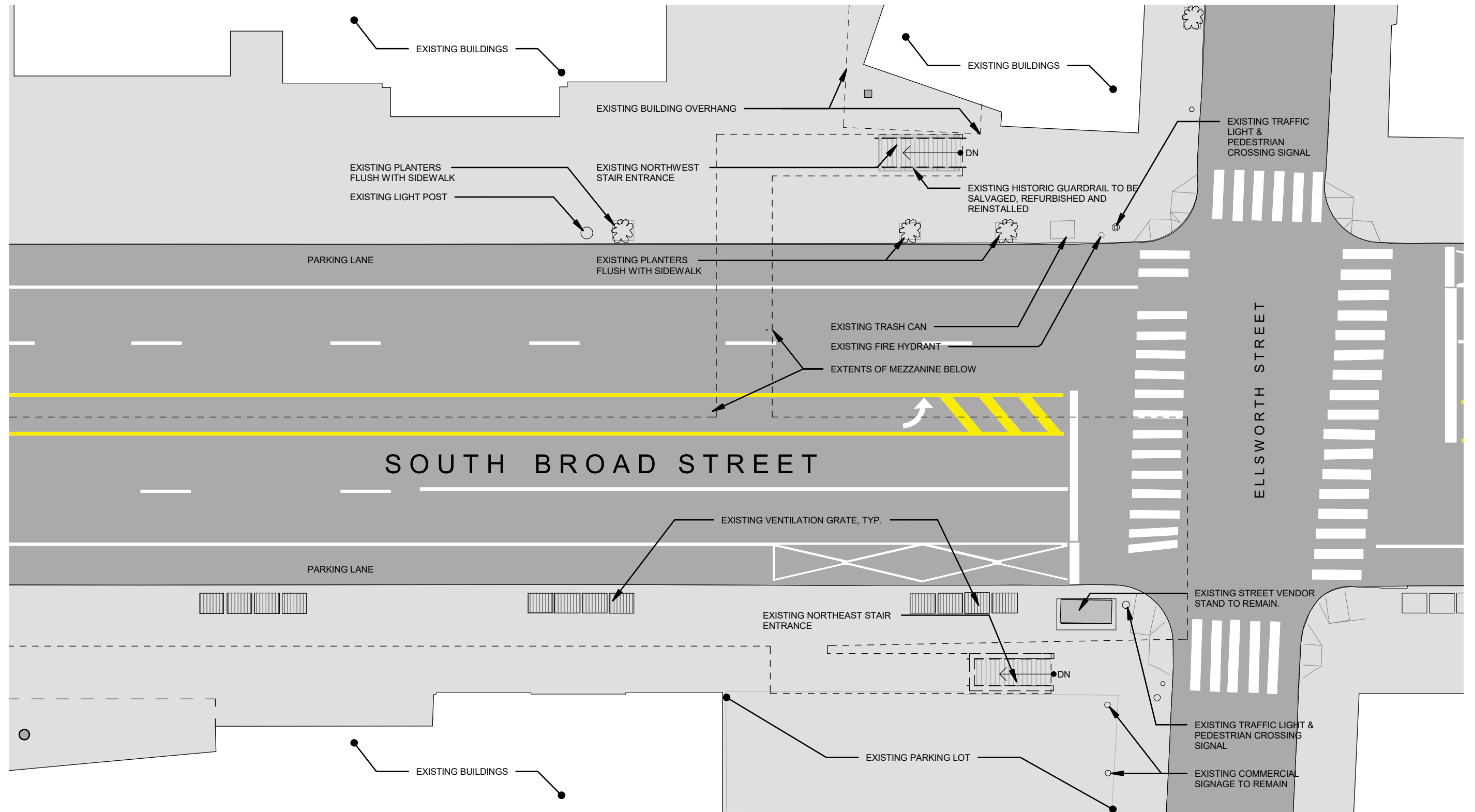


1 EXISTING STREET LEVEL PLAN - SOUTH  
 A-03 SCALE: 1" = 20'-0"

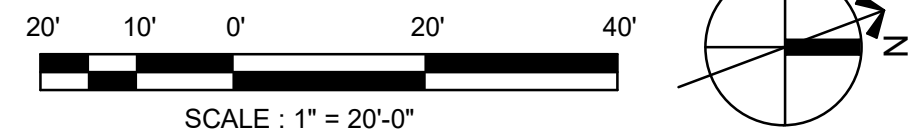


EXISTING STREET LEVEL PLAN  
 ELLSWORTH-FEDERAL STATION

JUNE 25, 2024  
 A-03



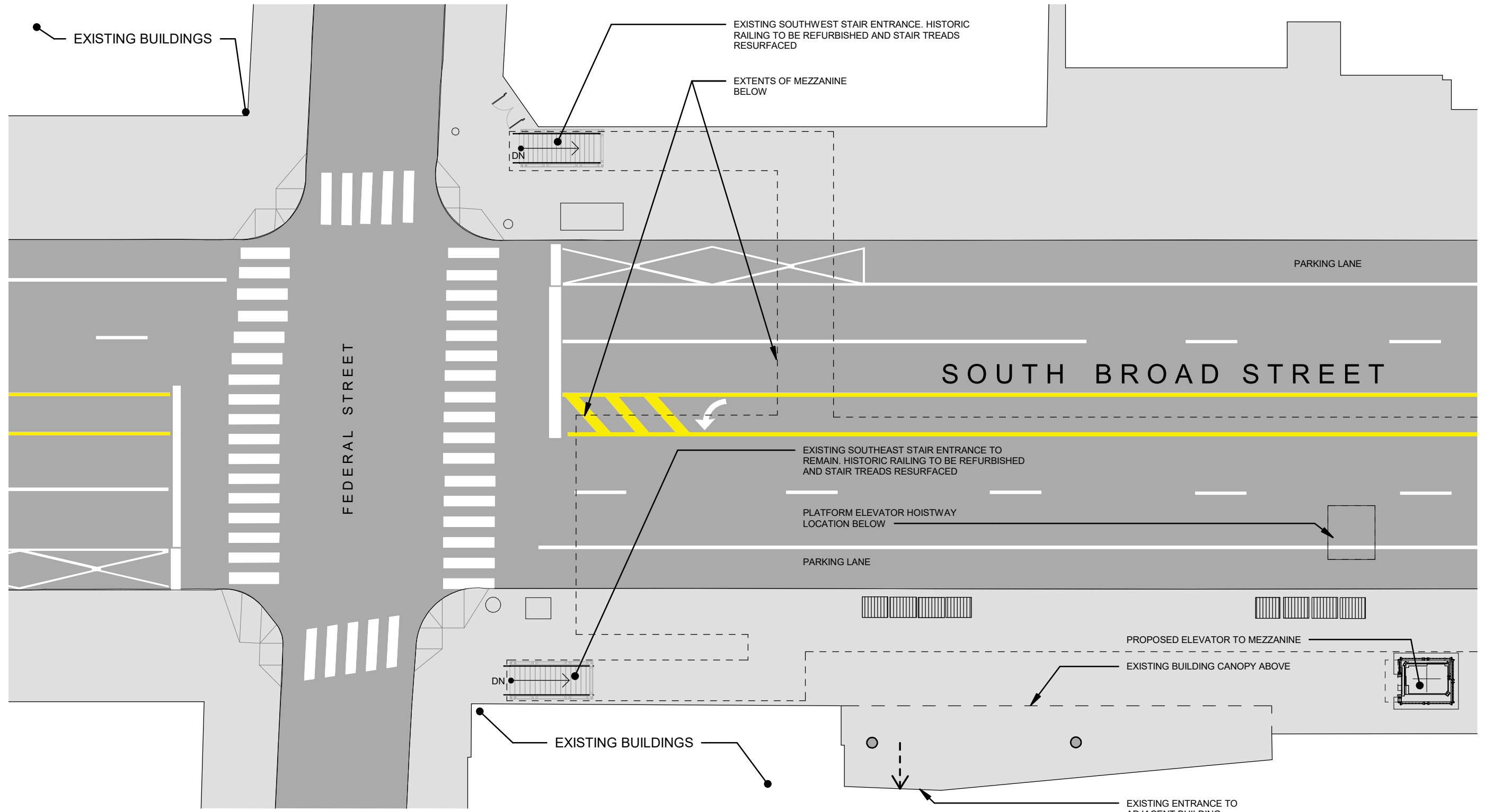
1  
A-04 EXISTING STREET LEVEL PLAN - NORTH  
SCALE: 1" = 20'-0"



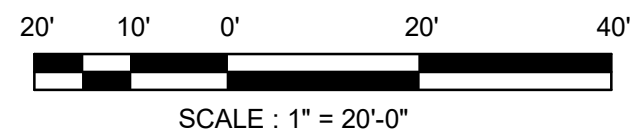
EXISTING STREET LEVEL PLAN  
ELLSWORTH-FEDERAL STATION

JUNE 25, 2024  
A-04

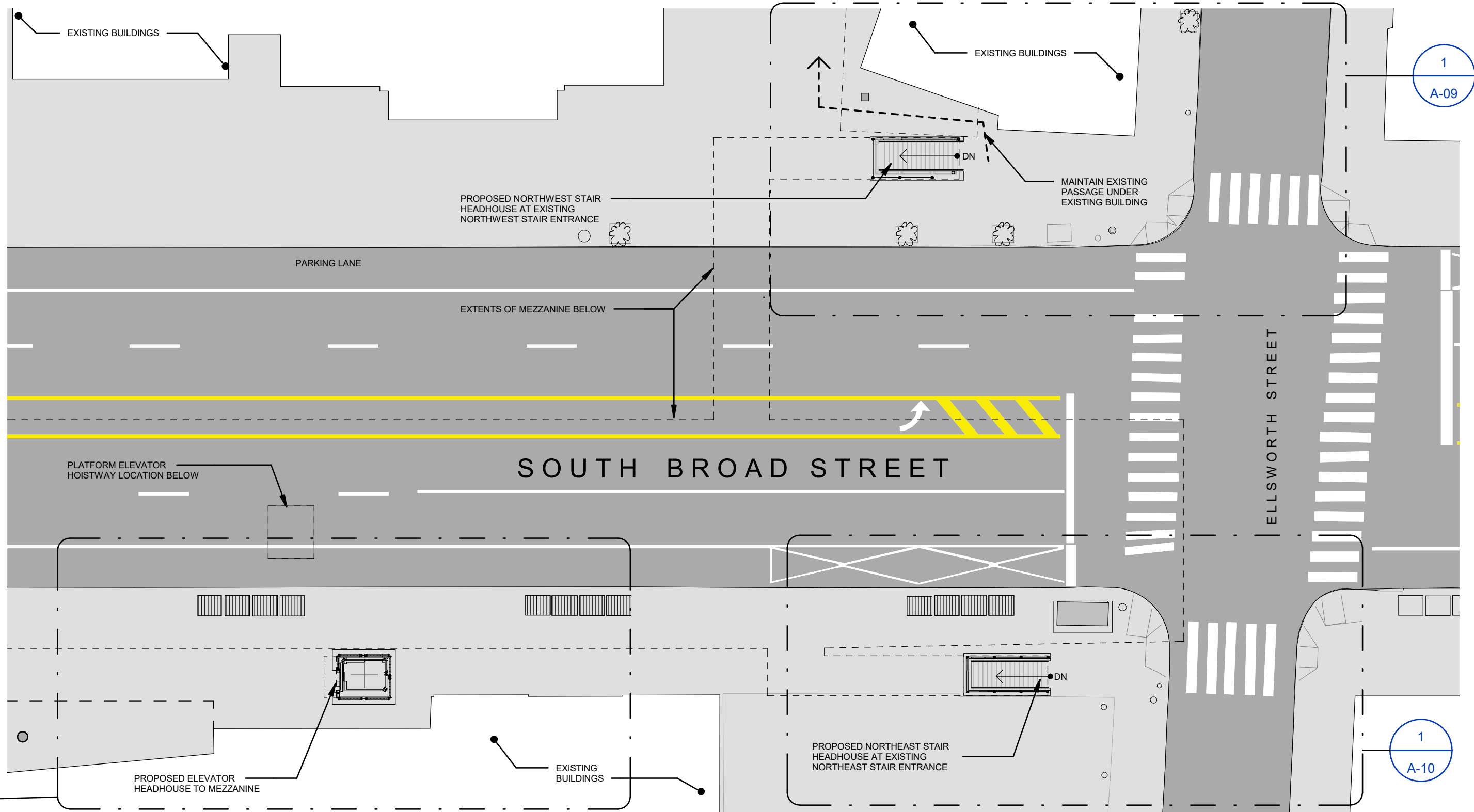




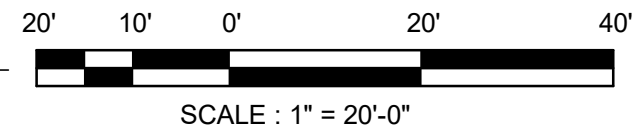
**1** PROPOSED STREET LEVEL PLAN - SOUTH  
 A-05 SCALE: 1" = 20'-0"



PROPOSED STREET LEVEL PLAN  
**ELLSWORTH-FEDERAL STATION**  
 JUNE 25, 2024  
 A-05

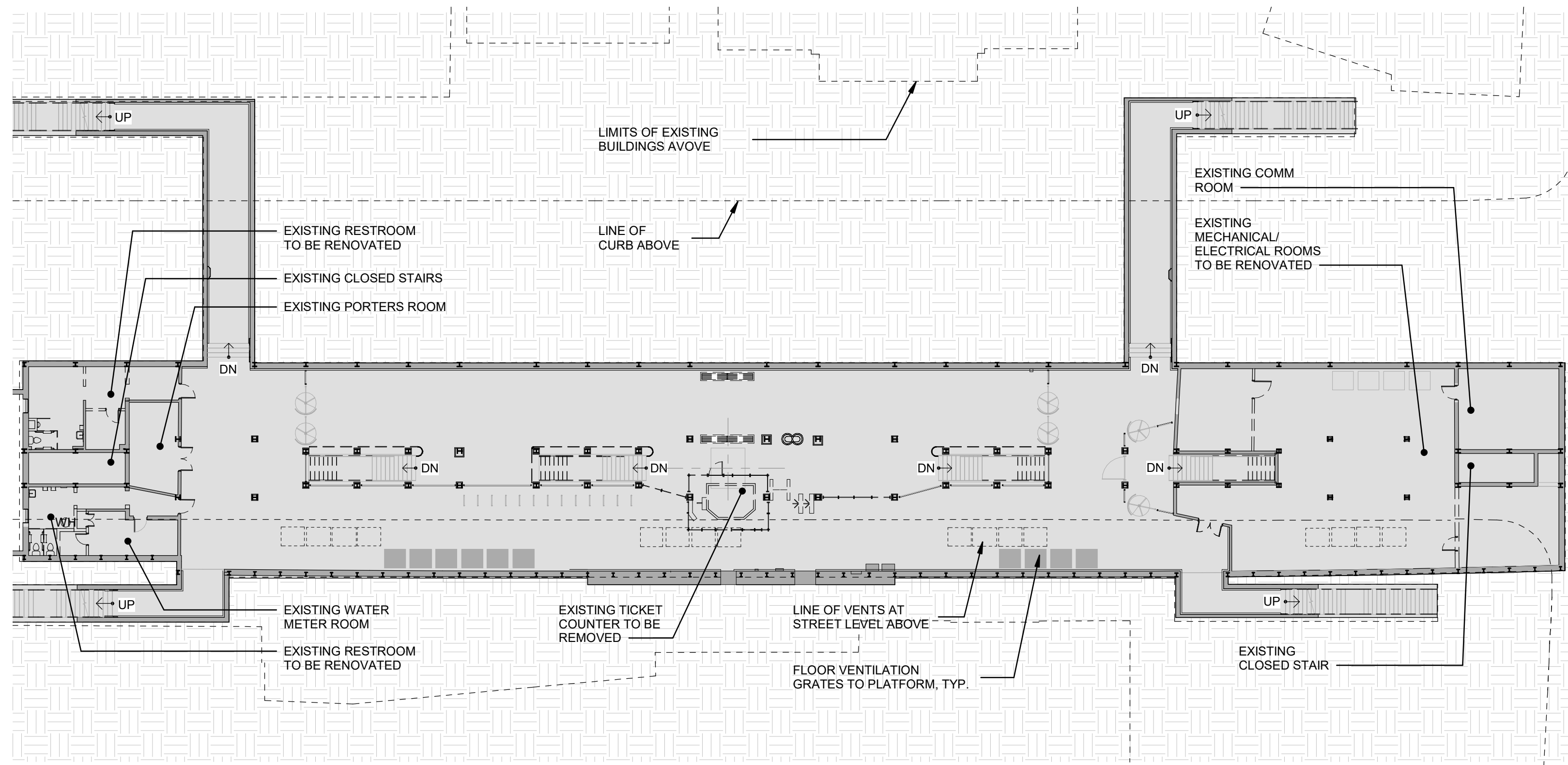


1  
A-06 PROPOSED STREET LEVEL PLAN - NORTH  
SCALE: 1" = 20'-0"

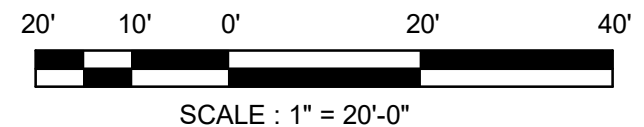


PROPOSED STREET LEVEL PLAN  
**ELLSWORTH-FEDERAL STATION**

JUNE 25, 2024  
 A-06

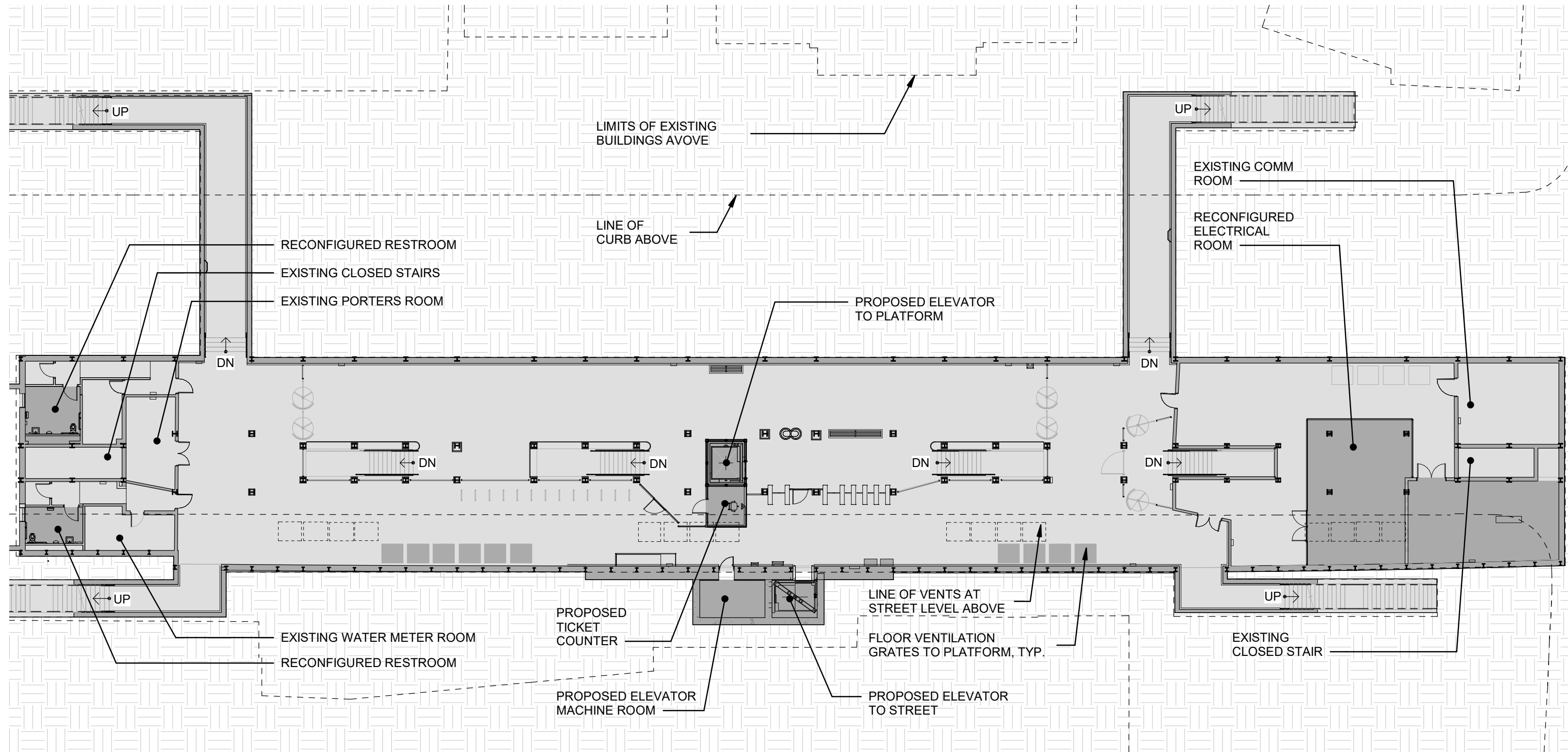


1 EXISTING MEZZANINE LEVEL PLAN  
 A-07 SCALE: 1" = 20'-0"

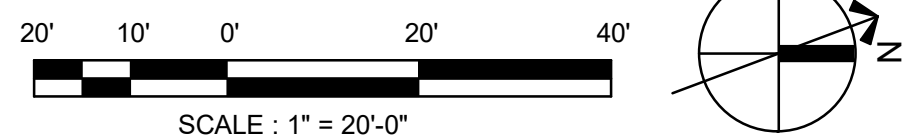


EXISTING MEZZANINE LEVEL PLAN  
 ELLSWORTH-FEDERAL STATION  
 JUNE 25, 2024  
 A-07

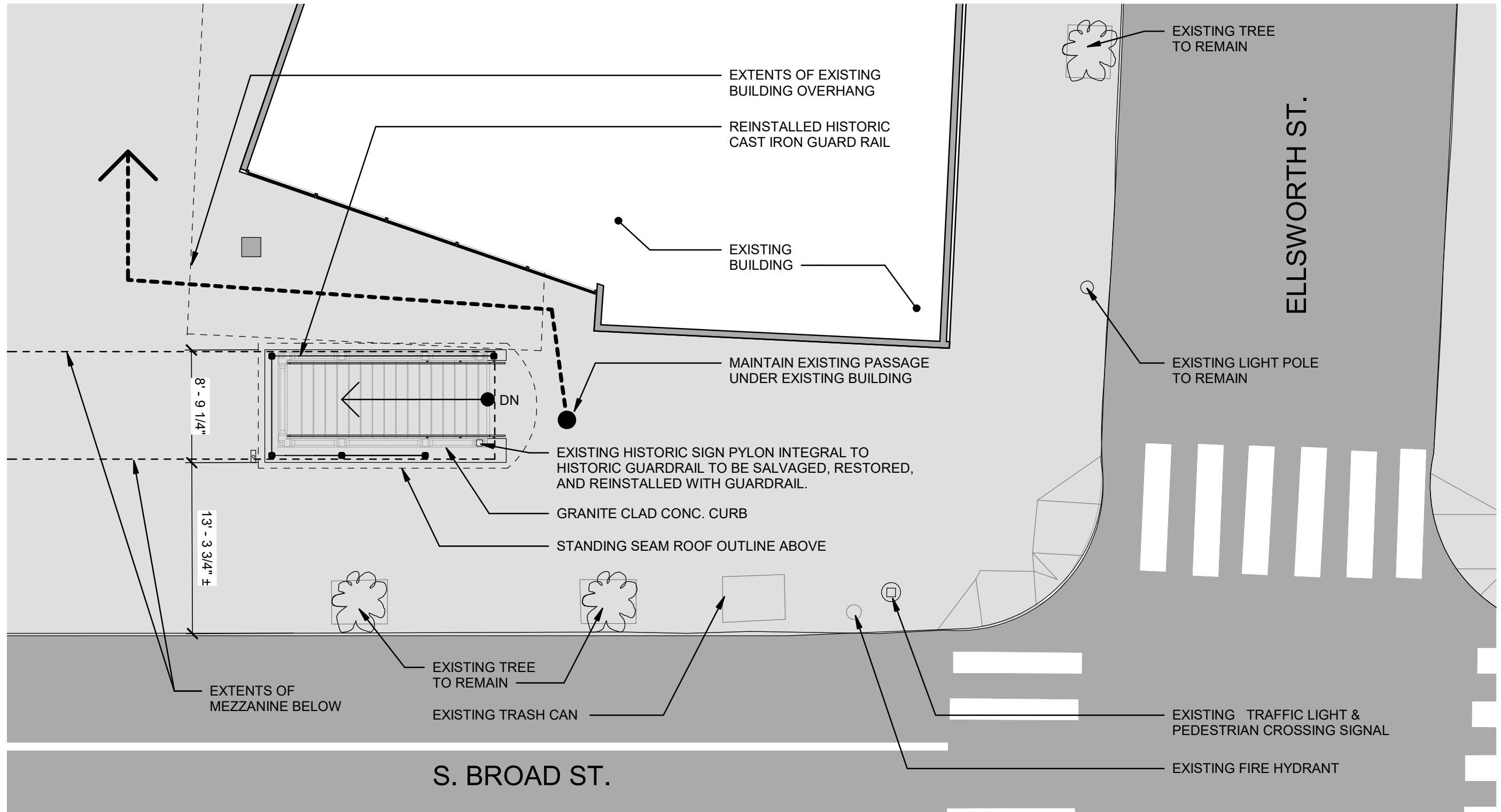




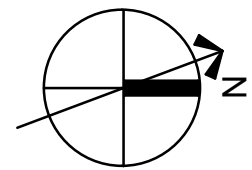
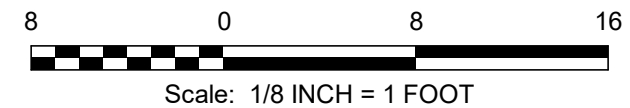
1 PROPOSED MEZZANINE LEVEL PLAN  
 A-08 SCALE: 1" = 20'-0"



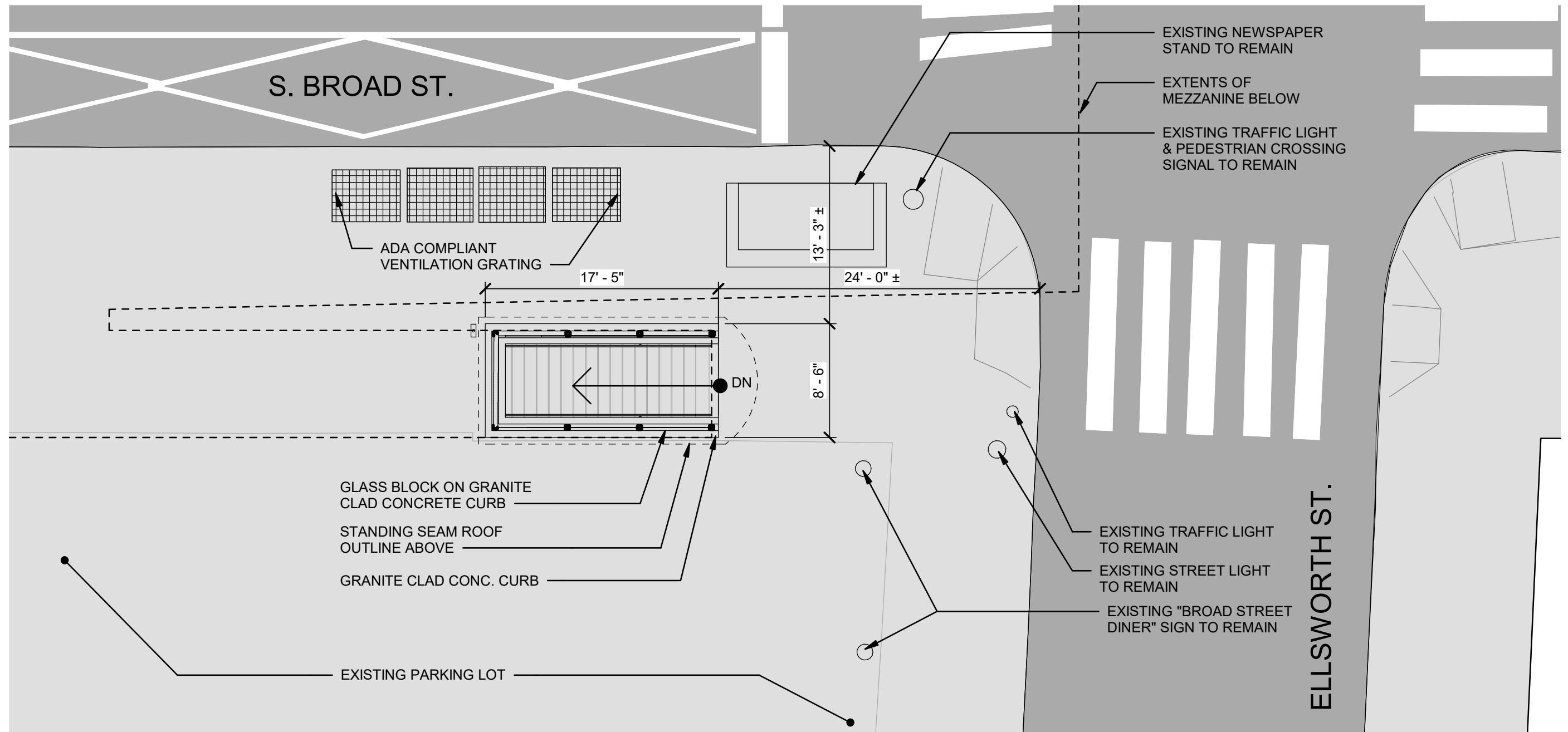
PROPOSED MEZZANINE LEVEL PLAN  
 ELLSWORTH-FEDERAL STATION  
 JUNE 25, 2024  
 A-08



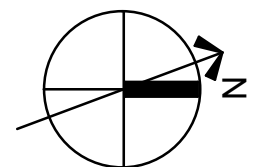
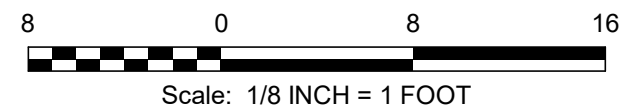
1 ENLARGED NORTHWEST CORNER HEADHOUSE - STREET LEVEL PLAN  
 A-09 SCALE: 1/8" = 1'-0"



ENLARGED PLAN NW CORNER HEADHOUSE  
 ELLSWORTH-FEDERAL STATION  
 JUNE 25, 2024  
 A-09

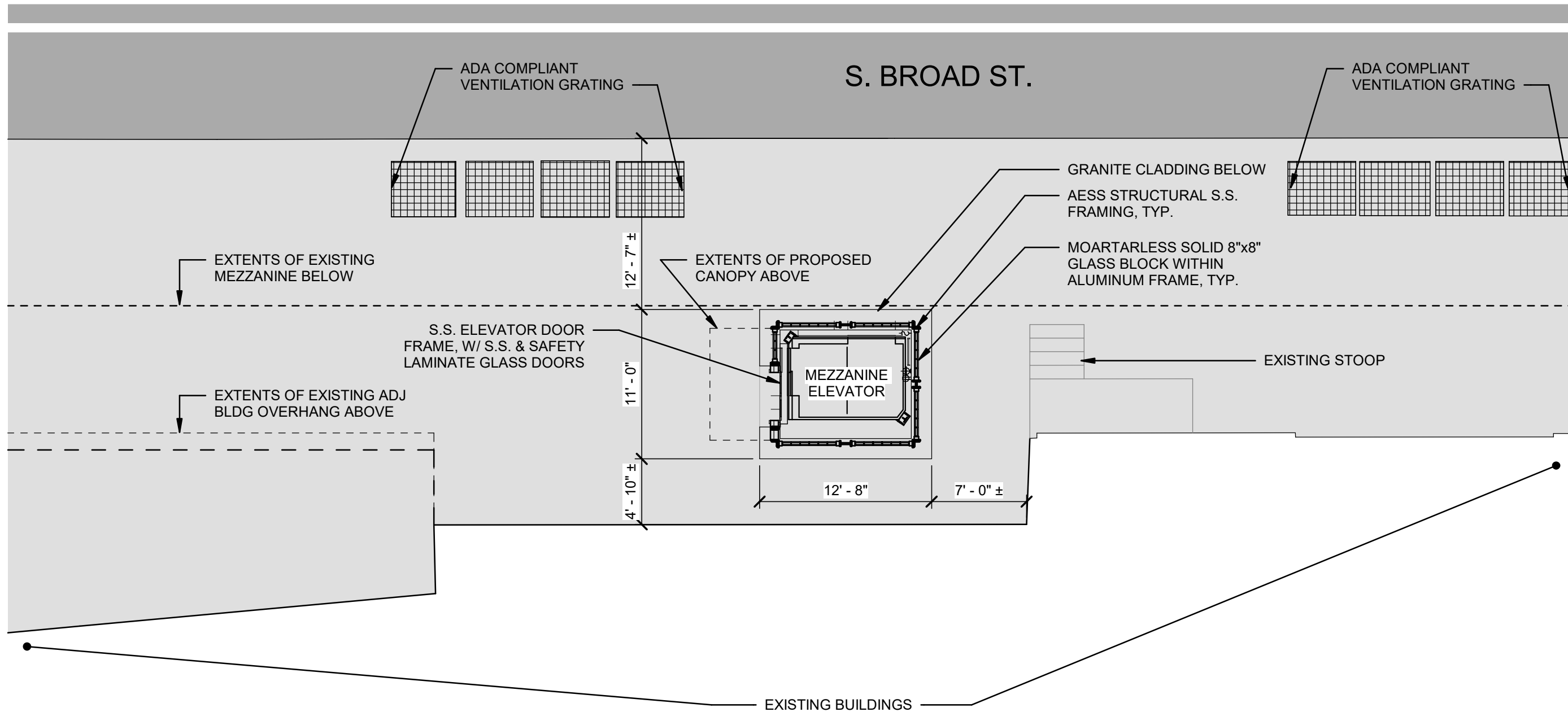


1 ENLARGED NORTHEAST CORNER HEADHOUSE - STREET LEVEL PLAN  
 A-10 SCALE: 1/8" = 1'-0"

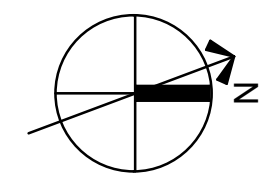
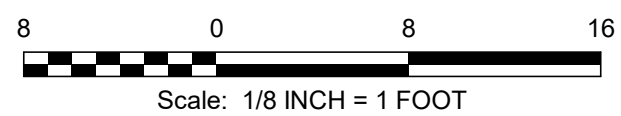


ENLARGED PLAN NE CORNER HEADHOUSE  
 ELLSWORTH-FEDERAL STATION

JUNE 25, 2024  
 A-10

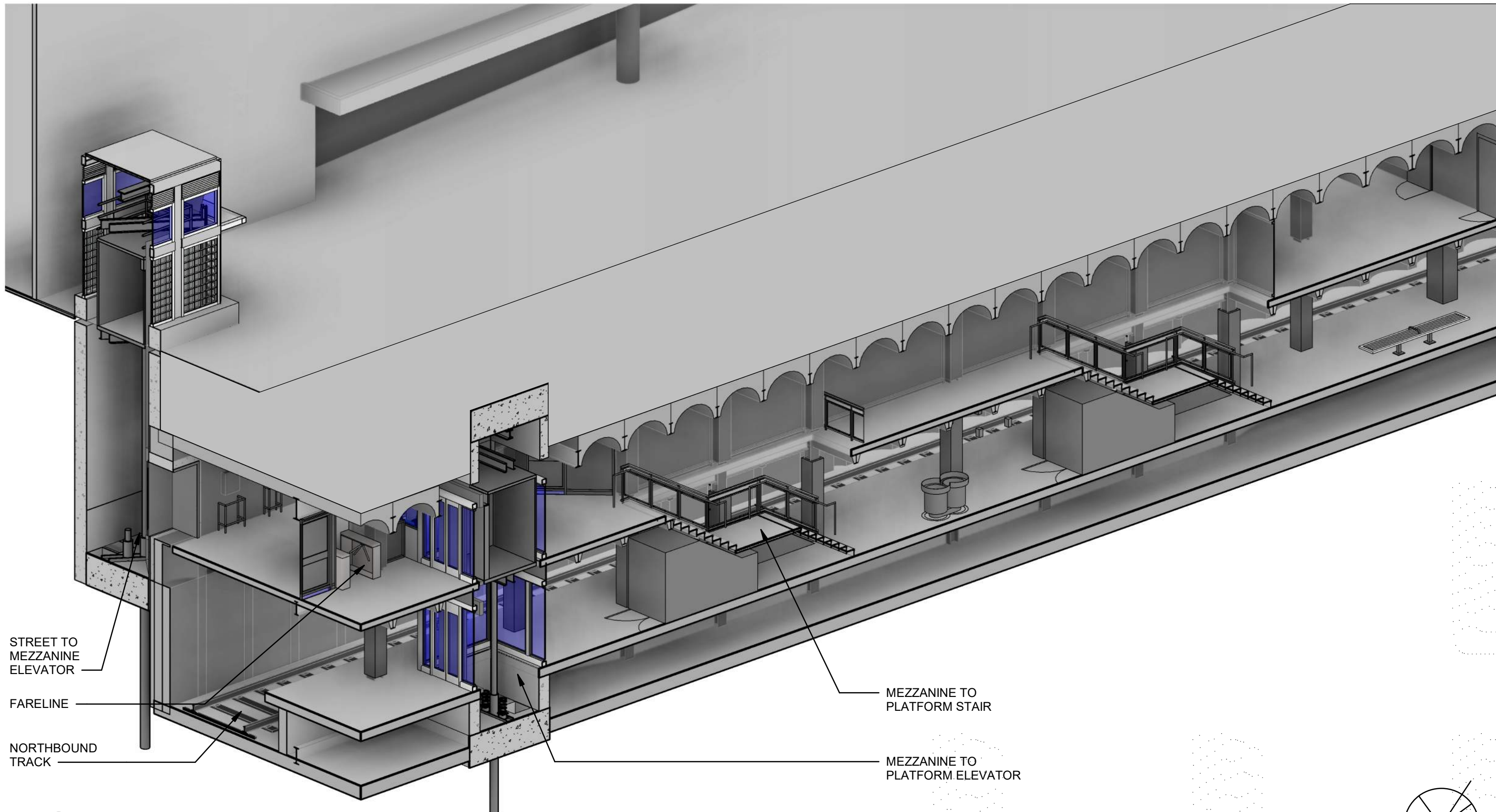


1 ENLARGED ELEVATOR HEADHOUSE - STREET LEVEL PLAN  
 A-11 SCALE: 1/8" = 1'-0"



ENLARGED PLAN ELEVATOR HEADHOUSE  
 ELLSWORTH-FEDERAL STATION

JUNE 25, 2024  
 A-11



STREET TO  
MEZZANINE  
ELEVATOR

FARELINE

NORTHBOUND  
TRACK

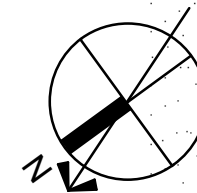
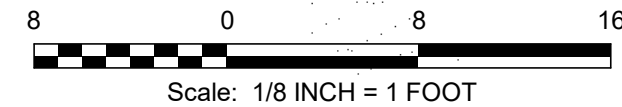
MEZZANINE TO  
PLATFORM STAIR

MEZZANINE TO  
PLATFORM ELEVATOR

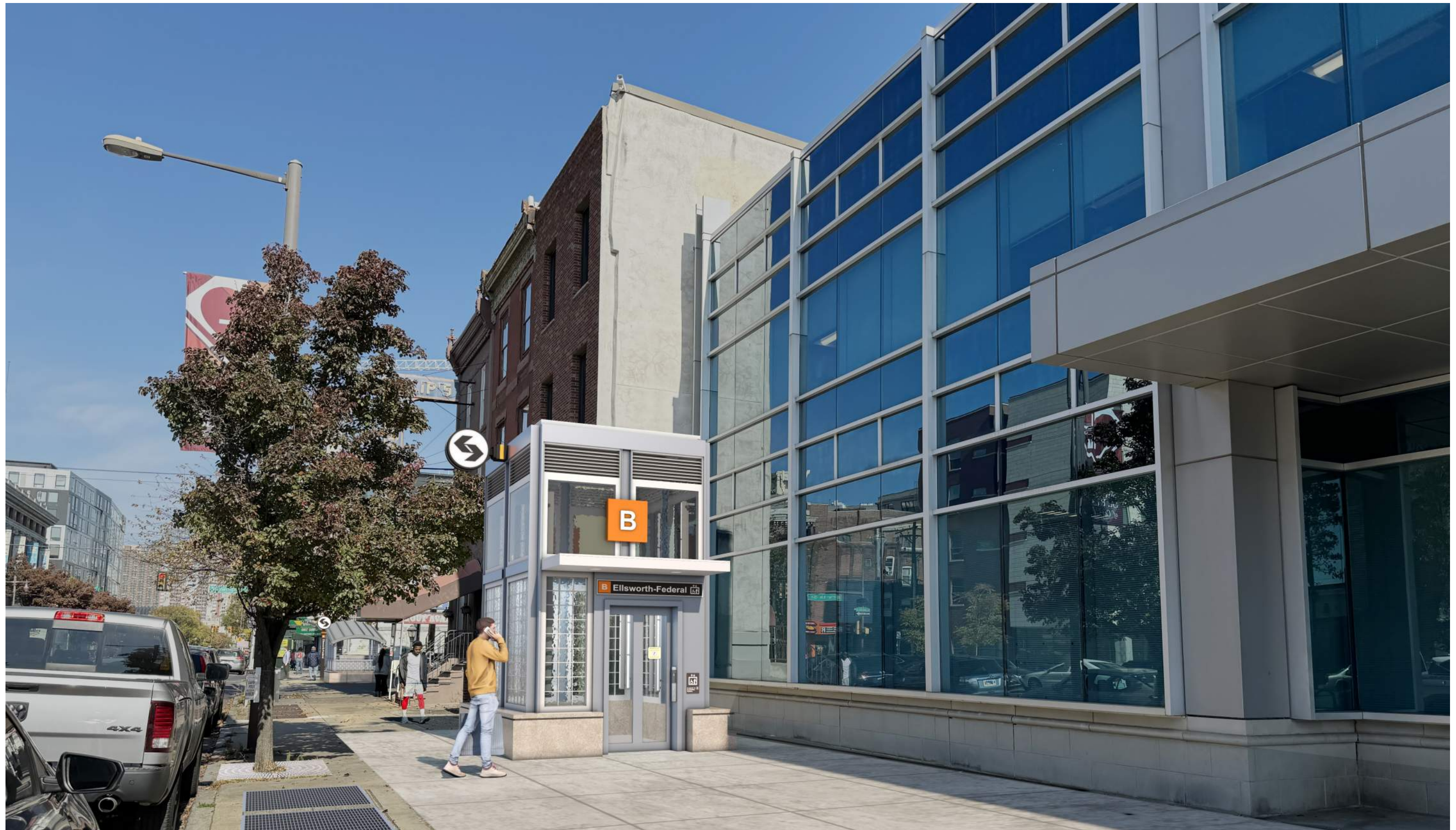
**1** AXONOMETRIC SECTION THROUGH ELEVATORS  
A-12 SCALE:

AXONOMETRIC SECTION THROUGH ELEVATORS  
ELLSWORTH-FEDERAL STATION

JUNE 25, 2024  
A-12







1  
A-13

STREET ELEVATOR APPROACH FROM FEDERAL STREET LOOKING NORTH

SCALE: 12" = 1'-0"

PROPOSED PERSPECTIVE 1 - LOOKING NORTH

ELLSWORTH-FEDERAL STATION

JUNE 25, 2024

A-13



1  
A-14

STREET ELEVATOR APPROACH FROM ELLSWORTH STREET LOOKING SOUTH

SCALE: 12" = 1'-0"

PROPOSED PERSPECTIVE 2 - LOOKING SOUTH

ELLSWORTH-FEDERAL STATION

JUNE 25, 2024

A-14



1  
A-14a

STREET ELEVATOR APPROACH FROM ELLSWORTH STREET LOOKING SOUTH

SCALE: 12" = 1'-0"

PROPOSED PERSPECTIVE 2 - LOOKING SOUTH - AT NIGHT

ELLSWORTH-FEDERAL STATION

JUNE 25, 2024

A-14a



1 NW CORNER STAIR APPROACH FROM ELLSWORTH STREET LOOKING SOUTHWEST  
A-15 SCALE: 12" = 1'-0"

PROPOSED PERSPECTIVE 3 - LOOKING SOUTHWEST

**ELLSWORTH-FEDERAL STATION**

JUNE 25, 2024

A-15



1 NE CORNER STAIR APPROACH FROM ELLSWORTH STREET LOOKING SOUTHEAST  
A-16 SCALE: 12" = 1'-0"

PROPOSED PERSPECTIVE 4 - LOOKING SOUTHEAST

**ELLSWORTH-FEDERAL STATION**

JUNE 25, 2024

A-16





1 NE CORNER STAIR APPROACH FROM ELLSWORTH STREET LOOKING SOUTHEAST  
A-16a SCALE: 12" = 1'-0"

PROPOSED PERSPECTIVE 4 - LOOKING SOUTHEAST - AT NIGHT

**ELLSWORTH-FEDERAL STATION**

JUNE 25, 2024

A-16a



1 PLATFORM ELEVATOR APPROACH FROM NORTH MEZZANINE LOOKING SOUTHEAST  
A-17 SCALE: 12" = 1'-0"

PROPOSED PERSPECTIVE 5 - LOOKING SOUTHEAST

ELLSWORTH-FEDERAL STATION

JUNE 25, 2024

A-17



1  
A-18

PLATFORM ELEVATOR APPROACH FROM NORTH PLATFORM LOOKING SOUTH

SCALE: 12" = 1'-0"

PROPOSED PERSPECTIVE 6 - LOOKING SOUTH

ELLSWORTH-FEDERAL STATION

JUNE 25, 2024

A-18





1 EAST MEZZANINE APPROACH FROM SE STAIR LOOKING NORTHWEST  
A-19 SCALE: 12" = 1'-0"

PROPOSED PERSPECTIVE 7 - LOOKING NORTHWEST

ELLSWORTH-FEDERAL STATION

JUNE 25, 2024

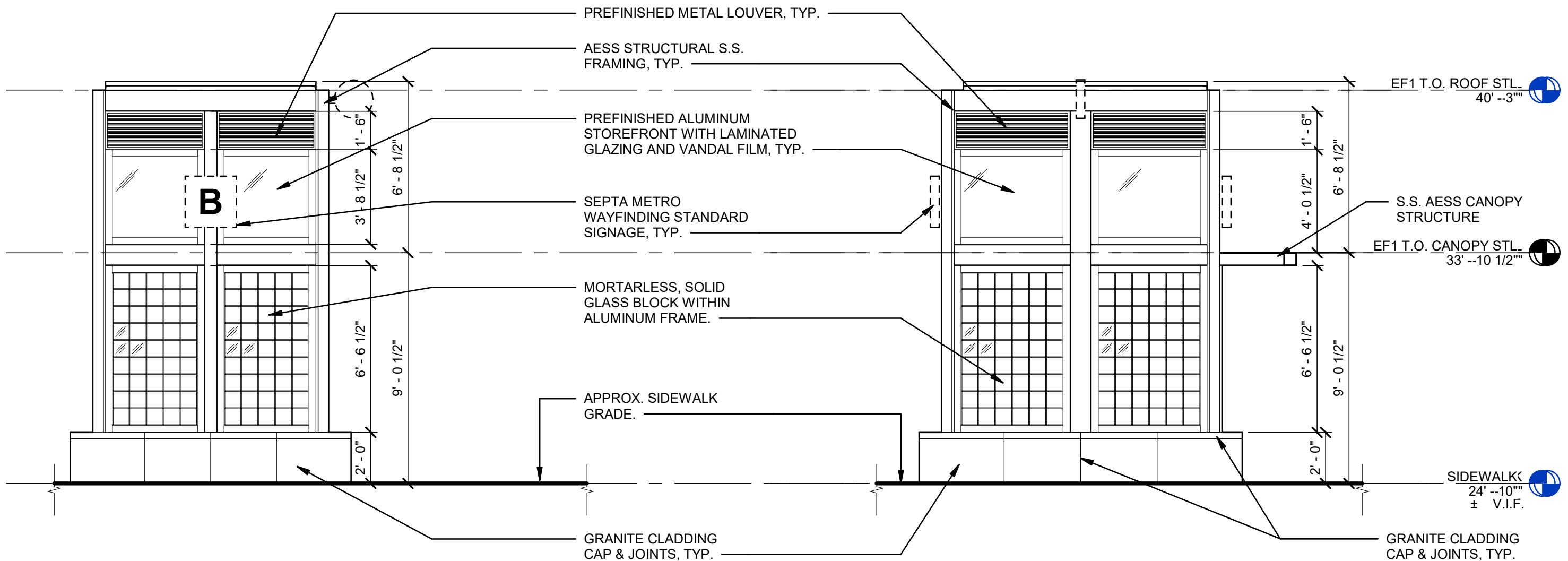
A-19



1 PLATFORM STAIR, LOOKING SOUTH  
A-20 SCALE: 12" = 1'-0"

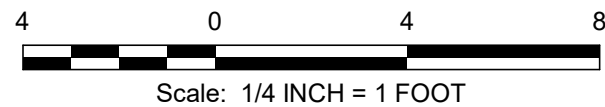
PROPOSED PERSPECTIVE 8 - LOOKING SOUTH  
ELLSWORTH-FEDERAL STATION

JUNE 25, 2024  
A-20



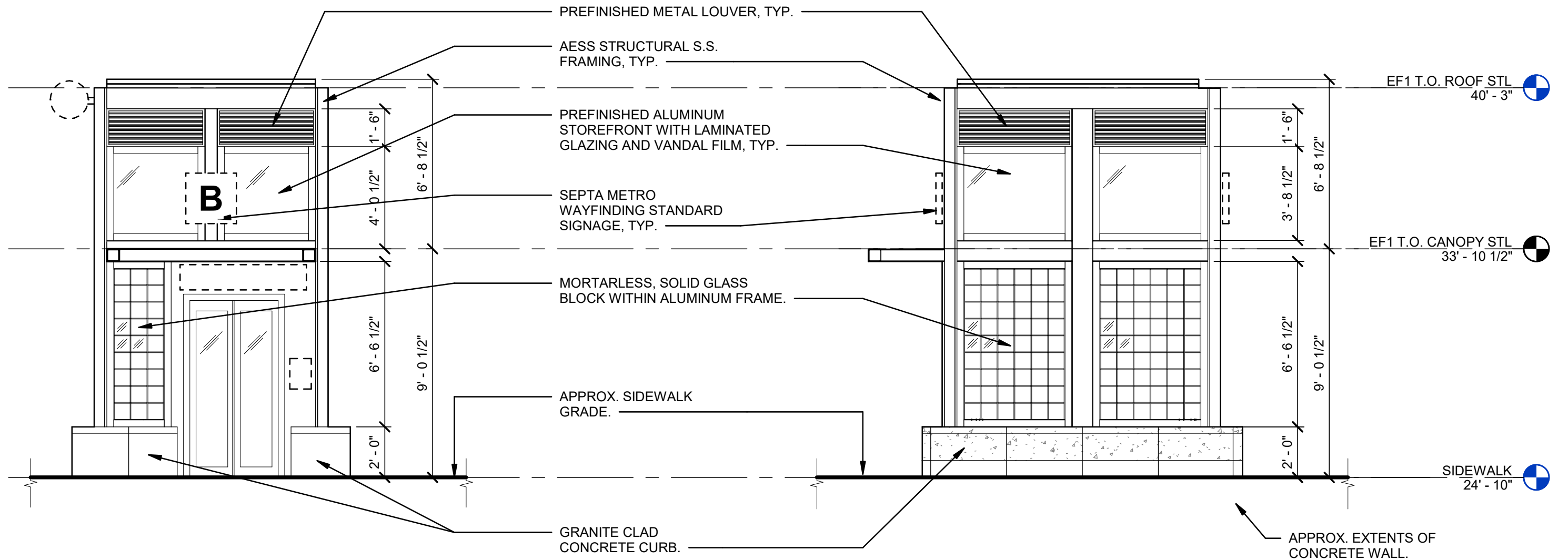
**1** STREET ELEVATOR - NORTH ELEVATION  
 A-21 SCALE: 1/4" = 1'-0"

**2** STREET ELEVATOR - WEST ELEVATION  
 A-21 SCALE: 1/4" = 1'-0"



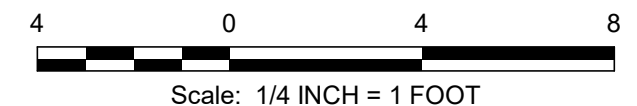
ELEVATOR HEADHOUSE ELEVATIONS 1  
 ELLSWORTH-FEDERAL STATION  
 JUNE 25, 2024  
 A-21





**1** STREET ELEVATOR - SOUTH ELEVATION  
 A-22 SCALE: 1/4" = 1'-0"

**2** STREET ELEVATOR - EAST ELEVATION  
 A-22 SCALE: 1/4" = 1'-0"

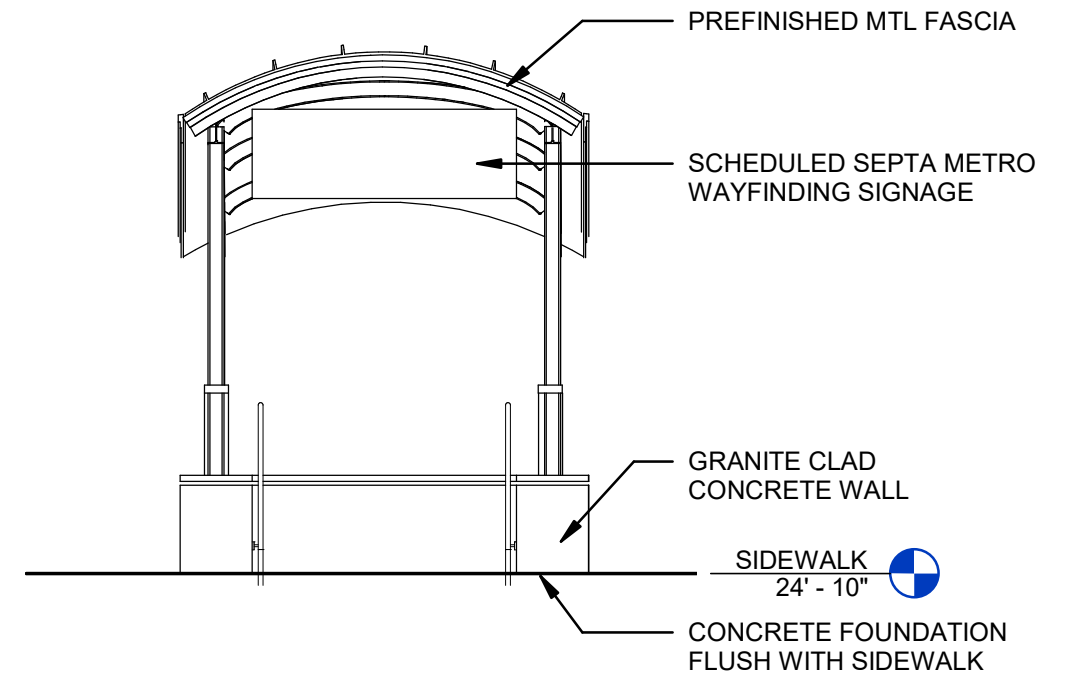


ELEVATOR HEADHOUSE ELEVATIONS 2

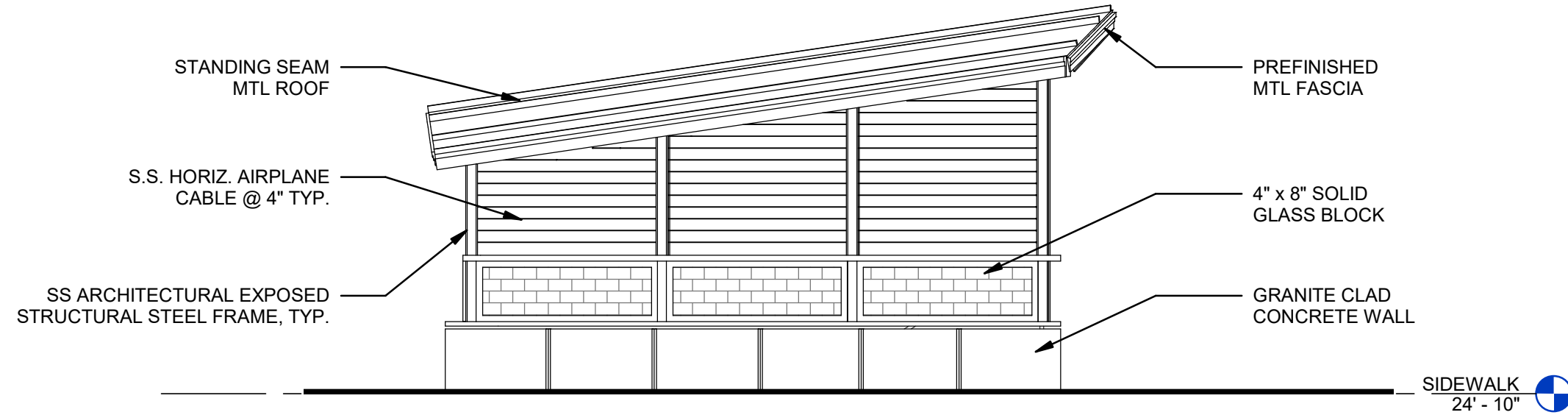
ELLSWORTH-FEDERAL STATION

JUNE 25, 2024

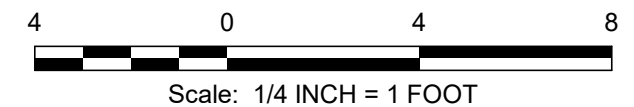
A-22



**2** NORTH EAST STAIR HEADHOUSE - NORTH ELEVATION  
 A-23 SCALE: 1/4" = 1'-0"



**1** NORTH EAST STAIR HEADHOUSE - EAST ELEVATION  
 A-23 SCALE: 1/4" = 1'-0"

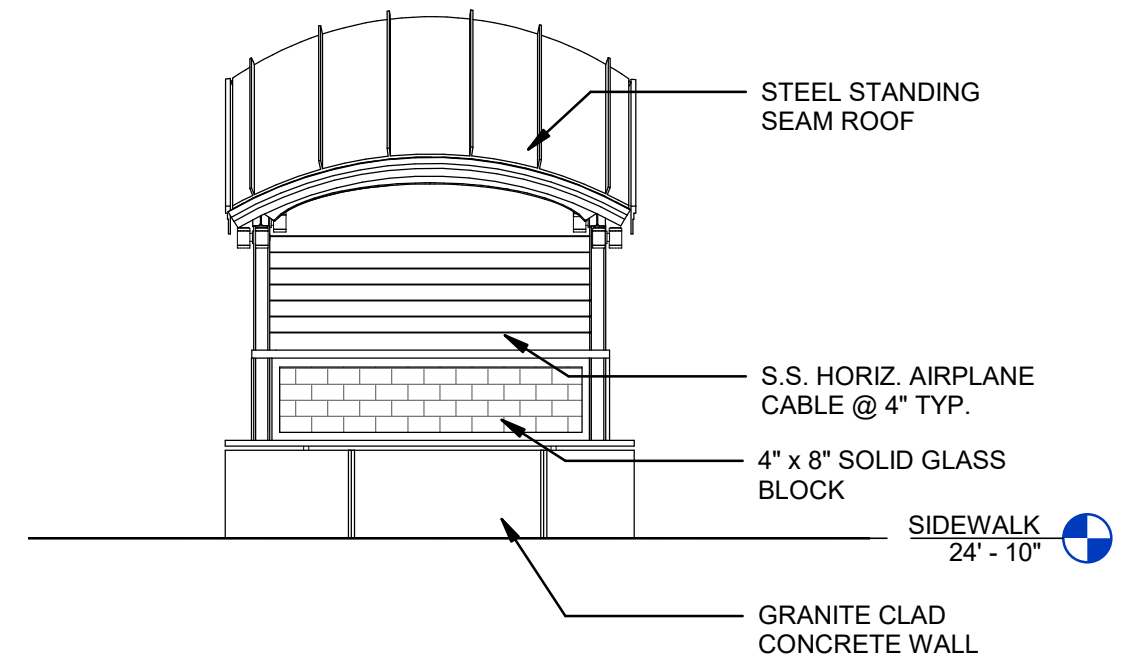


NE STAIR HEADHOUSE TYPE 1 - ELEVATIONS 1

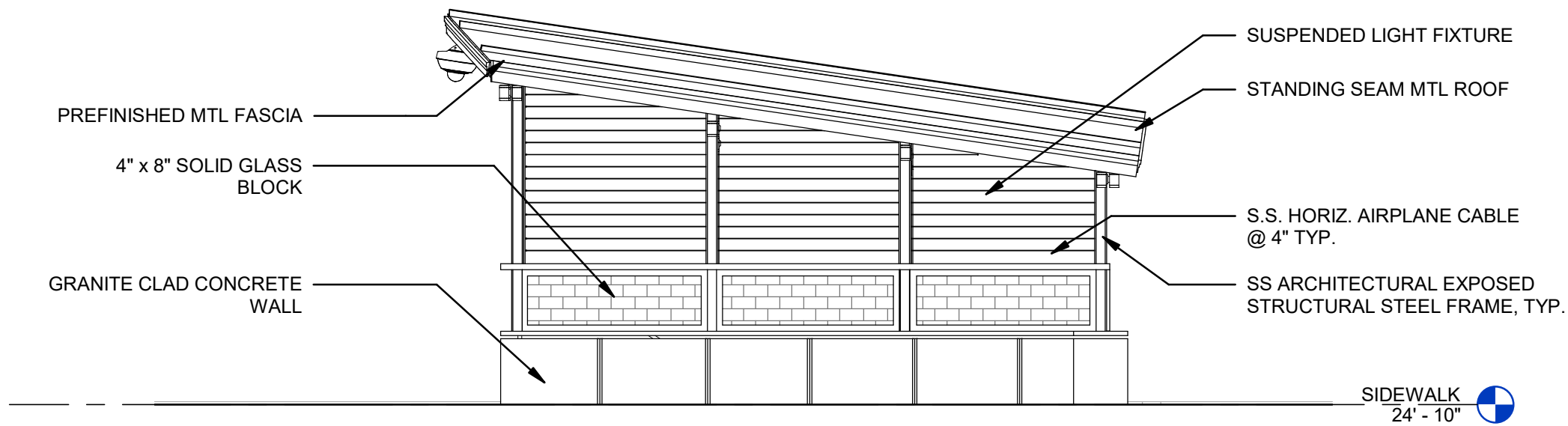
ELLSWORTH-FEDERAL STATION

JUNE 25, 2024

A-23



**1** NORTH EAST STAIR HEADHOUSE - SOUTH ELEVATION  
 A-24 SCALE: 1/4" = 1'-0"



**2** NORTH EAST STAIR HEADHOUSE - WEST ELEVATION  
 A-24 SCALE: 1/4" = 1'-0"

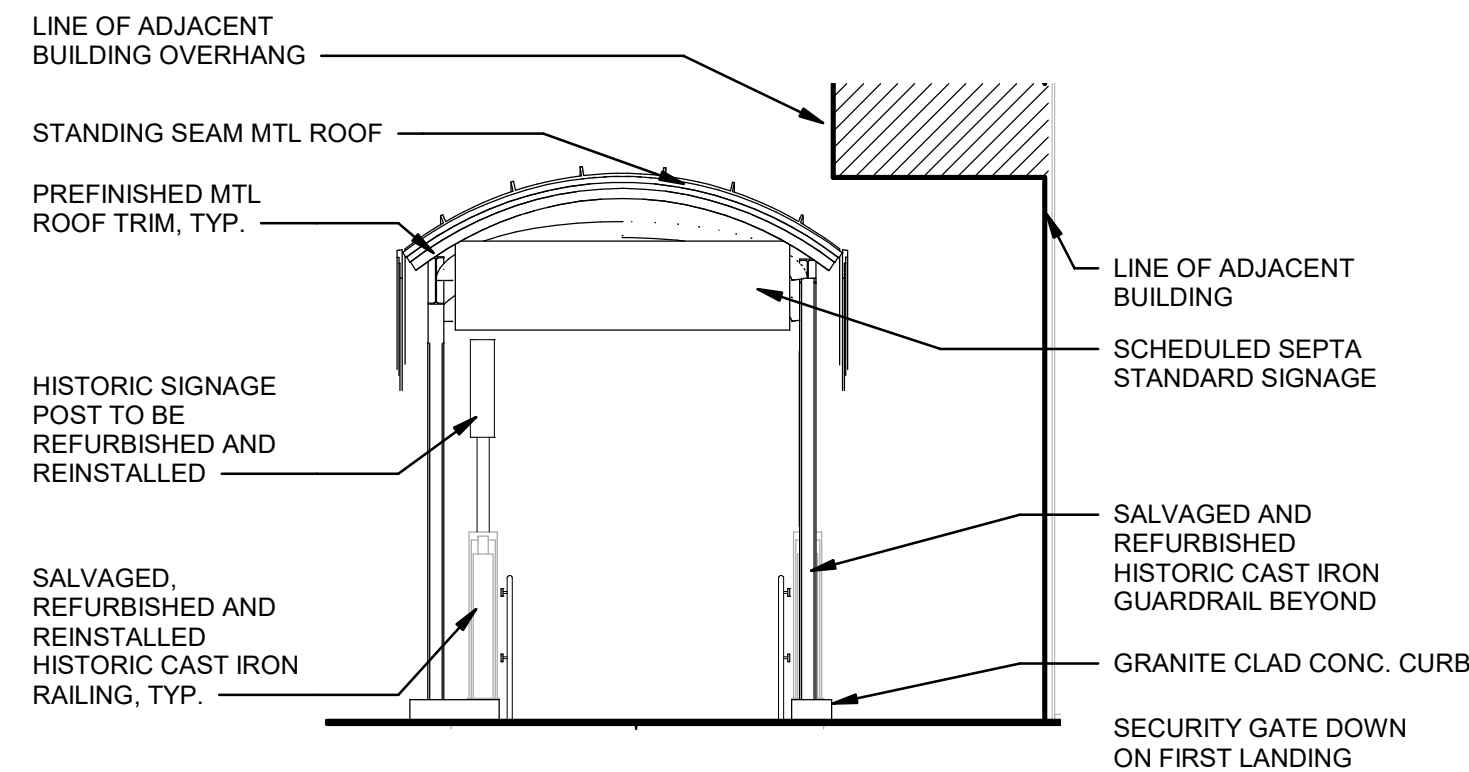


NE STAIR HEADHOUSE TYPE 1 - ELEVATIONS 2

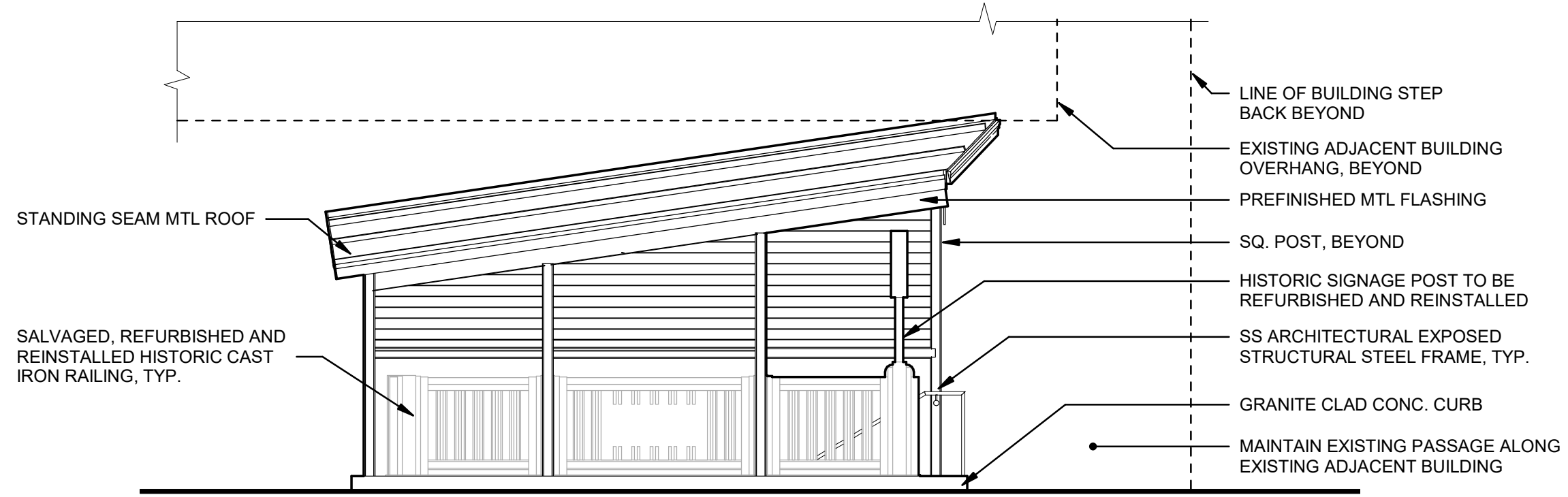
ELLSWORTH-FEDERAL STATION

JUNE 25, 2024

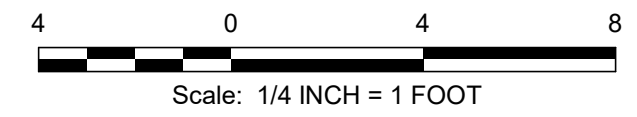
A-24



1 NW STAIR HEADHOUSE - NORTH ELEVATION  
 A-25 SCALE: 1/4" = 1'-0"



2 NW STAIR HEADHOUSE - EAST ELEVATION  
 A-25 SCALE: 1/4" = 1'-0"



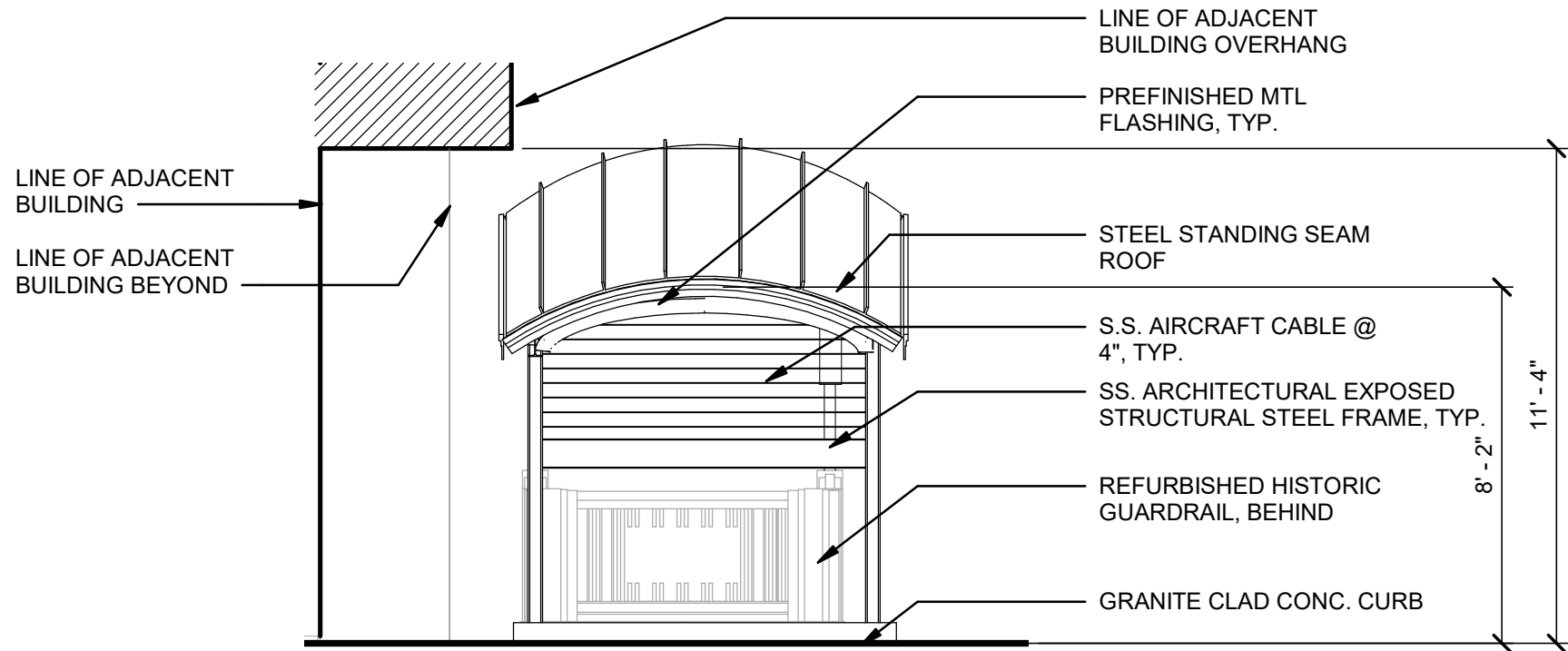
NW STAIR HEADHOUSE TYPE 2 - ELEVATIONS 1

ELLSWORTH-FEDERAL STATION

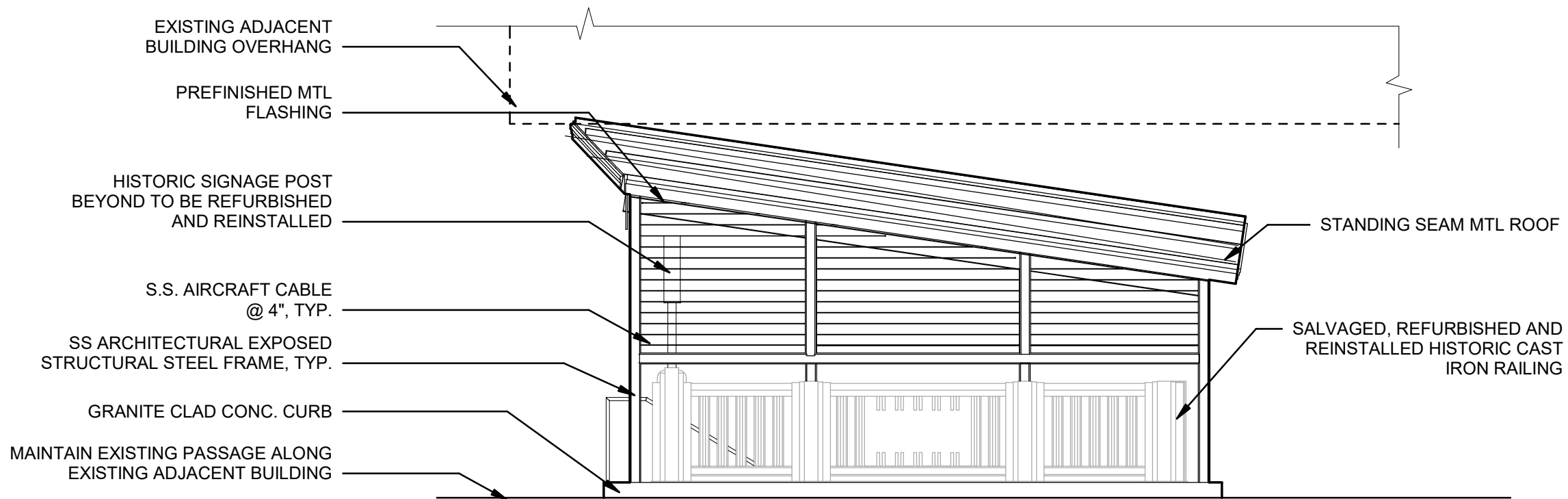
JUNE 25, 2024

A-25





1 NORTH WEST STAIR HEADHOUSE - SOUTH ELEVATION  
 A-26 SCALE: 1/4" = 1'-0"



2 NORTH WEST STAIRHEADHOUSE - WEST ELEVATION  
 A-26 SCALE: 1/4" = 1'-0"



NW STAIR HEADHOUSE TYPE 2 - ELEVATIONS 2

ELLSWORTH-FEDERAL STATION

JUNE 25, 2024

A-26





1 PERSPECTIVE OF EXISTING NW STAIR LOOKING SW  
A-27



2 PERSPECTIVE OF EXISTING NE STAIR LOOKING SE  
A-27



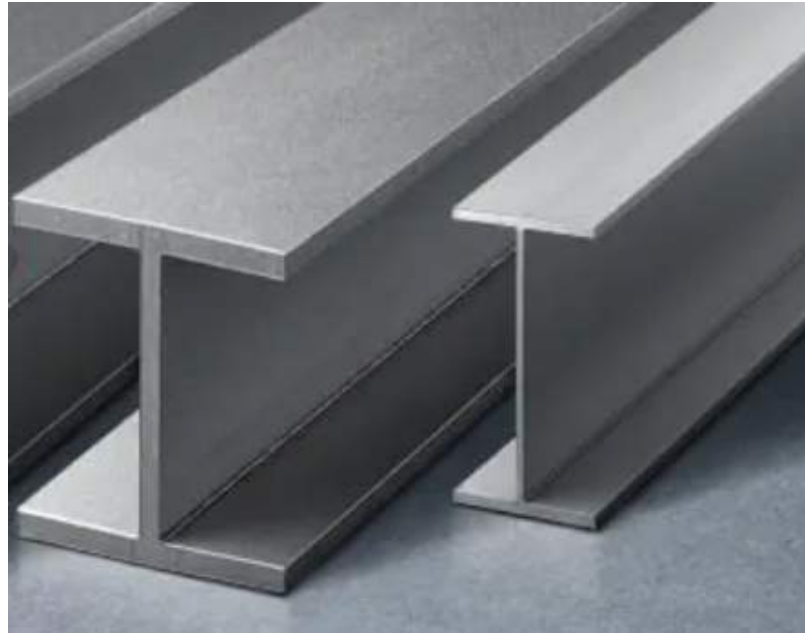
3 PERSPECTIVE OF EXISTING STOOP LOOKING SOUTH  
A-27



4 PERSPECTIVE OF PROPOSED ELEVATOR LOCATION, LOOKING NE  
A-27

EXISTING PERSPECTIVES  
ELLSWORTH-FEDERAL STATION

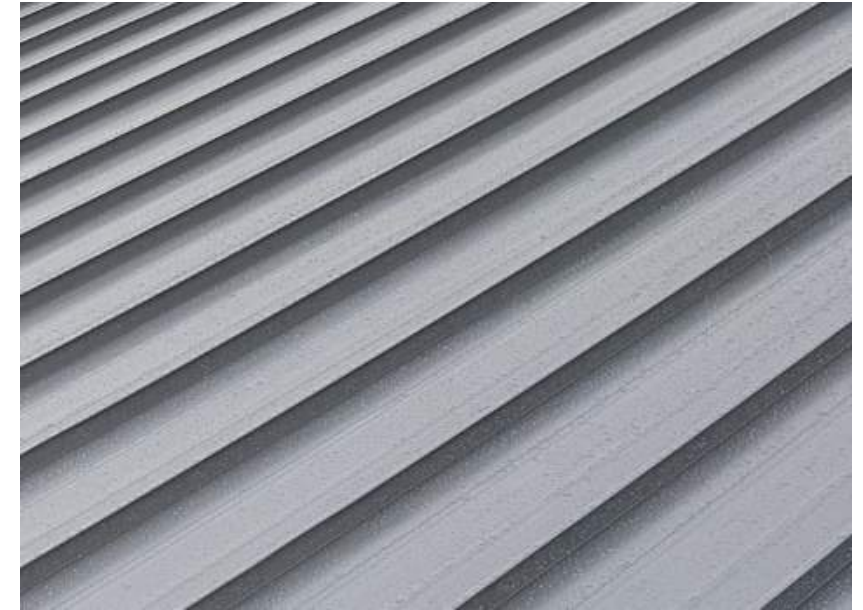
JUNE 25, 2024  
A-27



**STAINLESS STEEL**



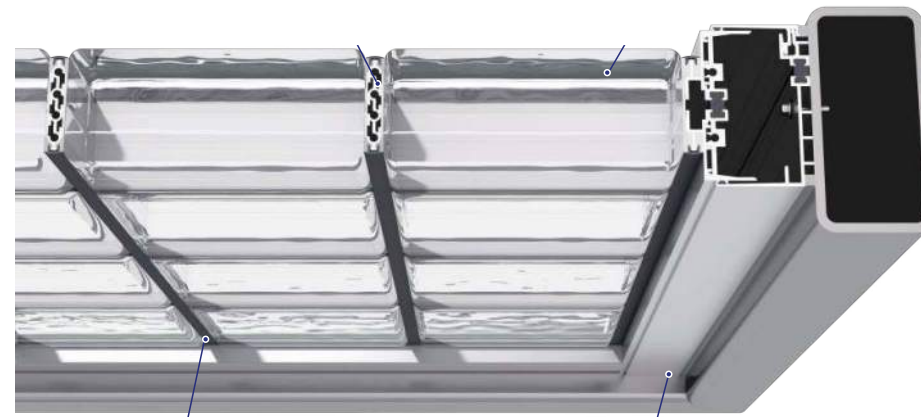
**SS AIRCRAFT CABLE**



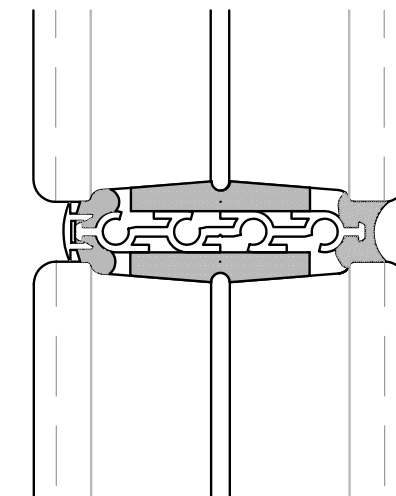
**STANDING SEAM ROOF**



**GRANITE - MATCH EXISTING**



**MORTARLESS  
GLASS BLOCKS 8x8**



**MORTARLESS  
GLASS BLOCKS 4x8**

MATERIAL PALETTE

ELLSWORTH-FEDERAL STATION

JUNE 25, 2024

A-28