

MM THE MARK

V1 06.10.2024

THE MARK AT PHILADELPHIA
EXTERIOR PROPERTY SIGNAGE RENDERING

INTERNAL USE ONLY



LOGOS



FONTS

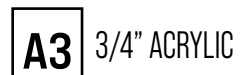
GOTHAM

Aa Bb Cc Dd Ee Ff Gg Hh Ii Jj Kk Ll Mm Nn Oo Pp Qq Rr Ss Tt Uu Vv Ww Xx Yy Zz 0 1 2 3 4 5 6 7 8 9

COLORS



MATERIALS



SITE MAP

NOT APPROVED FOR PRODUCTION

ACCOUNT MANAGER: Phillip Henry

DATE	VERSION	DSR
06.10.2024	1	JB

PAGE: 3

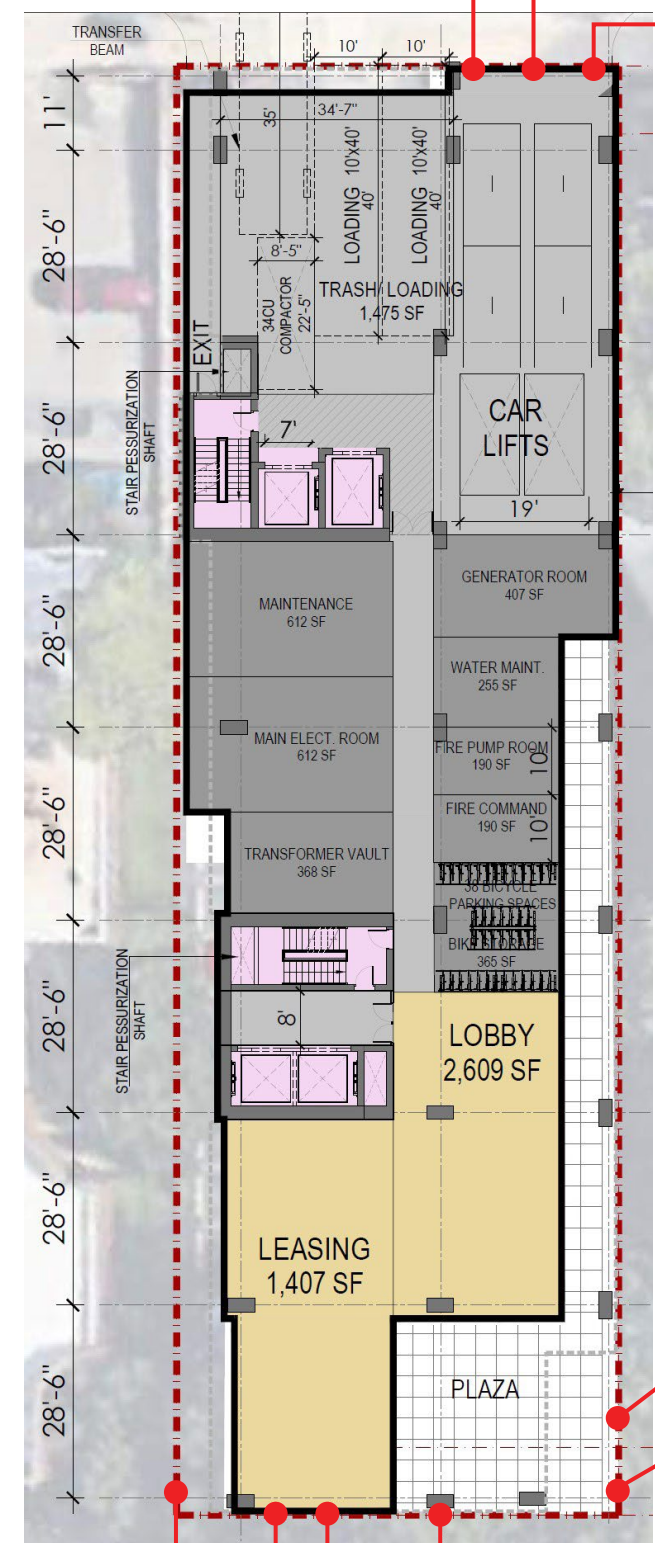
FILEPATH:
\\SBServer\Z\Jobs\Signature Clients\Landmark Properties\The Mark\The Mark at Philadelphia

DESIGN POLICY: Please check the proof for accuracy. Upon project & design approval, the customer releases The Sign Brothers, LLC from any errors appearing on the art that may be discovered after production or installation. All custom designs are property of The Sign Brothers, LLC and may not be duplicated without express written permission. The Sign Brothers, LLC hereby assert intellectual property rights for the designs contained herein. Please contact your project manager or design department with any questions.

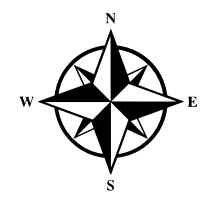
<p>SKY.1 SKYLINE BUILDING ID SIGN (EAST ELEVATION)</p>	<p>CAN.5 CANOPY SIGN (EAST ELEVATION)</p>
<p>SKY.2 SKYLINE BUILDING ID SIGN (NORTH ELEVATION)</p>	<p>EWS.6 EXTERIOR WALL SIGN (SOUTH ELEVATION)</p>
<p>SKY.3 SKYLINE BUILDING ID SIGN (WEST ELEVATION)</p>	<p>PBL PARKING BLADE SIGN (NORTH ELEVATION)</p>
<p>SKY.4 SKYLINE BUILDING ID SIGN (SOUTH ELEVATION)</p>	<p>PDE PARKING DECK ENTRANCE LETTERS (NORTH ELEVATION)</p>
<p>ADD STREET ADDRESS (EAST ELEVATION)</p>	<p>ADD STREET ADDRESS (EAST ELEVATION)</p>

PBL PARKING BLADE SIGN (NORTH ELEVATION)
PDE PARKING DECK ENTRANCE LETTERS (NORTH ELEVATION)
SKY.2 SKYLINE BUILDING ID SIGN (NORTH ELEVATION)

DESIGN SPECIFICATIONS	
IBC 2018 with PA amendments	
ASCE 7-16	Minimum Design Loads for Buildings & Other Structures
ACI 318-14	Building Code Requirements for Structural Concrete
ANSI/AISC 360-16	Specification for Structural Steel Buildings
DESIGN LOADS	
Wind	V = 115 mph
Exposure	C
Risk Cat.	II



CAN.5 CANOPY SIGN (EAST ELEVATION)
SKY.1 SKYLINE BUILDING ID SIGN (EAST ELEVATION)
ADD STREET ADDRESS (EAST ELEVATION)
EWS.6 EXTERIOR WALL SIGN (SOUTH ELEVATION)
SKY.4 SKYLINE BUILDING ID SIGN (SOUTH ELEVATION)
SKY.3 SKYLINE BUILDING ID SIGN (WEST ELEVATION)



LP - The Mark at Philadelphia
3615 Chestnut St, Philadelphia, PA 19104

EAST ELEVATION

NOT APPROVED FOR PRODUCTION

ACCOUNT MANAGER: Phillip Henry

DATE	VERSION	DSR
06.10.2024	1	JB

PAGE: 4

FILEPATH:
\\SBServer\Z\Jobs\Signature Clients\Landmark Properties\The Mark\The Mark at Philadelphia





195 Ben Burton Circle Bogart, GA 30622
1-833-SIGN-BROS | thesignbros.com

LP - The Mark at Philadelphia
3615 Chestnut St, Philadelphia, PA 19104

EAST ELEVATION
- GROUND FLOOR

NOT APPROVED FOR PRODUCTION

ACCOUNT MANAGER: Phillip Henry

DATE	VERSION	DSR
06.10.2024	1	JB

PAGE: 5
FILEPATH:
\\SBServer\Z\Jobs\Signature Clients\Landmark Properties\The Mark\The Mark at Philadelphia

DESIGN POLICY: Please check the proof for accuracy. Upon project & design approval, the customer releases The Sign Brothers, LLC from any errors appearing on the art that may be discovered after production or installation. All custom designs are property of The Sign Brothers, LLC and may not be duplicated without express written permission. The Sign Brothers, LLC hereby assert intellectual property rights for the designs contained herein. Please contact your project manager or design department with any questions.

LP - The Mark at Philadelphia
3615 Chestnut St, Philadelphia, PA 19104

NORTH ELEVATION

NOT APPROVED FOR PRODUCTION

ACCOUNT MANAGER: Phillip Henry

DATE	VERSION	DSR
06.10.2024	1	JB

PAGE: 6

FILEPATH:
\\SBServer\Z\Jobs\Signature Clients\Landmark Properties\The Mark\The Mark at Philadelphia

DESIGN POLICY: Please check the proof for accuracy. Upon project & design approval, the customer releases The Sign Brothers, LLC from any errors appearing on the art that may be discovered after production or installation. All custom designs are property of The Sign Brothers, LLC and may not be duplicated without express written permission. The Sign Brothers, LLC hereby assert intellectual property rights for the designs contained herein. Please contact your project manager or design department with any questions.





195 Ben Burton Circle Bogart, GA 30622
1-833-SIGN-BROS | thesignbros.com

LP - The Mark at Philadelphia
3615 Chestnut St, Philadelphia, PA 19104

NORTH ELEVATION
GROUND FLOOR

NOT APPROVED FOR PRODUCTION

ACCOUNT MANAGER: Phillip Henry

DATE	VERSION	DSR
06.10.2024	1	JB

PAGE: 7

FILEPATH:
\\SBServer\Z\Jobs\Signature Clients\Landmark Properties\The Mark\The Mark at Philadelphia

DESIGN POLICY: Please check the proof for accuracy. Upon project & design approval, the customer releases The Sign Brothers, LLC from any errors appearing on the art that may be discovered after production or installation. All custom designs are property of The Sign Brothers, LLC and may not be duplicated without express written permission. The Sign Brothers, LLC hereby assert intellectual property rights for the designs contained herein. Please contact your project manager or design department with any questions.



195 Ben Burton Circle Bogart, GA 30622
1-833-SIGN-BROS | thesignbros.com

LP - The Mark at Philadelphia
3615 Chestnut St, Philadelphia, PA 19104

EAST ELEVATION

NOT APPROVED FOR PRODUCTION

ACCOUNT MANAGER: Phillip Henry

DATE	VERSION	DSR
06.10.2024	1	JB

PAGE: 8

FILEPATH:
\\SBServer\Z\Jobs\Signature Clients\Landmark Properties\The Mark\The Mark at Philadelphia

DESIGN POLICY: Please check the proof for accuracy. Upon project & design approval, the customer releases The Sign Brothers, LLC from any errors appearing on the art that may be discovered after production or installation. All custom designs are property of The Sign Brothers, LLC and may not be duplicated without express written permission. The Sign Brothers, LLC hereby assert intellectual property rights for the designs contained herein. Please contact your project manager or design department with any questions.

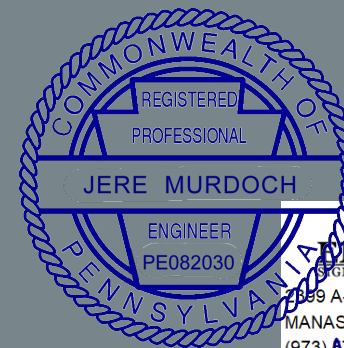
DESIGN SPECIFICATIONS	
IBC 2018 with PA amendments	
ASCE 7-16	Minimum Design Loads for Buildings & Other Structures
ACI 318-14	Building Code Requirements for Structural Concrete
ANSI/AISC 360-16	Specification for Structural Steel Buildings
DESIGN LOADS	
Wind	V = 115 mph
Exposure	C
Risk Cat.	II

MM THE MARK

V3 10.20.2023

THE MARK AT PHILADELPHIA
EXTERIOR PROPERTY SIGNAGE

INTERNAL USE ONLY



MURDOCH ENGINEERING
SIGN STRUCTURE PROFESSIONALS

BB9 A-2 NJ-34
MANASQUAN, NJ 08736
(973) 870-8215

Jere Murdoch 10/26/2023

Jere Murdoch, PE
Professional Engineer
PA PE Lic. #PE082030



LOGOS



FONTS

GOTHAM

Aa Bb Cc Dd Ee Ff Gg Hh Ii Jj Kk Ll Mm Nn Oo Pp Qq Rr Ss Tt Uu Vv Ww Xx Yy Zz 0 1 2 3 4 5 6 7 8 9

COLORS



DESIGN SPECIFICATIONS	
IBC 2018	with PA amendments
ASCE 7-16	Minimum Design Loads for Buildings & Other Structures
ACI 318-14	Building Code Requirements for Structural Concrete
ANSI/AISC 360-16	Specification for Structural Steel Buildings
DESIGN LOADS	
Wind	V = 115 mph
Exposure	C
Risk Cat.	II

MATERIALS

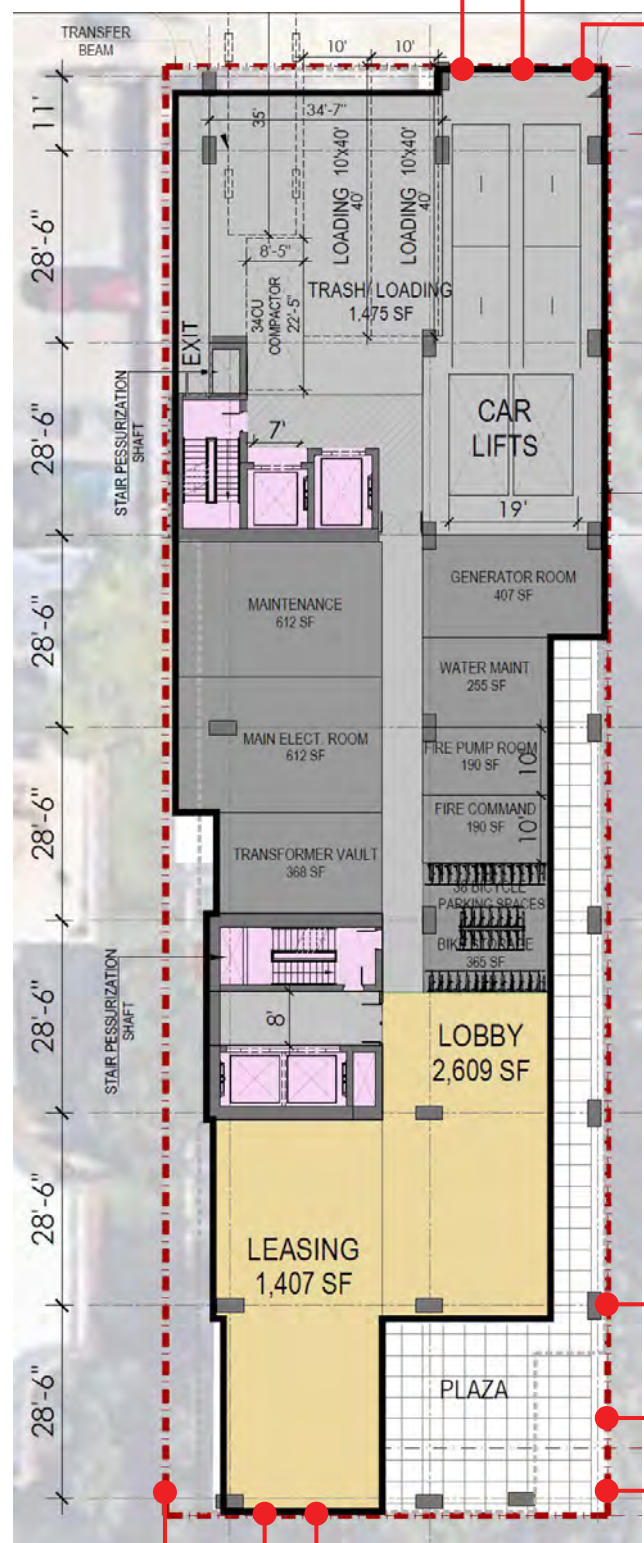
- D1** DIGITALLY PRINTED VINYL
- M1** 0.080" ALUMINUM
- A1** 3/16" ACRYLIC
- P1** MATTHEWS PAINT - BLACK
- A2** 1/2" ACRYLIC
- P2** MATTHEWS PAINT - WHITE
- A3** 3/4" ACRYLIC
- F** FLEX FACE

MURDOCH ENGINEERING
STRUCTURE PROFESSIONALS
2099 NJ-34
HASQUAN, NJ 08736
(973) 870-8215 x0

Jere Murdoch 10/26/2023
Jere Murdoch, PE
Professional Engineer
PA PE Lic. #PE082030

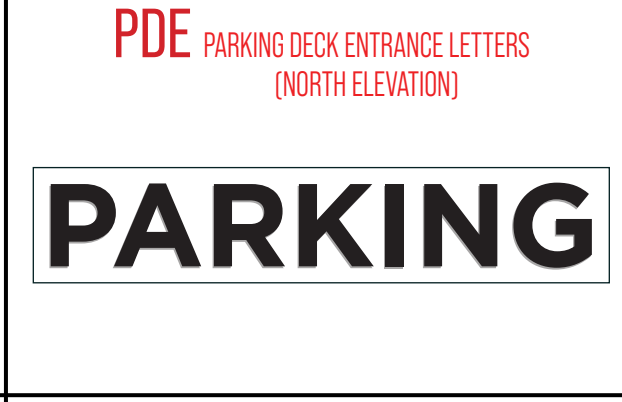
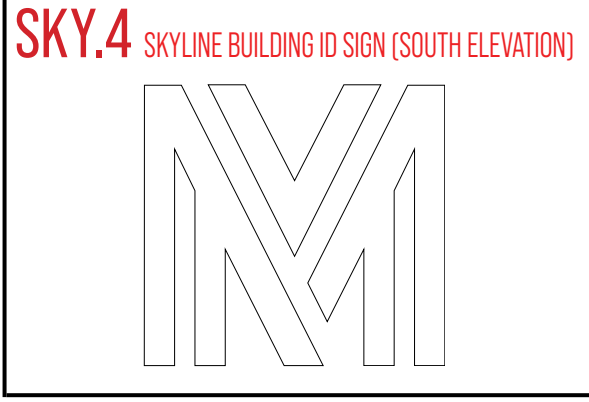
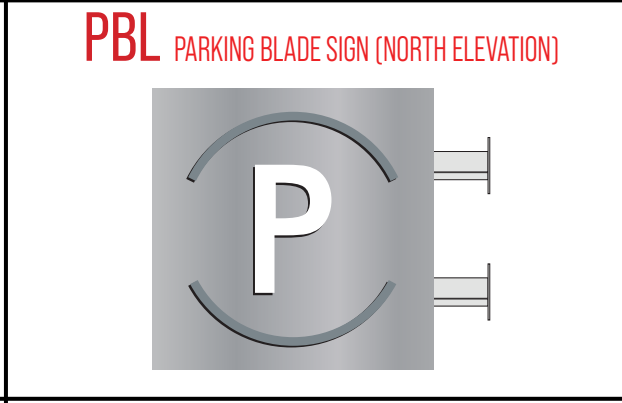
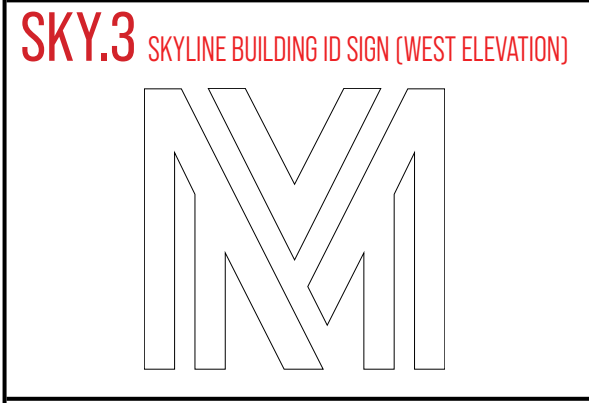
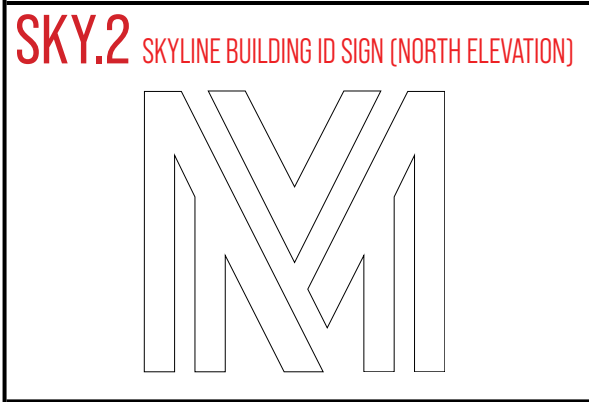
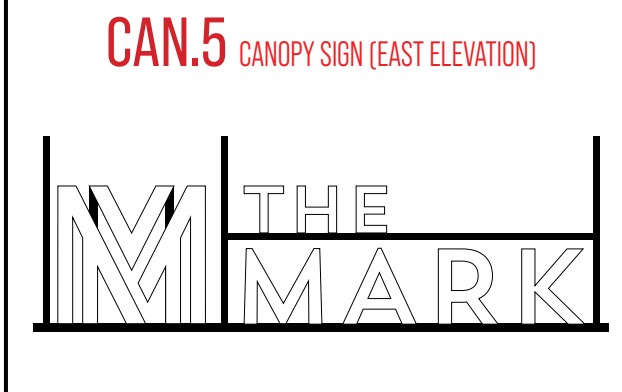
LP - The Mark at Philadelphia
3615 Chestnut St, Philadelphia, PA 19104

SITE MAP
PROJECT NAME

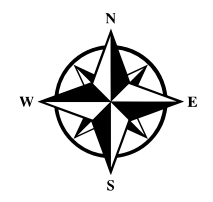


- PBL PARKING BLADE SIGN (NORTH ELEVATION)
- PDE PARKING DECK ENTRANCE LETTERS (NORTH ELEVATION)
- SKY.2 SKYLINE BUILDING ID SIGN (NORTH ELEVATION)

DESIGN SPECIFICATIONS	
IBC 2018	with PA amendments
ASCE 7-16	Minimum Design Loads for Buildings & Other Structures
ACI 318-14	Building Code Requirements for Structural Concrete
ANSI/AISC 360-16	Specification for Structural Steel Buildings
DESIGN LOADS	
Wind	V = 115 mph
Exposure	C
Risk Cat.	II



- ADD STREET ADDRESS (EAST ELEVATION)
- CAN.5 CANOPY SIGN (EAST ELEVATION)
- SKY.1 SKYLINE BUILDING ID SIGN (EAST ELEVATION)
- EWS.6 EXTERIOR WALL SIGN (SOUTH ELEVATION)
- SKY.4 SKYLINE BUILDING ID SIGN (SOUTH ELEVATION)
- SKY.3 SKYLINE BUILDING ID SIGN (WEST ELEVATION)



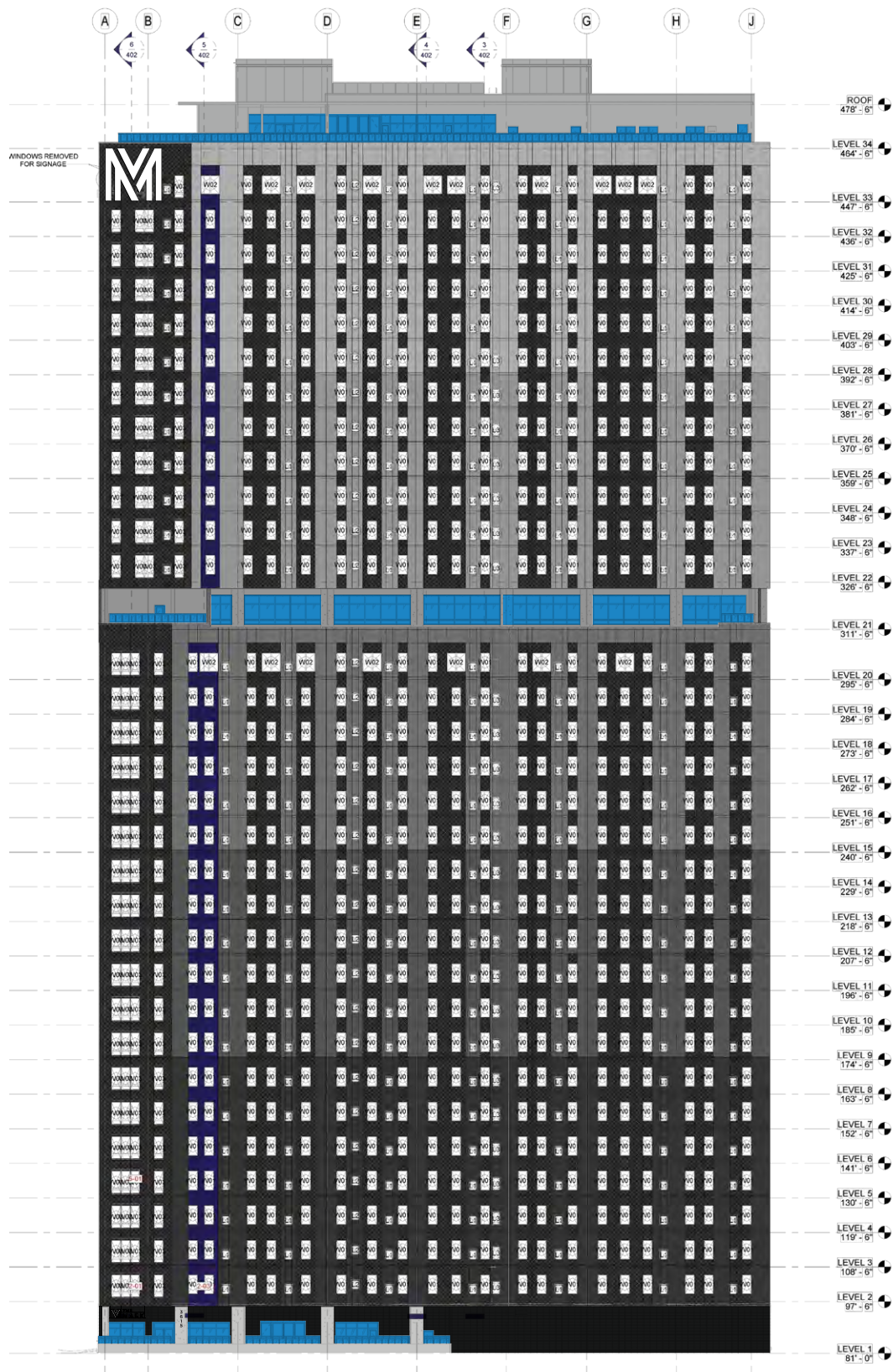
ACCOUNT MANAGER: Phillip Henry

DATE	VERSION	DSR
10.06.2022	1	JB
02.16.2023	2	JB
10.20.2023	3	JB

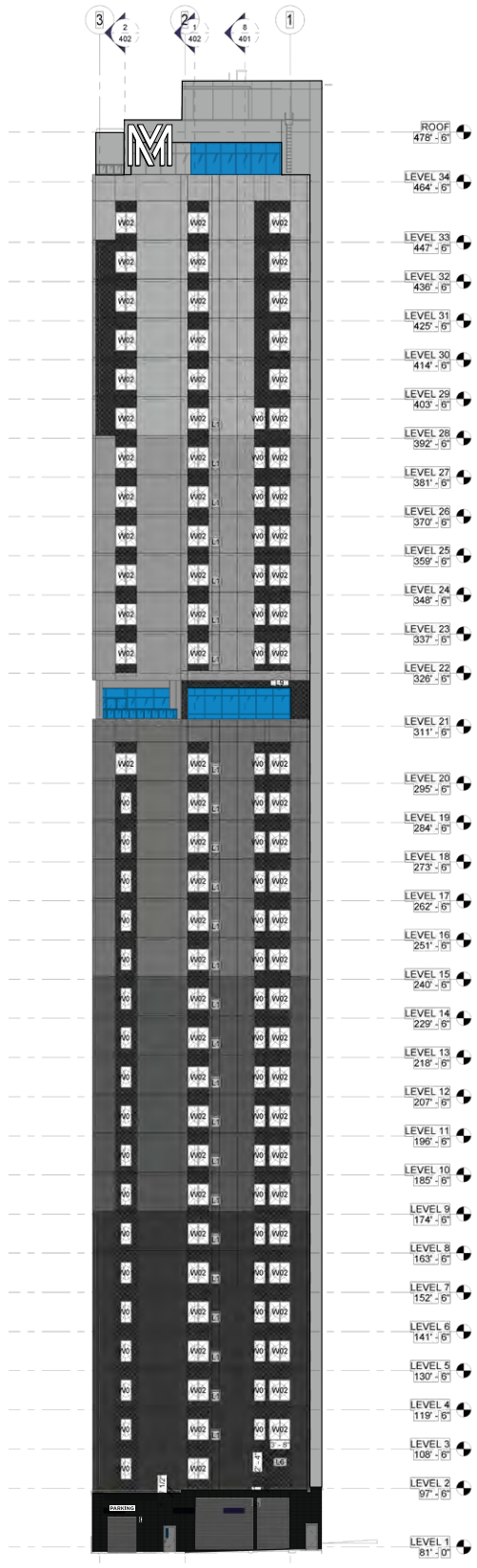
PAGE: 3
FILEPATH: \\SBServer\Z\Jobs\Signature Clients\Landmark Properties\The Mark\The Mark at Philadelphia

DESIGN POLICY: Please check the proof for accuracy. Upon project & design approval, the customer releases The Sign Brothers, LLC from any errors appearing on the art that may be discovered after production or installation. All custom designs are property of The Sign Brothers, LLC and may not be duplicated without express written permission. The Sign Brothers, LLC hereby assert intellectual property rights for the designs contained herein. Please contact your project manager or design department with any questions.

DESIGN SPECIFICATIONS	
IBC 2018 with PA amendments	
ASCE 7-16 Minimum Design Loads for Buildings & Other Structures	
ACI 318-14 Building Code Requirements for Structural Concrete	
ANSI/AISC 360-16 Specification for Structural Steel Buildings	
DESIGN LOADS	
Wind Exposure	V = 115 mph C
Risk Cat.	II



EAST ELEVATION



NORTH ELEVATION

SIGN TYPE PLACEMENT

FOR PERMITS ONLY



2399 A-2 NJ-34
 MANASQUAN, NJ 08736
 (973) 870-8215 x0
Jere Murdoch 10/26/2023
Jere Murdoch, PE
 Professional Engineer
 PA PE Lic. #PE082030

LP - The Mark at Philadelphia
 3615 Chestnut St, Philadelphia, PA 19104

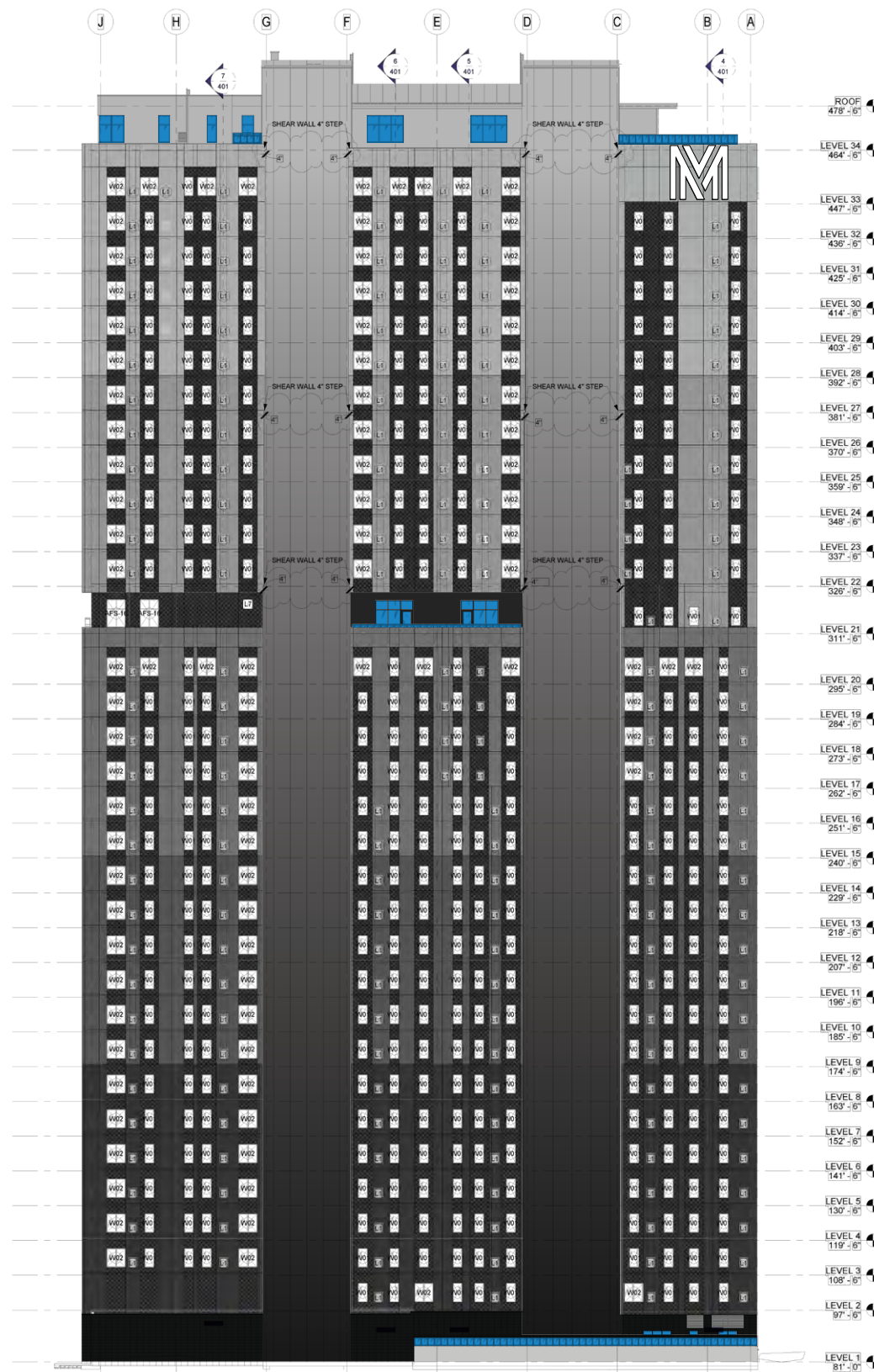
ACCOUNT MANAGER: Phillip Henry

DATE	VERSION	DSR
10.06.2022	1	JB
02.16.2023	2	JB
10.20.2023	3	JB

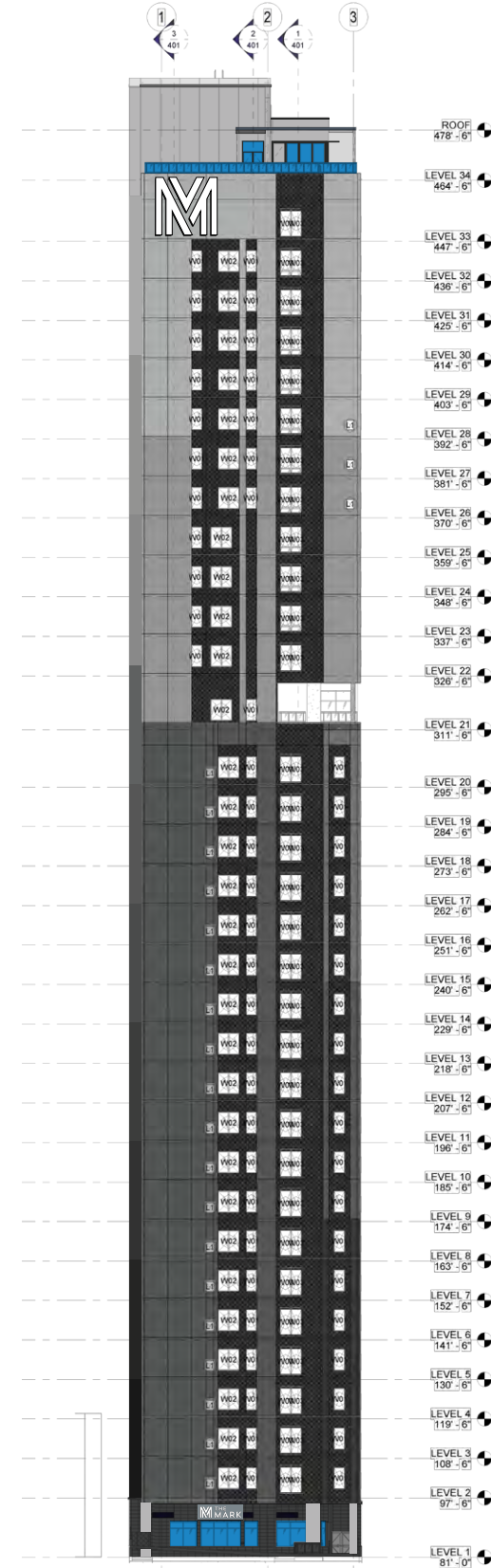
PAGE: 4
 FILEPATH:
 \\SBServer\Z\Jobs\Signature Clients\Landmark Properties\The Mark\The Mark at Philadelphia

DESIGN POLICY: Please check the proof for accuracy. Upon project & design approval, the customer releases The Sign Brothers, LLC from any errors appearing on the art that may be discovered after production or installation. All custom designs are property of The Sign Brothers, LLC and may not be duplicated without express written permission. The Sign Brothers, LLC hereby assert intellectual property rights for the designs contained herein. Please contact your project manager or design department with any questions.

DESIGN SPECIFICATIONS	
IBC 2018 with PA amendments	
ASCE 7-16 Minimum Design Loads for Buildings & Other Structures	
ACI 318-14 Building Code Requirements for Structural Concrete	
ANSI/AISC 360-16 Specification for Structural Steel Buildings	
DESIGN LOADS	
Wind V = 115 mph	
Exposure C	
Risk Cat. II	



WEST ELEVATION



SOUTH ELEVATION

SIGN TYPE PLACEMENT

FOR PERMITS ONLY

Jere Murdoch, PE
 Professional Engineer
 PE Lic. #PE082030
 10/26/2023

LP - The Mark at Philadelphia
 3615 Chestnut St, Philadelphia, PA 19104

ACCOUNT MANAGER: Phillip Henry

DATE	VERSION	DSR
10.06.2022	1	JB
02.16.2023	2	JB
10.20.2023	3	JB

PAGE: 5
 FILEPATH:
 \\SBServer\Z\Jobs\Signature Clients\Landmark Properties\The Mark\The Mark at Philadelphia

DESIGN POLICY: Please check the proof for accuracy. Upon project & design approval, the customer releases The Sign Brothers, LLC from any errors appearing on the art that may be discovered after production or installation. All custom designs are property of The Sign Brothers, LLC and may not be duplicated without express written permission. The Sign Brothers, LLC hereby assert intellectual property rights for the designs contained herein. Please contact your project manager or design department with any questions.



195 Ben Burton Circle Bogart, GA 30622
1-833-SIGN-BROS | thesignbros.com

LP - The Mark at Philadelphia
3615 Chestnut St, Philadelphia, PA 19104

SKY.1
SKYLINE BUILDING ID SIGN
(EAST ELEVATION)

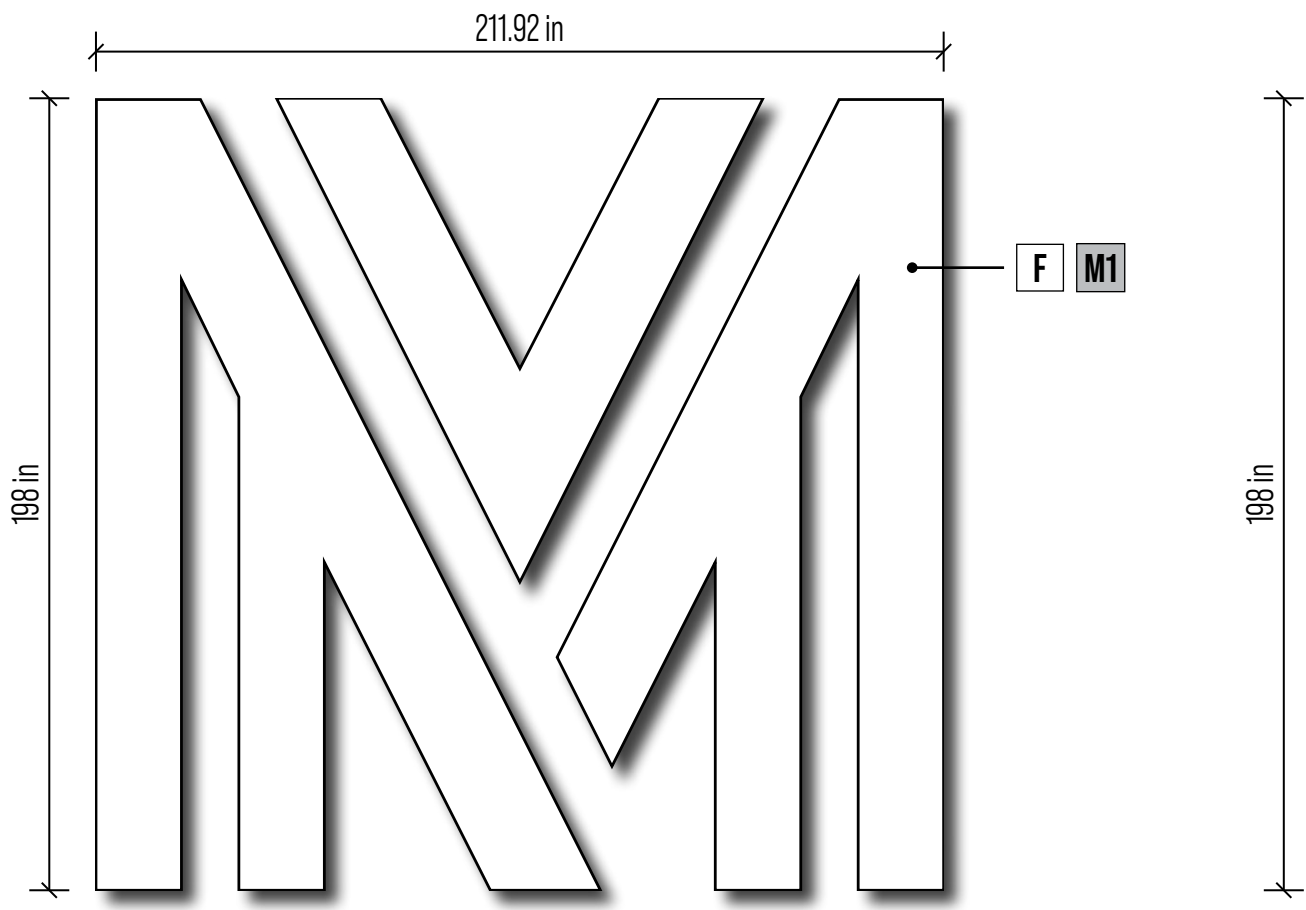
QTY: 1
ACCOUNT MANAGER: Phillip Henry

DATE	VERSION	DSR
10.06.2022	1	JB
02.16.2023	2	JB
10.20.2023	3	JB

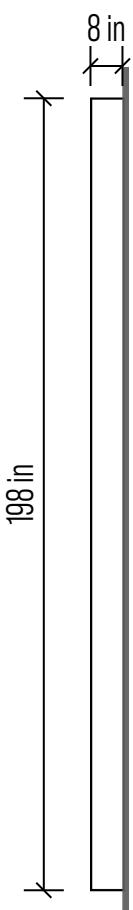
PAGE: 6
FILEPATH:
\\SBServer\Z\Jobs\Signature Clients\Landmark Properties\The Mark\The Mark at Philadelphia

DESIGN POLICY: Please check the proof for accuracy. Upon project & design approval, the customer releases The Sign Brothers, LLC from any errors appearing on the art that may be discovered after production or installation. All custom designs are property of The Sign Brothers, LLC and may not be duplicated without express written permission. The Sign Brothers, LLC hereby assert intellectual property rights for the designs contained herein. Please contact your project manager or design department with any questions.

DESIGN SPECIFICATIONS	
IBC 2018 with PA amendments	
ASCE 7-16	Minimum Design Loads for Buildings & Other Structures
ACI 318-14	Building Code Requirements for Structural Concrete
ANSI/AISC 360-16	Specification for Structural Steel Buildings
DESIGN LOADS	
Wind	V = 115 mph
Exposure	C
Risk Cat.	II



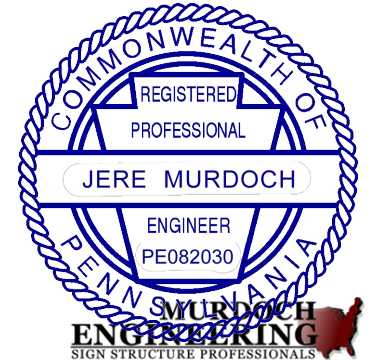
- ELECTRICAL REQUIREMENTS**
- 120V 20A CIRCUIT REQUIRED.
 - UL LABELS REQUIRED AWAY FROM PUBLIC VIEW.
 - ALL ELECTRICAL PRIMARY CIRCUITS MUST BE DEDICATED ISOLATED CIRCUITS PROVIDED BY CLIENT.
 - GC TO PROVIDE ACCESSIBILITY TO REMOTE TRANSFORMER LOCATION FOR INSTALLATION AND SERVICE.
 - ALL ELECTRICAL RUNS AND INTERNAL CONNECTIONS TO BE DONE BY CERTIFIED ELECTRICIAN. SB WILL MAKE FINAL CONNECTION TO SIGN; POWER MUST BE SHUT OFF FOR FINAL CONNECTION.



SCALE: 1/4" = 1'
PROPOSED SIGN FACE: 291.39 ft²
SCOPE:
1. MANUFACTURE AND INSTALL (1) CABINET SIGN WITH WHITE FLEX FACE AND WHITE RETURNS.

SIDE VIEW
SCALE: 1/4" = 1'

SEE SIGN FRAME & MOUNTING DETAIL ON PG. 18



2399 A-2 NJ-34
MANASQUAN, NJ 08736
(973) 870-8215 x0
Jere Murdoch 10/26/2023
Jere Murdoch, PE
Professional Engineer
PA PE Lic. #PE082030

MATERIALS & COLORS

M1	0.080" ALUMINUM
F	FLEX FACE

SIGN CODE: ILLUMINATED SKYLINE SIGN

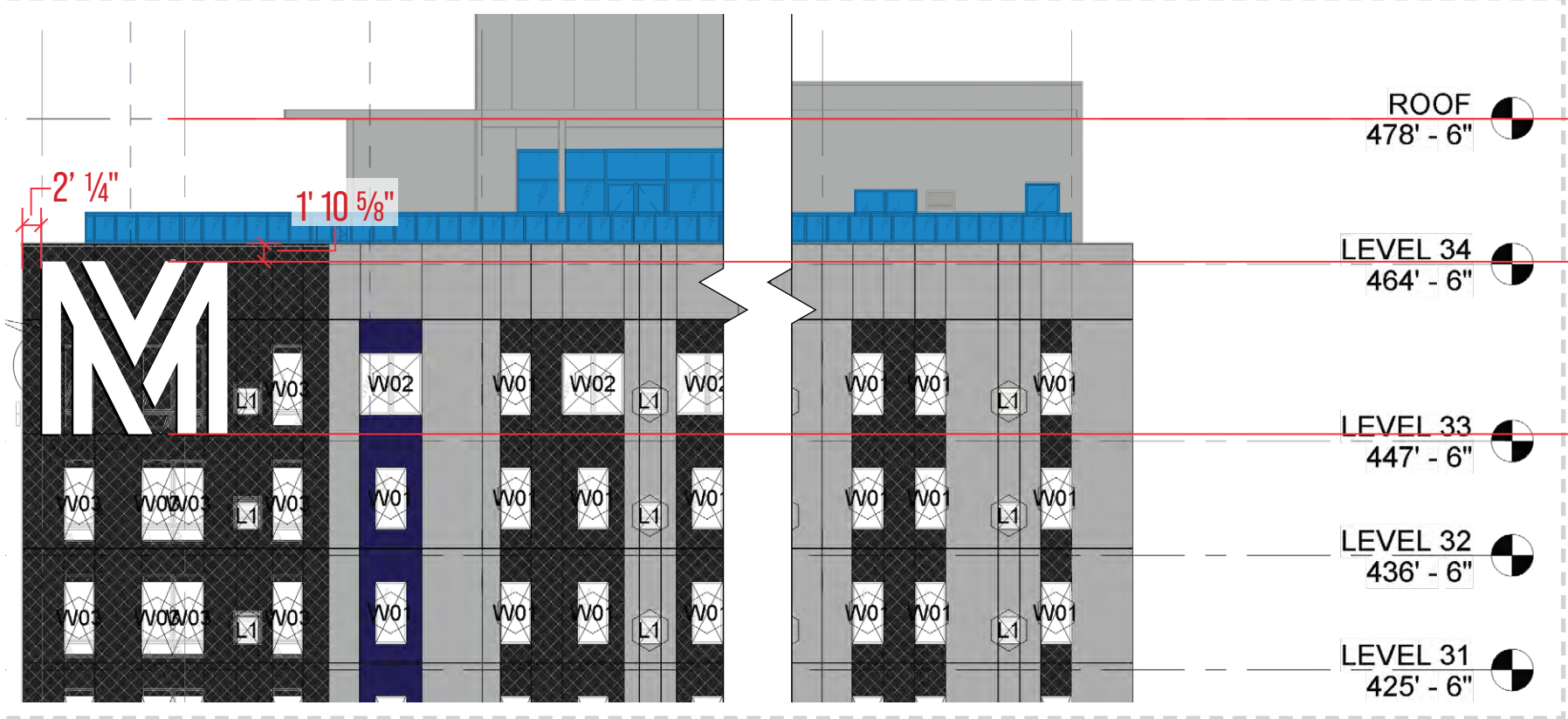
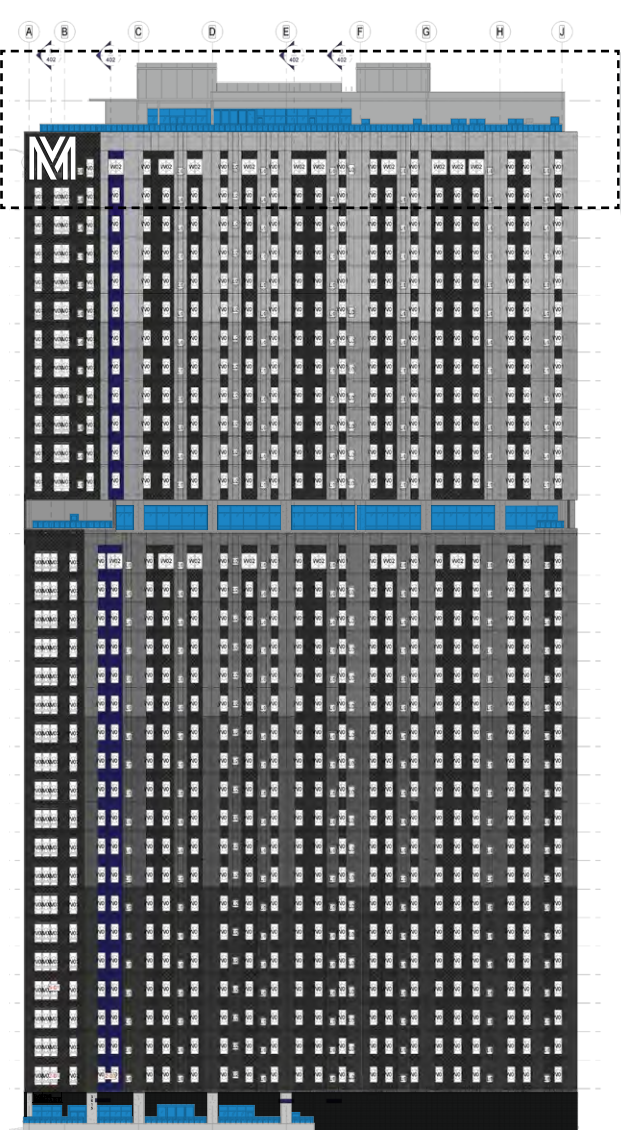
- MAX MOUNTING HEIGHT: MAY NOT EXCEED THE BUILDING ROOFLINE.
- MINIMUM MOUNTING HEIGHT: BOTTOM EDGE OF SIGN MUST BE HIGHER THAN 150' ABOVE GRADE.
- SIGN FACE SQ. FOOTAGE (ALLOWED): N/A. SUBJECT TO ART COMMISSION APPROVAL.

- ILLUMINATION: INTERNAL

FOR PERMITS ONLY

LP - The Mark at Philadelphia
3615 Chestnut St, Philadelphia, PA 19104

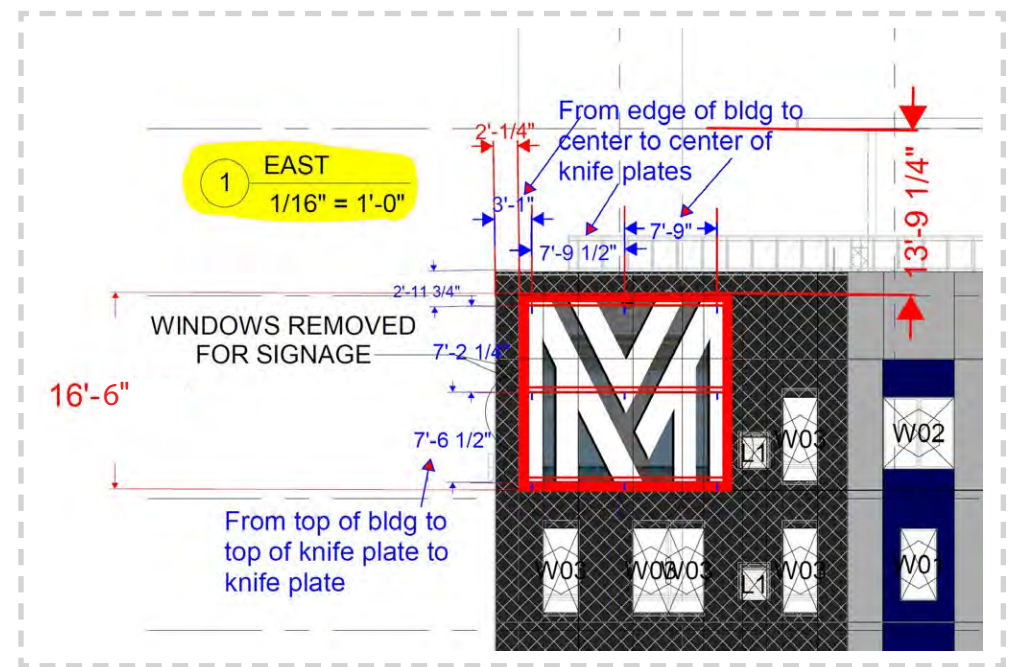
SKY.1
SKYLINE BUILDING ID SIGN
(EAST ELEVATION)



EAST ELEVATION
SCALE: 1/16" = 1'

DESIGN SPECIFICATIONS	
IBC 2018	with PA amendments
ASCE 7-16	Minimum Design Loads for Buildings & Other Structures
ACI 318-14	Building Code Requirements for Structural Concrete
ANSI/AISC 360-16	Specification for Structural Steel Buildings
DESIGN LOADS	
Wind	V = 115 mph
Exposure	C
Risk Cat.	II

EAST ELEVATION
SCALE: NTS



EAST ELEVATION
SCALE: 1/16" = 1'

MURDOCH ENGINEERING
SIGN STRUCTURE PROFESSIONALS
2395 A-2 NJ-34
MANTASQUAN, NJ 08736
(973) 470-8215 x0
Jere Murdoch, PE
Professional Engineer
PA PE Lic. #PE082030

MATERIALS & COLORS

M1	0.080" ALUMINUM
F	FLEX FACE

SIGN CODE: ILLUMINATED SKYLINE SIGN

- MAX MOUNTING HEIGHT: MAY NOT EXCEED THE BUILDING ROOFLINE.
- MINIMUM MOUNTING HEIGHT: BOTTOM EDGE OF SIGN MUST BE HIGHER THAN 150' ABOVE GRADE.
- SIGN FACE SQ. FOOTAGE (ALLOWED): N/A. SUBJECT TO ART COMMISSION APPROVAL.
- ILLUMINATION: INTERNAL

FOR PERMITS ONLY

QTY: 1
ACCOUNT MANAGER: Phillip Henry

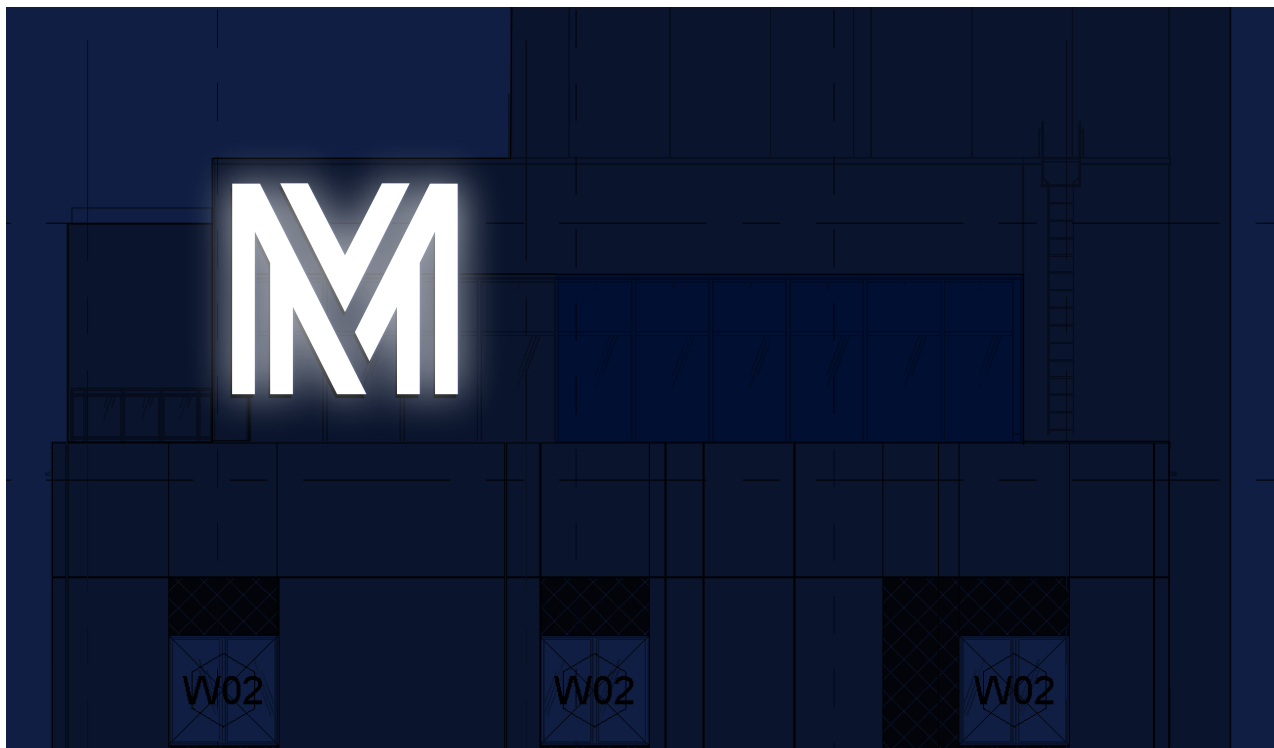
DATE	VERSION	DSR
10.06.2022	1	JB
02.16.2023	2	JB
10.20.2023	3	JB

PAGE: 7
FILEPATH:
\\SBServer\Z\Jobs\Signature Clients\Landmark Properties\The Mark at Philadelphia

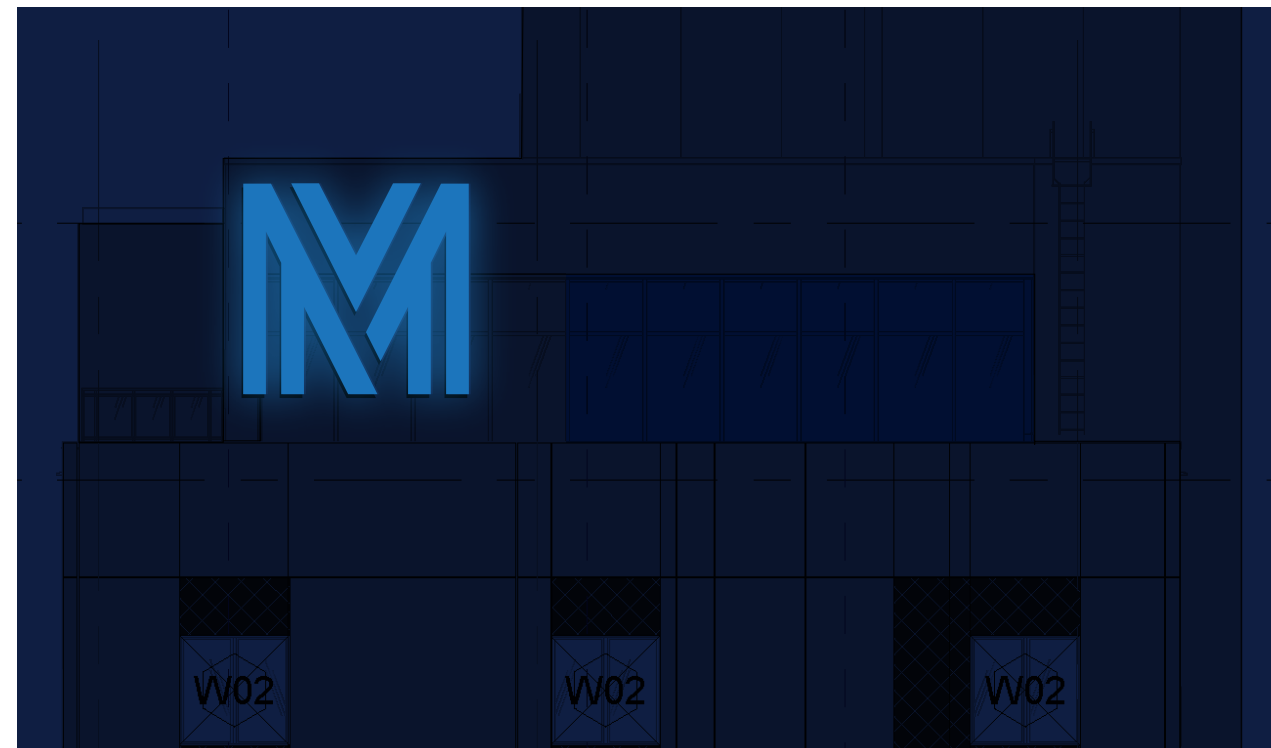
DESIGN POLICY: Please check the proof for accuracy. Upon project & design approval, the customer releases The Sign Brothers, LLC from any errors appearing on the art that may be discovered after production or installation. All custom designs are property of The Sign Brothers, LLC and may not be duplicated without express written permission. The Sign Brothers, LLC hereby assert intellectual property rights for the designs contained herein. Please contact your project manager or design department with any questions.

LP - The Mark at Philadelphia
3615 Chestnut St, Philadelphia, PA 19104

SKY.1
SKYLINE BUILDING ID SIGN
(EAST ELEVATION)



NIGHT VIEW - STANDARD



NIGHT VIEW - BLUE



NIGHT VIEW - GREEN



NIGHT VIEW - RED

MATERIALS & COLORS

- M1** 0.080" ALUMINUM
- F** FLEX FACE

SIGN CODE: ILLUMINATED SKYLINE SIGN

- MAX MOUNTING HEIGHT: MAY NOT EXCEED THE BUILDING ROOFLINE.
- MINIMUM MOUNTING HEIGHT: BOTTOM EDGE OF SIGN MUST BE HIGHER THAN 150' ABOVE GRADE.
- SIGN FACE SQ. FOOTAGE (ALLOWED): N/A. SUBJECT TO ART COMMISSION APPROVAL.
- ILLUMINATION: INTERNAL

FOR PERMITS ONLY

QTY: 1

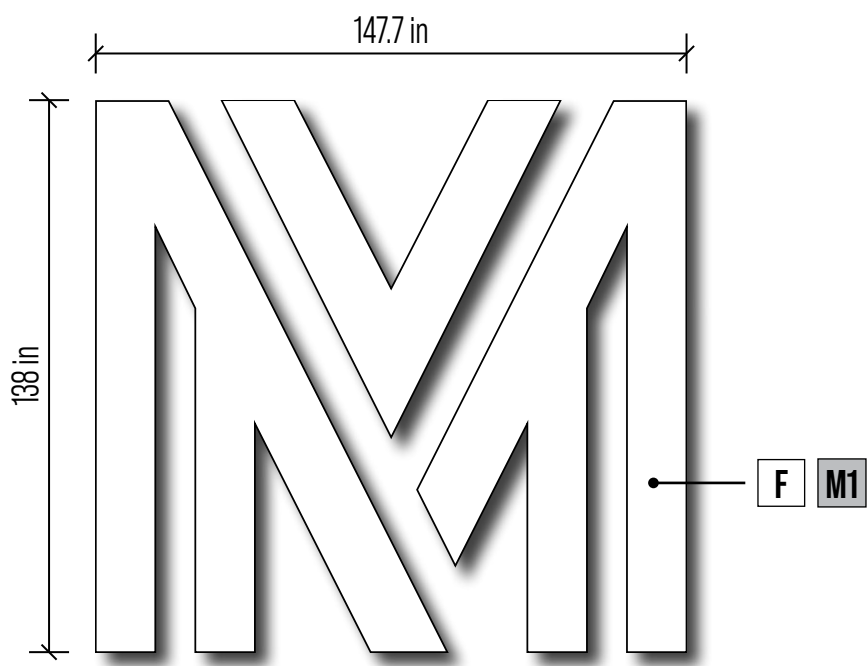
ACCOUNT MANAGER: Phillip Henry

DATE	VERSION	DSR
10.06.2022	1	JB
02.16.2023	2	JB
10.20.2023	3	JB

PAGE: 8

FILEPATH:
\\SBServer\Z\Jobs\Signature Clients\Landmark Properties\The Mark\The Mark at Philadelphia

DESIGN POLICY: Please check the proof for accuracy. Upon project & design approval, the customer releases The Sign Brothers, LLC from any errors appearing on the art that may be discovered after production or installation. All custom designs are property of The Sign Brothers, LLC and may not be duplicated without express written permission. The Sign Brothers, LLC hereby assert intellectual property rights for the designs contained herein. Please contact your project manager or design department with any questions.



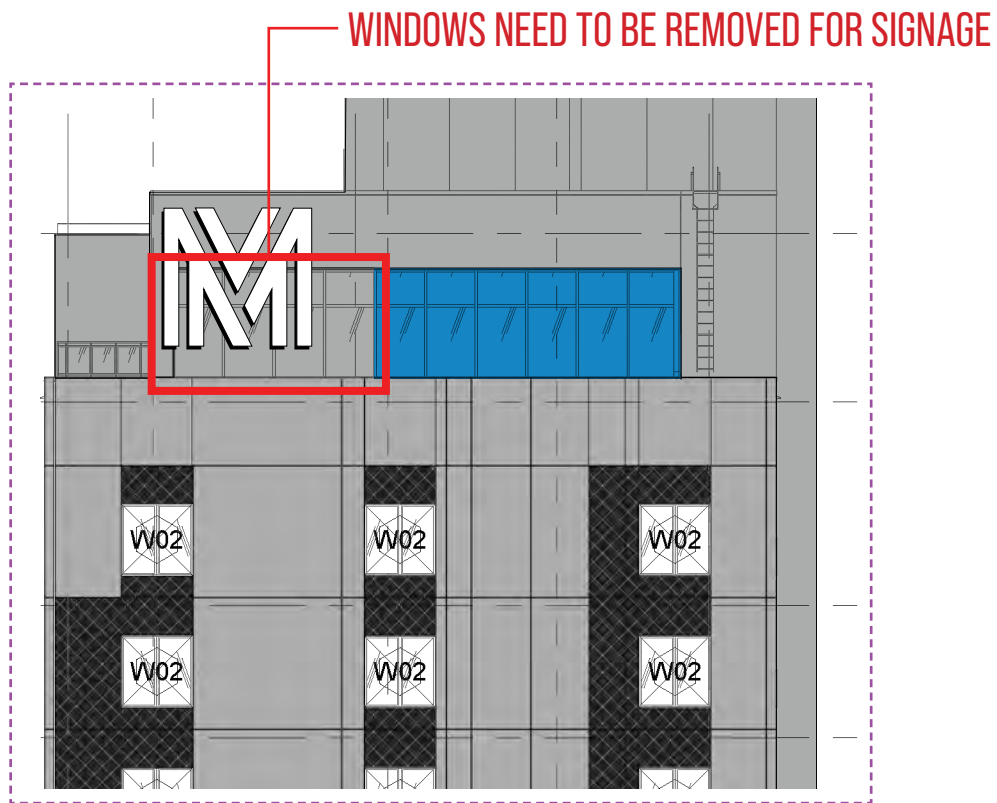
SCALE: 1/4" = 1' PROPOSED SIGN FACE: 141.55 ft²

SCOPE:
1. MANUFACTURE AND INSTALL (1) CABINET SIGN WITH WHITE FLEX FACE AND WHITE RETURNS.



SIDE VIEW
SCALE: 1/4" = 1'

- ELECTRICAL REQUIREMENTS**
- 120V 20A CIRCUIT REQUIRED.
 - UL LABELS REQUIRED AWAY FROM PUBLIC VIEW.
 - ALL ELECTRICAL PRIMARY CIRCUITS MUST BE DEDICATED ISOLATED CIRCUITS PROVIDED BY CLIENT.
 - GC TO PROVIDE ACCESSIBILITY TO REMOTE TRANSFORMER LOCATION FOR INSTALLATION AND SERVICE.
 - ALL ELECTRICAL RUNS AND INTERNAL CONNECTIONS TO BE DONE BY CERTIFIED ELECTRICIAN. SB WILL MAKE FINAL CONNECTION TO SIGN; POWER MUST BE SHUT OFF FOR FINAL CONNECTION.



MOUNTING ISSUE

DESIGN SPECIFICATIONS	
IBC 2018	with PA amendments
ASCE 7-16	Minimum Design Loads for Buildings & Other Structures
ACI 318-14	Building Code Requirements for Structural Concrete
ANSI/AISC 360-16	Specification for Structural Steel Buildings
DESIGN LOADS	
Wind	V = 115 mph
Exposure	C
Risk Cat.	II

SEE SIGN FRAME & MOUNTING DETAIL ON PG. 18



2399 A-2 NJ-34
MANASQUAN, NJ 08736
(973) 870-8215 x0
Jere Murdoch 10/26/2023
Jere Murdoch, PE
Professional Engineer
PA PE Lic. #PE082030

QTY: 1
ACCOUNT MANAGER: Phillip Henry

DATE	VERSION	DSR
10.06.2022	1	JB
02.16.2023	2	JB
10.20.2023	3	JB

PAGE: 9
FILEPATH:
\\SBServer\Z\Jobs\Signature Clients\Landmark Properties\The Mark\The Mark at Philadelphia

MATERIALS & COLORS

M1	0.080" ALUMINUM
F	FLEX FACE

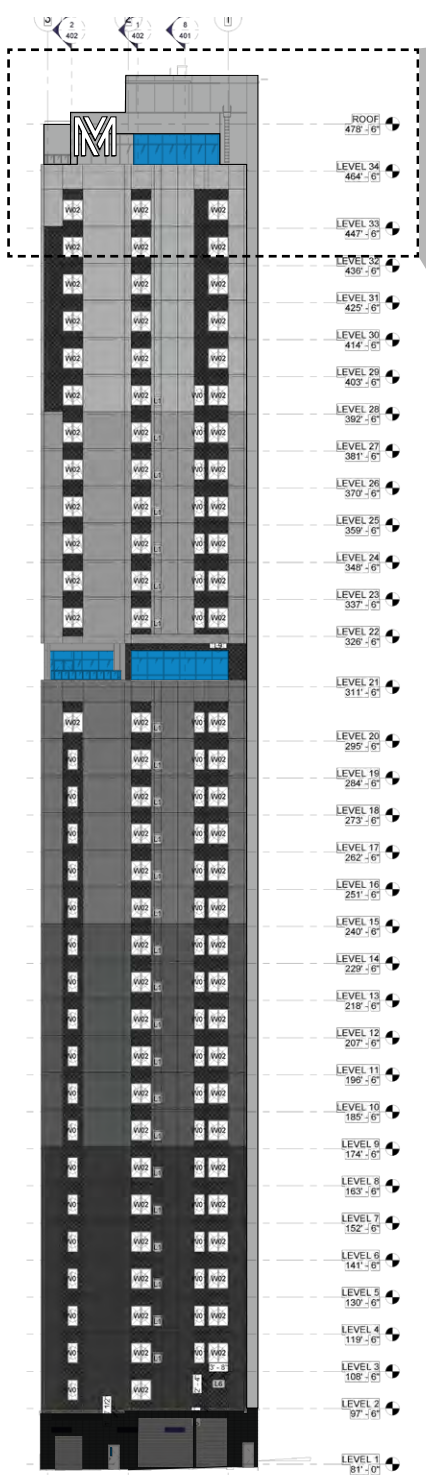
SIGN CODE: ILLUMINATED SKYLINE SIGN

- MAX MOUNTING HEIGHT: MAY NOT EXCEED THE BUILDING ROOFLINE. - ILLUMINATION: INTERNAL
- MINIMUM MOUNTING HEIGHT: BOTTOM EDGE OF SIGN MUST BE HIGHER THAN 150' ABOVE GRADE
- SIGN FACE SQ. FOOTAGE (ALLOWED): N/A. SUBJECT TO ART COMMISSION APPROVAL.

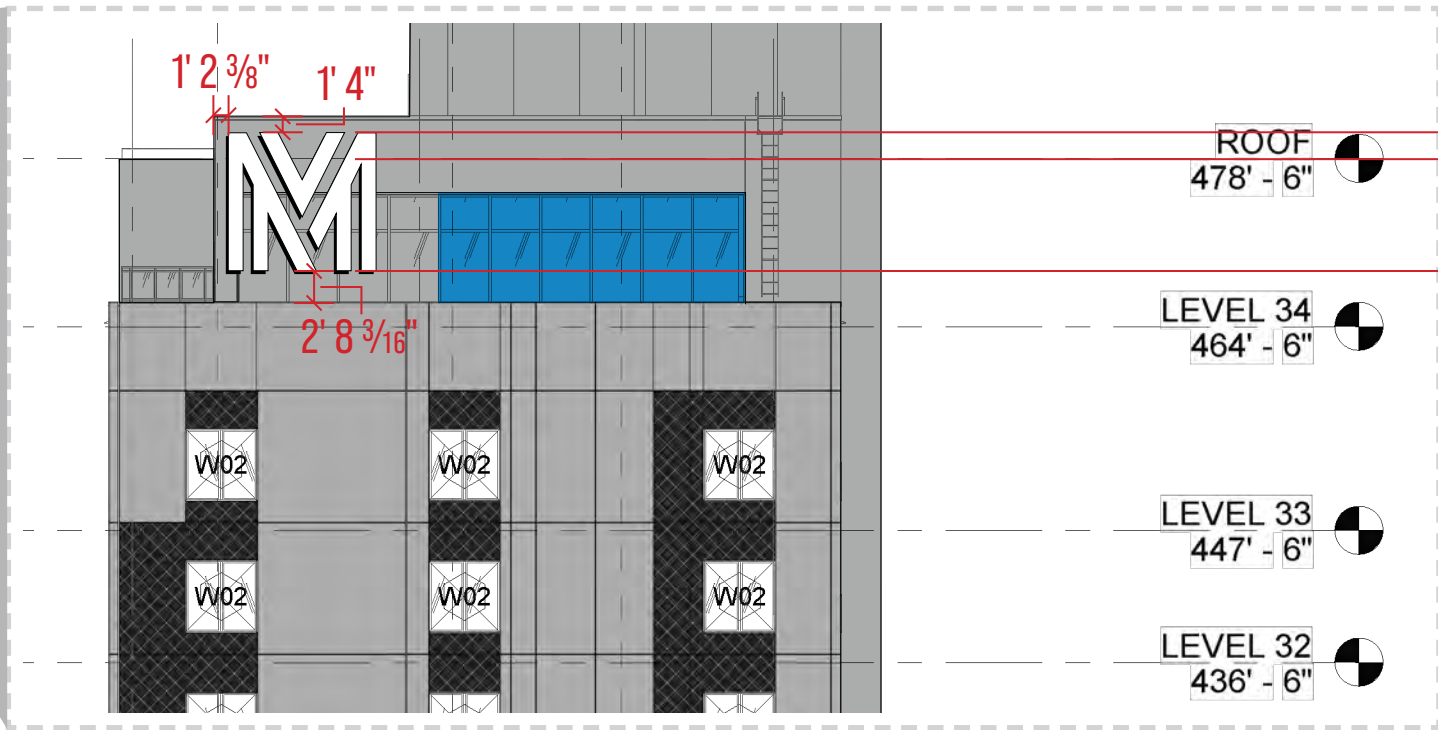
DESIGN POLICY: Please check the proof for accuracy. Upon project & design approval, the customer releases The Sign Brothers, LLC from any errors appearing on the art that may be discovered after production or installation. All custom designs are property of The Sign Brothers, LLC and may not be duplicated without express written permission. The Sign Brothers, LLC hereby assert intellectual property rights for the designs contained herein. Please contact your project manager or design department with any questions.

LP - The Mark at Philadelphia
3615 Chestnut St, Philadelphia, PA 19104

SKYLINE BUILDING ID SIGN
SKY.2
(NORTH ELEVATION)

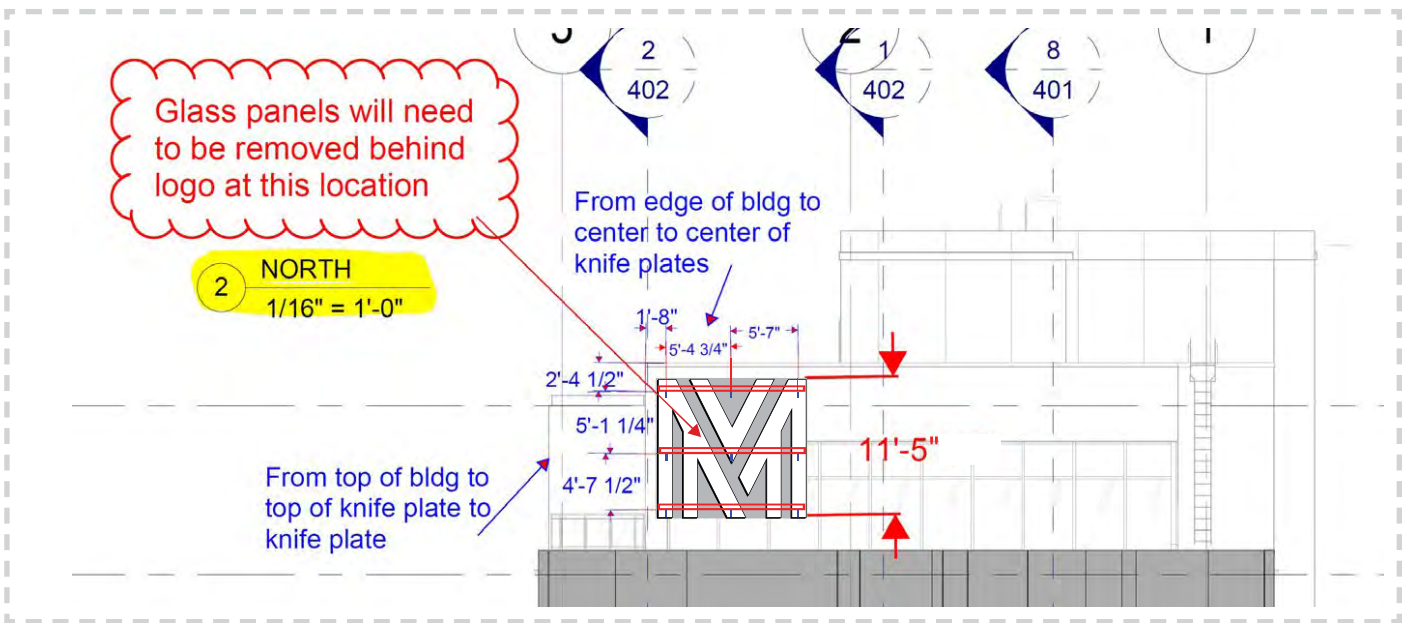


NORTH ELEVATION
SCALE: NTS

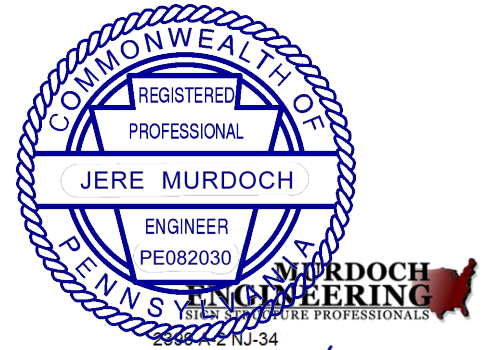


NORTH ELEVATION
SCALE: 1/16" = 1'

DESIGN SPECIFICATIONS	
IBC 2018 with PA amendments	
ASCE 7-16	Minimum Design Loads for Buildings & Other Structures
ACI 318-14	Building Code Requirements for Structural Concrete
ANSI/AISC 360-16	Specification for Structural Steel Buildings
DESIGN LOADS	
Wind	V = 115 mph
Exposure	C
Risk Cat.	II



NORTH ELEVATION
SCALE: 1/16" = 1'



MANASQUAN, NJ 08736
(973) 870-8215 x0
Jere Murdoch 10/26/2023
Jere Murdoch, PE
Professional Engineer
PA PE Lic. #PE082030

QTY: 1
ACCOUNT MANAGER: Phillip Henry

DATE	VERSION	DSR
10.06.2022	1	JB
02.16.2023	2	JB
10.20.2023	3	JB

PAGE: 10
FILEPATH:
\\SBServer\Z\Jobs\Signature Clients\Landmark Properties\The Mark\The Mark at Philadelphia

MATERIALS & COLORS
M1 0.080" ALUMINUM
F FLEX FACE

SIGN CODE: ILLUMINATED SKYLINE SIGN
- MAX MOUNTING HEIGHT: MAY NOT EXCEED THE BUILDING ROOFLINE. - ILLUMINATION: INTERNAL
- MINIMUM MOUNTING HEIGHT: BOTTOM EDGE OF SIGN MUST BE HIGHER THAN 150' ABOVE GRADE
- SIGN FACE SQ. FOOTAGE (ALLOWED): N/A. SUBJECT TO ART COMMISSION APPROVAL.

FOR PERMITS ONLY

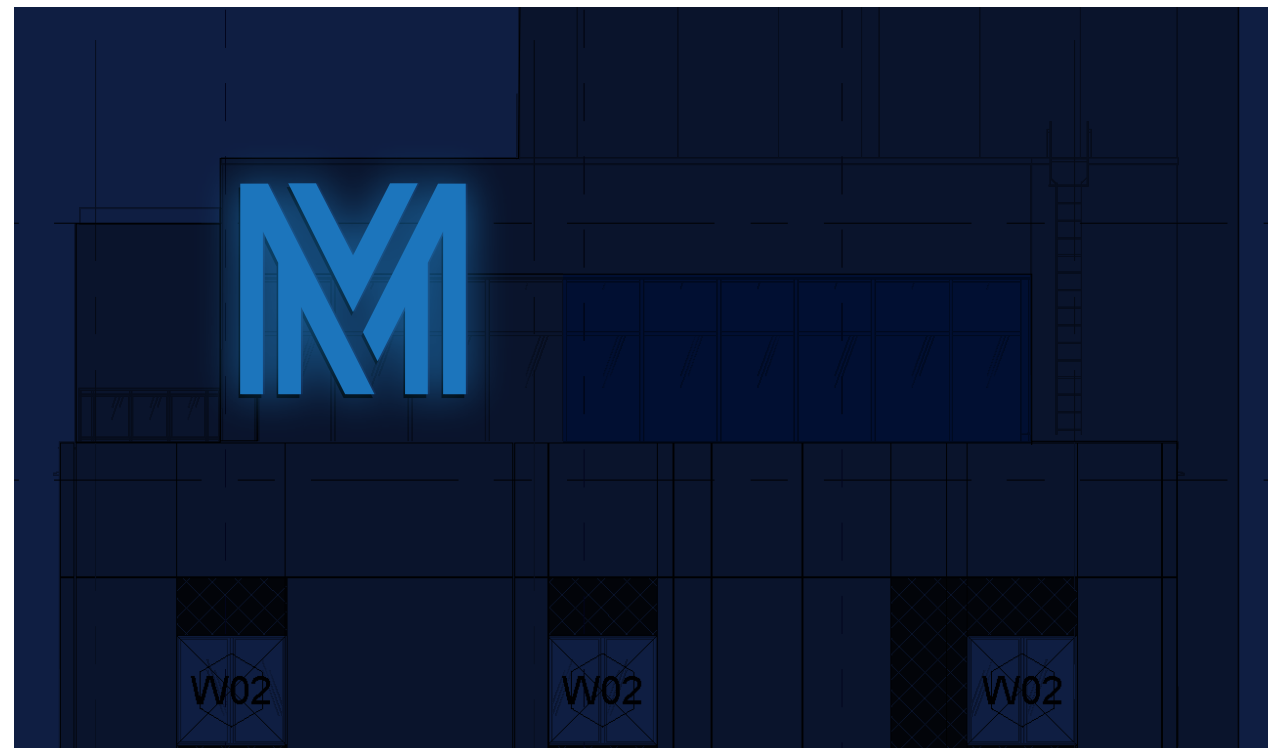
DESIGN POLICY: Please check the proof for accuracy. Upon project & design approval, the customer releases The Sign Brothers, LLC from any errors appearing on the art that may be discovered after production or installation. All custom designs are property of The Sign Brothers, LLC and may not be duplicated without express written permission. The Sign Brothers, LLC hereby assert intellectual property rights for the designs contained herein. Please contact your project manager or design department with any questions.

LP - The Mark at Philadelphia
3615 Chestnut St, Philadelphia, PA 19104

SKY.2
SKYLINE BUILDING ID SIGN
(NORTH ELEVATION)



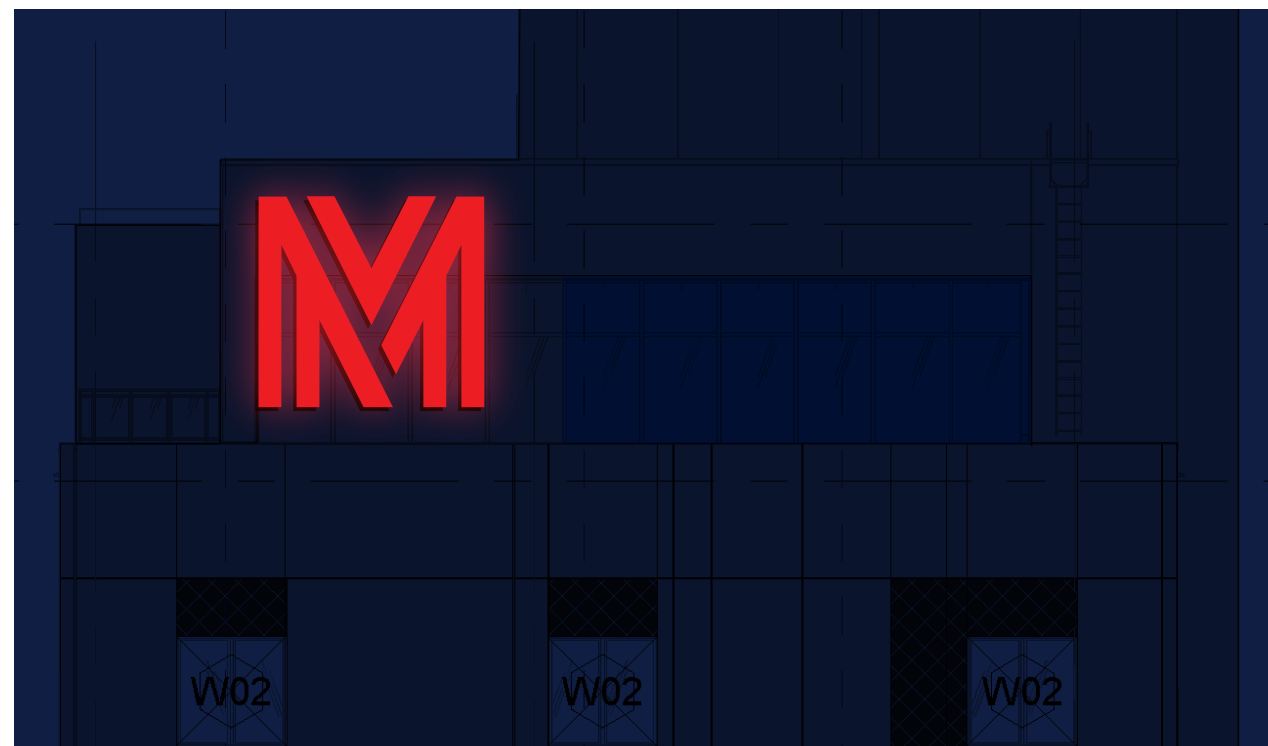
NIGHT VIEW - STANDARD



NIGHT VIEW - BLUE



NIGHT VIEW - GREEN



NIGHT VIEW - RED

MATERIALS & COLORS

- M1** 0.080" ALUMINUM
- F** FLEX FACE

SIGN CODE: ILLUMINATED SKYLINE SIGN

- MAX MOUNTING HEIGHT: MAY NOT EXCEED THE BUILDING ROOFLINE.
- MINIMUM MOUNTING HEIGHT: BOTTOM EDGE OF SIGN MUST BE HIGHER THAN 150' ABOVE GRADE.
- SIGN FACE SQ. FOOTAGE (ALLOWED): N/A. SUBJECT TO ART COMMISSION APPROVAL.
- ILLUMINATION: INTERNAL

FOR PERMITS ONLY

QTY: 1
ACCOUNT MANAGER: Phillip Henry

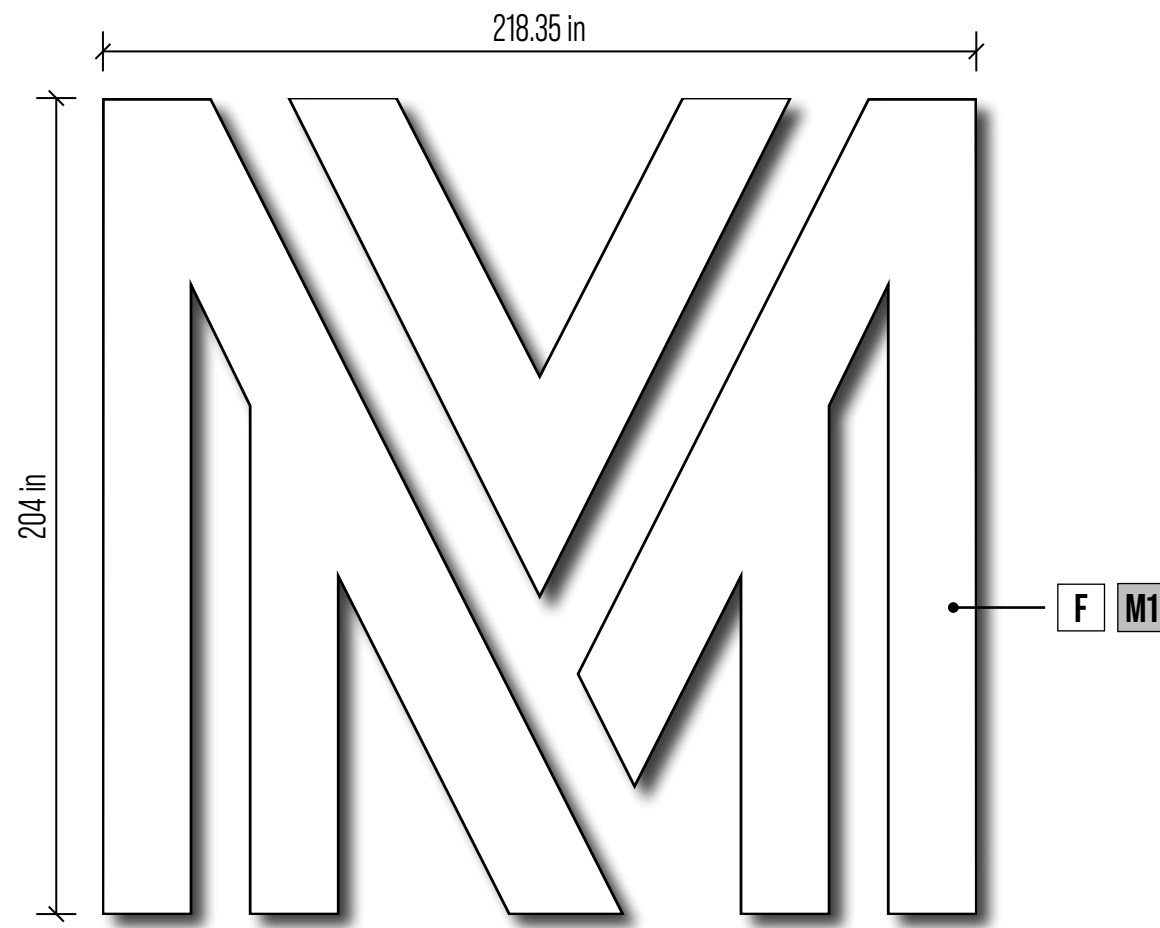
DATE	VERSION	DSR
10.06.2022	1	JB
02.16.2023	2	JB
10.20.2023	3	JB

PAGE: 11

FILEPATH:
\\SBServer\Z\Jobs\Signature Clients\Landmark Properties\The Mark\The Mark at Philadelphia

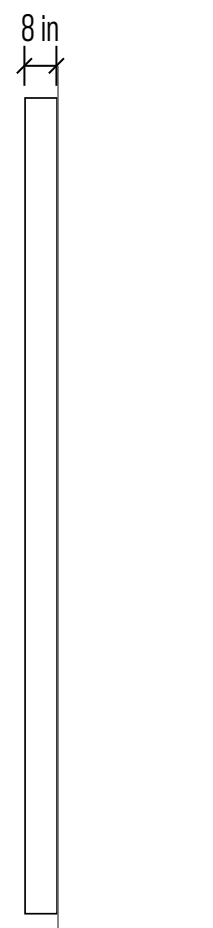
DESIGN POLICY: Please check the proof for accuracy. Upon project & design approval, the customer releases The Sign Brothers, LLC from any errors appearing on the art that may be discovered after production or installation. All custom designs are property of The Sign Brothers, LLC and may not be duplicated without express written permission. The Sign Brothers, LLC hereby assert intellectual property rights for the designs contained herein. Please contact your project manager or design department with any questions.

DESIGN SPECIFICATIONS	
IBC 2018 with PA amendments	
ASCE 7-16	Minimum Design Loads for Buildings & Other Structures
ACI 318-14	Building Code Requirements for Structural Concrete
ANSI/AISC 360-16	Specification for Structural Steel Buildings
DESIGN LOADS	
Wind	V = 115 mph
Exposure	C
Risk Cat.	II



SCALE: 1/4" = 1' PROPOSED SIGN FACE: 309.33 ft²

SCOPE:
1. MANUFACTURE AND INSTALL (1) CABINET SIGN WITH WHITE FLEX FACE AND WHITE RETURNS.



SIDE VIEW

SCALE: 1/4" = 1'

- ELECTRICAL REQUIREMENTS**
- 120V 20A CIRCUIT REQUIRED.
 - UL LABELS REQUIRED AWAY FROM PUBLIC VIEW.
 - ALL ELECTRICAL PRIMARY CIRCUITS MUST BE DEDICATED ISOLATED CIRCUITS PROVIDED BY CLIENT.
 - GC TO PROVIDE ACCESSIBILITY TO REMOTE TRANSFORMER LOCATION FOR INSTALLATION AND SERVICE.
 - ALL ELECTRICAL RUNS AND INTERNAL CONNECTIONS TO BE DONE BY CERTIFIED ELECTRICIAN. SB WILL MAKE FINAL CONNECTION TO SIGN; POWER MUST BE SHUT OFF FOR FINAL CONNECTION.

SEE SIGN FRAME & MOUNTING DETAIL ON PG. 18

LP - The Mark at Philadelphia
3615 Chestnut St, Philadelphia, PA 19104

SKY.3
SKYLINE BUILDING ID SIGN
[WEST ELEVATION]

QTY: 1
ACCOUNT MANAGER: Phillip Henry

DATE	VERSION	DSR
10.06.2022	1	JB
02.16.2023	2	JB
10.20.2023	3	JB

Jere Murdoch, PE
Professional Engineer
PA PE Lic. #PE082030
10/26/2023

2399 A-2 NJ-34
MANASQUAN, NJ 08736
(973) 470-8215

MATERIALS & COLORS

M1	0.080" ALUMINUM
F	FLEX FACE

SIGN CODE: ILLUMINATED SKYLINE SIGN

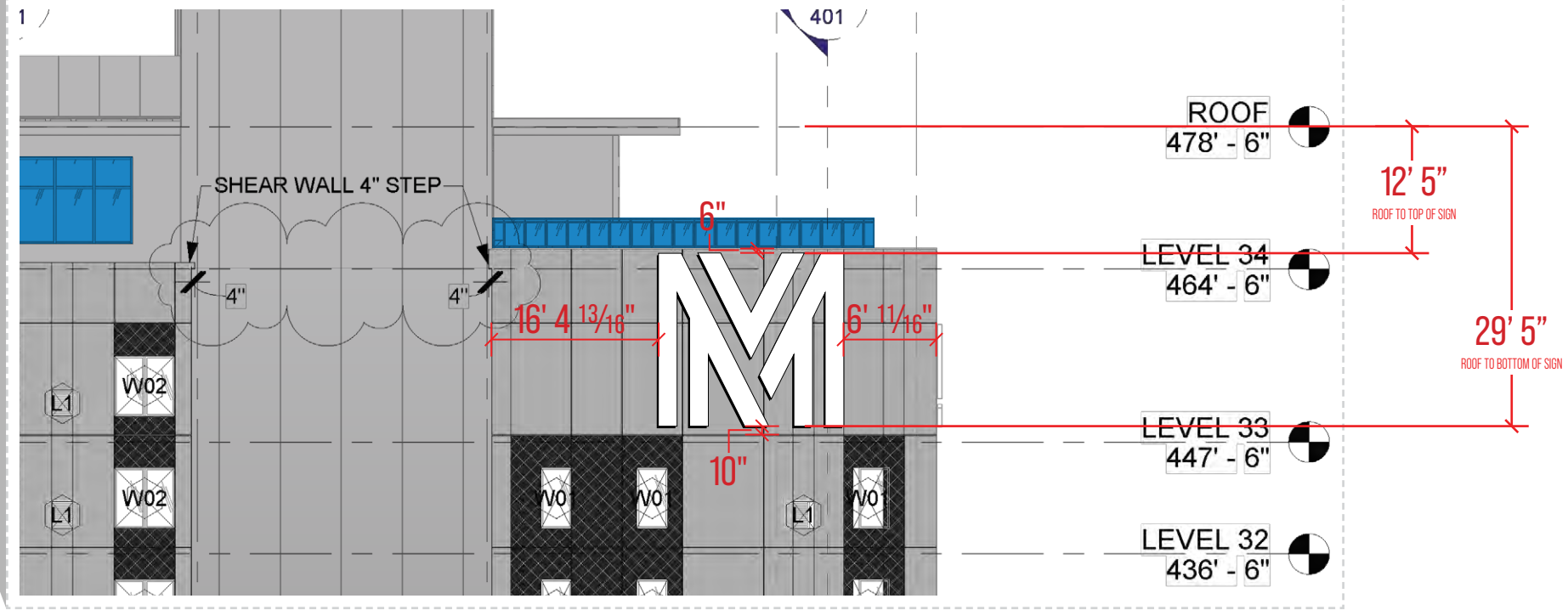
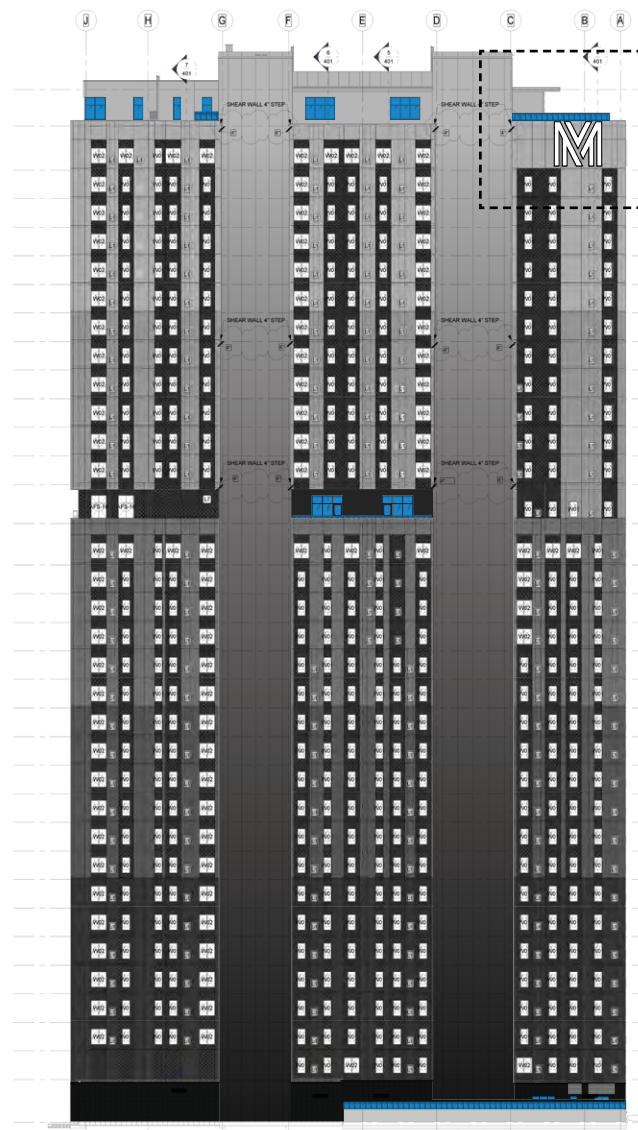
- MAX MOUNTING HEIGHT: MAY NOT EXCEED THE BUILDING ROOFLINE. - ILLUMINATION: INTERNAL
- MINIMUM MOUNTING HEIGHT: BOTTOM EDGE OF SIGN MUST BE HIGHER THAN 150' ABOVE GRADE
- SIGN FACE SQ. FOOTAGE (ALLOWED): N/A. SUBJECT TO ART COMMISSION APPROVAL.

FOR PERMITS ONLY

PAGE: 12
FILEPATH:
\\SBServer\Z\Jobs\Signature Clients\Landmark Properties\The Mark\The Mark at Philadelphia

DESIGN POLICY: Please check the proof for accuracy. Upon project & design approval, the customer releases The Sign Brothers, LLC from any errors appearing on the art that may be discovered after production or installation. All custom designs are property of The Sign Brothers, LLC and may not be duplicated without express written permission. The Sign Brothers, LLC hereby assert intellectual property rights for the designs contained herein. Please contact your project manager or design department with any questions.

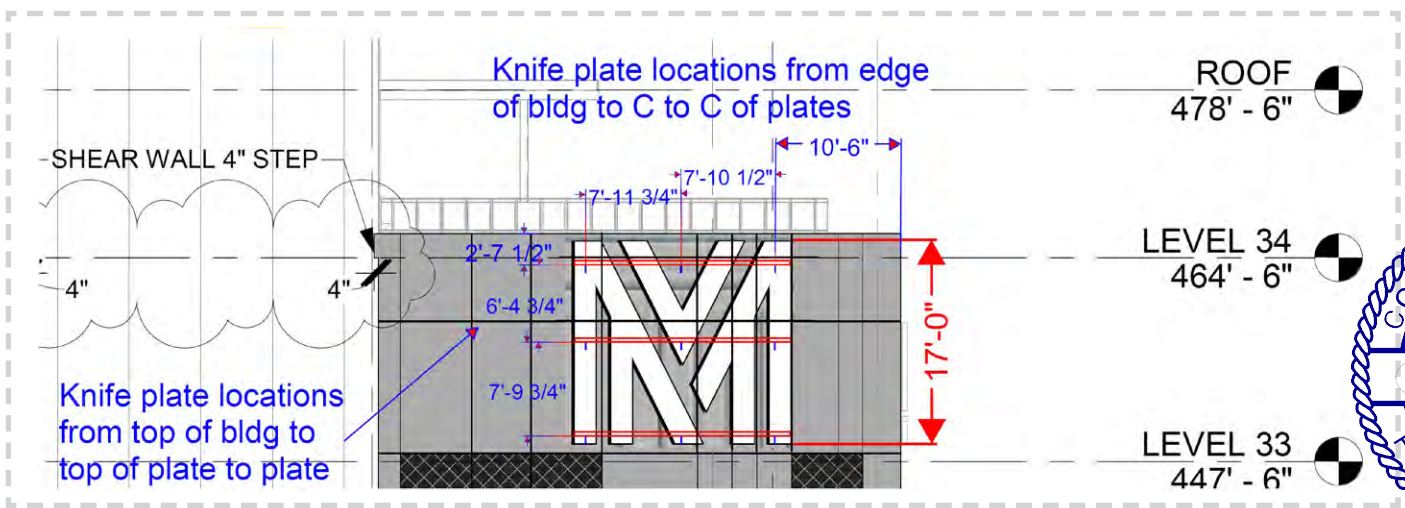
SKY.3
SKYLINE BUILDING ID SIGN
[WEST ELEVATION]



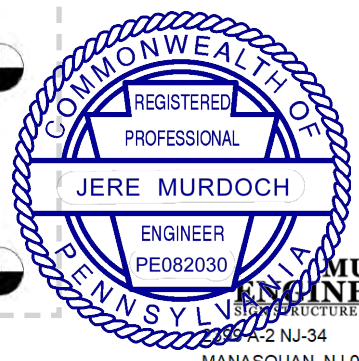
WEST ELEVATION
SCALE: 1/16" = 1'

WEST ELEVATION
SCALE: NTS

DESIGN SPECIFICATIONS	
IBC 2018 with PA amendments	
ASCE 7-16	Minimum Design Loads for Buildings & Other Structures
ACI 318-14	Building Code Requirements for Structural Concrete
ANSI/AISC 360-16	Specification for Structural Steel Buildings
DESIGN LOADS	
Wind	V = 115 mph
Exposure	C
Risk Cat.	II



WEST ELEVATION
SCALE: 1/16" = 1'



MURDOCH ENGINEERING
SIGN STRUCTURE PROFESSIONALS
2009-A-2 NJ-34
MANASQUAN, NJ 08736
(973) 870-8215 x0
Jere Murdoch 10/26/2023
Jere Murdoch, PE
Professional Engineer
PA PE Lic. #PE082030

MATERIALS & COLORS

M1	0.080" ALUMINUM
F	FLEX FACE

SIGN CODE: ILLUMINATED SKYLINE SIGN

- MAX MOUNTING HEIGHT: MAY NOT EXCEED THE BUILDING ROOFLINE.	- ILLUMINATION: INTERNAL
- MINIMUM MOUNTING HEIGHT: BOTTOM EDGE OF SIGN MUST BE HIGHER THAN 150' ABOVE GRADE.	
- SIGN FACE SQ. FOOTAGE (ALLOWED): N/A. SUBJECT TO ART COMMISSION APPROVAL.	

FOR PERMITS ONLY

QTY: 1
ACCOUNT MANAGER: Phillip Henry

DATE	VERSION	DSR
10.06.2022	1	JB
02.16.2023	2	JB
10.20.2023	3	JB

PAGE: 13
FILEPATH:
\\SBServer\Z\Jobs\Signature Clients\Landmark Properties\The Mark\The Mark at Philadelphia

DESIGN POLICY: Please check the proof for accuracy. Upon project & design approval, the customer releases The Sign Brothers, LLC from any errors appearing on the art that may be discovered after production or installation. All custom designs are property of The Sign Brothers, LLC and may not be duplicated without express written permission. The Sign Brothers, LLC hereby assert intellectual property rights for the designs contained herein. Please contact your project manager or design department with any questions.

LP - The Mark at Philadelphia
3615 Chestnut St, Philadelphia, PA 19104

SKY.3
SKYLINE BUILDING ID SIGN
[WEST ELEVATION]



NIGHT VIEW - STANDARD



NIGHT VIEW - BLUE



NIGHT VIEW - GREEN



NIGHT VIEW - RED

MATERIALS & COLORS

- M1** 0.080" ALUMINUM
- F** FLEX FACE

SIGN CODE: ILLUMINATED SKYLINE SIGN

- MAX MOUNTING HEIGHT: MAY NOT EXCEED THE BUILDING ROOFLINE.
- MINIMUM MOUNTING HEIGHT: BOTTOM EDGE OF SIGN MUST BE HIGHER THAN 150' ABOVE GRADE.
- SIGN FACE SQ. FOOTAGE (ALLOWED): N/A. SUBJECT TO ART COMMISSION APPROVAL.
- ILLUMINATION: INTERNAL

FOR PERMITS ONLY

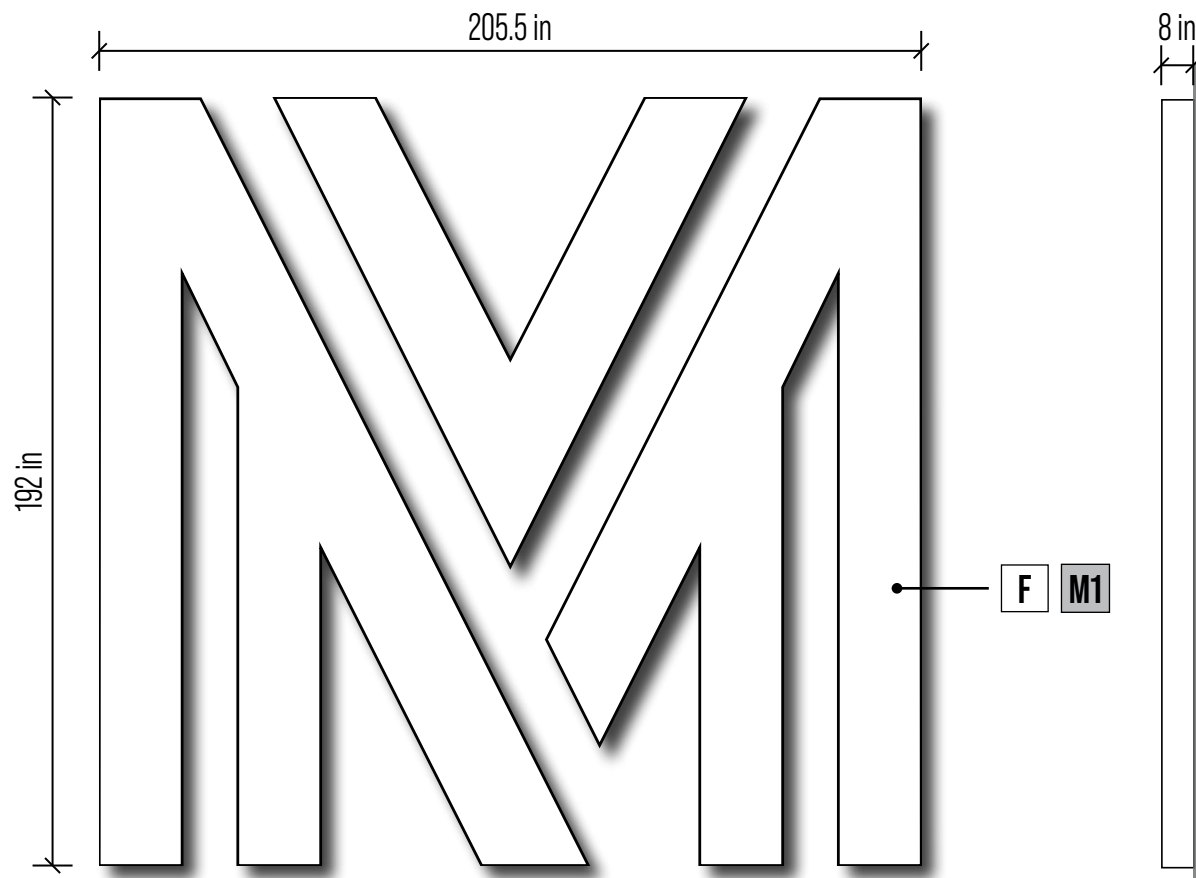
QTY: 1
ACCOUNT MANAGER: Phillip Henry

DATE	VERSION	DSR
10.06.2022	1	JB
02.16.2023	2	JB
10.20.2023	3	JB

PAGE: 14
FILEPATH:
\\SBServer\Z\Jobs\Signature Clients\Landmark Properties\The Mark\The Mark at Philadelphia

DESIGN POLICY: Please check the proof for accuracy. Upon project & design approval, the customer releases The Sign Brothers, LLC from any errors appearing on the art that may be discovered after production or installation. All custom designs are property of The Sign Brothers, LLC and may not be duplicated without express written permission. The Sign Brothers, LLC hereby assert intellectual property rights for the designs contained herein. Please contact your project manager or design department with any questions.

DESIGN SPECIFICATIONS	
IBC 2018 with PA amendments	
ASCE 7-16	Minimum Design Loads for Buildings & Other Structures
ACI 318-14	Building Code Requirements for Structural Concrete
ANSI/AISC 360-16	Specification for Structural Steel Buildings
DESIGN LOADS	
Wind	V = 115 mph
Exposure	C
Risk Cat.	II



- ELECTRICAL REQUIREMENTS**
- 120V 20A CIRCUIT REQUIRED.
 - UL LABELS REQUIRED AWAY FROM PUBLIC VIEW.
 - ALL ELECTRICAL PRIMARY CIRCUITS MUST BE DEDICATED ISOLATED CIRCUITS PROVIDED BY CLIENT.
 - GC TO PROVIDE ACCESSIBILITY TO REMOTE TRANSFORMER LOCATION FOR INSTALLATION AND SERVICE.
 - ALL ELECTRICAL RUNS AND INTERNAL CONNECTIONS TO BE DONE BY CERTIFIED ELECTRICIAN. SB WILL MAKE FINAL CONNECTION TO SIGN; POWER MUST BE SHUT OFF FOR FINAL CONNECTION.

SCALE: 1/4" = 1' | PROPOSED SIGN FACE: 274 ft²

SCOPE:
1. MANUFACTURE AND INSTALL (1) CABINET SIGN WITH WHITE FLEX FACE AND WHITE RETURNS.

SIDE VIEW
SCALE: 1/4" = 1'

SEE SIGN FRAME & MOUNTING DETAIL ON PG. 18

LP - The Mark at Philadelphia
3615 Chestnut St, Philadelphia, PA 19104

SKY.4
SKYLINE BUILDING ID SIGN
[SOUTH ELEVATION]

QTY: 1
ACCOUNT MANAGER: Phillip Henry

DATE	VERSION	DSR
10.06.2022	1	JB
02.16.2023	2	JB
10.20.2023	3	JB



2399 A-2 NJ-34
MANASQUAN, NJ 08736
(973) 870-8215 x0
Jere Murdoch 10/26/2023
Jere Murdoch, PE
Professional Engineer
PA PE Lic. #PE082030

MATERIALS & COLORS

M1	0.080" ALUMINUM
F	FLEX FACE

SIGN CODE: ILLUMINATED SKYLINE SIGN

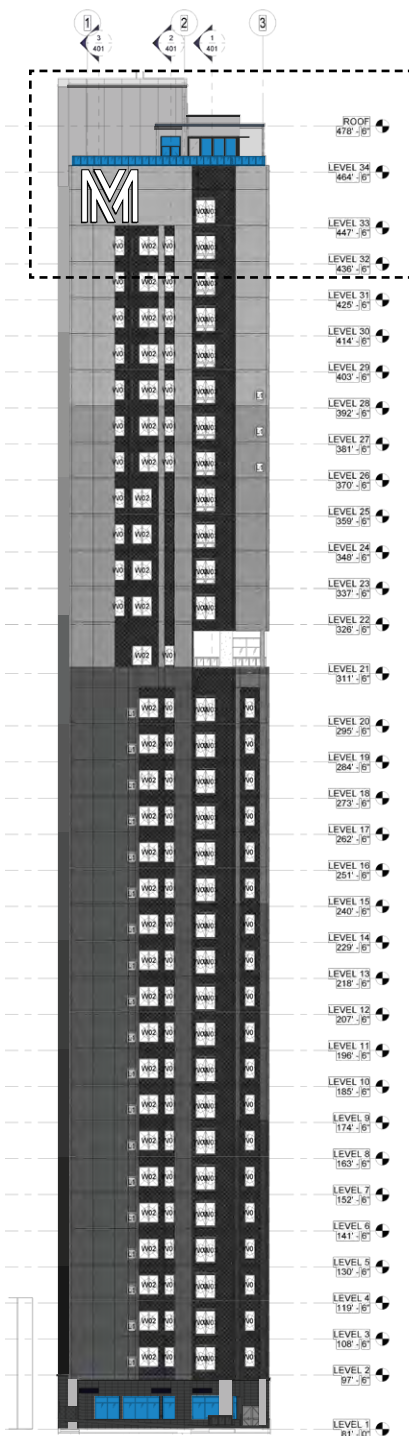
- MAX MOUNTING HEIGHT: MAY NOT EXCEED THE BUILDING ROOFLINE. - ILLUMINATION: INTERNAL
- MINIMUM MOUNTING HEIGHT: BOTTOM EDGE OF SIGN MUST BE HIGHER THAN 150' ABOVE GRADE
- SIGN FACE SQ. FOOTAGE (ALLOWED): N/A. SUBJECT TO ART COMMISSION APPROVAL.

PAGE: 15
FILEPATH:
\\SBServer\Z\Jobs\Signature Clients\Landmark Properties\The Mark\The Mark at Philadelphia

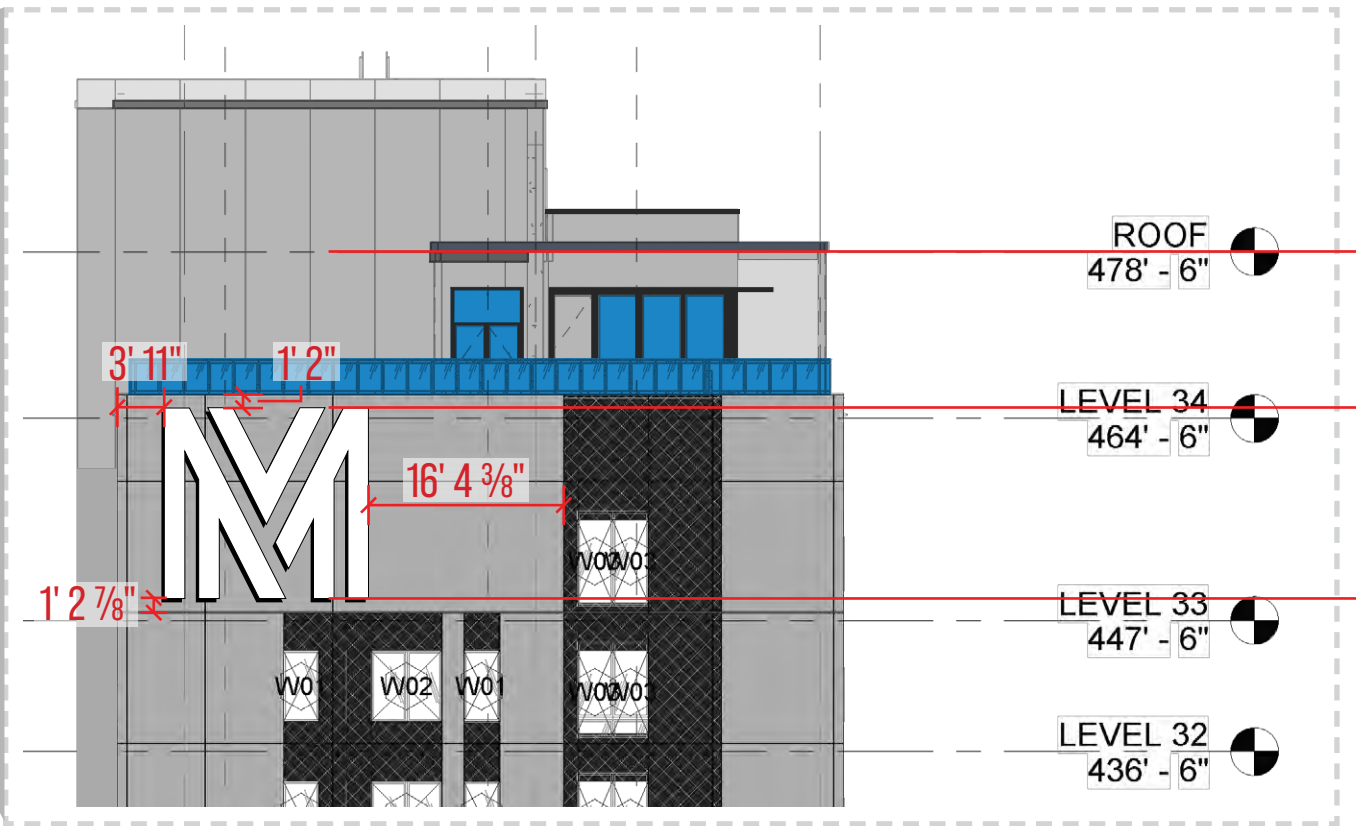
DESIGN POLICY: Please check the proof for accuracy. Upon project & design approval, the customer releases The Sign Brothers, LLC from any errors appearing on the art that may be discovered after production or installation. All custom designs are property of The Sign Brothers, LLC and may not be duplicated without express written permission. The Sign Brothers, LLC hereby assert intellectual property rights for the designs contained herein. Please contact your project manager or design department with any questions.

LP - The Mark at Philadelphia
3615 Chestnut St, Philadelphia, PA 19104

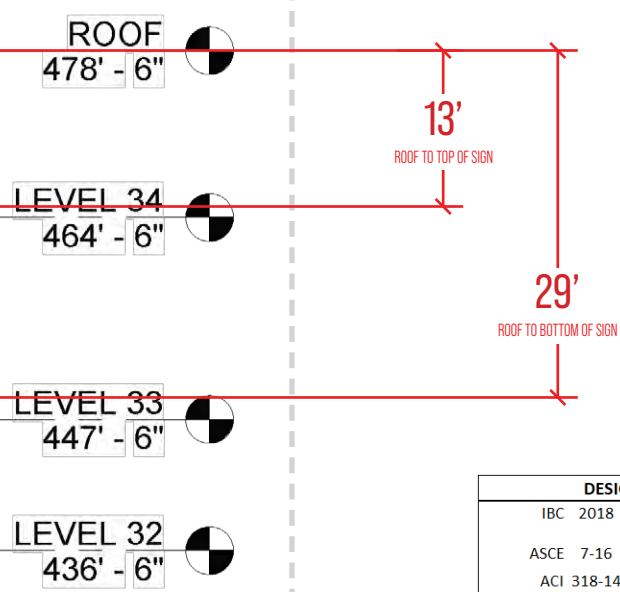
SKY.4
SKYLINE BUILDING ID SIGN
[SOUTH ELEVATION]



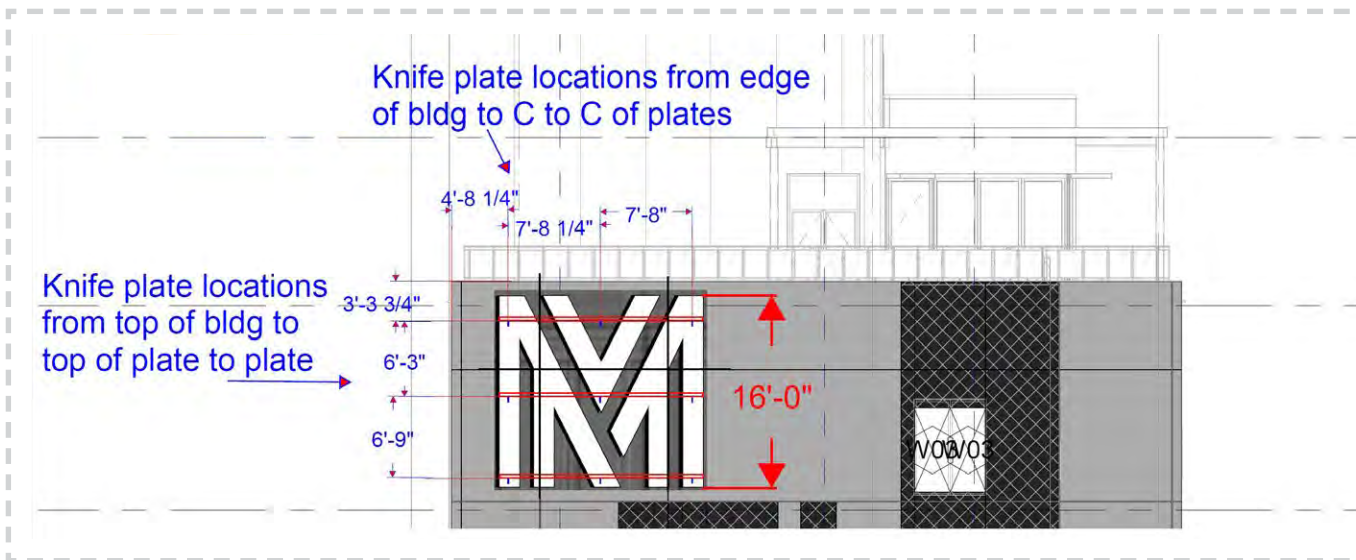
SOUTH ELEVATION
SCALE: NTS



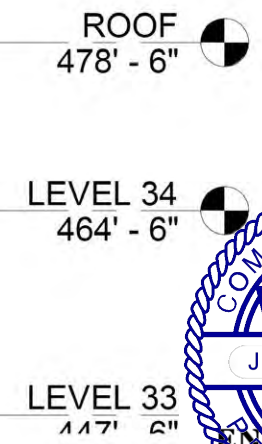
SOUTH ELEVATION
SCALE: 1/16" = 1'



DESIGN SPECIFICATIONS	
IBC 2018	with PA amendments
ASCE 7-16	Minimum Design Loads for Buildings & Other Structures
ACI 318-14	Building Code Requirements for Structural Concrete
ANSI/AISC 360-16	Specification for Structural Steel Buildings
DESIGN LOADS	
Wind	V = 115 mph
Exposure	C
Risk Cat.	II



SOUTH ELEVATION
SCALE: 1/16" = 1'



2399 ARLINGDALE AVE
MANASQUAN, NJ 08701
(973) 870-8215 x0
Jere Murdoch 10/26/2023
Jere Murdoch, PE
Professional Engineer
PA PE Lic. #PE082030

QTY: 1
ACCOUNT MANAGER: Phillip Henry

DATE	VERSION	DSR
10.06.2022	1	JB
02.16.2023	2	JB
10.20.2023	3	JB

PAGE: 16
FILEPATH:
\\SBServer\Z\Jobs\Signature Clients\Landmark Properties\The Mark\The Mark at Philadelphia

MATERIALS & COLORS

M1	0.080" ALUMINUM
F	FLEX FACE

SIGN CODE: ILLUMINATED SKYLINE SIGN

- MAX MOUNTING HEIGHT: MAY NOT EXCEED THE BUILDING ROOFLINE.
- MINIMUM MOUNTING HEIGHT: BOTTOM EDGE OF SIGN MUST BE HIGHER THAN 150' ABOVE GRADE.
- SIGN FACE SQ. FOOTAGE (ALLOWED): N/A. SUBJECT TO ART COMMISSION APPROVAL.
- ILLUMINATION: INTERNAL

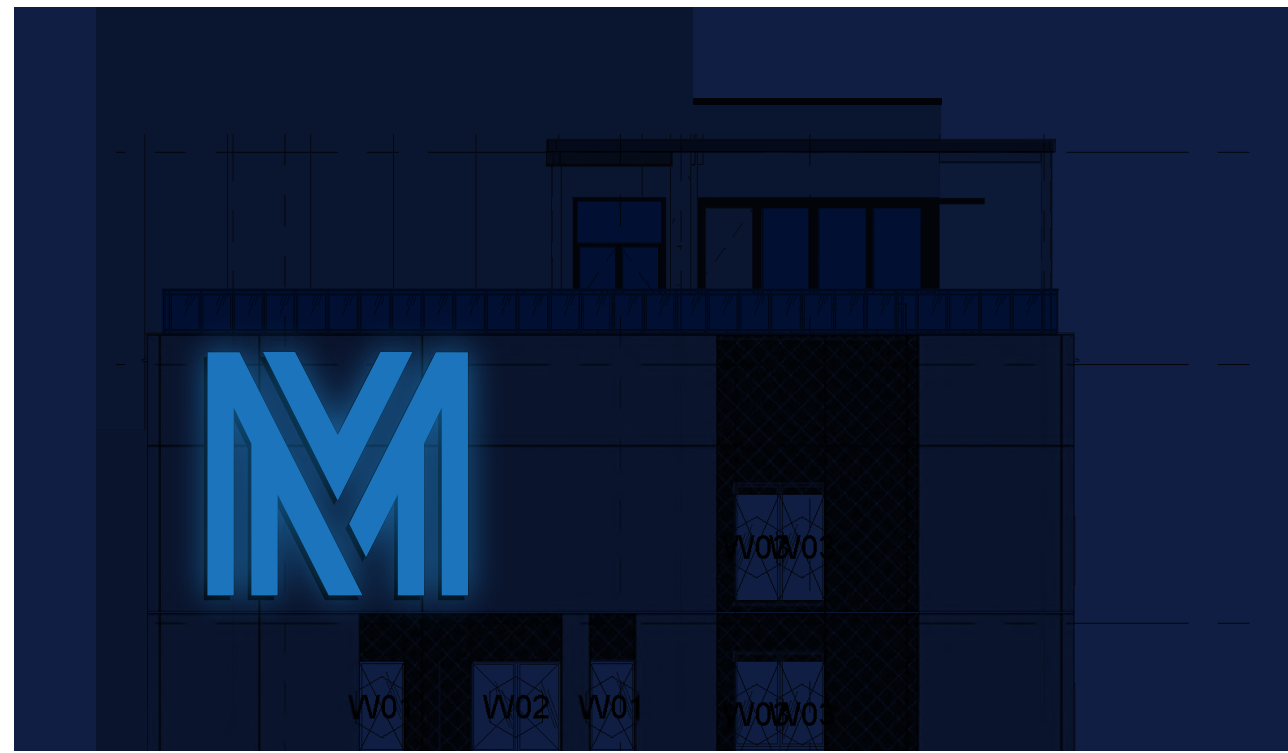
DESIGN POLICY: Please check the proof for accuracy. Upon project & design approval, the customer releases The Sign Brothers, LLC from any errors appearing on the art that may be discovered after production or installation. All custom designs are property of The Sign Brothers, LLC and may not be duplicated without express written permission. The Sign Brothers, LLC hereby assert intellectual property rights for the designs contained herein. Please contact your project manager or design department with any questions.

LP - The Mark at Philadelphia
3615 Chestnut St, Philadelphia, PA 19104

SKY.4
SKYLINE BUILDING ID SIGN
[SOUTH ELEVATION]



NIGHT VIEW - STANDARD



NIGHT VIEW - BLUE



NIGHT VIEW - GREEN



NIGHT VIEW - RED

MATERIALS & COLORS

- M1** 0.080" ALUMINUM
- F** FLEX FACE

SIGN CODE: ILLUMINATED SKYLINE SIGN

- MAX MOUNTING HEIGHT: MAY NOT EXCEED THE BUILDING ROOFLINE. - ILLUMINATION: INTERNAL
- MINIMUM MOUNTING HEIGHT: BOTTOM EDGE OF SIGN MUST BE HIGHER THAN 150' ABOVE GRADE
- SIGN FACE SQ. FOOTAGE (ALLOWED): N/A. SUBJECT TO ART COMMISSION APPROVAL.

FOR PERMITS ONLY

QTY: 1

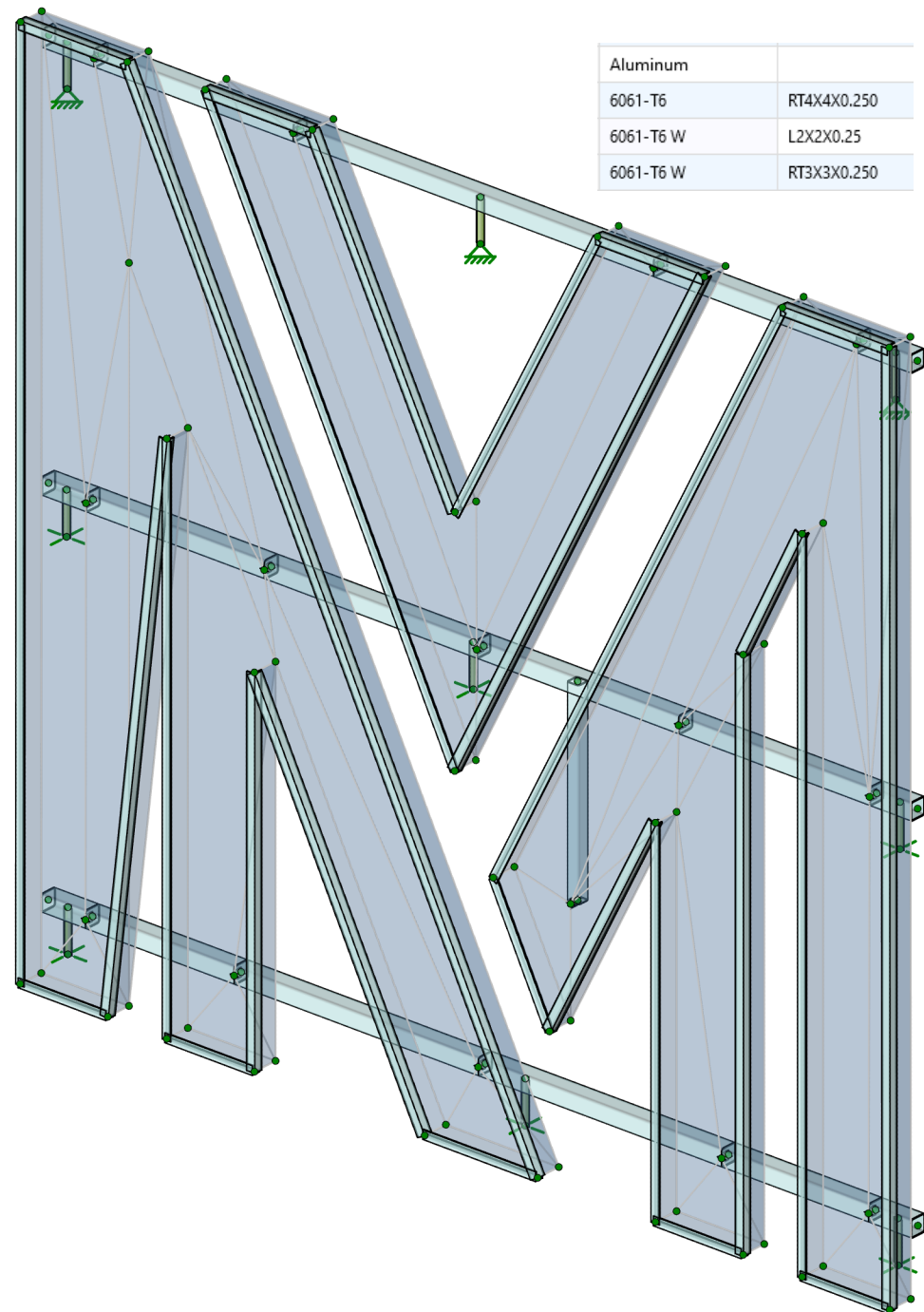
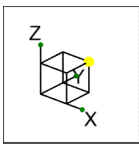
ACCOUNT MANAGER: Phillip Henry

DATE	VERSION	DSR
10.06.2022	1	JB
02.16.2023	2	JB
10.20.2023	3	JB

PAGE: 17

FILEPATH:
\\SBServer\Z\Jobs\Signature Clients\Landmark Properties\The Mark\The Mark at Philadelphia

DESIGN POLICY: Please check the proof for accuracy. Upon project & design approval, the customer releases The Sign Brothers, LLC from any errors appearing on the art that may be discovered after production or installation. All custom designs are property of The Sign Brothers, LLC and may not be duplicated without express written permission. The Sign Brothers, LLC hereby assert intellectual property rights for the designs contained herein. Please contact your project manager or design department with any questions.



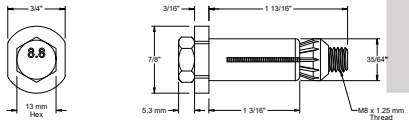
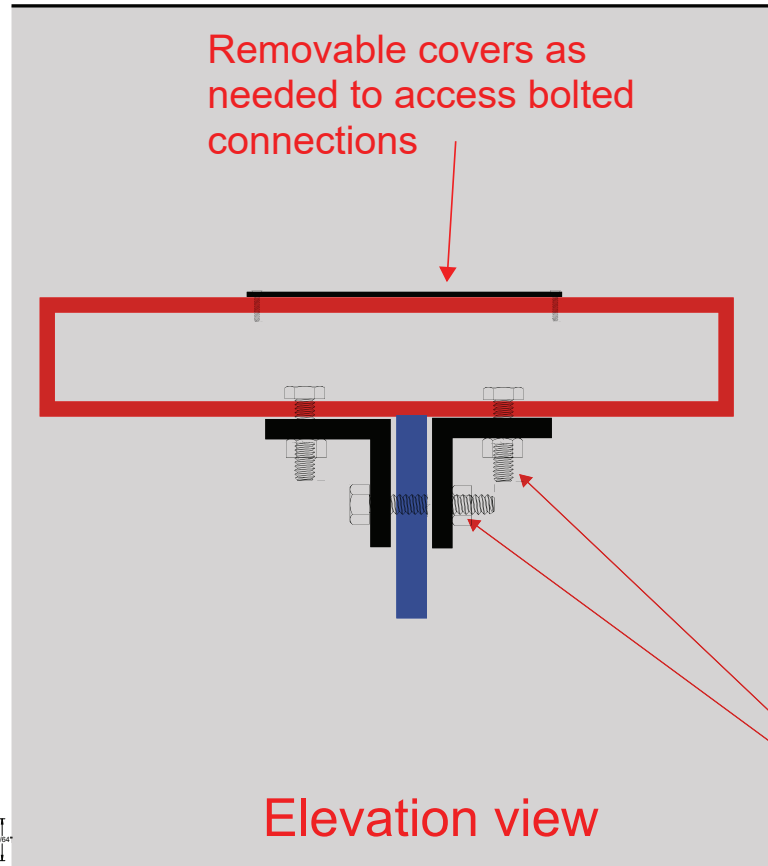
Aluminum	
6061-T6	RT4X4X0.250
6061-T6 W	L2X2X0.25
6061-T6 W	RT3X3X0.250

DESIGN SPECIFICATIONS	
IBC 2018 with PA amendments	
ASCE 7-16	Minimum Design Loads for Buildings & Other Structures
ACI 318-14	Building Code Requirements for Structural Concrete
ANSI/AISC 360-16	Specification for Structural Steel Buildings
DESIGN LOADS	
Wind	V = 115 mph
Exposure	C
Risk Cat.	II

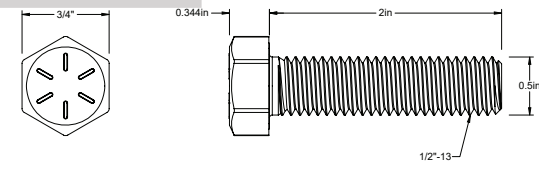


LP - The Mark at Philadelphia
3615 Chestnut St, Philadelphia, PA 19104

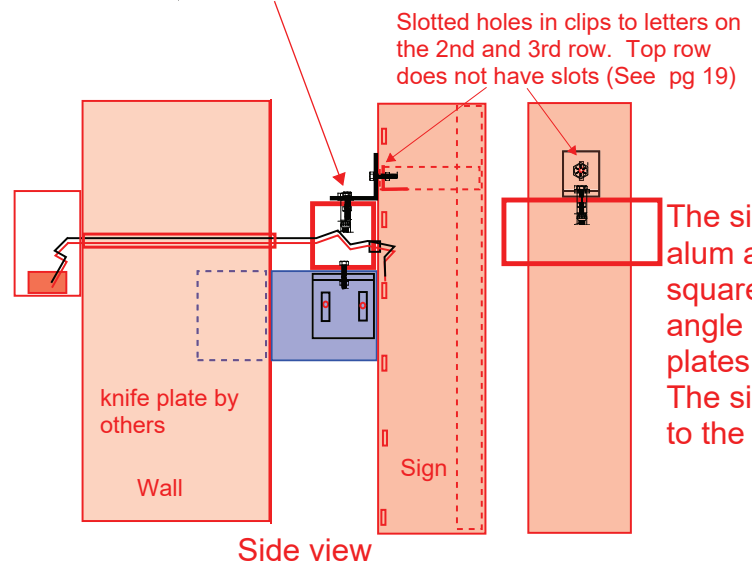
SKY.4
SKYLINE BUILDING ID SIGN
[SOUTH ELEVATION]



McMASTER-CARR PART NUMBER **90187A111**
Tight-Spot Hex Head Screw



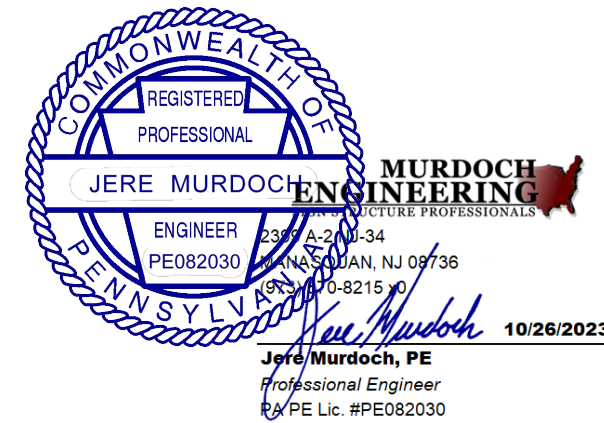
McMASTER-CARR PART NUMBER **91268A260**
High-Strength Grade 8 Steel Hex Head Screw



The sign is fabricated .125 aluminum with 2" x 2" x 3/16" alum angle perimeter frame. 4" x 4" x 1/4" aluminum square tube horizontal supports will attach to 4" aluminum angle clips that are thru-bolted to the 5/16" thick knife plates provided by others. The sign cabinets will have 4" angle clips on back to bolt to the top of the 4" tube supports.

Aluminum Welding Notes:

- 1.) Welding shall be in accordance with AWS D1.2
- 2.) Aluminum alloy filler 4043 shall be used in all structural welds
- 3.) Fillet weld size shall not exceed thinnest member wall thickness of joined sections.
- 4.) Welding process GMAW or GTAW shall be in accordance with AWS D1.2
- 5.) Aluminum Tubing shall be 6061-T6 minimum.
- 6.) Provide Neoprene gaskets between dissimilar metals

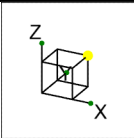


QTY: 1
ACCOUNT MANAGER: Phillip Henry

DATE	VERSION	DSR
10.06.2022	1	JB
02.16.2023	2	JB
10.20.2023	3	JB

PAGE: 18
FILEPATH:
\\SBServer\Z\Jobs\Signature Clients\Landmark Properties\The Mark\The Mark at Philadelphia

DESIGN POLICY: Please check the proof for accuracy. Upon project & design approval, the customer releases The Sign Bros., LLC from any errors appearing on the art that may be discovered after production or installation. All custom designs are property of The Sign Bros., LLC and may not be duplicated without express written permission. The Sign Bros., LLC hereby assert intellectual property rights for the designs contained herein. Please contact your project manager or design department with any questions.



DESIGN SPECIFICATIONS	
IBC 2018 with PA amendments	
ASCE 7-16 Minimum Design Loads for Buildings & Other Structures	
ACI 318-14 Building Code Requirements for Structural Concrete	
ANSI/AISC 360-16 Specification for Structural Steel Buildings	
DESIGN LOADS	
Wind Exposure	V = 115 mph C
Risk Cat.	II

Node Reactions (By Combination)								
LC	Node Label	X [k]	Y [k]	Z [k]	MX [k-ft]	MY [k-ft]	MZ [k-ft]	
23	3	N100	0.026	0.01	0	0	0	0
24	3	N82	-0.096	-0.049	0	0	0	0
25	3	N88	0.006	-0.027	0	0	0	0
26	3	N90	0.042	-0.003	0	0	0	0
27	3	N108	-0.015	0.004	0	0	0	0
28	3	N62	-0.006	0.001	0	0	0	0
29	3	N66	0.63	-0.002	0.846	0	0	0
30	3	N80	-0.591	0.018	0.797	0	0	0
31	3	N143	0.005	0.048	0.157	0	0	0
32	3	Totals:	0	0	1.8			

Node Reactions (By Combination)								
LC	Node Label	X [k]	Y [k]	Z [k]	MX [k-ft]	MY [k-ft]	MZ [k-ft]	
34	4	N100	0.187	-0.956	0	0	0	0
35	4	N82	0.008	-1.262	0	0	0	0
36	4	N88	-0.031	-0.334	0	0	0	0
37	4	N90	0.086	-0.591	0	0	0	0
38	4	N108	-0.083	-0.554	0	0	0	0
39	4	N62	-0.112	-0.592	0	0	0	0
40	4	N66	0.123	-0.922	0.076	0	0	0
41	4	N80	0.01	-0.698	-0.137	0	0	0
42	4	N143	-0.189	-1.14	0.06	0	0	0
43	4	Totals:	0	-7.049	0			

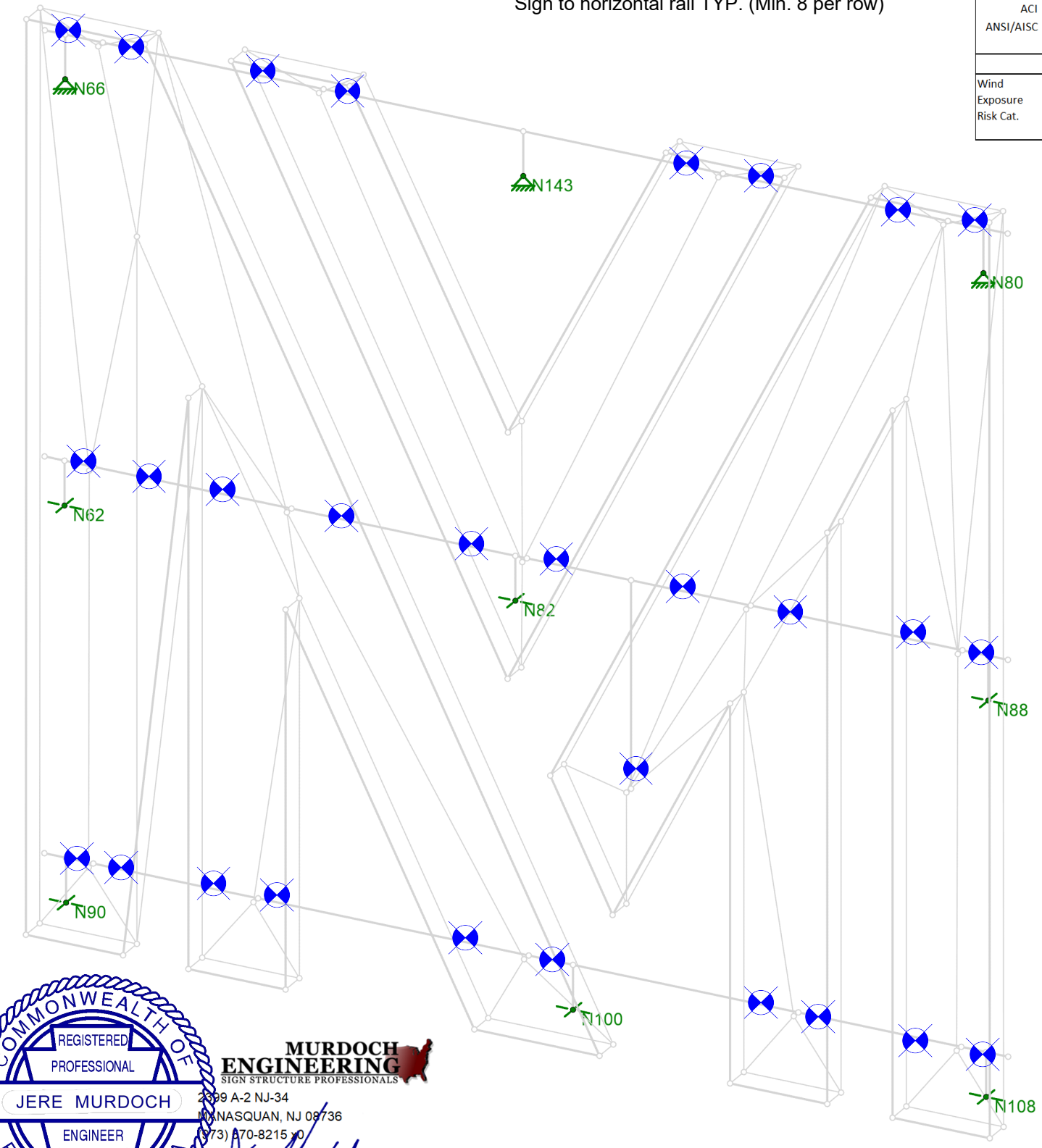
Node Reactions (By Combination)								
LC	Node Label	X [k]	Y [k]	Z [k]	MX [k-ft]	MY [k-ft]	MZ [k-ft]	
45	5	N100	-0.301	1.555	0	0	0	0
46	5	N82	-0.001	2.081	0	0	0	0
47	5	N88	0.05	0.543	0	0	0	0
48	5	N90	-0.143	0.96	0	0	0	0
49	5	N108	0.133	0.903	0	0	0	0
50	5	N62	0.182	0.948	0	0	0	0
51	5	N66	-0.198	1.487	-0.122	0	0	0
52	5	N80	-0.02	1.13	0.213	0	0	0
53	5	N143	0.297	1.861	-0.092	0	0	0
54	5	Totals:	0	11.467	0			

= Approx. Location of Angle Clip Connection of Sign to horizontal rail TYP. (Min. 8 per row)

DEAD

WIND FRONT

WIND REAR (SUCTION)



MURDOCH ENGINEERING
SIGN STRUCTURE PROFESSIONALS
2399 A-2 NJ-34
MANASQUAN, NJ 08736
(973) 870-8215

Jere Murdoch 10/26/2023
Jere Murdoch, PE
Professional Engineer
PA PE Lic. #PE082030

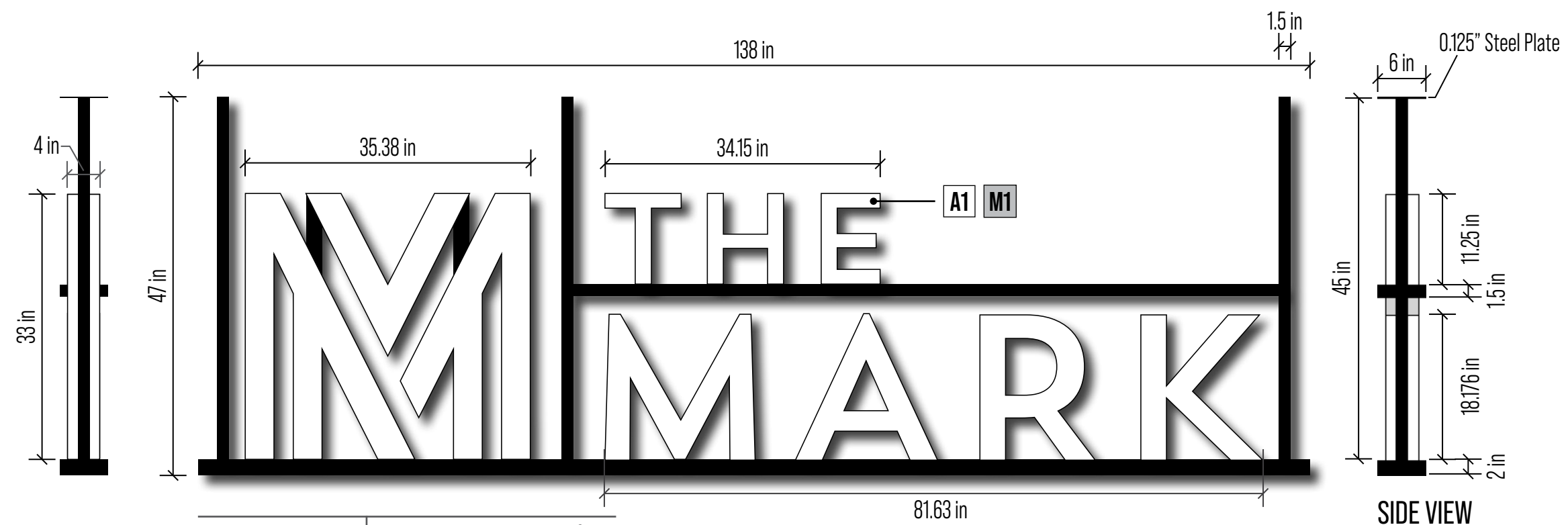


Murdoch Engineering LLC
Nick Nehila, PE

UNFACTORED DESIGN REACTIONS
N.T.S.

LP - The Mark at Philadelphia
3615 Chestnut St, Philadelphia, PA 19104

CAN.5
CANOPY SIGN
(EAST ELEVATION)



MOUNTING METHOD:
MOUNTING HARDWARE AND BLOCKING REQUIREMENTS TO BE SPECIFIED BY SIGN ENGINEER.

- ELECTRICAL REQUIREMENTS**
- 120V 20A CIRCUIT REQUIRED.
 - UL LABELS REQUIRED AWAY FROM PUBLIC VIEW.
 - ALL ELECTRICAL PRIMARY CIRCUITS MUST BE DEDICATED ISOLATED CIRCUITS PROVIDED BY CLIENT.
 - GC TO PROVIDE ACCESSIBILITY TO REMOTE TRANSFORMER LOCATION FOR INSTALLATION AND SERVICE.
 - ALL ELECTRICAL RUNS AND INTERNAL CONNECTIONS TO BE DONE BY CERTIFIED ELECTRICIAN. SB WILL MAKE FINAL CONNECTION TO SIGN; POWER MUST BE SHUT OFF FOR FINAL CONNECTION.

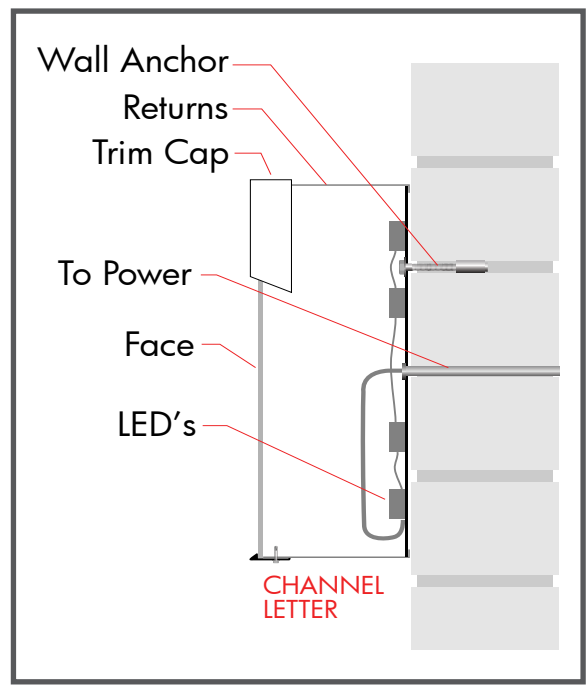
SCALE: 3/4" = 1' | PROPOSED SIGN FACE: 45.04 ft²

SCOPE:
1. MANUFACTURE AND INSTALL (1) CEILING-MOUNTED FRAME WITH CHANNEL LETTERS WITH WHITE ACRYLIC FACES AND RETURNS.

SIGN TYPE NOT ENGINEERED



NIGHT VIEW



METHOD OF ATTACHMENT

QTY: 1
ACCOUNT MANAGER: Phillip Henry

DATE	VERSION	DSR
10.06.2022	1	JB
02.16.2023	2	JB
10.20.2023	3	JB

PAGE: 20
FILEPATH:
\\SBServer\Z\Jobs\Signature Clients\Landmark Properties\The Mark\The Mark at Philadelphia

MATERIALS & COLORS

M1	0.080" ALUMINUM
A1	3/16" ACRYLIC

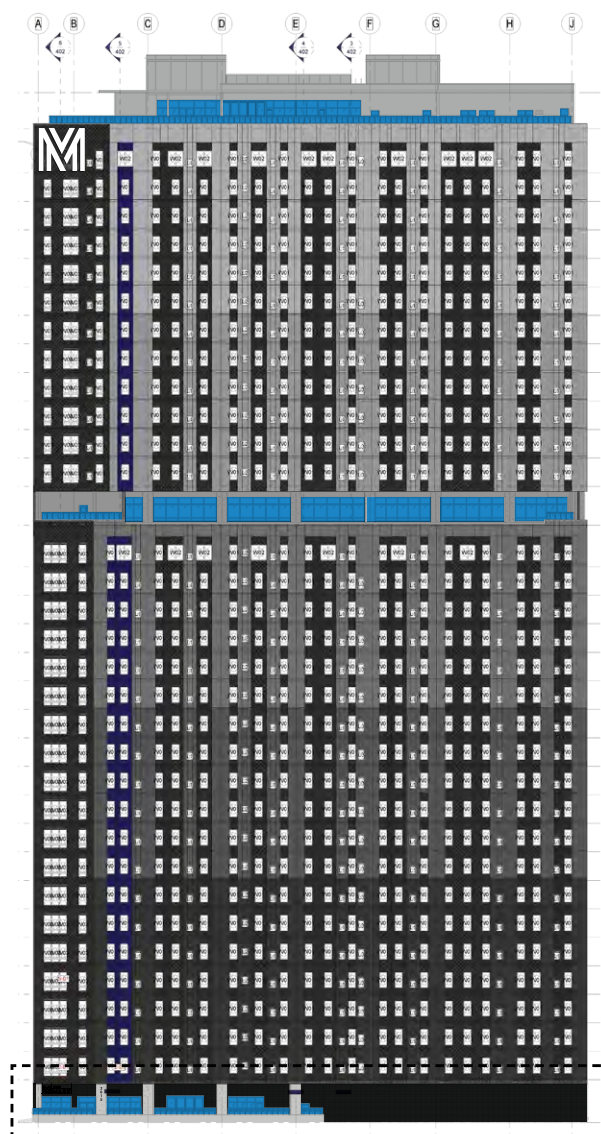
SIGN CODE: ILLUMINATED CANOPY SIGN

- MAX MOUNTING HEIGHT: THE LOWER OF THE ROOF LINE OR SECOND FLOOR WINDOW SILL.
- MINIMUM MOUNTING HEIGHT: N/A
- SIGN FACE SQ. FOOTAGE (ALLOWED): 112 MAX AGGREGATE SF
- ILLUMINATION: INTERNAL

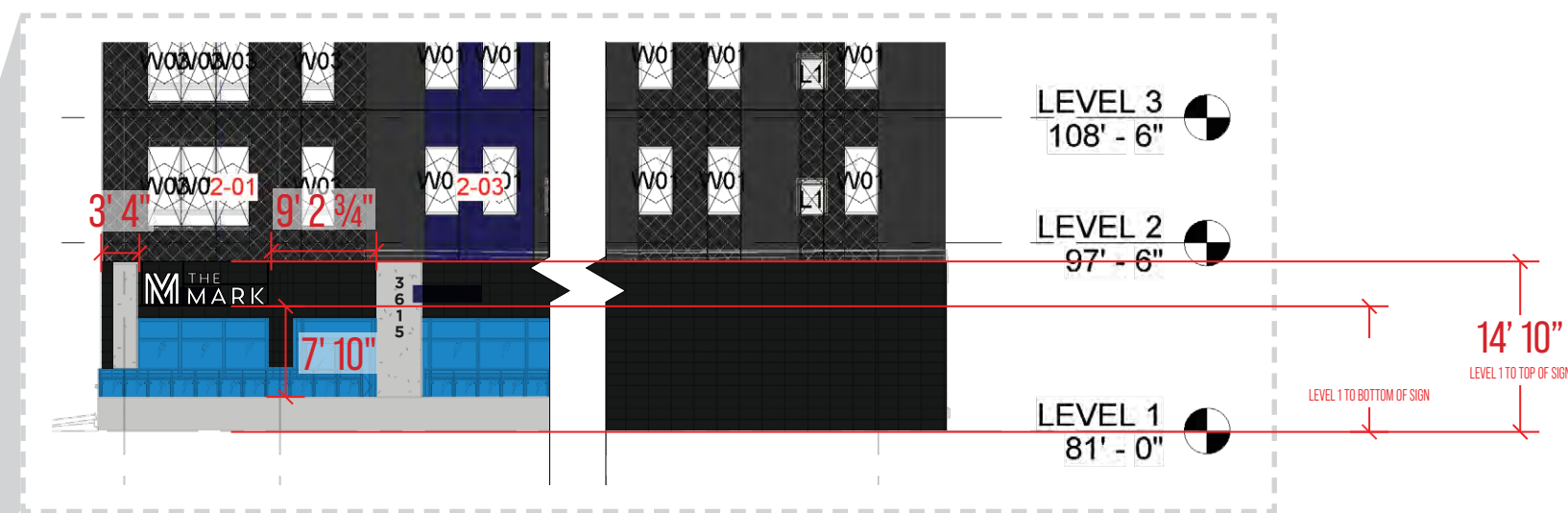
DESIGN POLICY: Please check the proof for accuracy. Upon project & design approval, the customer releases The Sign Brothers, LLC from any errors appearing on the art that may be discovered after production or installation. All custom designs are property of The Sign Brothers, LLC and may not be duplicated without express written permission. The Sign Brothers, LLC hereby assert intellectual property rights for the designs contained herein. Please contact your project manager or design department with any questions.

LP - The Mark at Philadelphia
3615 Chestnut St, Philadelphia, PA 19104

CAN.5
CANOPY SIGN
(EAST ELEVATION)



EAST ELEVATION
SCALE: NTS



EAST ELEVATION
SCALE: 1/16" = 1'

SIGN TYPE NOT ENGINEERED

QTY: 1
ACCOUNT MANAGER: Phillip Henry

DATE	VERSION	DSR
10.06.2022	1	JB
02.16.2023	2	JB
10.20.2023	3	JB

PAGE: 21
FILEPATH:
\\SBServer\Z\Jobs\Signature Clients\Landmark Properties\The Mark\The Mark at Philadelphia

MATERIALS & COLORS

- M1** 0.080" ALUMINUM
- A1** 3/16" ACRYLIC

SIGN CODE: ILLUMINATED CANOPY SIGN

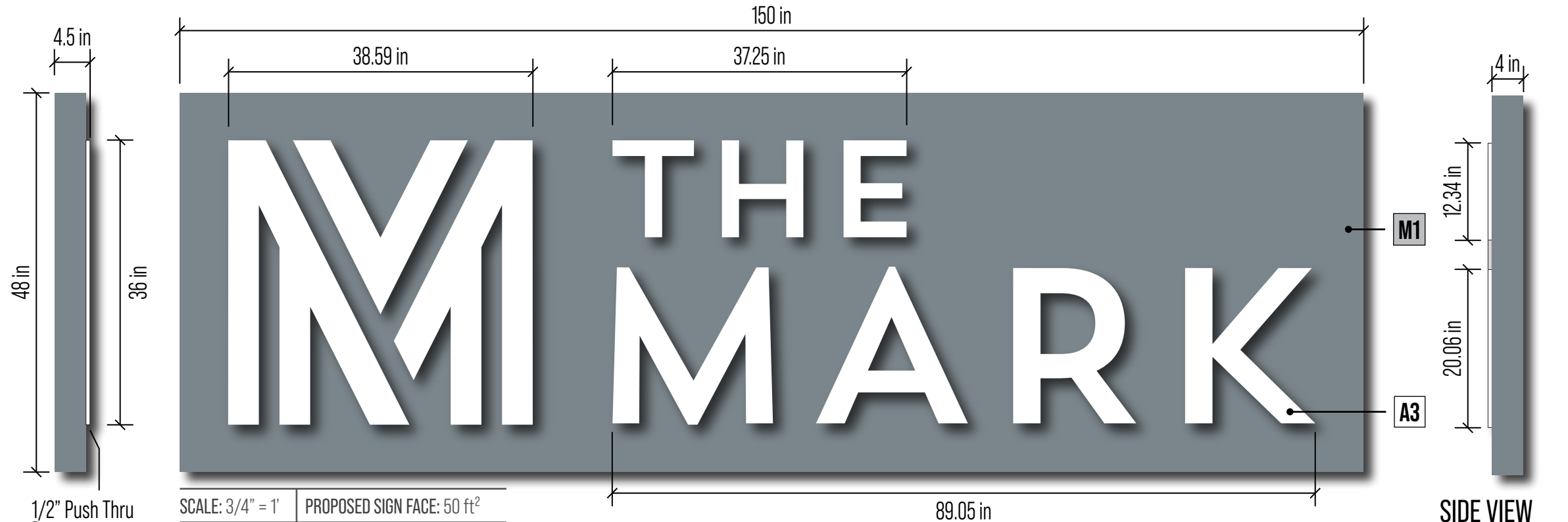
- MAX MOUNTING HEIGHT: THE LOWER OF THE ROOF LINE OR SECOND FLOOR WINDOW SILL. - ILLUMINATION: INTERNAL
- MINIMUM MOUNTING HEIGHT: N/A
- SIGN FACE SQ. FOOTAGE (ALLOWED): 112 MAX AGGREGATE SF

FOR PERMITS ONLY

DESIGN POLICY: Please check the proof for accuracy. Upon project & design approval, the customer releases The Sign Bros., LLC from any errors appearing on the art that may be discovered after production or installation. All custom designs are property of The Sign Bros., LLC and may not be duplicated without express written permission. The Sign Bros., LLC hereby assert intellectual property rights for the designs contained herein. Please contact your project manager or design department with any questions.

LP - The Mark at Philadelphia
3615 Chestnut St, Philadelphia, PA 19104

EWS.6
EXTERIOR WALL SIGN
(SOUTH ELEVATION)



MOUNTING METHOD:
MOUNTING HARDWARE AND BLOCKING REQUIREMENTS TO BE SPECIFIED BY SIGN ENGINEER.

- ELECTRICAL REQUIREMENTS**
- 120V 20A CIRCUIT REQUIRED.
 - UL LABELS REQUIRED AWAY FROM PUBLIC VIEW.
 - ALL ELECTRICAL PRIMARY CIRCUITS MUST BE DEDICATED ISOLATED CIRCUITS PROVIDED BY CLIENT.
 - GC TO PROVIDE ACCESSIBILITY TO REMOTE TRANSFORMER LOCATION FOR INSTALLATION AND SERVICE.
 - ALL ELECTRICAL RUNS AND INTERNAL CONNECTIONS TO BE DONE BY CERTIFIED ELECTRICIAN. SB WILL MAKE FINAL CONNECTION TO SIGN; POWER MUST BE SHUT OFF FOR FINAL CONNECTION.

SCALE: 3/4" = 1' PROPOSED SIGN FACE: 50 ft²

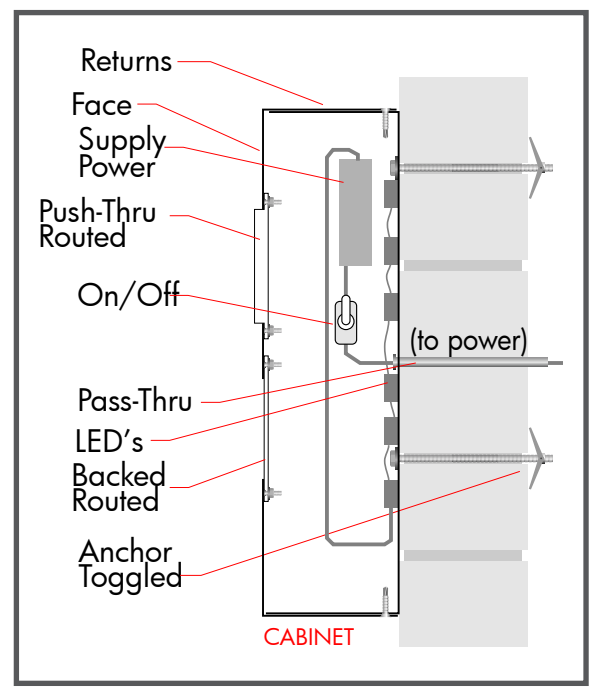
SCOPE:
1. MANUFACTURE AND INSTALL (1) CABINET WITH 3/4" PUSH THRU WHITE ACRYLIC LETTERING, PAINTED 430C.

SIGN TYPE NOT ENGINEERED

SIDE VIEW
SCALE: 3/4" = 1'



NIGHT VIEW



METHOD OF ATTACHMENT

DESIGN SPECIFICATIONS	
IBC 2018 with PA amendments	
ASCE 7-16	Minimum Design Loads for Buildings & Other Structures
ACI 318-14	Building Code Requirements for Structural Concrete
ANSI/AISC 360-16	Specification for Structural Steel Buildings
DESIGN LOADS	
Wind Exposure	V = 115 mph
Risk Cat.	C

QTY: 1
ACCOUNT MANAGER: Phillip Henry

DATE	VERSION	DSR
10.06.2022	1	JB
02.16.2023	2	JB
10.20.2023	3	JB

PAGE: 22
FILEPATH:
\\SBServer\Z\Jobs\Signature Clients\Landmark Properties\The Mark\The Mark at Philadelphia

MATERIALS & COLORS

M1	0.080" ALUMINUM
A3	3/4" ACRYLIC

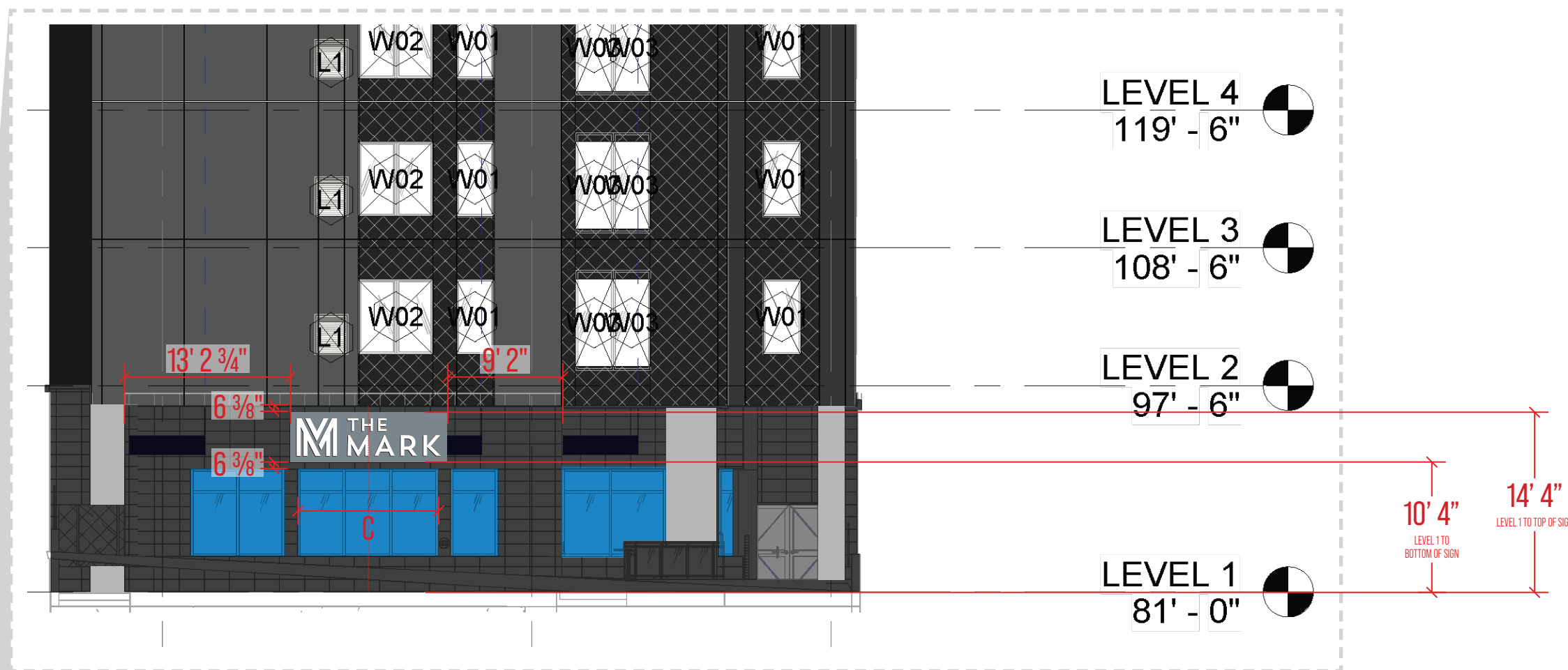
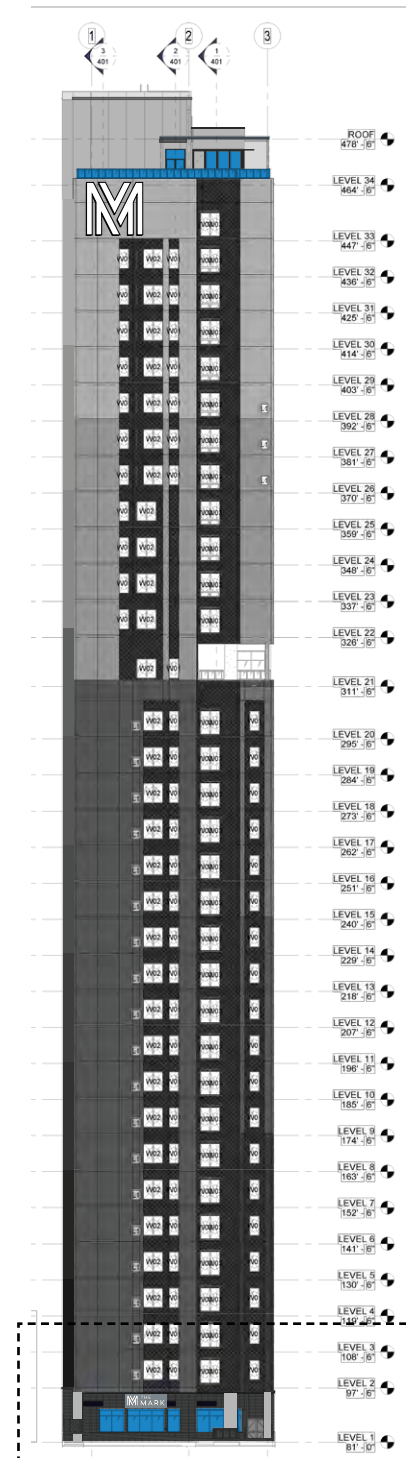
SIGN CODE: ILLUMINATED WALL SIGN

- MAX MOUNTING HEIGHT: THE LOWER OF THE ROOF LINE OR SECOND FLOOR WINDOW SILL.
- MINIMUM MOUNTING HEIGHT: N/A
- SIGN FACE SQ. FOOTAGE (ALLOWED): 112 MAX AGGREGATE SF
- ILLUMINATION: INTERNAL

DESIGN POLICY: Please check the proof for accuracy. Upon project & design approval, the customer releases The Sign Brothers, LLC from any errors appearing on the art that may be discovered after production or installation. All custom designs are property of The Sign Brothers, LLC and may not be duplicated without express written permission. The Sign Brothers, LLC hereby assert intellectual property rights for the designs contained herein. Please contact your project manager or design department with any questions.

LP - The Mark at Philadelphia
3615 Chestnut St, Philadelphia, PA 19104

EWS.6
EXTERIOR WALL SIGN
(SOUTH ELEVATION)



SOUTH ELEVATION

SCALE: 3/32" = 1'

SIGN TYPE NOT ENGINEERED

MATERIALS & COLORS

- M1** 0.080" ALUMINUM
- A3** 3/4" ACRYLIC

SIGN CODE: ILLUMINATED WALL SIGN

- MAX MOUNTING HEIGHT: THE LOWER OF THE ROOF LINE OR SECOND FLOOR WINDOW SILL.
- MINIMUM MOUNTING HEIGHT: N/A
- SIGN FACE SQ. FOOTAGE (ALLOWED): 112 MAX AGGREGATE SF
- ILLUMINATION: INTERNAL

FOR PERMITS ONLY

QTY: 1

ACCOUNT MANAGER: Phillip Henry

DATE	VERSION	DSR
10.06.2022	1	JB
02.16.2023	2	JB
10.20.2023	3	JB

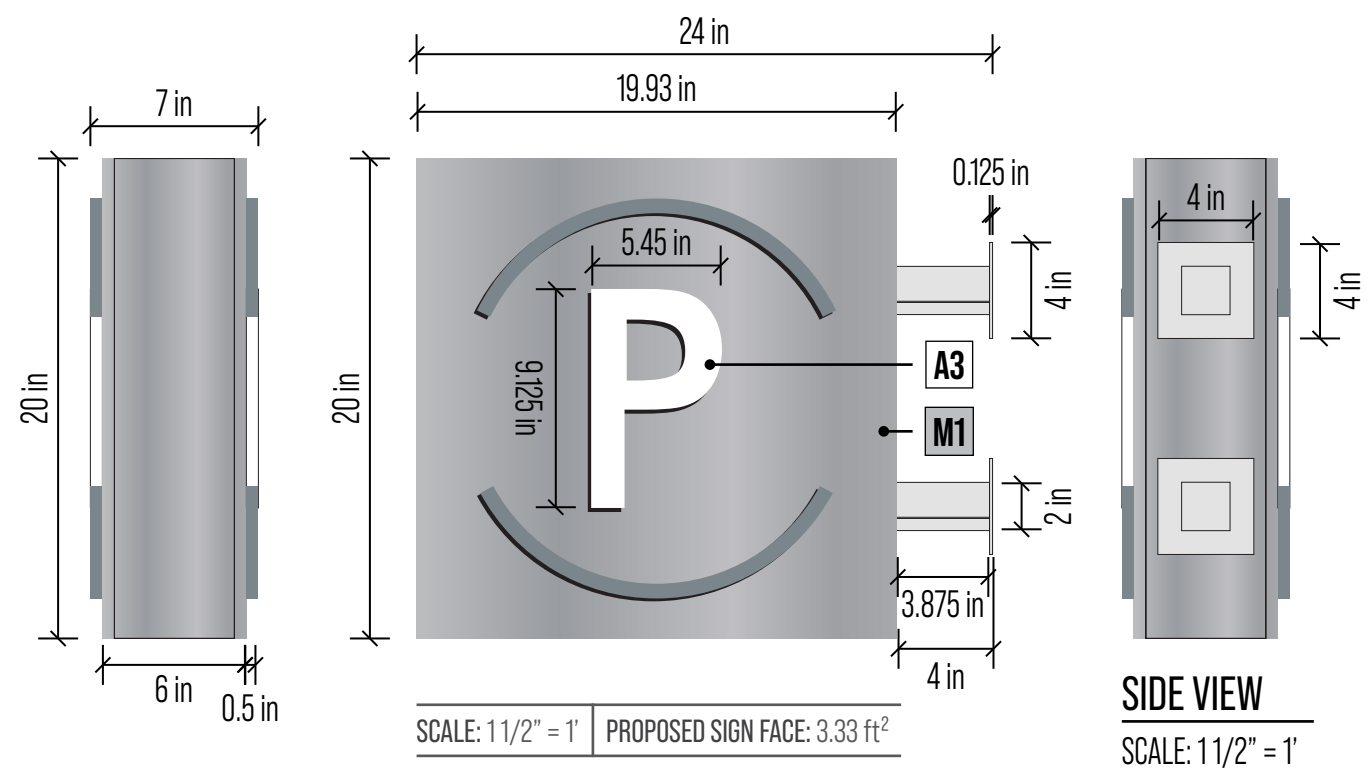
PAGE: 23

FILEPATH:
\\SBServer\Z\Jobs\Signature Clients\Landmark Properties\The Mark\The Mark at Philadelphia

DESIGN POLICY: Please check the proof for accuracy. Upon project & design approval, the customer releases The Sign Brothers, LLC from any errors appearing on the art that may be discovered after production or installation. All custom designs are property of The Sign Brothers, LLC and may not be duplicated without express written permission. The Sign Brothers, LLC hereby assert intellectual property rights for the designs contained herein. Please contact your project manager or design department with any questions.

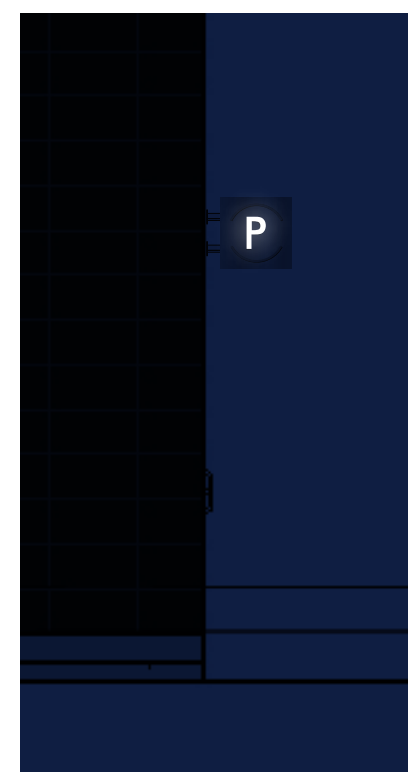
LP - The Mark at Philadelphia
3615 Chestnut St, Philadelphia, PA 19104

PBL
PARKING BLADE SIGN
(NORTH ELEVATION)

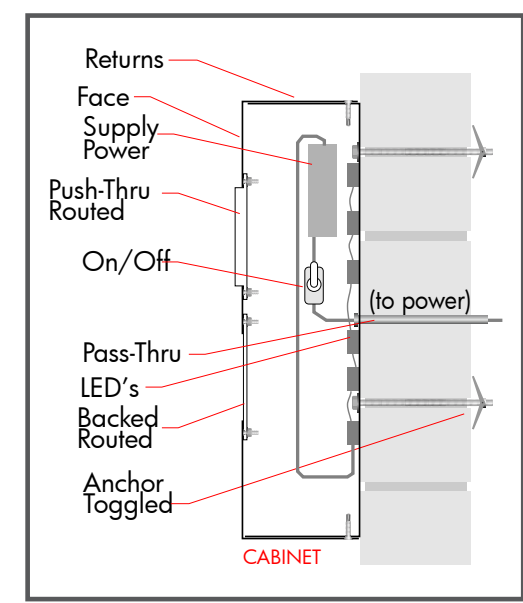


MOUNTING METHOD:
MOUNTING HARDWARE AND BLOCKING REQUIREMENTS TO BE SPECIFIED BY SIGN ENGINEER.

- ELECTRICAL REQUIREMENTS**
- 120V 20A CIRCUIT REQUIRED.
 - UL LABELS REQUIRED AWAY FROM PUBLIC VIEW.
 - ALL ELECTRICAL PRIMARY CIRCUITS MUST BE DEDICATED ISOLATED CIRCUITS PROVIDED BY CLIENT.
 - GC TO PROVIDE ACCESSIBILITY TO REMOTE TRANSFORMER LOCATION FOR INSTALLATION AND SERVICE.
 - ALL ELECTRICAL RUNS AND INTERNAL CONNECTIONS TO BE DONE BY CERTIFIED ELECTRICIAN. SB WILL MAKE FINAL CONNECTION TO SIGN; POWER MUST BE SHUT OFF FOR FINAL CONNECTION.

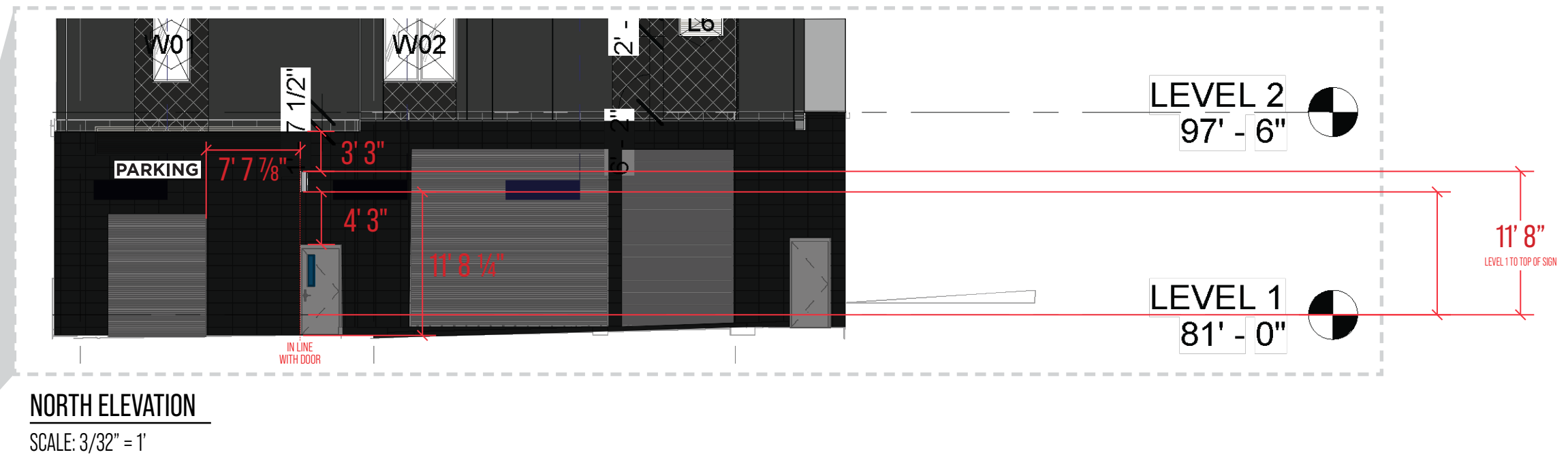
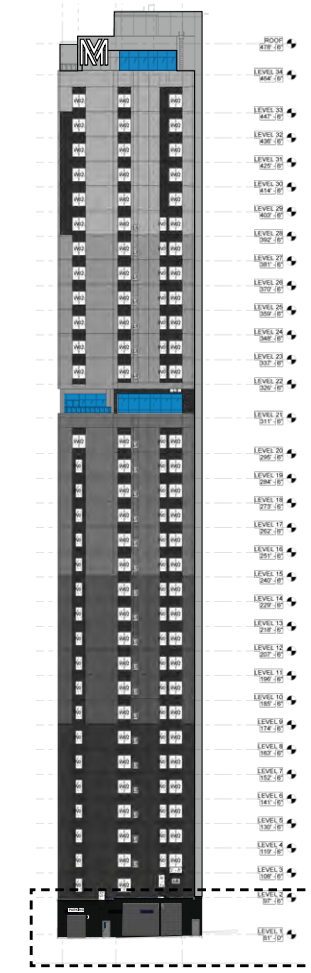


NIGHT VIEW



METHOD OF ATTACHMENT

SIGN TYPE NOT ENGINEERED



MATERIALS & COLORS

M1 0.080" ALUMINUM

A3 3/4" ACRYLIC

SIGN CODE: ILLUMINATED PROJECTING WALL SIGN

- MAX MOUNTING HEIGHT: THE LOWER OF THE ROOF LINE OR SECOND FLOOR WINDOW SILL.
- MINIMUM MOUNTING HEIGHT: N/A
- SIGN FACE SQ. FOOTAGE (ALLOWED): 112 MAX AGGREGATE SF
- ILLUMINATION: INTERNAL

FOR PERMITS ONLY

QTY: 1
ACCOUNT MANAGER: Phillip Henry

DATE	VERSION	DSR
10.06.2022	1	JB
02.16.2023	2	JB
10.20.2023	3	JB

PAGE: 24
FILEPATH:
\\SBServer\Z\Jobs\Signature Clients\Landmark Properties\The Mark\The Mark at Philadelphia

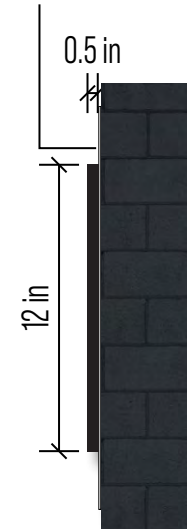
DESIGN POLICY: Please check the proof for accuracy. Upon project & design approval, the customer releases The Sign Brothers, LLC from any errors appearing on the art that may be discovered after production or installation. All custom designs are property of The Sign Brothers, LLC and may not be duplicated without express written permission. The Sign Brothers, LLC hereby assert intellectual property rights for the designs contained herein. Please contact your project manager or design department with any questions.

LP - The Mark at Philadelphia
3615 Chestnut St, Philadelphia, PA 19104

PDE
PARKING DECK ENTRANCE
(NORTH ELEVATION)



0.080" Aluminum Panel, Painted White



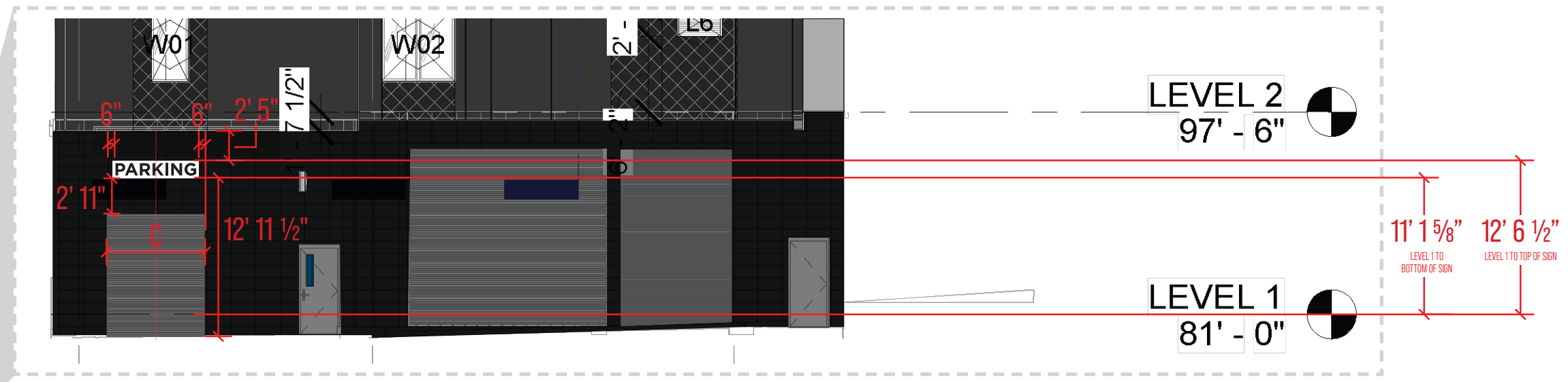
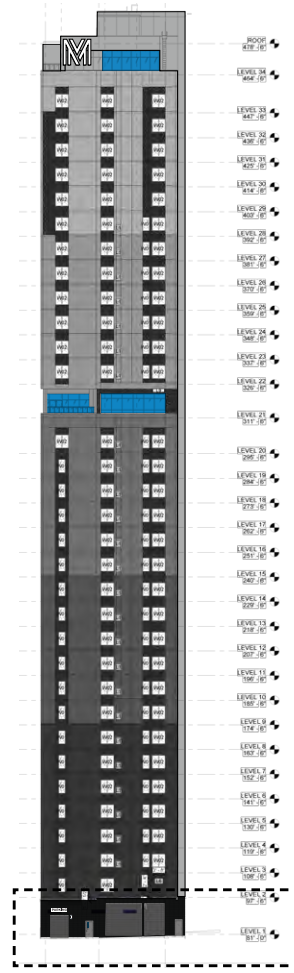
SIDE VIEW
SCALE: 11/2" = 1'

MOUNTING METHOD:
LETTERS TO BE STUD MOUNTED TO PANEL, PANEL TO BE FLUSH MOUNTED TO WALL.

SCALE: 1 1/2" = 1' | PROPOSED SIGN FACE: 9.80 ft²

SCOPE:
1. MANUFACTURE AND INSTALL (1) 0.080" ALUMINUM PANEL, PAINTED WHITE, WITH 1/2" ACRYLIC LETTERS, PAINTED BLACK WITH SATIN FINISH.

SIGN TYPE NOT ENGINEERED



NORTH ELEVATION
SCALE: 3/32" = 1'

MATERIALS & COLORS

- M1** 0.080" ALUMINUM
- A2** 1/2" ACRYLIC

SIGN CODE: NON-ILLUMINATED WALL SIGN

- MAX MOUNTING HEIGHT: THE LOWER OF THE ROOF LINE OR SECOND FLOOR WINDOW SILL.
- MINIMUM MOUNTING HEIGHT: N/A
- SIGN FACE SQ. FOOTAGE (ALLOWED): 112 MAX AGGREGATE SF
- ILLUMINATION: NONE

FOR PERMITS ONLY

QTY: 1

ACCOUNT MANAGER: Phillip Henry

DATE	VERSION	DSR
10.06.2022	1	JB
02.16.2023	2	JB
10.20.2023	3	JB

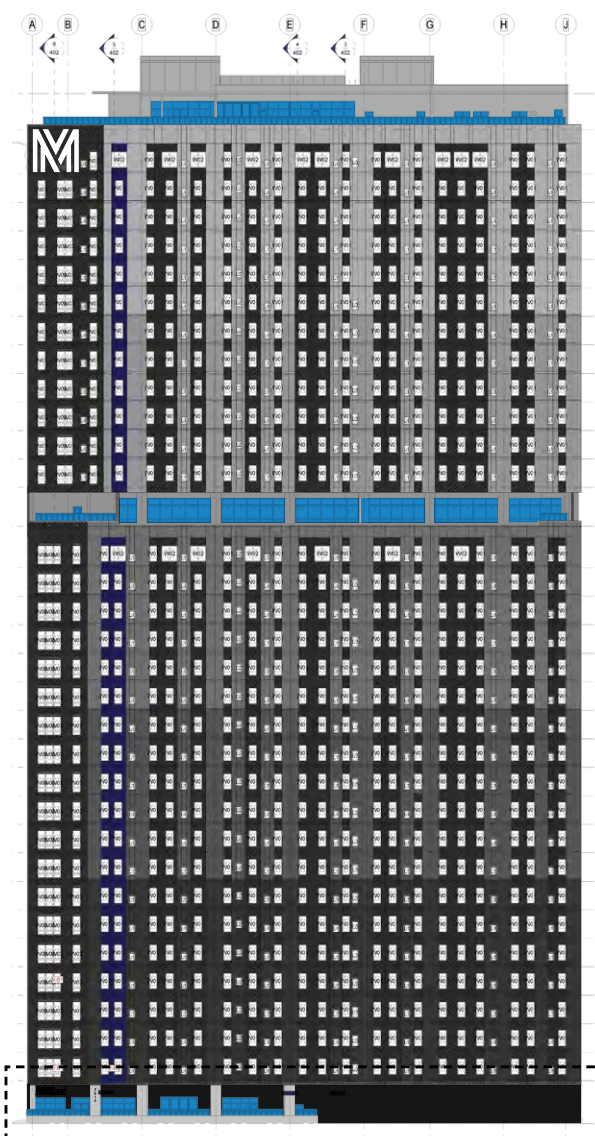
PAGE: 25

FILEPATH:
\\SBServer\Z\Jobs\Signature Clients\Landmark Properties\The Mark\The Mark at Philadelphia

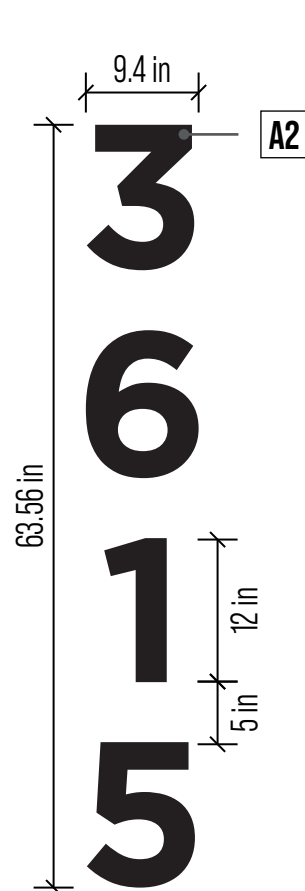
DESIGN POLICY: Please check the proof for accuracy. Upon project & design approval, the customer releases The Sign Brothers, LLC from any errors appearing on the art that may be discovered after production or installation. All custom designs are property of The Sign Brothers, LLC and may not be duplicated without express written permission. The Sign Brothers, LLC hereby assert intellectual property rights for the designs contained herein. Please contact your project manager or design department with any questions.

LP - The Mark at Philadelphia
3615 Chestnut St, Philadelphia, PA 19104

ADD
STREET ADDRESS
(EAST ELEVATION)



EAST ELEVATION
SCALE: NTS



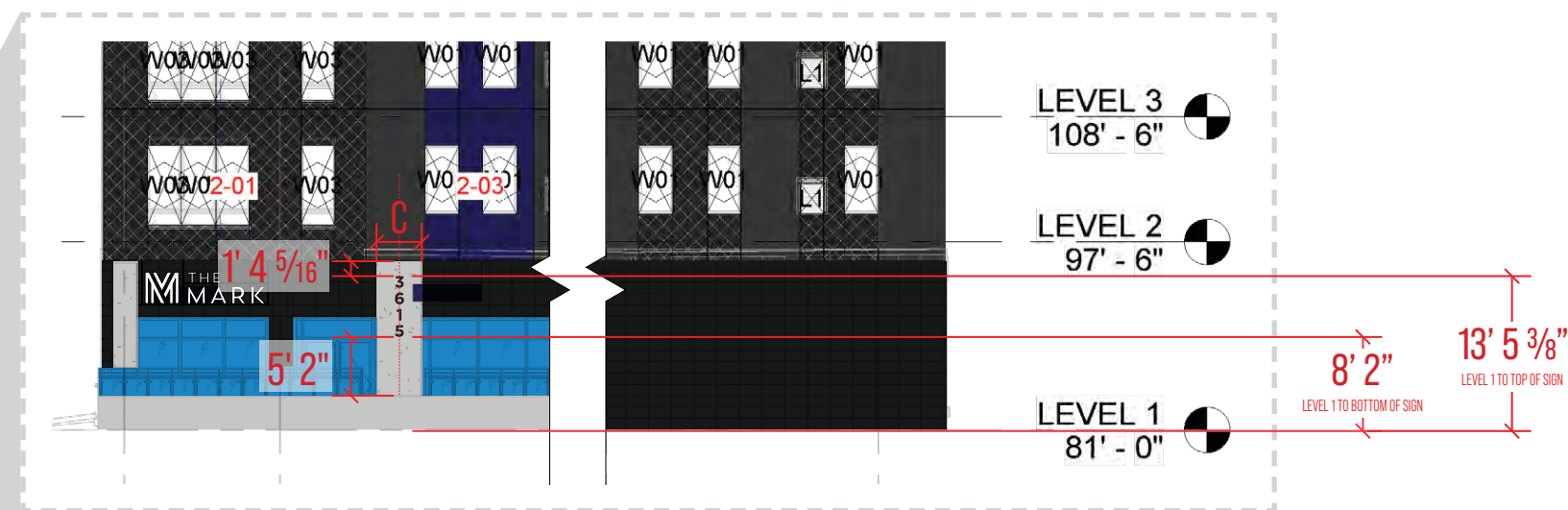
SCALE: 3/4" = 1' | PROPOSED SIGN FACE: 3.33 ft²

SCOPE:
1. MANUFACTURE AND INSTALL (1) SET ADDRESS NUMBERS, 1/2" ACRYLIC PAINTED BLACK AND STUD MOUNTED TO CONCRETE PILLAR.



SIDE VIEW
SCALE: 3/4" = 1'

SIGN TYPE NOT ENGINEERED



EAST ELEVATION
SCALE: 1/16" = 1'

QTY: 1
ACCOUNT MANAGER: Phillip Henry

DATE	VERSION	DSR
10.06.2022	1	JB
02.16.2023	2	JB
10.20.2023	3	JB

PAGE: 26

FILEPATH:
\\SBServer\Z\Jobs\Signature Clients\Landmark Properties\The Mark\The Mark at Philadelphia

MATERIALS & COLORS

A2 1/2" ACRYLIC

SIGN CODE: NON-ILLUMINATED WALL SIGN

- MAX MOUNTING HEIGHT: THE LOWER OF THE ROOF LINE OR SECOND FLOOR WINDOW SILL. - ILLUMINATION: NONE
- MINIMUM MOUNTING HEIGHT: N/A
- SIGN FACE SQ. FOOTAGE (ALLOWED): 112 MAX AGGREGATE SF

DESIGN POLICY: Please check the proof for accuracy. Upon project & design approval, the customer releases The Sign Brothers, LLC from any errors appearing on the art that may be discovered after production or installation. All custom designs are property of The Sign Brothers, LLC and may not be duplicated without express written permission. The Sign Brothers, LLC hereby assert intellectual property rights for the designs contained herein. Please contact your project manager or design department with any questions.