

BROWN EXPEDITING SERVICES

June 3, 2024

Philadelphia Art Commission
1515 Arch Street, 13th Floor
Philadelphia, PA 19102

Re: Sweetgreen
924 Walnut Street
Thomas Jefferson Univ.
Philadelphia, PA 19107

To Whom it May Concern:

Please review this package for a new illuminated flat wall sign measuring 10"x 8'-10 1/8" and a hanging neon panel window sign 35 5/8"x 53 3/8".

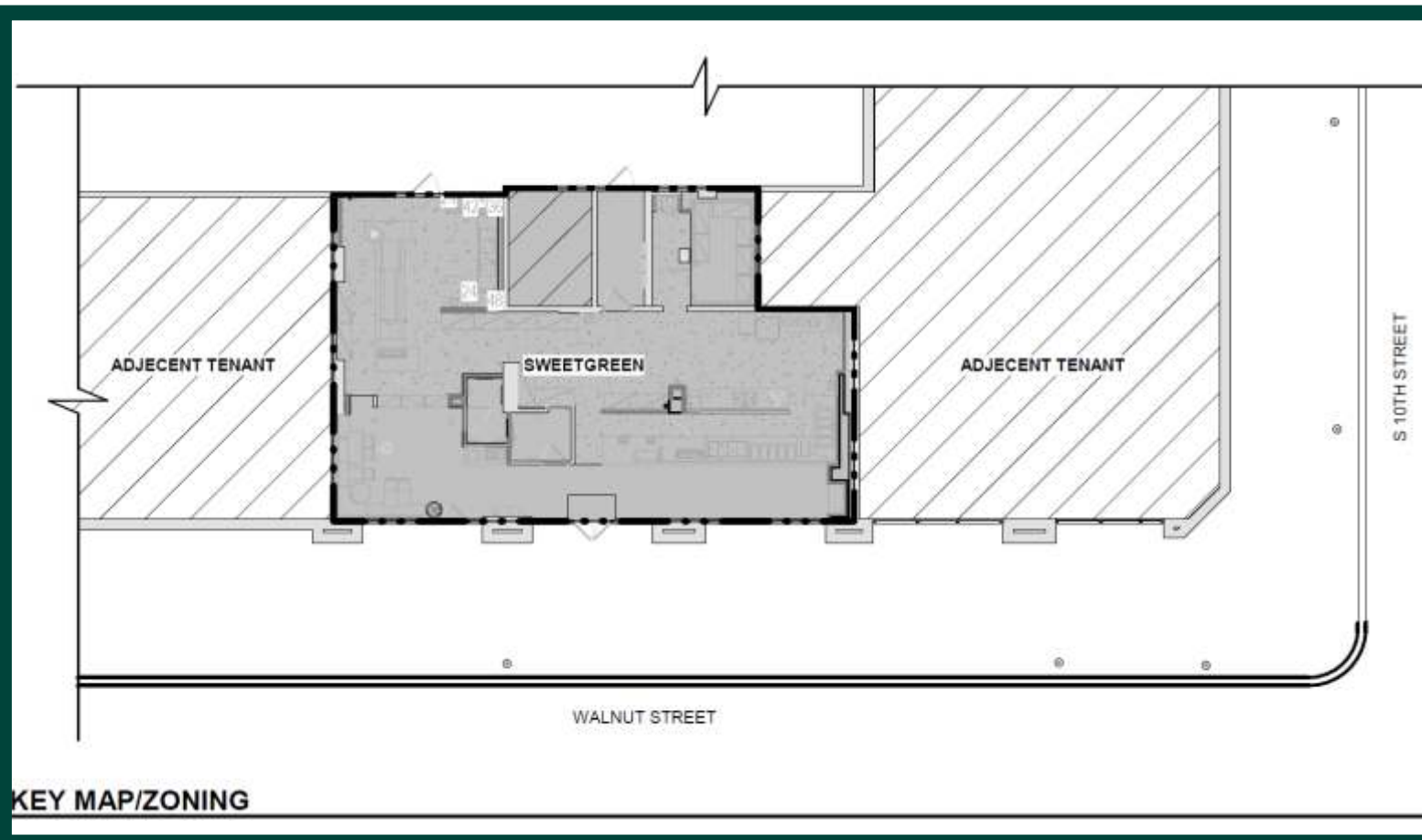
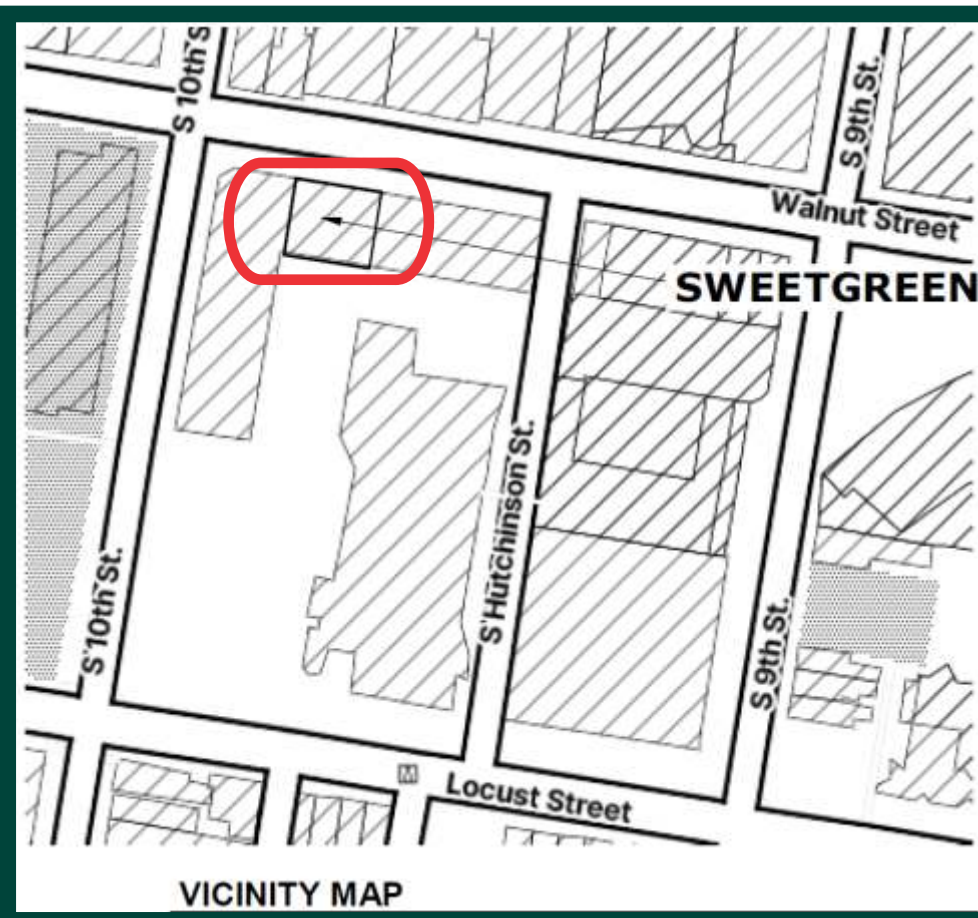
If you need any further information, please contact me.

Thank you,
Linda

sweetgreen

Store 025 Suite
10TH + WALNUT

924 WALNUT STREET
PHILADELPHIA, PA 19107



93 Industry Drive
PO Box 349
Versailles, KY 40383
859.879.1199



Store 025
Suite 10TH +
WALNUT

924 WALNUT STREET
PHILADELPHIA, PA 19107

This sign is intended to be installed in accordance with the requirements of Article 600 of the National Electrical Code and/or other applicable local codes. This includes proper grounding and bonding of the sign.

RUGGLES SIGN DOES NOT PROVIDE PRIMARY ELECTRICAL TO SIGN LOCATION!



Submittal Date: 02/12/24
Acct Rep: Callie Baney
Designer: Jason Elmore

REVISIONS

r1: _____	r7: _____
r2: _____	r8: _____
r3: _____	r9: _____
r4: _____	r10: _____
r5: _____	r11: _____
r6: _____	r12: _____

PLAN VIEW



A SG10FL
Qty - 1

B SG relo
Qty - 1



Ruggles
SIGN

93 Industry Drive
PO Box 349
Versailles, KY 40383
859.879.1199



sg

Store 025
Suite 10TH +
WALNUT

924 WALNUT STREET
PHILADELPHIA, PA 19107

This sign is intended to be installed in accordance with the requirements of Article 600 of the National Electrical Code and/or other applicable local codes. This includes proper grounding and bonding of the sign.

RUGGLES SIGN DOES NOT PROVIDE PRIMARY ELECTRICAL TO SIGN LOCATION!



Submittal Date: 02/12/24
Acct Rep: Callie Baney
Designer: Jason Elmore

REVISIONS

r1: _____	r7: _____
r2: _____	r8: _____
r3: _____	r9: _____
r4: _____	r10: _____
r5: _____	r11: _____
r6: _____	r12: _____

STOREFRONT RENDERING



Existing neon sign from 'Third Ward' installed behind glass

(A) SG10FL Qty - 1

(B) SG relo Qty - 1



93 Industry Drive
PO Box 349
Versailles, KY 40383
859.879.1199



Store 025
Suite 10TH +
WALNUT

924 WALNUT STREET
PHILADELPHIA, PA 19107

This sign is intended to be installed in accordance with the requirements of Article 600 of the National Electrical Code and/or other applicable local codes. This includes proper grounding and bonding of the sign.

RUGGLES SIGN DOES NOT PROVIDE PRIMARY ELECTRICAL TO SIGN LOCATION!



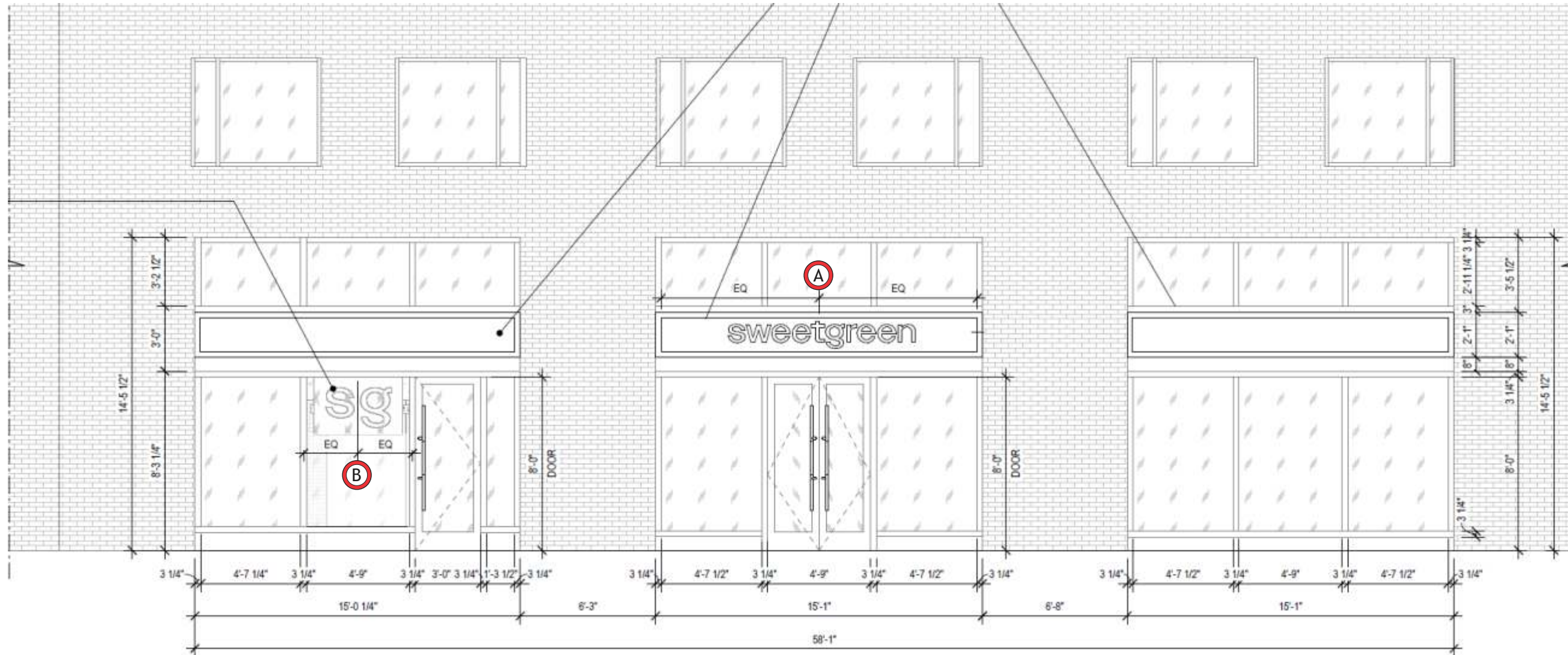
Submittal Date: 02/12/24
Acct Rep: Callie Baney
Designer: Jason Elmore

REVISIONS

r1: _____	r7: _____
r2: _____	r8: _____
r3: _____	r9: _____
r4: _____	r10: _____
r5: _____	r11: _____
r6: _____	r12: _____

STOREFRONT - ELEVATION

Scale: 3/16" = 1' - 0"



A SG10FL
Qty - 1

B SG relo
Qty - 1



Ruggles
SIGN

93 Industry Drive
PO Box 349
Versailles, KY 40383
859.879.1199



Store 025
Suite 10TH +
WALNUT

924 WALNUT STREET
PHILADELPHIA, PA 19107

This sign is intended to be installed in accordance with the requirements of Article 600 of the National Electrical Code and/or other applicable local codes. This includes proper grounding and bonding of the sign.

RUGGLES SIGN DOES NOT PROVIDE PRIMARY ELECTRICAL TO SIGN LOCATION!

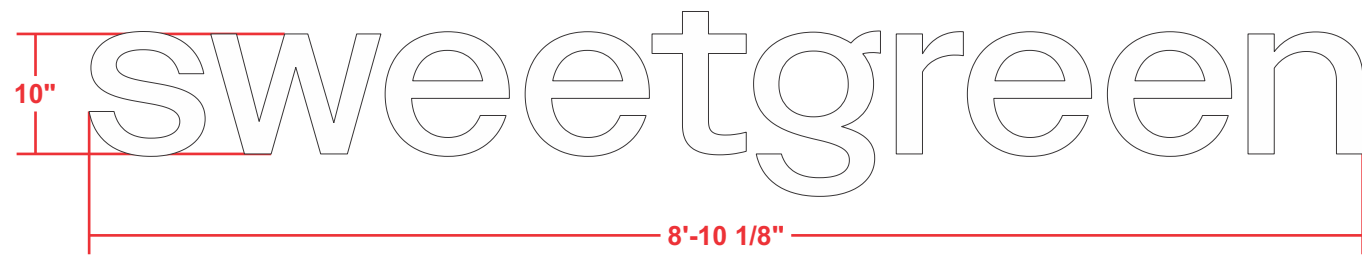


Submittal Date: 02/12/24
Acct Rep: Callie Baney
Designer: Jason Elmore

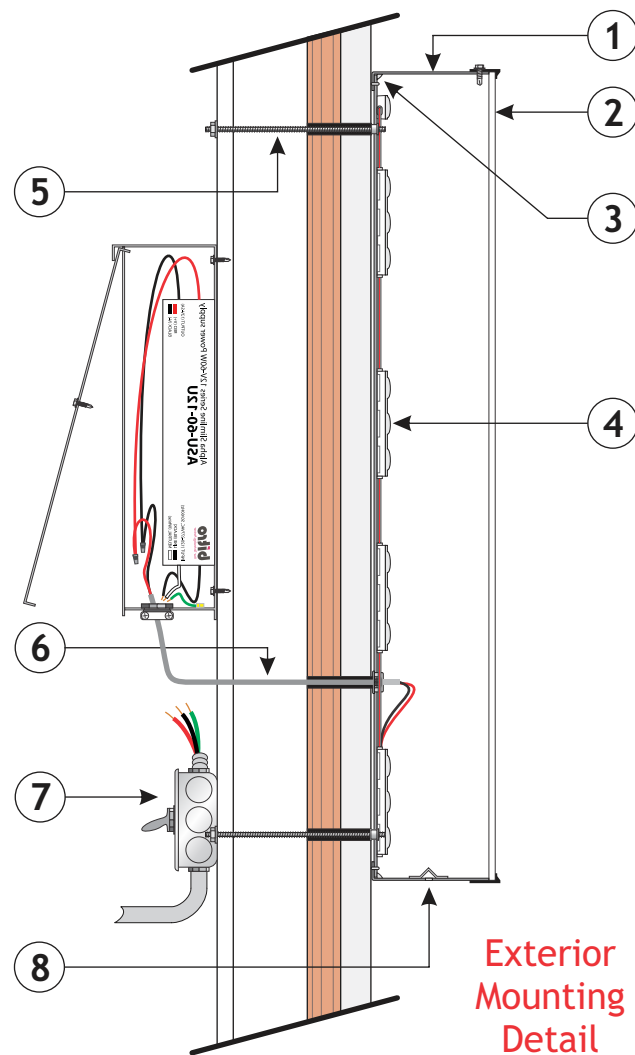
REVISIONS

r1: _____	r7: _____
r2: _____	r8: _____
r3: _____	r9: _____
r4: _____	r10: _____
r5: _____	r11: _____
r6: _____	r12: _____

A FACE-LIT CHANNEL LETTERS - ELEVATION
Scale: 3/4" = 1' - 0"



FACE-LIT CHANNEL LETTER - SECTION



SIGN - DETAILS

- 1 3" deep fabricated channel letters painted satin white. All interior surfaces are light reflective high gloss white.
- 2 3/16" thick 7328 white acrylic letter faces with 3/4" trim cap secured to letter return with #8 x 1/2" hex washer head screw, painted to match returns.
- 3 Letter is fully caulked to eliminate any light leaks.
- 4 bitro OpticsPRO 5000K white led units to illuminate letters.
- 5 Letters mount flush to storefront surface with 10-24 rivet nut, with 3/16" all thread rod and 10-24 wiz nut fasteners behind wall.
- 6 SNAP bushing for low voltage pass-thru to bitro Alpha Slimline 12V-60W Power Supply (ASU-60-12U) (120-277 VOLT) contained inside Paige Electric SNAP 2 box (980054C). Secondary connections must be as short as possible.
- 7 Dedicated primary sign circuit and disconnect provided by electrician.
- 8 Drain hole in bottom of letter return with light cover.



93 Industry Drive
PO Box 349
Versailles, KY 40383
859.879.1199



Store 025
Suite 10TH +
WALNUT

924 WALNUT STREET
PHILADELPHIA, PA 19107

This sign is intended to be installed in accordance with the requirements of Article 600 of the National Electrical Code and/or other applicable local codes. This includes proper grounding and bonding of the sign.

RUGGLES SIGN DOES NOT PROVIDE PRIMARY ELECTRICAL TO SIGN LOCATION!

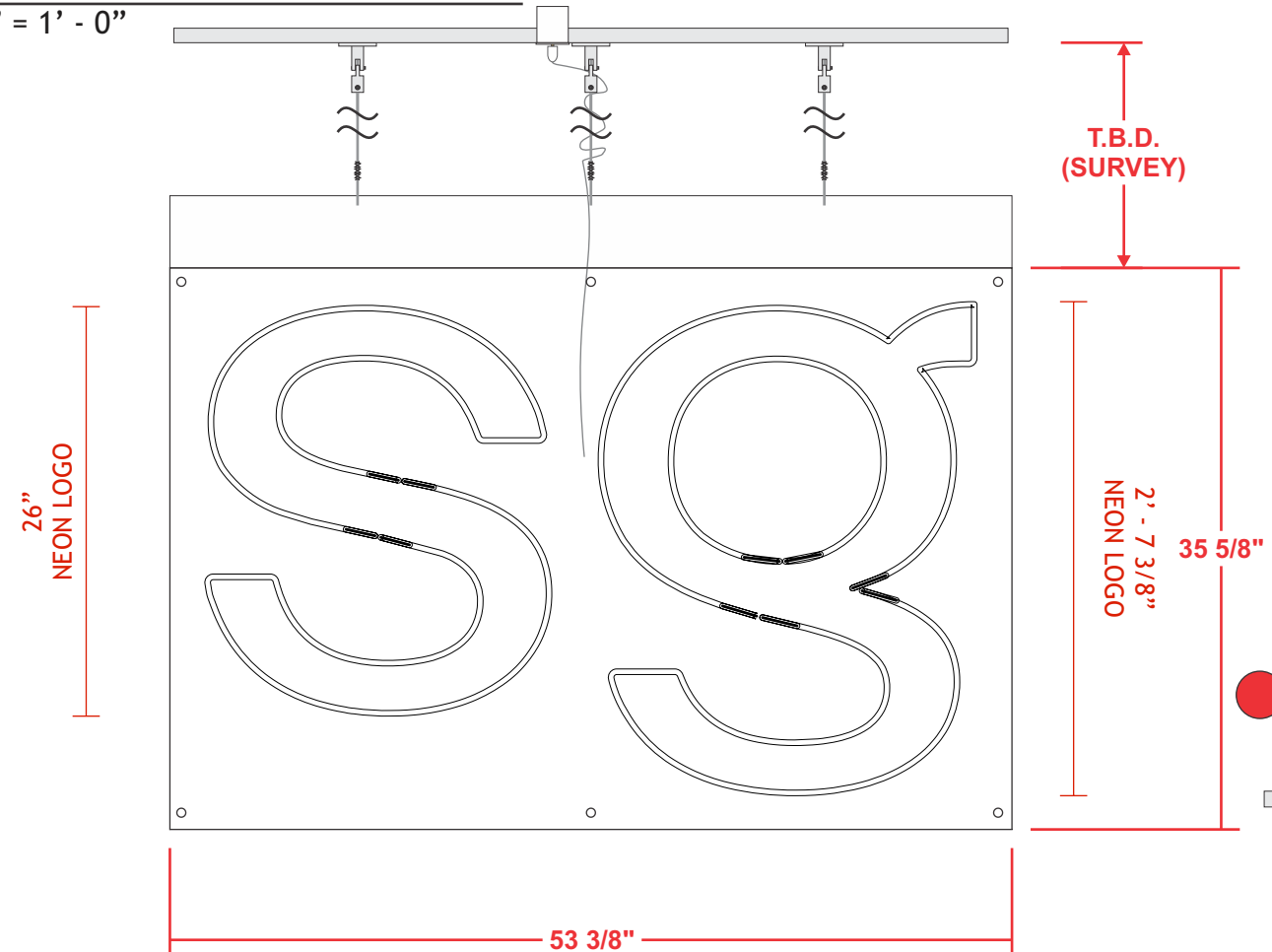


Submittal Date: 02/12/24
Acct Rep: Callie Baney
Designer: Jason Elmore

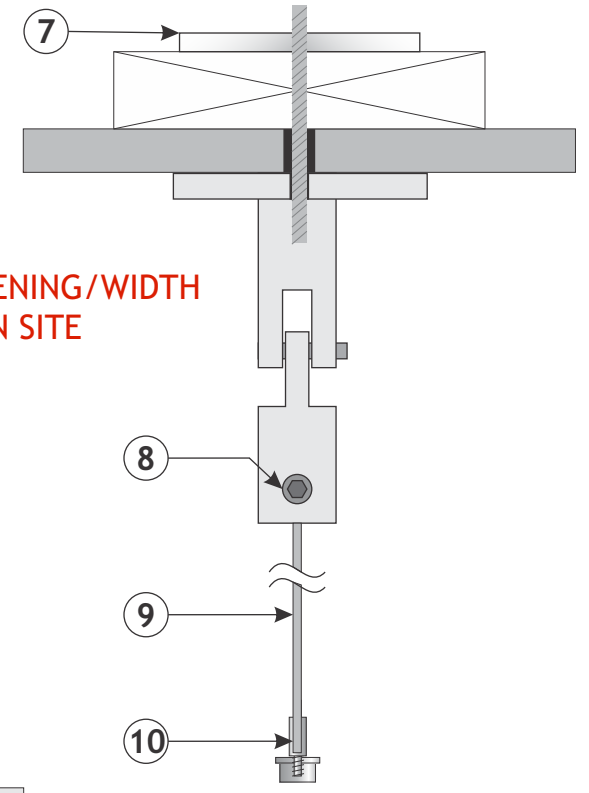
REVISIONS

r1: _____	r7: _____
r2: _____	r8: _____
r3: _____	r9: _____
r4: _____	r10: _____
r5: _____	r11: _____
r6: _____	r12: _____

B NEON LETTERS ON ACRYLIC PANEL - ELEVATION
Scale: 1" = 1' - 0"

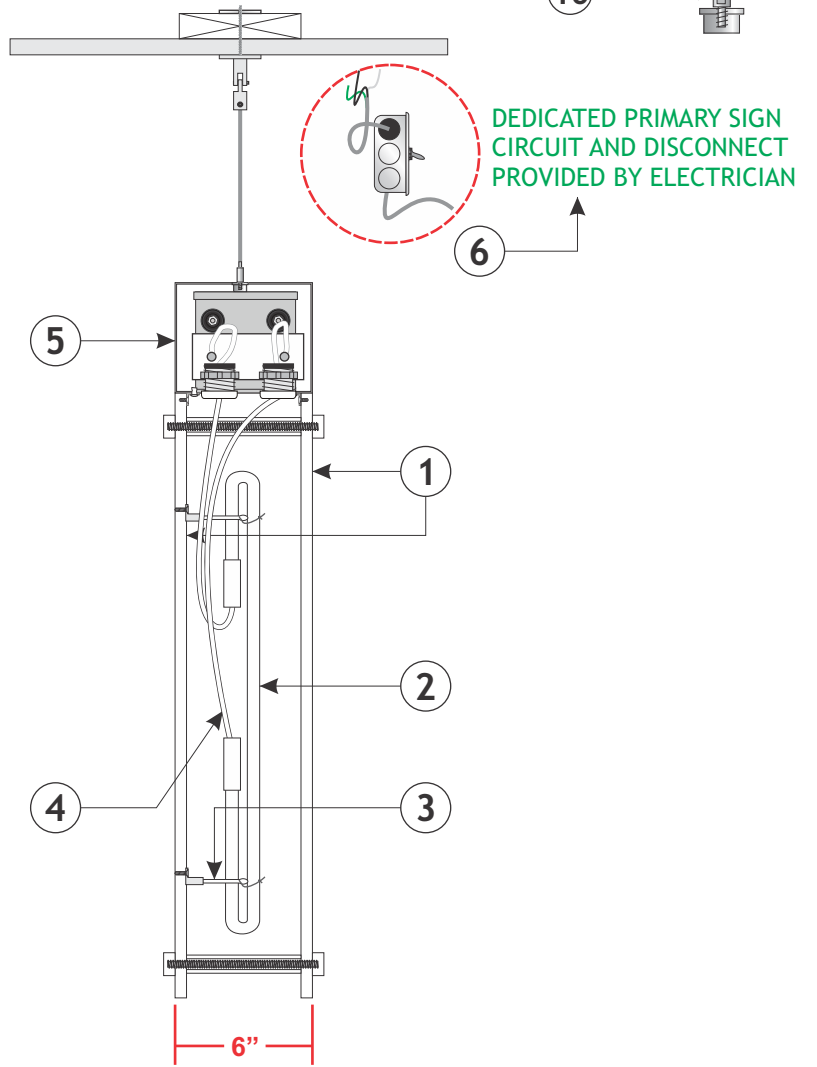


SIGN - MOUNTING DETAIL



FIELD VERIFY WINDOW OPENING/WIDTH AND MOUNTING ON SITE

SIGN - DETAILS



SIGN - DETAILS

- 1 1/2" THICK, ROUTED ACRYLIC PANELS WITH FLAMED EDGES. (1) FOR SIGN MOUNTING AND SECOND TO ENCLOSE NEON. PANELS ARE THRU BOLTED TOGETHER WITH SPACER AND ACRYLIC PUCK ENDS PAINTED WHITE ON FRONT AND BACK
- 2 DOUBLE STROKE 12mm 5000K WHITE NEON LETTERS
- 3 TUBE SUPPORTS AS REQUIRED
- 4 WHITE GTO WIRE FROM NEON THRU ELECTRICAL PASS THRU, TO TRANSFORMERS LOCATED ABOVE PANEL
- 5 (1) 9000K MAGNETIC TRANSFORMER MOUNTED INSIDE 6"X 8" TUBE PAINTED MATTE WHITE
- 6 PRIMARY POWER BY OTHERS
- 7 ALL THREAD ROD AND TOGGLER HANGING HARDWARE ABOVE CEILING
- 8 END STOP FOR CABLE, CABLE SECURED WITH GRUB SCREWS
- 9 3mm STAINLESS STEEL CABLE
- 10 SIGN WILL SUSPEND FROM CEILING WITH 3/64" AIRCRAFT CABLE WITH 15-1420 GRIP LOCK SYSTEM ATTACHED TO EACH CORNER OF THE BOX



93 Industry Drive
PO Box 349
Versailles, KY 40383
859.879.1199



Store 025
Suite 10TH +
WALNUT

924 WALNUT STREET
PHILADELPHIA, PA 19107

This sign is intended to be installed in accordance with the requirements of Article 600 of the National Electrical Code and/or other applicable local codes. This includes proper grounding and bonding of the sign.

RUGGLES SIGN DOES NOT PROVIDE PRIMARY ELECTRICAL TO SIGN LOCATION!



Submittal Date: 02/12/24
Acct Rep: Callie Baney
Designer: Jason Elmore

REVISIONS

r1: _____	r7: _____
r2: _____	r8: _____
r3: _____	r9: _____
r4: _____	r10: _____
r5: _____	r11: _____
r6: _____	r12: _____

924 Walnut St.



Looking West on Walnut St.



Looking East on Walnut St.

