



### workscape

sign#	description	Sq. Ft.	quantity	weight	electrical	notes
1.a	48" Stacked Channel Letters On Blue Background	185.83 ft <sup>2</sup>	1	200 lbs	4.4"@120"	NTE 489.7 ft <sup>2</sup>
1.b	48" Stacked Channel Letters On Blue Background	185.83 ft <sup>2</sup>	1	200 lbs	4.4"@120"	NTE 493.0 ft <sup>2</sup>
2	D/F Under Canopy Sign	5.0 ft <sup>2</sup>	1	25 lbs	N/A	
3.a	Tenant Face	50.2 ft <sup>2</sup>	2 faces	-	N/A	
3.b	Tenant Face	20.8 ft <sup>2</sup>	2 faces	-	N/A	

Sign #1



Sign #2



Sign #3.a



Sign #3.b



### code

This drawing is based on the following code information:

Front Elevation Code Calculation:

Blue Background Included In SF: Yes

6 sq. ft. per LF of building frontage on short frontage, 4 sq. ft. per LF on long side

Long Side Calculation: 122'-5" (122.42') x 4 = 489.7 SF

Short Side Calculation: 82'-2" (82.17') x 6 = 493.0 SF

### document approval

reviewed by:

date:

approved
  approved as noted
  not approved

### note

This drawing is based on the provided resources:

Architect:

Project:

Date:

The general contractor, client, architect, etc. are responsible for supplying updates to Cima as they occur. If there are drawing inaccuracies or questions concerning clarification on signage or signage requirements such as electrical & blocking, please contact:

Lindsey Lupino - Sr. Project Manager  
[llupino@cimanetwork.com](mailto:llupino@cimanetwork.com)

### icon key

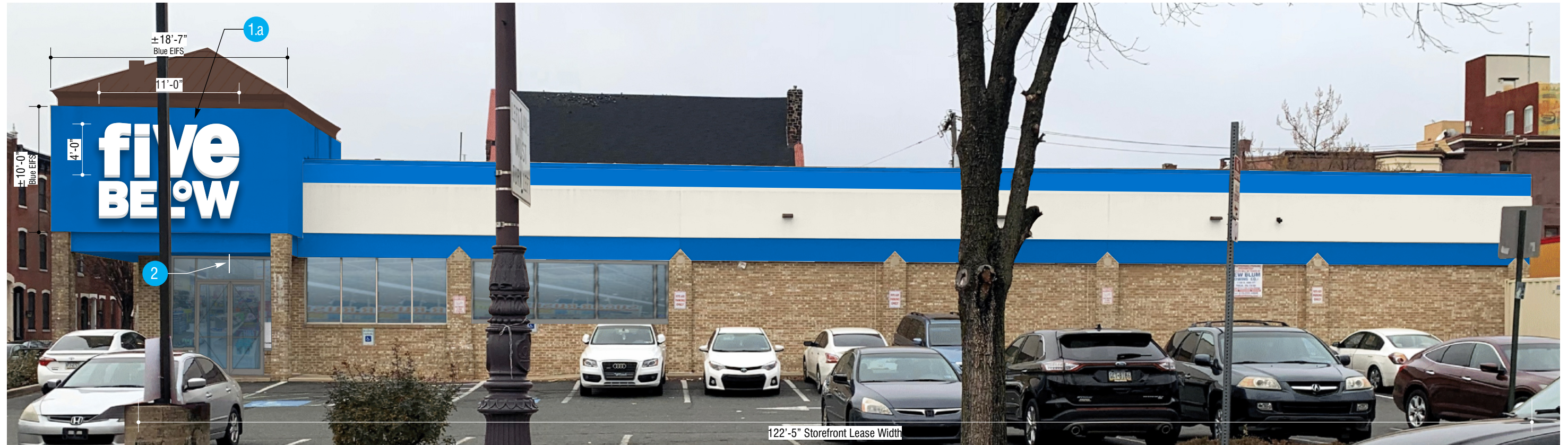
- Remove
- Primary Power J/B Location
- Survey Verified Dimension
- Field Verification Required
- Remain As-Is
- Primary Power Whip Location
- Code Compliance
- Engineer Stamp Required
- Relocate
- Power Supply Location
- ADA Compliant Verified
- Additional Info Required
- Call 811 before you dig

### revisions

rev #	date	by:	description
1	xxxxxx	xx	x
2			
3			
4			
5			
6			
7			
8			

## front elevation

Photo Renderings Are Estimated & May Not Be Accurate. All Proportions, Dimensions And Mounting Details Must Be Verified Via Technical Survey And/Or Architectural Drawings.



1 Front Elevation - Proposed Rendering  
2 Not To Scale

### Survey Notes:

- Verify roof line location.
- Verify available wall area for channel letters.
- Verify electrical access.
- Verify height from hard canopy to grade.
- Verify depth of hard canopy.

Additional Information Req'd.  
Info req'd.

### FIVE BELOW NOTES

#### Facade:

- FB to reface parapet and pilasters to Five Below finishes.
- FB to refurbish existing storefront to like-new condition.
- FB to locate 8' tall storefront doors per tenant's final plans.
- FB to install walkway lighting, 6'-0" min O.C., with additional door light.
- FB to install decorative sconces per Five Below plans.
- G.C. to install HILTI eyebolts in facade for temporary banners, see A40 for loc.
- FB to provide curb cut within 30' of storefront entry.
- FB to provide unobstructed permanent access to sign mountable/electrical connection area.
- FB to provide electrical to center of all applicable sign mountable areas.

#### Signage:

- (2) Tower Signs: 48" internally illuminated stacked channel letters
- Temp Post and Panel: Construction sign placed near entrance
- Walkway sign: 5'-0" x 1'-0" UC Sign
- Pylon Panel: Top & bottom pylon panels.
- Graphics: 1st surface-applied, branded, vinyl graphics to storefront windows

#### Finishes by FB:

- Facade: 3" Dryvit 456 Oyster Shell  
1" Dryvit FIBE-101021S (to match PMS 285 C)
- Cornice EIFS: 1" Dryvit FIBE-101021S (to match PMS 285 C)
- Pilasters: Paint to match baked enamel bronze



This drawing, created by Cima. It is submitted for your exclusive review, for a project being proposed by Cima. It is not to be shown used, reproduced, copied or exhibited in any fashion without the expressed consent of Cima Network, Inc. Scan the QR Code for our website or call us at 267.308.0575

## side elevation

Photo Renderings Are Estimated & May Not Be Accurate. All Proportions, Dimensions And Mounting Details Must Be Verified Via Technical Survey And/Or Architectural Drawings.



1 Side Elevation - Proposed Rendering  
3 Not To Scale

### Survey Notes:

- Verify roof line location.
- Verify available wall area for channel letters.
- Verify electrical access.
- Verify height from hard canopy to grade.
- Verify depth of hard canopy.

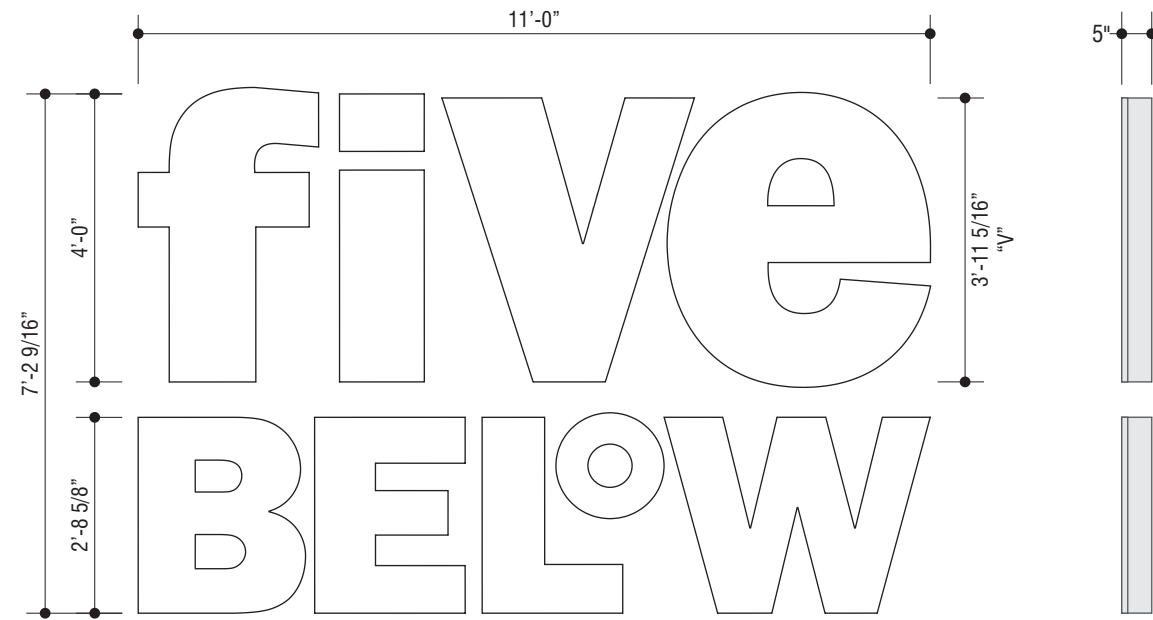
Additional Information Req'd.

## corner elevation

Photo Renderings Are Estimated & May Not Be Accurate. All Proportions, Dimensions And Mounting Details Must Be Verified Via Technical Survey And/Or Architectural Drawings.

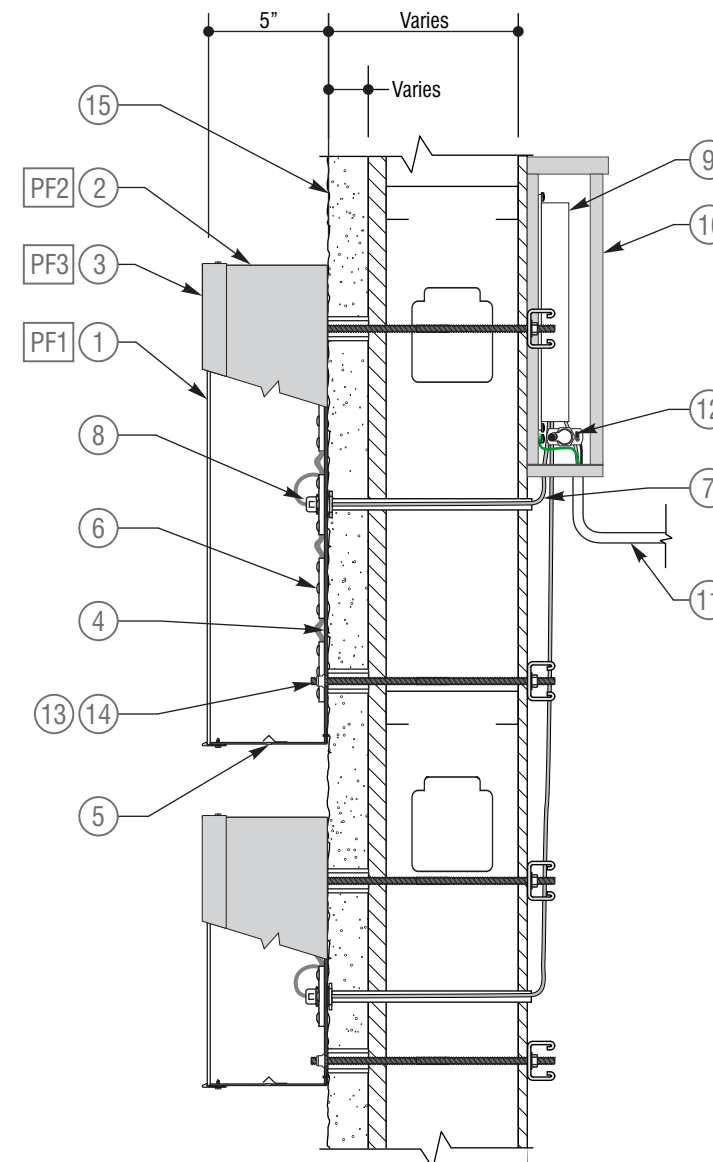


1 Front Elevation - Proposed Rendering  
4 Not To Scale



**1** 48" Stacked Channel Letters - FB-FB48WS-R 79.4 sf  
 Scale: 3/8" = 1' 0"  
 (2 Required)

**2** Side View  
 Scale: 3/8" = 1' 0"



**3** EIFS Attachment Detail  
 Scale: 1-1/2" = 1' 0"

**specifications**

Exterior Fabricated Face Lit LED Channel Letters w/ Trimcap Mounted To EIFS Wall System

**EST WEIGHT:** 200 lbs  
**EST ELECT LOAD:** (4.4) Amps @120 Volt  
**ELECT REQUIREMENTS:** (4) 20 Amp/120 Volt Circuits

**ULTIMATE WIND SPEED:** 125 MPH  
**NOMINAL WIND SPEED:** 112 MPH  
**RISK CATEGORY:** II (3 Sec Peak Gust MPH)  
**WIND IMPORTANCE FACTOR:** I= 1  
**WIND EXPOSURE:** C

**COLORS & FINISHES**  
 Interior Of All Letters To Be Finished White  
 PF1.  **FACE:** #7328 White  
 PF2.  **RETURNS:** Pre-finished Silver Metallic  
 PF3.  **TRIM CAP:** To Match Returns  
 PF4.  **BACKS:** Pre-finished White

**SIGN CONSTRUCTION**  
 1. **FACES:** .177" Thick Acrylic  
 2. **RETURNS:** 040" Aluminum Returns Stapled To Backs  
 3. **TRIM CAP:** 1" Wide w/#8 x 1/2" Lg Pan Head Screws Painted To Match. Trim Cap Chem Bonded To Faces.  
 4. **BACKS:** 3MM Routed ACM Stapled To Returns. Seal w/ VOC Compliant White Latex Caulk  
 5. **DRAIN HOLES:** 1/4"Ø With Light Cover. (2) Per Letter.

**ELECTRICAL (SIGN TO BE UL LISTED)**  
 6. **LEDS:** Principal True White Qwik Mod 2 Modules  
 7. **WIRE:** Secondary Low Voltage Led Wire  
 8. **PASS THRU:** Paige Wallbuster Or Approved Equal.  
 9. **POWER SUPPLY:** Principal 60 Watt 12VDC Class 2 Power Supply Inside Enclosure.  
 10. **ENCLOSURE:** Paige Box Or Approved Equal  
 11. **PRIMARY:** 1/2" Conduit To Disconnect Switch Secure To Wall w/Straps By Others  
 12. **SERVICE SWITCH:** Located On Side Of Enclosure

**INSTALLATION HARDWARE**  
 Threaded Rod Will Be Provided Standard (1ft Per Mounting Point). Pipe Spacers Provided Standard. All Other Hardware Is to Be Provided By Installer As Required.  
 13. **RIV-NUTS:** 1/4-20. Minimum (3) Per Individual Letter  
 14. **HARDWARE:** Minimum 1/4"Ø Non-corrosive Hardware. Minimum (3) Per Individual Letter. Anti-Crush Spacers As Req'd. Cut To Length In Field

**BUILDING & FASCIA CONDITIONS**  
 15. **WALL SURFACE:** Eifs Over Plywood On Metal Studs.

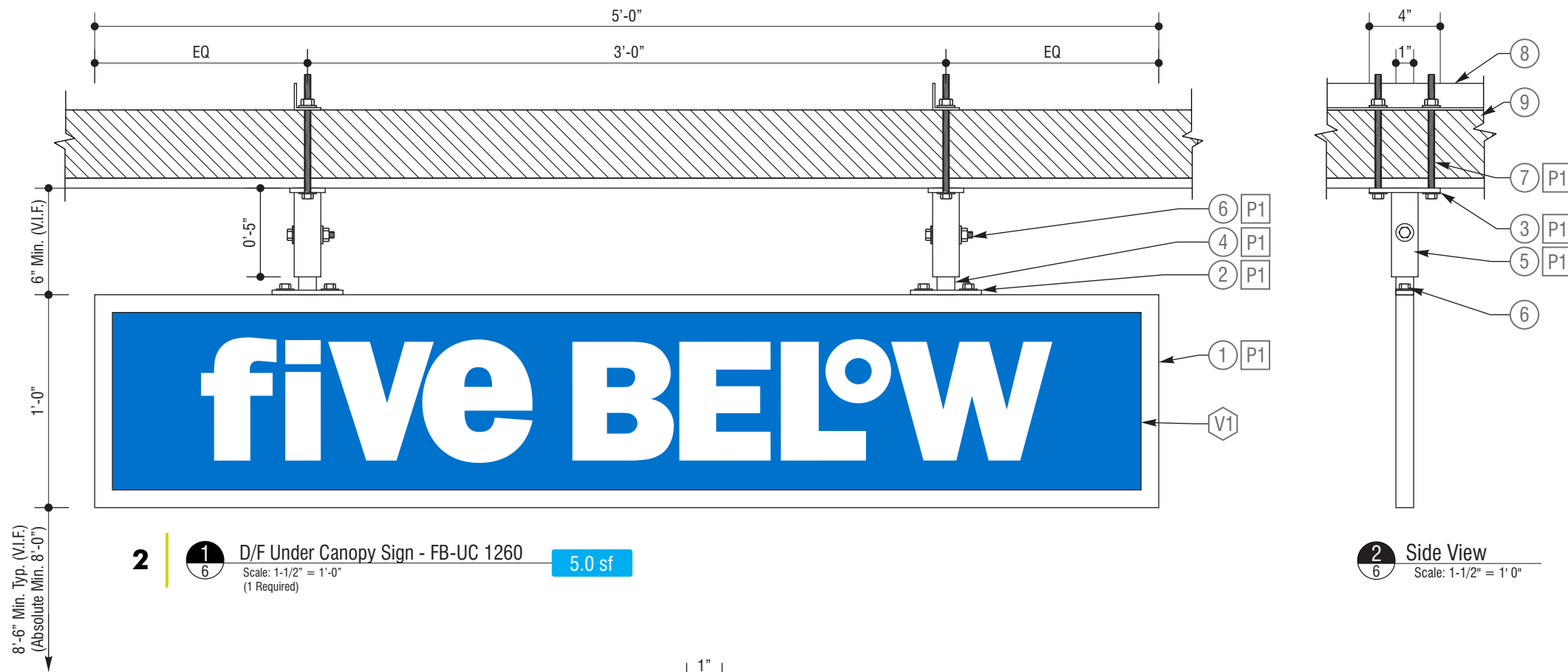
**CHANNEL LETTER INSTALLATION NOTES:**  
 1. Sufficient Primary Dedicated Circuit Within 5' Of Center Of Sign By Others.  
 2. Final Primary Hook-up By Sign Installer Where Allowed By Local Codes.  
 3. All Visible Wiring & Conduit To Be Run In Straight Lines & 90° Bends.  
 4. 15' WHIPS To Be Used For Sign Wiring.  
 5. Seal All Building Penetrations.  
 6. Mounting Hardware By Sign Installer Unless Otherwise Noted.

**Sign Installer Notes:**  
 • To Supply & Utilize appropriate installation hardware to meet actual wall conditions; determined @ survey or time of install.  
 • Complete Final Hookup to Signage, if local code allows & supply is provided @ time of Installation.  
 • All Visible Wiring & Conduit to be Run in Straight Lines & 90° Sweeps.

**General Contractor Note:**  
 • G.C. to provide FR.T. blocking or Sheet metal strapping at signage location as specified by Cima.  
 • G.C. to provide Primary Power Junction Box @ remote location. Verify final location of Junction Box meet the requirements of permanently accessible for service, & within 5'-0" from signage location.  
 • G.C. to provide access hatch for sign wiring.

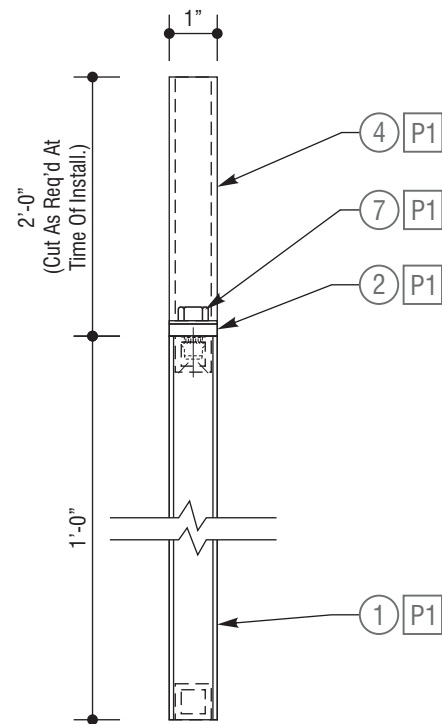
- Survey Notes:**
- Verify roof line location.
  - Verify available wall area for channel letters.
  - Verify electrical access.



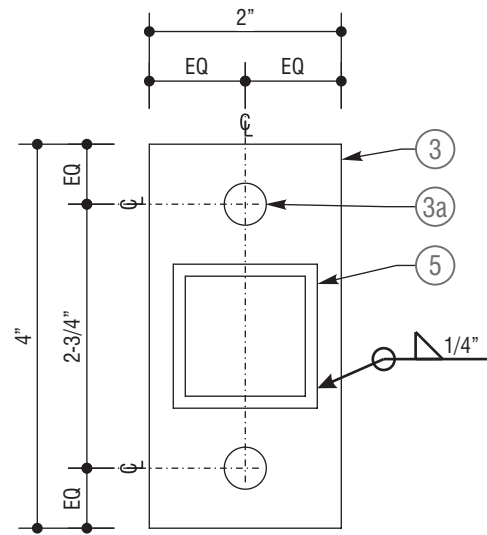


**2** **1** D/F Under Canopy Sign - FB-UC 1260 **5.0 sf**  
 Scale: 1-1/2" = 1'-0"  
 (1 Required)

**2** Side View  
 Scale: 1-1/2" = 1'-0"



**3** Panel Detail - Side View  
 Scale: 3" = 1'-0"



**4** Mounting Plate Detail  
 Scale: Half

**specifications**

Exterior, D/F Non-Illuminated Under Canopy Sign

EST WEIGHT: 25 lbs  
 EST ELECT LOAD: N/A  
 ELECT REQUIREMENTS: N/A

ULTIMATE WIND SPEED: 125 MPH  
 NOMINAL WIND SPEED: 112 MPH  
 RISK CATEGORY: II (3 Sec Peak Gust MPH)  
 WIND IMPORTANCE FACTOR: I= 1  
 WIND EXPOSURE: C

**COLORS & FINISHES**

P1. P1 PANEL & MOUNTING BRACKETS: Satin White  
 V1. V1 VINYL: 1st Surface 3M 3630-167 Bright Blue

**SIGN CONSTRUCTION**

1. **PANEL:** Fabricated Aluminum Painted P1. Faces To Be .090" Aluminum VHB Taped To 3/4" x 3/4" x 1/2" Aluminum Tube Frame. 1/4"Ø Riv Nuts In Top Of Tube Frame For Mounting
2. **PLATE:** 1/4" X 1" X 4" Aluminum Flat Bar Painted P1
3. **PLATE:** 1/4" X 2" X 4" Aluminum Flat Bar Painted P1
- 3a. **HOLES:** 7/16"Ø For 3/8"Ø Hardware
4. **TUBE:** 1/8" x 1" x 1" x 24" Aluminum Painted P1
5. **TUBE:** 1/8" x 1-1/2" x 1-1/2" x 4-3/4" Long Aluminum Painted P1
6. **HARDWARE:** 1/4"Ø Painted P1

**INSTALLATION HARDWARE**

7. **HARDWARE:** 3/8"Ø Non-corrosive Hardware Painted P1. (2) Per Plate
8. **SLEEPER:** 1/8" X 1-1/2" X 1-1/2" Angle Spanning Minimum (2) Structural Members

**BUILDING & FASCIA CONDITIONS**

9. **SOFFIT:** TBD

**Survey Notes:**

- Verify height from soffit to grade.
- Verify depth of soffit.

**Sign Installer Notes:**

- To Supply & Utilize appropriate installation hardware to meet actual wall conditions; determined @ survey or time of install.

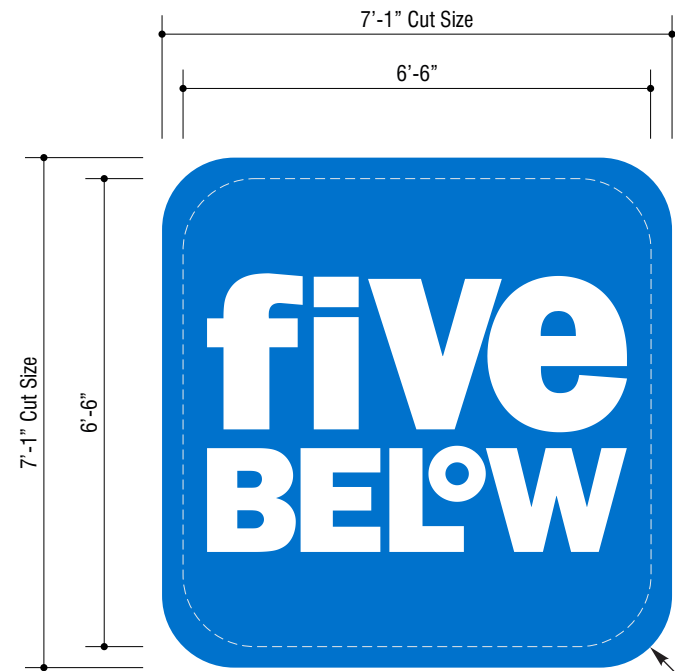
**General Contractor Note:**

- G.C. to provide F.R.T. blocking or Sheet metal strapping at signage location as specified by Cima.

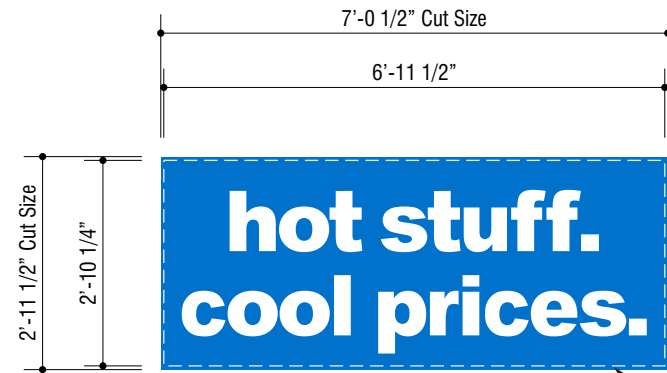


sign 3

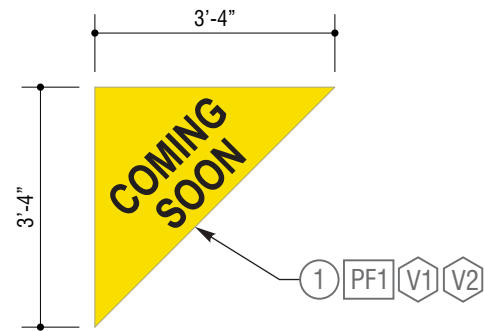
Specified dimensions based on previous Cima survey from Rite Aid Site #03783



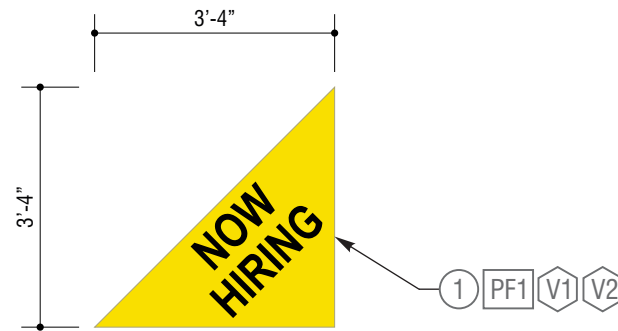
**3.a** | 1 Tenant Reface | 50.2 sf  
Scale: 3/8" = 1'-0"  
(2 Required)



**3.b** | 2 Tenant Reface | 20.8 sf  
Scale: 3/8" = 1'-0"  
(2 Required)



**3.1** | 3 C.S. Temp Graphic - FB-CLING-CMSN | (2 Required)  
Scale: 3/8" = 1'-0"



**3.2** | 4 N.H. Temp Graphic - FB-CLING-HIRE | (2 Required)  
Scale: 3/8" = 1'-0"



reface specifications

Replacement Faces For Tenant Cabinet

COLORS & FINISHES

PF1. FACE: White Translucent 7328  
V1. VINYL: 1st Surface 3M 3630-167 Bright Blue

REFACE CONSTRUCTION

1. **FACE**: .177" Thk Tuffak SL Polycarbonate (Plaskolite) w/1st Surface Vinyl

temp graphic specifications

COLORS & FINISHES

PF1. FILM: Matte White  
V1. VINYL: 3630-22 Black  
V2. VINYL: 3630-15 Yellow

TEMP GRAPHIC CONSTRUCTION

1. **REMOVABLE FILM**: GF Concept 6 Mil. 223 Semi-Rigid Calendared Removable Vinyl  
W/ V1 & V2 Applied On Top 1st Surface

INSTALLATION INSTRUCTIONS

1. Apply To Upper Left Corner Of Face - 2" From Edge Of Face In Each Direction  
2. Apply To Face Before Shipping



**5** Pylon Sign - Proposed Rendering  
Not To Scale