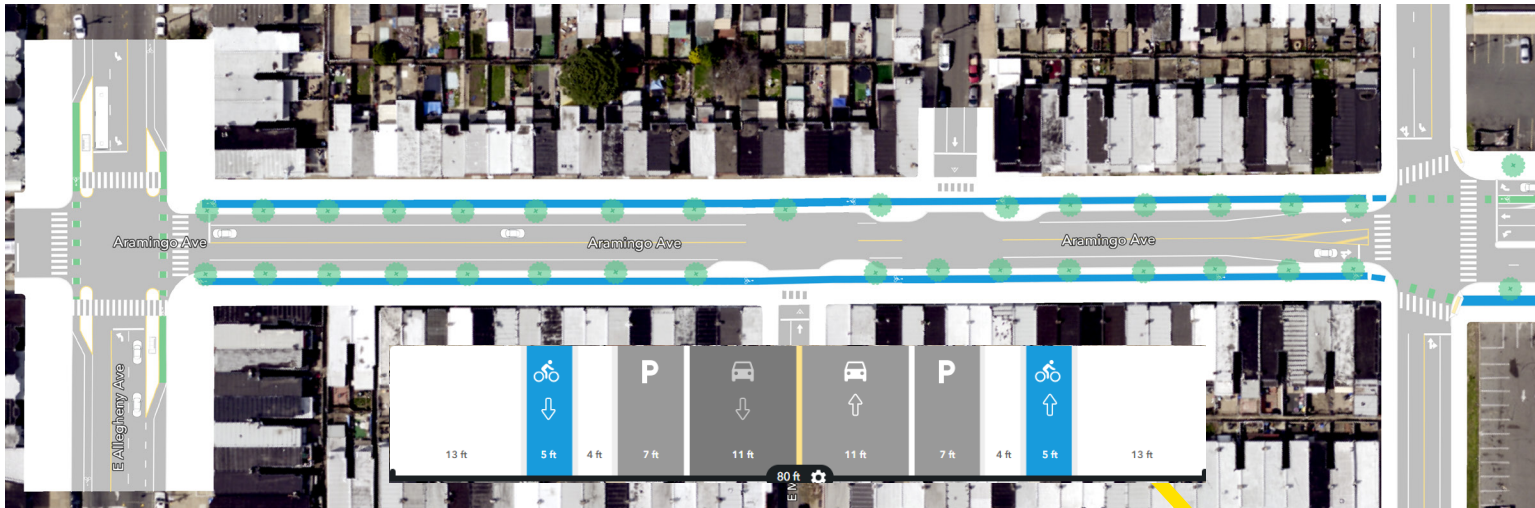


## Expanding the Project to Lehigh



### Possible extension area

In our last discussion with the community, we heard that many people want to see the improvements on Aramingo Avenue go even farther.

We came up with a plan to extend the project all the way to Lehigh Avenue, if funding is available. **The design will be similar to what we've already shown for Aramingo between Allegheny and Westmoreland.**

We would like to know your thoughts! Would you like to see the project extended to Lehigh? Do you like this design?



Please scan the QR code and take the survey to give us feedback.



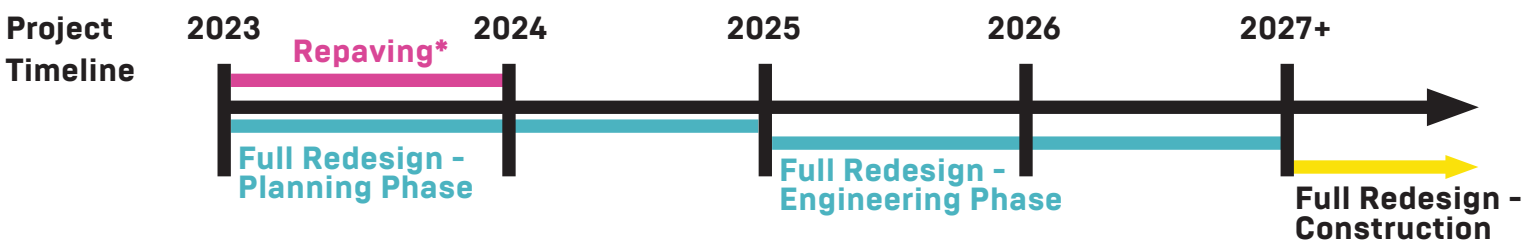
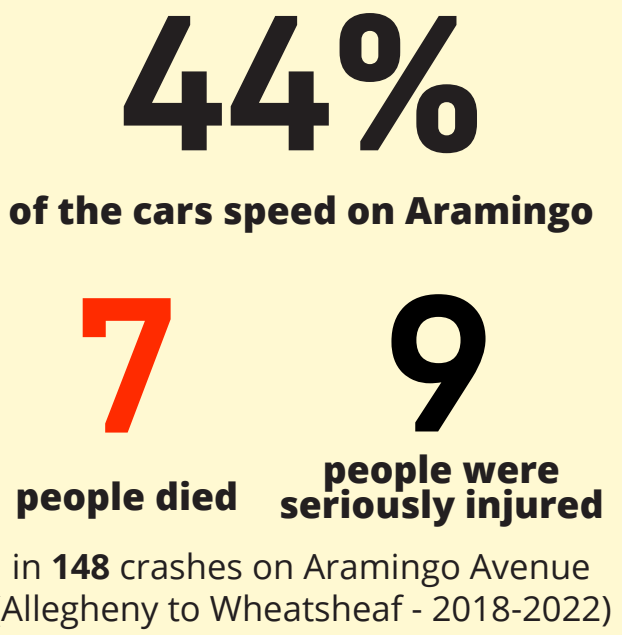
## Aramingo Avenue Safety Project Fact Sheet

### PROJECT OVERVIEW

The Aramingo Avenue Safety project seeks to improve Aramingo Avenue (Allegheny - W heatsheaf). The goals are to:

- Improve safety for all road users
- Expand the high-quality bike network
- Create safe and comfortable bus stops
- Incorporate additional improvements identified by the community

### ARAMINGO AVENUE TODAY



\*Quick-build safety improvements were installed as a part of paving in 2023



# Aramingo Avenue Proposed Improvements



**Raised crosswalks** at side streets to make crossings safer.

**74%** feel unsafe from traffic while traveling on Aramingo Avenue.



66% agree with putting **speed cushions** along the corridor to slow down traffic.

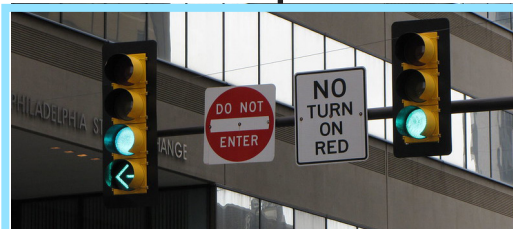
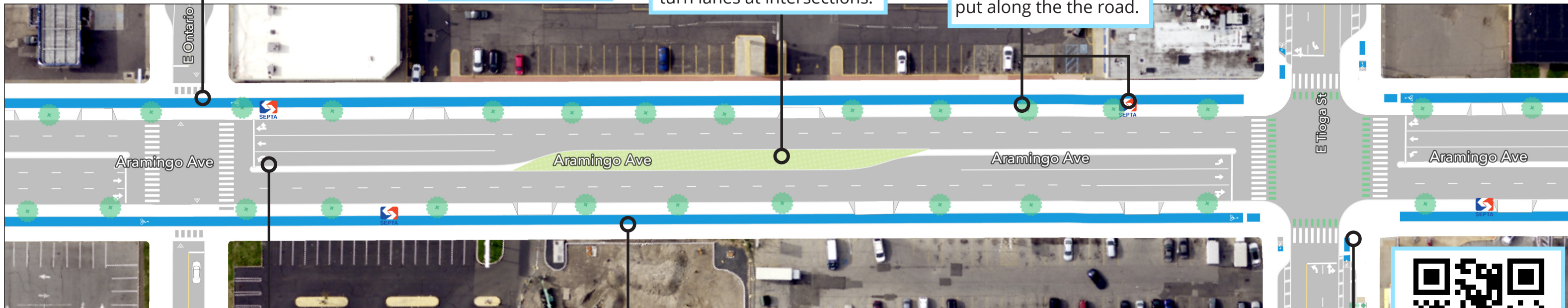


65% support converting center lane to a **traffic median** with left turn lanes at intersections.



Many respondents asked for **street trees and bus shelters** to be put along the the road.

**500+** residents, business and property owners, and people who work along the corridor have participated in our online survey, in-person workshops, and walk audit.

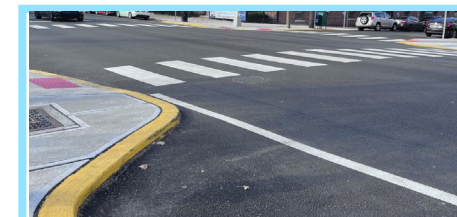


80% of people want **special signals for cars turning left**, to keep turning cars and pedestrians separated.



64% like **bike lanes at sidewalk level**, higher than the road, to give space for bikers.

**61%** would bike or consider biking if there were better bike lanes.



Add **curb extensions** to make crossings shorter and slow down cars turning left.



**Do you like these changes?** Tell us more by scanning the QR code above to complete a 3-minute survey!