

ARAMINGO AVENUE SAFETY PROJECT

| WHAT IS THIS PROJECT?

The Aramingo Avenue Safety Project focuses on the redesign of a Vision Zero high-crash corridor in Philadelphia's Port Richmond and Kensington neighborhoods. This mile-long segment of Aramingo Avenue stretches from Allegheny Avenue to Wheatsheaf Lane.

| PROJECT GOALS



Improve safety for all road users.



Expand the high-quality bike network.



Create safe and comfortable bus stops.



Incorporate additional improvements identified by the community.

| PROJECT TIMELINE & PUBLIC INPUT

Over 500 residents, business and property owners, and people who work along the corridor have participated in public engagement activities so far.

SPRING-SUMMER 2023: DISCOVERY

The City introduced the project to stakeholders and community members through community meetings and gathered feedback on the street through a walk audit.

FALL 2023: DISCUSSION

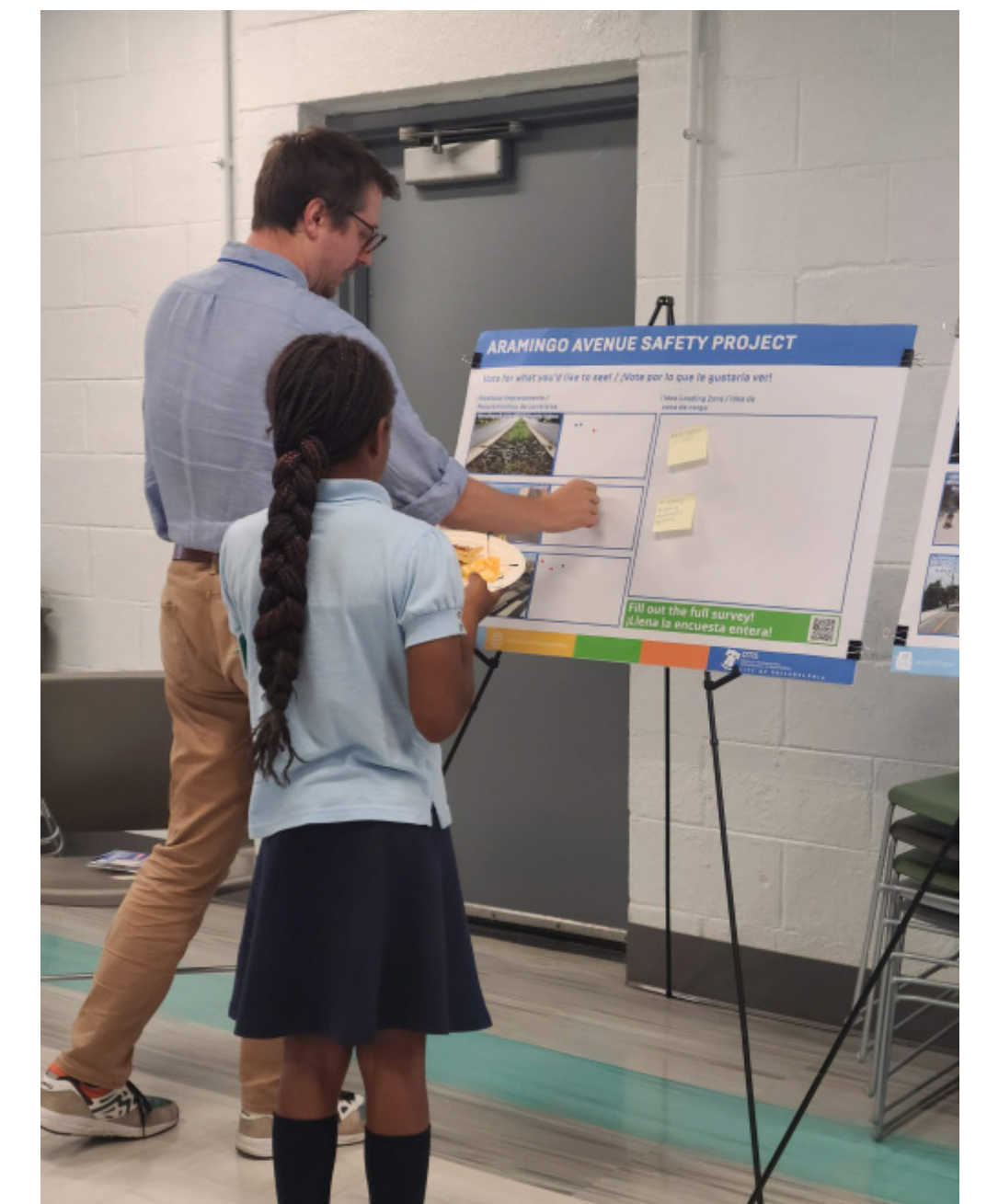
The City shared options for the street with stakeholders and community members through community meetings, an open house, and an online survey.

SPRING 2024: DETERMINATIONS ★

In this current phase, the City will share the draft design to ensure it reflects the input received through community. An online survey is now open for comments.

NEXT STEPS

The City will work on securing funding for implementation from multiple sources and provide project updates as they become available.



otis@phila.gov



tinyurl.com/AramingoSafety



City of Philadelphia

ARAMINGO AVENUE SAFETY PROJECT

| WHAT WE HEARD



74% of survey respondents feel unsafe traveling on Aramingo Avenue.

65% of participants support installing medians on Aramingo Avenue.

Many said they felt unsafe due to speeding and dangerous driving.

80% are unsatisfied with the current walking conditions.

People who walk, bike, or take transit requested dedicated left turn signals for vehicles and curb extensions.

"Crossing on foot is terrifying as it's far too wide and exposed."



"Aramingo absolutely NEEDS center medians!! So many [crashes] occur from people trying to cross two lanes of traffic to make a left turn. And so many [crashes] from people flying down the center lane."



The lack of bus shelters are a concern for people who walk, bike, and take transit on Aramingo Avenue.



For people who only walk, bike, and ride the bus, bus shelters and more places to sit were the highest requested amenities.

"I will avoid bus routes because I literally feel like I will die waiting for the bus by Aramingo."



Residents are very supportive of enhanced bike lanes along Aramingo Avenue.

61% of participants would bike or consider biking on Aramingo Avenue if the biking infrastructure were in place.

Sidewalk-level bike lanes were preferred by the majority of people who participated (65%).

More than half of those who would consider biking identified that they mostly drive now.



"No one bikes on Aramingo Avenue because it's not safe."

"I would LOVE to bike, especially to get to connection to the Delaware River Bike trails with my kid, but it is TERRIFYING to bike down Aramingo. I have only done it 1-2 times because of fear of getting hit."



Many indicated concerns about quality of life issues and maintenance of the street.



Participants requested more lighting, trees and greenery, and more regular maintenance and cleaning of Aramingo Avenue.

"Trees would be nice to add! Shaded areas, things to help reduce the heat."



otis@phila.gov



tinyurl.com/AramingoSafety

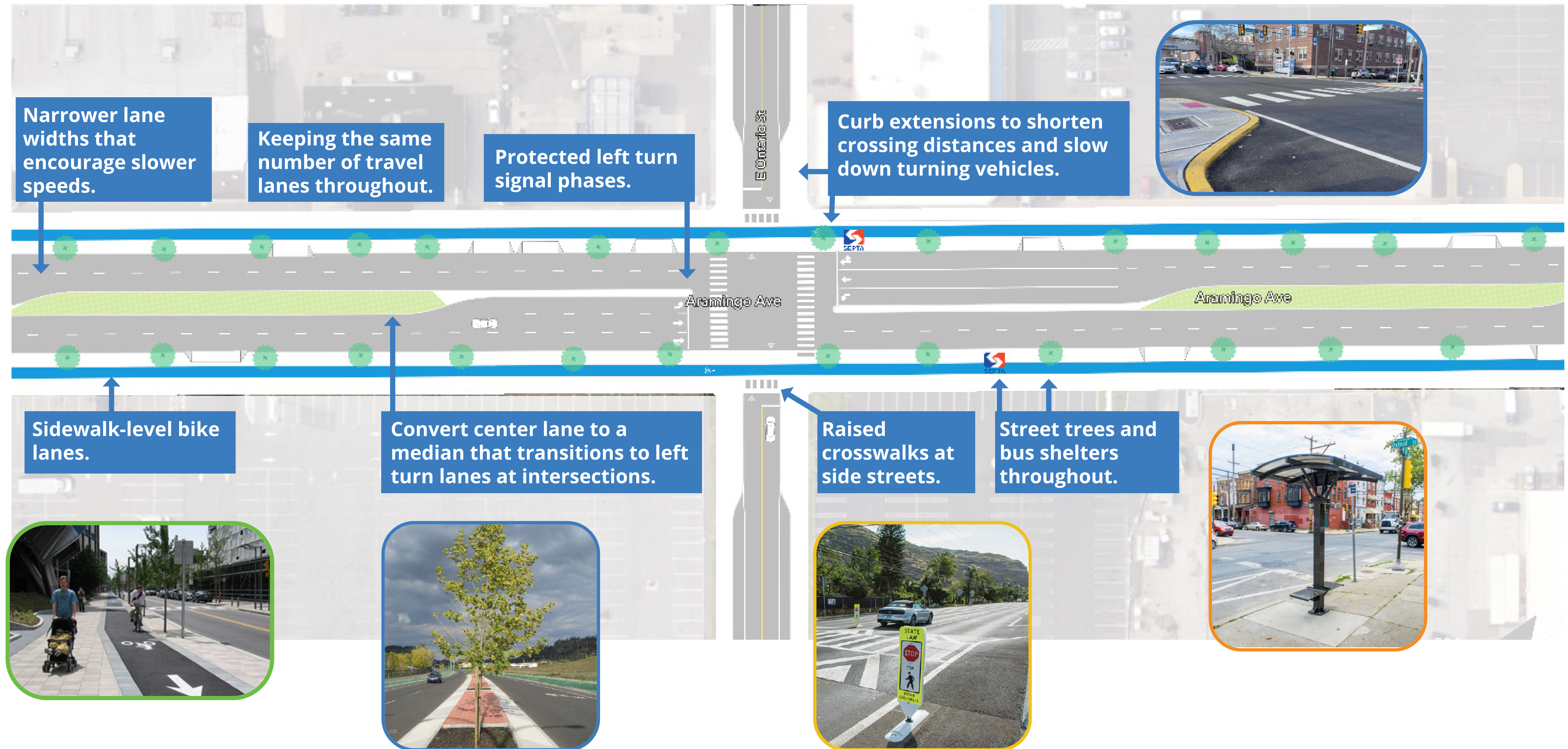


City of Philadelphia

ARAMINGO AVENUE SAFETY PROJECT

| PROPOSED ROADWAY CHANGES

Based on community feedback, these are the corridor improvements proposed for further design. This segment at the intersection of Ontario Street represents what most of Aramingo Avenue would look like after construction.



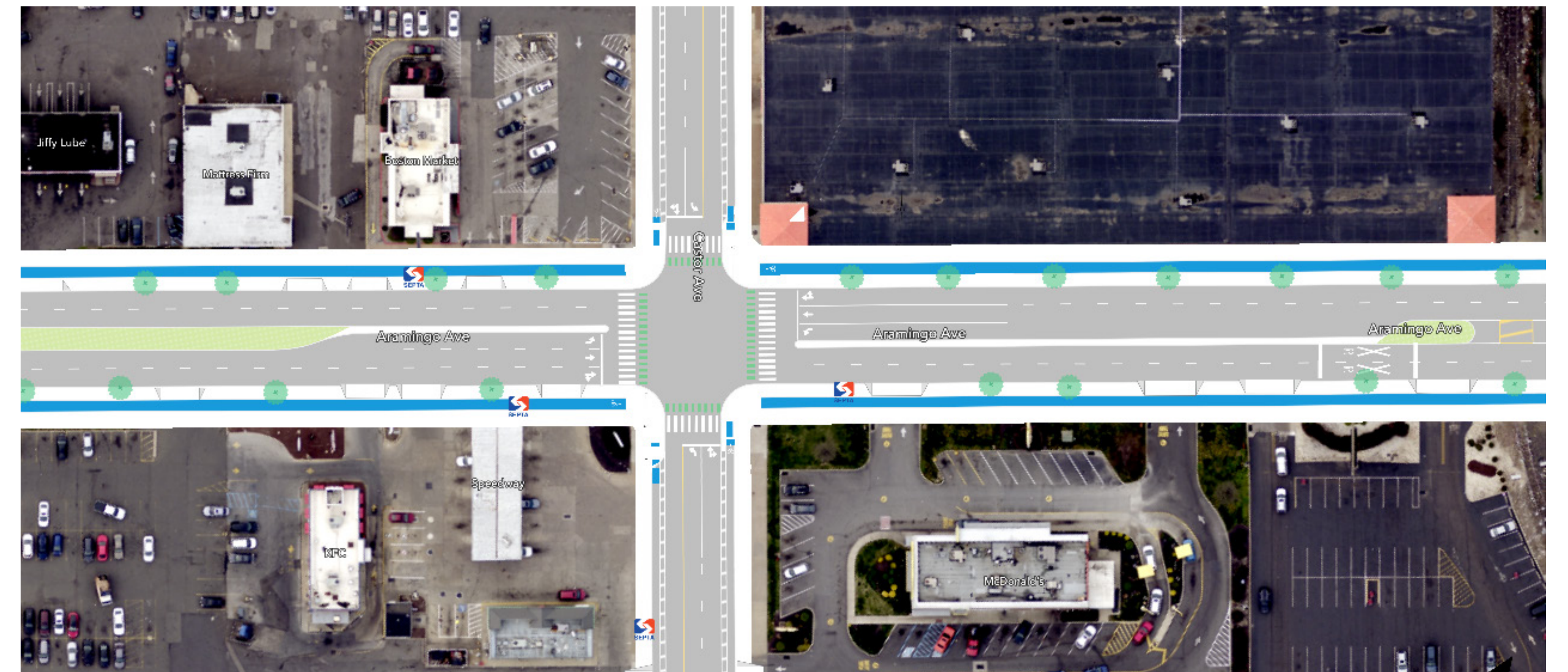
ARAMINGO AVENUE SAFETY PROJECT

| PROPOSED ROADWAY CHANGES

ARAMINGO AVENUE AT BUTLER STREET



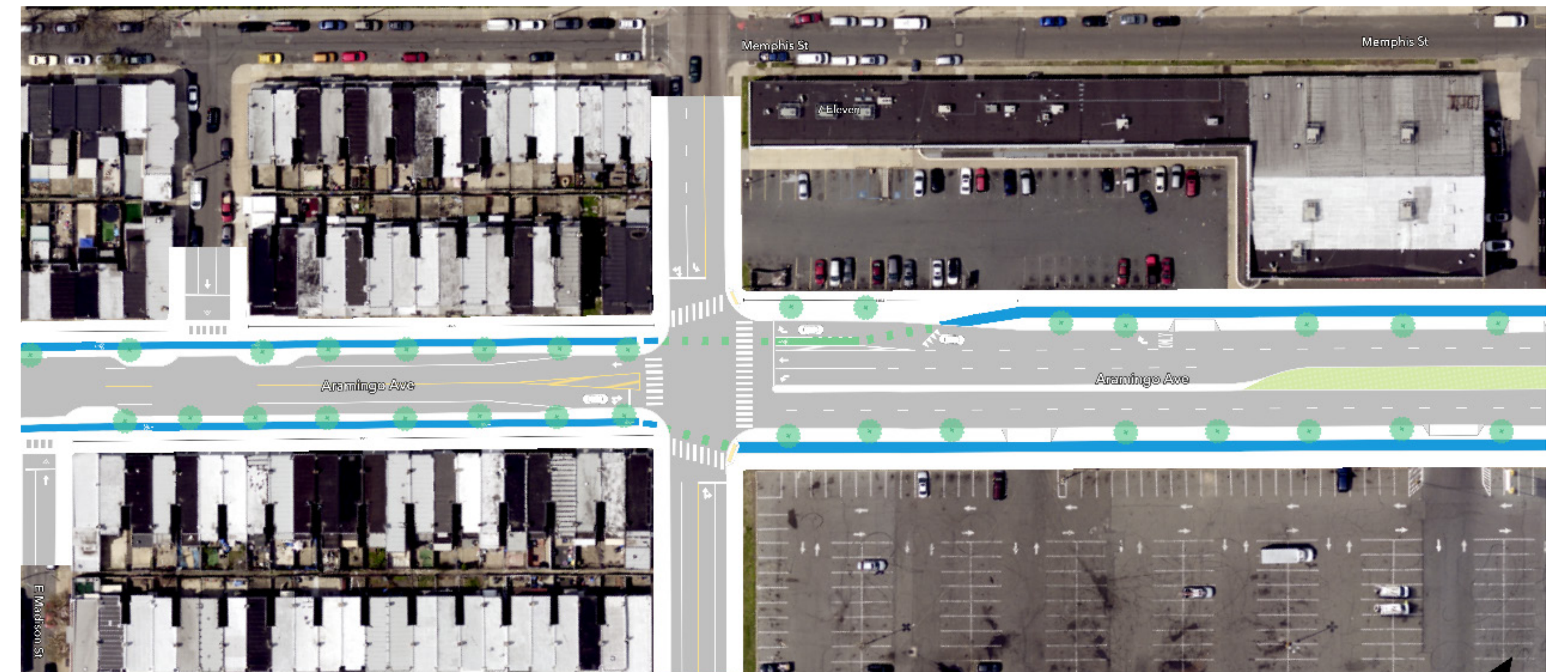
ARAMINGO AVENUE AT CASTOR AVENUE



ARAMINGO AVENUE AT TIOGA STREET

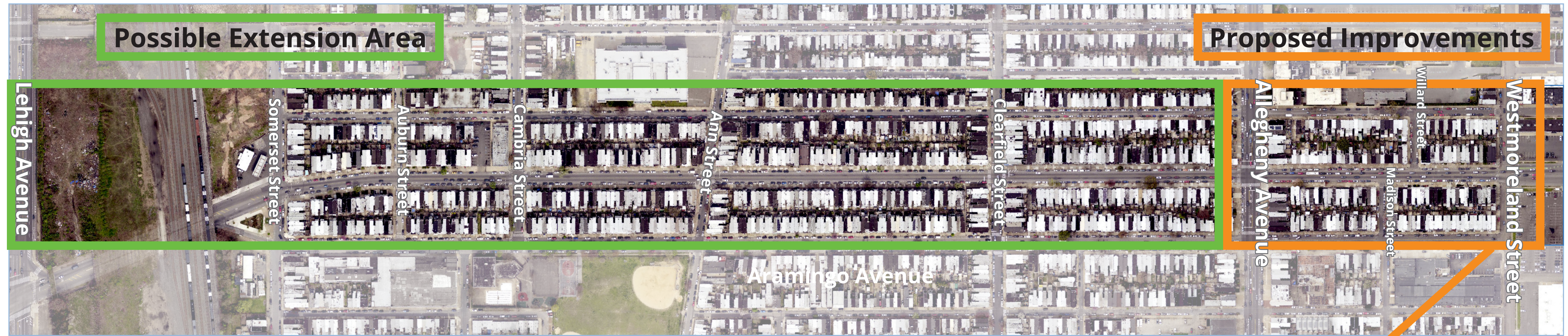


ARAMINGO AVENUE AT WESTMORELAND STREET



ARAMINGO AVENUE SAFETY PROJECT

POSSIBLE EXTENSION FROM LEHIGH AVENUE TO ALLEGHENY AVENUE



In our last discussion with the community, we heard that many people want to see the improvements on Aramingo Avenue go even farther.

We came up with a plan to extend the project all the way to Lehigh Avenue, if funding is available. The design will be similar to what we've already shown for Aramingo between Allegheny and Westmoreland.

We would like to know your thoughts! Would you like to see the project extended to Lehigh? Do you like this design?

Please take the survey to provide your feedback.

ALLEGHENY AVENUE TO WESTMORELAND STREET



otis@phila.gov



tinyurl.com/AramingoSafety



City of
Philadelphia