



Corporate Headquarters  
207 Senate Avenue  
Camp Hill, PA 17011  
P 717.763.7211 | F 717.763.8150

[gannettfleming.com](http://gannettfleming.com)

October 24, 2023

To: Philadelphia Art Commission  
1515 Arch Street  
13<sup>th</sup> Floor  
Philadelphia, PA 19102

Re: SEPTA 34<sup>th</sup> Street Station ADA Improvements Project Cover Letter

Dear Members of the Art Commission:

Gannett Fleming has been contracted by SEPTA to provide design and construction related services for the installation of a new street level elevator and stair head houses at 34<sup>th</sup> Street Station as part of their effort to improve ADA accessibility across their system.

SEPTA's 34<sup>th</sup> Street Station, which was constructed in the early 1950's, is located at the intersection of 34<sup>th</sup> and Market Streets in the University City neighborhood of West Philadelphia. Entrances to the below ground station are currently provided at each of the four corners of the site and are highlighted by original decorative railings which surround the station entrances. These railings were recently designated as being historically significant by the Philadelphia Historical Commission in 2018. Through coordination with the Philadelphia Historical Commission, SEPTA intends to restore and maintain these railings while constructing a permanent protective covering over the entrances at the northeast, southeast, and southwest corners. In addition, a new street level to mezzanine level elevator is proposed for the southeast corner of the site, with its location being set immediately east of the existing southeast stair entrance. This corner of the site was chosen for the new elevator with input from representatives of neighboring Drexel University and is based on the high level of visibility to the public, generous amount of open sidewalk space, and having far less impacts on existing utilities as compared to the other three corners.

The implementation of the stair entrance coverings at this site is largely being driven by the need to protect the stair entrances from the surrounding elements in order to increase pedestrian safety and security. The concept being carried forward for these stair enclosures is based on the design of a similar improvements project involving historic railings which is currently in development at SEPTA's 19<sup>th</sup> Street Trolley Station. Primary objectives for the design include durability, ease of maintenance, pedestrian safety, and the need to adhere to the Historical Commission's requirements to minimize any visibility impacts to the existing railings. To meet these needs, the materials selected for these structures consists of concrete curbs with stone veneer, stainless steel frames, standing seam metal roofs, and a series of low-profile horizontal cables to help secure the enclosure. Materials for the street level elevator head house design have similarly been chosen out of consideration for durability, ease of



maintenance, pedestrian safety, and limiting the elevator’s visual impact on the existing streetscape. Following similar examples at SEPTA’s Tasker Morris and Spring Garden Stations on the Broad Street Line, the project intends to implement a stainless-steel structural frame with a mixture of glass block and storefront glazing infill. The anticipated height of the structure is 15’-6”, which is the direct result of the mechanical requirements of the hydraulic style elevator.

As required, we will forward to you by next Wednesday 11/1, the supporting materials for the project, including color photographs of the existing conditions, site plans, and three-dimensional renderings of the proposed construction. The project is currently anticipated to be funded with a grant issued through the partnership between SEPTA and the City of Philadelphia. As part of the project SEPTA intends to incorporate an Art-in-Transit program, which will be managed by SEPTA.

We would like to be placed on the agenda for the next meeting of the Art Commission, currently scheduled for November 8<sup>th</sup>. Please feel free to contact me with any questions about the project at (717) 329-4035 or by email at [jludzinski@gfnet.com](mailto:jludzinski@gfnet.com). Additionally, please include Will Kunkle, SEPTA Project Manager and Timothy Yiu, Project Architect on any official correspondence. Contact information for both individuals has been provided below.

Very truly yours,

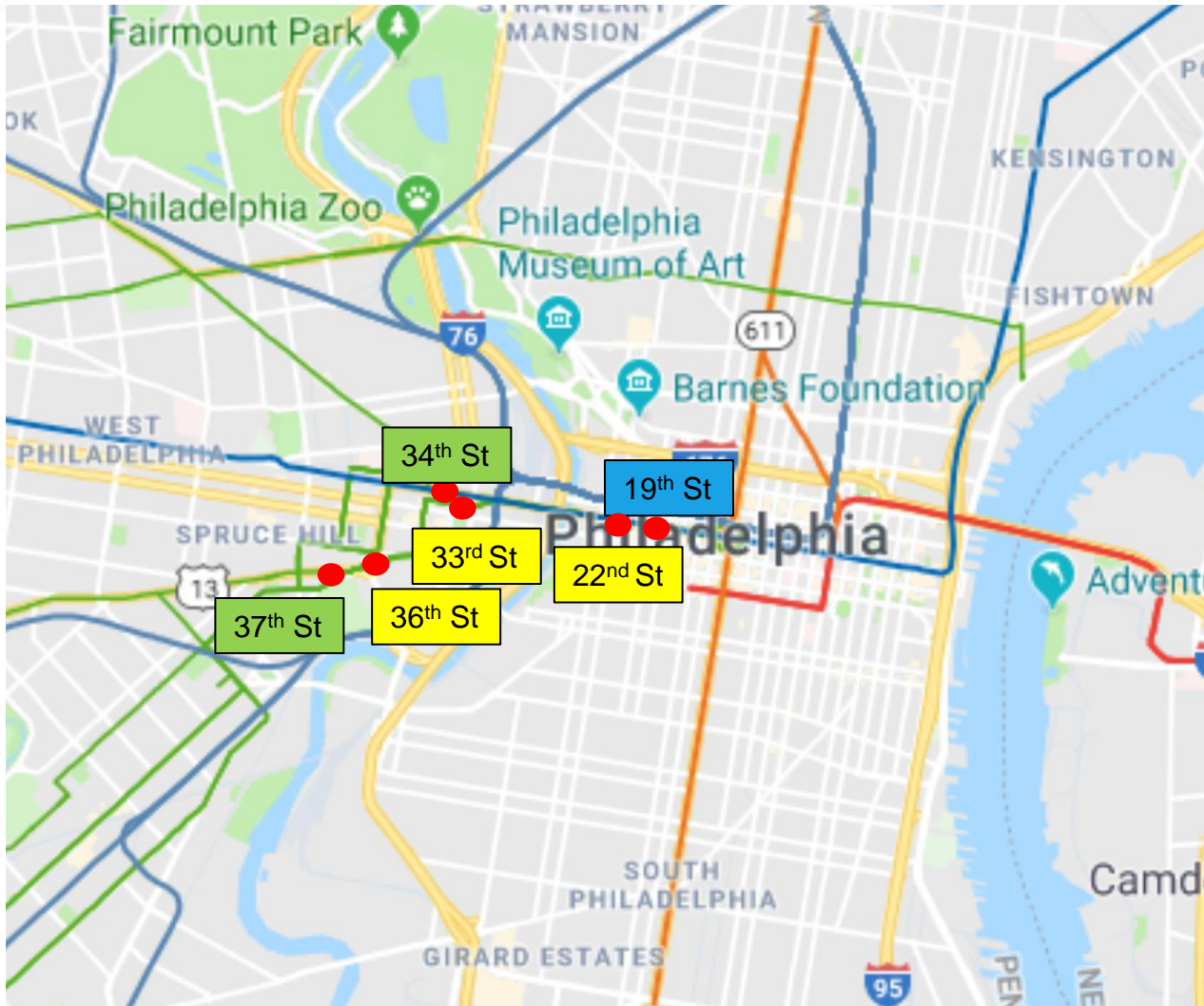
**GANNETT FLEMING, INC.**




A handwritten signature in black ink, appearing to read "John C. Lydzinski".

John C. Lydzinski, P.E.  
Project Manager

cc: Will Kunkle, SEPTA ([wkunkle@septa.org](mailto:wkunkle@septa.org))  
Timothy Yiu, Gannett Fleming ([tyiu@gfnet.com](mailto:tyiu@gfnet.com))

# SEPTA's Projects



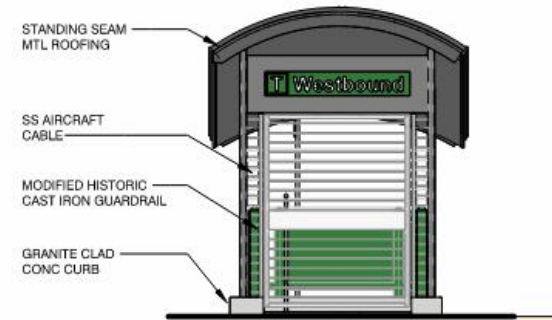
-  Previously Approved
-  Presenting Today
-  Future Submission

Under a Future Separate Request:  
Logan  
Wyoming  
Hunting Park  
Fairmount  
Chinatown  
Lombard-South  
Ellsworth-Federal  
Snyder

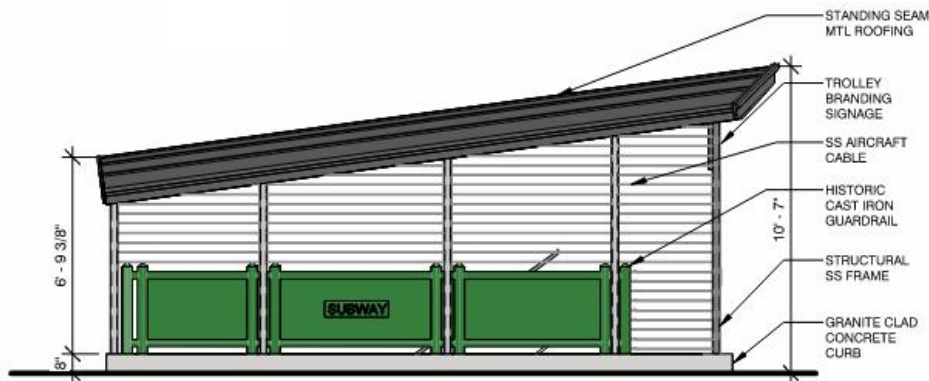




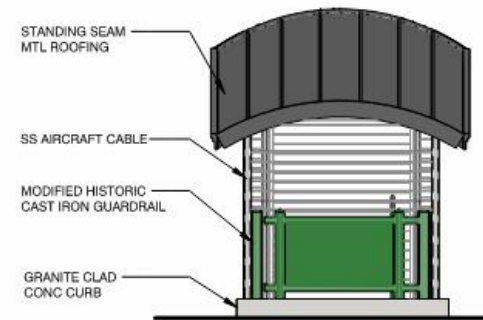
① WESTBOUND STAIR HEADHOUSE MASSING



② WESTBOUND STAIR FRONT ELEVATION  
1/4" = 1'-0"

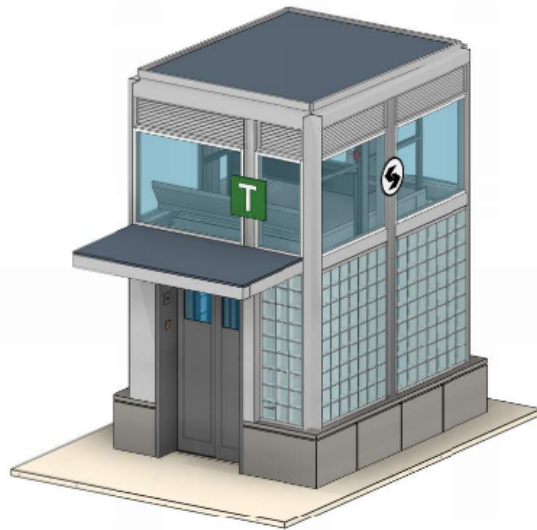


③ WESTBOUND STAIR - SOUTH ELEVATION  
1/4" = 1'-0"

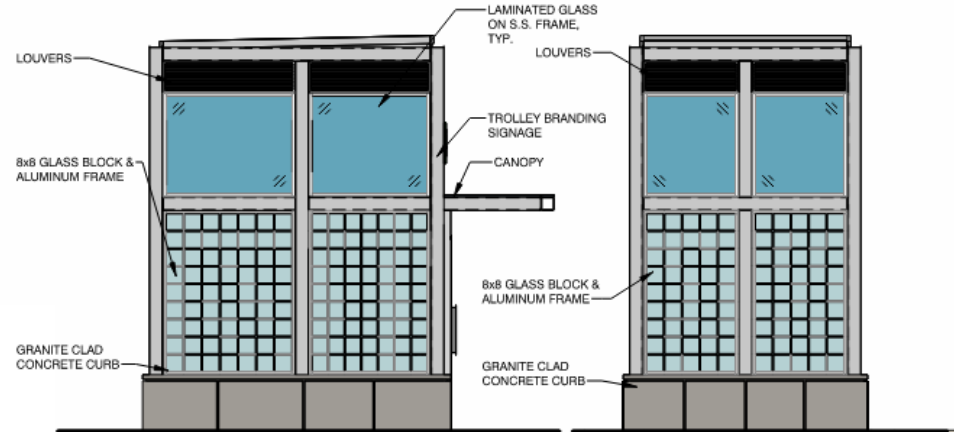


④ WESTBOUND STAIR - REAR ELEVATION  
1/4" = 1'-0"

# Template Design

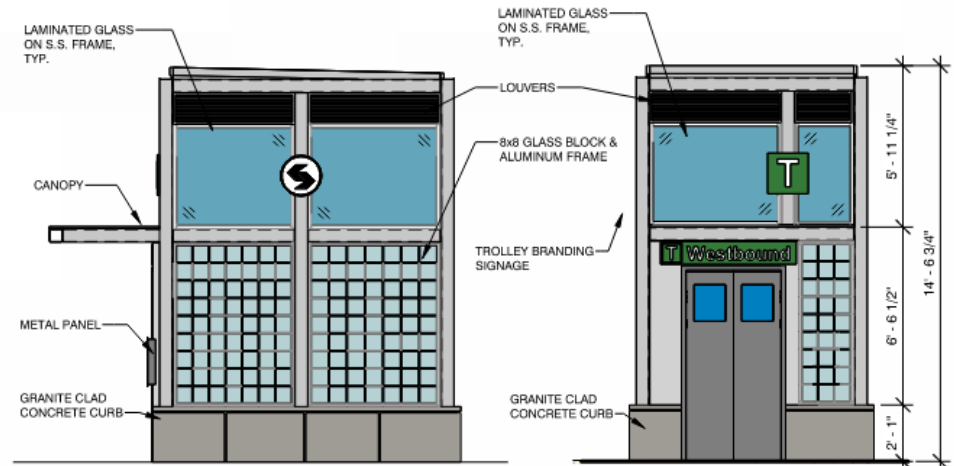


① NW ELEVATOR HEADHOUSE MASSING



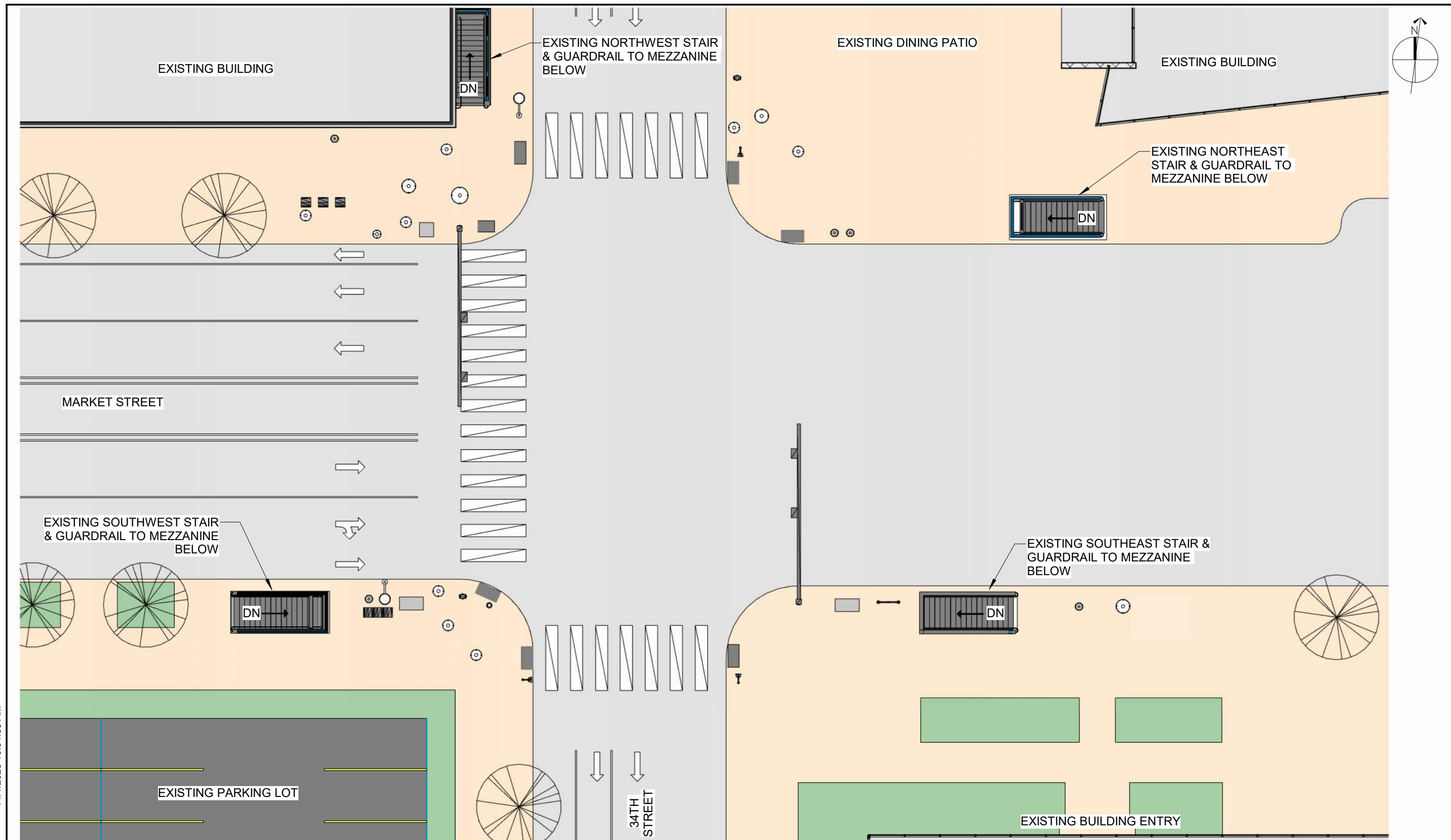
② NW ELEVATOR - SOUTH ELEVATION  
1/4" = 1'-0"

④ NW ELEVATOR - WEST ELEVATION  
1/4" = 1'-0"



③ NW ELEVATOR - NORTH ELEVATION  
1/4" = 1'-0"

⑤ NW ELEVATOR - EAST ELEVATION  
1/4" = 1'-0"



11/1/2023 10:34:58 AM

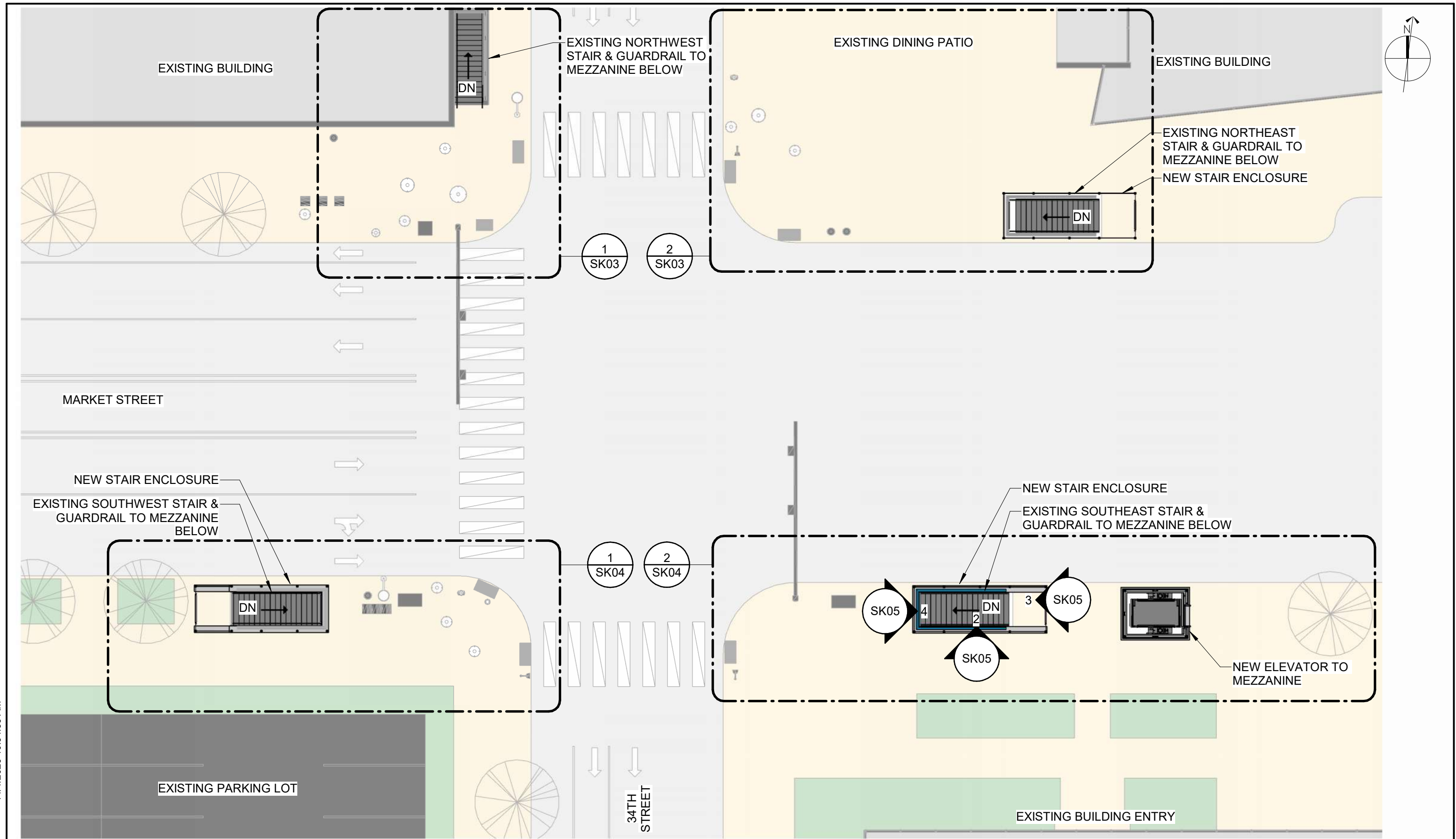
**1** **EXISTING STREET LEVEL**  
SK01 SCALE: 1/16" = 1'-0"

**GANNETT FLEMING**  
1801 Market Street, Suite 2600  
Philadelphia, PA 19103

EXISTING OVERALL STREET LEVEL  
**SEPTA ADA IMPROVEMENTS**  
34TH STREET STATION  
MARKET FRANKFORD LINE  
ART COMMISSION

DESIGNED BY: MA  
DRAWN BY: NAF  
CHECKED BY: TY  
APPROVED BY: JCL  
SCALE: 1/16" = 1'-0"  
PROJECT NO.

ISSUE DATE:  
10/31/2023  
SHEET NUMBER:  
**SK01**  
OF 99



11/1/2023 10:34:58 AM

**1** **PROPOSED STREET LEVEL**  
 SCALE: 1/16" = 1'-0"

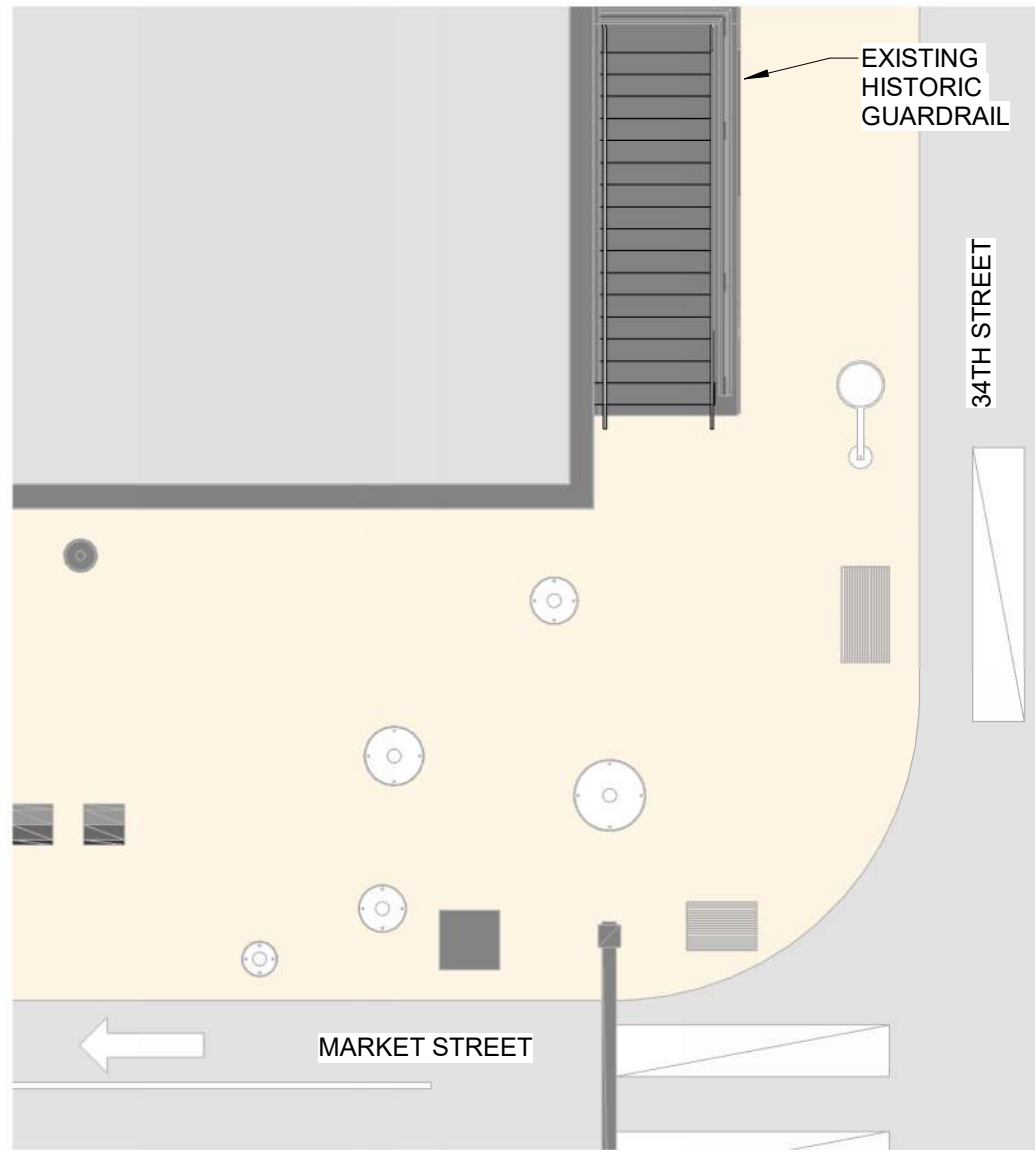
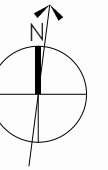
**GANNETT FLEMING**  
 1801 Market Street, Suite 2600  
 Philadelphia, PA 19103

PROPOSED OVERALL STREET LEVEL  
 SEPTA ADA IMPROVEMENTS  
 34TH STREET STATION  
 MARKET FRANKFORD LINE  
 ART COMMISSION

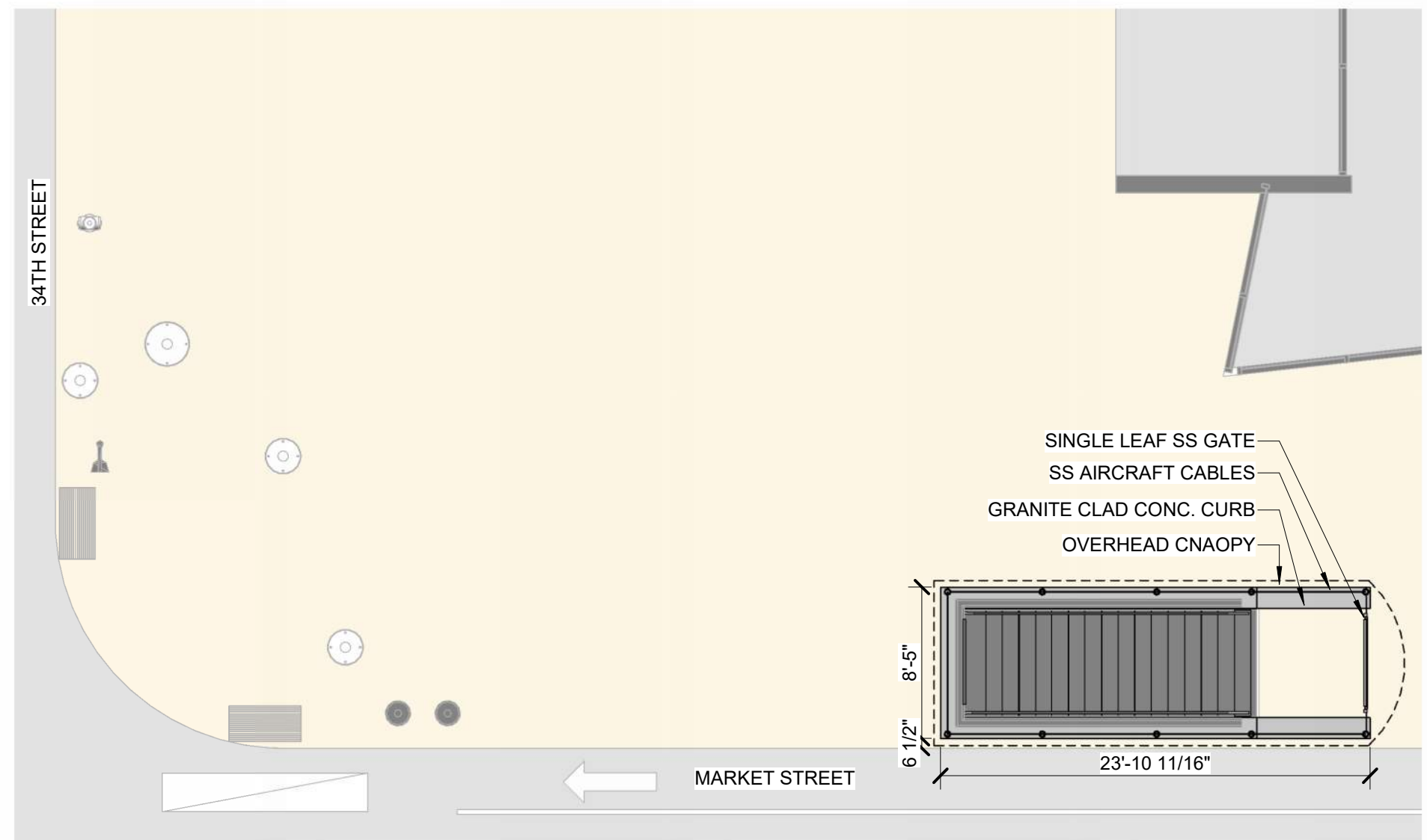
DESIGNED BY: MA  
 DRAWN BY: NAF  
 CHECKED BY: TY  
 APPROVED BY: JCL  
 SCALE: 1/16" = 1'-0"  
 PROJECT NO.

ISSUE DATE:  
 10/31/2023  
 SHEET NUMBER:  
**SK02**  
 OF 99





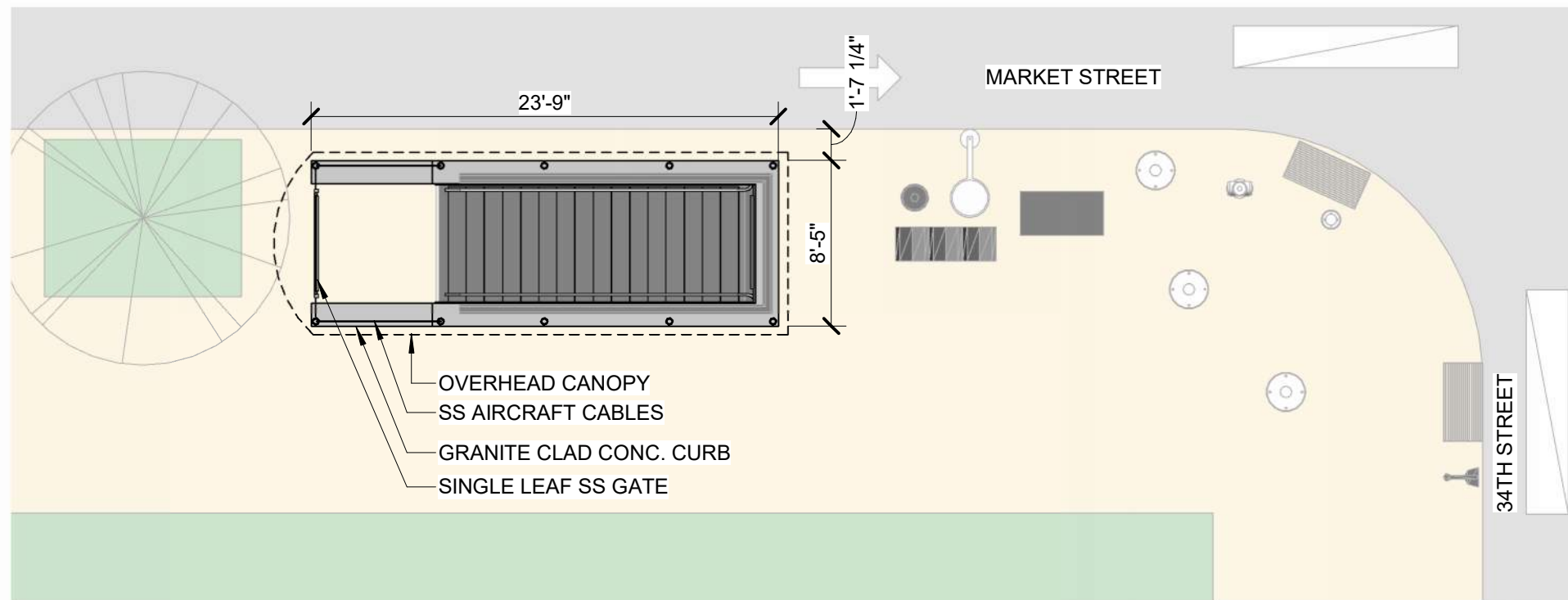
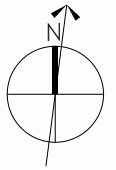
**1** **NORTHWEST CORNER**  
 SK03 SCALE: 1/8" = 1'-0"



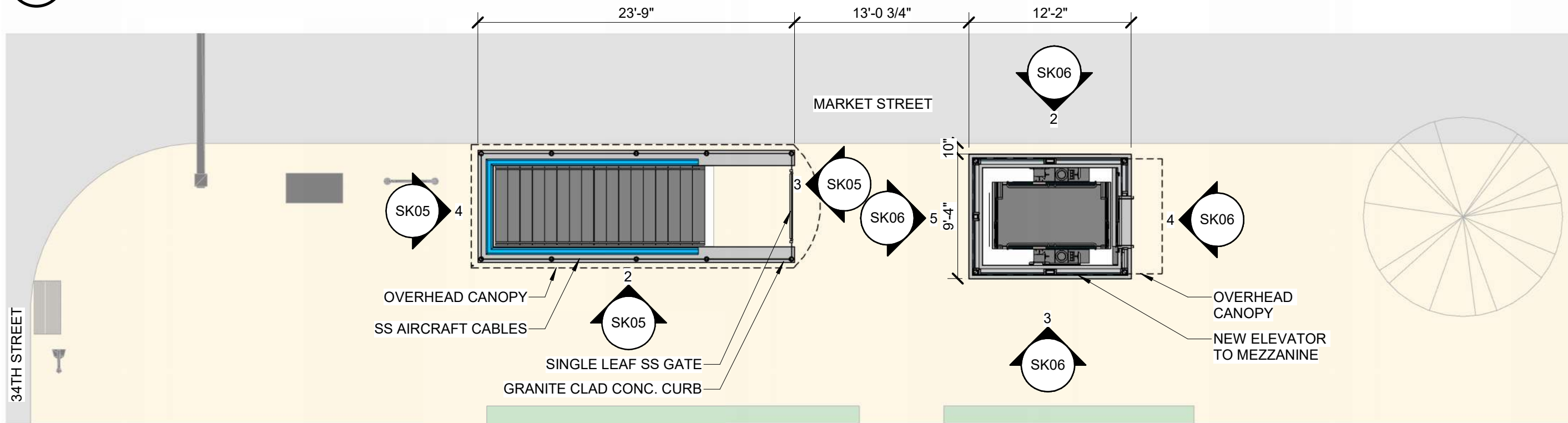
**2** **NORTHEAST CORNER**  
 SK03 SCALE: 1/8" = 1'-0"

11/1/2023 10:34:59 AM

 1801 Market Street, Suite 2600 Philadelphia, PA 19103	PROPOSED ENLARGED CORNERS I SEPTA ADA IMPROVEMENTS 34TH STREET STATION MARKET FRANKFORD LINE ART COMMISSION	DESIGNED BY: MA DRAWN BY: NAF CHECKED BY: TY APPROVED BY: JCL SCALE: 1/8" = 1'-0" PROJECT NO.	ISSUE DATE: 10/31/2023 SHEET NUMBER: <b>SK03</b> OF 99



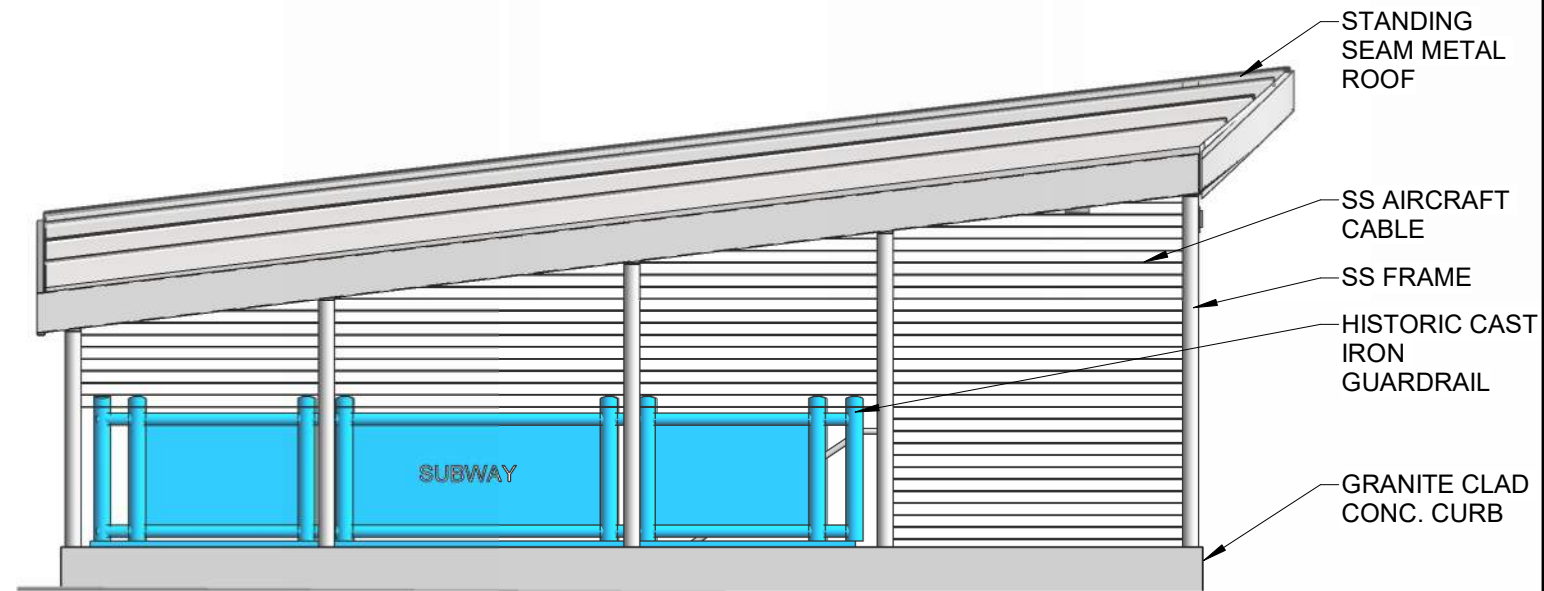
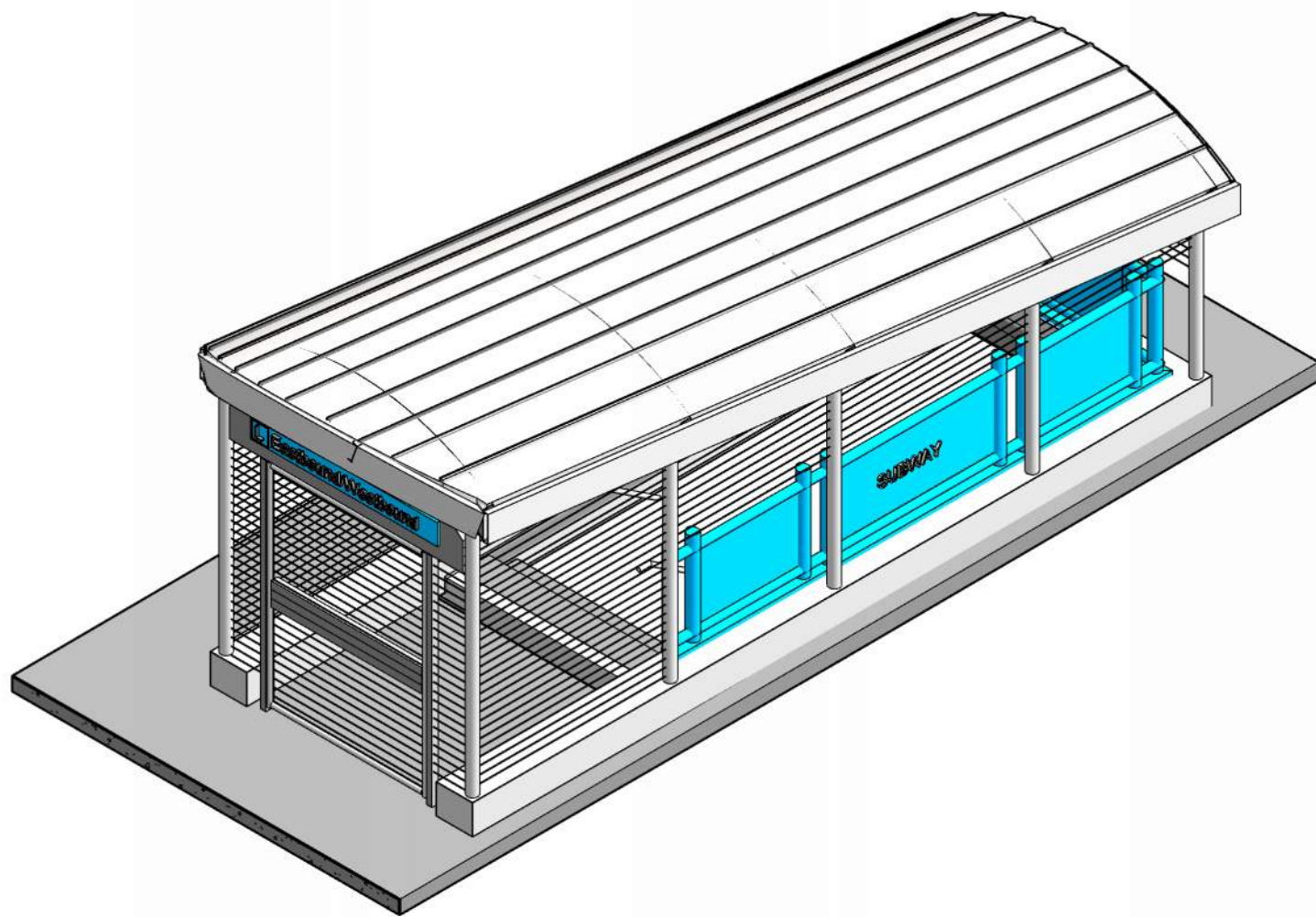
**1** **SOUTHWEST CORNER**  
 SK04 SCALE: 1/8" = 1'-0"



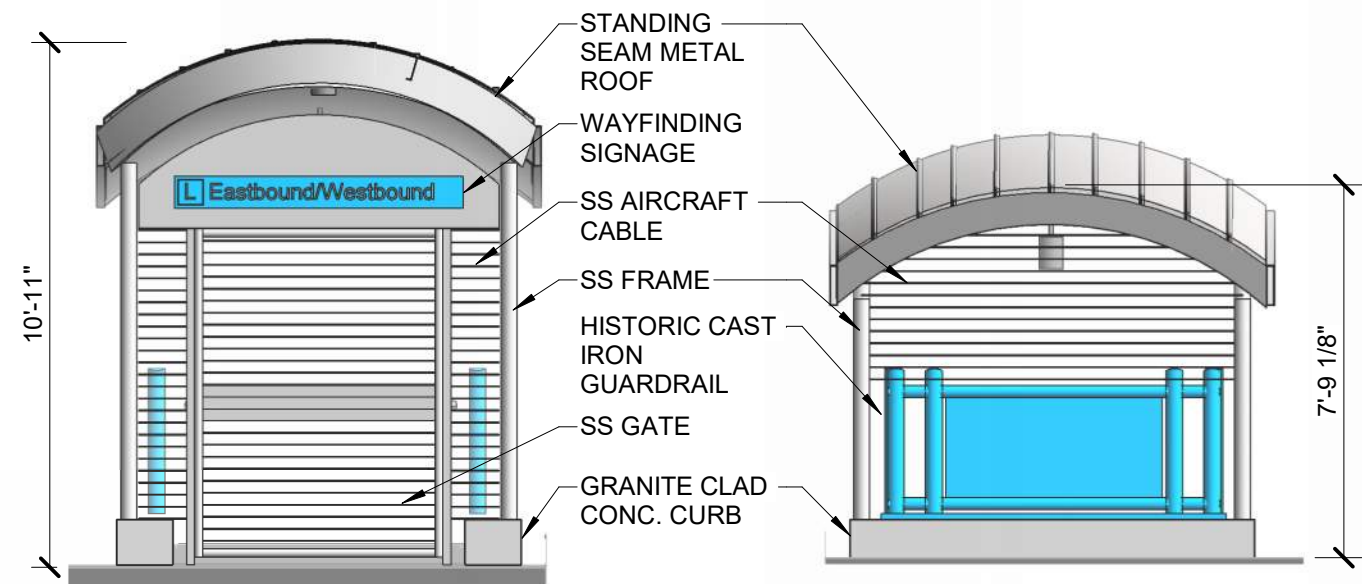
**2** **SOUTHEAST CORNER**  
 SK04 SCALE: 1/8" = 1'-0"

11/1/2023 10:35:00 AM

 1801 Market Street, Suite 2600 Philadelphia, PA 19103	PROPOSED ENLARGED CORNERS II SEPTA ADA IMPROVEMENTS 34TH STREET STATION MARKET FRANKFORD LINE ART COMMISSION	DESIGNED BY: MA DRAWN BY: NAF CHECKED BY: TY APPROVED BY: JCL SCALE: 1/8" = 1'-0" PROJECT NO.	ISSUE DATE: 10/31/2023 SHEET NUMBER: <b>SK04</b> OF 99



**2 STAIR - SOUTH ELEVATION**  
 SK05 SCALE: 1/4" = 1'-0"



**3 STAIR - EAST ELEVATION**  
 SK05 SCALE: 1/4" = 1'-0"

**4 STAIR - WEST ELEVATION**  
 SK05 SCALE: 1/4" = 1'-0"

**1 STAIR - 3D MASSING**  
 SK05 SCALE: NTS

11/1/2023 10:35:01 AM

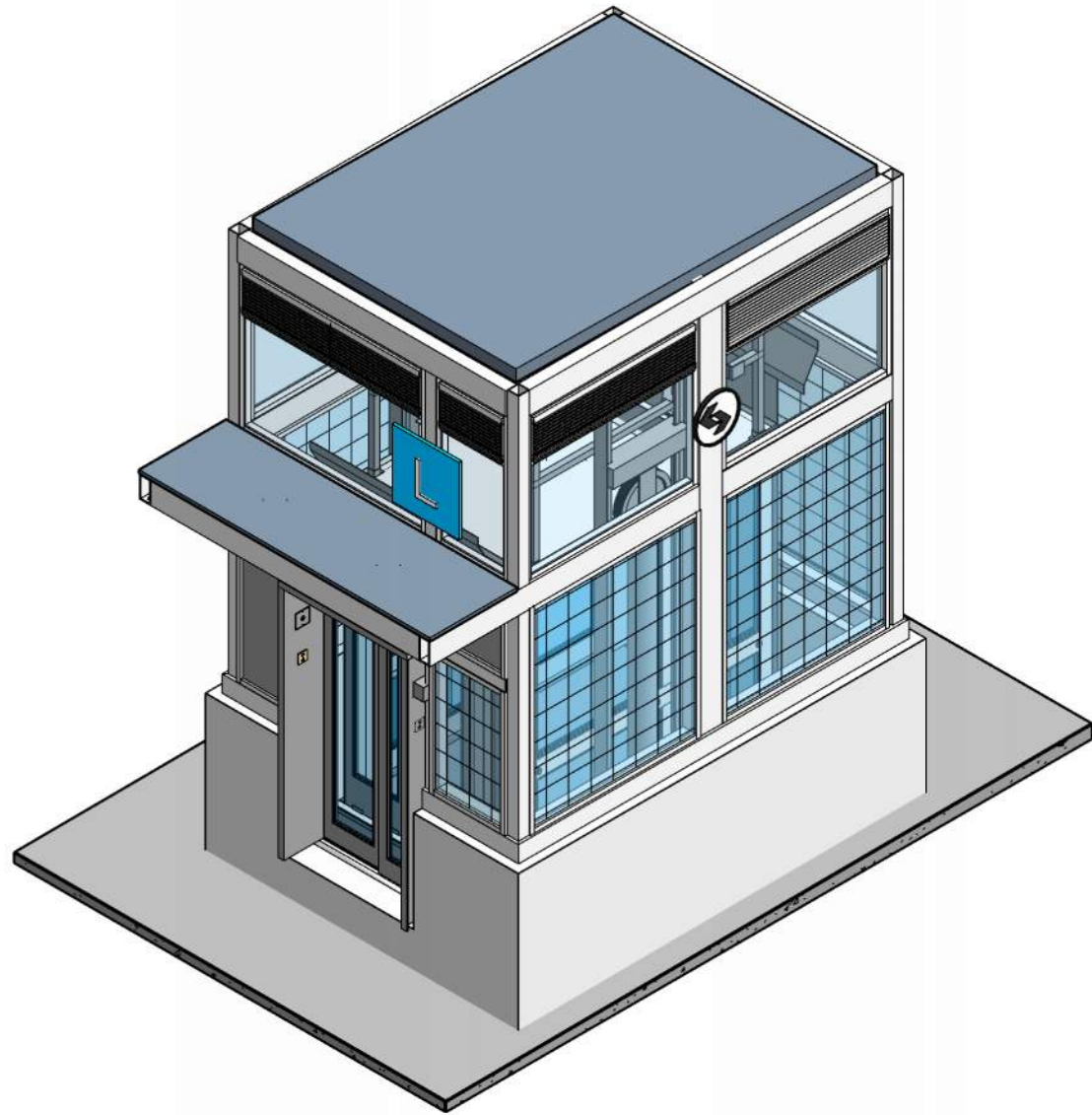


1801 Market Street, Suite 2600  
 Philadelphia, PA 19103

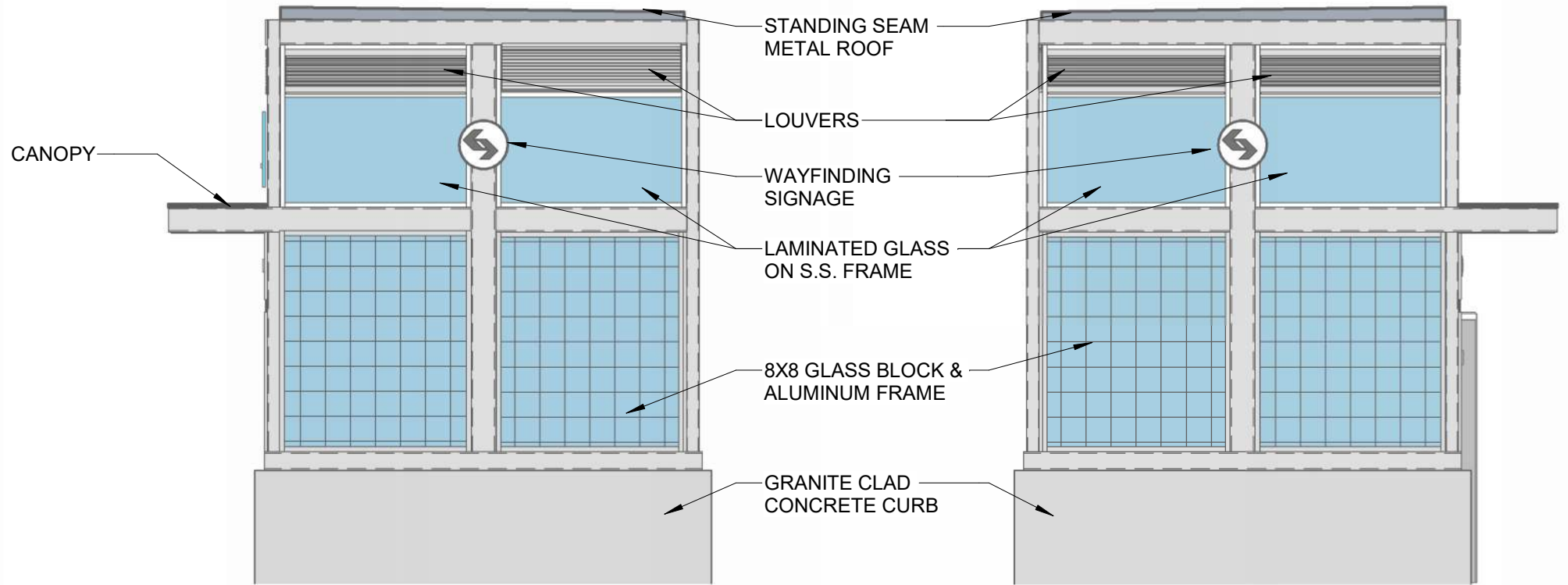
PROPOSED STAIR HEADHOUSE  
 SEPTA ADA IMPROVEMENTS  
 34TH STREET STATION  
 MARKET FRANKFORD LINE  
 ART COMMISSION

DESIGNED BY: MA  
 DRAWN BY: NAF  
 CHECKED BY: TY  
 APPROVED BY: JCL  
 SCALE: 1/4" = 1'-0"  
 PROJECT NO.

ISSUE DATE:  
 10/31/2023  
 SHEET NUMBER:  
**SK05**  
 OF 99

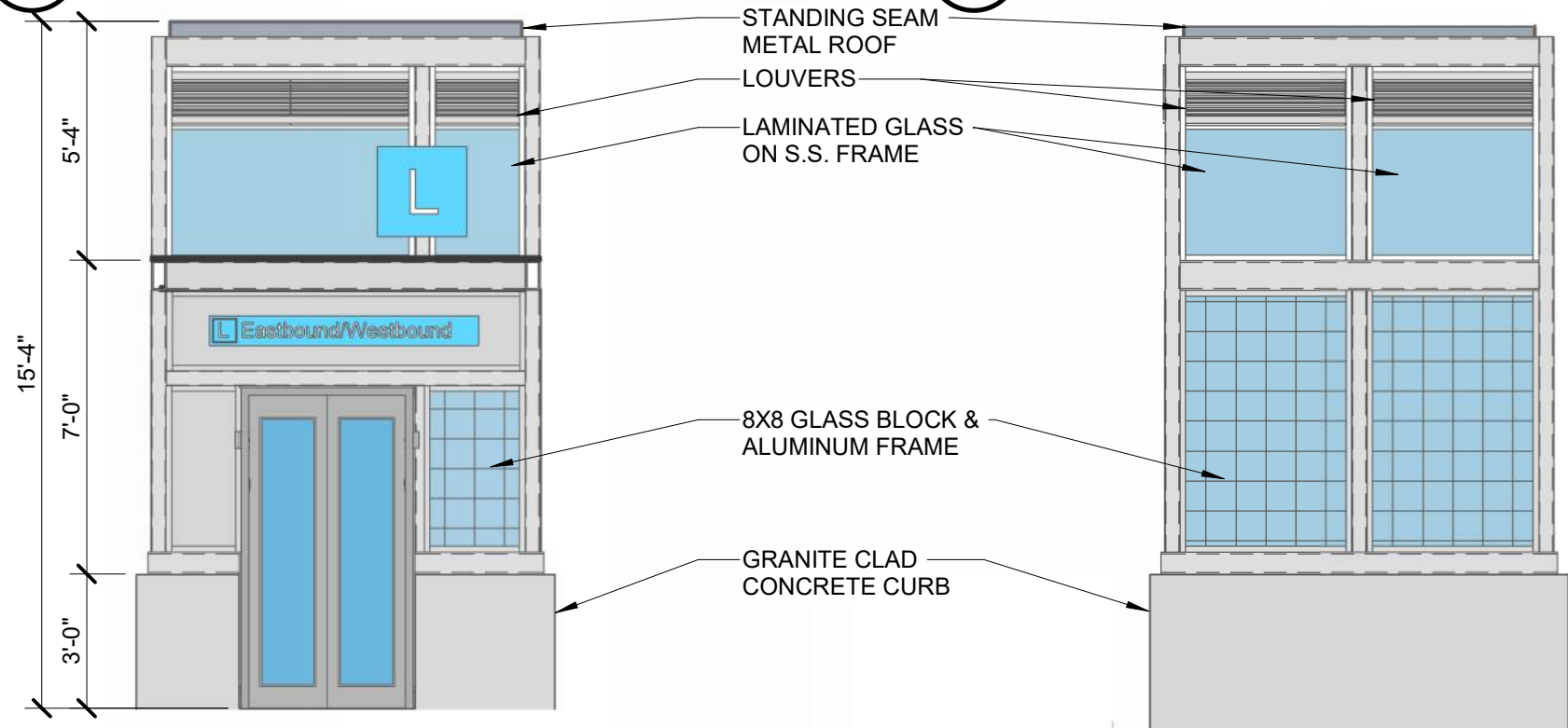


**1 ELEVATOR - 3D MASSING**  
 SK06 SCALE: NTS



**2 ELEVATOR - NORTH ELEVATION**  
 SK06 SCALE: 1/4" = 1'-0"

**3 ELEVATOR - SOUTH ELEVATION**  
 SK06 SCALE: 1/4" = 1'-0"



**4 ELEVATOR - EAST ELEVATION**  
 SK06 SCALE: 1/4" = 1'-0"

**5 ELEVATOR - WEST ELEVATION**  
 SK06 SCALE: 1/4" = 1'-0"

11/1/2023 10:35:02 AM

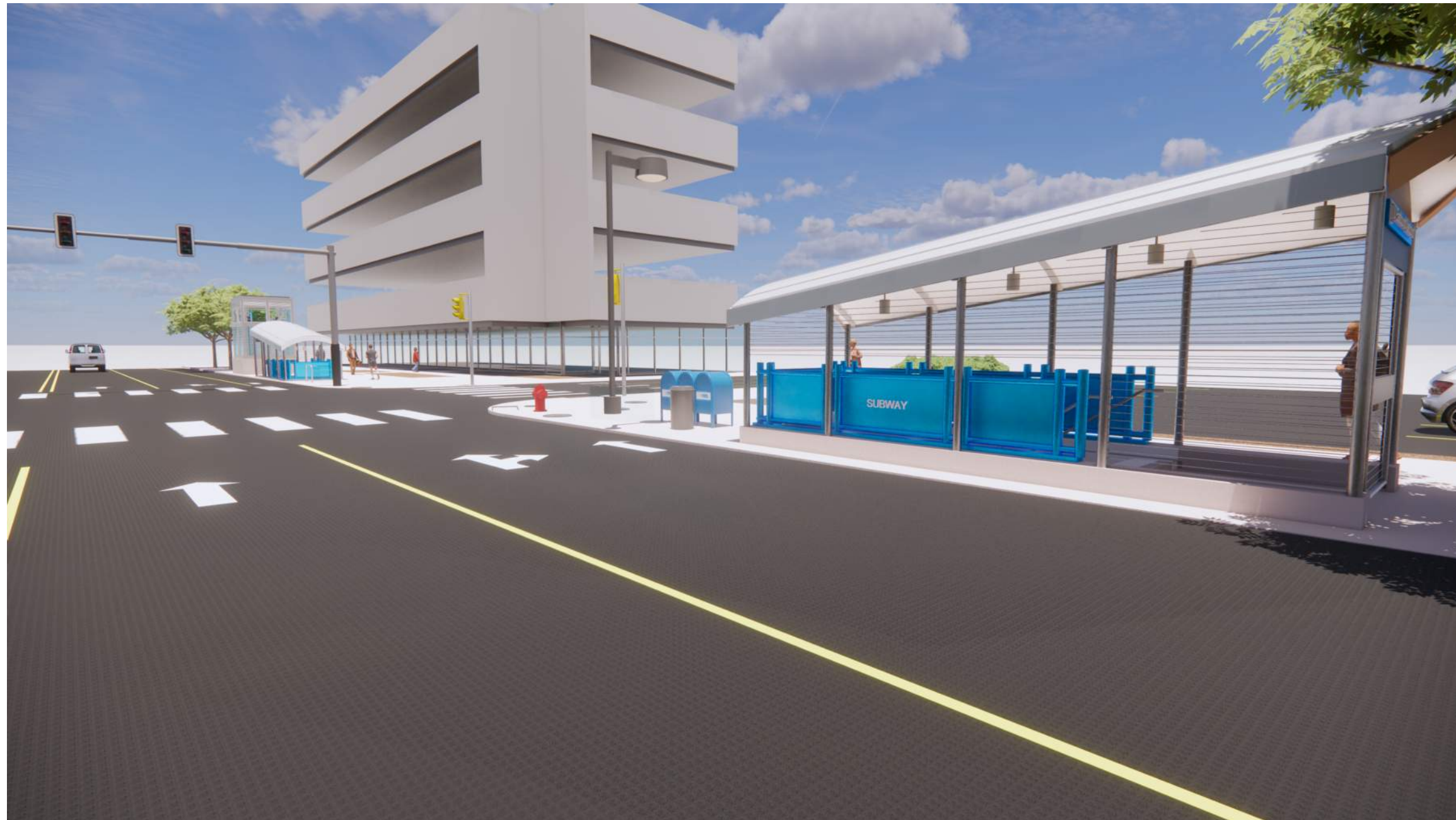


1801 Market Street, Suite 2600  
 Philadelphia, PA 19103

PROPOSED ELEVATOR HEADHOUSE  
 SEPTA ADA IMPROVEMENTS  
 34TH STREET STATION  
 MARKET FRANKFORD LINE  
 ART COMMISSION

DESIGNED BY: MA  
 DRAWN BY: NAF  
 CHECKED BY: TY  
 APPROVED BY: JCL  
 SCALE: 1/4" = 1'-0"  
 PROJECT NO.

ISSUE DATE:  
 10/31/2023  
 SHEET NUMBER:  
**SK06**  
 OF 99



**VIEW OF SOUTHWEST CORNER LOOKING SOUTHEAST DURING DAY**

11/1/2023 10:35:03 AM



1801 Market Street, Suite 2600  
Philadelphia, PA 19103

PROPOSED 3D VIEW  
SEPTA ADA IMPROVEMENTS  
34TH STREET STATION  
MARKET FRANKFORD LINE  
ART COMMISSION

DESIGNED BY: MA  
DRAWN BY: NAF  
CHECKED BY: TY  
APPROVED BY: JCL  
SCALE: NTS  
PROJECT NO.

ISSUE DATE:  
10/31/2023  
SHEET NUMBER:  
**SK07**  
OF 99



**VIEW OF SOUTHWEST CORNER LOOKING NORTHEAST AT EVENING**

11/1/2023 10:35:02 AM



1801 Market Street, Suite 2600  
Philadelphia, PA 19103

PROPOSED 3D VIEW  
SEPTA ADA IMPROVEMENTS  
34TH STREET STATION  
MARKET FRANKFORD LINE  
ART COMMISSION

DESIGNED BY: MA  
DRAWN BY: NAF  
CHECKED BY: TY  
APPROVED BY: JCL  
SCALE: NTS  
PROJECT NO.

ISSUE DATE:  
10/31/2023  
SHEET NUMBER:  
**SK08**  
OF 99



**VIEW OF SOUTHEAST CORNER LOOKING SOUTHEAST DURING DAY**

11/1/2023 10:35:07 AM



1801 Market Street, Suite 2600  
Philadelphia, PA 19103

PROPOSED 3D VIEW  
SEPTA ADA IMPROVEMENTS  
34TH STREET STATION  
MARKET FRANKFORD LINE  
ART COMMISSION

DESIGNED BY: MA  
DRAWN BY: NAF  
CHECKED BY: TY  
APPROVED BY: JCL  
SCALE: NTS  
PROJECT NO.

ISSUE DATE:  
10/31/2023  
SHEET NUMBER:  
**SK09**  
OF 99



**VIEW OF SOUTHEAST CORNER LOOKING NORTHWEST AT NIGHT**

11/1/2023 10:35:03 AM



1801 Market Street, Suite 2600  
Philadelphia, PA 19103

PROPOSED 3D VIEW  
SEPTA ADA IMPROVEMENTS  
34TH STREET STATION  
MARKET FRANKFORD LINE  
ART COMMISSION

DESIGNED BY: MA  
DRAWN BY: NAF  
CHECKED BY: TY  
APPROVED BY: JCL  
SCALE: NTS  
PROJECT NO.

ISSUE DATE:  
10/31/2023  
SHEET NUMBER:  
**SK10**  
OF 99





**VIEW OF NORTHEAST CORNER LOOKING NORTHWEST DURING DAY**

11/1/2023 10:35:07 AM



1801 Market Street, Suite 2600  
Philadelphia, PA 19103

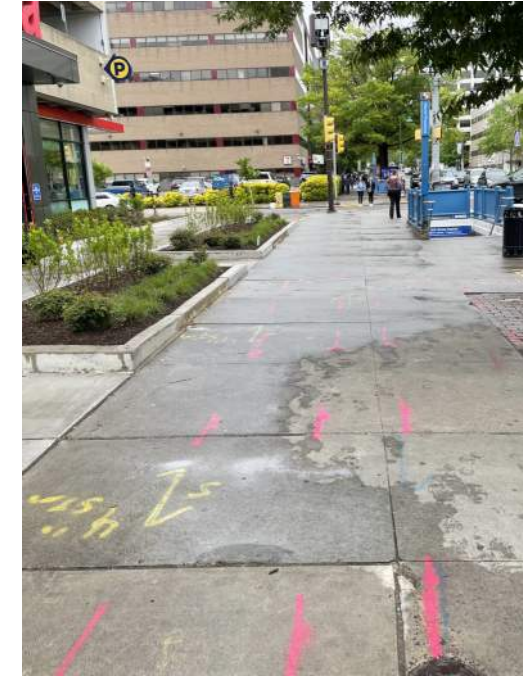
PROPOSED 3D VIEW  
SEPTA ADA IMPROVEMENTS  
34TH STREET STATION  
MARKET FRANKFORD LINE  
ART COMMISSION

DESIGNED BY: MA  
DRAWN BY: NAF  
CHECKED BY: TY  
APPROVED BY: JCL  
SCALE: NTS  
PROJECT NO.

ISSUE DATE:  
10/31/2023  
SHEET NUMBER:  
**SK11**  
OF 99



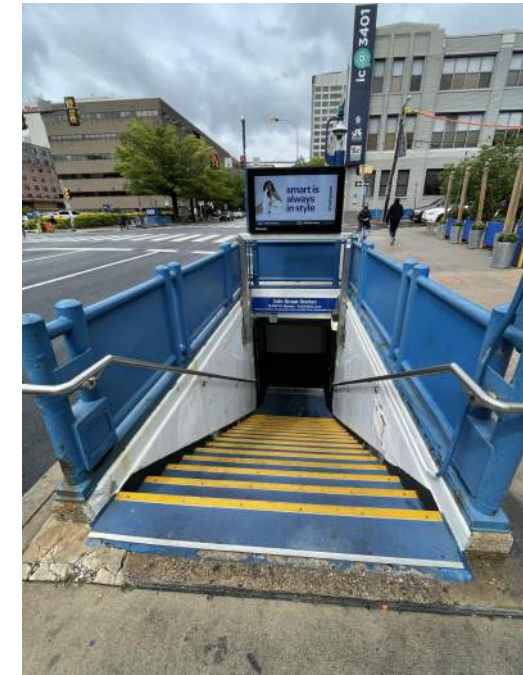
**EXISTING CONDITIONS SOUTHWEST CORNER**



**EXISTING CONDITIONS SOUTHEAST CORNER**



**EXISTING CONDITIONS NORTHWEST CORNER**



**EXISTING CONDITIONS NORTHEAST CORNER**

11/1/2023 10:35:05 AM



## PROPOSED MATERIALS

11/1/2023 10:35:06 AM



1801 Market Street, Suite 2600  
Philadelphia, PA 19103

PROPOSED MATERIALS  
SEPTA ADA IMPROVEMENTS  
34TH STREET STATION  
MARKET FRANKFORD LINE  
ART COMMISSION

DESIGNED BY: MA  
DRAWN BY: NAF  
CHECKED BY: TY  
APPROVED BY: JCL  
SCALE: NTS  
PROJECT NO.

ISSUE DATE:  
10/31/2023  
SHEET NUMBER:  
**SK13**  
OF 99