



Eastwick: From Recovery to Resilience

Quarterly Meeting - September 14, 2023

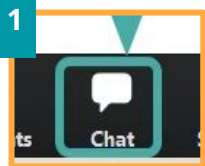


City of
Philadelphia

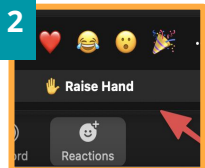
Zoom Functions

Please note:
This meeting will be recorded

To ask questions:



1 Use the **chat** function to ask questions at anytime

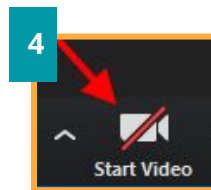


2 Use the **raise hand** function to ask verbally



3 Click the **unmute** function to speak when called upon

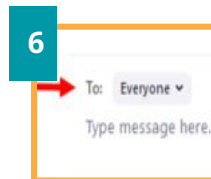
If you prefer to remain anonymous:



4 Turn off your camera by clicking the **camera button** at the bottom of the zoom window



5 Change your name by clicking **participants**, and then clicking **more** next to your name OR clicking the **three dots** next to your name and selecting the 'change name' function from the drop-down menu



6 Ask questions anonymously by submitting them through the **direct message** option at the bottom of the chat window to "**Questions - chat**".



Agenda

Introduction & Recap

Flood Resilience Updates (Alert & Early Warning, Interim Measures)

US Army Corps of Engineers Study

OPEN FORUM

Community Updates

Announcements and Closing



Who's in the Virtual Room



OTIS

Office of Transportation,
Infrastructure, & Sustainability

CITY OF PHILADELPHIA



City Council
PHILADELPHIA



FEMA



 **Eastwick Residents**



Eastwick Friends & Neighbors Coalition



Philadelphia
City Planning Commission
CITY OF PHILADELPHIA



**PHILADELPHIA
PARKS & RECREATION**



pennsylvania
EMERGENCY MANAGEMENT AGENCY

THE CITY OF PHILADELPHIA
OFFICE OF
SUSTAINABILITY



Poll 1



Recap



Eastwick: From Recovery to Resilience

Eastwick: from Recovery to Resilience is a multi-agency initiative coordinated by the Office of Sustainability and the Office of Transportation, Infrastructure, and Sustainability.

It aims to align City, State and Federal efforts to improve community well-being in Eastwick through actions informed by Eastwick's history, present context and residents' vision for a resilient future.




What Are the Steps
To Reach Our Goal


**Deliver and
Sustain
Transformation
Initiatives**


**Co-Develop Actions
that Build a
Resilient Future**

**Eastwick:
from Recovery
to Resilience**


**Strengthen
Partnership and
Collaboration**



**Create a Shared
Understanding of the
Issues**



Meet Liz Lankenau

Interim Director of Sustainability



Initiative Coordination Team

Taylor Quinland

Program Strategist for Place-based Initiatives,
Office of Sustainability

Korin Tangtrakul

Program Manager for Place-based Initiatives,
Office of Sustainability


Liz Lankenau

Interim Director, Office of Sustainability

Mike Carroll

Deputy Managing Director, Office of Transportation,
Infrastructure and Sustainability

Reach us by emailing: eastwick@phila.gov



Since we kicked off this effort, we have:

Distributed **capacity-building funds** to support collaboration and **Isaias recovery funding** to complete recovery.

Secured over **\$1 million towards flood resilience and community capacity building efforts** and have applied for \$2 million more.

Followed up on **quality of life issues** raised by residents.

Created spaces to share and learn, including **information sessions** and **focus groups**, and organized first (*annual?*) **Eastwick Community Day!**




Funding and support secured

| | Funding Source | Total Amount | Use |
|--|---|---------------------|---|
| Recovery & Preparedness | General Operating Fund | \$200,000 | Complete Recovery from Isaias |
| Community + City Capacity Building | Operations Transformation Fund | \$100,000 | Build internal capacity in the City |
| | William Penn Foundation | \$100,000 | Community capacity building |
| | Justice 40 Capacity Building Fund | \$30,000 | Community Empowerment |
| Secure Funding for long-term Flood Resilience | FEMA Technical Assistance | In-kind | Technical Assistance for State and Federal Grants |
| | ULI Technical Assistance Panel | In-kind | Technical Assistance for Landswap Proposal |
| | Operations Transformation Fund, William Penn Foundation | \$97,000, \$120,000 | Consultant support for preparing federal grant application and modeling needs |
| | FEMA Flood Mitigation Assistance | \$500,000 | Flood Resilience Strategy |



Funding and support in the pipeline

- **Congessionally Delegated Spending** through Congresswoman Scanlon
 - \$1.38 million for interim flood mitigation
 - Pending approval through the Congressional budget process
 - Applying for FEMA BRIC as a backup
 - EPA **Environmental Justice Government to Government** Grant
 - \$450,000 for Eastwick United staffing and capacity building
 - Award announcements likely in October
 - US DOT PROTECT Grant
 - Collaborative proposal with OTIS, OEM, Complete Streets
 - \$350,000 **Community-level emergency preparedness pilot**
- 

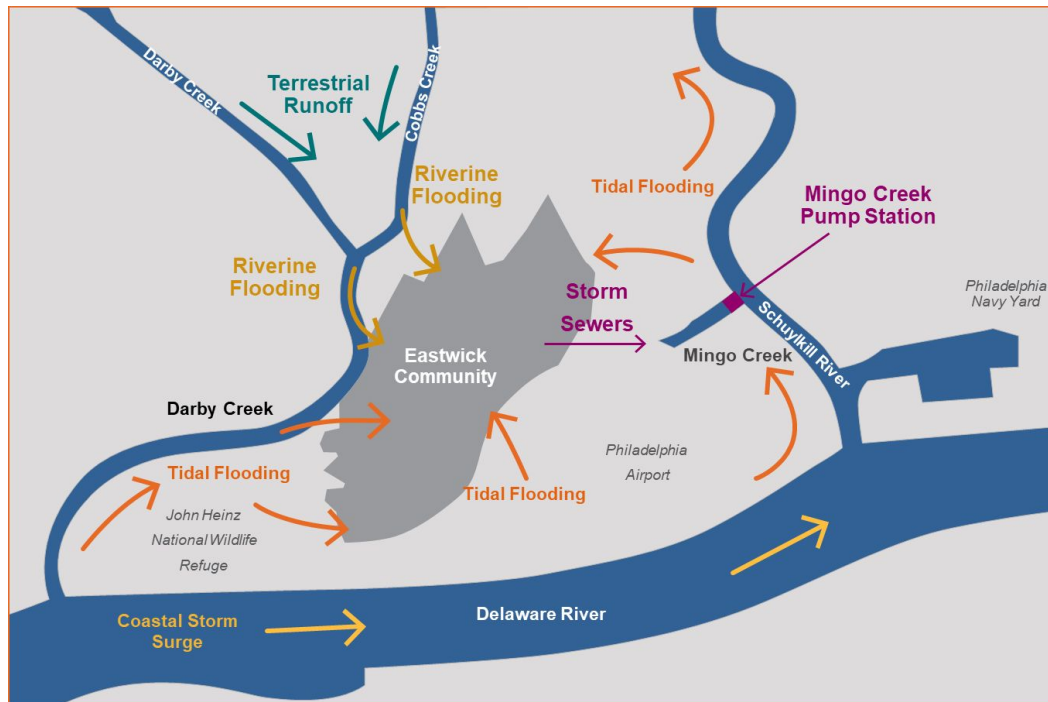


Q&A



Flood Resilience Strategy

Eastwick is vulnerable to multiple sources of flooding



- Riverine flooding from Darby/Cobbs
- Tidal flooding from the Delaware
- Coastal Storm Surge from the Delaware
- Sea Level Rise

Concept diagram of flood sources in Eastwick.
Source: Arcadis

Flood Resilience Strategy

OOS will be receiving \$450,000 from FEMA to develop an **Eastwick Flood Resilience Strategy**



INTEGRATING EXISTING STUDIES AND CONCEPTS INTO COMPREHENSIVE PLANNING PROCESS



FEMA





Eastwick Flood Resilience Strategy

- Purpose: Develop a strategy that reflects Eastwick residents' vision for their community with an understanding of future climate conditions.
- Outcomes:
 - **Community decision making** around **flood resilience measures**
 - Concept designs and benefit cost analysis for preferred measures
 - Submission of grant applications for implementation
- Timeline: 2 years
- Getting Started:
 - OOS developing a “request for proposals” (RFP) to hire a consultant to assist in developing this strategy.
 - Eastwick residents will help select consultant.

This strategy will guide ***long-term flood resilience*** in Eastwick.





Interim Flood Resilience Measures



Place Based Messaging System

Background:

- OEM received a grant in 2022 to enhance the current alert and warning system.
- Translated emergency messages into ten additional languages.
- Place based messaging system pilot in Eastwick.
- New flood gauges and cameras in Eastwick.

Current Status:

- Completed community outreach in June 2023
- Emergency alert templates are under review

Launch Date:

- Fall 2023
- 



Place Based Messaging System


What does that mean for Eastwick Residents:

- Residents must sign up online for ReadyPhiladelphia Alerts
- Messages that are specific to community hazards, needs, and requests

Thresholds:

| Expected Storm | Short Notice Storm | Unexpected Incident |
|---|---|--|
| Example: Tropical Storm/Hurricane Messaging Timing: 2 days out | Example: Severe thunderstorm, derecho Message Timing: 1 day out/day of | Example: Flash flood, non-weather related event Message Timing: within 30 minutes |

Emergency Alert Messages:

- Confirming a storm will hit Eastwick
 - Providing guidance to prepare and reduce flooding
 - Notifying residents that flooding has been identified and that we're monitoring the area
 - Evacuation notice and road closures
- 

Place Based Messaging System

Ready Philadelphia is an easy way to stay informed before, during, and after severe weather, an emergency, or special-event.

Text **READYPHILA** to **888-777**

Or Scan the **QR code** to customize your free text or email alerts



PHILA.GOV/READY



Interim Flood Barriers

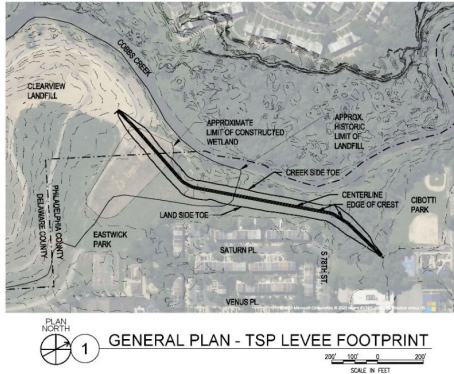
- An interim solution using HESCO Floodline barriers
- Functions similarly to a levee
 - Provides some level of protection, but not as much as a levee
 - Would remain in place for 5-10 years
- FEMA providing technical assistance in developing funding applications
- EPA providing flood modeling



Join us on October 4th for an Open House!

@ the Eastwick Rec Center - 80th and Mars Place - 5-7pm

Find out more about:



Levee Feasibility



HESCO barriers



A Resident's Guide to a Flood Ready Home

Take Action Today to Reduce the Impact of Flooding to Your Home and Belongings in Eastwick

Flood Ready Homes



Q&A




Army Corps Levee Feasibility Study



US Army Corps of Engineers - Eastwick Flood Risk Management Study draft report

Overview

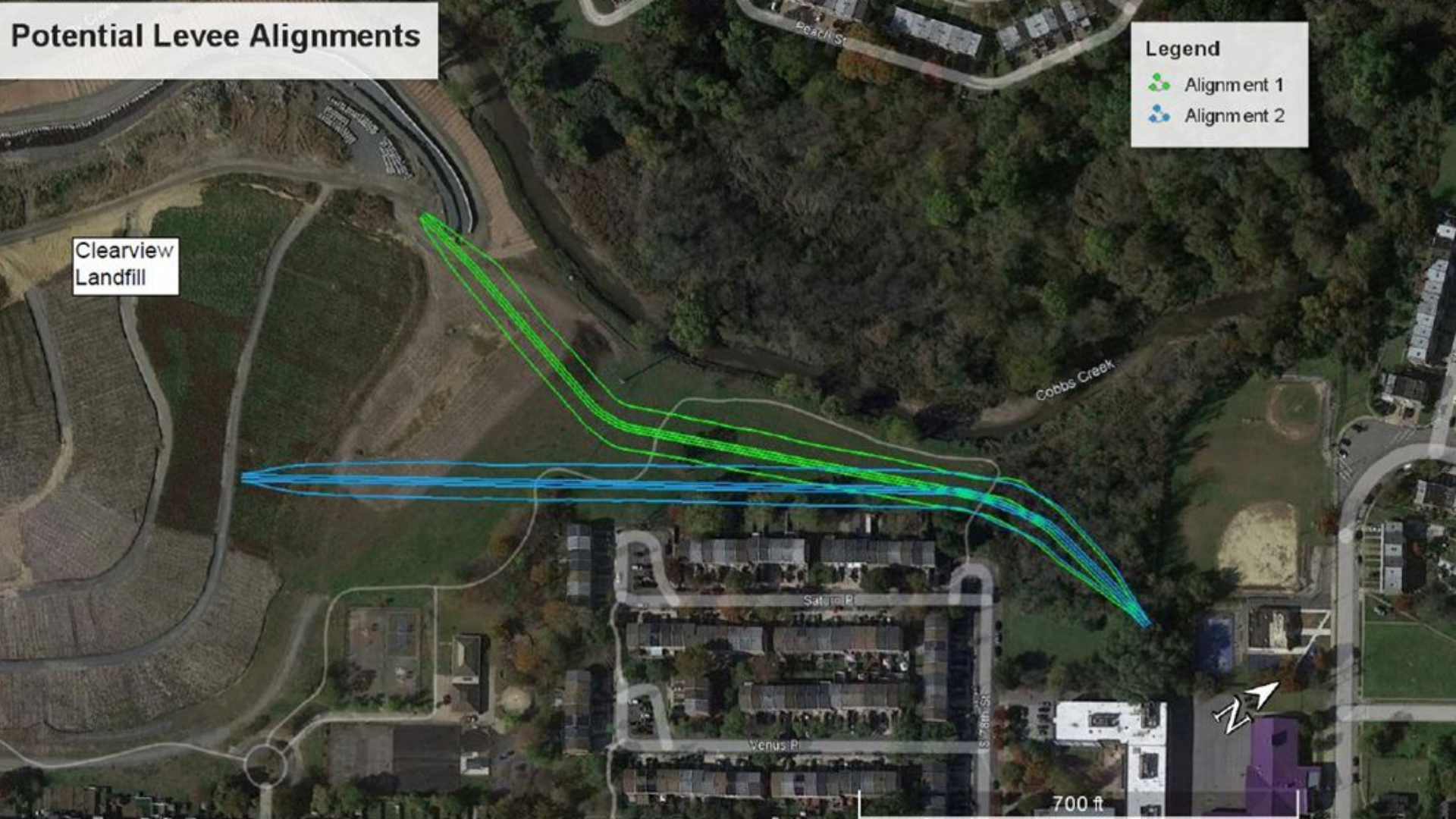
- US Army Corps of Engineers (USACE) has **congressional authority to plan, design, and implement** flood control measures in Eastwick (CAP 205 program) in partnership with a non-federal sponsor (City of Philadelphia)
 - Army Corps released a **draft report of the plan** on August 31, 2023
 - The report identifies a **levee** as the *Tentatively Selected Plan (TSP)*
 - Detailed information and opportunities for one-on-one conversation and questions will be provided at the **October 4th Open House**
- 

Potential Levee Alignments

Legend

- Alignment 1
- Alignment 2

Clearview
Landfill



Cobbs Creek

Saturn Pl

Venus Pl

Earth St

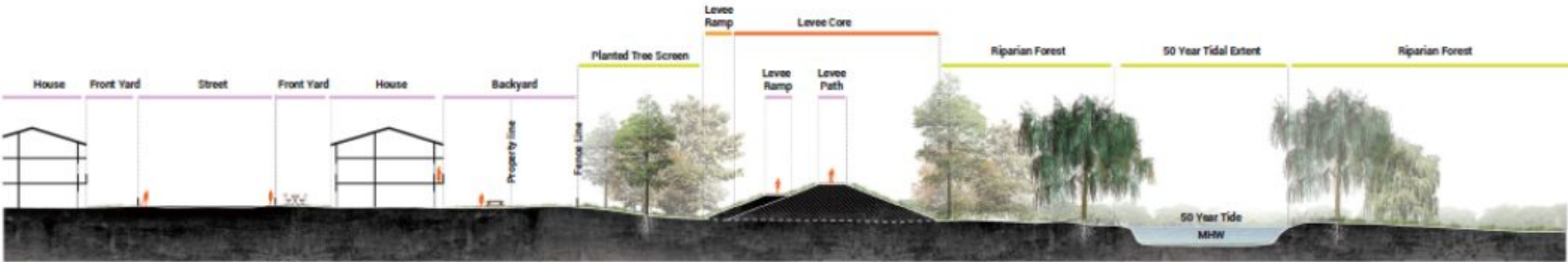
S 7th St

700 ft



Levee overview

- A levee is **an earthen embankment** designed to keep water from flooding a particular area.
- The Eastwick levee would be approximately **1,400 ft long and 15 ft high**.
- **No homes will need to be moved or acquired** in order to build the levee.
- The levee is designed to **mitigate flooding during the “100-year storm”** (riverine flooding event) from entering Eastwick through the Planet Streets.



Cross section of levee with potential additional natural features

Flood extent with and without levee in place (100-year storm)

- Flooding without levee
- Additional flooding with levee
- Flooding with and without levee

Proposed levee

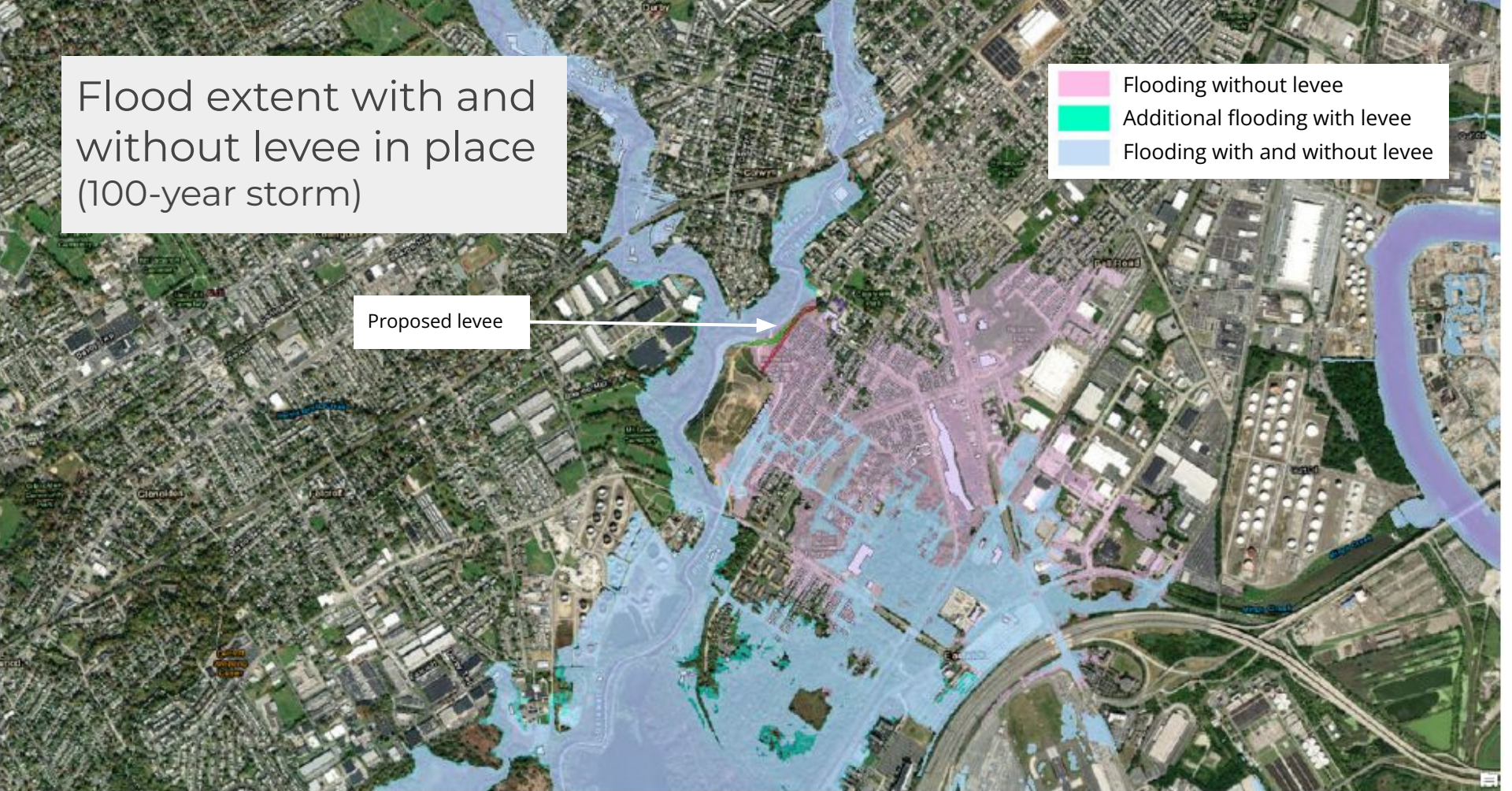



Figure 7-5: Modeled Floodplain Extents for 1% AEP Existing and FWOP Conditions (2025).




Induced Flooding

- Induced flooding is the **increased flood risk due** to the levee being in place
 - **Induced flooding is marginal**, compared to flood risk reduced by levee being in place
 - Collaborating with partners to explore **complementary measures** to reduce induced flooding
 - USACE and City of Philadelphia is coordinating with **Delaware County and neighboring townships**, with support from Congresswoman Scanlon's office, to reduce the impact of flooding in other areas.
- 



Levee costs and benefits

- Anticipated to cost \$13 million
 - Federal government pays 65%, non-federal sponsor (the City) 35%
 - Maintenance projected to cost \$67,000 annually
 - Expected to reduce damages by \$128 million over 50 year lifespan
- 

The Report Itself

- 7 page Executive Summary
- Full report is 142 pages
- Technical details included in Planning (339 pgs) and Engineering (596 pgs) appendices

Paper copies of the full report will be at the Eastwick Library and Eastwick Rec Center for viewing

Access links to all documents:
bit.ly/EastwickFRMS

**Eastwick, Philadelphia County,
Pennsylvania**

**Flood Risk Management
Continuing Authorities Program Section 205**

**Draft Integrated Feasibility Report &
Environmental Assessment**



August 31, 2023




**U.S. ARMY CORPS OF
ENGINEERS
PHILADELPHIA DISTRICT**

**PHILADELPHIA
WATER**
EST. 1801




How to Provide Comments

- Comment period is open until **November 1, 2023**
 - Submit comments by **email**: PDPA-NAP@usace.army.mil
 - Submit comments by **mail**: U.S. Army Corps of Engineers Planning Division, 1650 Arch Street, Philadelphia, PA 19103
 - Typed and handwritten comments will be accepted
 - Join us for the **Eastwick Flood Mitigation Open House!**
 - Wednesday October 4th, 5-7pm at the Eastwick Rec Center
- 



Next Steps

- Address and incorporate public comments
 - Optimize levee height and other features (including complementary measures)
 - Finalize feasibility report - anticipated Summer 2024
 - Continued coordination with Delaware County and townships
 - **City of Philadelphia needs to sign Partnership Agreement for next phase (design)**
- 



Open Forum



Community Updates

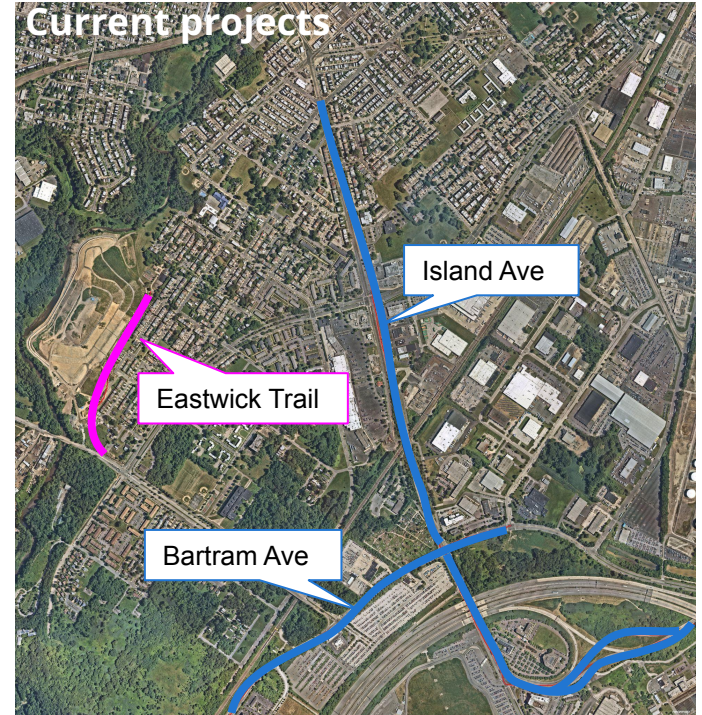
Eastwick transportation projects

Current:

- Eastwick Trail
- Bartram Ave repaving
- Island Ave Complete Streets & repaving

Upcoming

- Lindbergh Boulevard Safety Project (58-84th st)
- 84th Street repaving (Lindbergh to Bartram)



Current: Bartram Ave PennDOT Repaving

- Bartram Ave. between Gov. Printz Blvd to Essington Ave.
- Repaving process has started; it's being milled now



Current: Island Avenue Improvement Project

- Island Ave. from Elmwood Ave. to Suffolk Ave.
- Aims to reduce congestion and improve safety for all
- Improvements include shared trail for pedestrians and cyclists, intersection upgrades, new trolley boarding platforms, upgraded LED light fixtures
- Construction started late spring 2023



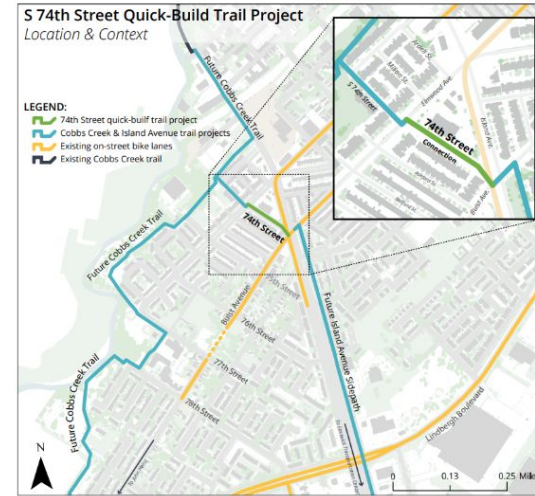
Island Ave concept

Project website:

<https://www.phila.gov/documents/island-avenue-improvement-project/>

Current: 74th Street

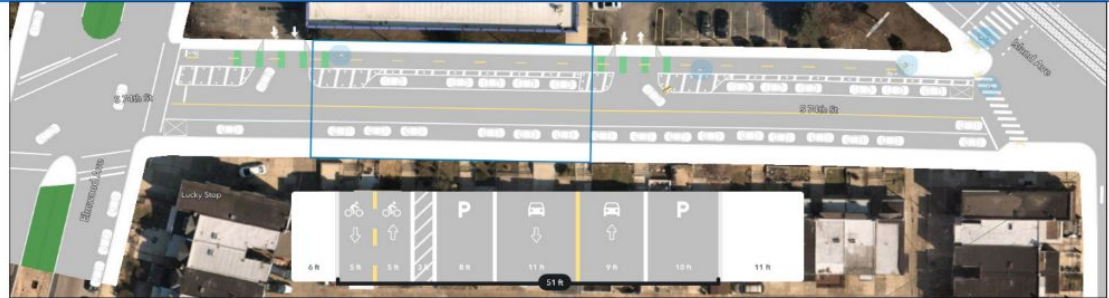
- 74th was repaved and restriped this summer from Island Ave. to Elmwood Ave. with a new configuration
- Vertical elements (flex posts) still need to be installed



This is what it will look like when completed



Future Conditions



- Parking on both sides of the street
- Properly-sized, marked travel lanes
- A two-way separated bicycle facility on the non-residential curb

Upcoming: Lindbergh Boulevard Complete Streets Safety Project (2024)

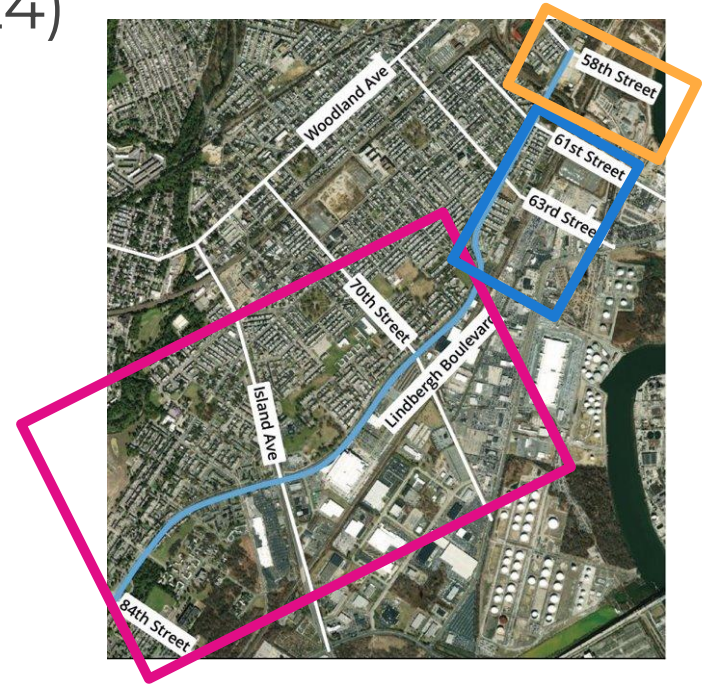


Same:

- Preserved parking lane from 58th-65th
- Two travel lanes in each direction from 65th-84th

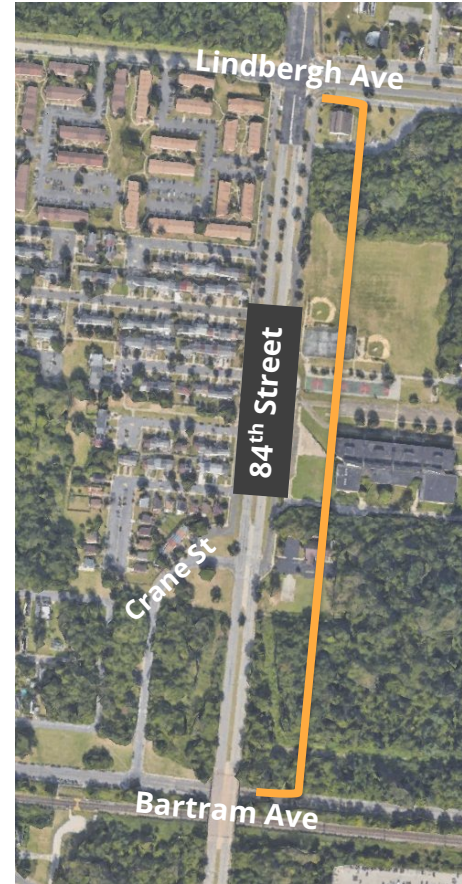
Improved for Safety:

- Shorter pedestrian crossing in front of moving vehicle lanes
- Buffer separated bicycle lane on each side of the street the full length from 58th-84th
- One travel lane in each direction from 58th-65th



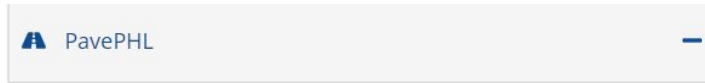
Upcoming: 84th Street Repaving Project (2025)

- 84th Street from Lindbergh Blvd to Bartram Ave.
- Scheduled for PennDOT repaving
- Office of Complete Streets is analyzing safety data to create recommendations for improvements
- *What safety issues do you experience on 84th Street?* (e.g. speeding, bus boarding, biking)
- Community outreach meetings in spring 2024



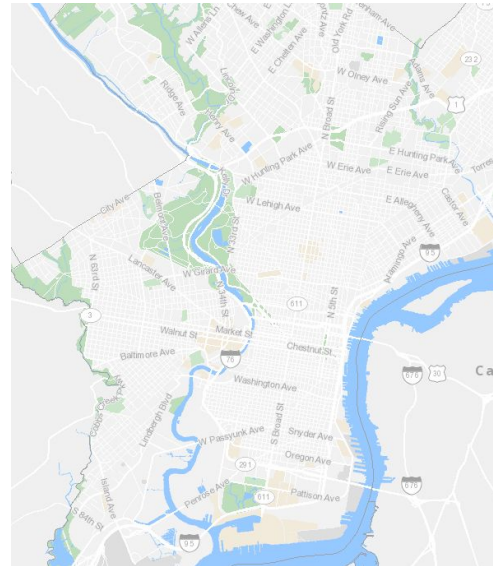
Paving status: Street Smart PHL

During paving season, visit streetsmartphl.phila.gov for paving updates:



View status of paving operations.

- Streets Status for Paving Season
 - Scheduled for Milling
 - Milling Complete / Street Adjustments Pending
 - Ready to Pave
 - Paving Complete / Line Striping Pending
 - Project Complete
 - Paving Scheduled by PennDot
 - Paving Complete by PennDot
- Street Condition Index
- Most Recent Milling List
- Most Recent Paving List





Office of Complete Streets West & South District



OTIS

Office of Transportation,
Infrastructure, & Sustainability

CITY OF PHILADELPHIA

Teresa Saunders, Community Outreach Coordinator

teresa.saunders@phila.gov

Jackie Weidman, Complete Streets Project Coordinator

jackie.weidman@phila.gov





Q&A

Eastwick Rec Center

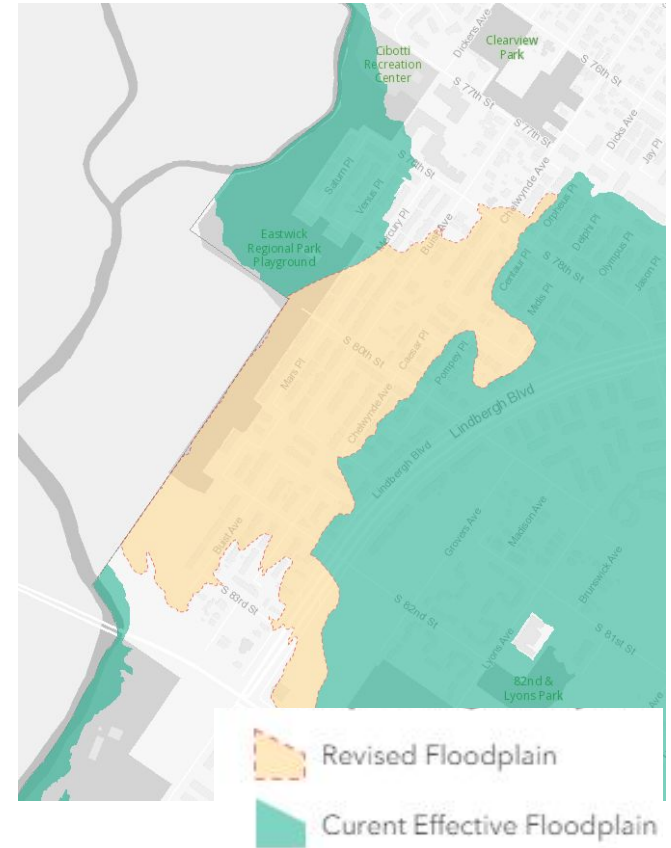
- Natalie Felix DiDonato, Facility Supervisor
- New activities and Fall events!



Resources & Reminders

- Speak with a **Flood Insurance Specialist**, available through FEMA
- **FEMA Flood Maps** - new floodplain maps are now effective

To follow up on any of the above, email eastwick@phila.gov



Webpage

Visit the Eastwick: From Recovery to Resilience webpage to view resources, blog posts, upcoming events, and more!

An official website of the City of Philadelphia government. [Here's how you know](#) English Español 中文

City of Philadelphia Services Programs Departments Tools Publications News

Eastwick: From Recovery to Resilience

Building a climate-resilient future in one of Philadelphia's most flood-prone neighborhoods.

About

Eastwick faces many environmental challenges. It's near the airport, two major highways, a closed oil refinery, and a landfill. All contribute to pollution in the area. It's also one of the lowest lying, most flood-prone sections of the city.

Climate change is only making these problems worse. Eastwick: From Recovery to Resilience connects 11 City initiatives to address them. We're working with neighborhood residents, government partners, and other stakeholders. Together, we're making a plan to build climate resilience.

To do this, we are:

- Connecting Eastwick residents with information and resources.
- Improving communication between residents and government agencies.
- Aligning local, state, and federal resources to better meet the needs of residents.

Connect

| | |
|--|--|
| | 1515 Arch Street 13th Floor Philadelphia, PA 19102 |
| | eastwick@phila.gov |
| | (267) 846-2149 |

Frequently Asked Questions Blog

New blog post featuring frequently asked questions from around the neighborhood!



Let's Chat, Eastwick

Topic: How to Make 311 Requests Online



LET'S CHAT, EASTWICK

EASTWICK: FROM RECOVERY TO RESILIENCE IS A MULTI-AGENCY INITIATIVE TO ALIGN EFFORTS TO IMPROVE COMMUNITY WELL-BEING IN EASTWICK



CONVERSATION HOURS AT EASTWICK LIBRARY 

2851 Island Avenue

Sit down with staff from the City's Office of Sustainability to share your views on flood resilience, quality of life concerns, and community needs.

Want to schedule a time to talk or have a virtual meeting?
Email eastwick@phila.gov

SEPTEMBER 25TH
4PM-6PM

THE CITY OF PHILADELPHIA
OFFICE OF
SUSTAINABILITY



Poll 2



Next Steps



Upcoming Meetings and Milestones

- Monthly Library Chat - last Monday of the month! 4-6pm
- USACE Levee Feasibility Study - Open House
- Next quarterly town hall: Dec 7
 - What would you like to discuss? Let us know!

Reach us by emailing: eastwick@phila.gov





City of
Philadelphia