

Table 1: Wage Tax by Industry- December

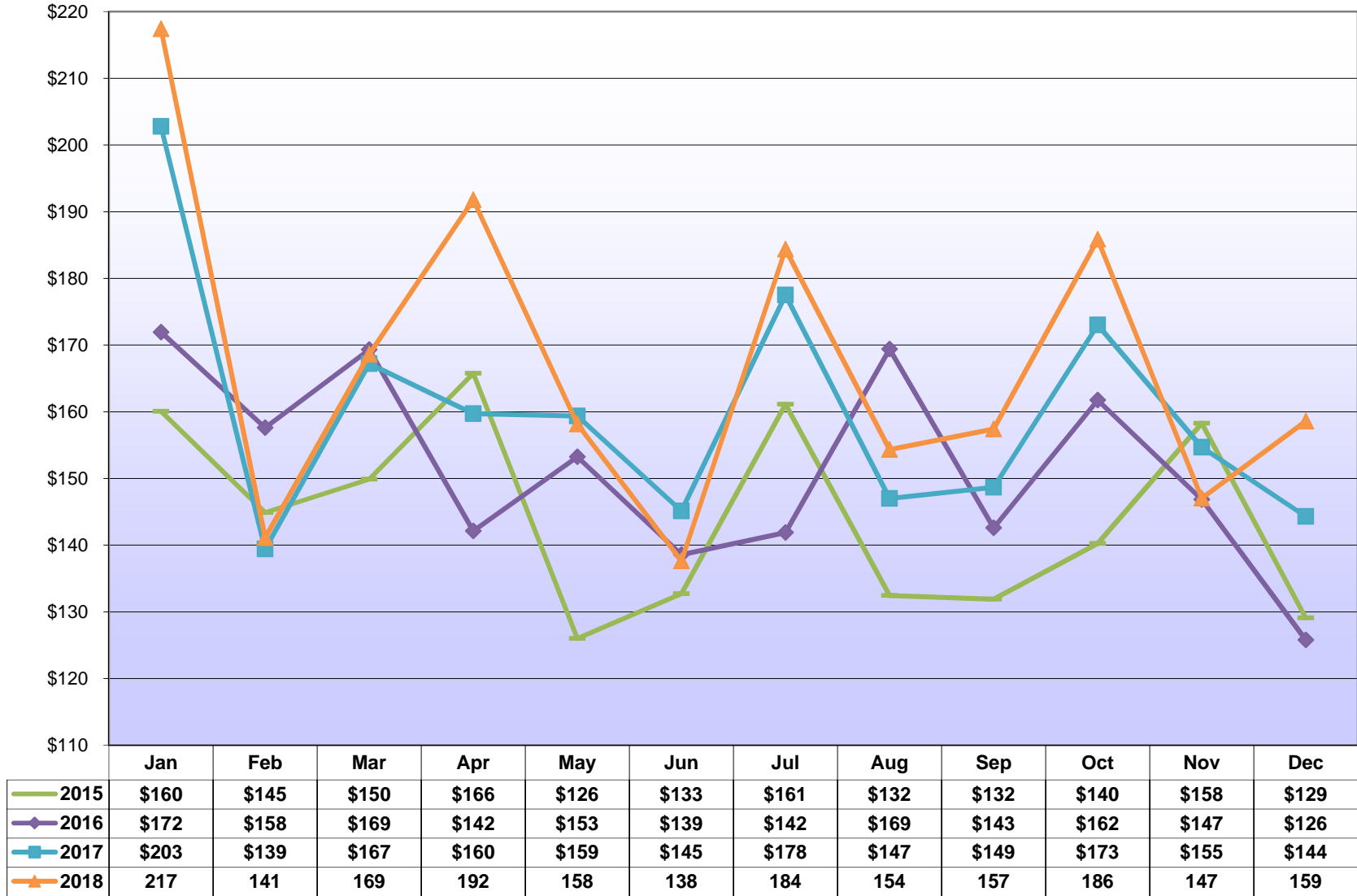
City of Philadelphia Revenue Department

NAICS Sector / Industry Group	Dec 2018	Dec 2017	Dec 2016	Dec 2015	12-Month Growth Rate (Dec - Dec)			3-Yr Annualized (December 18-15)	Difference (December 18-17)
					2018	2017	2016		
Construction	5,210,257	4,828,140	4,718,851	4,397,811	7.9%	2.3%	7.3%	5.8%	382,117
Manufacturing (includes headquarter offices & factories)	8,912,430	8,313,259	6,629,718	7,803,116	7.2%	25.4%	-15.0%	4.5%	599,171
<i>Chemicals, Petroleum Refining</i>	1,584,734	1,581,046	1,119,789	1,618,626	0.2%	41.2%	-30.8%	-0.7%	3,688
<i>Pharmaceuticals</i>	1,596,309	1,427,303	1,043,640	1,204,977	11.8%	36.8%	-13.4%	9.8%	169,006
<i>Transportation Equipment</i>	706,624	867,008	647,811	814,356	-18.5%	33.8%	-20.5%	-4.6%	(160,383)
<i>Food & Beverage Products</i>	1,340,856	1,350,845	1,034,329	1,193,903	-0.7%	30.6%	-13.4%	3.9%	(9,989)
<i>Machinery, Electronic, and Other Electric Equipment</i>	742,900	657,155	577,575	671,675	13.0%	13.8%	-14.0%	3.4%	85,745
<i>Metal Manufacturing</i>	737,800	680,833	591,762	620,108	8.4%	15.1%	-4.6%	6.0%	56,967
<i>Miscellaneous Manufacturing</i>	2,203,206	1,749,069	1,614,813	1,679,470	26.0%	8.3%	-3.8%	9.5%	454,137
Public Utilities	1,118,160	1,088,320	890,837	895,764	2.7%	22.2%	-0.6%	7.7%	29,840
Transportation and Warehousing	5,895,895	5,292,179	4,710,910	5,120,204	11.4%	12.3%	-8.0%	4.8%	603,716
Telecommunication	3,325,249	3,394,106	1,615,764	2,419,113	-2.0%	110.1%	-33.2%	11.2%	(68,857)
Publishing, Broadcasting, and Other Information	2,043,095	1,776,183	1,518,327	1,674,118	15.0%	17.0%	-9.3%	6.9%	266,912
Wholesale Trade	3,442,267	3,368,958	2,946,271	3,114,055	2.2%	14.3%	-5.4%	3.4%	73,309
Retail Trade	7,285,144	6,545,182	5,745,722	5,949,752	11.3%	13.9%	-3.4%	7.0%	739,962
Banking & Credit Unions	3,151,013	2,932,677	2,133,149	2,370,863	7.4%	37.5%	-10.0%	9.9%	218,336
Securities / Financial Investments	4,591,988	4,471,964	3,487,987	3,596,677	2.7%	28.2%	-3.0%	8.5%	120,023
Insurance	4,659,605	4,240,329	3,272,671	3,536,515	9.9%	29.6%	-7.5%	9.6%	419,275
Real Estate, Rental and Leasing	2,041,806	1,884,851	1,626,597	1,663,663	8.3%	15.9%	-2.2%	7.1%	156,955
Health and Social Services	32,227,171	29,694,950	26,713,610	27,099,403	8.5%	11.2%	-1.4%	5.9%	2,532,220
<i>Hospitals</i>	15,726,699	15,548,544	14,603,698	15,005,641	1.1%	6.5%	-2.7%	1.6%	178,155
<i>Doctors, Dentists, and Other Health Practitioners</i>	3,516,727	3,312,407	3,040,143	3,009,494	6.2%	9.0%	1.0%	5.3%	204,320
<i>Outpatient Care Centers and Other Health Services</i>	5,652,964	4,796,343	3,834,398	4,213,070	17.9%	25.1%	-9.0%	10.3%	856,621
<i>Nursing & Personal Care Facilities</i>	3,197,311	2,934,581	2,626,354	2,621,286	9.0%	11.7%	0.2%	6.8%	262,730
<i>Social Services</i>	4,133,470	3,103,075	2,609,018	2,249,911	33.2%	18.9%	16.0%	22.5%	1,030,394
Education	17,671,096	16,603,979	13,396,148	13,801,181	6.4%	23.9%	-2.9%	8.6%	1,067,117
<i>College and Universities</i>	14,058,534	13,649,748	10,468,316	10,938,739	3.0%	30.4%	-4.3%	8.7%	408,786
<i>Elementary, Secondary Schools (except public schools)</i>	2,556,498	2,013,724	2,035,863	1,981,569	27.0%	-1.1%	2.7%	8.9%	542,774
<i>Other Educational Services</i>	1,056,064	940,507	891,969	880,873	12.3%	5.4%	1.3%	6.2%	115,557
Professional Services	19,524,603	16,635,134	15,377,509	14,161,103	17.4%	8.2%	8.6%	11.3%	2,889,469
<i>Legal Services</i>	7,224,234	5,849,100	5,089,350	4,848,325	23.5%	14.9%	5.0%	14.2%	1,375,135
<i>Management Consulting</i>	3,772,697	3,463,805	3,121,436	2,907,320	8.9%	11.0%	7.4%	9.1%	308,892
<i>Engineering & Architectural Services</i>	2,257,828	1,979,546	1,787,787	1,771,284	14.1%	10.7%	0.9%	8.4%	278,282
<i>Computer</i>	1,645,980	1,437,398	1,332,833	1,167,629	14.5%	7.8%	14.1%	12.1%	208,583
<i>Accounting, Auditing, Bookkeeping</i>	1,721,759	1,572,143	1,605,712	1,494,165	9.5%	-2.1%	7.5%	4.8%	149,616
<i>Advertising and Other Professional Services</i>	2,902,104	2,333,143	2,440,391	1,972,380	24.4%	-4.4%	23.7%	13.7%	568,962
Hotels	961,540	823,269	740,283	911,280	16.8%	11.2%	-18.8%	1.8%	138,271
Restaurants	4,204,889	4,185,187	3,515,663	3,683,566	0.5%	19.0%	-4.6%	4.5%	19,701
Sport Teams	2,171,685	2,158,676	1,415,564	2,245,573	0.6%	52.5%	-37.0%	-1.1%	13,009
Arts, Entertainment, and Other Recreation	1,257,501	1,125,308	997,647	961,431	11.7%	12.8%	3.8%	9.4%	132,193
Other Sectors	11,292,988	9,823,800	9,191,614	8,529,161	15.0%	6.9%	7.8%	9.8%	1,469,188
<i>Membership Organizations</i>	3,001,302	2,820,290	2,802,029	2,486,696	6.4%	0.7%	12.7%	6.5%	181,012
<i>Employment/Outsourcing Agencies</i>	2,960,348	2,486,428	2,274,248	2,229,409	19.1%	9.3%	2.0%	9.9%	473,921
<i>Security and Investigation Services</i>	846,456	753,162	709,728	639,960	12.4%	6.1%	10.9%	9.8%	93,294
<i>Services to Buildings</i>	830,511	855,295	794,974	784,416	-2.9%	7.6%	1.3%	1.9%	(24,784)
<i>Miscellaneous Sectors</i>	3,654,371	2,908,626	2,610,635	2,388,679	25.6%	11.4%	9.3%	15.2%	745,744
Government	17,448,417	14,979,865	15,095,056	15,119,436	16.5%	-0.8%	-0.2%	4.9%	2,468,552
<i>State Government (PA)</i>	1,204,572	997,409	980,222	938,258	20.8%	1.8%	4.5%	8.7%	207,163
<i>City, School District, Local Quasi Govt.</i>	11,120,927	9,432,759	9,102,456	8,781,123	17.9%	3.6%	3.7%	8.2%	1,688,168
<i>Federal Government (includes US Post Office)</i>	4,924,356	4,398,114	4,877,923	5,247,652	12.0%	-9.8%	-7.0%	-2.1%	526,241
<i>Other Governments</i>	198,563	151,584	134,456	152,402	31.0%	12.7%	-11.8%	9.2%	46,979
Unclassified Accounts	163,484	132,919	55,090	54,143	23.0%	141.3%	1.7%	44.5%	30,565
Total from Taxpayer Database (TIPS)	\$158,600,281	\$144,299,236	\$125,794,988	\$129,107,928	9.9%	14.7%	-2.6%	7.1%	\$14,301,045
Total from City's Accounting System (FAMIS)	\$158,572,818	\$144,785,987	\$125,452,306	\$129,823,539	9.5%	15.4%	-3.4%	6.9%	\$13,786,831

Total PICA & City Wage Tax - Monthly

City of Philadelphia Revenue Department

(In Millions of Dollars)



Source: TIPS

Table 2: Wage Tax by Industry- Fiscal Year to Date (July thru December)

City of Philadelphia Revenue Department

NAICS Sector / Industry Group	FYTD 2019	FYTD 2018	FYTD 2017	FYTD 2016	FYTD Growth Rate (Jul - Dec)			3-Yr Annualized (FYTD 19-16)	Difference (FYTD 19-18)
					2019	2018	2017		
Construction	36,274,497	33,857,829	32,442,534	31,548,160	7.1%	4.4%	2.8%	4.8%	2,416,668
Manufacturing (includes headquarter offices & factories)	54,401,400	52,186,741	50,361,714	51,328,467	4.2%	3.6%	-1.9%	2.0%	2,214,659
<i>Chemicals, Petroleum Refining</i>	9,556,262	8,962,418	8,499,081	9,091,166	6.6%	5.5%	-6.5%	1.7%	593,844
<i>Pharmaceuticals</i>	9,998,254	9,618,280	9,180,994	9,398,537	4.0%	4.8%	-2.3%	2.1%	379,974
<i>Transportation Equipment</i>	4,790,415	5,041,808	5,261,189	5,259,889	-5.0%	-4.2%	0.0%	-3.1%	(251,393)
<i>Food & Beverage Products</i>	7,943,438	8,460,264	7,989,174	7,610,913	-6.1%	5.9%	5.0%	1.4%	(516,827)
<i>Machinery, Electronic, and Other Electric Equipment</i>	4,786,260	4,428,714	4,230,157	4,538,951	8.1%	4.7%	-6.8%	1.8%	357,546
<i>Metal Manufacturing</i>	4,817,789	4,341,290	4,123,142	3,967,690	11.0%	5.3%	3.9%	6.7%	476,499
<i>Miscellaneous Manufacturing</i>	12,508,983	11,333,967	11,077,977	11,461,322	10.4%	2.3%	-3.3%	3.0%	1,175,015
Public Utilities	6,235,423	6,446,579	6,010,957	5,828,294	-3.3%	7.2%	3.1%	2.3%	(211,157)
Transportation and Warehousing	34,760,082	32,049,042	29,853,275	29,587,922	8.5%	7.4%	0.9%	5.5%	2,711,040
Telecommunication	22,281,396	20,498,826	17,927,177	16,996,902	8.7%	14.3%	5.5%	9.4%	1,782,570
Publishing, Broadcasting, and Other Information	12,759,939	11,650,456	10,527,440	11,558,580	9.5%	10.7%	-8.9%	3.4%	1,109,483
Wholesale Trade	21,718,870	21,554,758	20,505,835	20,232,387	0.8%	5.1%	1.4%	2.4%	164,112
Retail Trade	46,880,664	44,455,075	42,673,719	41,146,091	5.5%	4.2%	3.7%	4.4%	2,425,588
Banking & Credit Unions	17,621,836	17,076,624	16,262,071	16,095,918	3.2%	5.0%	1.0%	3.1%	545,212
Securities / Financial Investments	22,272,172	22,780,633	19,663,132	19,636,654	-2.2%	15.9%	0.1%	4.3%	(508,461)
Insurance	29,247,394	28,317,907	26,736,848	28,098,580	3.3%	5.9%	-4.8%	1.3%	929,487
Real Estate, Rental and Leasing	14,129,743	13,674,169	12,788,371	12,124,086	3.3%	6.9%	5.5%	5.2%	455,574
Health and Social Services	213,861,025	198,242,303	186,781,657	177,869,533	7.9%	6.1%	5.0%	6.3%	15,618,723
<i>Hospitals</i>	108,672,035	102,994,550	98,387,006	95,447,855	5.5%	4.7%	3.1%	4.4%	5,677,485
<i>Doctors, Dentists, and Other Health Practitioners</i>	23,745,793	23,261,047	22,608,016	21,804,392	2.1%	2.9%	3.7%	2.9%	484,746
<i>Outpatient Care Centers and Other Health Services</i>	34,829,645	31,370,817	28,892,761	26,700,404	11.0%	8.6%	8.2%	9.3%	3,458,828
<i>Nursing & Personal Care Facilities</i>	21,011,382	19,782,010	18,747,587	17,787,066	6.2%	5.5%	5.4%	5.7%	1,229,372
<i>Social Services</i>	25,602,169	20,833,878	18,146,286	16,129,817	22.9%	14.8%	12.5%	16.6%	4,768,291
Education	96,543,686	95,596,027	89,722,315	87,180,303	1.0%	6.5%	2.9%	3.5%	947,660
<i>College and Universities</i>	75,835,016	76,220,538	70,861,445	68,544,873	-0.5%	7.6%	3.4%	3.4%	(385,522)
<i>Elementary, Secondary Schools (except public schools)</i>	14,346,188	13,354,393	12,831,111	12,730,368	7.4%	4.1%	0.8%	4.1%	991,795
<i>Other Educational Services</i>	6,362,482	6,021,096	6,029,759	5,905,062	5.7%	-0.1%	2.1%	2.5%	341,386
Professional Services	112,402,162	106,903,067	98,695,712	93,522,677	5.1%	8.3%	5.5%	6.3%	5,499,094
<i>Legal Services</i>	35,212,745	36,446,388	31,299,826	30,227,557	-3.4%	16.4%	3.5%	5.2%	(1,233,643)
<i>Management Consulting</i>	22,074,005	19,639,280	18,665,798	19,091,255	12.4%	5.2%	-2.2%	5.0%	2,434,725
<i>Engineering & Architectural Services</i>	12,499,352	11,523,807	11,184,790	10,557,581	8.5%	3.0%	5.9%	5.8%	975,546
<i>Computer</i>	10,388,398	9,446,391	8,799,236	8,351,488	10.0%	7.4%	5.4%	7.5%	942,007
<i>Accounting, Auditing, Bookkeeping</i>	12,640,544	12,285,669	12,013,769	10,695,115	2.9%	2.3%	12.3%	5.7%	354,874
<i>Advertising and Other Professional Services</i>	19,587,118	17,561,533	16,732,293	14,599,682	11.5%	5.0%	14.6%	10.3%	2,025,585
Hotels	6,085,822	5,588,302	5,531,331	5,317,741	8.9%	1.0%	4.0%	4.6%	497,519
Restaurants	28,469,258	26,822,936	25,043,344	24,632,619	6.1%	7.1%	1.7%	4.9%	1,646,322
Sport Teams	11,945,730	11,698,753	11,275,175	10,692,014	2.1%	3.8%	5.5%	3.8%	246,976
Arts, Entertainment, and Other Recreation	8,018,711	7,578,162	7,361,813	6,519,660	5.8%	2.9%	12.9%	7.1%	440,550
Other Sectors	74,187,433	70,805,745	66,675,022	61,760,554	4.8%	6.2%	8.0%	6.3%	3,381,689
<i>Membership Organizations</i>	20,210,397	19,286,334	19,107,305	17,539,638	4.8%	0.9%	8.9%	4.8%	924,062
<i>Employment/Outsourcing Agencies</i>	17,222,886	16,748,639	14,736,438	14,389,529	2.8%	13.7%	2.4%	6.2%	474,246
<i>Security and Investigation Services</i>	4,763,036	4,689,973	4,671,532	4,158,131	1.6%	0.4%	12.3%	4.6%	73,063
<i>Services to Buildings</i>	5,726,908	6,167,737	6,070,485	5,951,435	-7.1%	1.6%	2.0%	-1.3%	(440,829)
<i>Miscellaneous Sectors</i>	26,264,207	23,913,061	22,089,262	19,721,820	9.8%	8.3%	12.0%	10.0%	2,351,146
Government	116,352,850	116,631,000	110,575,652	100,665,266	-0.2%	5.5%	9.8%	4.9%	(278,150)
<i>State Government (PA)</i>	6,739,302	6,335,879	6,179,624	6,013,265	6.4%	2.5%	2.8%	3.9%	403,423
<i>City, School District, Local Quasi Govt.</i>	64,241,109	65,370,568	60,402,147	58,852,437	-1.7%	8.2%	2.6%	3.0%	(1,129,459)
<i>Federal Government (includes US Post Office)</i>	44,134,053	43,790,082	42,878,047	34,664,256	0.8%	2.1%	23.7%	8.4%	343,971
<i>Other Governments</i>	1,238,386	1,134,471	1,115,833	1,135,307	9.2%	1.7%	-1.7%	2.9%	103,915
Unclassified Accounts	1,389,755	1,256,465	800,158	762,055	10.6%	57.0%	5.0%	22.2%	133,289
Total from Taxpayer Database (TIPS)	\$987,839,847	\$945,671,399	\$888,215,252	\$853,104,463	4.5%	6.5%	4.1%	5.0%	\$42,168,447
Total from City's Accounting System (FAMIS)	\$987,764,500	\$946,047,876	\$888,018,484	\$852,411,890	4.4%	6.5%	4.2%	5.0%	\$41,716,624

Table 3: Wage Tax by Industry- Calendar Year to Date (January thru December)

NAICS Sector / Industry Group	CYTD 2018	CYTD 2017	CYTD 2016	CYTD 2015	CYTD Growth Rate (Jan - Dec)			3-Yr Annualized (CYTD 18-15)	Difference (CYTD 18-17)
					2018	2017	2016		
Construction	69,885,045	67,341,305	64,875,650	58,752,588	3.8%	3.8%	10.4%	6.0%	2,543,740
Manufacturing (includes headquarter offices & factories)	115,578,798	113,308,692	111,563,707	111,082,477	2.0%	1.6%	0.4%	1.3%	2,270,106
<i>Chemicals, Petroleum Refining</i>	22,194,265	21,208,962	20,493,805	20,795,166	4.6%	3.5%	-1.4%	2.2%	985,303
<i>Pharmaceuticals</i>	23,559,717	23,283,001	23,032,632	23,576,853	1.2%	1.1%	-2.3%	0.0%	276,716
<i>Transportation Equipment</i>	9,794,251	10,615,858	11,032,010	10,524,079	-7.7%	-3.8%	4.8%	-2.4%	(821,607)
<i>Food & Beverage Products</i>	16,109,353	16,715,670	15,862,082	15,196,687	-3.6%	5.4%	4.4%	2.0%	(606,317)
<i>Machinery, Electronic, and Other Electric Equipment</i>	9,446,742	9,088,279	8,761,858	9,119,084	3.9%	3.7%	-3.9%	1.2%	358,463
<i>Metal Manufacturing</i>	9,655,584	9,253,103	9,120,546	8,423,181	4.3%	1.5%	8.3%	4.7%	402,481
<i>Miscellaneous Manufacturing</i>	24,818,885	23,143,818	23,260,773	23,447,426	7.2%	-0.5%	-0.8%	1.9%	1,675,067
Public Utilities	14,546,046	14,465,642	13,585,222	12,775,313	0.6%	6.5%	6.3%	4.4%	80,404
Transportation and Warehousing	69,051,718	63,549,101	60,602,948	58,498,208	8.7%	4.9%	3.6%	5.7%	5,502,617
Telecommunication	52,437,279	51,954,450	44,577,371	40,553,580	0.9%	16.5%	9.9%	8.9%	482,829
Publishing, Broadcasting, and Other Information	25,670,064	23,258,938	22,243,332	23,889,458	10.4%	4.6%	-6.9%	2.4%	2,411,126
Wholesale Trade	44,420,654	44,180,665	42,242,873	40,655,088	0.5%	4.6%	3.9%	3.0%	239,989
Retail Trade	95,077,828	90,293,947	88,419,803	83,990,348	5.3%	2.1%	5.3%	4.2%	4,783,881
Banking & Credit Unions	39,855,823	40,069,508	37,112,729	36,364,011	-0.5%	8.0%	2.1%	3.1%	(213,685)
Securities / Financial Investments	55,902,582	54,993,723	50,870,541	52,066,486	1.7%	8.1%	-2.3%	2.4%	908,859
Insurance	67,684,573	64,735,013	64,038,069	61,853,821	4.6%	1.1%	3.5%	3.0%	2,949,561
Real Estate, Rental and Leasing	29,924,228	28,295,925	26,727,741	25,479,759	5.8%	5.9%	4.9%	5.5%	1,628,304
Health and Social Services	416,738,351	393,161,468	370,296,594	348,106,984	6.0%	6.2%	6.4%	6.2%	23,576,883
<i>Hospitals</i>	211,307,961	203,981,943	193,086,578	184,312,940	3.6%	5.6%	4.8%	4.7%	7,326,018
<i>Doctors, Dentists, and Other Health Practitioners</i>	47,888,330	47,394,878	45,603,260	43,592,798	1.0%	3.9%	4.6%	3.2%	493,452
<i>Outpatient Care Centers and Other Health Services</i>	67,580,203	62,274,292	58,040,518	53,591,934	8.5%	7.3%	8.3%	8.0%	5,305,911
<i>Nursing & Personal Care Facilities</i>	41,094,204	38,933,245	37,657,072	34,762,166	5.6%	3.4%	8.3%	5.7%	2,160,959
<i>Social Services</i>	48,867,653	40,577,109	35,909,166	31,847,146	20.4%	13.0%	12.8%	15.3%	8,290,543
Education	187,967,246	182,061,089	173,219,046	166,303,363	3.2%	5.1%	4.2%	4.2%	5,906,156
<i>College and Universities</i>	147,022,979	142,511,598	134,765,923	129,246,268	3.2%	5.7%	4.3%	4.4%	4,511,381
<i>Elementary, Secondary Schools (except public schools)</i>	28,230,112	27,285,975	26,029,935	25,289,636	3.5%	4.8%	2.9%	3.7%	944,137
<i>Other Educational Services</i>	12,714,154	12,263,516	12,423,188	11,767,459	3.7%	-1.3%	5.6%	2.6%	450,638
Professional Services	232,507,684	222,383,418	207,892,493	193,941,557	4.6%	7.0%	7.2%	6.2%	10,124,266
<i>Legal Services</i>	79,268,693	78,032,889	71,198,540	68,769,517	1.6%	9.6%	3.5%	4.9%	1,235,804
<i>Management Consulting</i>	44,390,608	40,834,640	38,634,464	37,789,997	8.7%	5.7%	2.2%	5.5%	3,555,968
<i>Engineering & Architectural Services</i>	24,853,202	23,502,973	22,477,960	21,051,888	5.7%	4.6%	6.8%	5.7%	1,350,229
<i>Computer</i>	20,555,223	19,506,310	17,906,391	16,927,132	5.4%	8.9%	5.8%	6.7%	1,048,913
<i>Accounting, Auditing, Bookkeeping</i>	24,578,164	24,150,726	23,164,748	20,397,562	1.8%	4.3%	13.6%	6.4%	427,438
<i>Advertising and Other Professional Services</i>	38,861,794	36,355,879	34,510,390	29,005,461	6.9%	5.3%	19.0%	10.2%	2,505,915
Hotels	11,745,780	11,087,488	11,119,586	10,845,252	5.9%	-0.3%	2.5%	2.7%	658,291
Restaurants	55,881,161	53,769,808	50,844,226	46,994,617	3.9%	5.8%	8.2%	5.9%	2,111,353
Sport Teams	23,357,733	20,501,732	20,061,652	18,754,464	13.9%	2.2%	7.0%	7.6%	2,856,000
Arts, Entertainment, and Other Recreation	15,734,823	14,990,968	14,659,463	12,954,666	5.0%	2.3%	13.2%	6.7%	743,854
Other Sectors	145,920,617	139,868,273	132,019,817	123,268,680	4.3%	5.9%	7.1%	5.8%	6,052,344
<i>Membership Organizations</i>	39,684,245	38,531,488	37,389,677	34,544,004	3.0%	3.1%	8.2%	4.7%	1,152,757
<i>Employment/Outsourcing Agencies</i>	33,473,535	32,538,253	29,574,701	28,264,320	2.9%	10.0%	4.6%	5.8%	935,282
<i>Security and Investigation Services</i>	9,446,179	9,141,286	8,991,815	8,159,196	3.3%	1.7%	10.2%	5.0%	304,893
<i>Services to Buildings</i>	11,135,819	11,590,920	11,987,190	11,811,688	-3.9%	-3.3%	1.5%	-1.9%	(455,101)
<i>Miscellaneous Sectors</i>	52,180,839	48,066,325	44,076,435	40,489,472	8.6%	9.1%	8.9%	8.8%	4,114,514
Government	226,816,805	222,779,498	213,078,396	203,763,227	1.8%	4.6%	4.6%	3.6%	4,037,307
<i>State Government (PA)</i>	13,325,439	12,787,338	12,353,926	12,213,647	4.2%	3.5%	1.1%	2.9%	538,101
<i>City, School District, Local Quasi Govt.</i>	125,634,602	123,453,107	117,428,249	116,292,278	1.8%	5.1%	1.0%	2.6%	2,181,495
<i>Federal Government (includes US Post Office)</i>	85,394,764	84,259,673	81,039,440	72,916,712	1.3%	4.0%	11.1%	5.4%	1,135,091
<i>Other Governments</i>	2,462,000	2,279,380	2,256,780	2,340,590	8.0%	1.0%	-3.6%	1.7%	182,621
Unclassified Accounts	2,348,636	2,043,191	1,574,749	1,511,909	14.9%	29.7%	4.2%	15.8%	305,445
Total from Taxpayer Database (TIPS)	\$1,999,053,472	\$1,919,093,841	\$1,821,626,008	\$1,732,405,857	4.2%	5.4%	5.2%	4.9%	\$79,959,631
Total from City's Accounting System (FAMIS)	\$1,996,743,229	\$1,916,175,471	\$1,818,803,947	\$1,730,896,829	4.2%	5.4%	5.1%	4.9%	\$80,567,758

Table 4: City of Philadelphia Wage Tax by Industry- 1st Quarter (October, November, Dec)

NAICS Sector / Industry Group	Oct-Dec 18	Oct-Dec 17	Oct-Dec 16	Oct-Dec 15	Growth Rate		3-Yr Annualized Rate	Qtr 18-15	Difference
					Qtr 18	Qtr 17			
Construction	18,176,771	16,604,046	16,168,883	15,591,091	9.5%	2.7%	3.7%	5.2%	1,572,725
Manufacturing (includes headquarter offices & factories)	27,166,644	26,501,297	25,398,275	25,077,395	2.5%	4.3%	1.3%	2.7%	665,347
<i>Chemicals, Petroleum Refining</i>	4,680,056	4,561,845	4,311,259	4,576,938	2.6%	5.8%	-5.8%	0.7%	118,211
<i>Pharmaceuticals</i>	5,067,928	4,849,612	4,476,140	4,434,234	4.5%	8.3%	0.9%	4.6%	218,316
<i>Transportation Equipment</i>	2,539,976	2,541,757	2,540,652	2,506,216	-0.1%	0.0%	1.4%	0.4%	(1,780)
<i>Food & Beverage Products</i>	4,010,251	4,547,697	4,200,081	3,750,264	-11.8%	8.3%	12.0%	2.3%	(537,446)
<i>Machinery, Electronic, and Other Electric Equipment</i>	2,407,694	2,212,078	2,169,939	2,337,458	8.8%	1.9%	-7.2%	1.0%	195,616
<i>Metal Manufacturing</i>	2,156,062	2,155,653	2,071,821	1,936,725	0.0%	4.0%	7.0%	3.6%	409
<i>Miscellaneous Manufacturing</i>	6,304,677	5,632,656	5,628,383	5,535,559	11.9%	0.1%	1.7%	4.4%	672,021
Public Utilities	3,003,124	3,075,462	2,857,372	2,818,795	-2.4%	7.6%	1.4%	2.1%	(72,338)
Transportation and Warehousing	17,727,632	16,505,815	15,253,207	14,346,606	7.4%	8.2%	6.3%	7.3%	1,221,817
Telecommunication	11,866,781	10,973,796	8,682,622	8,002,027	8.1%	26.4%	8.5%	14.0%	892,984
Publishing, Broadcasting, and Other Information	6,537,781	5,939,754	5,383,971	5,871,441	10.1%	10.3%	-8.3%	3.6%	598,027
Wholesale Trade	10,845,046	10,841,350	10,331,120	10,325,715	0.0%	4.9%	0.1%	1.6%	3,696
Retail Trade	23,710,497	22,434,273	21,428,778	20,377,697	5.7%	4.7%	5.2%	5.2%	1,276,224
Banking & Credit Unions	9,102,324	8,770,929	8,041,295	7,661,991	3.8%	9.1%	5.0%	5.9%	331,395
Securities / Financial Investments	10,985,964	10,843,969	9,632,458	9,381,102	1.3%	12.6%	2.7%	5.4%	141,995
Insurance	14,867,899	14,675,252	12,778,507	12,716,683	1.3%	14.8%	0.5%	5.3%	192,647
Real Estate, Rental and Leasing	6,957,639	6,638,803	6,174,100	6,034,113	4.8%	7.5%	2.3%	4.9%	318,836
Health and Social Services	107,603,523	101,633,869	92,535,088	88,341,189	5.9%	9.8%	4.7%	6.8%	5,969,654
<i>Hospitals</i>	54,492,044	53,505,184	48,432,402	47,165,798	1.8%	10.5%	2.7%	4.9%	986,860
<i>Doctors, Dentists, and Other Health Practitioners</i>	11,958,969	11,796,842	11,281,027	10,924,425	1.4%	4.6%	3.3%	3.1%	162,127
<i>Outpatient Care Centers and Other Health Services</i>	17,812,586	16,100,109	14,374,352	13,580,816	10.6%	12.0%	5.8%	9.5%	1,712,477
<i>Nursing & Personal Care Facilities</i>	10,420,886	9,810,720	9,345,374	8,782,351	6.2%	5.0%	6.4%	5.9%	610,166
<i>Social Services</i>	12,919,039	10,421,014	9,101,932	7,887,799	24.0%	14.5%	15.4%	17.9%	2,498,024
Education	48,987,868	49,654,342	45,210,444	43,700,694	-1.3%	9.8%	3.5%	3.9%	(666,474)
<i>College and Universities</i>	38,356,786	39,754,132	35,509,633	34,492,326	-3.5%	12.0%	2.9%	3.6%	(1,397,345)
<i>Elementary, Secondary Schools (except public schools)</i>	7,439,515	6,798,119	6,605,249	6,210,944	9.4%	2.9%	6.3%	6.2%	641,396
<i>Other Educational Services</i>	3,191,567	3,102,091	3,095,562	2,997,425	2.9%	0.2%	3.3%	2.1%	89,476
Professional Services	58,377,975	56,106,349	50,862,070	47,434,956	4.0%	10.3%	7.2%	7.2%	2,271,626
<i>Legal Services</i>	18,457,275	19,688,485	16,142,873	15,091,277	-6.3%	22.0%	7.0%	6.9%	(1,231,210)
<i>Management Consulting</i>	11,642,527	10,260,254	9,575,471	9,814,949	13.5%	7.2%	-2.4%	5.9%	1,382,272
<i>Engineering & Architectural Services</i>	6,446,658	6,008,015	5,797,756	5,434,969	7.3%	3.6%	6.7%	5.9%	438,644
<i>Computer</i>	5,305,346	4,782,079	4,542,525	4,236,494	10.9%	5.3%	7.2%	7.8%	523,267
<i>Accounting, Auditing, Bookkeeping</i>	6,677,512	6,273,170	6,205,092	5,445,620	6.4%	1.1%	13.9%	7.0%	404,342
<i>Advertising and Other Professional Services</i>	9,848,657	9,094,346	8,598,354	7,411,647	8.3%	5.8%	16.0%	9.9%	754,311
Hotels	3,129,948	2,800,489	2,660,665	2,751,192	11.8%	5.3%	-3.3%	4.4%	329,459
Restaurants	14,740,196	13,638,219	12,470,927	12,566,592	8.1%	9.4%	-0.8%	5.5%	1,101,977
Sport Teams	6,627,951	6,656,564	5,404,747	5,831,504	-0.4%	23.2%	-7.3%	4.4%	(28,613)
Arts, Entertainment, and Other Recreation	4,138,306	3,858,284	3,727,068	3,243,744	7.3%	3.5%	14.9%	8.5%	280,022
Other Sectors	37,355,161	35,244,446	33,824,658	30,910,883	6.0%	4.2%	9.4%	6.5%	2,110,715
<i>Membership Organizations</i>	10,054,989	9,619,373	9,683,093	8,644,297	4.5%	-0.7%	12.0%	5.2%	435,616
<i>Employment/Outsourcing Agencies</i>	8,944,021	8,186,779	7,788,897	7,401,561	9.2%	5.1%	5.2%	6.5%	757,242
<i>Security and Investigation Services</i>	2,384,535	2,323,376	2,377,173	2,034,481	2.6%	-2.3%	16.8%	5.4%	61,159
<i>Services to Buildings</i>	2,835,512	3,029,095	3,001,083	2,851,133	-6.4%	0.9%	5.3%	-0.2%	(193,582)
<i>Miscellaneous Sectors</i>	13,136,103	12,085,823	10,974,412	9,979,411	8.7%	10.1%	10.0%	9.6%	1,050,279
Government	48,855,638	48,039,487	45,141,695	54,293,600	1.7%	6.4%	-16.9%	-3.5%	816,151
<i>State Government (PA)</i>	3,262,942	3,135,561	3,145,035	3,007,967	4.1%	-0.3%	4.6%	2.7%	127,382
<i>City, School District, Local Quasi Govt.</i>	30,940,931	30,940,989	29,590,656	28,946,526	0.0%	4.6%	2.2%	2.2%	(58)
<i>Federal Government (includes US Post Office)</i>	14,034,624	13,419,145	11,864,723	21,772,078	4.6%	13.1%	-45.5%	-13.6%	615,478
<i>Other Governments</i>	617,142	543,792	541,281	567,030	13.5%	0.5%	-4.5%	2.9%	73,349
Unclassified Accounts	715,819	660,544	400,268	372,386	8.4%	65.0%	7.5%	24.3%	55,275
Total from Taxpayer Database (TIPS)	\$ 491,480,488	\$ 472,097,340	\$ 434,368,220	\$ 427,651,398	4.1%	8.7%	1.6%	4.7%	\$ 19,383,148
Total from City's Accounting System (FAMIS)	\$ 491,012,069	\$ 472,481,814	\$ 434,121,915	\$ 427,567,816	3.9%	8.8%	1.5%	4.7%	\$ 18,530,255