

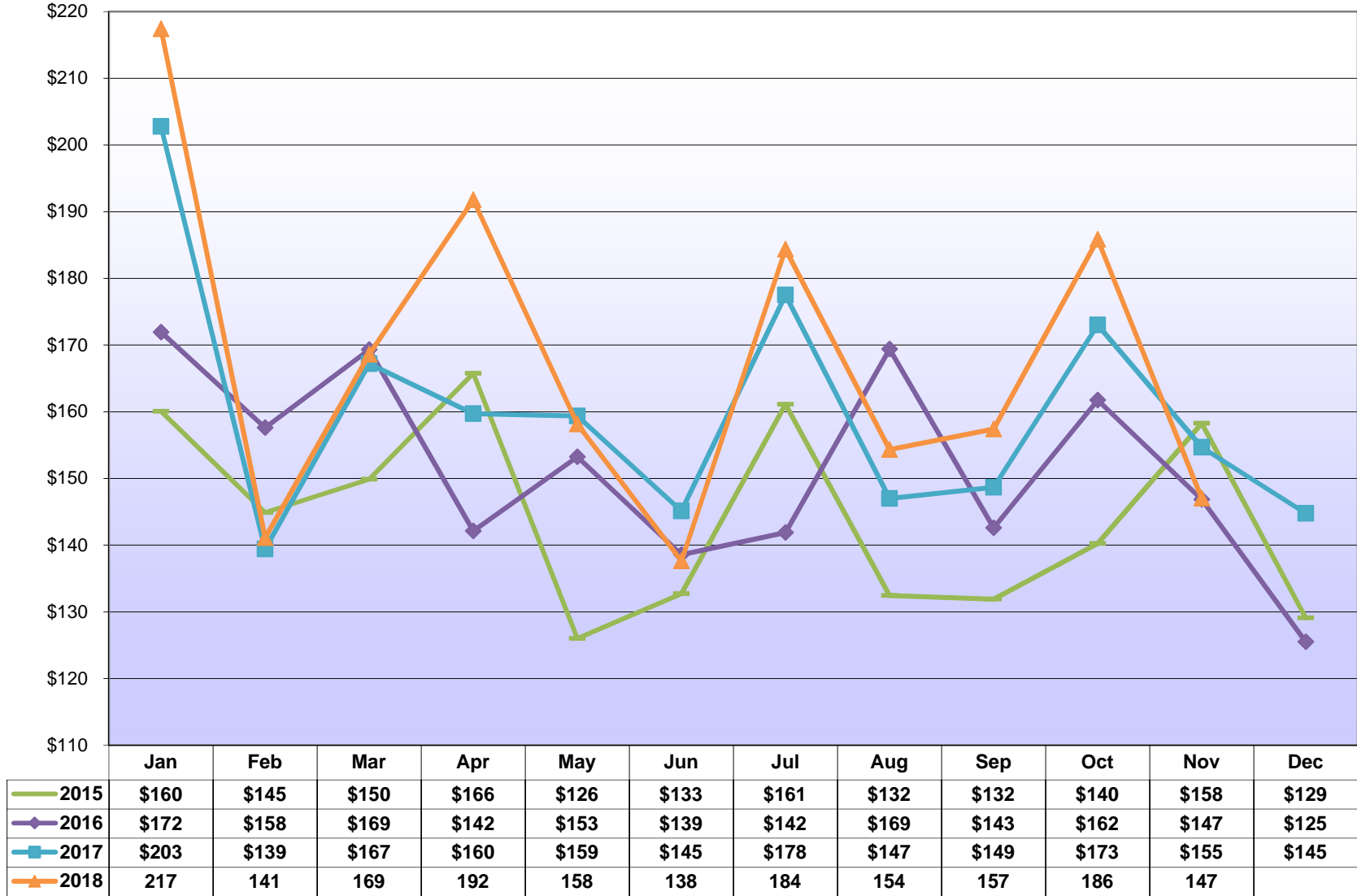
**Table 1: Wage Tax by Industry- November**

NAICS Sector / Industry Group	Nov 2018	Nov 2017	Nov 2016	Nov 2015	12-Month Growth Rate (Nov - Nov)			3-Yr Annualized (November 18-15)	Difference (November 18-17)
					2018	2017	2016		
<b>Construction</b>	5,638,673	5,302,563	5,269,249	6,017,748	6.3%	0.6%	-12.4%	-2.1%	336,110
<b>Manufacturing (includes headquarter offices &amp; factories)</b>	7,804,342	8,554,885	8,321,992	9,578,394	-8.8%	2.8%	-13.1%	-6.6%	(750,542)
<i>Chemicals, Petroleum Refining</i>	1,497,124	1,763,345	1,594,950	1,562,569	-15.1%	10.6%	2.1%	-1.4%	(266,221)
<i>Pharmaceuticals</i>	1,419,190	1,439,074	1,377,464	1,973,847	-1.4%	4.5%	-30.2%	-10.4%	(19,884)
<i>Transportation Equipment</i>	758,126	886,911	941,524	870,305	-14.5%	-5.8%	8.2%	-4.5%	(128,786)
<i>Food &amp; Beverage Products</i>	1,136,726	1,483,805	1,310,747	1,377,273	-23.4%	13.2%	-4.8%	-6.2%	(347,080)
<i>Machinery, Electronic, and Other Electric Equipment</i>	641,054	629,034	676,060	848,775	1.9%	-7.0%	-20.3%	-8.9%	12,020
<i>Metal Manufacturing</i>	591,964	686,041	720,690	688,928	-13.7%	-4.8%	4.6%	-4.9%	(94,077)
<i>Miscellaneous Manufacturing</i>	1,760,159	1,666,675	1,700,557	2,256,696	5.6%	-2.0%	-24.6%	-7.9%	93,485
<b>Public Utilities</b>	988,016	936,133	895,656	1,036,566	5.5%	4.5%	-13.6%	-1.6%	51,882
<b>Transportation and Warehousing</b>	5,191,267	5,695,994	5,196,684	4,983,274	-8.9%	9.6%	4.3%	1.4%	(504,727)
<b>Telecommunication</b>	3,795,373	4,513,932	4,227,298	3,183,124	-15.9%	6.8%	32.8%	6.0%	(718,559)
<b>Publishing, Broadcasting, and Other Information</b>	1,775,102	1,882,917	1,722,551	2,417,429	-5.7%	9.3%	-28.7%	-9.8%	(107,815)
<b>Wholesale Trade</b>	3,036,548	3,080,185	3,023,515	4,379,916	-1.4%	1.9%	-31.0%	-11.5%	(43,637)
<b>Retail Trade</b>	6,687,864	6,986,389	7,167,969	8,101,867	-4.3%	-2.5%	-11.5%	-6.2%	(298,524)
<b>Banking &amp; Credit Unions</b>	2,447,340	2,952,399	2,848,394	2,923,790	-17.1%	3.7%	-2.6%	-5.8%	(505,059)
<b>Securities / Financial Investments</b>	3,132,478	3,259,349	2,893,905	2,978,626	-3.9%	12.6%	-2.8%	1.7%	(126,871)
<b>Insurance</b>	4,660,402	5,299,665	4,831,643	4,516,370	-12.1%	9.7%	7.0%	1.1%	(639,262)
<b>Real Estate, Rental and Leasing</b>	1,892,369	1,983,827	1,834,961	2,460,976	-4.6%	8.1%	-25.4%	-8.4%	(91,458)
<b>Health and Social Services</b>	31,543,574	35,007,865	32,278,271	32,426,067	-9.9%	8.5%	-0.5%	-0.9%	(3,464,291)
<i>Hospitals</i>	16,527,173	19,554,587	17,479,799	15,977,666	-15.5%	11.9%	9.4%	1.1%	(3,027,414)
<i>Doctors, Dentists, and Other Health Practitioners</i>	3,401,848	3,959,438	3,817,967	4,680,584	-14.1%	3.7%	-18.4%	-10.1%	(557,591)
<i>Outpatient Care Centers and Other Health Services</i>	5,155,741	5,231,545	5,065,995	5,228,900	-1.4%	3.3%	-3.1%	-0.5%	(75,805)
<i>Nursing &amp; Personal Care Facilities</i>	2,925,070	3,084,865	2,951,608	3,300,062	-5.2%	4.5%	-10.6%	-3.9%	(159,795)
<i>Social Services</i>	3,533,743	3,177,430	2,962,902	3,238,856	11.2%	7.2%	-8.5%	2.9%	356,313
<b>Education</b>	17,276,951	17,304,654	15,927,580	15,658,124	-0.2%	8.6%	1.7%	3.3%	(27,703)
<i>College and Universities</i>	14,167,111	14,055,123	12,789,717	12,099,715	0.8%	9.9%	5.7%	5.4%	111,988
<i>Elementary, Secondary Schools (except public schools)</i>	2,176,957	2,311,590	2,133,304	2,390,854	-5.8%	8.4%	-10.8%	-3.1%	(134,632)
<i>Other Educational Services</i>	932,882	937,941	1,004,559	1,167,555	-0.5%	-6.6%	-14.0%	-7.2%	(5,059)
<b>Professional Services</b>	16,322,024	18,081,038	15,246,736	19,244,806	-9.7%	18.6%	-20.8%	-5.3%	(1,759,013)
<i>Legal Services</i>	4,948,118	7,957,691	5,352,740	5,718,593	-37.8%	48.7%	-6.4%	-4.7%	(3,009,574)
<i>Management Consulting</i>	3,517,953	2,769,187	2,537,039	4,374,207	27.0%	9.2%	-42.0%	-7.0%	748,766
<i>Engineering &amp; Architectural Services</i>	1,810,245	1,759,259	1,745,222	2,115,328	2.9%	0.8%	-17.5%	-5.1%	50,986
<i>Computer</i>	1,490,837	1,340,108	1,321,966	1,829,055	11.2%	1.4%	-27.7%	-6.6%	150,730
<i>Accounting, Auditing, Bookkeeping</i>	1,840,506	1,838,089	1,904,452	1,875,418	0.1%	-3.5%	1.5%	-0.6%	2,417
<i>Advertising and Other Professional Services</i>	2,714,365	2,416,703	2,385,319	3,332,206	12.3%	1.3%	-28.4%	-6.6%	297,662
<b>Hotels</b>	885,922	994,676	959,738	997,040	-10.9%	3.6%	-3.7%	-3.9%	(108,754)
<b>Restaurants</b>	4,755,626	4,096,800	3,947,647	5,163,087	16.1%	3.8%	-23.5%	-2.7%	658,826
<b>Sport Teams</b>	1,958,592	2,202,234	1,919,141	1,777,645	-11.1%	14.8%	8.0%	3.3%	(243,642)
<b>Arts, Entertainment, and Other Recreation</b>	1,212,000	1,232,583	1,157,284	1,322,106	-1.7%	6.5%	-12.5%	-2.9%	(20,583)
<b>Other Sectors</b>	10,810,623	10,633,565	10,683,719	12,882,384	1.7%	-0.5%	-17.1%	-5.7%	177,058
<i>Membership Organizations</i>	2,847,518	2,708,497	2,863,524	3,402,116	5.1%	-5.4%	-15.8%	-5.8%	139,020
<i>Employment/Outsourcing Agencies</i>	2,669,656	2,752,574	2,759,672	2,934,698	-3.0%	-0.3%	-6.0%	-3.1%	(82,918)
<i>Security and Investigation Services</i>	736,552	736,136	767,212	721,823	0.1%	-4.1%	6.3%	0.7%	417
<i>Services to Buildings</i>	811,704	895,849	980,217	1,190,291	-9.4%	-8.6%	-17.6%	-12.0%	(84,146)
<i>Miscellaneous Sectors</i>	3,745,193	3,540,509	3,313,094	4,633,456	5.8%	6.9%	<b>-28.5%</b>	-6.8%	204,685
<b>Government</b>	15,012,253	14,478,199	16,324,675	16,016,542	3.7%	-11.3%	1.9%	-2.1%	534,055
<i>State Government (PA)</i>	1,028,849	949,563	993,892	1,145,639	8.3%	-4.5%	-13.2%	-3.5%	79,286
<i>City, School District, Local Quasi Govt.</i>	9,829,918	9,527,724	11,400,819	10,885,171	3.2%	-16.4%	4.7%	-3.3%	302,194
<i>Federal Government (includes US Post Office)</i>	3,998,778	3,845,281	3,775,718	3,746,780	<b>4.0%</b>	1.8%	<b>0.8%</b>	2.2%	153,497
<i>Other Governments</i>	154,708	155,630	154,246	238,952	-0.6%	0.9%	-35.4%	-13.5%	(922)
<b>Unclassified Accounts</b>	215,054	206,159	142,884	213,411	<b>4.3%</b>	44.3%	<b>-33.0%</b>	0.3%	8,895
<b>Total from Taxpayer Database (TIPS)</b>	<b>\$147,042,396</b>	<b>\$154,686,010</b>	<b>\$146,821,493</b>	<b>\$158,279,294</b>	-4.9%	5.4%	-7.2%	-2.4%	<b>(\$7,643,615)</b>
<b>Total from City's Accounting System (FAMIS)</b>	<b>\$146,480,067</b>	<b>\$154,667,771</b>	<b>\$147,069,267</b>	<b>\$157,542,553</b>	-5.3%	5.2%	-6.6%	-2.4%	<b>(\$8,187,704)</b>

# Total PICA & City Wage Tax - Monthly

City of Philadelphia Revenue Department

(In Millions of Dollars)



Source: TIPS

Table 2: Wage Tax by Industry- Fiscal Year to Date (July thru November)

City of Philadelphia Revenue Department

NAICS Sector / Industry Group	FYTD 2019	FYTD 2018	FYTD 2017	FYTD 2016	FYTD Growth Rate (Jul - Nov)			3-Yr Annualized (FYTD 19-16)	Difference (FYTD 19-18)
					2019	2018	2017		
<b>Construction</b>	31,064,708	29,029,689	27,723,683	27,150,349	7.0%	4.7%	2.1%	4.6%	2,035,020
<b>Manufacturing (includes headquarter offices &amp; factories)</b>	45,491,379	43,873,482	43,731,996	43,525,351	3.7%	0.3%	0.5%	1.5%	1,617,897
<i>Chemicals, Petroleum Refining</i>	7,971,528	7,381,372	7,379,293	7,472,540	8.0%	0.0%	-1.2%	2.2%	590,156
<i>Pharmaceuticals</i>	8,401,944	8,190,976	8,137,354	8,193,559	2.6%	0.7%	-0.7%	0.8%	210,968
<i>Transportation Equipment</i>	4,083,791	4,174,800	4,613,378	4,445,533	-2.2%	-9.5%	3.8%	-2.8%	(91,010)
<i>Food &amp; Beverage Products</i>	6,604,990	7,109,420	6,954,845	6,417,009	-7.1%	2.2%	8.4%	1.0%	(504,429)
<i>Machinery, Electronic, and Other Electric Equipment</i>	4,043,360	3,771,559	3,652,582	3,867,276	7.2%	3.3%	-5.6%	1.5%	271,801
<i>Metal Manufacturing</i>	4,079,989	3,660,457	3,531,380	3,347,582	11.5%	3.7%	5.5%	6.8%	419,532
<i>Miscellaneous Manufacturing</i>	10,305,777	9,584,899	9,463,163	9,781,852	7.5%	1.3%	-3.3%	1.8%	720,878
<b>Public Utilities</b>	5,117,263	5,358,260	5,120,120	4,932,529	-4.5%	4.7%	3.8%	1.2%	(240,997)
<b>Transportation and Warehousing</b>	28,864,187	26,756,863	25,142,365	24,467,718	7.9%	6.4%	2.8%	5.7%	2,107,325
<b>Telecommunication</b>	18,956,147	17,104,720	16,311,413	14,577,790	10.8%	4.9%	11.9%	9.1%	1,851,427
<b>Publishing, Broadcasting, and Other Information</b>	10,711,317	9,874,273	9,009,113	9,884,462	8.5%	9.6%	-8.9%	2.7%	837,043
<b>Wholesale Trade</b>	18,276,833	18,185,800	17,559,564	17,118,332	0.5%	3.6%	2.6%	2.2%	91,033
<b>Retail Trade</b>	39,608,128	37,909,893	36,927,997	35,196,339	4.5%	2.7%	4.9%	4.0%	1,698,234
<b>Banking &amp; Credit Unions</b>	14,470,822	14,143,947	14,128,922	13,725,055	2.3%	0.1%	2.9%	1.8%	326,875
<b>Securities / Financial Investments</b>	17,670,128	18,308,669	16,175,146	16,039,977	-3.5%	13.2%	0.8%	3.3%	(638,541)
<b>Insurance</b>	24,587,531	24,077,578	23,464,177	24,562,064	2.1%	2.6%	-4.5%	0.0%	509,954
<b>Real Estate, Rental and Leasing</b>	12,087,924	11,789,318	11,161,774	10,460,422	2.5%	5.6%	6.7%	4.9%	298,606
<b>Health and Social Services</b>	181,633,980	168,547,352	160,068,047	150,770,131	7.8%	5.3%	6.2%	6.4%	13,086,628
<i>Hospitals</i>	92,948,003	87,446,006	83,783,309	80,442,214	6.3%	4.4%	4.2%	4.9%	5,501,997
<i>Doctors, Dentists, and Other Health Practitioners</i>	20,229,130	19,948,640	19,567,873	18,794,898	1.4%	1.9%	4.1%	2.5%	280,490
<i>Outpatient Care Centers and Other Health Services</i>	29,800,424	26,574,474	25,058,363	22,487,333	12.1%	6.1%	11.4%	9.8%	3,225,950
<i>Nursing &amp; Personal Care Facilities</i>	17,814,072	16,847,429	16,121,233	15,165,780	5.7%	4.5%	6.3%	5.5%	966,642
<i>Social Services</i>	20,842,351	17,730,803	15,537,268	13,879,906	17.5%	14.1%	11.9%	14.5%	3,111,549
<b>Education</b>	78,873,850	78,992,048	76,326,167	73,379,122	-0.1%	3.5%	4.0%	2.4%	(118,198)
<i>College and Universities</i>	61,776,482	62,570,790	60,393,129	57,606,133	-1.3%	3.6%	4.8%	2.4%	(794,308)
<i>Elementary, Secondary Schools (except public schools)</i>	11,790,950	11,340,669	10,795,248	10,748,800	4.0%	5.1%	0.4%	3.1%	450,281
<i>Other Educational Services</i>	5,306,418	5,080,589	5,137,789	5,024,189	4.4%	-1.1%	2.3%	1.8%	225,829
<b>Professional Services</b>	92,857,657	90,267,934	83,318,204	79,361,575	2.9%	8.3%	5.0%	5.4%	2,589,723
<i>Legal Services</i>	27,989,379	30,597,288	26,210,476	25,379,232	-8.5%	16.7%	3.3%	3.3%	(2,607,909)
<i>Management Consulting</i>	18,301,308	16,175,475	15,544,362	16,183,935	13.1%	4.1%	-4.0%	4.2%	2,125,833
<i>Engineering &amp; Architectural Services</i>	10,240,752	9,544,260	9,397,003	8,786,298	7.3%	1.6%	7.0%	5.2%	696,491
<i>Computer</i>	8,725,101	8,008,993	7,466,403	7,183,858	8.9%	7.3%	3.9%	6.7%	716,108
<i>Accounting, Auditing, Bookkeeping</i>	10,918,784	10,713,526	10,408,057	9,200,950	1.9%	2.9%	13.1%	5.9%	205,258
<i>Advertising and Other Professional Services</i>	16,682,333	15,228,391	14,291,903	12,627,302	9.5%	6.6%	13.2%	9.7%	1,453,942
<b>Hotels</b>	5,124,281	4,765,033	4,791,048	4,406,460	7.5%	-0.5%	8.7%	5.2%	359,248
<b>Restaurants</b>	24,262,884	22,637,749	21,527,681	20,949,054	7.2%	5.2%	2.8%	5.0%	1,625,135
<b>Sport Teams</b>	9,774,045	9,540,078	9,859,611	8,446,441	2.5%	-3.2%	16.7%	5.0%	233,967
<b>Arts, Entertainment, and Other Recreation</b>	6,761,211	6,452,854	6,364,165	5,558,228	4.8%	1.4%	14.5%	6.7%	308,357
<b>Other Sectors</b>	62,907,829	60,981,944	57,483,407	53,231,393	3.2%	6.1%	8.0%	5.7%	1,925,884
<i>Membership Organizations</i>	17,209,095	16,466,045	16,305,276	15,052,942	4.5%	1.0%	8.3%	4.6%	743,050
<i>Employment/Outsourcing Agencies</i>	14,261,372	14,262,212	12,462,190	12,160,120	0.0%	14.4%	2.5%	5.5%	(840)
<i>Security and Investigation Services</i>	3,916,580	3,936,811	3,961,804	3,518,171	-0.5%	-0.6%	12.6%	3.6%	(20,231)
<i>Services to Buildings</i>	4,912,519	5,312,442	5,275,512	5,167,019	-7.5%	0.7%	2.1%	-1.7%	(399,923)
<i>Miscellaneous Sectors</i>	22,608,263	21,004,435	19,478,627	17,333,141	7.6%	7.8%	12.4%	9.3%	1,603,828
<b>Government</b>	98,904,433	101,651,134	95,480,596	85,545,830	-2.7%	6.5%	11.6%	5.0%	(2,746,701)
<i>State Government (PA)</i>	5,534,730	5,338,470	5,199,402	5,075,007	3.7%	2.7%	2.5%	2.9%	196,260
<i>City, School District, Local Quasi Govt.</i>	53,120,182	55,937,809	51,299,691	50,071,314	-5.0%	9.0%	2.5%	2.0%	(2,817,627)
<i>Federal Government (includes US Post Office)</i>	39,209,697	39,391,968	38,000,125	29,416,604	-0.5%	3.7%	29.2%	10.1%	(182,271)
<i>Other Governments</i>	1,039,823	982,887	981,377	982,905	5.8%	0.2%	-0.2%	1.9%	56,936
<b>Unclassified Accounts</b>	1,239,825	1,123,546	745,069	707,912	10.3%	50.8%	5.2%	20.5%	116,279
<b>Total from Taxpayer Database (TIPS)</b>	<b>\$829,246,361</b>	<b>\$801,372,163</b>	<b>\$762,420,264</b>	<b>\$723,996,535</b>	<b>3.5%</b>	<b>5.1%</b>	<b>5.3%</b>	<b>4.6%</b>	<b>\$27,874,198</b>
<b>Total from City's Accounting System (FAMIS)</b>	<b>\$829,191,682</b>	<b>\$801,261,889</b>	<b>\$762,566,178</b>	<b>\$722,588,351</b>	<b>3.5%</b>	<b>5.1%</b>	<b>5.5%</b>	<b>4.7%</b>	<b>\$27,929,793</b>

**Table 3: Wage Tax by Industry- Calendar Year to Date (January thru November)**

NAICS Sector / Industry Group	CYTD 2018	CYTD 2017	CYTD 2016	CYTD 2015	CYTD Growth Rate (Jan - Nov)			3-Yr Annualized (CYTD 18-15)	Difference (CYTD 18-17)
					2018	2017	2016		
<b>Construction</b>	64,676,091	62,513,164	60,156,798	54,354,777	3.5%	3.9%	10.7%	6.0%	2,162,927
<b>Manufacturing (includes headquarter offices &amp; factories)</b>	106,665,979	104,995,433	104,933,989	103,279,361	1.6%	0.1%	1.6%	1.1%	1,670,545
<i>Chemicals, Petroleum Refining</i>	20,609,531	19,627,916	19,374,017	19,176,540	5.0%	1.3%	1.0%	2.4%	981,615
<i>Pharmaceuticals</i>	21,963,408	21,855,698	21,988,992	22,371,875	0.5%	-0.6%	-1.7%	-0.6%	107,710
<i>Transportation Equipment</i>	9,087,627	9,748,851	10,384,199	9,709,723	-6.8%	-6.1%	6.9%	-2.2%	(661,224)
<i>Food &amp; Beverage Products</i>	14,770,798	15,364,826	14,827,753	14,002,784	-3.9%	3.6%	5.9%	1.8%	(594,027)
<i>Machinery, Electronic, and Other Electric Equipment</i>	8,703,842	8,431,124	8,184,283	8,447,409	3.2%	3.0%	-3.1%	1.0%	272,718
<i>Metal Manufacturing</i>	8,917,784	8,572,270	8,528,785	7,803,073	4.0%	0.5%	9.3%	4.6%	345,514
<i>Miscellaneous Manufacturing</i>	22,612,988	21,394,749	21,645,960	21,767,956	5.7%	-1.2%	-0.6%	1.3%	1,218,239
<b>Public Utilities</b>	13,427,886	13,377,322	12,694,385	11,879,549	0.4%	5.4%	6.9%	4.2%	50,563
<b>Transportation and Warehousing</b>	63,162,277	58,256,921	55,892,038	53,378,004	8.4%	4.2%	4.7%	5.8%	4,905,355
<b>Telecommunication</b>	49,112,029	48,560,344	42,961,606	38,134,467	1.1%	13.0%	12.7%	8.8%	551,685
<b>Publishing, Broadcasting, and Other Information</b>	23,621,442	21,482,756	20,725,006	22,215,340	10.0%	3.7%	-6.7%	2.1%	2,138,686
<b>Wholesale Trade</b>	40,978,611	40,811,707	39,296,602	37,541,033	0.4%	3.9%	4.7%	3.0%	166,904
<b>Retail Trade</b>	87,811,876	83,748,765	82,674,081	78,040,596	4.9%	1.3%	5.9%	4.0%	4,063,111
<b>Banking &amp; Credit Unions</b>	36,704,809	37,136,830	34,979,580	33,993,148	-1.2%	6.2%	2.9%	2.6%	(432,021)
<b>Securities / Financial Investments</b>	51,300,538	50,521,759	47,382,554	48,469,809	1.5%	6.6%	-2.2%	1.9%	778,779
<b>Insurance</b>	63,024,710	60,494,683	60,765,398	58,317,306	4.2%	-0.4%	4.2%	2.6%	2,530,027
<b>Real Estate, Rental and Leasing</b>	27,886,632	26,411,074	25,101,144	23,816,096	5.6%	5.2%	5.4%	5.4%	1,475,558
<b>Health and Social Services</b>	384,511,280	363,466,517	343,582,984	321,007,581	5.8%	5.8%	7.0%	6.2%	21,044,763
<i>Hospitals</i>	195,584,986	188,433,399	178,482,880	169,307,299	3.8%	5.6%	5.4%	4.9%	7,151,587
<i>Doctors, Dentists, and Other Health Practitioners</i>	44,371,667	44,082,470	42,563,118	40,583,303	0.7%	3.6%	4.9%	3.0%	289,196
<i>Outpatient Care Centers and Other Health Services</i>	63,218,571	57,477,949	54,206,120	49,378,864	10.0%	6.0%	9.8%	8.6%	5,740,622
<i>Nursing &amp; Personal Care Facilities</i>	37,896,894	35,998,664	35,030,718	32,140,880	5.3%	2.8%	9.0%	5.6%	1,898,229
<i>Social Services</i>	43,439,162	37,474,034	33,300,148	29,597,235	15.9%	12.5%	12.5%	13.6%	5,965,128
<b>Education</b>	170,297,409	165,457,110	159,822,898	152,502,182	2.9%	3.5%	4.8%	3.7%	4,840,299
<i>College and Universities</i>	132,964,446	128,861,851	124,297,607	118,307,529	3.2%	3.7%	5.1%	4.0%	4,102,595
<i>Elementary, Secondary Schools (except public schools)</i>	25,674,874	25,272,250	23,994,072	23,308,067	1.6%	5.3%	2.9%	3.3%	402,623
<i>Other Educational Services</i>	11,658,090	11,323,009	11,531,219	10,886,586	3.0%	-1.8%	5.9%	2.3%	335,081
<b>Professional Services</b>	212,957,395	205,748,284	192,514,985	179,780,455	3.5%	6.9%	7.1%	5.8%	7,209,111
<i>Legal Services</i>	72,045,236	72,183,789	66,109,190	63,921,192	-0.2%	9.2%	3.4%	4.1%	(138,554)
<i>Management Consulting</i>	40,617,902	37,370,835	35,513,028	34,882,677	8.7%	5.2%	1.8%	5.2%	3,247,067
<i>Engineering &amp; Architectural Services</i>	22,594,106	21,523,427	20,690,173	19,280,605	5.0%	4.0%	7.3%	5.4%	1,070,679
<i>Computer</i>	18,884,299	18,068,913	16,573,558	15,759,503	4.5%	9.0%	5.2%	6.2%	815,387
<i>Accounting, Auditing, Bookkeeping</i>	22,856,405	22,578,583	21,559,037	18,903,398	1.2%	4.7%	14.0%	6.5%	277,822
<i>Advertising and Other Professional Services</i>	35,959,446	34,022,736	32,069,999	27,033,081	5.7%	6.1%	18.6%	10.0%	1,936,710
<b>Hotels</b>	10,784,239	10,264,219	10,379,304	9,933,971	5.1%	-1.1%	4.5%	2.8%	520,020
<b>Restaurants</b>	51,679,671	49,584,621	47,328,563	43,311,052	4.2%	4.8%	9.3%	6.1%	2,095,050
<b>Sport Teams</b>	21,186,048	18,343,057	18,646,088	16,508,890	15.5%	-1.6%	12.9%	8.7%	2,842,991
<b>Arts, Entertainment, and Other Recreation</b>	14,478,043	13,865,660	13,661,816	11,993,234	4.4%	1.5%	13.9%	6.5%	612,383
<b>Other Sectors</b>	134,635,115	130,044,472	122,828,203	114,739,520	3.5%	5.9%	7.0%	5.5%	4,590,643
<i>Membership Organizations</i>	36,682,943	35,711,199	34,587,648	32,057,308	2.7%	3.2%	7.9%	4.6%	971,745
<i>Employment/Outsourcing Agencies</i>	30,506,240	30,051,825	27,300,454	26,034,911	1.5%	10.1%	4.9%	5.4%	454,415
<i>Security and Investigation Services</i>	8,599,723	8,388,124	8,282,086	7,519,236	2.5%	1.3%	10.1%	4.6%	211,599
<i>Services to Buildings</i>	10,321,430	10,735,625	11,192,216	11,027,271	-3.9%	-4.1%	1.5%	-2.2%	(414,195)
<i>Miscellaneous Sectors</i>	48,524,779	45,157,699	41,465,800	38,100,793	7.5%	8.9%	8.8%	8.4%	3,367,080
<b>Government</b>	209,368,388	207,799,632	197,983,339	188,643,791	0.8%	5.0%	5.0%	3.5%	1,568,756
<i>State Government (PA)</i>	12,120,867	11,789,929	11,373,704	11,275,388	2.8%	3.7%	0.9%	2.4%	330,938
<i>City, School District, Local Quasi Govt.</i>	114,513,675	114,020,348	108,325,793	107,511,155	0.4%	5.3%	0.8%	2.1%	493,327
<i>Federal Government (includes US Post Office)</i>	80,470,409	79,861,559	76,161,517	67,669,060	0.8%	4.9%	12.5%	5.9%	608,849
<i>Other Governments</i>	2,263,438	2,127,796	2,122,325	2,188,188	6.4%	0.3%	-3.0%	1.1%	135,642
<b>Unclassified Accounts</b>	2,201,592	1,910,272	1,519,660	1,457,766	15.3%	25.7%	4.2%	14.7%	291,320
<b>Total from Taxpayer Database (TIPS)</b>	<b>\$1,840,472,062</b>	<b>\$1,774,794,605</b>	<b>\$1,695,831,020</b>	<b>\$1,603,297,929</b>	<b>3.7%</b>	<b>4.7%</b>	<b>5.8%</b>	<b>4.7%</b>	<b>\$65,677,456</b>
<b>Total from City's Accounting System (FAMIS)</b>	<b>\$1,838,170,411</b>	<b>\$1,771,389,484</b>	<b>\$1,693,351,641</b>	<b>\$1,601,073,290</b>	<b>3.8%</b>	<b>4.6%</b>	<b>5.8%</b>	<b>4.7%</b>	<b>\$66,780,927</b>