

Table 1: Wage Tax by Industry- August

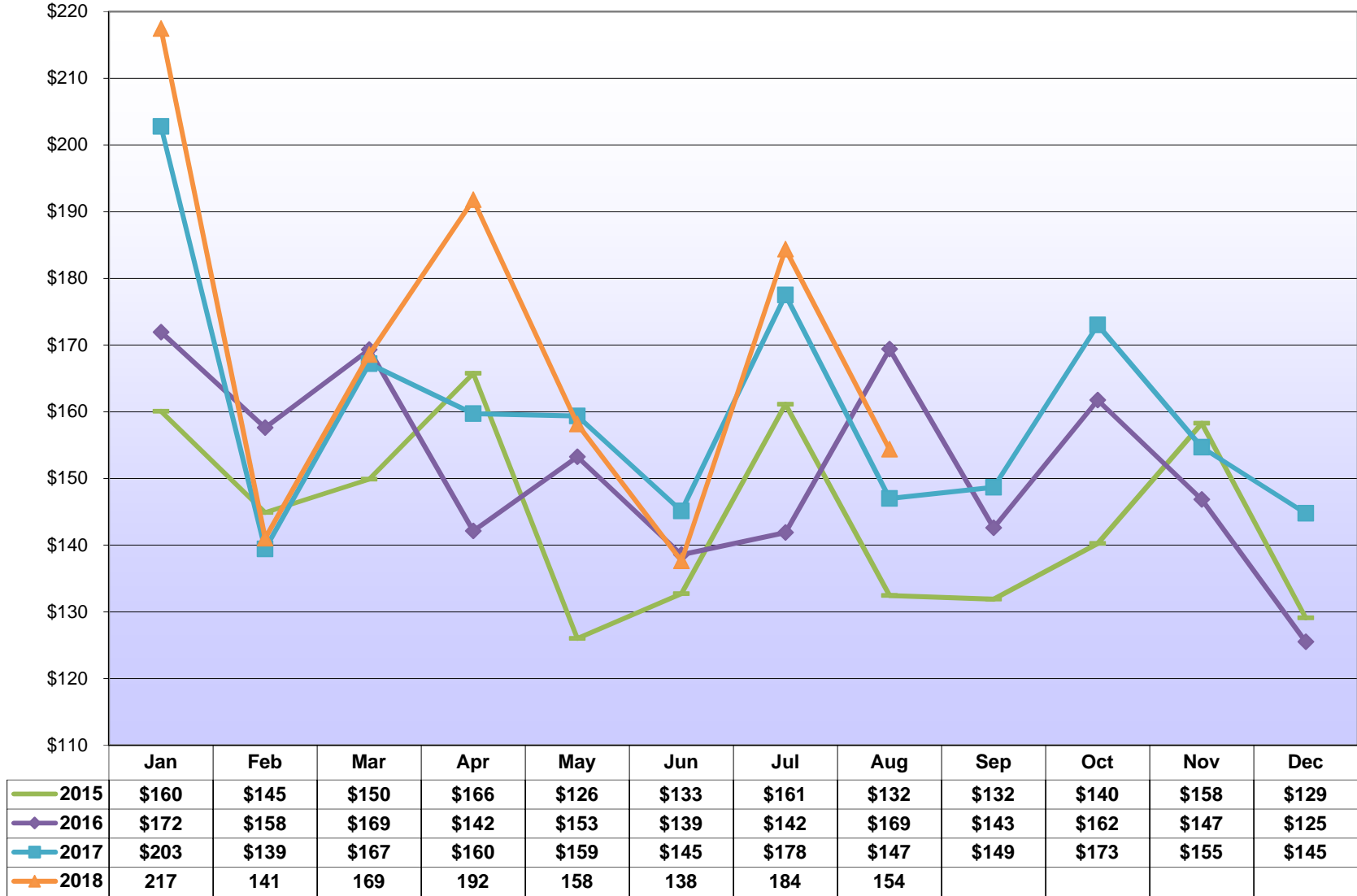
City of Philadelphia Revenue Department

NAICS Sector / Industry Group	Aug 2018	Aug 2017	Aug 2016	Aug 2015	12-Month Growth Rate (Aug - Aug)			3-Yr Annualized (August 18-15)	Difference (August 18-17)
					2018	2017	2016		
Construction	5,762,035	5,261,779	6,368,192	5,297,713	9.5%	-17.4%	20.2%	2.8%	500,256
Manufacturing (includes headquarter offices & factories)	8,836,422	8,102,634	9,870,225	8,698,110	9.1%	-17.9%	13.5%	0.5%	733,788
<i>Chemicals, Petroleum Refining</i>	1,832,707	1,432,547	1,592,401	1,585,030	27.9%	-10.0%	0.5%	5.0%	400,160
<i>Pharmaceuticals</i>	1,434,677	1,425,198	1,756,956	1,496,353	0.7%	-18.9%	17.4%	-1.4%	9,479
<i>Transportation Equipment</i>	811,375	896,761	1,027,496	801,073	-9.5%	-12.7%	28.3%	0.4%	(85,386)
<i>Food & Beverage Products</i>	1,309,998	1,299,438	1,588,761	1,147,819	0.8%	-18.2%	38.4%	4.5%	10,560
<i>Machinery, Electronic, and Other Electric Equipment</i>	653,862	639,758	870,642	739,820	2.2%	-26.5%	17.7%	-4.0%	14,104
<i>Metal Manufacturing</i>	903,781	671,420	782,765	706,600	34.6%	-14.2%	10.8%	8.6%	232,361
<i>Miscellaneous Manufacturing</i>	1,890,022	1,737,513	2,251,204	2,221,415	8.8%	-22.8%	1.3%	-5.2%	152,509
Public Utilities	1,090,514	1,178,047	1,023,541	971,462	-7.4%	15.1%	5.4%	3.9%	(87,534)
Transportation and Warehousing	5,782,587	5,560,847	5,615,691	4,465,540	4.0%	-1.0%	25.8%	9.0%	221,740
Telecommunication	3,740,683	3,325,147	3,347,528	2,635,466	12.5%	-0.7%	27.0%	12.4%	415,536
Publishing, Broadcasting, and Other Information	1,799,655	1,733,418	2,083,683	1,688,273	3.8%	-16.8%	23.4%	2.2%	66,238
Wholesale Trade	3,228,790	3,198,310	4,355,786	3,221,521	1.0%	-26.6%	35.2%	0.1%	30,480
Retail Trade	7,162,877	6,837,081	8,456,389	6,592,883	4.8%	-19.1%	28.3%	2.8%	325,796
Banking & Credit Unions	2,875,122	2,605,202	3,389,599	2,813,731	10.4%	-23.1%	20.5%	0.7%	269,920
Securities / Financial Investments	3,830,870	4,006,386	3,659,603	3,172,913	-4.4%	9.5%	15.3%	6.5%	(175,516)
Insurance	5,016,533	4,821,513	5,338,405	4,092,420	4.0%	-9.7%	30.4%	7.0%	195,021
Real Estate, Rental and Leasing	2,271,903	2,116,144	2,793,952	1,895,077	7.4%	-24.3%	47.4%	6.2%	155,759
Health and Social Services	35,336,137	30,706,428	36,757,580	28,133,157	15.1%	-16.5%	30.7%	7.9%	4,629,709
<i>Hospitals</i>	18,805,526	15,594,659	18,444,326	14,888,959	20.6%	-15.5%	23.9%	8.1%	3,210,867
<i>Doctors, Dentists, and Other Health Practitioners</i>	3,966,726	3,790,614	4,815,213	3,668,306	4.6%	-21.3%	31.3%	2.6%	176,111
<i>Outpatient Care Centers and Other Health Services</i>	5,140,445	4,933,805	6,229,493	4,152,657	4.2%	-20.8%	50.0%	7.4%	206,639
<i>Nursing & Personal Care Facilities</i>	3,482,594	3,096,276	3,544,484	2,843,154	12.5%	-12.6%	24.7%	7.0%	386,318
<i>Social Services</i>	3,940,847	3,291,074	3,724,064	2,580,081	19.7%	-11.6%	44.3%	15.2%	649,772
Education	15,678,343	15,182,628	15,228,105	14,058,534	3.3%	-0.3%	8.3%	3.7%	495,716
<i>College and Universities</i>	12,688,721	12,229,168	11,780,686	11,192,052	3.8%	3.8%	5.3%	4.3%	459,553
<i>Elementary, Secondary Schools (except public schools)</i>	2,070,965	2,069,627	2,313,211	1,940,516	0.1%	-10.5%	19.2%	2.2%	1,339
<i>Other Educational Services</i>	918,657	883,833	1,134,208	925,966	3.9%	-22.1%	22.5%	-0.3%	34,824
Professional Services	16,904,022	15,354,398	19,396,381	14,132,518	10.1%	-20.8%	37.2%	6.2%	1,549,624
<i>Legal Services</i>	5,698,552	5,257,343	5,756,355	4,693,540	8.4%	-8.7%	22.6%	6.7%	441,209
<i>Management Consulting</i>	3,192,153	2,936,788	3,903,883	2,671,202	8.7%	-24.8%	46.1%	6.1%	255,366
<i>Engineering & Architectural Services</i>	1,856,059	1,658,602	2,218,163	1,592,357	11.9%	-25.2%	39.3%	5.2%	197,457
<i>Computer</i>	1,518,498	1,326,533	1,800,799	1,248,144	14.5%	-26.3%	44.3%	6.8%	191,965
<i>Accounting, Auditing, Bookkeeping</i>	1,902,241	1,861,623	2,038,527	1,736,251	2.2%	-8.7%	17.4%	3.1%	40,618
<i>Advertising and Other Professional Services</i>	2,736,518	2,313,509	3,678,655	2,191,023	18.3%	-37.1%	67.9%	7.7%	423,009
Hotels	1,020,655	987,661	1,136,242	833,092	3.3%	-13.1%	36.4%	7.0%	32,993
Restaurants	4,189,727	4,121,122	5,223,265	3,348,638	1.7%	-21.1%	56.0%	7.8%	68,606
Sport Teams	1,216,740	1,487,810	1,644,219	923,158	-18.2%	-9.5%	78.1%	9.6%	(271,069)
Arts, Entertainment, and Other Recreation	1,245,402	1,242,407	1,483,853	992,259	0.2%	-16.3%	49.5%	7.9%	2,995
Other Sectors	11,010,449	10,505,672	13,964,525	10,037,794	4.8%	-24.8%	39.1%	3.1%	504,776
<i>Membership Organizations</i>	2,914,142	2,762,167	3,809,416	2,889,286	5.5%	-27.5%	31.8%	0.3%	151,976
<i>Employment/Outsourcing Agencies</i>	2,711,614	2,680,951	3,025,330	2,372,015	1.1%	-11.4%	27.5%	4.6%	30,663
<i>Security and Investigation Services</i>	742,290	705,442	786,133	784,381	5.2%	-10.3%	0.2%	-1.8%	36,848
<i>Services to Buildings</i>	870,630	903,253	1,304,489	1,041,166	-3.6%	-30.8%	25.3%	-5.8%	(32,623)
<i>Miscellaneous Sectors</i>	3,771,773	3,453,861	5,039,156	2,950,946	9.2%	-31.5%	70.8%	8.5%	317,912
Government	16,157,634	18,481,519	17,996,259	14,337,861	-12.6%	2.7%	25.5%	4.1%	(2,323,884)
<i>State Government (PA)</i>	1,043,462	1,023,468	1,146,358	1,112,715	2.0%	-10.7%	3.0%	-2.1%	19,994
<i>City, School District, Local Quasi Govt.</i>	10,876,810	13,148,290	11,601,308	8,885,155	-17.3%	13.3%	30.6%	7.0%	(2,271,480)
<i>Federal Government (includes US Post Office)</i>	4,044,383	4,115,798	4,975,927	4,180,086	-1.7%	-17.3%	19.0%	-1.1%	(71,414)
<i>Other Governments</i>	192,979	193,963	272,666	159,906	-0.5%	-28.9%	70.5%	6.5%	(984)
Unclassified Accounts	222,964	196,110	236,736	122,267	13.7%	-17.2%	93.6%	22.2%	26,854
Total from Taxpayer Database (TIPS)	\$154,380,064	\$147,012,264	\$169,369,761	\$132,464,389	5.0%	-13.2%	27.9%	5.2%	\$7,367,801
Total from City's Accounting System (FAMIS)	\$154,238,057	\$147,009,803	\$169,771,414	\$132,410,691	4.9%	-13.4%	28.2%	5.2%	\$7,228,254

Total PICA & City Wage Tax - Monthly

City of Philadelphia Revenue Department

(In Millions of Dollars)



Source: TIPS

Table 2: Wage Tax by Industry- Fiscal Year to Date (July thru August)

City of Philadelphia Revenue Department

NAICS Sector / Industry Group	FYTD 2019	FYTD 2018	FYTD 2017	FYTD 2016	FYTD Growth Rate (Jul - Aug)			3-Yr Annualized (FYTD 19-16)	Difference (FYTD 19-18)
					2019	2018	2017		
Construction	12,749,594	11,984,909	11,558,906	11,311,932	6.4%	3.7%	2.2%	4.1%	764,685
Manufacturing (includes headquarter offices & factories)	18,573,978	17,844,538	17,422,582	18,413,493	4.1%	2.4%	-5.4%	0.3%	729,440
<i>Chemicals, Petroleum Refining</i>	3,091,570	2,856,906	2,913,775	3,152,900	8.2%	-2.0%	-7.6%	-0.7%	234,664
<i>Pharmaceuticals</i>	3,318,611	3,390,709	3,093,833	3,344,120	-2.1%	9.6%	-7.5%	-0.3%	(72,098)
<i>Transportation Equipment</i>	1,542,198	1,716,966	1,868,483	1,844,347	-10.2%	-8.1%	1.3%	-5.8%	(174,768)
<i>Food & Beverage Products</i>	2,761,921	2,743,085	2,670,363	2,681,961	0.7%	2.7%	-0.4%	1.0%	18,836
<i>Machinery, Electronic, and Other Electric Equipment</i>	1,678,699	1,562,785	1,489,189	1,589,549	7.4%	4.9%	-6.3%	1.8%	115,914
<i>Metal Manufacturing</i>	1,746,527	1,458,202	1,429,743	1,445,831	19.8%	2.0%	-1.1%	6.5%	288,324
<i>Miscellaneous Manufacturing</i>	4,434,452	4,115,885	3,957,196	4,354,784	7.7%	4.0%	-9.1%	0.6%	318,568
Public Utilities	2,153,235	2,332,247	2,042,378	1,922,588	-7.7%	14.2%	6.2%	3.8%	(179,012)
Transportation and Warehousing	11,761,427	10,953,228	10,120,736	10,330,459	7.4%	8.2%	-2.0%	4.4%	808,199
Telecommunication	7,129,925	6,503,474	6,550,089	6,476,646	9.6%	-0.7%	1.1%	3.3%	626,451
Publishing, Broadcasting, and Other Information	4,411,906	3,914,097	3,606,601	3,958,951	12.7%	8.5%	-8.9%	3.7%	497,809
Wholesale Trade	7,679,741	7,756,220	7,382,935	7,114,057	-1.0%	5.1%	3.8%	2.6%	(76,479)
Retail Trade	16,037,745	15,617,424	15,039,980	14,765,211	2.7%	3.8%	1.9%	2.8%	420,321
Banking & Credit Unions	5,930,387	5,690,512	5,728,582	6,031,056	4.2%	-0.7%	-5.0%	-0.6%	239,875
Securities / Financial Investments	7,705,481	7,646,325	6,317,236	6,887,214	0.8%	21.0%	-8.3%	3.8%	59,156
Insurance	9,830,149	9,415,544	9,807,708	11,010,972	4.4%	-4.0%	-10.9%	-3.7%	414,605
Real Estate, Rental and Leasing	5,112,889	4,936,942	4,623,692	4,265,593	3.6%	6.8%	8.4%	6.2%	175,947
Health and Social Services	73,737,803	65,510,809	65,883,713	61,798,420	12.6%	-0.6%	6.6%	6.1%	8,226,995
<i>Hospitals</i>	37,066,853	32,184,373	34,015,813	32,222,935	15.2%	-5.4%	5.6%	4.8%	4,882,480
<i>Doctors, Dentists, and Other Health Practitioners</i>	8,424,551	8,229,883	8,306,151	7,875,135	2.4%	-0.9%	5.5%	2.3%	194,668
<i>Outpatient Care Centers and Other Health Services</i>	12,237,604	10,888,536	10,502,359	9,525,996	12.4%	3.7%	10.2%	8.7%	1,349,068
<i>Nursing & Personal Care Facilities</i>	7,292,023	6,804,908	6,616,234	6,334,818	7.2%	2.9%	4.4%	4.8%	487,115
<i>Social Services</i>	8,716,772	7,403,109	6,443,156	5,839,536	17.7%	14.9%	10.3%	14.3%	1,313,664
Education	31,855,721	30,933,421	29,460,618	29,127,822	3.0%	5.0%	1.1%	3.0%	922,300
<i>College and Universities</i>	24,724,733	24,140,051	22,956,436	22,531,502	2.4%	5.2%	1.9%	3.1%	584,682
<i>Elementary, Secondary Schools (except public schools)</i>	4,877,674	4,721,769	4,434,663	4,491,744	3.3%	6.5%	-1.3%	2.8%	155,905
<i>Other Educational Services</i>	2,253,314	2,071,601	2,069,518	2,104,577	8.8%	0.1%	-1.7%	2.3%	181,713
Professional Services	37,840,119	35,430,410	33,992,733	32,205,967	6.8%	4.2%	5.5%	5.5%	2,409,709
<i>Legal Services</i>	11,637,746	11,234,281	10,715,932	10,651,382	3.6%	4.8%	0.6%	3.0%	403,465
<i>Management Consulting</i>	7,345,532	6,854,948	6,602,140	6,229,225	7.2%	3.8%	6.0%	5.6%	490,583
<i>Engineering & Architectural Services</i>	4,242,017	3,923,324	3,928,721	3,670,937	8.1%	-0.1%	7.0%	4.9%	318,693
<i>Computer</i>	3,572,689	3,288,251	3,020,286	2,981,009	8.7%	8.9%	1.3%	6.2%	284,438
<i>Accounting, Auditing, Bookkeeping</i>	3,944,827	3,920,761	3,772,139	3,497,283	0.6%	3.9%	7.9%	4.1%	24,066
<i>Advertising and Other Professional Services</i>	7,097,309	6,208,845	5,953,514	5,176,131	14.3%	4.3%	15.0%	11.1%	888,464
Hotels	2,053,053	1,997,409	2,014,558	1,728,101	2.8%	-0.9%	16.6%	5.9%	55,644
Restaurants	9,779,345	9,684,922	9,270,982	8,844,433	1.0%	4.5%	4.8%	3.4%	94,423
Sport Teams	2,888,969	2,885,143	3,418,891	2,582,674	0.1%	-15.6%	32.4%	3.8%	3,826
Arts, Entertainment, and Other Recreation	2,676,371	2,620,555	2,586,710	2,265,898	2.1%	1.3%	14.2%	5.7%	55,816
Other Sectors	26,317,204	26,138,539	24,072,212	22,347,233	0.7%	8.6%	7.7%	5.6%	178,665
<i>Membership Organizations</i>	7,160,389	6,952,095	6,755,377	6,312,834	3.0%	2.9%	7.0%	4.3%	208,294
<i>Employment/Outsourcing Agencies</i>	5,903,654	6,364,080	5,065,623	4,937,469	-7.2%	25.6%	2.6%	6.1%	(460,426)
<i>Security and Investigation Services</i>	1,557,918	1,565,322	1,631,488	1,495,637	-0.5%	-4.1%	9.1%	1.4%	(7,404)
<i>Services to Buildings</i>	2,076,837	2,288,642	2,244,512	2,260,481	-9.3%	2.0%	-0.7%	-2.8%	(211,805)
<i>Miscellaneous Sectors</i>	9,618,406	8,968,400	8,375,211	7,340,811	7.2%	7.1%	14.1%	9.4%	650,006
Government	42,217,419	44,618,893	40,011,121	29,838,842	-5.4%	11.5%	34.1%	12.3%	(2,401,475)
<i>State Government (PA)</i>	2,229,352	2,195,101	2,072,371	2,061,930	1.6%	5.9%	0.5%	2.6%	34,251
<i>City, School District, Local Quasi Govt.</i>	21,771,569	23,832,254	21,446,362	18,515,564	-8.6%	11.1%	15.8%	5.5%	(2,060,685)
<i>Federal Government (includes US Post Office)</i>	17,751,647	18,152,705	16,057,800	8,859,449	-2.2%	13.0%	81.3%	26.1%	(401,058)
<i>Other Governments</i>	464,851	438,834	434,587	401,898	5.9%	1.0%	8.1%	5.0%	26,017
Unclassified Accounts	519,703	498,484	348,228	336,606	4.3%	43.1%	3.5%	15.6%	21,219
Total from Taxpayer Database (TIPS)	\$338,962,162	\$324,914,044	\$311,261,189	\$293,564,167	4.3%	4.4%	6.0%	4.9%	\$14,048,118
Total from City's Accounting System (FAMIS)	\$338,609,817	\$324,946,952	\$311,710,076	\$292,821,924	4.2%	4.2%	6.5%	5.0%	\$13,662,865

Table 3: Wage Tax by Industry- Calendar Year to Date (January thru August)

NAICS Sector / Industry Group	CYTD 2018	CYTD 2017	CYTD 2016	CYTD 2015	CYTD Growth Rate (Jan - Aug)			3-Yr Annualized (CYTD 18-15)	Difference (CYTD 18-17)
					2018	2017	2016		
Construction	46,349,457	45,468,385	43,992,022	38,516,360	1.9%	3.4%	14.2%	6.4%	881,073
Manufacturing (includes headquarter offices & factories)	79,741,271	78,966,489	78,624,575	78,167,503	1.0%	0.4%	0.6%	0.7%	774,782
<i>Chemicals, Petroleum Refining</i>	15,729,573	15,103,450	14,908,499	14,856,900	4.1%	1.3%	0.3%	1.9%	626,123
<i>Pharmaceuticals</i>	16,880,075	17,055,431	16,945,471	17,522,436	-1.0%	0.6%	-3.3%	-1.2%	(175,356)
<i>Transportation Equipment</i>	6,544,362	7,291,017	7,639,304	7,108,538	-10.2%	-4.6%	7.5%	-2.7%	(746,655)
<i>Food & Beverage Products</i>	10,924,213	10,998,491	10,543,271	10,267,736	-0.7%	4.3%	2.7%	2.1%	(74,278)
<i>Machinery, Electronic, and Other Electric Equipment</i>	6,330,681	6,222,350	6,020,890	6,169,683	1.7%	3.3%	-2.4%	0.9%	108,331
<i>Metal Manufacturing</i>	6,584,322	6,370,015	6,427,147	5,901,323	3.4%	-0.9%	8.9%	3.7%	214,306
<i>Miscellaneous Manufacturing</i>	16,748,046	15,925,735	16,139,993	16,340,888	5.2%	-1.3%	-1.2%	0.8%	822,311
Public Utilities	10,463,857	10,351,309	9,616,644	8,869,607	1.1%	7.6%	8.4%	5.7%	112,548
Transportation and Warehousing	45,959,658	42,453,287	40,870,408	39,240,745	8.3%	3.9%	4.2%	5.4%	3,506,371
Telecommunication	37,285,808	37,959,099	33,200,282	30,033,323	-1.8%	14.3%	10.5%	7.5%	(673,290)
Publishing, Broadcasting, and Other Information	17,378,806	15,522,579	15,322,494	16,289,829	12.0%	1.3%	-5.9%	2.2%	1,856,227
Wholesale Trade	30,401,435	30,382,127	29,119,973	27,536,758	0.1%	4.3%	5.7%	3.4%	19,308
Retail Trade	64,238,310	61,456,296	60,786,064	57,609,468	4.5%	1.1%	5.5%	3.7%	2,782,013
Banking & Credit Unions	28,162,672	28,683,396	26,579,240	26,299,149	-1.8%	7.9%	1.1%	2.3%	(520,724)
Securities / Financial Investments	41,335,892	39,859,415	37,524,644	39,317,047	3.7%	6.2%	-4.6%	1.7%	1,476,476
Insurance	48,255,578	45,832,650	47,108,929	44,766,214	5.3%	-2.7%	5.2%	2.5%	2,422,928
Real Estate, Rental and Leasing	20,936,807	19,558,697	18,563,062	17,621,266	7.0%	5.4%	5.3%	5.9%	1,378,110
Health and Social Services	276,694,543	260,429,973	249,398,650	232,035,871	6.2%	4.4%	7.5%	6.0%	16,264,570
<i>Hospitals</i>	139,703,634	133,171,766	128,715,385	121,088,020	4.9%	3.5%	6.3%	4.9%	6,531,868
<i>Doctors, Dentists, and Other Health Practitioners</i>	32,563,491	32,363,714	31,301,395	29,663,541	0.6%	3.4%	5.5%	3.2%	199,777
<i>Outpatient Care Centers and Other Health Services</i>	45,649,335	41,792,011	39,650,116	36,417,526	9.2%	5.4%	8.9%	7.8%	3,857,325
<i>Nursing & Personal Care Facilities</i>	27,374,845	25,956,143	25,525,719	23,309,918	5.5%	1.7%	9.5%	5.5%	1,418,702
<i>Social Services</i>	31,403,238	27,146,340	24,206,035	21,556,865	15.7%	12.1%	12.3%	13.4%	4,256,898
Education	123,278,683	117,398,483	112,957,349	108,250,881	5.0%	3.9%	4.3%	4.4%	5,880,200
<i>College and Universities</i>	95,912,697	90,431,111	86,860,914	83,232,897	6.1%	4.1%	4.4%	4.8%	5,481,586
<i>Elementary, Secondary Schools (except public schools)</i>	18,761,422	18,653,351	17,633,487	17,051,011	0.6%	5.8%	3.4%	3.2%	108,072
<i>Other Educational Services</i>	8,604,564	8,314,021	8,462,947	7,966,974	3.5%	-1.8%	6.2%	2.6%	290,543
Professional Services	157,864,219	150,910,760	143,189,514	132,624,846	4.6%	5.4%	8.0%	6.0%	6,953,458
<i>Legal Services</i>	55,693,413	52,820,782	50,614,646	49,193,341	5.4%	4.4%	2.9%	4.2%	2,872,631
<i>Management Consulting</i>	29,597,457	28,050,308	26,570,806	24,927,967	5.5%	5.6%	6.6%	5.9%	1,547,149
<i>Engineering & Architectural Services</i>	16,595,244	15,902,491	15,221,891	14,165,244	4.4%	4.5%	7.5%	5.4%	692,754
<i>Computer</i>	13,730,624	13,348,171	12,127,442	11,556,653	2.9%	10.1%	4.9%	5.9%	382,454
<i>Accounting, Auditing, Bookkeeping</i>	15,868,745	15,785,818	14,923,119	13,199,731	0.5%	5.8%	13.1%	6.3%	82,927
<i>Advertising and Other Professional Services</i>	26,378,734	25,003,191	23,731,610	19,581,910	5.5%	5.4%	21.2%	10.4%	1,375,544
Hotels	7,715,290	7,496,595	7,602,813	7,255,612	2.9%	-1.4%	4.8%	2.1%	218,695
Restaurants	37,183,509	36,631,794	35,071,863	31,206,431	1.5%	4.4%	12.4%	6.0%	551,714
Sport Teams	14,300,973	11,688,122	12,205,368	10,645,123	22.4%	-4.2%	14.7%	10.3%	2,612,851
Arts, Entertainment, and Other Recreation	10,392,964	10,033,361	9,884,360	8,700,904	3.6%	1.5%	13.6%	6.1%	359,602
Other Sectors	97,941,439	95,201,067	89,417,008	83,855,360	2.9%	6.5%	6.6%	5.3%	2,740,372
<i>Membership Organizations</i>	26,632,667	26,197,249	25,037,749	23,317,200	1.7%	4.6%	7.4%	4.5%	435,418
<i>Employment/Outsourcing Agencies</i>	22,065,245	22,153,694	19,903,887	18,812,261	-0.4%	11.3%	5.8%	5.5%	(88,449)
<i>Security and Investigation Services</i>	6,230,173	6,016,635	5,951,771	5,496,703	3.5%	1.1%	8.3%	4.3%	213,538
<i>Services to Buildings</i>	7,485,379	7,711,825	8,161,217	8,120,734	-2.9%	-5.5%	0.5%	-2.7%	(226,447)
<i>Miscellaneous Sectors</i>	35,527,976	33,121,664	30,362,385	28,108,462	7.3%	9.1%	8.0%	8.1%	2,406,312
Government	152,681,374	150,767,392	142,513,865	132,936,802	1.3%	5.8%	7.2%	4.7%	1,913,982
<i>State Government (PA)</i>	8,815,489	8,646,560	8,246,673	8,262,312	2.0%	4.8%	-0.2%	2.2%	168,929
<i>City, School District, Local Quasi Govt.</i>	83,165,062	81,914,793	78,472,465	75,955,406	1.5%	4.4%	3.3%	3.1%	1,250,269
<i>Federal Government (includes US Post Office)</i>	59,012,358	58,622,296	54,219,193	47,111,904	0.7%	8.1%	15.1%	7.8%	390,062
<i>Other Governments</i>	1,688,466	1,583,743	1,575,534	1,607,180	6.6%	0.5%	-2.0%	1.7%	104,723
Unclassified Accounts	1,438,669	1,285,209	1,122,819	1,086,460	11.9%	14.5%	3.3%	9.8%	153,460
Total from Taxpayer Database (TIPS)	\$1,350,001,212	\$1,298,336,486	\$1,244,671,945	\$1,172,865,561	4.0%	4.3%	6.1%	4.8%	\$51,664,726
Total from City's Accounting System (FAMIS)	\$1,348,775,538	\$1,295,074,547	\$1,242,495,539	\$1,171,306,863	4.1%	4.2%	6.1%	4.8%	\$53,700,991